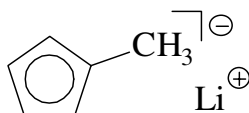


The (Butadiene)metallocene/B(C₆F₅)₃ Pathway to Catalyst Systems for Stereoselective Methylmetacrylate Polymerization – Evidence for an Anion Dependent Metallocene Catalyzed Polymerization Process

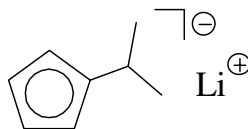
*Joachim W. Strauch, Jean-Luc Fauré, Stéphane Bredeau, Cun Wang, Gerald Kehr, Roland Fröhlich[#], Heinrich Luftmann[§], Gerhard Erker**

Organisch-Chemisches Institut der Universität Münster, Corrensstr. 40, D-48149 Münster,
Germany

Supporting Material

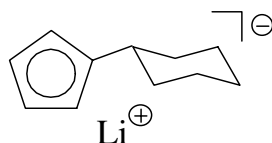


Yield 33.6g (90 %). **¹H-NMR** (200.1 MHz, [D₆]-benzene : [D₈]-thf ≈ 10 : 1, 300 K): δ = 5.97, 5.89 (each pt, each 2H, Cp-H), 2.40 (s, 3H, CH₃).

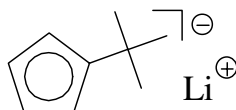


Yield 4.04g (77 %). **¹H-NMR** (200.1 MHz, [D₈]-thf, 300 K): δ = 5.41 (broad s, 4H, Cp), 2.72 (sept, 1H, ³J_{HH} = 7.2 Hz, CH), 1.13 (d, 6H, ³J_{HH} = 7.2 Hz, CH₃).

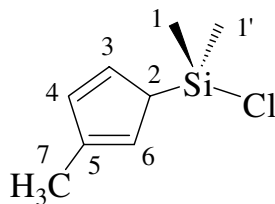
$^{13}\text{C}\{^1\text{H}\}$ -NMR (50.1 MHz, $[\text{D}_8]$ -thf, 300 K): $\delta = 128.3, 102.5, 101.4$ (Cp), 30.0 (CH), 26.3 (CH₃).



Yield 3.76 g (72 %). ^1H -NMR (200.1 MHz, $[\text{D}_8]$ -thf, 300 K): $\delta = 5.47$ (broad s, Cp), 2.39-1.25 (11H, cy-H). $^{13}\text{C}\{^1\text{H}\}$ -NMR (50.1 MHz, $[\text{D}_8]$ -thf, 300 K): $\delta = 129.5, 106.2, 103.6$ (Cp), 42.7, 39.7, 30.9, 30.4 (cy).

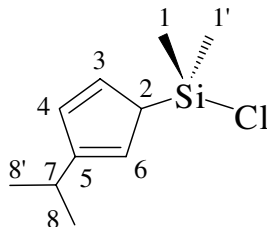


Yield 3.41 g (71 %). ^1H -NMR (599.9 MHz, $[\text{D}_8]$ -thf, 298 K): $\delta = 5.45, 5.38$ (each pt, each 2H, Cp), 1.20 (s, 9H, tBu). $^{13}\text{C}\{^1\text{H}\}$ -NMR (150.8 MHz, $[\text{D}_8]$ -thf, 298 K): $\delta = 130.9$ (ipso-Cp), 101.9, 100.4 (each Cp), 33.7 (tBu-CH₃), 32.3 (tBu-C(CH₃)₃).

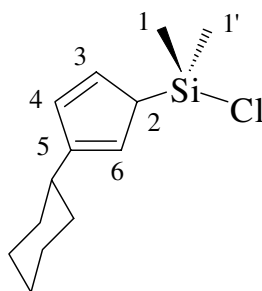


(4b) Yield (3.55 g, 88 %, yellow oil). ^1H -NMR (599.9 MHz, $[\text{D}_6]$ -benzene, 298 K): $\delta = 6.40$ (br, 1H, 3-H), 6.37 (br, 1H, 4-H), 5.99 (br, 1H, 6-H), 3.43 (br, 1H, 2-H), 1.89 (s, 3H, 7-H), 0.09, 0.05 (each s, each 3H, 1'-H, 1-H). $^{13}\text{C}\{^1\text{H}\}$ -NMR (150.8 MHz, $[\text{D}_6]$ -benzene, 298 K): $\delta = 148.5$ (C5), 135.8 (C3), 132.7 (C4), 128.5 (C6), 52.3 (C2), 15.0 (C7), 0.1 (C1'), -0.3 (C1). **GCOSY** (599.9 MHz / 599.9 MHz, $[\text{D}_6]$ -benzene, 298 K): $\delta^1\text{H} / \delta^1\text{H} = 6.40 / 6.37$ (3-H / 4-H), 6.37 / 5.99 (4-H / 6-H), 5.99 / 3.43 (6-H / 2-H). **GHSQC** (150.8 MHz / 599.9 MHz, $[\text{D}_6]$ -benzene, 298 K): $\delta^{13}\text{C} / \delta^1\text{H} = 135.8 / 6.40$ (C3 / 3-H), 132.7 / 6.37 (C4 / 4-H), 128.5 / 5.99

(C6 / 6-H), 52.3 / 3.43 (C2 / 2-H), 15.0 / 1.89 (C7 / 7-H), 0.1 / 0.09 (C1' / 1'-H), -0.3 / 0.05 (C1 / 1-H).

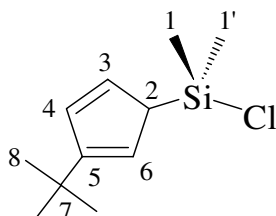


(4d) Yield 2.36 g (78 %, yellow oil). **¹H-NMR** (599.9 MHz, [D₆]-benzene, 298 K): δ = 6.52 (br, 1H, 3-H), 6.40 (br, 1H, 4-H), 6.03 (br, 1H, 6-H), 3.37 (br, 1H, 2-H), 2.59 (sept, 1H, ³J_{HH} = 6.9 Hz, 7-H), 1.08, 1.07 (each d, each 3H, ³J_{HH} = 6.9 Hz, 8'-H, 8-H), 0.09, 0.06 (each s, each 3H, 1'-H, 1-H). **¹³C{¹H}-NMR** (150.8 MHz, [D₆]-benzene, 298 K): δ = 145.4 (C5), 133.6 (C3), 132.6 (C4), 123.2 (C6), 51.8 (C2), 29.2 (C7), 23.0 (C8'), 22.5 (C8), 0.1 (C1'), -0.2 (C1). **GCOSY** (599.9 MHz / 599.9 MHz, [D₆]-benzene, 298 K): δ¹H / δ¹H = 6.52 / 6.40 (3-H / 4-H), 6.40 / 6.03 (4-H / 6-H), 6.03 / 3.37 (6-H / 2-H), 2.59 / 1.08 (7-H, 8'-H, 8-H). **GHSQC** (150.8 MHz / 599.9 MHz, [D₆]-benzene, 298 K): δ¹³C / δ¹H = 133.6 / 6.52 (C3 / 3-H), 132.6 / 6.40 (C4 / 4-H), 123.2 / 6.03 (C6 / 6-H), 51.8 / 3.37 (C2 / 2-H), 29.2 / 2.59 (C7 / 7-H), 23.0 / 1.08 (C8' / 8'-H), 22.5 / 1.07 (C8 / 8-H), 0.1 / 0.09 (C1' / 1'-H), -0.2 / 0.06 (C1 / 1-H).

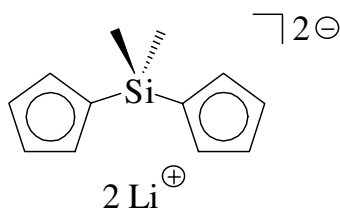


(4c) Yield (2.43 g, 74 %, yellow oil). **¹H-NMR** (599.9 MHz, [D₆]-benzene, 298 K): δ = 6.55 (br, 1H, 3-H), 6.41 (br, 1H, 4-H), 6.05 (br, 1H, 6H), 3.40 (br, 1H, 2-H), 2.26 (m, 1H, cy-CH), 1.82, 1.64, 1.61, 1.23, 1.11 (each m, each 2H, cy-CH₂), 0.10, 0.08 (each s, each 3H, 1'-H, 1-H). **¹³C{¹H}-NMR** (150.8 MHz, [D₆]-benzene, 298 K): δ = 145.5 (C5), 133.8 (C3), 132.3 (C4), 123.5 (C6), 51.9 (C2), 39.0 (cyclohexyl-CH), 33.8, 33.6, 33.4, 26.7, 26.5, (cy-CH₂), 0.0,

-0.1 (C1', C1). **GCOSY** (599.9 MHz / 599.9 MHz, [D₆]-benzene, 298 K): $\delta^1\text{H} / \delta^1\text{H} = 6.55 / 6.41$ (3-H / 4-H), 6.41 / 6.05 (4-H / 6-H), 6.05 / 3.40 (6-H / 2-H), 2.26 / 1.82, 1.23 (each cy-CH / cy-CH₂), 1.82 / 1.64; 1.64 / 1.61, 1.64, 1.11; 1.61 / 1.23; 1.23 / 1.11 (each cy-CH₂ / cy-CH₂). **GHSQC** (150.8 MHz / 599.9 MHz, [D₆]-benzene, 298 K): $\delta^{13}\text{C} / \delta^1\text{H} = 133.8 / 6.55$ (C3 / 3-H), 132.3 / 6.41 (C4 / 4-H), 123.5 / 6.05 (C6 / 6-H), 51.9 / 3.40 (C2 / 2-H), 39.0 / 2.26 (cy-CH / cy-CH), 33.8 / 1.82, 33.6 / 1.23, 33.4 / 1.61, 26.7 / 1.64, 26.5 / 1.11 (each cy-CH₂ / cy-CH₂), 0.0 / 0.08, -0.1 / 0.10 (C1' / 1'-H, C1 / 1-H).

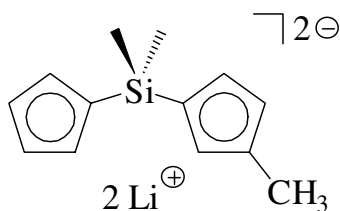


(4e) Yield (4.41 g, 88 %, yellow oil). **¹H-NMR** (599.9 MHz, [D₆]-benzene, 298 K): $\delta = 6.62$ (br, 1H, 3-H), 6.40 (br, 1H, 4-H), 6.05 (br, 1H, 6-H), 3.38 (br, 1H, 2-H), 1.12 (s, 9H, 8-H), 0.09, 0.06 (each s, each 3H, 1'-H, 1-H). **¹³C{¹H}-NMR** (150.8 MHz, [D₆]-benzene, 298 K): $\delta = 157.8$ (C5), 132.5 (C3), 132.3 (C4), 121.9 (C6), 51.3 (C2), 32.0 (C7), 29.9 (C8), -0.3 (C1'), -0.5 (C1). **GCOSY** (599.9 MHz / 599.9 MHz, [D₆]-benzene, 298 K): $\delta^1\text{H} / \delta^1\text{H} = 6.62 / 6.40$ (3-H / 4-H), 6.40 / 6.05 (4-H / 6-H), 6.08 / 3.38 (6-H / 2-H). **GHSQC** (150.8 MHz / 599.9 MHz, [D₆]-benzene, 298 K): $\delta^{13}\text{C} / \delta^1\text{H} = 132.5 / 6.62$ (C3 / 3-H), 132.3 / 6.40 (C4 / 4-H), 121.9 / 6.05 (C6 / 6-H), 51.3 / 3.38 (C2 / 2-H), 29.9 / 1.12 (C8 / 8-H), -0.3 / 0.09 (C1' / 1'-H), -0.5 / 0.06 (C1 / 1-H).

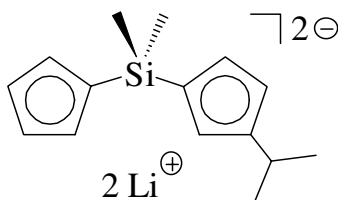


(6a) Yield 5.72 g (94 %). **¹H-NMR** (200.1 MHz, [D₆]-benzene : [D₈]-thf = 10 : 1, 298 K): $\delta = 6.08, 5.96$ (each pt, each 4H, C₅H₄), 0.51 (s, 6H, Si(CH₃)₂). **¹³C{¹H}-NMR** (50.3 MHz, [D₆]-

benzene : [D₈]-thf =10 : 1, 298 K): δ = 113.9 (ipso-C₅H₄), 111.2, 106.2 (C₅H₄), 1.3 (Si(CH₃)₂).

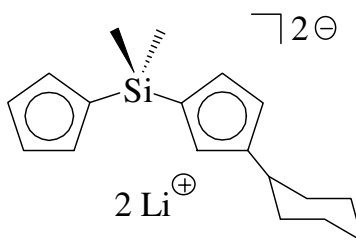


(6b) Yield 2.56 g (80 %). **Mp** 244 °C. **IR** (KBr): $\tilde{\nu}$ = 3076 (vs), 2953 (vs), 1439 (m), 1406 (m), 1355 (m), 1248 (vs), 1182 (s), 1096 (vs), 1038 (vs), 823 (vs), 764 (vs) cm⁻¹. **¹H-NMR** (599.9 MHz, [D₈]-thf, 298 K): δ = 5.87, 5.75 (each pt, each 2H, Cp), 5.70, 5.61, 5.50 (each m, each 1H, MeCp), 2.08 (s, 3H, MeCp-CH₃), 0.32 (s, 6H, Si(CH₃)₂). **¹³C{¹H}-NMR** (150.8 MHz, [D₈]-thf, 298 K): δ = 117.0 (quart. MeCp), 114.5 (quart. Cp-CSi), 113.3 (quart. MeCp-CSi), 111.8, 111.0, 107.5 (each MeCp), 111.5, 106.4 (each Cp), 15.5 (MeCp-CH₃), 1.8 (Si(CH₃)₂). **GCOSY** (599.9 MHz / 599.9 MHz, [D₈]-thf, 298 K): $\delta^1\text{H} / \delta^1\text{H}$ = 5.87 / 5.75 (Cp / Cp), 5.70 / 5.61, 5.50; 5.61 / 5.50 (MeCp / MeCp). **GHSQC** (150.8 MHz / 599.9 MHz, [D₈]-thf, 298 K): $\delta^{13}\text{C} / \delta^1\text{H}$ = 111.8 / 5.61, 111.0 / 5.70, 107.5 / 5.50 (MeCp / MeCp), 111.5 / 5.87, 106.4 / 5.75 (Cp / Cp), 15.5 / 2.08 (MeCp-CH₃ / MeCp-CH₃), 1.7 / 0.32 (Si(CH₃)₂ / Si(CH₃)₂). **GHMBC** (150.8 MHz / 599.9 MHz, [D₈]-thf, 298 K): $\delta^{13}\text{C} / \delta^1\text{H}$ = 117.0 / 5.70, 5.61, 5.50 (quart. MeCp-C / MeCp), 114.5 / 5.70, 5.61, 5.50, 0.32 (quart. MeCp-CSi / MeCp, Si(CH₃)₂), 113.3 / 5.87, 5.75, 0.32 (quart. Cp-CSi / Cp, Si(CH₃)₂). **Anal. Calcd** for C₁₃H₁₆SiLi₂ (207.3): C 72.88, H 7.53; found C 72.88, H 7.23.



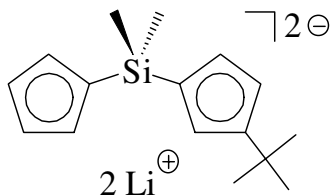
(6d) Yield 1.53 g (77 %). **Mp** 249 °C. **IR** (KBr): $\tilde{\nu}$ = 3077 (vs), 2960 (vs), 2871 (s), 1466 (m), 1443 (m), 1408 (m), 1356 (m), 1249 (vs), 1178 (s), 1037 (vs), 955 (m), 813 (vs), 781 (vs) cm⁻¹. **¹H-NMR** (599.9 MHz, [D₈]-thf, 298 K): δ = 5.96, 5.79 (each pt, each 2H, Cp), 5.82, 5.79, 5.67 (each m, each 1H, iPrCp), 2.81 (sept, 1H, ³J_{HH} = 7.2 Hz, iPr-CH), 1.16 (d, 6H, ³J_{HH}

= 7.2 Hz, *iPr-CH*₃), 0.30 (s, 6H, Si(CH₃)₂). **¹³C{¹H}-NMR** (150.8 MHz, [D₈]-thf, 298 K): δ = 130.4 (quart. *iPrCp*), 114.4 (quart. *iPrCp-CSi*), 112.2 (quart. Cp-CSi), 111.5, 106.0 (each Cp), 110.7, 108.6, 103.9 (each *iPrCp*), 29.9 (*iPr-CH*), 26.4 (*iPr-CH*₃), 2.0 (Si(CH₃)₂). **GCOSY** (599.9 MHz / 599.9 MHz, [D₈]-thf, 298 K): δ¹H / δ¹H = 5.96 / 5.79 (Cp / Cp), 5.82 / 5.79, 5.67; 5.79 / 5.67 (each *iPrCp* / *iPrCp*), 2.81 / 1.16 (*iPr-CH* / *iPr-CH*₃). **GHSQC** (50.1 MHz / 599.9 MHz, [D₈]-thf, 298 K): δ¹³C / δ¹H = 111.5 / 5.96, 106.0 / 5.79 (each Cp / Cp), 110.7 / 5.82, 108.6 / 5.79, 103.9 / 5.67 (each *iPrCp* / *iPrCp*), 29.9 / 2.81 (*iPr-CH* / *iPr-CH*), 26.4 / 1.16 (*iPr-CH*₃ / *iPr-CH*₃), 2.0 / 0.30 (Si(CH₃)₂ / Si(CH₃)₂). **GHMBC** (150.8 MHz / 599.9 MHz, [D₈]-thf, 298 K): δ¹³C / δ¹H = 130.4 / 5.82, 5.79, 5.67 (quart. *iPrCp* / each *iPrCp*), 114.4 / 5.82, 5.79, 5.67, 0.30 (quart. *iPrCp-CSi* / each *iPrCp*, Si(CH₃)₂), 112.2 / 5.96, 5.79, 0.30 (quart. Cp-CSi / each Cp-CH, Si(CH₃)₂). **Anal. Calcd** for C₁₅H₂₀SiLi₂ (242.3): C 74.36, H 8.32; found C 74.71, H 8.61.

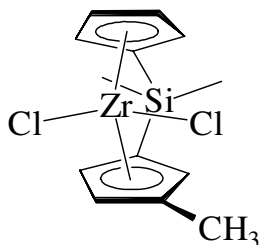


(6c) Yield 3.81 g (89 %). **Mp** 274 °C. **IR** (KBr): $\tilde{\nu}$ = 3076 (w), 2926 (vs), 2846 (s), 1458 (m), 1407 (s), 1355 (w), 1251 (s), 1171 (m), 1101 (w), 1033 (s), 833 (vs) cm⁻¹. **¹H-NMR** (599.9 MHz, [D₈]-thf, 298 K): δ = 5.95, 5.79 (each pt, each 2H, Cp), 5.81, 5.77, 5.65 (each pt, each 1H, cyCp), 2.41 (m, 1H, cy-CH), 1.91, 1.74, 1.33, 1.28 (each m, each 2H, cy-CH₂), 1.66, 1.20 (each m, each 1H, cy-CH₂), 0.30 (s, 6H, Si(CH₃)₂). **¹³C{¹H}-NMR** (150.8 MHz, [D₈]-thf, 298 K): δ = 129.5 (quart. cyCp), 114.2 (quart. cyCp-CSi), 111.7 (quart. Cp-CSi), 111.3, 105.8 (each Cp), 110.3, 108.3, 103.7 (each cyCp), 40.2 (cy-CH), 37.2, 28.2, 27.7 (each cy-CH₂), 1.7 (Si(CH₃)₂). **GCOSY** (599.9 MHz / 599.9 MHz, [D₈]-thf, 298 K) : δ¹H / δ¹H = 5.95 / 5.79 (Cp / Cp), 5.81 / 5.77, 5.77 / 5.65 (each cyCp / cyCp). (The cyclohexyl cross resonances are not listed). **GHSQC** (150.8 MHz / 599.9 MHz, [D₈]-thf, 298 K): δ¹³C / δ¹H = 111.3 / 5.95, 105.8 / 5.79 (each Cp / Cp), 110.3 / 5.81, 108.3 / 5.77, 103.7 / 5.65 (each cyCp / cyCp), 40.2 / 2.41 (cy-CH / cy-CH), 37.2 / 1.91, 1.28; 28.2 / 1.74, 1.33; 27.7 / 1.66, 1.20 (cy-CH₂ / cy-CH₂), 1.7 / 0.30 (Si(CH₃)₂ / Si(CH₃)₂). **GHMBC** (150.8 MHz / 599.9 MHz, [D₈]-thf, 298 K): δ¹³C / δ¹H = 129.5 / 5.81, 5.77, 5.65 (quart. cyCp / each cyCp-CH), 114.2 / 5.81, 5.77, 5.65, 0.18 (quart.

cyCp-CSi / each cyCp, Si(CH₃)₂, 111.7 / 5.95, 5.79, 0.18 (quart. Cp-CSi / each Cp, Si(CH₃)₂). **Anal. Calcd** for C₁₈H₂₄SiLi₂ (288.4): C 76.57, H 8.57; found C 76.85, H 8.83.

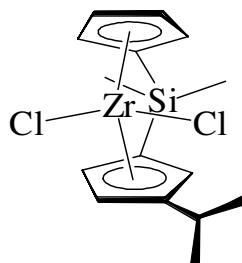


(6e) Yield 4.61 g (86 %). **Mp** 265 °C. **IR** (KBr): $\tilde{\nu}$ = 3080 (w), 2962 (vs), 2873 (s), 1465 (s), 1370 (s), 1352 (m), 1252 (vs), 1104 (vs), 1039 (vs), 956 (s), 814 (vs) cm⁻¹. **¹H-NMR** (599.9 MHz, [D₈]-thf, 298 K): δ = 5.96, 5.79 (each pt, each 2H, Cp-CH), 5.83 (m, 2H, tBuCp), 5.73 (m, 1H, tBuCp), 1.21 (s, 9H, tBu-CH₃), 0.31 (s, 6H, Si(CH₃)₂). **¹³C{¹H}-NMR** (150.8 MHz, [D₈]-thf, 298 K): δ = 133.5 (quart. tBuCp), 114.2 (quart. tBuCp-CSi), 111.4 (quart. Cp-CSi), 111.5, 105.8 (each Cp), 110.6, 107.2, 103.6 (each tBuCp), 33.9 (tBu-CH₃), 32.4 (C(CH₃)₃), 1.9 (Si(CH₃)₂). **GCOSY** (599.9 MHz / 599.9 MHz, [D₈]-thf, 298 K) : $\delta^1\text{H} / \delta^1\text{H}$ = 5.96 / 5.79 (Cp / Cp), 5.83 / 5.73 (tBuCp / tBuCp). **GHSQC** (150.8 MHz / 599.9 MHz, [D₈]-thf, 298 K): $\delta^{13}\text{C} / \delta^1\text{H}$ = 111.4 / 5.96, 105.8 / 5.79 (each Cp / Cp), 110.6 / 5.83, 107.2 / 5.83, 103.9 / 5.73 (each tBuCp / tBuCp), 33.9 / 1.21 (tBu-CH₃ / tBu-CH₃), 1.9 / 0.31 (Si(CH₃)₂ / Si(CH₃)₂). **GHMBC** (150.8 MHz / 599.9 MHz, [D₈]-thf, 298 K): $\delta^{13}\text{C} / \delta^1\text{H}$ = 133.5 / 5.83, 5.73 (quart. tBuCp / each tBuCp), 114.2 / 5.83, 5.73, 0.31 (quart. tBuCp-CSi / each tBuCp, Si(CH₃)₂), 111.4 / 5.96, 5.79, 0.32 (quart. Cp-CSi / each Cp, Si(CH₃)₂). **Anal. Calcd** for C₁₆H₂₂SiLi₂ (256.5): C 74.98, H 8.65; found C 75.69, H 9.08.



(7b) IR (KBr): $\tilde{\nu}$ = 3062 (w), 2951 (s), 2919 (s), 1454 (s), 1397 (vs), 1258 (vs), 1182 (vs), 1050 (vs), 993 (s), 923 (vs), 828 (vs) cm⁻¹. **GCOSY** (599.9 MHz / 599.9 MHz, [D₆]-benzene, 298 K): $\delta^1\text{H} / \delta^1\text{H}$ = 6.87 / 6.75, 5.35; 6.75 / 5.58, 5.58 / 5.35 (each Cp / Cp) 6.44 / 5.54, 5.06

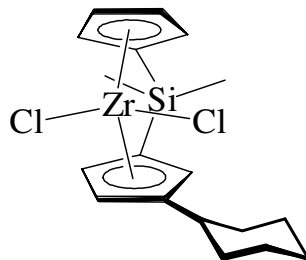
(MeCp / MeCp). **GHSQC** (150.8 MHz / 599.9 MHz, [D₆]-benzene, 298 K): $\delta^{13}\text{C} / \delta^1\text{H} = 128.2 / 6.44, 115.5 / 5.54, 114.0 / 5.06$ (MeCp / MeCp), $127.9 / 6.87, 127.1 / 6.75, 114.2 / 5.58, 113.0 / 5.35$ (each Cp / Cp), $15.5 / 2.21$ (MeCp-CH₃ / MeCp-CH₃), $-5.6 / 0.12, -6.0 / 0.14$ (each Si(CH₃)₂ / Si(CH₃)₂). **GHMBC** (150.8 MHz / 599.9 MHz, [D₆]-benzene, 298 K): $\delta^{13}\text{C} / \delta^1\text{H} = 138.9 / 6.44, 5.54, 5.06$ (quart. MeCp / each MeCp), $107.6 / 6.44, 5.54, 5.06, 0.14, 0.12$ (quart. MeCp-CSi / each MeCp, each Si(CH₃)₂), $107.5 / 6.87, 6.75, 5.58, 5.35, 0.14, 0.12$ (quart. Cp-CSi / each Cp, each Si(CH₃)₂).



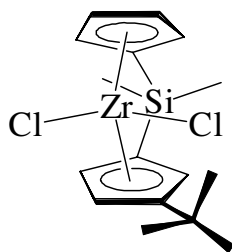
(7d) IR (KBr): $\tilde{\nu} = 3075$ (m), 2964 (vs), 2873 (s), 1461 (s), 1402 (m), 1363 (s), 1298 (m), 1264 (vs), 1167 (vs), 1114 (s), 1043 (vs), 918 (s), 820 (vs) cm^{-1} . **GCOSY** (599.9 MHz / 599.9 MHz, [D₆]-benzene, 298 K): $\delta^1\text{H} / \delta^1\text{H} = 6.83 / 6.80, 5.45; 6.80 / 5.54; 5.54 / 5.45$ (each Cp / Cp), $6.67 / 5.53, 6.67 / 5.29, 5.53 / 5.29$ (each iPrCp / iPrCp), $3.29 / 1.32, 3.29 / 1.09$ (each iPr-CH / iPr-CH₃). **GHSQC** (150.8 MHz / 599.9 MHz, [D₆]-benzene, 298 K): $\delta^{13}\text{C} / \delta^1\text{H} = 128.8 / 6.80, 126.6 / 6.83, 114.3 / 5.45, 112.9 / 5.54$ (each Cp / Cp), $126.4 / 6.67, 113.9 / 5.53, 113.1 / 5.29$ (each iPrCp / iPrCp), $29.0 / 3.29$ (iPr-CH / iPr-CH), $24.8 / 1.09, 21.4 / 1.32$ (iPr-CH₃ / iPr-CH₃), $-5.5 / 0.17, -6.0 / 0.09$ (each Si(CH₃)₂ / Si(CH₃)₂). **GHMBC** (150.8 MHz / 599.9 MHz, [D₆]-benzene, 298 K): $\delta^{13}\text{C} / \delta^1\text{H} = 148.8 / 6.67, 5.53, 5.29$ (quart. iPrCp / each iPrCp), $107.7 / 6.67, 5.53, 5.29, 0.17, 0.09$ (quart. iPrCp-CSi / each iPrCp, each Si(CH₃)₂), $107.5 / 6.83, 6.80, 5.54, 5.45, 0.17, 0.09$ (quart. Cp-CSi / each Cp, each Si(CH₃)₂).

X-ray crystal structure analysis of **7d**: formula C₁₅H₂₀Cl₂SiZr, $M = 390.52$, colourless crystal $0.20 \times 0.20 \times 0.15$ mm, $a = 7.946(1), b = 9.841(1), c = 12.337(1)$ Å, $\alpha = 73.36(1), \beta = 77.47(1), \gamma = 68.24(1)^\circ$, $V = 851.8(2)$ Å³, $\rho_{\text{calc}} = 1.523$ g cm⁻³, $\mu = 10.15$ cm⁻¹, empirical absorption correction ($0.823 \leq T \leq 0.863$), $Z = 2$, triclinic, space group *P1*bar (No. 2), $\lambda = 0.71073$ Å, $T = 198$ K, ω and φ scans, 9237 reflections collected ($\pm h, \pm k, \pm l$), $[(\sin\theta)/\lambda] = 0.66$ Å⁻¹, 4025 independent ($R_{\text{int}} = 0.036$) and 3279 observed reflections [$I \geq 2 \sigma(I)$], 176 refined

parameters, $R = 0.033$, $wR^2 = 0.059$, max. residual electron density 0.34 (-0.37) e Å⁻³, hydrogens calculated and refined as riding atoms.



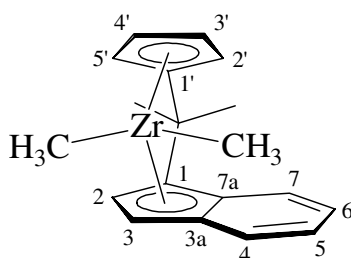
(7c) IR (KBr): $\tilde{\nu} = 3078$ (s), 2923 (vs), 2843 (s), 1449 (vs), 1400 (s), 1308 (m), 1258 (vs), 1167 (vs), 1107 (vs), 1053 (vs), 920 (s), 830 (broad), 677 (vs) cm⁻¹. **GCOSY** (599.9 MHz / 599.9 MHz, [D₆]-benzene, 298 K): $\delta^1\text{H} / \delta^1\text{H} = 6.83 / 6.81, 5.47; 6.81 / 5.55, 5.55 / 5.47$ (each Cp / Cp), 6.69 / 5.54, 5.30; 5.54 / 5.30 (each cyCp / cyCp). (no assignment of the cyclohexyl fragment) **GHSQC** (150.8 MHz / 599.9 MHz, [D₆]-benzene, 298 K): $\delta^{13}\text{C} / \delta^1\text{H} = 128.9 / 6.81, 126.5 / 6.84, 114.2 / 5.47, 113.2 / 5.55$ (each Cp / Cp), 126.6 / 6.69, 113.9 / 5.54, 112.8 / 5.30 (cyCp / cyCp-CH), 38.6 / 2.99 (cy-CH / cy-CH), 35.9 / 1.89, 35.9 / 1.14, 31.8 / 2.32, 31.8 / 1.32, 26.9 / 1.67, 26.9 / 1.43, 26.5 / 1.70, 26.5 / 1.38, 26.4 / 1.60, 26.4 / 1.06 (cy-CH₂ / cy-CH₂), -5.5 / 0.18, -6.0 / 0.11 (Si(CH₃)₂ / Si(CH₃)₂). **GHMBC** (150.8 MHz / 599.9 MHz, [D₆]-benzene, 298 K): $\delta^{13}\text{C} / \delta^1\text{H} = 147.8 / 6.69, 5.54, 5.30$ (quart. cyCp / each cyCp), 107.6 / 6.69, 5.54, 5.30, 0.18, 0.11 (quart. cyCp-CSi / each cyCp, each Si(CH₃)₂), 107.3 / 6.83, 6.81, 5.55, 5.47, 0.18, 0.11 (quart. Cp-CSi / each Cp, each Si(CH₃)₂).



(7e) IR (KBr): $\tilde{\nu} = 3072$ (vs), 2950 (vs), 2870 (s), 1490 (s), 1460 (vs), 1398 (vs), 1362 (vs), 1270 (vs), 1184 (vs), 1087 (vs), 1050 (vs), 909 (vs), 836 (vs) cm⁻¹. **GCOSY** (599.9 MHz / 599.9 MHz, [D₆]-benzene, 298 K): $\delta^1\text{H} / \delta^1\text{H} = 6.84 / 6.65, 5.45; 6.65 / 5.65, 5.65 / 5.45$ (each

Cp / Cp), 6.82 / 5.72, 5.54; 5.72 / 5.54 (tBuCp / tBuCp). **GHSQC** (150.8 MHz / 599.9 MHz, [D₆]-benzene, 298 K): $\delta^{13}\text{C} / \delta^1\text{H} = 130.9 / 6.84, 124.9 / 6.65, 117.5 / 5.65, 111.4 / 5.45$ (each Cp / Cp), 129.5 / 6.82, 113.8 / 5.45, 113.7 / 5.54 (each tBuCp / tBuCp), 30.9 / 1.42 (tBu-CH₃ / tBu-CH₃), -4.5 / 0.22, -6.6 / 0.09 (each Si(CH₃)₂ / Si(CH₃)₂). **GHMBC** (150.8 MHz / 599.9 MHz, [D₆]-benzene, 298 K): $\delta^{13}\text{C} / \delta^1\text{H} = 150.4 / 6.82, 5.72, 5.54$ (quart. tBuCp / each tBuCp), 107.9 / 6.82, 5.72, 5.54, 0.22, 0.09 (quart. tBuCp-CSi / each tBuCp, each Si(CH₃)₂), 105.7 / 6.84, 6.65, 5.65, 5.45, 0.22, 0.09 (quart. Cp-CSi / each Cp, each Si(CH₃)₂).

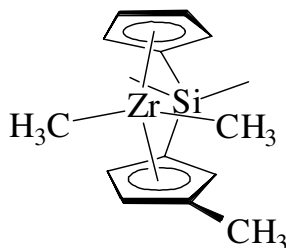
X-ray crystal structure analysis of **7e**: formula C₁₆H₂₂Cl₂SiZr, *M* = 404.55, light-yellow crystal 0.35 x 0.15 x 0.10 mm, *a* = 9.939(1), *b* = 12.730(1), *c* = 15.109(1) Å, $\beta = 106.39(1)^\circ$, *V* = 1834.0(3) Å³, $\rho_{\text{calc}} = 1.465 \text{ g cm}^{-3}$, $\mu = 9.45 \text{ cm}^{-1}$, empirical absorption correction (0.733 ≤ *T* ≤ 0.911), *Z* = 4, monoclinic, space group *P*2₁/*n* (No. 14), $\lambda = 0.71073 \text{ Å}$, *T* = 198 K, ω and ϕ scans, 7698 reflections collected ($\pm h, \pm k, \pm l$), $[(\sin\theta)/\lambda] = 0.68 \text{ Å}^{-1}$, 4518 independent (*R*_{int} = 0.031) and 3404 observed reflections [*I* ≥ 2 σ(*I*)], 269 refined parameters, *R* = 0.071, *wR*² = 0.166, max. residual electron density 0.66 (-1.00) e Å⁻³, asymmetric unit contains both enantiomers in a ratio of 0.72(1) to 0.28, refined with the PART command, carbon atoms of the minor enantiomer are treated with isotropic thermal displacement parameters, in addition geometrical restrains are used for the the Cp-rings (AFIX command) and the whole molecule (SAME command), hydrogens calculated and refined as riding atoms.



(2) **¹H-NMR** (599.9 MHz, [D₆]-benzene, 298 K): $\delta = 7.42$ (d, 1H, $^3J_{\text{HH}} = 8.6$, 4-H), 7.20 (d, 1H, $^3J_{\text{HH}} = 8.9$ Hz, 7-H), 7.07 (dd, 1H, $^3J_{\text{HH}} = 8.6$ Hz, $^3J_{\text{HH}} = 7.5$ Hz, 5-H), 6.73 (dd, 1H, $^3J_{\text{HH}} = 8.9$, $^3J_{\text{HH}} = 7.5$ Hz, 6-H), 6.59 (dd, 1H, $^3J = 3.5$ Hz, $^4J = 0.9$ Hz, 3-H), 6.25 (m, 1H, 4'-H), 6.18 (m, 1H, 3'-H), 5.50 (d, 1H, $^3J = 3.5$ Hz, 2-H), 5.23 (m, 1H, 2'-H), 5.10 (m, 1H, 5'-H), 1.52 (s, 3H, C-CH₃(syn)), 1.29 (s, 3H, C-CH₃(anti)), 0.05 (s, 3H, Zr-CH₃(anti)), -1.01 (s, 3H, Zr-CH₃(syn)). **¹³C{¹H}-NMR** (150.8 MHz, [D₆]-benzene, 298 K): $\delta = 127.1, 119.3$ (C3a,

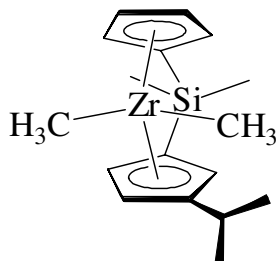
C7a), 125.9 (C4, $^1J_{\text{CH}} = 159.9$ Hz), 124.1 (C6, $^1J_{\text{CH}} = 158.7$ Hz), 123.8 (C7, $^1J_{\text{CH}} = 160.5$ Hz), 123.7 (C5, $^1J_{\text{CH}} = 159.3$ Hz), 114.7 (C4', $^1J_{\text{CH}} = 173.8$ Hz), 113.8 (C1'), 113.4 (C3', $^1J_{\text{CH}} = 177.2$ Hz), 113.0 (C2, $^1J_{\text{CH}} = 165.4$ Hz), 104.6 (C3, $^1J_{\text{CH}} = 173.7$ Hz), 103.9 (C5', $^1J_{\text{CH}} = 168.8$ Hz), 103.6 (C2', $^1J_{\text{CH}} = 170.4$ Hz), 98.0 (C1), 38.4 (C(CH₃)₂), 34.4 (Zr-CH₃(syn), $^1J_{\text{CH}} = 117.0$ Hz), 30.7 (Zr-CH₃(anti), $^1J_{\text{CH}} = 115.6$ Hz), 26.2 (C-CH₃(anti), $^1J_{\text{CH}} = 125.9$ Hz), 25.3 (C-CH₃(syn), $^1J_{\text{CH}} = 126.4$ Hz). (The $^1J_{\text{CH}}$ -coupling constants are obtained with a $^{13}\text{C}\{\text{gated}\}$ NMR experiment.)

X-ray crystal structure analysis of **2**: formula C₁₉H₂₂Zr, $M = 341.59$, yellow crystal 0.15 x 0.10 x 0.10 mm, $a = 7.504(1)$, $b = 7.611(1)$, $c = 13.860(1)$ Å, $\alpha = 84.10(1)$, $\beta = 88.18(1)$, $\gamma = 80.42(1)^\circ$, $V = 776.3(2)$ Å³, $\rho_{\text{calc}} = 1.461$ g cm⁻³, $\mu = 6.96$ cm⁻¹, empirical absorption correction ($0.903 \leq T \leq 0.934$), $Z = 2$, triclinic, space group $P1bar$ (No. 2), $\lambda = 0.71073$ Å, $T = 198$ K, ω and φ scans, 5632 reflections collected ($\pm h, \pm k, \pm l$), $[(\sin\theta)/\lambda] = 0.68$ Å⁻¹, 3774 independent ($R_{\text{int}} = 0.024$) and 3276 observed reflections [$I \geq 2 \sigma(I)$], 185 refined parameters, $R = 0.035$, $wR^2 = 0.079$, max. residual electron density 0.43 (-0.49) e Å⁻³, hydrogens calculated and refined as riding atoms.

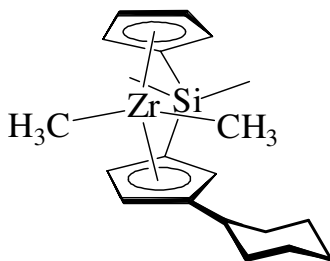


(8b) IR (KBr): $\tilde{\nu} = 2960$ (s), 2923 (m), 1446 (w), 1409 (s), 1311 (m), 1257 (vs), 1196 (s), 1099 (vs), 1026 (vs), 916 (w), 812 (vs) cm⁻¹. **GCOSY** (599.9 MHz / 599.9 MHz, [D₆]-benzene, 298 K): $\delta^1\text{H} / \delta^1\text{H} = 6.74 / 6.70, 5.34; 6.70 / 5.49, 5.49 / 5.34$ (each Cp / Cp), 6.37 / 5.39, 5.08; 5.39 / 5.08 (each MeCp / MeCp). **GHSQC** (150.8 MHz / 599.9 MHz, [D₆]-benzene, 298 K): $\delta^{13}\text{C} / \delta^1\text{H} = 121.4 / 6.37, 112.9 / 5.39, 112.6 / 5.08$ (each MeCp / MeCp), 120.4 / 6.74, 120.3 / 5.34, 112.4 / 5.49, 112.0 / 5.34 (each Cp / Cp), 32.7 / -0.16, 29.0 / -0.08 (each Zr(CH₃)₂ / Zr(CH₃)₂), 14.8 / 2.16 (MeCp-CH₃ / MeCp-CH₃), -5.3 / 0.15, -5.5 / 0.14 (each Si(CH₃)₂ / Si(CH₃)₂). **GHMBC** (150.8 MHz / 599.9 MHz, [D₆]-benzene, 298 K): $\delta^{13}\text{C} / \delta^1\text{H} = 130.1 / 6.37, 5.39, 5.08$ (quart. MeCp / each MeCp), 100.2 / 6.37, 5.39, 5.08, 0.15, 0.14

(quart. MeCp-CSi / each MeCp-CH, each Si(CH₃)₂), 100.1 / 6.74, 6.70, 5.49, 0.15, 0.14
 (quart. Cp-CSi / each Cp-CH, each Si(CH₃)₂).

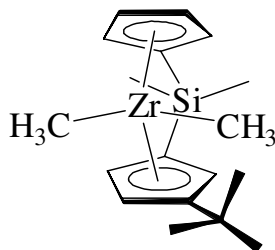


(8d) IR (KBr): $\tilde{\nu}$ = 2932 (vs), 2847 (vs), 1447 (vs), 1402 (s), 1381 (m), 1263 (vs), 1172 (s), 112 (vs), 1047 (vs), 955 (s), 915 (m), 817 (vs) cm⁻¹. **GCOSY** (599.9 MHz / 599.9 MHz, [D₆]-benzene, 298 K): $\delta^1\text{H} / \delta^1\text{H}$ = 6.74 / 6.70, 5.44; 6.70 / 5.42, 5.44 / 5.42 (each Cp / Cp), 6.57 / 5.36, 5.27, 5.36 / 5.27 (each iPrCp / iPrCp), 3.00 / 1.28, 1.20 (iPr-CH / iPr-CH₃). **GHSQC** (150.8 MHz / 599.9 MHz, [D₆]-benzene, 298 K): $\delta^{13}\text{C} / \delta^1\text{H}$ = 121.3 / 6.74, 120.0 / 6.70, 112.7 / 5.44, 111.5 / 5.42 (Cp / Cp), 118.6 / 6.57, 117.7 / 5.36, 110.8 / 5.27 (each iPrCp / iPrCp), 32.1 / -0.13, 28.9 / -0.05 (each Zr(CH₃)₂ / Zr(CH₃)₂), 28.6 / 3.00 (iPr-CH / iPr-CH), 25.3 / 1.20, 22.4 / 1.28 (each iPr-CH₃ / iPr-CH₃), -5.1 / 0.18, -5.7 / 0.12 (Si(CH₃)₂ / Si(CH₃)₂). **GHMBC** (150.8 MHz / 599.9 MHz, [D₆]-benzene, 298 K): $\delta^{13}\text{C} / \delta^1\text{H}$ = 141.7 / 6.57, 5.36, 5.27 (quart. iPrCp / each iPrCp), 100.3 / 6.57, 5.36, 5.27, 0.18, 0.12 (quart. iPrCp-CSi / each iPrCp, each Si(CH₃)₂), 99.8 / 6.74, 6.70, 5.44, 5.42, 0.18, 0.12 (quart. Cp-CSi / each Cp, each Si(CH₃)₂).

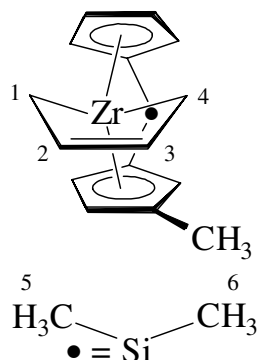


(8c) IR (KBr): $\tilde{\nu}$ = 2947 (w), 2864 (w), 1458 (m), 1406 (m), 1354 (s), 1149 (m), 1114 (s), 1044 (vs), 968 (w), 845 (vs) cm⁻¹. **GCOSY** (599.9 MHz / 599.9 MHz, [D₆]-benzene, 298 K): $\delta^1\text{H} / \delta^1\text{H}$ = 6.75 / 6.71, 5.45; 6.71 / 5.44, 5.45 / 5.44 (each Cp / Cp), 6.59 / 5.38, 5.25; 5.38 / 5.28 (each cyCp / cyCp). (no assignment of the cyclohexyl fragment). **GHSQC** (150.8 MHz /

599.9 MHz, [D₆]-benzene, 298 K): $\delta^{13}\text{C} / \delta^1\text{H} = 121.3 / 6.75, 120.0 / 6.71, 112.8 / 5.44, 111.4 / 5.45$ (each Cp / Cp), $118.8 / 6.59, 111.6 / 5.38, 110.9 / 5.28$ (each cyCp / cyCp), $38.5 / 2.71$ (cy-CH / cy-CH), $32.1 / -0.12, 28.9 / -0.03$ (each Zr(CH₃)₂ / Zr(CH₃)₂), $36.4 / 1.98, 36.4 / 1.31, 32.8 / 2.12, 32.8 / 1.47, 27.0 / 1.72, 27.0 / 1.38, 26.7 / 1.71, 26.7 / 1.36, 26.5 / 1.63, 26.5 / 1.15$ (cy-CH₂ / cy-CH₂), $-5.1 / 0.19, -5.7 / 0.14$ (each Si(CH₃)₂ / Si(CH₃)₂). **GHMBC** (150.8 MHz / 599.9 MHz, [D₆]-benzene, 298 K): $\delta^{13}\text{C} / \delta^1\text{H} = 140.7 / 6.59, 5.38, 5.28, 0.19, 0.14$ (quart. cyCp / each cyCp), $100.3 / 6.59, 5.38, 5.28, 0.19, 0.14$ (quart. cyCp-CSi / each cyCp-CH, each Si(CH₃)₂), $99.7 / 6.75, 6.71, 5.45, 5.44, 0.19, 0.14$ (quart. Cp-CSi / each Cp-CH, each Si(CH₃)₂).



(8e) IR (KBr): $\tilde{\nu} = 2965$ (w), 2877 (w), 1468 (m), 1407 (w), 1374 (m), 1252 (s), 1193 (s), 1089 (s), 1055 (s), 961 (w), 805 (vs) cm^{-1} . **GCOSY** (599.9 MHz / 599.9 MHz, [D₆]-benzene, 298 K): $\delta^1\text{H} / \delta^1\text{H} = 6.74 / 6.56, 5.36, 6.56 / 5.58, 5.58 / 5.36$ (each Cp / Cp), $6.67 / 5.62, 6.67 / 5.32, 5.58 / 5.32$ (each tBuCp / tBuCp). **GHSQC** (150.8 MHz / 599.9 MHz, [D₆]-benzene, 298 K): $\delta^{13}\text{C} / \delta^1\text{H} = 121.2 / 6.74, 119.6 / 6.56, 114.4 / 5.58, 110.4 / 5.36$ (each Cp / Cp), $120.1 / 6.67, 111.9 / 5.32, 110.2 / 5.62$ (each tBuCp / tBuCp), $31.6 / 0.01, 28.2 / 0.00$ (each Zr(CH₃)₂ / Zr(CH₃)₂), $31.3 / 1.37$ (tBu-CH₃ / tBu-CH₃), $-4.3 / 0.21, -6.1 / 0.12$ (Si(CH₃)₂ / Si(CH₃)₂). **GHMBC** (150.8 MHz / 599.9 MHz, [D₆]-benzene, 298 K): $\delta^{13}\text{C} / \delta^1\text{H} = 145.1 / 6.67, 5.62, 5.32$ (quart. tBuCp / each tBuCp), $100.5 / 6.67, 5.62, 5.32, 0.21, 0.12$ (quart. tBuCp-CSi / each tBuCp-CH, each Si(CH₃)₂), $98.6 / 6.74, 6.56, 5.58, 5.36, 0.21, 0.12$ (quart. Cp-CSi / each Cp, each Si(CH₃)₂).

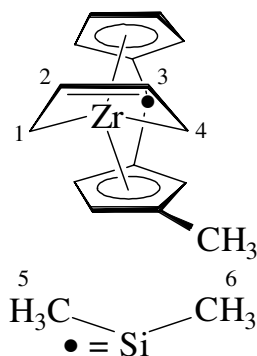


General

IR (KBr): $\tilde{\nu}$ = 2959 (s), 2896 (s), 1499 (m), 1441 (s), 1404 (s), 1303 (w), 1251 (vs), 1191 (s), 1094 (vs), 1031 (s), 822 (vs) cm^{-1} .

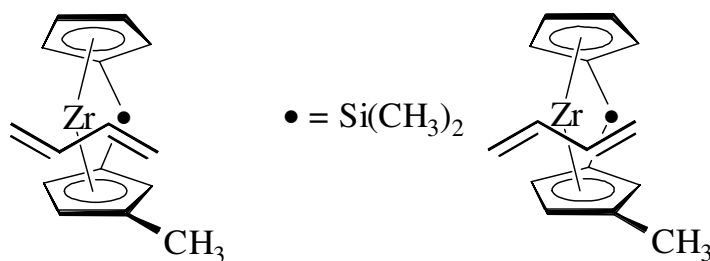
(*s-cis*-17b) Main *s-cis* isomer:

GCOSY (599.9 MHz / 599.9 MHz, $[\text{D}_8]$ -toluene, 268 K): $\delta^1\text{H} / \delta^1\text{H}$ = 5.92 / 5.42, 4.21; 5.42 / 4.21 (each MeCp / MeCp), 5.19 / 4.98, 4.91; 4.98 / 4.91 (each Cp / Cp), 4.79 / 4.69, 3.37, -1.50 (3-H / 2-H, 4_{syn}-H , 4_{anti}-H), 4.69 / 3.36, -0.76 (2-H / 1_{syn}-H , 1_{anti}-H), 3.37 / -1.50 (4_{syn}-H / 4_{anti}-H), 3.36 / -0.76 (1_{syn}-H / 1_{anti}-H). **GHSQC** (150.8 MHz / 599.9 MHz, $[\text{D}_8]$ -toluene, 268 K): $\delta^{13}\text{C} / \delta^1\text{H}$ = 109.9 / 4.92 (Cp / Cp), 112.4 / 4.79 (C3 / 3-H), 110.1 / 4.69 (C2 / 2-H), 109.0 / 5.19 (Cp / Cp), 109.0 / 4.21 (MeCp / MeCp), 103.2 / 4.91 (Cp / Cp), 101.2 / 5.92 (MeCp / MeCp), 100.8 / 4.98 (Cp / Cp), 99.9 / 5.42 (MeCp / MeCp), 54.1 / 3.37, -1.50 (C4 / 4_{syn}-H , 4_{anti}-H), 49.5 / 3.36, -0.76 (C1 / 1_{syn}-H , 1_{anti}-H), 14.7 / 1.70 (MeCp-CH₃ / MeCp-CH₃), -3.6 / 0.42 (C6 / 6-H), -6.5 / 0.29 (C5 / 5-H). **GHMBC** (150.8 MHz / 599.9 MHz, $[\text{D}_8]$ -toluene, 268 K): $\delta^{13}\text{C} / \delta^1\text{H}$ = 142.8 / 5.92, 5.42, 4.21 (quart. MeCp / each MeCp), 99.7 / 5.92, 5.42, 4.21 (quart. MeCp-CSi / each MeCp), 94.1 / 5.25, 4.92, 4.88 (quart. Cp-CSi / each Cp), 102.9, 93.2, -3.6 / 0.42 (quart. MeCp-CSi, quart. Cp-CSi, C6 / 6-H), 102.9, 93.2, -6.5 / 0.29 (quart. MeCp-CSi, quart. Cp-CSi, C5 / 5-H). **1D-TOCSY** (599.9 MHz, $[\text{D}_8]$ -toluene, 268 K): $\delta_{\text{irr}} / \delta_{\text{res}}$ = 5.92 / 5.42, 4.21 (MeCp); 5.19 / 4.98, 4.91 (Cp); 4.79 / 4.69, 3.37, 3.36, -0.76, -1.50 (3-H / 2-H, 4_{syn}-H , 1_{syn}-H , 4_{anti}-H , 1_{anti}-H).



(*s-cis*-17'b) Second *s-cis* isomer

GCOSY (599.9 MHz / 599.9 MHz, [D₈]-toluene, 268 K): $\delta^1\text{H} / \delta^1\text{H} = 5.48 / 5.22, 4.56, 4.25;$
 $5.22 / 4.56, 4.25; 4.56 / 4.25$ (each Cp / Cp), $5.41 / 4.98, 3.75; 4.98 / 3.75$ (each MeCp /
 MeCp), $4.80 / 4.71, 3.12, -0.88$ (3-H / 2-H, $4_{\text{syn}}\text{-H}, 4_{\text{anti}}\text{-H}$), $4.71 / 3.4, -0.83$ (2-H / $1_{\text{syn}}\text{-H},$
 1_{anti}-H), $3.43 / -0.83$ ($1_{\text{syn}}\text{-H} / 1_{\text{anti}}\text{-H}$), $3.12 / -0.88$ ($4_{\text{syn}}\text{-H} / 4_{\text{anti}}\text{-H}$). **GHSQC** (150.8 MHz /
 599.9 MHz, [D₈]-toluene, 268 K): $\delta^{13}\text{C} / \delta^1\text{H} = 112.7 / 4.80$ (C3 / 3-H), $112.0 / 4.71$ (C2 / 2-
 H), $111.2 / 4.25, 111.0 / 4.56, 95.5 / 5.22, 95.0 / 5.48$ (each Cp / Cp), $109.2 / 3.75, 97.3 / 4.98,$
 $96.4 / 5.41$ (each MeCp / MeCp), $51.9 / 3.12, -0.88$ (C4 / $4_{\text{syn}}\text{-H}, 4_{\text{anti}}\text{-H}$), $50.6 / 3.43, -0.83$
 (C1 / $1_{\text{syn}}\text{-H}, 1_{\text{anti}}\text{-H}$), $13.8 / 1.26$ (MeCp-CH₃ / MeCp-CH₃), $-4.8 / 0.41$ (C6 / 6-H), $-6.0 / 0.20$
 (C5 / 5-H). **GHMBC** (150.8 MHz / 599.9 MHz, [D₈]-toluene, 268 K): $\delta^{13}\text{C} / \delta^1\text{H} = 130.0 /$
 $5.41, 4.98, 3.75$ (quart. MeCp / each MeCp), $102.4 / 5.41, 4.98, 3.75$ (quart. MeCp-CSi / each
 MeCp), $94.0 / 5.48, 5.22, 4.56, 4.25$ (quart. Cp-CSi / each Cp), $102.4, 94.0, -4.8 / 0.44$ (quart.
 MeCp-CSi, quart. Cp-CSi, C6 / 6-H), $102.4, 94.0, -6.0 / 0.28$ (quart. MeCp-CSi, quart. Cp-
 CSi, C5 / 5-H). **1D-TOCSY** (599.9 MHz, [D₈]-toluene, 268 K): $\delta_{\text{irr}} / \delta_{\text{res}} = 5.48 / 5.22, 4.56,$
 4.25 (Cp); $5.41 / 4.98, 3.75$ (MeCp); $4.80 / 4.71, 3.43, 3.12, -0.83, -0.88,$ (3-H / 2-H, $1_{\text{syn}}\text{-H},$
 $4_{\text{syn}}\text{-H}, 1_{\text{anti}}\text{-H}, 4_{\text{anti}}\text{-H}$).

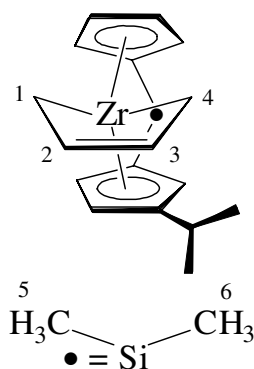


(*s-trans-17b*) Main *s-trans* isomer

GHSQC (150.8 MHz / 599.9 MHz, [D₈]-toluene, 268 K): $\delta^{13}\text{C} / \delta^1\text{H} = 96.5 / 2.89, 95.0 / 2.35$ (each Butadien-CH / Butadien-CH), 60.5 / 3.08, 1.23; 59.8 / 2.61, 1.30 (each Butadien-CH₂ / Butadien-CH₂). **1D-TOCSY** (599.9 MHz, [D₈]-toluene, 268 K): $\delta_{\text{irr}} / \delta_{\text{res}} = 3.08 / 2.89, 2.61, 2.35, 1.30, 1.23$ ($\text{H}_{\text{syn}} / \text{H}_{\text{meso}}, \text{H}_{\text{syn}}, \text{H}_{\text{meso}}, \text{H}_{\text{anti}}, \text{H}_{\text{anti}}$).

(*s-trans-17'b*) Second *s-trans* isomer

1D-TOCSY (599.9 MHz, [D₈]-toluene, 268 K): $\delta_{\text{irr}} / \delta_{\text{res}} = 3.16 / 2.90, 2.77, 2.55, 1.33, 1.29$ ($\text{H}_{\text{syn}} / \text{H}_{\text{meso}}, \text{H}_{\text{syn}}, \text{H}_{\text{meso}}, \text{H}_{\text{anti}}, \text{H}_{\text{anti}}$).



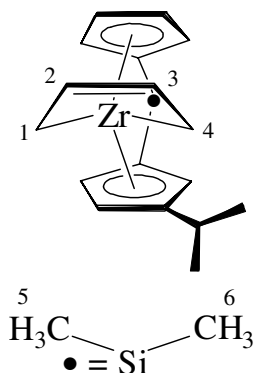
General

IR (KBr): $\tilde{\nu} = 2960$ (s), 2865 (w), 1456 (w), 1420 (w), 1361 (w), 1260 (vs), 1164 (s), 1099 (m), 1033 (s), 967 (w), 916 (w), 807 (vs) cm^{-1} .

(*s-cis-17d*) Main *s-cis* isomer

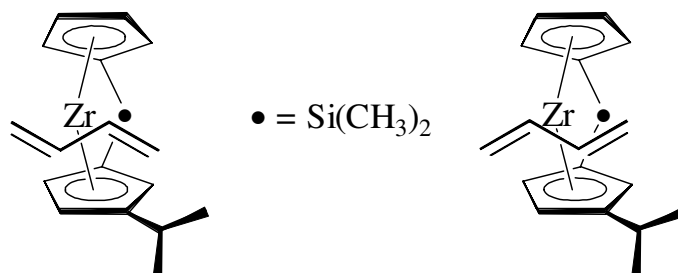
GCOSY (599.9 MHz / 599.9 MHz, [D₈]-toluene, 248 K): $\delta^1\text{H} / \delta^1\text{H} = 5.99 / 5.61, 4.10; 5.61 / 4.10$ (each iPrCp / iPrCp), 5.25 / 4.92, 4.88; 4.92 / 4.88 (each Cp / Cp), 4.78 / 4.6, 3.40, -1.45 (3-H / 2-H, 4_{syn}-H, 4_{anti}-H), 4.66 / 3.36, -0.78 (2-H / 1_{syn}-H, 1_{anti}-H), 3.40 / -1.45 (4_{syn}-H / 4_{anti}-H), 3.36 / -0.78 (1_{syn}-H / 1_{anti}-H). **GHSQC** (150.8 MHz / 599.9 MHz, [D₈]-toluene, 248 K): $\delta^{13}\text{C} / \delta^1\text{H} = 112.7 / 4.78$ (C3 / 3-H), 110.4 / 4.88, 109.1 / 5.25, 102.3 / 4.92, 100.1 / 4.92 (each Cp / Cp), 109.8 / 4.66 (C2 / 2-H), 105.9 / 4.10, 102.7 / 5.99, 96.1 / 5.61 (each iPrCp / iPrCp), 54.0 / 3.40, -1.45 (C4 / 4_{syn}-H, 4_{anti}-H), 50.1 / 3.36, -0.78 (C1 / 1_{syn}-H, 1_{anti}-H), 28.3 / 2.10 (iPr-CH / iPrCp-CH), 25.6 / 1.22, 22.1 / 0.90 (iPr-CH₃ / iPr-CH₃), -3.2 / 0.43 (C6 / 6-H), -6.6 / 0.30 (C5 / 5-H). **GHMBC** (150.8 MHz / 599.9 MHz, [D₈]-toluene, 248 K): $\delta^{13}\text{C} / \delta^1\text{H} = 143.1$

/ 5.99, 5.61, 4.10 (quart. iPrCp / each iPrCp), 101.4 / 5.99, 5.61, 4.10 (quart. iPrCp-CSi / each iPrCp), 94.1 / 5.25, 4.92, 4.88 (quart. Cp-CSi / each Cp), 101.4, 94.1, -3.2 / 0.43 (quart. iPrCp-CSi, quart. Cp-CSi, C6 / 6-H), 101.4, 94.1, -6.6 / 0.30 (quart. iPrCp-CSi, quart. Cp-CSi, C5 / 5-H). **1D-TOCSY** (599.9 MHz, [D₈]-toluene, 248 K): $\delta_{\text{irr}} / \delta_{\text{res}} = 5.99 / 5.61, 4.10$ (iPrCp); 5.25 / 4.92, 4.88 (Cp); 4.78 / 4.66, 3.40, 3.36, -0.78, -1.45 (3-H / 2-H, 4_{syn}-H, 1_{syn}-H, 1_{anti}-H, 4_{anti}-H).



(*s-cis*-17'd) Second *s-cis* isomer

GCOSY (599.9 MHz / 599.9 MHz, [D₈]-toluene, 248 K): $\delta^1\text{H} / \delta^1\text{H} = 5.48 / 5.22, 4.56, 4.25;$ 5.22, 4.25; 4.56 / 4.25 (each Cp / Cp), 5.41 / 4.98, 3.75; 4.98 / 3.75 (each iPrCp / iPrCp), 4.80 / 4.71, 3.12, -0.88 (3-H / 2-H, 4_{syn}-H, 4_{anti}-H), 4.71 / 3.43, -0.83 (2-H / 1_{syn}-H, 1_{anti}-H), 3.43 / -0.83 (1_{syn}-H / 1_{anti}-H), 3.12 / -0.88 (4_{syn}-H / 4_{anti}-H). **GHSQC** (150.8 MHz / 599.9 MHz, [D₈]-toluene, 248 K): $\delta^{13}\text{C} / \delta^1\text{H} = 118.5 / 5.89, 105.0 / 4.24, 104.5 / 6.04, 99.0 / 5.67$ (each Cp / Cp), 112.3 / 4.83 (C3 / 3-H), 111.5 / 4.77, 105.4 / 5.28, 98.7 / 4.87 (each iPrCp / iPrCp), 111.2 / 4.79 (C2 / 2-H), , 52.5 / 3.20, -0.91 (C4 / 4_{syn}-H, 4_{anti}-H), 50.6 / 3.41, -0.79 (C1 / 1_{syn}-H, 1_{anti}-H), 28.2 / 1.87, 26.5 / 1.02 (each iPr-CH₃ / iPr-CH₃), 21.9 / 0.86 (iPr-CH₃ / iPr-CH₃), -3.1 / 0.44 (C6 / 6-H), -6.7 / 0.29 (C5 / 5-H). **GHMBC** (150.8 MHz / 599.9 MHz, [D₈]-toluene, 248 K): $\delta^{13}\text{C} / \delta^1\text{H} = 130.4 / 5.28, 4.87, 4.77$ (quart. iPrCp / each iPrCp), 101.3 / 5.28, 4.87, 4.77 (quart. iPrCp-CSi / each iPrCp), 93.8 / 6.04, 5.89, 5.67, 4.24 (quart. Cp-CSi / each Cp), 101.3, 93.8, -3.1 / 0.44 (quart. iPrCp-CSi, quart. Cp-CSi, C6 / 6-H), 101.3, 93.8, -6.7 / 0.29 (quart. iPrCp-CSi, quart. Cp-CSi, C5 / 5-H). **1D-TOCSY** (599.9 MHz, [D₈]-toluene, 248 K): $\delta_{\text{irr}} / \delta_{\text{res}} = 6.04 / 5.89, 5.67, 4.24$ (Cp); 5.28 / 4.87, 4.77 (iPrCp); 4.83 / 4.79, 3.41, 3.20, -0.79, -0.91 (3-H / 2-H, 1_{syn}-H, 4_{syn}-H, 1_{anti}-H, 4_{anti}-H).

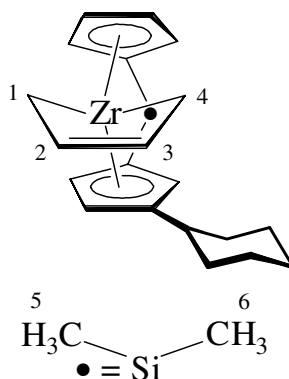


(*s-trans*-17d) Main *s-trans* isomer

GHSQC (150.8 MHz / 599.9 MHz, [D₈]-toluene, 248 K): $\delta^{13}\text{C} / \delta^1\text{H} = 98.1 / 2.88, 97.9 / 2.55$ (each Butadien-CH / Butadien-CH), 61.2 / 2.61, 1.38; 60.8 / 3.16, 1.23 (each Butadien-CH₂ / Butadien-CH₂). **1D-TOCSY** (599.9 MHz, [D₈]-toluene, 248 K): $\delta_{\text{irr}} / \delta_{\text{res}} = 3.16 / 2.88, 2.61, 2.55, 1.38, 1.23$ (H_{syn} / H_{meso}, H_{syn}, H_{meso}, H_{anti}, H_{anti}).

(*s-trans*-17'd) Second *s-trans* isomer

1D-TOCSY (599.9 MHz, [D₈]-toluene, 248 K): $\delta_{\text{irr}} / \delta_{\text{res}} = 3.24 / 3.30, 2.97, 2.68, 1.43, 1.32$ (H_{syn} / H_{meso}, H_{syn}, H_{meso}, H_{anti}, H_{anti}).

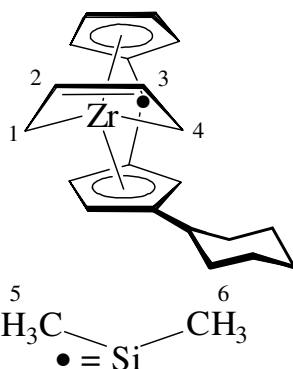


General

IR (KBr): $\tilde{\nu} = 2910$ (s), 2853 (s), 1447 (s), 1408 (w), 1369 (w), 1251 (vs), 1178 (m), 1099 (m), 1047 (s), 955 (w), 922 (w), 817 (vs), 731 (m) cm⁻¹.

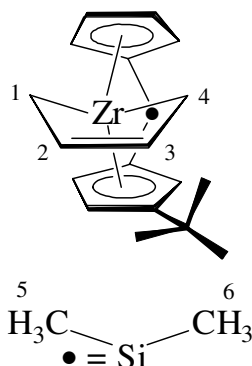
(*s-cis-17c*) Main *s-cis* isomer

GCOSY (599.9 MHz / 599.9 MHz, [D₈]-toluene, 228 K): $\delta^1\text{H} / \delta^1\text{H} = 6.02 / 5.60, 4.02; 5.60 / 4.02$ (each cyCp / cyCp), 5.28 / 4.92, 4.86; 4.92 / 4.86 (each Cp / Cp), 4.76 / 4.66, 3.44, -1.45 (3-H / 2-H, 4_{syn}-H, 4_{anti}-H), 4.66 / 3.35, -0.73 (2-H / 1_{syn}-H, 1_{anti}-H), 3.44 / -1.45 (4_{syn}-H / 4_{anti}-H), 3.35 / -0.73 (1_{syn}-H / 1_{anti}-H). **GHSQC** (150.8 MHz / 599.9 MHz, [D₈]-toluene, 228 K): $\delta^{13}\text{C} / \delta^1\text{H} = 112.3 / 4.76$ (C3 / 3-H), 110.4 / 4.86, 109.1 / 5.28, 102.0 / 4.92, 99.8 / 4.92 (each Cp / Cp), 109.5 / 4.66 (C2 / 2-H), 105.2 / 4.02, 102.8 / 6.02, 96.3 / 5.60 (each cyCp / cyCp), 60.8 / 3.21 (cy-CH / cy-CH), 54.1 / 3.44, -1.45 (C4 / 4_{syn}-H, 4_{anti}-H), 50.1 / 3.35, -0.73 (C1 / 1_{syn}-H, 1_{anti}-H), 38.2, 36.7, 32.5, 26.9, 26.6 / 1.80-1.00 (cy-CH₂ / cy-CH₂), -3.2 / 0.48 (C6 / 6-H), -6.7 / 0.30 (C5 / 5-H). **GHMBC** (150.8 MHz / 599.9 MHz, [D₈]-toluene, 228 K): $\delta^{13}\text{C} / \delta^1\text{H} = 143.4 / 6.02, 5.60, 4.02$ (quart. cyCp / each cyCp), 101.4 / 6.02, 5.60, 4.02 (quart. cyCp-CSi / each cyCp), 95.4 / 5.28, 4.92, 4.86 (quart. Cp-CSi / each Cp), 101.4, 95.4, -3.2 / 0.48 (quart. cyCp-CSi, quart. Cp-CSi, C6 / 6-H), 101.4, 95.4, -6.7 / 0.30 (quart. cyCp-CSi, quart. Cp-CSi, C5 / 5-H). **1D-TOCSY** (599.9 MHz, [D₈]-toluene, 228 K): $\delta_{\text{irr}} / \delta_{\text{res}} = 4.76 / 4.66, 3.44, 3.35, -0.73, -1.45$ (3-H / 2-H, 4_{syn}-H, 1_{syn}-H, 1_{anti}-H, 4_{anti}-H); 6.02 / 5.60, 4.02 (cyCp); 5.28 / 4.92, 4.86 (Cp).

**(*s-cis-17'c*)** Second *s-cis* isomer

GCOSY (599.9 MHz / 599.9 MHz, [D₈]-toluene, 253 K): $\delta^1\text{H} / \delta^1\text{H} = 6.07 / 5.93, 5.69, 4.17; 5.69 / 4.17$ (each Cp / Cp), 5.53 / 5.16, 4.08, 5.16 / 4.08 (each cyCp / cyCp), 4.83 / 4.70, 3.46, -0.88 (3-H / 2-H, 4_{syn}-H, 4_{anti}-H), 4.70 / 3.22, -0.77 (2-H / 1_{syn}-H, 1_{anti}-H), 3.46 / -0.88 (4_{syn}-H / 4_{anti}-H), 3.22 / -0.77 (1_{syn}-H / 1_{anti}-H). **GHSQC** (150.8 MHz / 599.9 MHz, [D₈]-toluene, 253 K): $\delta^{13}\text{C} / \delta^1\text{H} = 118.6 / 5.9, 104.9 / 6.07, 104.5 / 4.17, 99.1 / 5.69$ (each Cp / Cp), 112.1 / 4.83 (C3 / 3-H), 111.6 / 4.70 (C2 / 2-H), 108.6 / 4.08, 95.5 / 5.53, 94.1 / 5.16 (each cyCp / cyCp),

61.1 / 2.61 (cy-CH / cy-CH), 52.3 / 3.4, -0.88 (C4 / 4_{syn}-H , 4_{anti}-H), 50.7 / 3.22, -0.77 (C1 / 1_{syn}-H , 1_{anti}-H), 37.7, 32.1, 26.7, 26.5, 26.4 / 1.80-1.00 (cy-CH₂ / cy-CH₂), -3.2 / 0.49 (C6 / 6-H), -6.8 / 0.29 (C5 / 5-H). **GHMBC** (150.8 MHz / 599.9 MHz, [D₈]-toluene, 253 K): $\delta^{13}\text{C}$ / $\delta^1\text{H}$ = 137.6 / 5.53, 5.16, 4.08 (quart. cyCp-C / each cyCp), 99.7 / 5.53, 5.16, 4.08 (quart. cyCp-CSi / each cyCp), 94.5 / 6.07, 5.93, 5.69, 4.17 (quart. Cp-CSi / each Cp), 99.7, 94.5, -3.0 / 0.49 (quart. cyCp-CSi, quart. Cp-CSi, C6 / 6-H), 99.7, 94.5, -6.8 / 0.29 (quart. cyCp-CSi, quart. Cp-CSi, C5 / 5-H). **1D-TOCSY** (599.9 MHz, [D₈]-toluene, 253 K): δ_{irr} / δ_{res} = 4.83 / 4.70, 3.46, 3.22, -0.77, -0.88 (3-H / 2-H, 4_{syn}-H , 1_{syn}-H , 1_{anti}-H , 4_{anti}-H); 5.53 / 5.16, 4.08 (cyCp); 6.07 / 5.93, 5.69, 4.17 (Cp).



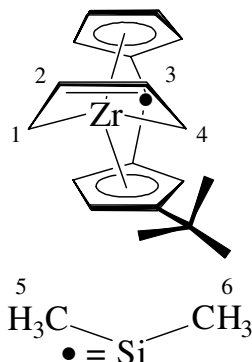
General

IR (KBr): $\tilde{\nu}$ = 2958 (vs), 2873 (vs), 1493 (m), 1467 (s), 1408 (s), 1369 (s), 1257 (vs), 1178 (vs), 1086 (vs), 1047 (vs), 942 (m), 923 (s), 810 (vs) cm^{-1} .

(*s-cis*-17e) Main *s-cis* isomer

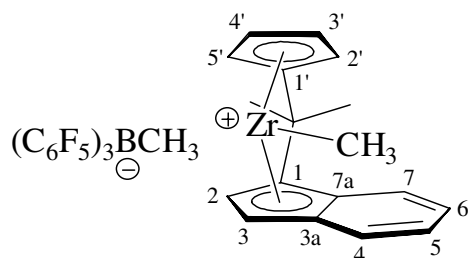
GCOSY (599.9 MHz / 599.9 MHz, [D₈]-toluene, 253 K): $\delta^1\text{H}$ / $\delta^1\text{H}$ = 5.99 / 5.65, 4.41; 5.65 / 4.41 (each tBuCp / tBuCp), 5.31 / 4.99, 4.89, 4.81; 4.99 / 4.89, 4.81 (each Cp / Cp), 4.73 / 4.62, 3.27, -0.86 (3-H / 2-H, 4_{syn}-H , 4_{anti}-H), 4.62 / 3.42, -0.72 (2-H / 1_{syn}-H , 1_{anti}-H), 3.42 / -0.72 (1_{syn}-H / 1_{anti}-H), 3.27 / -0.86 (4_{syn}-H / 4_{anti}-H). **GHSQC** (150.8 MHz / 599.9 MHz, [D₈]-toluene, 253 K): $\delta^{13}\text{C}$ / $\delta^1\text{H}$ = 112.1 / 4.73 (C3 / 3-H), 110.9 / 4.89, 108.9 / 5.31, 101.7 / 4.99, 99.1 / 4.81 (each Cp / Cp), 110.1 / 4.62 (C2 / 2-H), 103.9 / 5.99, 103.3 / 4.41, 97.3 / 5.65 (each tBuCp / tBuCp), 51.6 / 3.27, -0.86 (C4 / 4_{syn}-H , 4_{anti}-H), 51.4 / 3.42, -0.72 (C1 / 1_{syn}-H , 1_{anti}-H), 32.1 / 1.09 (tBu-CH₃ / tBu-CH₃), -3.1 / 0.44 (C6 / 6-H), -6.6 / 0.29 (C5 / 5-H). **GHMBC** (150.8 MHz / 599.9 MHz, [D₈]-toluene, 253 K): $\delta^{13}\text{C}$ / $\delta^1\text{H}$ = 148.0 / 5.99, 5.65,

4.41 (quart. tBuCp / each tBuCp), 101.1 / 5.99, 5.65, 4.41 (quart. tBuCp-CSi / each tBuCp), 95.3 / 5.31, 4.99, 4.89, 4.81 (quart. Cp-CSi / each Cp), 101.1, 95.3, -3.1 / 0.44 (quart. tBuCp-CSi, quart. Cp-CSi, C6 / 6-H), 101.1, 95.3, -6.6 / 0.29 (quart. tBuCp-CSi, quart. Cp-CSi, C5 / 5-H). **1D-TOCSY** (599.9 MHz, [D₈]-toluene, 253 K): $\delta_{\text{irr}} / \delta_{\text{res}} = 4.73 / 4.62, 3.42, 3.27, -0.72, -0.86$ (3-H / 2-H, 1_{syn}-H, 4_{syn}-H, 1_{anti}-H, 4_{anti}-H); 5.99 / 5.65, 4.41 (tBuCp); 5.31 / 4.99, 4.89, 4.81 (Cp).



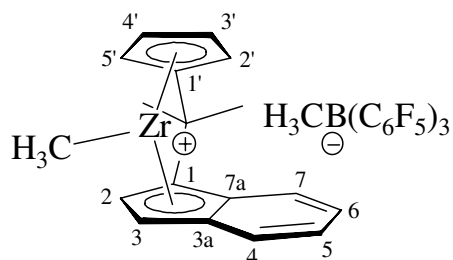
(*s-cis*-17e) Second *s-cis* isomer

GCOSY (599.9 MHz / 599.9 MHz, [D₈]-toluene, 253 K): $\delta^1\text{H} / \delta^1\text{H} = 6.19 / 6.10, 5.72, 4.00; 6.10 / 5.72, 4.00; 5.72 / 4.00$ (each Cp / Cp), 5.32 / 4.90, 4.68; 4.90 / 4.68 (each tBuCp / tBuCp), 5.14 / 4.67, 3.47, -0.96 (3-H / 2-H, 4_{syn}-H, 4_{anti}-H), 4.67 / 3.25, -0.70 (2-H / 1_{syn}-H, 1_{anti}-H), 3.47 / -0.96 (4_{syn}-H / 4_{anti}-H), 3.25 / -0.70 (1_{syn}-H / 1_{anti}-H). **GHSQC** (150.8 MHz / 599.9 MHz, [D₈]-toluene, 253 K): $\delta^{13}\text{C} / \delta^1\text{H} = 117.6 / 6.19, 110.7 / 6.10, 102.8 / 4.00, 101.4 / 5.72$ (each Cp / Cp), 113.4 / 5.14 (C3 / 3-H), 109.1 / 4.67 (C2 / 2-H), 109.0 / 4.90, 106.1 / 5.32, 96.5 / 4.68 (each tBuCp / tBuCp), 52.1 / 3.47, -0.96 (C4 / 4_{syn}-H, 4_{anti}-H), 50.3 / 3.25, -0.70 (C1 / 1_{syn}-H, 1_{anti}-H), 31.4 / 0.96 (tBu-CH₃ / tBu-CH₃), -2.2 / 0.47 (C6 / 6-H), -6.9 / 0.28 (C5 / 5-H). **GHMBC** (150.8 MHz / 599.9 MHz, [D₈]-toluene, 253 K): $\delta^{13}\text{C} / \delta^1\text{H} = 135.2 / 5.32, 4.90, 4.68$ (quart. tBuCp / each tBuCp), 99.9 / 5.32, 4.90, 4.68 (quart. tBuCp-CSi / each tBuCp), 98.8 / 6.19, 6.10, 5.72, 4.00 (quart. Cp-CSi / each Cp), 99.9, 98.8, -2.2 / 0.47 (quart. tBuCp-CSi, quart. Cp-CSi, C6 / 6-H), 99.9, 98.8, -6.9 / 0.28 (quart. tBuCp-CSi, quart. Cp-CSi, C5 / 5-H). **1D-TOCSY** (599.9 MHz, [D₈]-toluene, 253 K): $\delta_{\text{irr}} / \delta_{\text{res}} = 5.14 / 4.67, 3.47, 3.25, -0.70, -0.96$ (3-H / 2-H, 4_{syn}-H, 1_{syn}-H, 1_{anti}-H, 4_{anti}-H); 5.32 / 4.90, 4.68 (tBuCp); 6.19 / 6.10, 5.72, 4.00 (Cp).



Main isomer (*anti*-betaine)

GCOSY (599.9 MHz / 599.9 MHz, [D₂]-dichloromethane, 253 K): $\delta^1\text{H} / \delta^1\text{H} = 7.66 / 7.47$ (4-H / 5-H), 7.47 / 7.10 (5-H / 6-H), 7.10 / 7.52 (6-H / 7-H), 6.52 / 6.27 (3-H / 2-H), 6.85 / 6.17 (5'-H / 4'-H), 6.17 / 5.82 (4'-H / 3'-H), 5.81 / 5.52 (3'-H / 2'-H). **GHSQC** (150.8 MHz / 599.9 MHz, [D₂]-dichloromethane, 253 K): $\delta^{13}\text{C} / \delta^1\text{H} = 127.5 / 7.47$ (C5 / 5-H), 127.0 / 7.10 (C-6 / 6-H), 126.4 / 7.66 (C4 / 4-H), 126.1 / 7.52 (C7 / 7-H), 119.8 / 6.85 (C5' / 5'-H), 115.3 / 6.17 (C4' / 4'-H), 113.2 / 6.27 (C2 / 2-H), 108.6 / 5.52 (C2' / 2'-H), 105.5 / 6.52 (C3 / 3-H), 104.2 / 5.81 (C3' / 3'-H), 42.7 / -0.75 (Zr-CH₃ / Zr-CH₃), 25.8 / 1.89 (C(CH₃)₂ / C(CH₃)₂-anti), 24.6 / 1.99 (C(CH₃)₂ / C(CH₃)₂-syn).

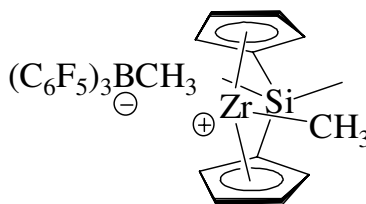


Minor isomer (*syn*-betaine)

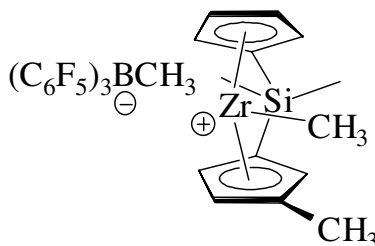
GCOSY (599.9 MHz / 599.9 MHz, [D₂]-dichloromethane, 253 K): $\delta^1\text{H} / \delta^1\text{H} = 7.62 / 6.48$ (4-H / 5-H), 6.48 / 6.73 (5-H / 6-H), 6.73 / 7.62 (6-H / 7-H), 5.80 / 7.32 (3-H / 2-H), 5.43 / 5.80, 5.80 / 5.87, 5.87 / 6.81 (each Cp' / Cp'). **GHSQC** (150.8 MHz / 599.9 MHz, [D₂]-dichloromethane, 253 K): $\delta^{13}\text{C} / \delta^1\text{H} = 126.8 / 6.73$, 125.7 / 6.48 (C6 / 6-H, C5 / 5-H), 124.8 / 7.62, 121.7 / 7.62 (C4 / 4-H, C7 / 7-H), 121.0 / 6.81 (Cp' / Cp'), 114.9 / 5.80 (C3 / 3-H), 113.4 / 5.80 (Cp' / Cp'), 112.3 / 7.32 (C2 / 2-H), 108.5 / 5.43, 104.0 / 5.87 (each Cp' / Cp'), 44.7 / 0.66 (Zr-CH₃ / Zr-CH₃), 25.9 / 1.78 (C(CH₃)₂-anti / C(CH₃)₂-anti), 24.8 / 2.07 (C(CH₃)₂-syn / C(CH₃)₂-syn).

Anion

$^1\text{H-NMR}$ (599.9 MHz, $[\text{D}_2]$ -dichloromethane, 253 K): $\delta = 0.61$ (broad s, 3H, $(\text{CH}_3)\text{B}(\text{C}_6\text{F}_5)_3$).
 $^{13}\text{C}\{^1\text{H}\}$ -NMR (150.8 MHz, $[\text{D}_2]$ -dichloromethane, 253 K): $\delta = 147.5$ (dm, $^1J_{\text{CF}} = 233$ Hz, o- $\text{B}(\text{C}_6\text{F}_5)_3$), 138.5 (dm, $^1J_{\text{CF}} = 256$ Hz, p- $\text{B}(\text{C}_6\text{F}_5)_3$), 136.7 (dm, $^1J_{\text{CF}} = 251$ Hz, m- $\text{B}(\text{C}_6\text{F}_5)_3$), 129.2 (broad, ipso- $\text{B}(\text{C}_6\text{F}_5)_3$). (Me-[B] was not observed).
 $^{19}\text{F-NMR}$ (563.7 MHz, $[\text{D}_2]$ -dichloromethane, 253 K): $\delta = -133.9$ (broad s, 6F, o- $\text{B}(\text{C}_6\text{F}_5)_3$), -160.0 (broad s, 3F, p- $\text{B}(\text{C}_6\text{F}_5)_3$), -164.8 (broad s, 6F, m- $\text{B}(\text{C}_6\text{F}_5)_3$).

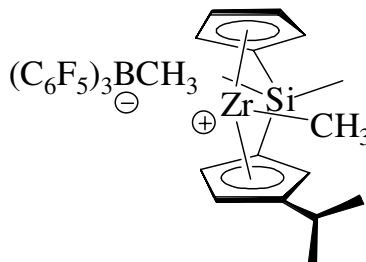


$^1\text{H-NMR}$ (599.9 MHz, $[\text{D}_6]$ -benzene, 298 K): $\delta = 6.34, 6.23, 5.28, 4.88$ (each m, each 2H, Cp), 0.46 (br, 3H, $(\text{H}_3\text{C})\text{B}(\text{C}_6\text{F}_5)_3$), 0.31 (s, 3H, Zr- CH_3), $-0.02, -0.20$ (each s, each 3H, $\text{Si}(\text{CH}_3)_2$).

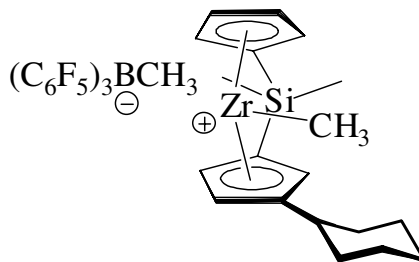


(9b) GCOSY (599.9 MHz / 599.9 MHz, $[\text{D}_6]$ -benzene, 298 K): $\delta^1\text{H} / \delta^1\text{H} = 6.44 / 6.25, 4.80; 6.25 / 5.37, 5.37 / 4.80$ (each Cp / Cp), $6.00 / 5.31, 4.57; 5.31 / 4.57$ (each MeCp / MeCp).
GHSQC (150.8 MHz / 599.9 MHz, $[\text{D}_6]$ -benzene, 298 K): $\delta^{13}\text{C} / \delta^1\text{H} = 124.8 / 6.44, 121.9 / 6.25, 117.6 / 4.80, 111.5 / 5.37$ (each Cp / Cp), $122.3 / 6.00, 118.2 / 4.57, 112.4 / 5.31$ (each MeCp / MeCp), $42.1 / 0.23$ (Zr- CH_3 / Zr- CH_3), $14.3 / 1.85$ (MeCp- CH_3 / MeCp- CH_3), $-5.5 / 0.02, -6.6 / 0.18$ (each $\text{Si}(\text{CH}_3)_2$ / $\text{Si}(\text{CH}_3)_2$).
 $^{19}\text{F-NMR}$ (563.7 MHz, $[\text{D}_6]$ -benzene, 298 K): δ

= -130.1 (broad, 6F, o-B(C₆F₅)₃), -161.6 (broad, 3F, p-B(C₆F₅)₃), -164.0 (broad, 6F, m-B(C₆F₅)₃). ¹¹B{¹H}-NMR (64.2 MHz, [D₆]-benzene, 298 K): δ = -14.2.

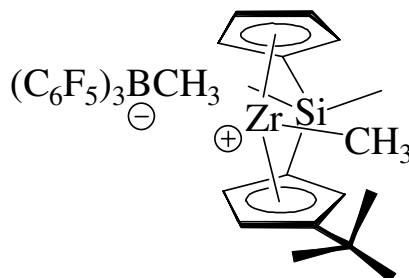


(**9d**) **GCOSY** (599.9 MHz / 599.9 MHz, [D₆]-benzene, 298 K): δ¹H / δ¹H = 6.43 / 6.30, 4.82; 6.30 / 5.36, 5.36 / 4.82 (each Cp / Cp), 6.23 / 5.38, 4.78; 5.38 / 4.78 (each iPrCp / iPrCp), 2.66 / 0.90, 0.88 (iPr-CH / iPr-CH₃). **GHSQC** (150.8 MHz / 599.9 MHz, [D₆]-benzene, 298 K): δ¹³C / δ¹H = 124.9 / 6.43, 122.2 / 6.30, 117.6 / 4.82, 111.1 / 5.36 (each Cp / Cp), 119.3 / 6.23, 115.9 / 4.78, 111.4 / 5.38 (iPrCp / iPrCp), 42.1 / 0.29 (Zr-CH₃ / Zr-CH₃), 28.5 / 2.66 (iPr-CH / iPr-CH), 24.8 / 0.90, 20.5 / 0.88 (each iPr-CH₃ / iPr-CH₃), -5.8 / 0.02, -6.8 / 0.21 (each Si(CH₃)₂ / Si(CH₃)₂). ¹⁹F-NMR (563.7 MHz, [D₆]-benzene, 298 K): δ = -130.6 (broad, 6F, o-B(C₆F₅)₃), -161.9 (broad, 3F, p-B(C₆F₅)₃), -164.9 (broad, 6F, m-B(C₆F₅)₃). ¹¹B{¹H}-NMR (64.2 MHz, [D₆]-benzene, 298 K): δ = -14.1.

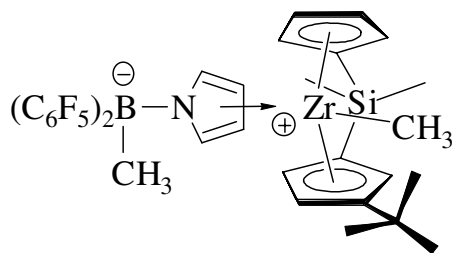


(**9c**) **GCOSY** (599.9 MHz / 599.9 MHz, [D₆]-benzene, 298 K): δ¹H / δ¹H = 6.42 / 6.34, 4.90; 6.40 / 5.33, 5.33 / 4.90 (each Cp / Cp), 6.30 / 5.40, 4.84; 5.40 / 5.33 (each cyCp / cyCp). (Die Kreuzsignale der cyclohexylgruppe wurden nicht gelistet.) **GHSQC** (150.8 MHz / 599.9 MHz, [D₆]-benzene, 298 K): δ¹³C / δ¹H = 124.2 / 6.42, 122.6 / 6.34, 118.0 / 4.90, 110.8 / 5.33 (each Cp / Cp), 119.8 / 6.30, 116.4 / 4.84, 111.0 / 5.40 (each cyCp / cyCp), 40.8 / 0.32 (Zr-CH₃), 38.2 / 2.45 (cy-CH / cy-CH), 36.0 / 1.68, 0.98; 31.6 / 1.57, 1.13; 26.5 / 1.54, 1.21; 26.0 / 1.66, 1.18; 25.8 / 1.48, 0.95 (each cy-CH₂ / cy-CH₂), -5.6 / 0.04, -6.9 / -0.19 (each Si(CH₃)₂ /

Si(CH₃)₂). ¹⁹F-NMR (563.7 MHz, [D₆]-benzene, 298 K): δ = -129.7 (broad, 6F, o-B(C₆F₅)₃), -161.0 (broad, 3F, p-B(C₆F₅)₃), -163.9 (broad, 6F, m-B(C₆F₅)₃). ¹¹B{¹H}-NMR (64.2 MHz, [D₆]-benzene, 298 K): δ = -14.3.



(**9e**) GCOSY (599.9 MHz / 599.9 MHz, [D₆]-benzene, 298 K): δ¹H / δ¹H = 6.40 / 5.37, 5.27; 5.37 / 5.27 (each tBuCp / tBuCp), 6.33 / 6.29, 5.20; 6.29 / 5.07, 5.27 / 5.07 (each Cp / Cp). GHSQC (150.8 MHz / 599.9 MHz, [D₆]-benzene, 298 K): δ¹³C / δ¹H = 123.3 / 6.33, 123.2 / 6.29, 119.7 / 5.07, 109.7 / 5.20 (each Cp / Cp), 121.4 / 6.40, 115.9 / 5.27, 111.1 / 5.37 (each tBuCp / tBuCp), 42.1 / 0.46 (Zr-CH₃ / Zr-CH₃), 30.5 / 0.98 (tBu-CH₃ / tBu-CH₃), -4.9 / 0.03, -7.4 / -0.24 (each Si(CH₃)₂ / Si(CH₃)₂). ¹⁹F-NMR (563.7 MHz, [D₆]-benzene, 298 K): δ = -130.4 (broad, 6F, o-B(C₆F₅)₃), -161.5 (broad, 3F, p-B(C₆F₅)₃), -164.2 (broad, 6F, m-B(C₆F₅)₃). ¹¹B{¹H}-NMR (64.2 MHz, [D₆]-benzene, 298 K): δ = -14.5.

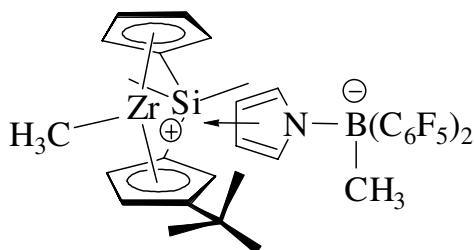


General

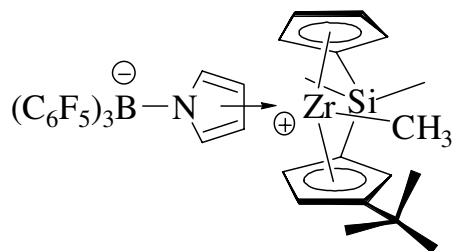
¹⁹F-NMR (563.7 MHz, [D₆]-benzene, 298 K): δ = -132.0 (m, 6F, o-B(C₆F₅)₃), -159.2 (m, 3F, p-B(C₆F₅)₃), -164.4 (m, 6F, m-B(C₆F₅)₃). ¹¹B{¹H}-NMR (64.2 MHz, [D₆]-benzene, 298 K): δ = -7.4.

(anti-11e) Main isomer

GCOSY (599.9 MHz / 599.9 MHz, [D₆]-benzene, 298 K): $\delta^1\text{H} / \delta^1\text{H} = 7.40 / 7.32$ (α -pyrrole / α -pyrrole), 7.40 / 5.91, 5.44; 7.32 / 5.91, 5.44 (each α -pyrrole / β -pyrrole), 5.91 / 5.44 (β -pyrrole / β -pyrrole), 6.29 / 4.95, 4.77; 4.95 / 4.77 (each Cp / Cp), 5.97 / 5.10, 5.03; 5.10 / 5.03 (each tBuCp / tBuCp). **GHSQC** (150.8 MHz / 599.9 MHz, [D₆]-benzene, 298 K): $\delta^{13}\text{C} / \delta^1\text{H} = 140.3 / 7.40$, 136.3 / 7.32 (each α -pyrrole / α -pyrrole), 127.1 / 4.95, 124.1 / 6.29, 114.9 / 4.77, 109.0 / 4.95 (each Cp / Cp), 121.1 / 5.97, 112.6 / 5.03, 109.1 / 5.10 (each tBuCp / tBuCp), 103.8 / 5.91, 97.5 / 5.44 (β -pyrrole / β -pyrrole), 38.6 / 0.13 (Zr-CH₃ / Zr-CH₃), 30.9 / 1.13 (tBu-CH₃ / tBu-CH₃), -5.3 / 0.10, -7.0 / -0.15 (each Si(CH₃)₂ / Si(CH₃)₂). **¹D-TOCSY** (599.9 MHz, [D₆]-benzene, 298 K): $\delta_{\text{irr}} / \delta_{\text{res}} = 7.40 / 7.32$, 5.91, 5.44 (α -pyrrole / α -pyrrole, β -pyrrole, β -pyrrole); 6.29 / 4.95, 4.77 (Cp); 5.97 / 5.10, 5.03 (tBuCp).

**(syn-11e)** Second isomer

GCOSY (599.9 MHz / 599.9 MHz, [D₆]-benzene, 298 K): $\delta^1\text{H} / \delta^1\text{H} = 7.48 / 7.46$ (α -pyrrole / α -pyrrole), 7.48 / 6.03, 5.92; 7.46 / 6.03, 5.92 (each α -pyrrole / β -pyrrole), 6.03 / 5.92 (β -pyrrole / β -pyrrole), 5.97 / 5.13, 4.98, 4.85; 5.13 / 4.98, 4.85; 4.95 / 4.85 (each Cp / Cp), 5.94 / 5.38, 5.07; 5.38 / 5.07 (each tBuCp / tBuCp). **GHSQC** (150.8 MHz / 599.9 MHz, [D₆]-benzene, 298 K): $\delta^{13}\text{C} / \delta^1\text{H} = 140.3 / 7.48$, 136.3 / 7.46 (each α -pyrrole / α -pyrrole), 125.8 / 5.97, 121.1 / 4.98, 118.1 / 4.85, 112.5 / 5.13 (each Cp / Cp), 120.8 / 5.94, 112.7 / 5.07, 109.8 / 5.38 (each tBuCp / tBuCp), 101.8 / 6.03, 98.3 / 5.92 (β -pyrrole / β -pyrrole), 34.0 / 0.31 (Zr-CH₃ / Zr-CH₃), 29.9 / 0.95 (tBu-CH₃ / tBu-CH₃), -5.9 / 0.23, -6.1 / 0.16 (each Si(CH₃)₂ / Si(CH₃)₂). **¹D-TOCSY** (599.9 MHz, [D₆]-benzene, 298 K): $\delta_{\text{irr}} / \delta_{\text{res}} = 7.48 / 7.46$, 6.03, 5.92 (α -pyrrole / α -pyrrole, β -pyrrole, β -pyrrole); 5.97 / 5.13, 4.98, 4.85 (Cp); 5.94 / 5.38, 5.07 (tBuCp).

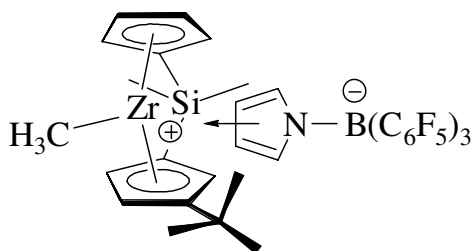


General

^{19}F -NMR (563.7 MHz, $[\text{D}_6]$ -benzene, 298 K): δ = -130.1 (m, 6F, o- $\text{B}(\text{C}_6\text{F}_5)_3$), -157.4 (m, 3F, p- $\text{B}(\text{C}_6\text{F}_5)_3$), -162.7 (m, 6F, m- $\text{B}(\text{C}_6\text{F}_5)_3$). **$^{11}\text{B}\{^1\text{H}\}$ -NMR** (64.2 MHz, $[\text{D}_6]$ -benzene, 298 K): δ = -8.3.

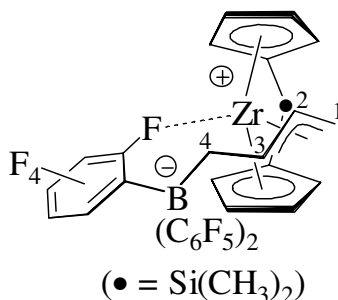
(*anti*-13e) Main isomer

GCOSY (599.9 MHz / 599.9 MHz, $[\text{D}_6]$ -benzene, 298 K): $\delta^1\text{H} / \delta^1\text{H}$ = 7.21 / 7.18 (α -pyrrole / α -pyrrole), 7.21 / 5.83, 5.35; 7.18 / 5.83, 5.35 (each α -pyrrole / β -pyrrole), 6.55 / 5.46, 5.28, 4.28, 5.46 / 5.28, 4.86; 5.28 / 4.86 (each Cp / Cp), 6.12 / 5.31, 5.05; 5.31 / 5.05 (each tBuCp / tBuCp), 5.83 / 5.35 (β -pyrrole / β -pyrrole). **GHSQC** (150.8 MHz / 599.9 MHz, $[\text{D}_6]$ -benzene, 298 K): $\delta^{13}\text{C} / \delta^1\text{H}$ = 139.1 / 7.21, 136.9 / 7.18 (each α -pyrrole / α -pyrrole), 125.9 / 6.55, 124.3 / 5.46, 115.8 / 4.82, 110.7 / 5.28 (each Cp / Cp), 120.5 / 6.12, 112.3 / 5.05, 111.4 / 5.31 (each tBuCp / tBuCp), 105.5 / 5.83, 98.9 / 5.35 (β -pyrrole / β -pyrrole), 41.3 / 0.23 (Zr- CH_3 / Zr- CH_3), 30.7 / 1.10 (tBu- CH_3 / tBu- CH_3), -5.6 / 0.21, -6.8 / -0.10 (each $\text{Si}(\text{CH}_3)_2$ / $\text{Si}(\text{CH}_3)_2$). **^1D -TOCSY** (599.9 MHz, $[\text{D}_6]$ -benzene, 298 K): $\delta_{\text{irr}} / \delta_{\text{res}}$ = 7.21 / 7.18, 5.83, 5.35 (α -pyrrole / α -pyrrole, β -pyrrole, β -pyrrole); 6.55 / 5.46, 5.28, 4.86 (Cp); 6.12 / 5.31, 5.05 (tBuCp).



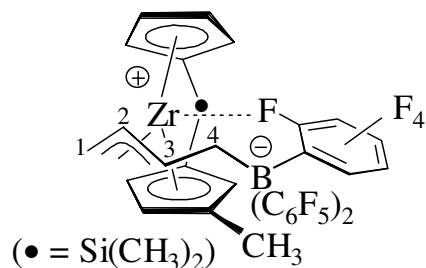
(*syn*-13e) Second isomer

2-H), 5.54 / 5.09, 4.93, 4.78 (Cp / Cp), 5.09 / 4.93, 4.78, (Cp / Cp), 4.86 / 4.52, -0.57, -0.74 (3-H / 2-H, 4'-H, 4-H), 4.52 / 0.94 (2-H / 1_{syn}-H, 1_{anti}-H), -0.57 / -0.74 (4'-H / 4-H). **GHSQC** (150.8 MHz / 599.9 MHz, [D₈]-toluene, 298 K): $\delta^{13}\text{C} / \delta^1\text{H} = 135.2 / 4.52$ (C2 / 2-H), 125.9 / 6.67 (Ind-C7 / Ind-7-H), 125.7 / 6.28 (Ind-C4 / Ind-4-H), 125.2 / 6.32 (Ind-C6 / Ind-6-H), 124.3 / 6.40 (Ind-C5 / Ind-5-H), 116.1 / 5.09, 110.8 / 4.78 (each Cp / Cp), 109.9 / 4.86 (C3 / 3-H), 109.8 / 5.49 (Ind-C2 / Ind-2-H), 100.4 / 5.77 (Ind-C3 / Ind-3-H), 95.2 / 5.54, 93.7 / 4.93



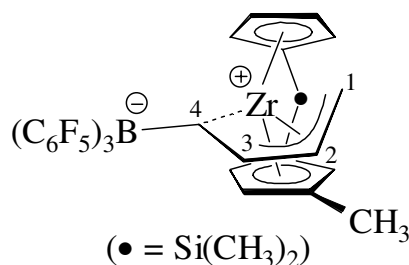
(each Cp / Cp), 62.8 / 0.94 (C1 / 1'-H, 1-H), 25.5 / 1.17, 24.5 / 1.32 (each C(CH₃)₂ / C(CH₃)₂), 22 / -0.57, -0.74 (C4 / 4'-H, 4-H).

(18a): ¹H-NMR (599.9 MHz, [D₈]-toluene, 298 K): $\delta = 6.11, 6.00$ (each m, 1H, Cp), 5.92 (m, 2H, Cp und 2-H), 5.78, 5.55, 5.50 (each m, each 1H, Cp), 5.43 (m, 1H, 3-H), 4.40 (m, 2H, Cp), 2.63 (br d, 1H, ²J_{HH} = 18.2 Hz, 4'-H), 2.31 (br dd, 1H, ²J_{HH} = 18.2 Hz, ³J_{HH} = 6.0 Hz, 4-H), 1.86 (dd, 1H, ³J_{HH} = 17.9 Hz, ²J_{HH} = 5.0 Hz, 1_{anti}-H), 1.53 (dd, 1H, ³J_{HH} = 8.3 Hz, ²J_{HH} = 5.0 Hz, 1_{syn}-H), 0.24, -0.17 (each s, each 3H, Si(CH₃)₂). **¹³C{¹H}-NMR** (150.8 MHz, [D₈]-toluene, 298 K): $\delta = 149.5$ (dm, ¹J_{CF} = 230 Hz, o-B(C₆F₅)₃), 138.9 (dm, ¹J_{CF} = 250 Hz, p-B(C₆F₅)₃), 137.3 (dm, ¹J_{CF} = 250 Hz, m-B(C₆F₅)₃), 130.4 (br, C2), 125.8 (br, ipso-B(C₆F₅)₃), 125.1, 123.7 (each Cp), 123.1 (C3), 121.9, 121.2, 109.9, 107.2 (2x), 106.6 (each Cp), 106.1, 102.7 (Cp-CSi), 52.0 (C1), 28.3 (br, C4), -5.7, -7.1 (each Si(CH₃)₂). **GCOSY** (599.9 MHz / 599.9 MHz, [D₈]-toluene, 298 K): $\delta^1\text{H} / \delta^1\text{H} = 6.11 / 5.92, 5.55, 4.40; 6.00 / 5.78, 5.55, 4.40; 5.92 / 5.50, 4.40$ (each Cp / Cp), 5.92 / 5.43, 1.86, 1.53 (2-H / 3-H, 1_{anti}-H, 1_{syn}-H), 5.78 / 5.50, 4.40; 5.55 / 4.40 (each Cp / Cp), 5.43 / 2.63, 2.31 (3-H / 4'-H, 4-H), 2.63 / 2.31 (4'-H / 4-H), 1.86 / 1.53 (1_{anti}-H / 1_{syn}-H). **GHSQC** (150.8 MHz / 599.9 MHz, [D₈]-toluene, 298 K): $\delta^{13}\text{C} / \delta^1\text{H} = 130.4 / 5.92$ (C2 / 2-H), 125.1 / 5.92, 123.7 / 6.00 (each Cp / Cp), 123.1 / 5.43 (C3 / 3-H), 121.9 / 6.11, 121.2 / 5.78, 109.9 / 4.40, 107.2 / 5.55, 106.6 / 4.40 (each Cp / Cp), 52.0 / 1.86, 1.53 (C1 / 1_{anti}-H, 1_{syn}-H), 28.3 / 2.63, 2.31 (C4 / 4'-H, 4-H), -5.7 / 0.24, -7.1 / -0.17 (each Si(CH₃)₂ / Si(CH₃)₂). **¹⁹F-NMR** (564.3 MHz, [D₈]-toluene, 298 K): $\delta = -165.0$



(E-18b) Second *E*-isomer

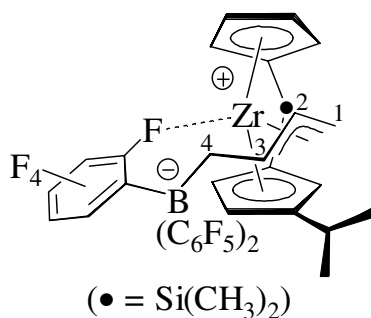
GCOSY (599.9 MHz / 599.9 MHz, [D₈]-toluene, 258 K): $\delta^1\text{H} / \delta^1\text{H} = 6.01 / 5.78, 5.46, 4.41;$
 $5.78 / 5.46, 4.41; 5.46 / 4.41$ (each Cp / Cp), $5.64 / 5.51, 3.89; 5.51 / 3.89$ (each MeCp /
 MeCp), $5.70 / 5.38, 1.67, 1.48$ (2-H / 3-H, $1_{\text{anti}}\text{-H}, 1_{\text{syn}}\text{-H}$), $5.38 / 2.51, 2.18$ (3-H / 4'-H, 4-H),
 $2.51 / 2.18$ (4'-H / 4-H), $1.67 / 1.48$ ($1_{\text{anti}}\text{-H} / 1_{\text{syn}}\text{-H}$). **GHSQC** (150.8 MHz / 599.9 MHz,
 [D₈]-toluene, 258 K): $\delta^{13}\text{C} / \delta^1\text{H} = 129.1 / 5.70$ (C2 / 2-H), $124.0 / 5.78, 121.9 / 6.01, 110.2 /$
 $4.41, 105.8 / 5.46$ (each Cp / Cp), $121.8 / 5.64, 109.1 / 3.89, 108.1 / 5.51$ (each MeCp /
 MeCp), $114.4 / 5.38$ (C3 / 3-H), $51.4 / 1.67, 1.48$ (C1 / $1_{\text{anti}}\text{-H}, 1_{\text{syn}}\text{-H}$), $13.3 / 1.72$ (MeCp-
 CH₃ / MeCp-CH₃), $-6.4 / 0.17, -7.5 / -0.23$ (each Si(CH₃)₂ / Si(CH₃)₂). **GHMBC** (150.8 MHz
 / 599.9 MHz, [D₈]-toluene, 258 K): $\delta^{13}\text{C} / \delta^1\text{H} = 136.5, 121.8, 105.8 / 1.72$ (quart. MeCp,
 MeCp, MeCp / MeCp-CH₃), $105.6, 101.9, -6.4 / 0.22$ (quart. MeCp-CSi, quart. Cp-CSi,
 Si(CH₃)₂ / Si(CH₃)₂), $105.6, 101.9 -7.5 / -0.23$ (quart. MeCp-CSi, quart. Cp-CSi, Si(CH₃)₂ /
 Si(CH₃)₂). **1D-TOCSY** (599.9 MHz, [D₈]-toluene, 258 K): $\delta_{\text{irr}} / \delta_{\text{res}} = 2.18 / 5.70, 5.38, 2.51,$
 $1.67, 1.48$ (4-H / 2-H, 3-H, 4'-H, $1_{\text{anti}}\text{-H}, 1_{\text{syn}}\text{-H}$); $5.64 / 5.51, 3.89$ (MeCp); $6.01 / 5.78, 5.46,$
 4.41 (Cp).



(Z-18b) *Z*-isomer

GCOSY (599.9 MHz / 599.9 MHz, [D₈]-toluene, 258 K): $\delta^1\text{H} / \delta^1\text{H} = 5.82 / 4.74, 4.55; 4.74 /$
 4.55 (each MeCp / MeCp), $5.38 / 5.29, 4.91, 4.23; 5.29 / 4.91, 4.23; 4.91 / 4.23$ (each Cp /

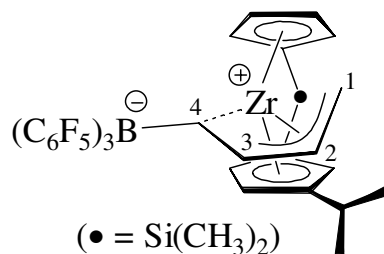
Cp), 5.16 / 4.49, 2.62, 0.27 (2-H / 3-H, $1_{\text{anti-H}}$, $1_{\text{syn-H}}$), 4.49 / -0.43, -1.83 (3-H / 4'-H, 4-H), 2.62 / 0.27 ($1_{\text{anti-H}}$ / $1_{\text{syn-H}}$), -0.43 / -1.83 (4'-H / 4-H). **GHSQC** (150.8 MHz / 599.9 MHz, [D₈]-toluene, 258 K): $\delta^{13}\text{C}$ / $\delta^1\text{H}$ = 131.4 / 5.16 (C2 / 2-H), 117.9 / 4.49 (C3 / 3-H), 117.6 / 4.55, 114.1 / 4.74, 103.2 / 5.82 (each MeCp / MeCp), 114.5 / 5.38, 113.2 / 4.91, 112.5 / 4.23, 109.2 / 5.29 (each Cp / Cp), 55.0 / 2.62, 0.27 (C1 / $1_{\text{anti-H}}$, $1_{\text{syn-H}}$), 14.5 / 1.53 (MeCp-CH₃ / MeCp-CH₃), -5.8 / 0.08, -8.1 / 0.11 (each Si(CH₃)₂ / Si(CH₃)₂). **GHMBC** (150.8 MHz / 599.9 MHz, [D₈]-toluene, 258 K): $\delta^{13}\text{C}$ / $\delta^1\text{H}$ = 136.6, 114.1, 103.2 / 1.53 (quart. MeCp, MeCp, MeCp / MeCp-CH₃), 101.5, 99.6, -5.8 / 0.11 (quart. MeCp-CSi, quart. Cp-CSi, Si(CH₃)₂ / Si(CH₃)₂), 101.5, 99.6 -8.1 / 0.08 (quart. MeCp-CSi, quart. Cp-CSi, Si(CH₃)₂ / Si(CH₃)₂). **1D-TOCSY** (599.9 MHz, [D₈]-toluene, 258 K): δ_{irr} / δ_{res} = 2.62 / 5.16, 4.49, 0.27, -0.43, -1.83 ($1_{\text{anti-H}}$ / 2-H, 3-H, $1_{\text{syn-H}}$, 4'-H, 4-H); 5.82 / 4.74, 4.55 (MeCp); 5.38 / 5.29, 4.91, 4.23 (Cp). **¹⁹F-NMR** (563.7 MHz, [D₈]-toluene, 268 K): δ = -136.7 (broad, 6F, o-B(C₆F₅)₃), -159.6 (broad, 3F, p-B(C₆F₅)₃), -164.1 (broad, 6F, m-B(C₆F₅)₃). **¹¹B{¹H}-NMR** (64.2 MHz, [D₆]-toluene, 268 K): δ = -14.0. **IR** (KBr): $\tilde{\nu}$ = 2983 (m), 2882 (w), 1644 (s), 1524 (vs), 1484 (vs), 1370 (m), 1290 (s), 1089 (vs), 975 (vs), 801 (s) cm⁻¹.



(E-18d) *E*-isomer

GCOSY (599.9 MHz / 599.9 MHz, [D₈]-toluene, 298 K): $\delta^1\text{H}$ / $\delta^1\text{H}$ = 6.04 / 5.82, 5.48, 4.54; 5.82 / 5.48, 5.48 / 4.54 (each Cp / Cp), 5.85 / 5.43, 4.57; 5.43 / 4.57 (each iPrCp / iPrCp), 5.77 / 5.48, 1.70, 1.60 (2-H / 3-H, $1_{\text{syn-H}}$, $1_{\text{anti-H}}$), 5.48 / 2.49, 2.22 (3-H / 4'-H, 4-H), 2.49 / 2.22 (4'-H / 4-H), 2.45 / 1.12, 0.97 (iPr-CH / iPr-CH₃), 1.70 / 1.60 ($1_{\text{syn-H}}$ / $1_{\text{anti-H}}$). **GHSQC** (150.8 MHz / 599.9 MHz, [D₈]-toluene, 298 K): $\delta^{13}\text{C}$ / $\delta^1\text{H}$ = 127.1 / 5.77 (C2 / 2-H), 123.9 / 5.82, 122.9 / 6.04, 110.5 / 4.54, 105.7 / 5.48 (Cp / Cp), 118.1 / 5.85, 107.8 / 4.57, 103.4 / 5.43 (iPrCp / iPrCp), 110.5 / 5.48 (C3 / 3-H), 51.3 / 1.70, 1.60 (C1 / $1_{\text{syn-H}}$, $1_{\text{anti-H}}$), 28.0 / 2.45 (iPr-CH / iPrCp-CH), 24.2 / 0.97, 22.1 / 1.12 (each iPr-CH₃ / iPr-CH₃), -5.4 / 0.22, -7.4 / -0.21

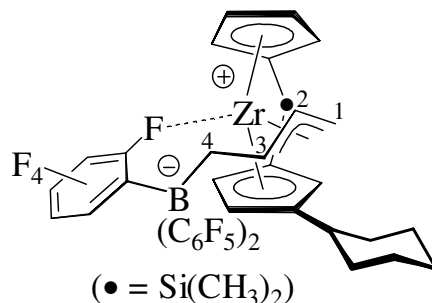
(each $\text{Si}(\text{CH}_3)_2 / \text{Si}(\text{CH}_3)_2$). **GHMBC** (150.8 MHz / 599.9 MHz, $[\text{D}_8]$ -toluene, 298 K): $\delta^{13}\text{C} / \delta^1\text{H} = 149.0, 24.2 / 0.97$ (quart. iPrCp, iPr-CH₃ / iPr-CH₃), 149.0, 22.1 / 1.12 (quart. iPrCp, iPr-CH₃ / iPr-CH₃), 105.1, 101.0, -5.4 / 0.22 (quart. iPrCp-CSi, quart. Cp-CSi, $\text{Si}(\text{CH}_3)_2 / \text{Si}(\text{CH}_3)_2$), 105.1, 101.0, -7.3 / -0.21 (quart. iPrCp-CSi, quart. Cp-CSi, $\text{Si}(\text{CH}_3)_2 / \text{Si}(\text{CH}_3)_2$). **1D-TOCSY** (599.9 MHz, $[\text{D}_8]$ -toluene, 298 K): $\delta_{\text{irr}} / \delta_{\text{res}} = 2.49 / 5.77, 5.48, 2.22, 1.70, 1.60$ (4'-H / 2-H, 3-H, 4-H, 1_{syn}-H, 1_{anti}-H); 5.85 / 5.43, 4.57 (iPrCp); 6.04 / 5.82, 5.48, 4.54 (Cp). **¹⁹F-NMR** (563.7 MHz, $[\text{D}_8]$ -toluene, 298 K): $\delta = -129.0$ (broad, 6F, o-B(C₆F₅)₃), -160.2 (broad, 3F, p-B(C₆F₅)₃), -164.3 (broad, 6F, m-B(C₆F₅)₃). **¹¹B{¹H}-NMR** (64.2 MHz, $[\text{D}_6]$ -toluene, 298 K): $\delta = -13.9$.



(Z-18d) Z-isomer

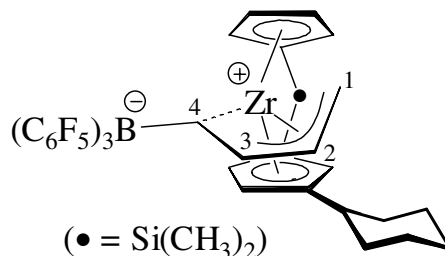
GCOSY (599.9 MHz / 599.9 MHz, $[\text{D}_8]$ -toluene, 298 K): $\delta^1\text{H} / \delta^1\text{H} = 6.10 / 5.80, 5.51, 4.16;$ 5.80 / 5.51, 4.16; 5.51 / 4.16 (each Cp / Cp), 5.99 / 5.51, 4.23; 5.51 / 4.23 (each iPrCp / iPrCp), 5.24 / 4.55, 2.71, 1.15 (2-H / 3-H, 1_{syn}-H, 1_{anti}-H), 4.55 / -0.30, -1.90 (3-H / 4'-H, 4-H), 2.71 / 1.15 (1_{syn}-H / 1_{anti}-H), 2.21 / 0.94, 2.21 / 0.73 (each iPr-CH / iPr-CH₃), -0.30 / -1.90 (4'-H / 4-H). **GHSQC** (150.8 MHz / 599.9 MHz, $[\text{D}_8]$ -toluene, 298 K): $\delta^{13}\text{C} / \delta^1\text{H} = 128.5 / 5.24$ (C2 / 2-H), 117.6 / 5.80, 113.6 / 6.10, 110.5 / 5.51, 105.4 / 4.16 (each Cp / Cp), 116.3 / 5.99, 113.5 / 5.51, 104.2 / 4.23 (each iPrCp / iPrCp), 110.1 / 4.55 (C3 / 3-H), 55.2 / 2.71, 1.15 (C1 / 1_{syn}-H, 1_{anti}-H), 29.6 / 2.21 (iPr-CH / iPrCp-CH), 22.8 / 0.94, 22.1 / 0.73 (each iPr-CH₃ / iPr-CH₃) -6.3 / 0.31, -6.5 / -0.08 (each $\text{Si}(\text{CH}_3)_2 / \text{Si}(\text{CH}_3)_2$). **GHMBC** (150.8 MHz / 599.9 MHz, $[\text{D}_8]$ -toluene, 298 K): $\delta^{13}\text{C} / \delta^1\text{H} = 149.4 / 0.94$ (quart. iPrCp / iPr-CH₃), 149.4 / 0.73 (quart. iPrCp / iPr-CH₃), 105.7, 103.9, -6.3 / 0.31 (quart. iPrCp-CSi, quart. Cp-CSi, $\text{Si}(\text{CH}_3)_2 / \text{Si}(\text{CH}_3)_2$), 105.7, 103.9, -6.5 / -0.08 (quart. iPrCp-CSi, quart. Cp-CSi, $\text{Si}(\text{CH}_3)_2 / \text{Si}(\text{CH}_3)_2$). **1D-TOCSY** (599.9 MHz, $[\text{D}_8]$ -toluene, 298 K): $\delta_{\text{irr}} / \delta_{\text{res}} = 4.55 / 5.24, 2.71, 1.15, -0.30, -1.90$ (3-H / 2-H, 1_{syn}-H, 1_{anti}-H, 4'-H, 4-H); 5.99 / 5.51, 4.23 (iPrCp); 6.10 / 5.80, 5.51, 4.16 (Cp). **¹⁹F-NMR** (563.7 MHz, $[\text{D}_8]$ -toluene, 298 K): $\delta = -134.7$ (broad, 6F, o-B(C₆F₅)₃), -159.8

(broad, 3F, p-B(C₆F₅)₃), -164.4 (broad, 6F, m-B(C₆F₅)₃). **¹¹B{¹H}-NMR** (64.2 MHz, [D₈]-toluene, 298 K): δ = -13.8. **IR** (KBr): $\tilde{\nu}$ = 2982 (m), 2926 (w), 1651 (vs), 1544 (vs), 1470 (vs), 1397 (s), 1270 (s), 1102 (vs), 982 (vs), 814 (s) cm⁻¹.

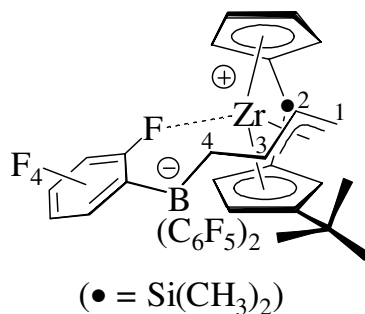


(E-18c) *E*-isomer

GCOSY (599.9 MHz / 599.9 MHz, [D₈]-toluene, 268 K): δ¹H / δ¹H = 6.04 / 5.79, 5.46, 4.46; 5.79 / 5.46, 4.46; 5.46 / 4.46 (each Cp / Cp), 5.82 / 5.43, 4.52; 5.43 / 4.52 (each cyCp / cyCp), 5.77 / 5.48, 1.67, 1.59 (2-H / 3-H, 1_{syn}-H, 1_{anti}-H), 5.48 / 2.54, 2.22 (3-H / 4'-H, 4-H), 2.54 / 2.22 (4'-H / 4-H), 1.67 / 1.59 (1_{syn}-H / 1_{anti}-H). Die Cross-Peaks für die cyclohexylgruppe können nicht eindeutig zugewiesen werden. **GHSQC** (150.8 MHz / 599.9 MHz, [D₈]-toluene, 268 K): δ¹³C / δ¹H = 131.3 / 5.77 (C2 / 2-H), 123.8 / 5.79, 121.3 / 6.04, 109.9 / 4.46, 102.8 / 5.46 (each Cp / Cp), 120.4 / 5.48 (C3 / 3-H), 118.0 / 5.82, 107.3 / 4.52, 105.5 / 5.43, (each cyCp / cyCp), 58.4 / 3.12 (cy-CH / cy-CH), 51.0 / 1.67, 1.59 (C1 / 1_{syn}-H, 1_{anti}-H), 32.1, 25.8, 25.2, 23.6 / 1.90-0.80 (cy-CH₂ / cy-CH₂), -3.5 / -0.19, -4.3 / 0.21 (each Si(CH₃)₂ / Si(CH₃)₂). **GHMBC** (150.8 MHz / 599.9 MHz, [D₈]-toluene, 268 K): δ¹³C / δ¹H = 102.4, 100.4, -4.3 / 0.21 (quart. cyCp-CSi, quart. Cp-CSi, Si(CH₃)₂ / Si(CH₃)₂), 102.4, 100.4, -3.5 / -0.19 (quart. cyCp-CSi, quart. Cp-CSi, Si(CH₃)₂ / Si(CH₃)₂). **1D-TOCSY** (599.9 MHz, [D₈]-toluene, 268 K): δ_{irr} / δ_{res} = 2.22 / 5.77, 5.48, 2.54, 1.67, 1.59 (4-H / 2-H, 3-H, 4'-H, 1_{syn}-H, 1_{anti}-H); 5.82 / 5.43, 4.52 (cyCp); 6.04 / 5.79, 5.46, 4.46 (Cp). **¹⁹F-NMR** (563.7 MHz, [D₈]-toluene, 268 K): δ = -129.3 (broad, 6F, o-B(C₆F₅)₃), -160.7 (broad, 3F, p-B(C₆F₅)₃), -164.8 (broad, 6F, m-B(C₆F₅)₃). **¹¹B{¹H}-NMR** (64.2 MHz, [D₈]-toluene, 268 K): δ = -14.3.

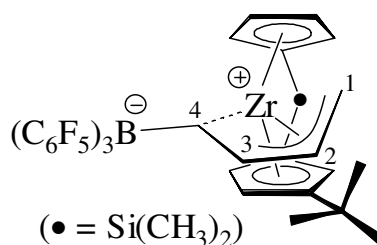
**(Z-18c)** Z-isomer

GCOSY (599.9 MHz / 599.9 MHz, [D₈]-toluene, 268 K): $\delta^1\text{H} / \delta^1\text{H} = 5.90 / 5.02, 4.95; 5.02 / 4.95$ (each cyCp / cyCp), $5.37 / 5.31, 4.95, 4.41; 5.31 / 4.95, 4.41; 4.95 / 4.41$ (each Cp / Cp), $5.22 / 5.06, 2.66, 0.44$ (2-H / 3-H, 1_{syn}-H , 1_{anti}-H), $5.06 / -0.36, -1.79$ (3-H / 4'-H, 4-H), $2.66 / 0.44$ ($1_{\text{syn}}\text{-H} / 1_{\text{anti}}\text{-H}$), $-0.36 / -1.79$ (4'-H / 4-H). **GHSQC** (150.8 MHz / 599.9 MHz, [D₈]-toluene, 268 K): $\delta^{13}\text{C} / \delta^1\text{H} = 127.2 / 5.22$ (C2 / 2-H), $121.2 / 4.95$ (Cp-CH / Cp-CH), $119.3 / 5.90$ (cyclohex.Cp-CH / cyclohex.Cp-CH), $115.3 / 5.37$ (Cp-CH / Cp-CH), $112.3 / 5.06$ (C3 / 3-H), $110.8 / 5.02$ (cyclohex.Cp-CH / cyclohex.Cp-CH), $109.0 / 4.95$ (cyclohex.Cp-CH / cyclohex.Cp-CH), $105.5 / 4.41$ (Cp-CH / Cp-CH), $103.9 / 5.31$ (Cp-CH / Cp-CH), $58.3 / 3.24$ (cyclohexyl-CH / cyclohexyl-CH), $55.2 / 2.66$ (C1 / 1_{syn}-H), $55.2 / 0.44$ (C1 / 1_{anti}-H), $33.1, 27.8, 27.6, 24.9, 23.6 / 1.90\text{-}0.80$ (cyclohexyl-CH₂ / cyclohexyl-CH₂), $-5.1 / 0.33, -6.3 / -0.03$ (each Si(CH₃)₂ / Si(CH₃)₂). **GHMBC** (150.8 MHz / 599.9 MHz, [D₈]-toluene, 268 K): $\delta^{13}\text{C} / \delta^1\text{H} = 102.7, 99.8, -5.1 / 0.33$ (quart. cyCp-CSi, quart. Cp-CSi, Si(CH₃)₂ / Si(CH₃)₂), $102.7, 99.8, -6.3 / -0.03$ (quart. cyCp-CSi, quart. Cp-CSi, Si(CH₃)₂ / Si(CH₃)₂). **1D-TOCSY** (599.9 MHz, [D₈]-toluene, 268 K): $\delta_{\text{irr}} / \delta_{\text{res}} = 2.66 / 5.22, 5.06, 0.44, -0.36, -1.79$ ($1_{\text{syn}}\text{-H} / 2\text{-H}, 3\text{-H}, 1_{\text{anti}}\text{-H}, 4'\text{-H}, 4\text{-H}$); $5.90 / 5.02, 4.95$ (cyCp); $5.37 / 5.31, 4.95, 4.41$ (Cp). **¹⁹F-NMR** (563.7 MHz, [D₈]-toluene, 268 K): $\delta = -132.8$ (broad, 6F, o-B(C₆F₅)₃), -159.7 (broad, 3F, p-B(C₆F₅)₃), -164.2 (broad, 6F, m-B(C₆F₅)₃). **¹¹B{¹H}-NMR** (64.2 MHz, [D₈]-toluene, 268 K): $\delta = -14.3$. **IR** (KBr): $\tilde{\nu} = 2960$ (m), 2851 (w), 1648 (vs), 1521 (vs), 1454 (vs), 1371 (m), 1277 (s), 1227 (w), 1171 (w), 1082 (vs), 988 (s), 816 (vs) cm⁻¹.



(E-18e) *E*-isomer

GCOSY (599.9 MHz / 599.9 MHz, [D₈]-toluene, 258 K): $\delta^1\text{H} / \delta^1\text{H} = 6.06 / 5.73, 5.38, 4.36;$
 $5.73 / 5.38, 4.36; 5.38 / 4.36$ (each Cp / Cp), $5.73 / 5.45, 4.46; 5.45 / 4.46$ (each tBuCp /
tBuCp), $5.78 / 5.32, 1.59, 1.49$ (2-H / 3-H, $1_{\text{syn}}\text{-H}, 1_{\text{anti}}\text{-H}$), $5.32 / 2.66, 2.44$ (3-H / 4'-H, 4-H),
 $2.66 / 2.44$ (4'-H / 4-H), $1.59 / 1.49$ ($1_{\text{syn}}\text{-H} / 1_{\text{anti}}\text{-H}$). **GHSQC** (150.8 MHz / 599.9 MHz,
[D₈]-toluene, 258 K): $\delta^{13}\text{C} / \delta^1\text{H} = 132.2 / 5.78$ (C2 / 2-H), $124.2 / 5.62$ (C3 / 3-H), $124.2 /$
 $5.73, 107.8 / 4.46, 100.9 / 5.45$ (each tBuCp / tBuCp), $122.6 / 6.06, 119.2 / 5.73, 109.7 / 4.38,$
 $104.9 / 5.38$ (each Cp / Cp), $51.1 / 1.59, 1.49$ (C1 / $1_{\text{syn}}\text{-H}, 1_{\text{anti}}\text{-H}$), $30.5 / 1.02$ (tBu-CH₃ / tBu-
CH₃), $-5.9 / 0.16, -7.4 / -0.25$ (each Si(CH₃)₂ / Si(CH₃)₂). **GHMBC** (150.8 MHz / 599.9 MHz,
[D₈]-toluene, 258 K): $\delta^{13}\text{C} / \delta^1\text{H} = 153.2, 29.9 / 1.02$ (quart. tBuCp, quart. C(CH₃)₃ / tBu-
CH₃), $103.2, 99.6, -5.9 / 0.16$ (quart. tBuCp-CSi, quart. Cp-CSi, Si(CH₃)₂ / Si(CH₃)₂), $103.2,$
 $99.6, -7.4 / -0.25$ (quart. tBuCp-CSi, quart. Cp-CSi, Si(CH₃)₂ / Si(CH₃)₂). **1D-TOCSY** (599.9
MHz, [D₈]-toluene, 258 K): $\delta_{\text{irr}} / \delta_{\text{res}} = 5.78 / 5.62, 2.66, 2.44, 1.59, 1.49$ (2-H / 3-H, 4'-H, 4-
H, $1_{\text{syn}}\text{-H}, 1_{\text{anti}}\text{-H}$); $5.73 / 5.45, 4.46$ (tBuCp); $6.06 / 5.73, 5.38, 4.36$ (Cp). **¹⁹F-NMR** (563.7
MHz, [D₈]-toluene, 268 K): $\delta = -130.3$ (broad, 6F, o-B(C₆F₅)₃), -161.2 (broad, 3F, p-
B(C₆F₅)₃), -164.8 (broad, 6F, m-B(C₆F₅)₃). **¹¹B{¹H}-NMR** (64.2 MHz, [D₈]-toluene, 268 K):
 $\delta = -14.3$.

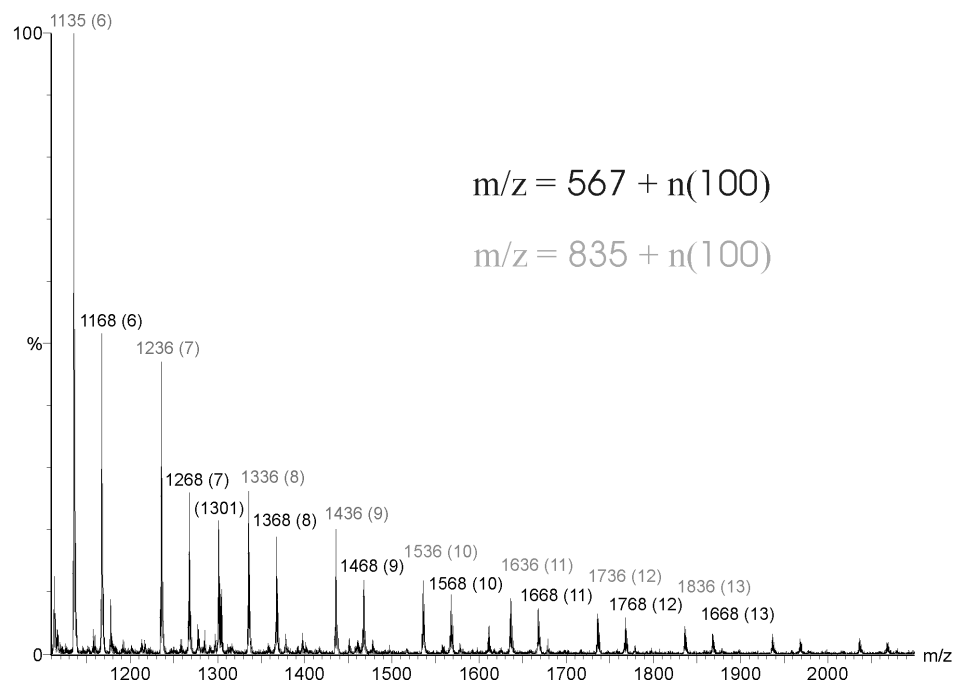
**(Z-18e)** *Z*-isomer

GCOSY (599.9 MHz / 599.9 MHz, [D₈]-toluene, 258 K): $\delta^1\text{H} / \delta^1\text{H} = 5.36 / 5.31, 4.86, 4.39;$
 $5.31 / 4.86, 4.39; 4.86 / 4.39$ (each Cp / Cp), $5.95 / 5.08, 4.95; 5.08 / 4.95$ (each tBuCp /
tBuCp), $5.08 / 4.54, 2.54, 0.95$ (2-H / 3-H, $1_{\text{syn}}\text{-H}, 1_{\text{anti}}\text{-H}$), $4.54 / -0.39, -1.74$ (3-H / 4'-H, 4-
H), $2.54 / 0.95$ ($1_{\text{syn}}\text{-H} / 1_{\text{anti}}\text{-H}$), $-0.39 / -1.74$ (4'-H / 4-H). **GHSQC** (150.8 MHz / 599.9
MHz, [D₈]-toluene, 258 K): $\delta^{13}\text{C} / \delta^1\text{H} = 133.9 / 5.08$ (C2 / 2-H), $115.2 / 5.36, 114.5 / 4.39,$
 $112.0 / 4.86, 108.1 / 5.31$ (each Cp / Cp), $110.6 / 4.54$ (C3 / 3-H), $109.2 / 5.95, 108.1 / 5.08,$
 $98.3 / 4.95$ (tBuCp-CH / tBuCp-CH), $55.8 / 2.54, 0.95$ (C1 / $1_{\text{syn}}\text{-H}, 1_{\text{anti}}\text{-H}$), $34.1 / 0.83$ (tBu-

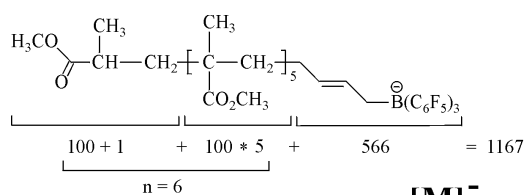
$\text{CH}_3/\text{tBu-CH}_3$), -4.7 / 0.14, -7.8 / 0.13 (each $\text{Si}(\text{CH}_3)_2 / \text{Si}(\text{CH}_3)_2$). **GHMBC** (150.8 MHz / 599.9 MHz, $[\text{D}_8]$ -toluene, 258 K): $\delta^{13}\text{C} / \delta^1\text{H} = 156.3, 33.4 / 0.83$ (quart. tBuCp, quart. $\text{C}(\text{CH}_3)_3 / \text{tBu-CH}_3$), 110.0, 99.3, -4.7 / 0.14 (quart. tBuCp-CSi, quart. Cp-CSi, $\text{Si}(\text{CH}_3)_2 / \text{Si}(\text{CH}_3)_2$), 110.0, 99.3, -7.8 / 0.13 (quart. tBuCp-CSi, quart. Cp-CSi, $\text{Si}(\text{CH}_3)_2 / \text{Si}(\text{CH}_3)_2$). **1D-TOCSY** (599.9 MHz, $[\text{D}_8]$ -toluene, 258 K): $\delta_{\text{irr}} / \delta_{\text{res}} = 2.54 / 5.08, 4.54, 0.95, -0.39, -1.74$ ($1_{\text{syn-H}} / 2\text{-H}, 3\text{-H}, 1_{\text{anti-H}}, 4'\text{-H}, 4\text{-H}$); 5.95 / 5.08, 4.95 (tBuCp); 5.36 / 5.31, 4.86, 4.39 (Cp). **^{19}F -NMR** (563.7 MHz, $[\text{D}_8]$ -toluene, 268 K): $\delta = -132.8$ (broad, 6F, o- $\text{B}(\text{C}_6\text{F}_5)_3$), -160.3 (broad, 3F, p- $\text{B}(\text{C}_6\text{F}_5)_3$), -164.3 (broad, 6F, m- $\text{B}(\text{C}_6\text{F}_5)_3$). **$^{11}\text{B}\{^1\text{H}\}$ -NMR** (64.2 MHz, $[\text{D}_8]$ -toluene, 268 K): $\delta = -14.0$. **IR** (KBr): $\tilde{\nu} = 2968$ (m), 2879 (w), 1654 (vs), 1526 (vs), 1471 (vs), 1371 (s), 1294 (s), 1265 (vs), 1177 (s), 977 (vs), 827 (vs) cm^{-1} .

ESI MS spectra

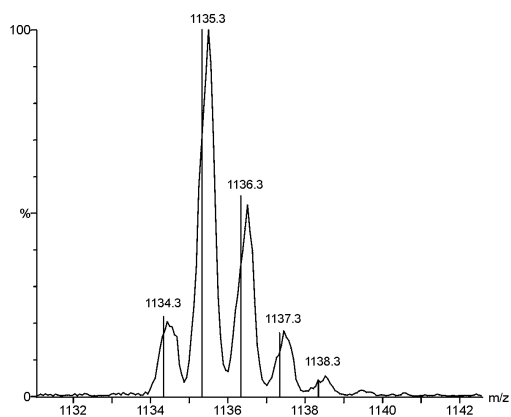
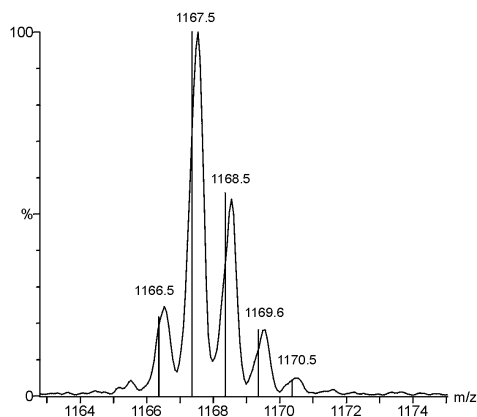
Reaction of **16** with MMA; reaction time 15 minutes at 25°C (1301: *Coulomb* dimer).



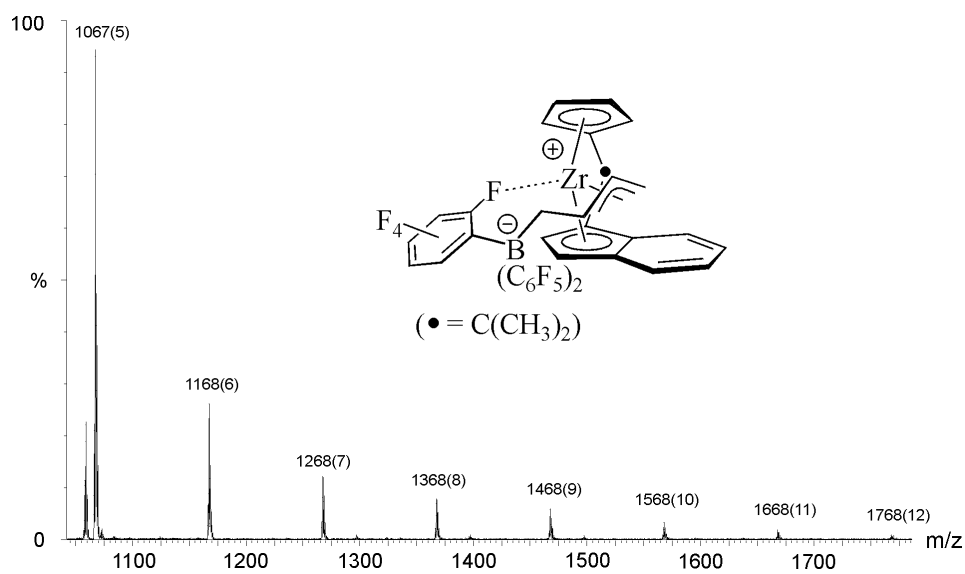
Expanded peaks:



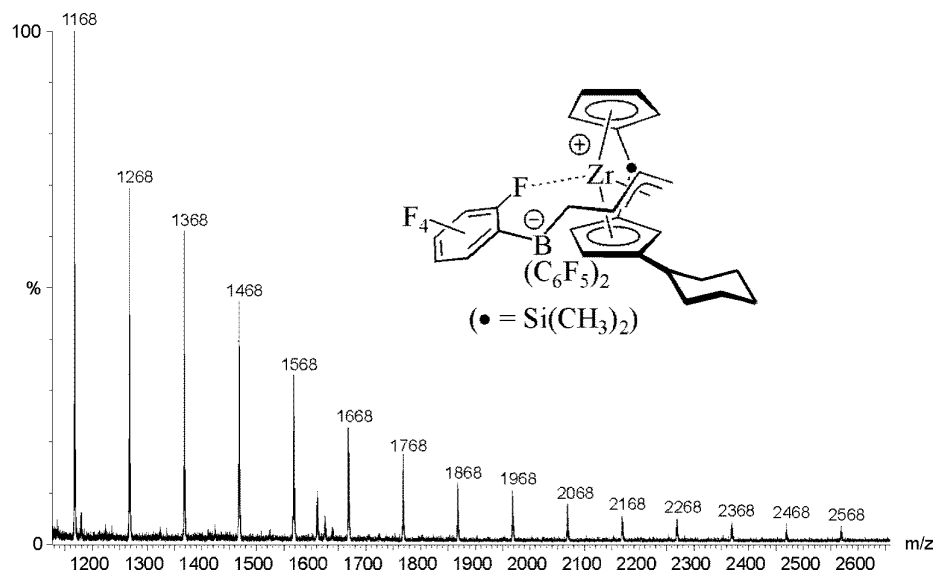
[M-(HOCH₃)⁻



Reaction of **16** with MMA; reaction time 5 minutes at -20°C .



Reaction of **18c** with MMA; reaction time 20 minutes at 25°C .



Comp.	m_{cat} [mg]	n_{cat} [μmol]	activator	m_{act} [mg]	n_{act} [μmol]	yield %	M_n	M_w / M_n	% mm	% mr	% rr
3	18	57	$\text{B}(\text{C}_6\text{F}_5)_3$	29	57	97	44300	1.36	76	12	13
3	18	57	$\text{B}(\text{C}_6\text{F}_5)_3$	29	57	92	49600	1.39	76	14	12
9a	17	56	$\text{B}(\text{C}_6\text{F}_5)_3$	28	56	42	68600	1.81	16	24	60
9b	20	62	$\text{B}(\text{C}_6\text{F}_5)_3$	32	62	39	51600	2.17	41	27	32
9b	18	56	$\text{B}(\text{C}_6\text{F}_5)_3$	28	56	55	n. b.	n. b.	43	23	34
9d	20	57	$\text{B}(\text{C}_6\text{F}_5)_3$	29	57	48	36100	1.88	75	12	13
9d	20	57	$\text{B}(\text{C}_6\text{F}_5)_3$	29	57	41	34400	1.63	74	13	13
9c	22	56	$\text{B}(\text{C}_6\text{F}_5)_3$	28	56	36	27400	2.32	64	12	24
9e	21	58	$\text{B}(\text{C}_6\text{F}_5)_3$	30	58	53	22700	1.19	83	10	7
11e	20	55	$(\text{C}_4\text{H}_5\text{N})\text{B}(\text{C}_6\text{F}_5)_3$	32	55	0	-	-	-	-	-
13e	20	55	$(\text{C}_4\text{H}_5\text{N})\text{B}(\text{C}_6\text{F}_5)_3$	32	55	0	-	-	-	-	-

Results of the polymerization reactions of MMA with the methyl zirconocene cation catalysts **3**, **9**, and **13**. Yield (%) per hour. M_n in g mol^{-1} . $M_w / M_n = D$ (polydispersity). The mm, mr, and rr triads were analysed by $^1\text{H-NMR}$ experiments.

comp.	m _{cat} [mg]	n _{cat} [μmol]	activator	m _{act} [mg]	n _{act} [μmol]	yield %	M _n	M _w / M _n	% mm	% mr	% rr
16 *	24	66	B(C ₆ F ₅) ₃	34	66	94	62500	1.47	81	11	8
16	24	66	B(C ₆ F ₅) ₃	34	66	91	65300	1.14	85	9	6
16	24	66	B(C ₆ F ₅) ₃	34	66	89	54000	1.21	n. o.	n. o.	n. o.
18a *	22	66	B(C ₆ F ₅) ₃	34	66	27	34000	1.70	16	21	65
18b *	23	66	B(C ₆ F ₅) ₃	34	66	19	13100§	2.43§	34§	27§	39§
18b	23	66	B(C ₆ F ₅) ₃	34	66	13	36300	1.18	21	31	48
18b	23	66	B(C ₆ F ₅) ₃	34	66	12	36100	1.26	n. o.	n. o.	n. o.
18d *	25	66	B(C ₆ F ₅) ₃	34	66	33	19000	1.67	48§	23§	29§
18d	25	66	B(C ₆ F ₅) ₃	34	66	26	33200	1.22	n. o. §	n. o. §	n. o. §
18d	25	66	B(C ₆ F ₅) ₃	34	66	21	34000	1.23	n. o. §	n. o. §	n. o. §
18c *	27	66	B(C ₆ F ₅) ₃	34	66	24	18600§	1.46	32	30	38
18c	27	66	B(C ₆ F ₅) ₃	34	66	19	37700	1.14	35	24	41
18e *	26	66	B(C ₆ F ₅) ₃	34	66	31§	14800§	1.32	65	18	17
18e	26	66	B(C ₆ F ₅) ₃	34	66	22	21900	1.18	67	16	17
18e	26	66	B(C ₆ F ₅) ₃	34	66	17	18400	1.20	n. o.	n. o.	n. o.

Results of the polymerization reactions of MMA with the butadiene Zirconocene betaime catalysts **16** and **18**. Yield (%) per hour. M_n in g mol⁻¹. M_w / M_n = D (polydispersity). The mm, mr, and rr triads were analysed by ¹H-NMR experiments. * Data from an early series of experiments. § Data not used for the calculation of the averaged values.

comp.	time (min)	m _{cat} [mg]	n _{cat} [μmol]	activator	m _{act} [mg]	n _{act} [μmol]	yield %	Mn	M _w / M _n	% mm	% mr	% ir
18d [#]	60	25	67	B(C ₆ F ₅) ₃	34	67	29	22400	1.1	53	19	28
18d [#]	60	25	67	B(C ₆ F ₅) ₃	34	67	29.5	23100	1.1	58	17	25
18d	10	25	67	B(C ₆ F ₅) ₃	34	67	3	41 [#]	1.2	32	27	41
18d	20	25	67	B(C ₆ F ₅) ₃	34	67	6	9350	1.1	28	27	45
18d	30	25	67	B(C ₆ F ₅) ₃	34	67	12	11800	1.1	38	24	38
18d	40	25	67	B(C ₆ F ₅) ₃	34	67	24	17850	1.1	37	24	39
18d	50	25	67	B(C ₆ F ₅) ₃	34	67	28	18750	1.1	41	22	37
18d	60	25	67	B(C ₆ F ₅) ₃	34	67	35	24100	1.1	30	26	44
18d [#]	10	25	67	B(C ₆ F ₅) ₃	34	67	3.2	5800	1.1	51	20	29
18d	20	25	67	B(C ₆ F ₅) ₃	34	67	5.9	8600	1.1	42	22	36
18d [#]	30	25	67	B(C ₆ F ₅) ₃	34	67	8.1	10950	1.2	59	16	25
18d	40	25	67	B(C ₆ F ₅) ₃	34	67	11.3	13350	1.1	39	23	38
18d	50	25	67	B(C ₆ F ₅) ₃	34	67	16.1	15950	1.1	35	24	41
18d	60	25	67	B(C ₆ F ₅) ₃	34	67	24.2	20400	1.1	30	25	45
18d	120	25	67	B(C ₆ F ₅) ₃	34	67	46.8	32700	1.1	38	22	40

Results of the polymerization reactions of MMA with the butadiene zirconocene baine catalysts **18d**. Yield (%) per hour. M_n in g mol⁻¹. M_w / M_n = D (polydispersity). The mm, mr, and ir triads were analysed by ¹H-NMR experiments. [#] Data not used for the calculation of the average values.

comp.	time (min)	m _{cat} [mg]	n _{cat} [μmol]	activator	m _{act} [mg]	n _{act} [μmol]	yield %	M _n	M _w / M _n	% mm	% mr	% rr
18d	10	20	53.5	B(C ₆ F ₅) ₃	27	53.5	3.2	6700	1.1	45	22	33
18d	20	20	53.5	B(C ₆ F ₅) ₃	27	53.5	4.8	8900	1.1	40	23	37
18d	30	20	53.5	B(C ₆ F ₅) ₃	27	53.5	7.5	10950	1.2	65 [#]	17 [#]	18 [#]
18d	40	20	53.5	B(C ₆ F ₅) ₃	27	53.5	11.8	13800	1.1	43	22	35
18d	50	20	53.5	B(C ₆ F ₅) ₃	27	53.5	15.6	17600	1.1	56 [#]	22 [#]	22 [#]
18d	60	20	53.5	B(C ₆ F ₅) ₃	27	53.5	18.3	19600	1.1	42	22	36
18d	120	20	53.5	B(C ₆ F ₅) ₃	27	53.5	33.3	30400	1.1	39	23	38

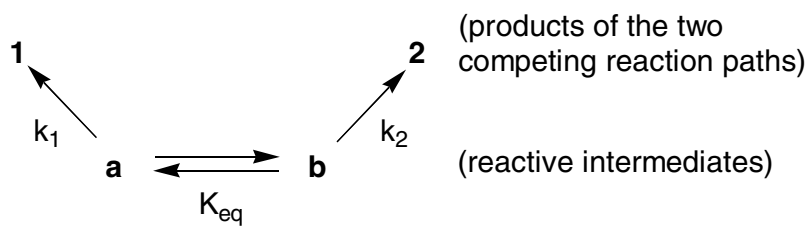
Results of the polymerization reactions of MMA with the butadiene zirconocene betaïne catalysts **18d**. Yield (%) per hour. M_n in g mol⁻¹. M_w / M_n = D (polydispersity). The mm, mr, and rr triads were analysed by ¹H-NMR experiments. [#] Data not used for the calculation of the average values.

comp.	time (min)	m _{cat} [mg]	n _{cat} [μmol]	activator	m _{act} [mg]	n _{act} [μmol]	yield %	Mn	M _w / M _n	% mm	% mr	% rr
9d	60	20	57	B(C ₆ F ₅) ₃	29	57	33	22700	1.2	88	7	5
9d	60	20	57	B(C ₆ F ₅) ₃	29	57	35	28000	1.1	90	6	4
9d	10	20	57	B(C ₆ F ₅) ₃	29	57	1	4500	1.1	57 [#]	19 [#]	24 [#]
9d	20	20	57	B(C ₆ F ₅) ₃	29	57	3	8900	1.1	85	9	6
9d	30	20	57	B(C ₆ F ₅) ₃	29	57	11	14150	1.1	90	6	4
9d	40	20	57	B(C ₆ F ₅) ₃	29	57	17	19500	1.1	92	6	2
9d	50	20	57	B(C ₆ F ₅) ₃	29	57	32	25600	1.1	90	6	4
9d	60	20	57	B(C ₆ F ₅) ₃	29	57	35	31000	1.1	90	6	4
9d	10	20	57	B(C ₆ F ₅) ₃	29	57	3.2	5700	1.2	84	9	7
9d	20	20	57	B(C ₆ F ₅) ₃	29	57	10.7	10800	1.1	84	9	7
9d	30	20	57	B(C ₆ F ₅) ₃	29	57	21.5	15200	1.1	88	7	5
9d	40	20	57	B(C ₆ F ₅) ₃	29	57	30.1	18600	1.1	88	7	5
9d	50	20	57	B(C ₆ F ₅) ₃	29	57	35.5	23700	1.1	90	6	4
9d	60	20	57	B(C ₆ F ₅) ₃	29	57	47.3	27100	1.1	88	8	4
9d	120	20	57	B(C ₆ F ₅) ₃	34	67	69.9	36850	1.1	91	6	3

Results of the polymerization reactions of MMA with the butadiene zirconocene betaine catalysts **18d**. Yield (%) per hour. M_n in g mol⁻¹. M_w / M_n = D (polydispersity). The mm, mr, and rr triads were analysed by ¹H-NMR experiments. [#] Data not used for the calculation of the average values.

Curtin-Hammett Situation

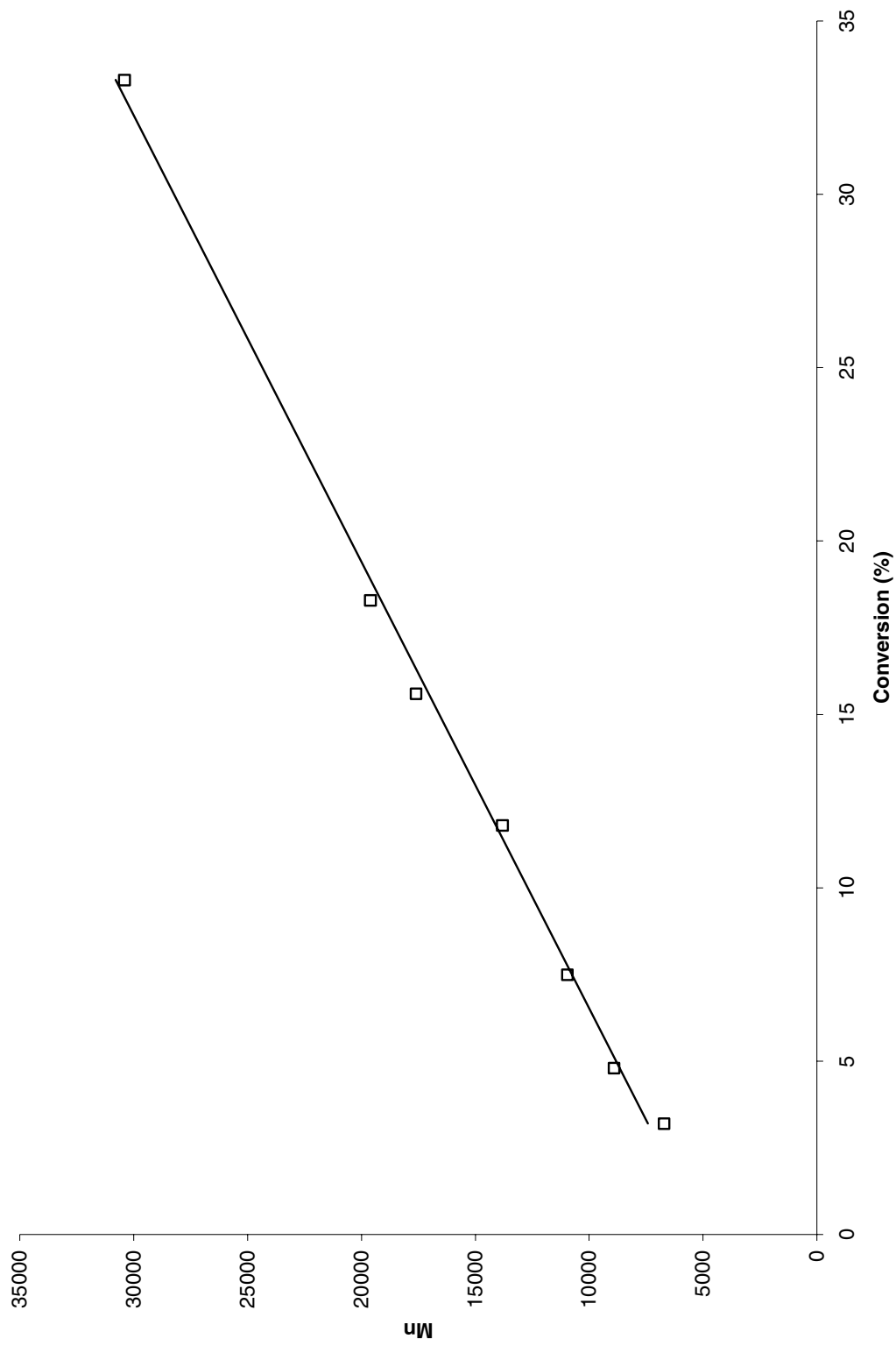
Kinetic Scheme:

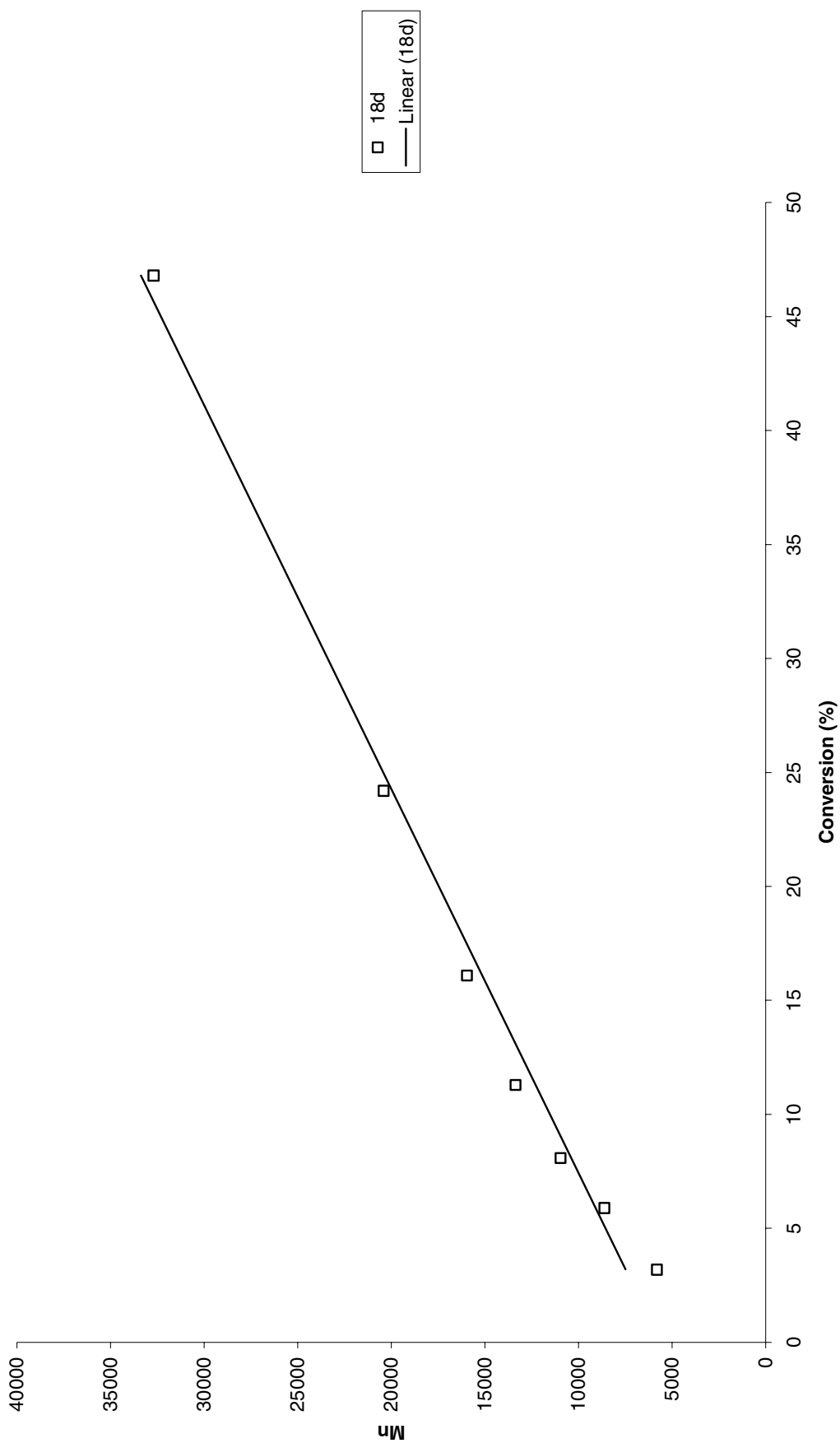


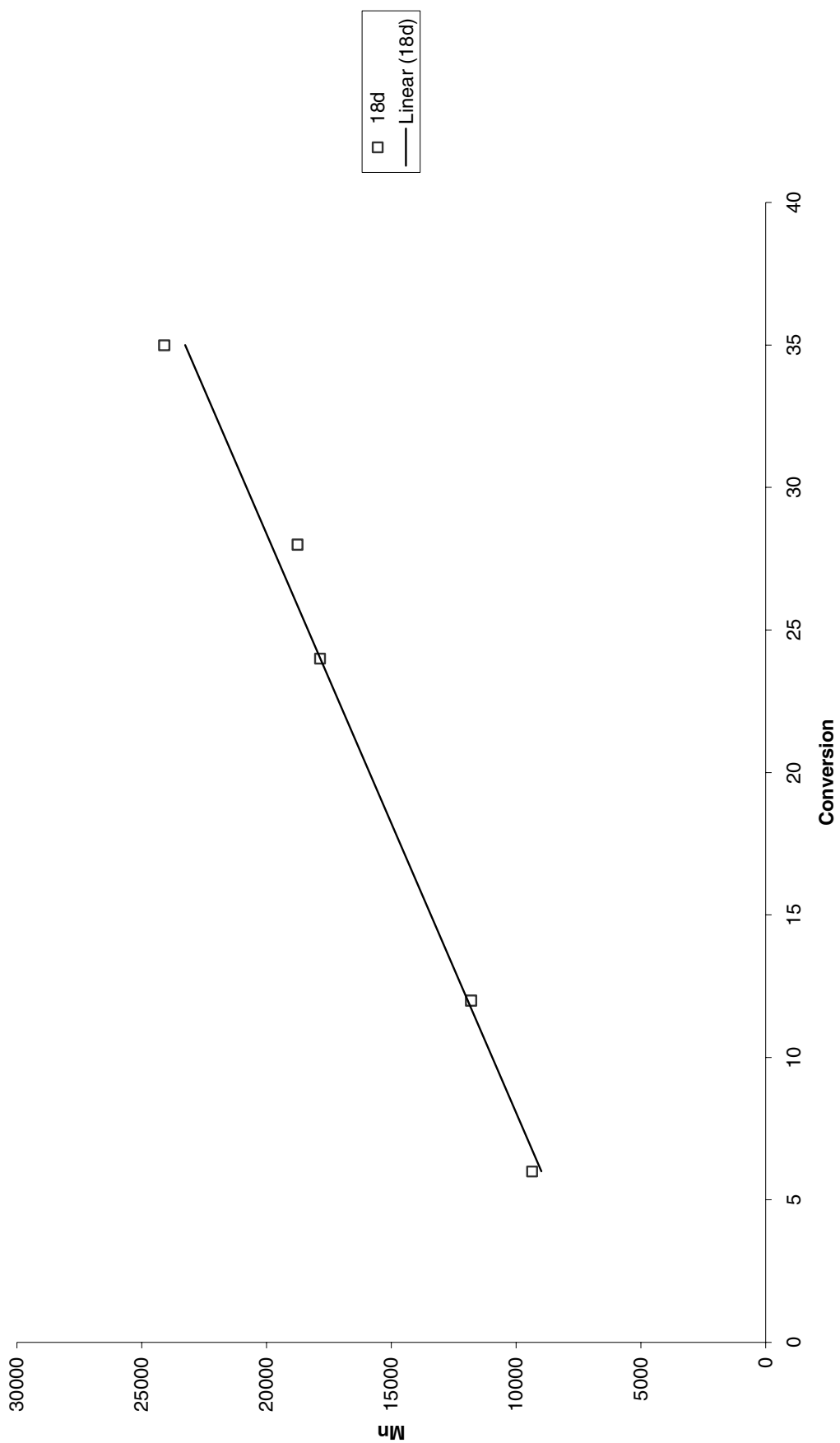
$$v_1 = k_1 [a]; \quad v_2 = k_2 [b];$$

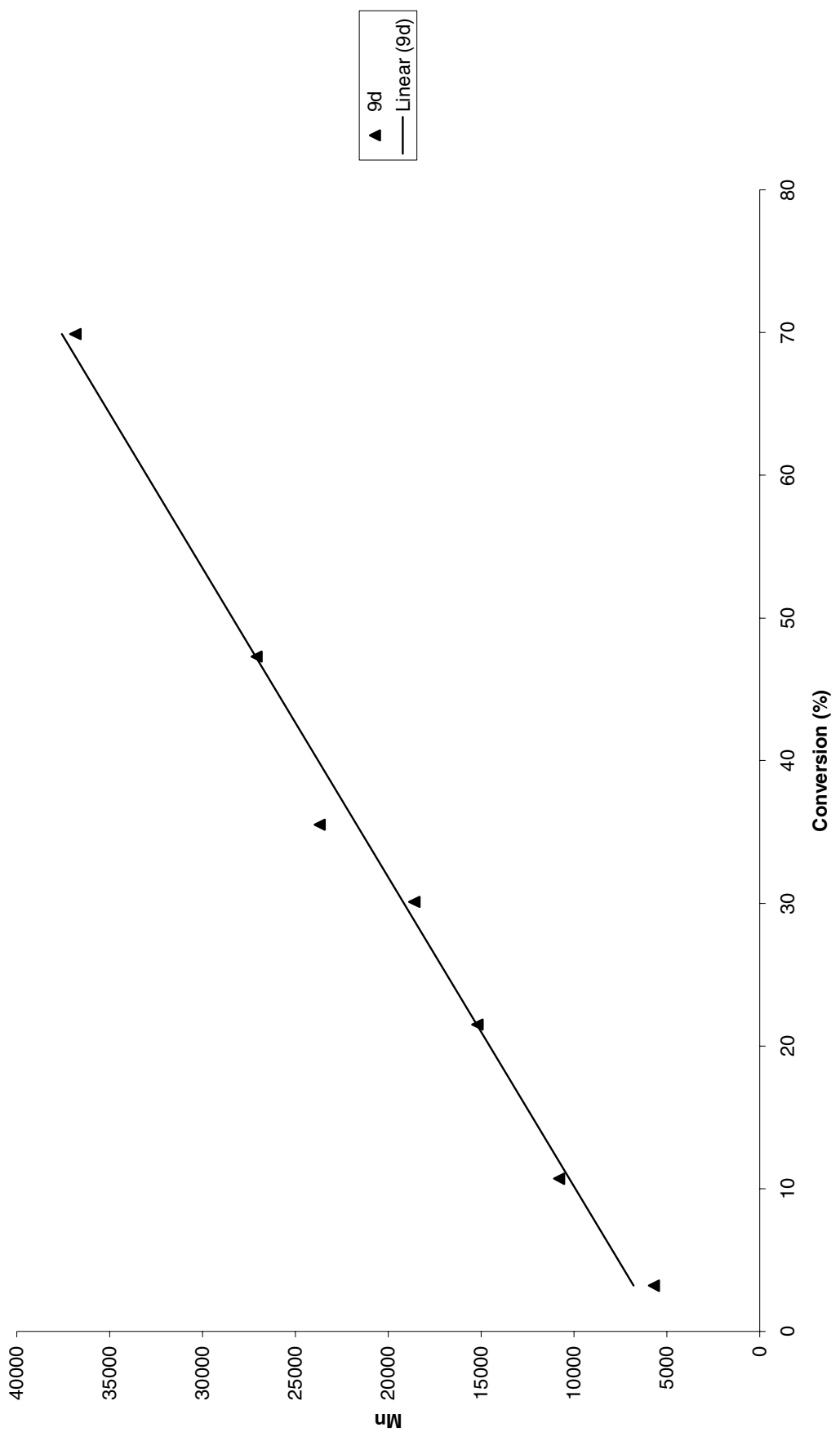
$$\frac{v_1}{v_2} = \frac{k_1 [a]}{k_2 [b]}; \quad \frac{[a]}{[b]} = K_{eq}; \quad [a] = [b] K_{eq};$$

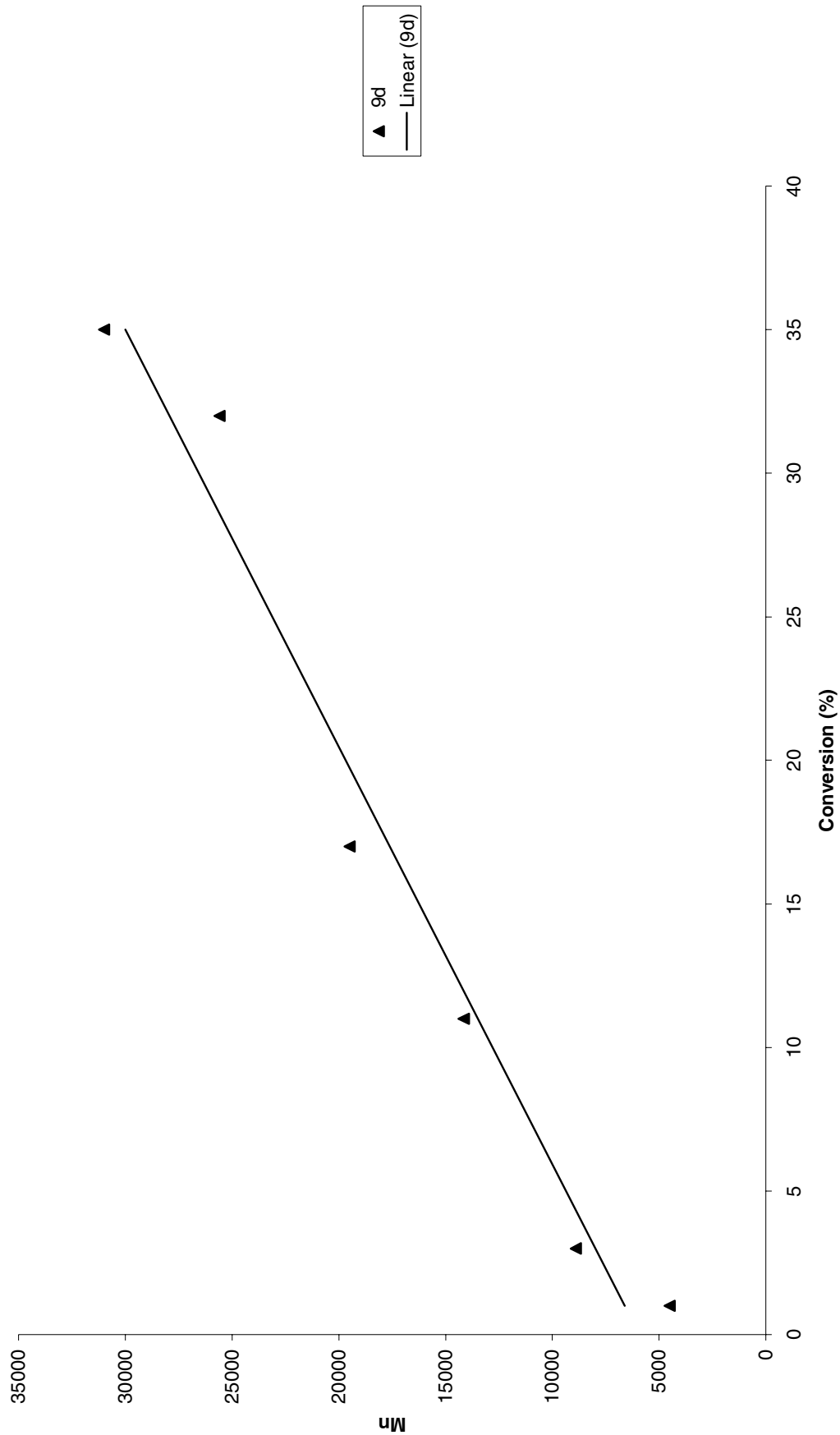
$$\frac{v_1}{v_2} = \frac{k_1}{k_2} K_{eq}; \quad (1)$$











▲ 9d
— Linear (9d)

