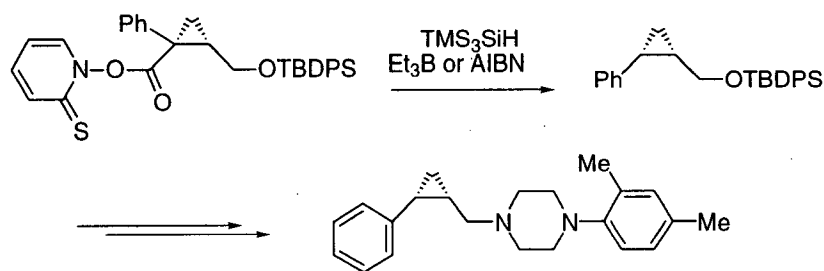


Supporting Information

Construction of a *Cis*-Cyclopropane via Reductive Radical Decarboxylation. Enantioselective Synthesis of *Cis*- and *Trans*-1-arylpiperazyl-2- phenylcyclopropanes Designed as Antidopaminergic Agents

Kazuya Yamaguchi, Yuji Kazuta, Hiroshi Abe, Akira Matsuda, and Satoshi Shuto*

*Graduate School of Pharmaceutical Sciences, Hokkaido University,
Kita-12, Nishi-6, Kita-ku, Sapporo 060-0812, Japan
shu@pharm.hokudai.ac.jp*



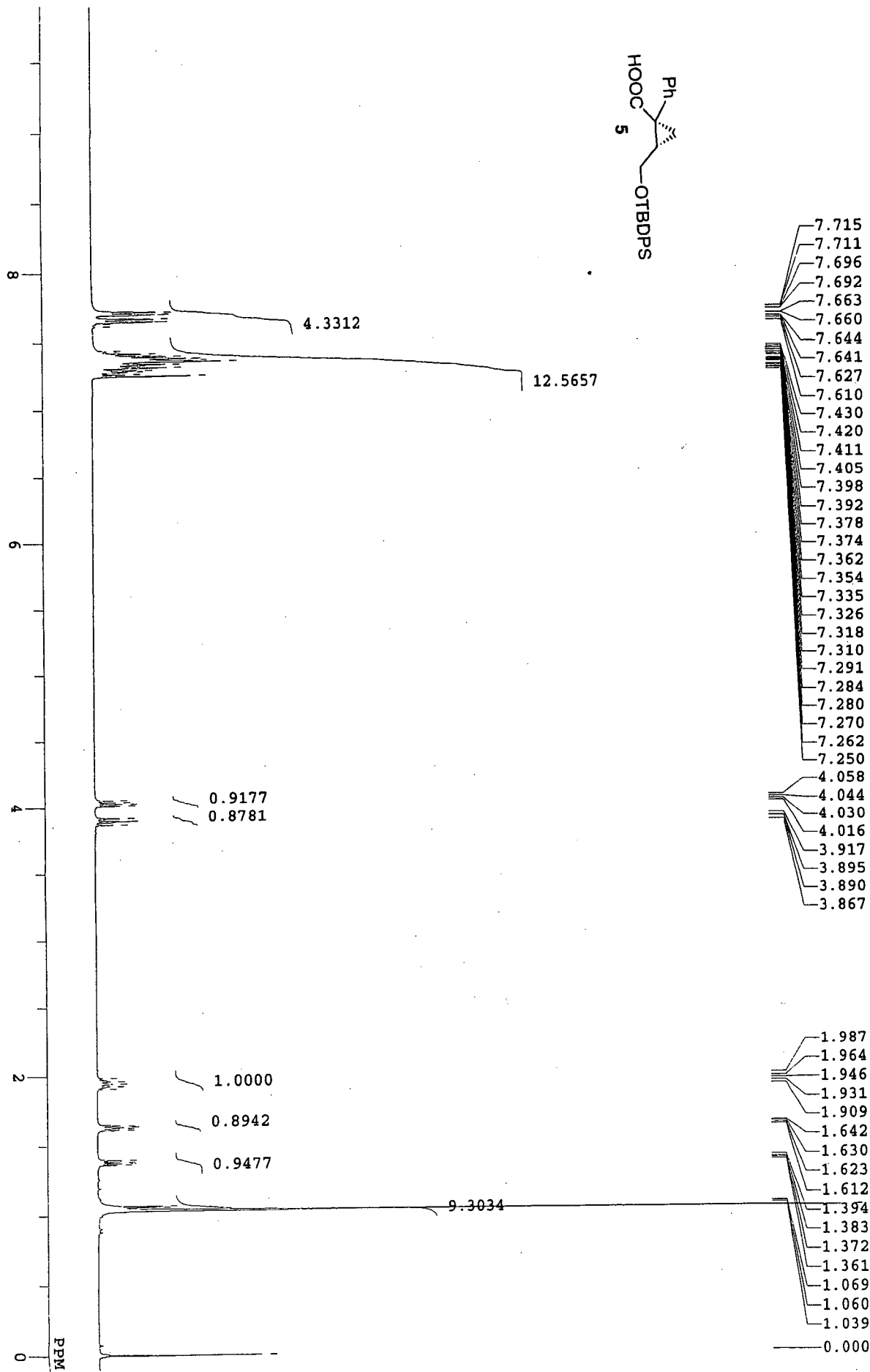
Contents

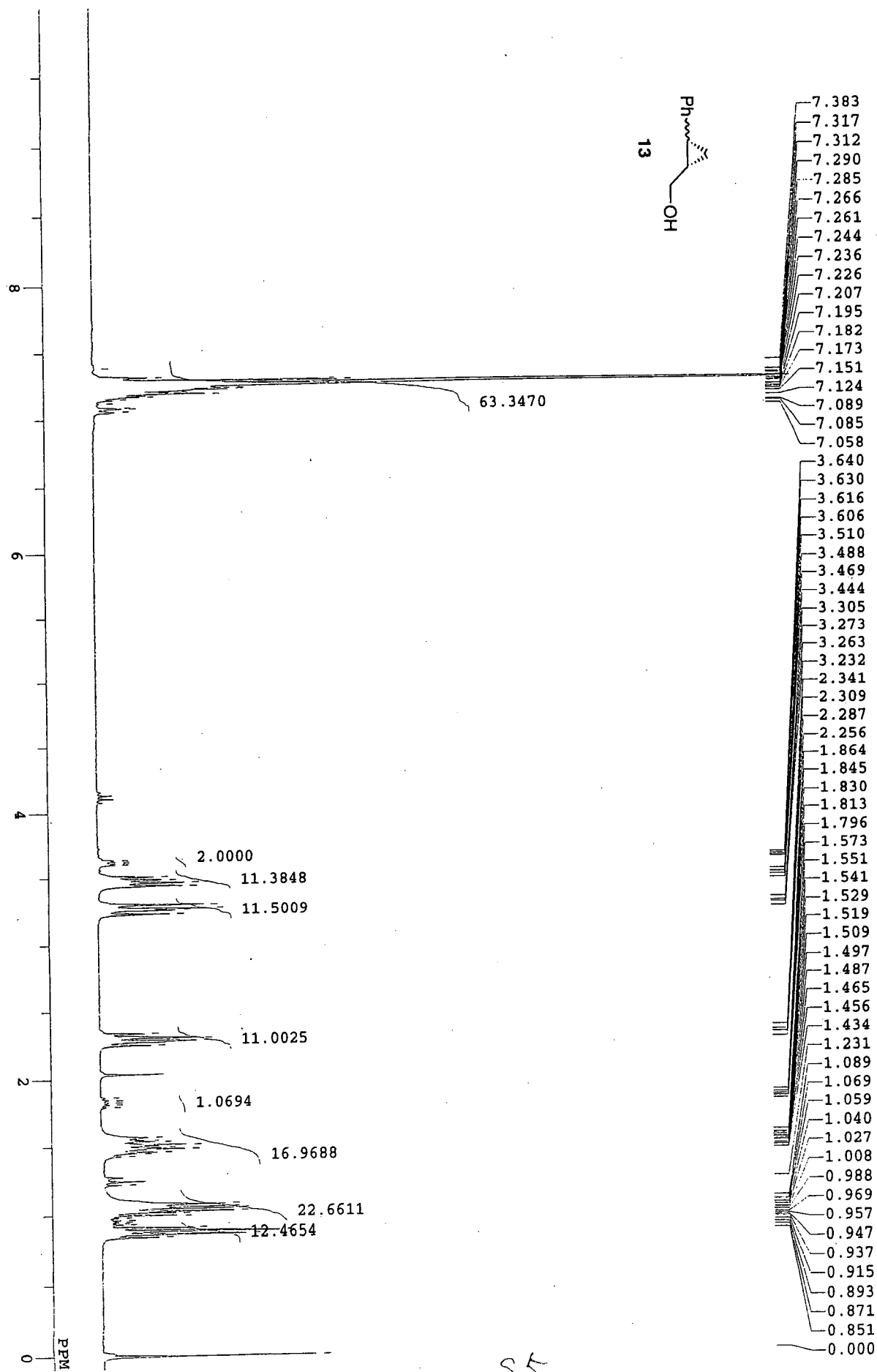
S2, General Experimental Methods; S3, Table of atomic coordinates for the calculated structure shown in Figure 3c; S4–S10, ^1H NMR charts of compounds **5**, **13**, **14**, **15**, **16**, **16-trans**, and **2a**.

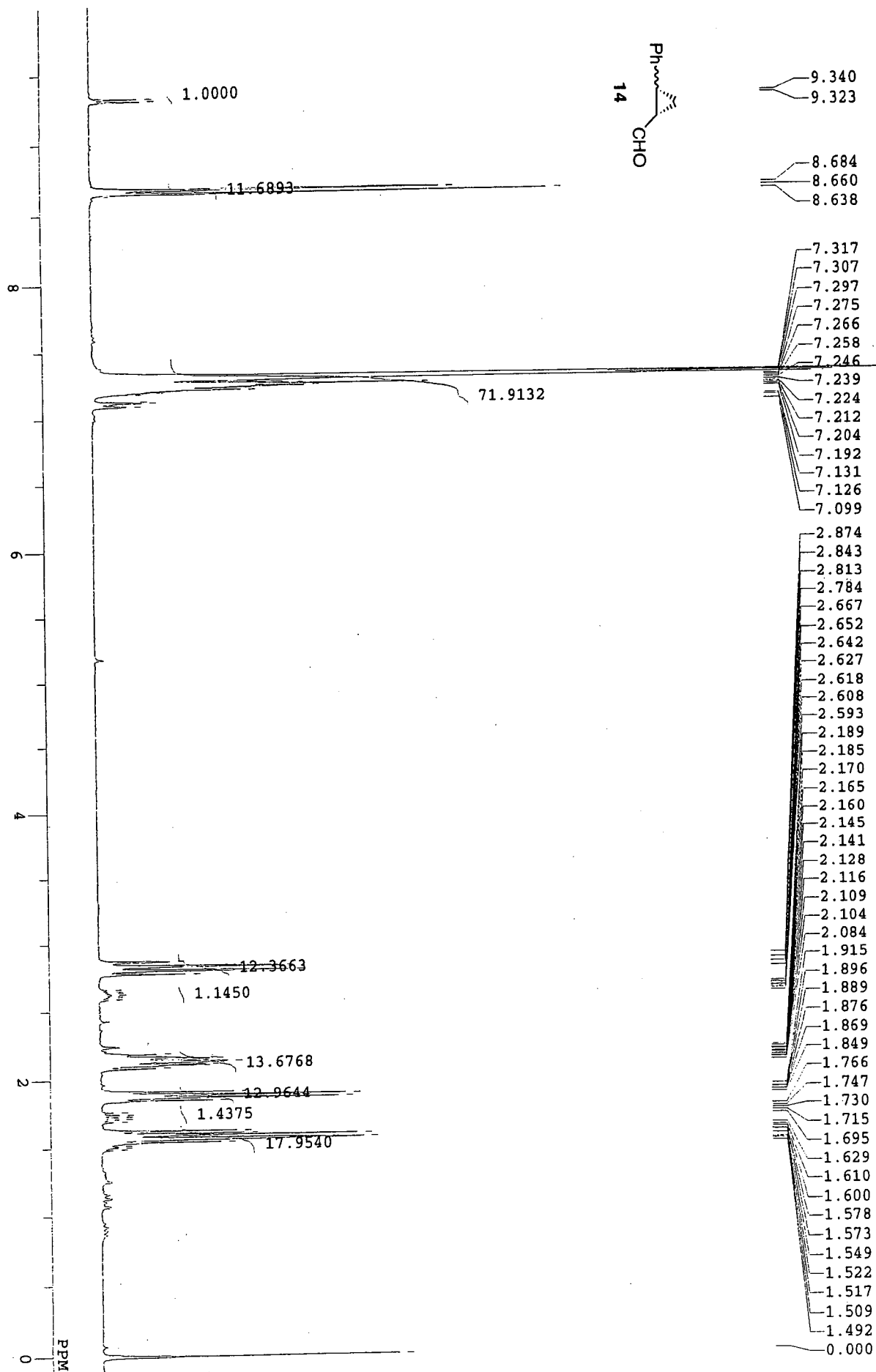
General Experimental Methods. NMR spectra were recorded at 270, 400 and 500 MHz (^1H) and at 100 MHz (^{13}C), and are reported in ppm downfield from Me_4Si . The ^1H NMR assignments indicated were in agreement with COSY spectra. Mass spectra were obtained by electron impact (EI) or the fast atom bombardment (FAB) or electrospray ionization (ESI) method. Thin-layer chromatography was performed on Merck coated plate 60F₂₅₄. Silica gel chromatography was performed with Merck silica gel 5715. Reactions were carried out under an argon atmosphere.

Table S1. Atomic coordinates for the calculated structure shown in Figure 3c.

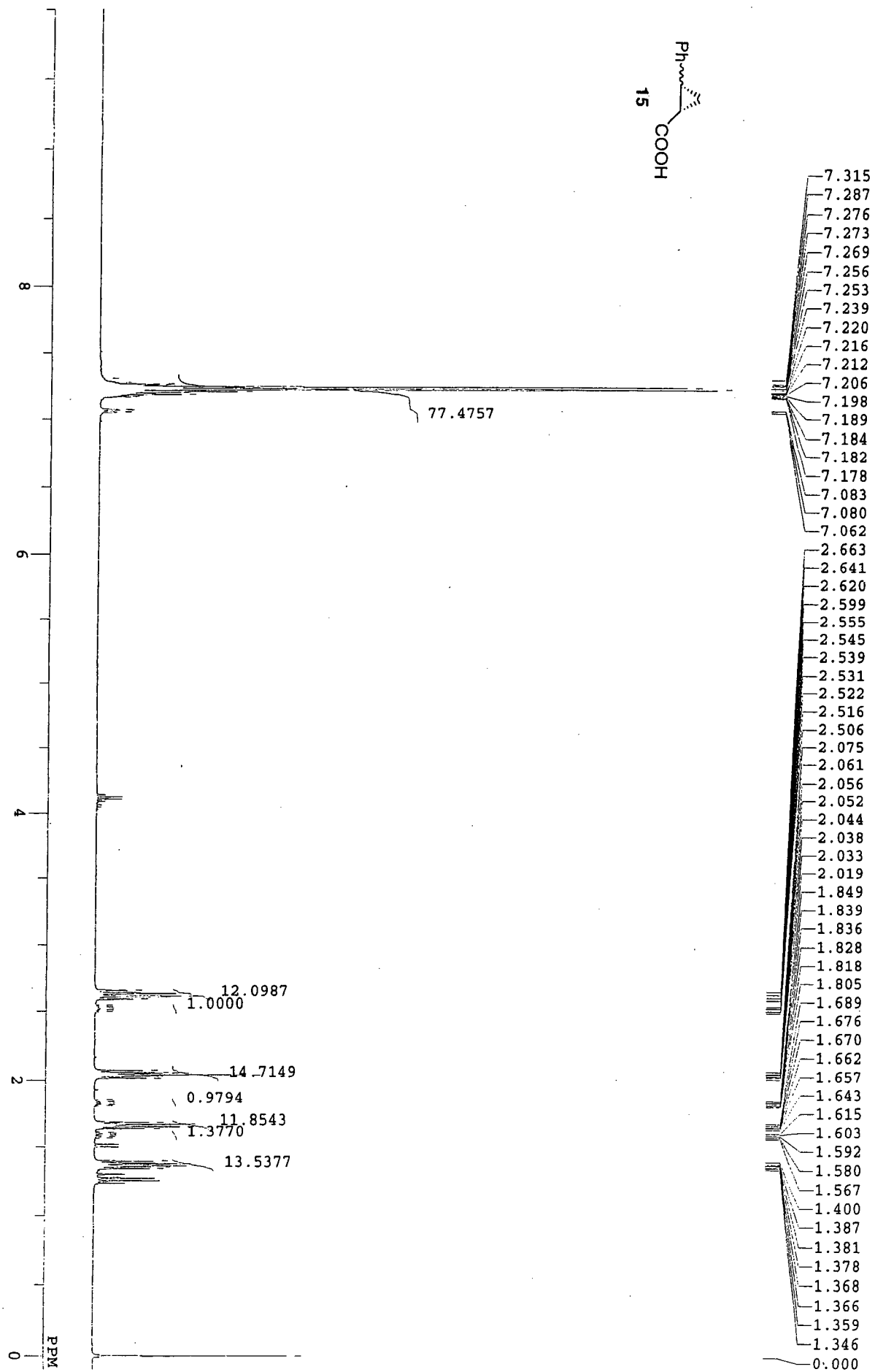
HETATM	1	C	0.377	-0.195	0.188
HETATM	2	C	-0.957	-0.275	0.600
HETATM	3	C	-1.900	-0.340	1.713
HETATM	4	C	-2.370	-0.382	0.241
HETATM	8	C	-3.145	0.789	-0.348
HETATM	10	C	3.079	-0.036	-0.637
HETATM	11	C	1.435	-0.110	1.140
HETATM	12	C	0.727	-0.197	-1.194
HETATM	13	C	2.053	-0.119	-1.591
HETATM	14	C	2.756	-0.032	0.728
HETATM	6	H	-2.117	0.564	2.287
HETATM	7	H	-1.976	-1.254	2.307
HETATM	9	H	-2.721	-1.360	-0.106
HETATM	5	H	-3.034	0.829	-1.439
HETATM	20	H	-2.784	1.740	0.057
HETATM	21	H	-4.215	0.704	-0.122
HETATM	19	H	4.116	0.025	-0.954
HETATM	15	H	1.185	-0.107	2.197
HETATM	16	H	-0.066	-0.262	-1.935
HETATM	17	H	2.300	-0.123	-2.650
HETATM	18	H	3.548	0.032	1.470
CONNECT	1	2	11	12	
CONNECT	2	1	3	4	
CONNECT	3	2	4	6	7
CONNECT	4	2	3	8	9
CONNECT	8	4	5	20	21
CONNECT	10	13	14	19	
CONNECT	11	1	14	15	
CONNECT	12	1	13	16	
CONNECT	13	10	12	17	
CONNECT	14	10	11	18	
CONNECT	6	3			
CONNECT	7	3			
CONNECT	9	4			
CONNECT	5	8			
CONNECT	20	8			
CONNECT	21	8			
CONNECT	19	10			
CONNECT	15	11			
CONNECT	16	12			
CONNECT	17	13			
CONNECT	18	14			
END					

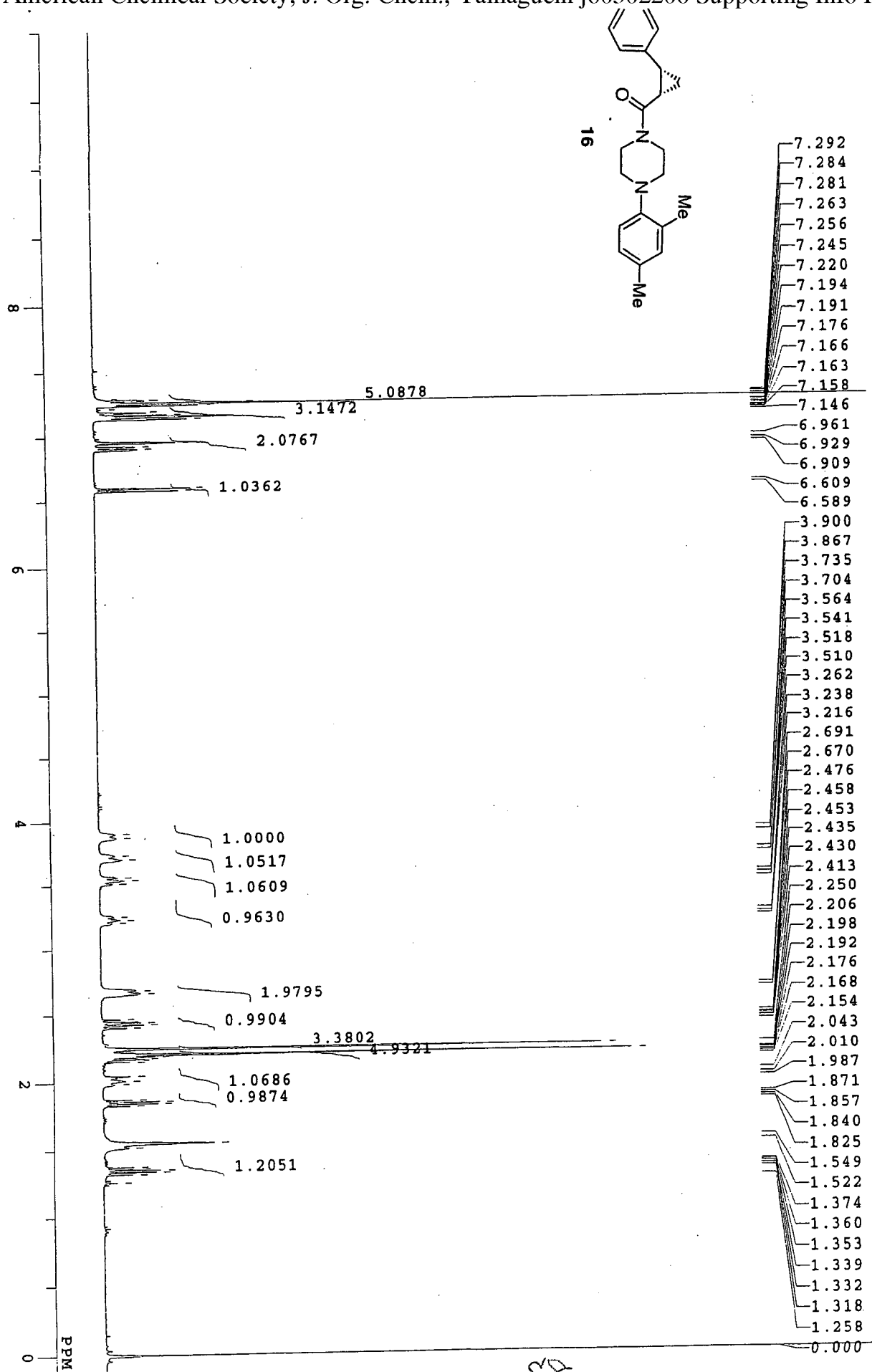


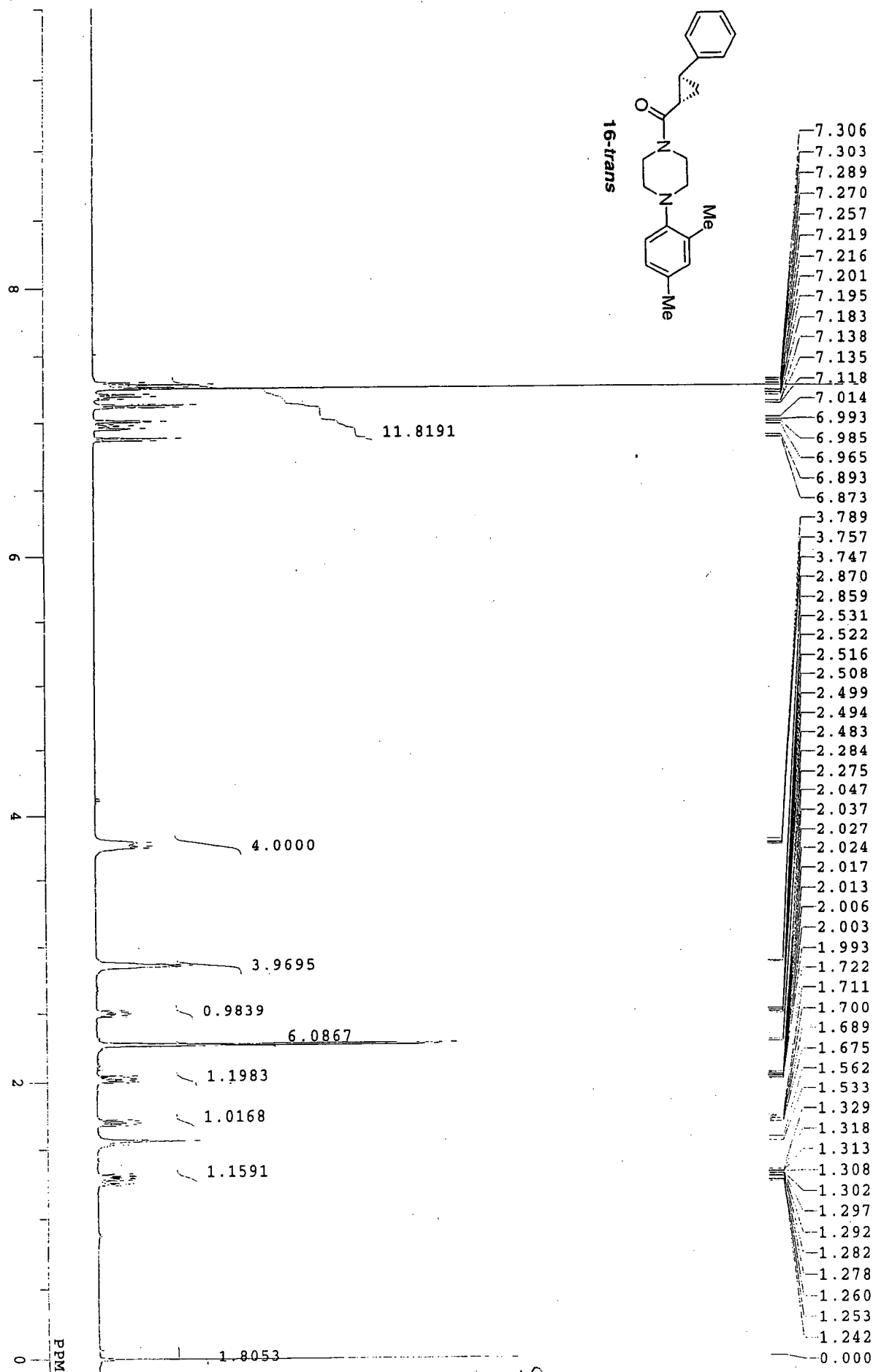




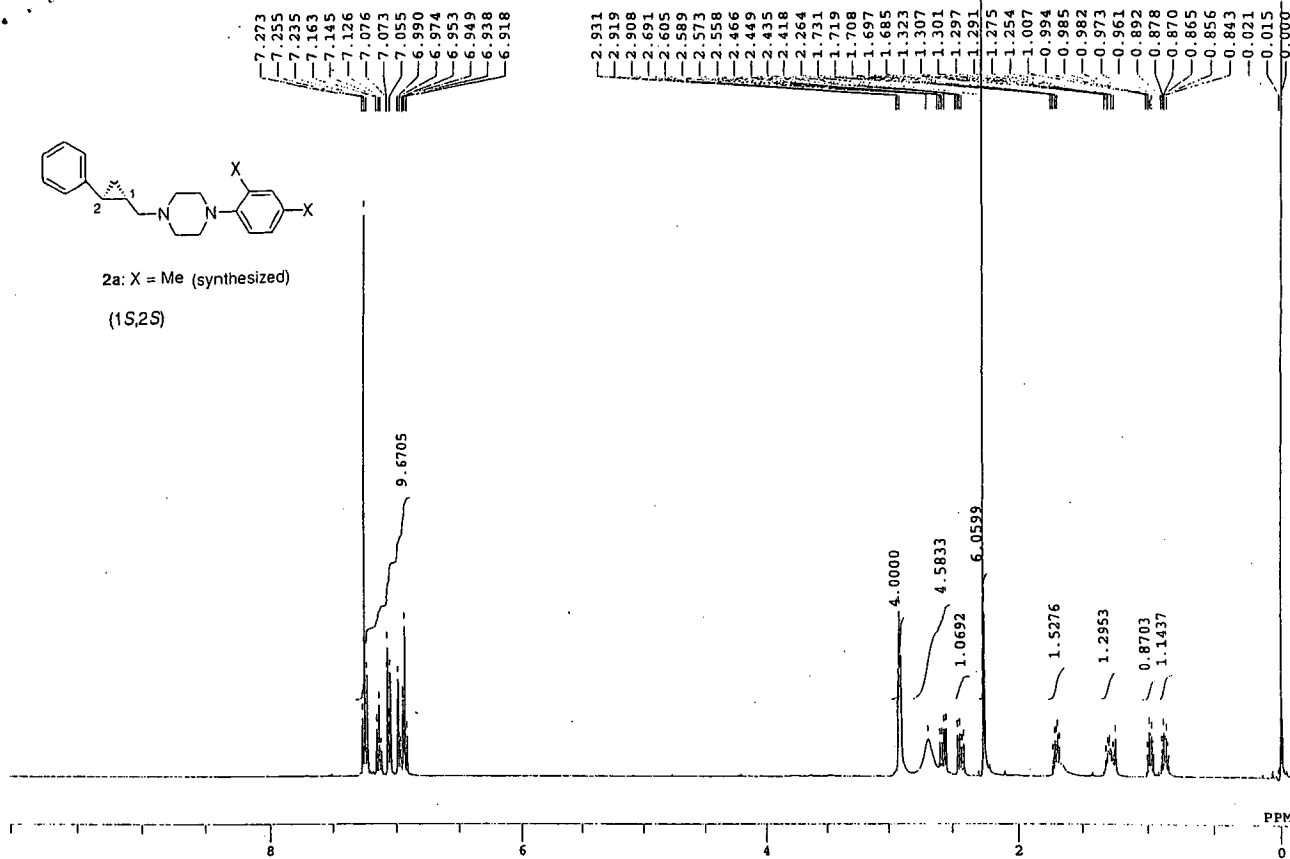
CC







829



ST
 OBSERVE HI
 FREQUENCY 299.953 MHz
 SPECTRAL WIDTH 9999.7 Hz
 ACQUISITION TIME 0.861 sec
 RELAXATION DELAY 0.500 sec
 PULSE WIDTH 10.0 usec
 AMBIENT TEMPERATURE
 NO. REPLICATIONS 16
 DOUBLE PRECISION ACQUISITION
 DATA PROCESSING
 FT SIZE 16384
 TOTAL ACQUISITION TIME 3 minutes

2a (authentic)

