

Supplementary Information

Characterization of the post-assembly line tailoring processes in teicoplanin biosynthesis

**Oleksandr Yushchuk^a, Bohdan Ostash^a, Thu H. Pham^b, Andriy Luzhetskyy^{c,d},
Victor Fedorenko^a, Andrew W. Truman^{b*}, Liliya Horbal^{a,c*}**

^a Department of Genetics and Biotechnology, Ivan Franko National University of Lviv, Ukraine

^b Department of Molecular Microbiology, John Innes Centre, Colney Lane, Norwich, UK

^c Department of Pharmaceutical Biotechnology, Saarland University, Campus, Saarbrücken, Germany

^d Helmholtz-Institute for Pharmaceutical Research Saarland (HIPS) Helmholtz Center for Infectious Research (HZI), Saarbrücken, Germany

*Corresponding author for genetics – Liliya Horbal (lihorbal@gmail.com) and for chemistry – Andrew W. Truman (andrew.truman@jic.ac.uk)

Inventory of Supporting Information

| Contents | Page |
|--|------|
| Figure S1. Inactivation of the <i>tei10*</i> , <i>tei3*</i> , <i>tei11*</i> , <i>tei13*</i> and <i>tei30*</i> genes. | 3 |
| Figure S2. MS/MS analysis of teicoplanins shown in Figure 1 | 4 |
| Figure S3. High-resolution MS/MS analysis of AGT-mannose (1 , panel A) and AGT (2 , panel B) produced by <i>A. teichomyceticus</i> Δ <i>tei10*</i> . | 5 |
| Figure S4. MS/MS analysis of 3 produced by <i>A. teichomyceticus</i> Δ <i>tei3*</i> . | 6 |
| Figure S5. MS/MS analysis of 5 (panel A) and 6 (panel B) produced by <i>A. teichomyceticus</i> Δ <i>tei11*</i> . | 6 |
| Figure S6. MS spectrum of deschloro 5 produced by <i>A. teichomyceticus</i> Δ <i>tei11*</i> . | 7 |
| Figure S7. Relative proportion of compounds produced by <i>A. teichomyceticus</i> Δ <i>tei11*</i> . | 7 |
| Figure S8. Comparative sequence alignment of the <i>Tei13*</i> with well-characterized fatty acyl-AMP ligases (FAALs) and fatty acyl-coenzyme A ligases (FACLs) | 8-9 |
| Figure S9. Percentage identity matrix of proteins shown in Figure S8. | 9 |
| Figure S10. Comparative sequence alignment of the <i>Tei30*</i> with well-described type II thioesterase RifR from <i>Amycolatopsis mediterranei</i> and SrfA from <i>Bacillus subtilis</i> . | 10 |

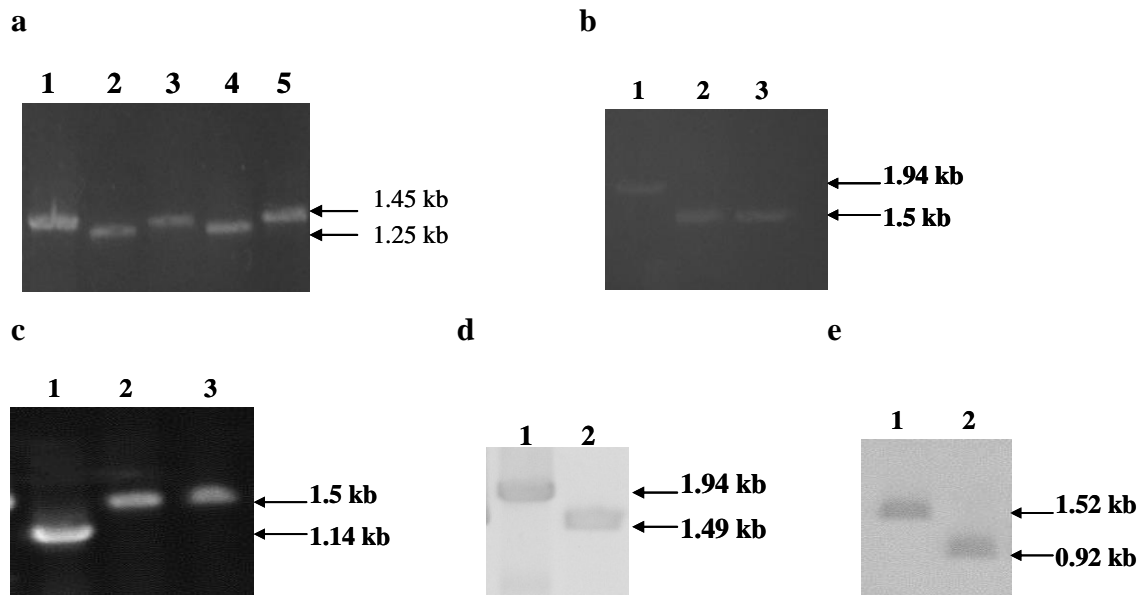


Figure S1. Inactivation of the *tei10**, *tei3**, *tei11**, *tei13** and *tei30** genes. **A** Results of the PCR amplification of the *tei10** gene from the chromosomal DNA of the $\Delta tei10^*$ mutant (1, 3, 5) and the wild type strain (2, 4). **B** Results of the PCR amplification of the *tei3** gene from the chromosomal DNA of the wild type strain (1) and the $\Delta tei3^*$ mutants (2, 3). **C** Results of the PCR amplification of the *tei11** gene from the chromosomal DNA of the wild type strain (1) and the $\Delta tei3^*$ mutants (2, 3). **D** Results of the PCR amplification of the *tei13** gene from the chromosomal DNA of the wild type strain (1) and the $\Delta tei13^*$ mutant (2). **E** Results of the PCR amplification of the *tei30** gene from the chromosomal DNA of the $\Delta tei30^*$ mutant (1) and the wild type strain (2).

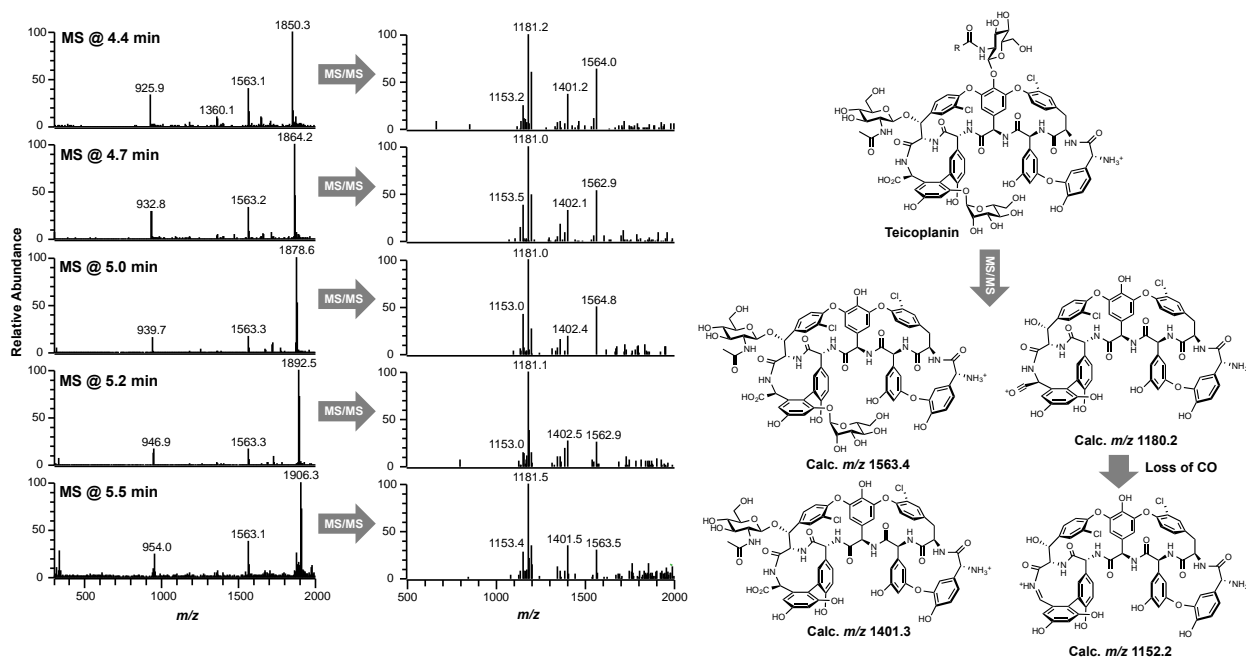


Figure S2. MS/MS analysis of teicoplanins shown in Figure 1 illustrating that they all fragment in an identical manner, and therefore differ in the nature of the acyl chain attached to the glucosaminyl group on amino acid 4. Fragment peaks differ by ± 1 due to the variety of teicoplanin isotope peaks that can be selected for fragmentation.

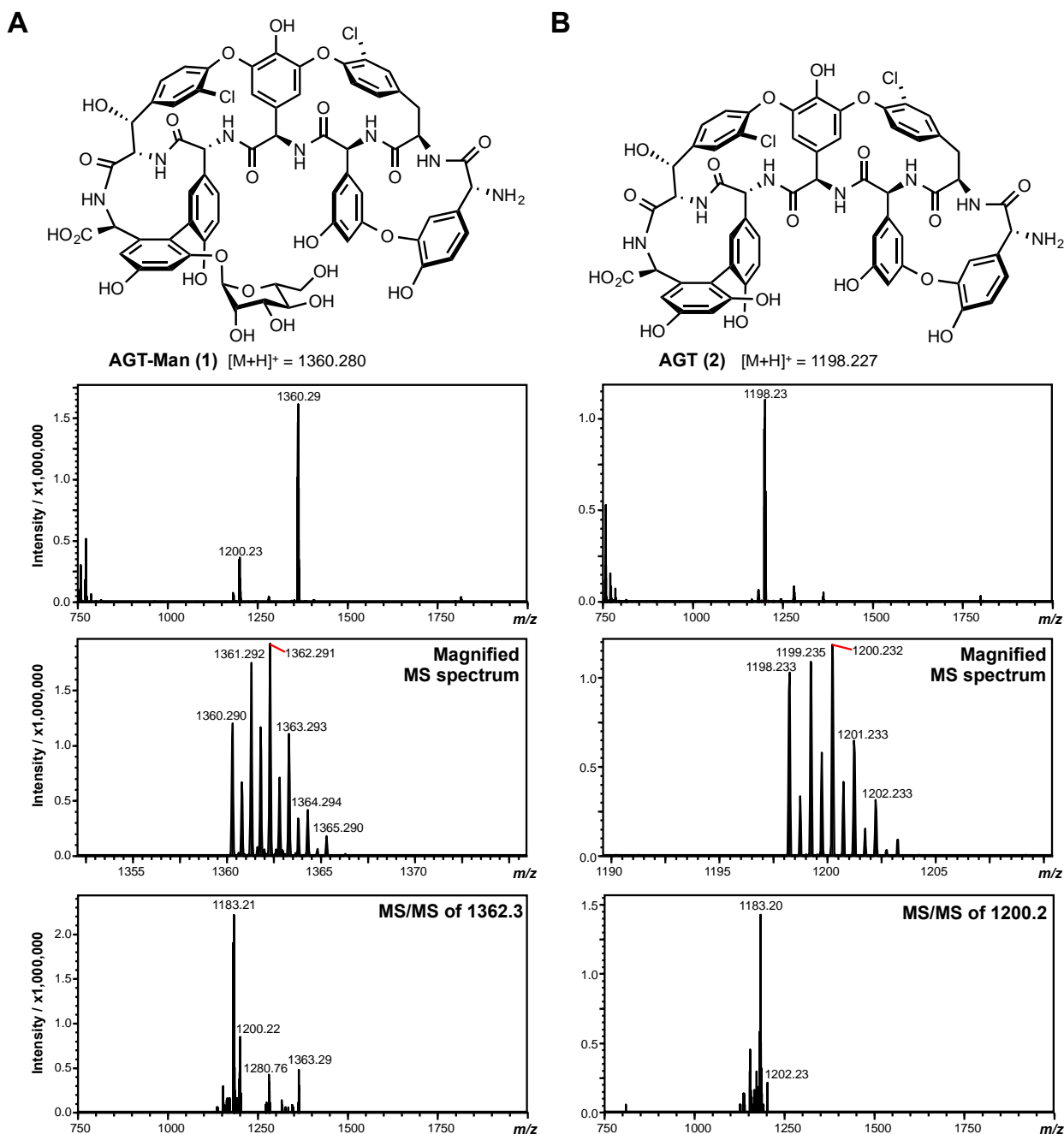


Figure S3. High-resolution MS/MS analysis of AGT-mannose (**1**, panel A) and AGT (**2**, panel B) produced by *A. teichomyceticus* Δ *tei10*^{*}. The magnified MS spectrum indicates some unusual peaks spaced by 0.5 mass units, which could reflect the presence of $[2M+2H]^{2+}$ in the mass spectrometer. This would be consistent with the ability of many glycopeptides to dimerize, although this phenomenon was not observed for all compounds identified in this study.

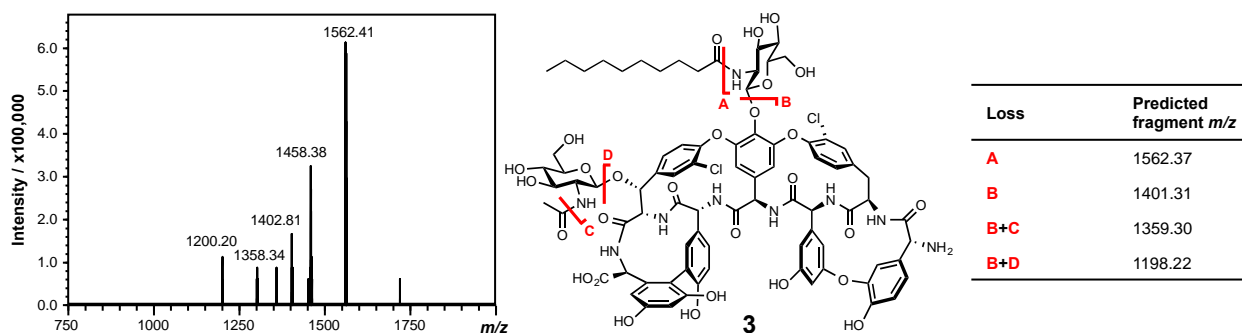


Figure S4. MS/MS analysis of **3** produced by *A. teichomyceticus* $\Delta tei3^*$. Differences between predicted and observed masses are likely to arise from the number of isotopes that can be selected for fragmentation (m/z 3 isolation width).

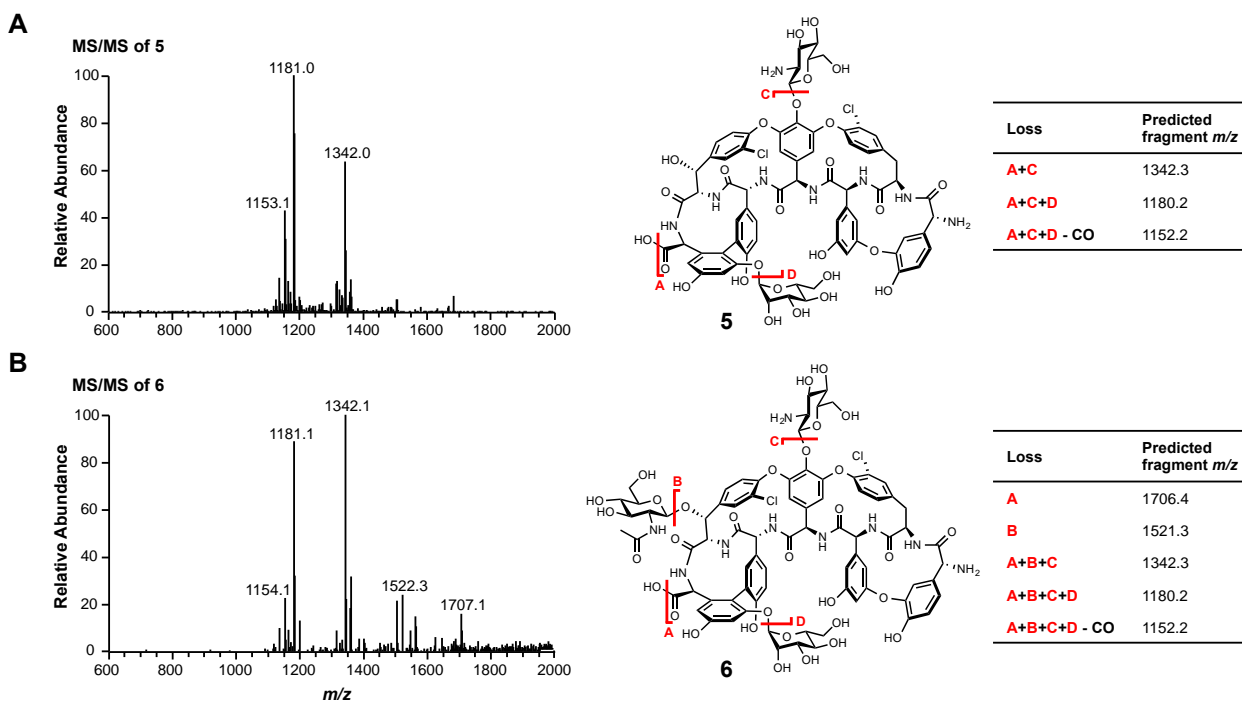


Figure S5. MS/MS analysis of **5** (panel A) and **6** (panel B) produced by *A. teichomyceticus* $\Delta tei11^*$.

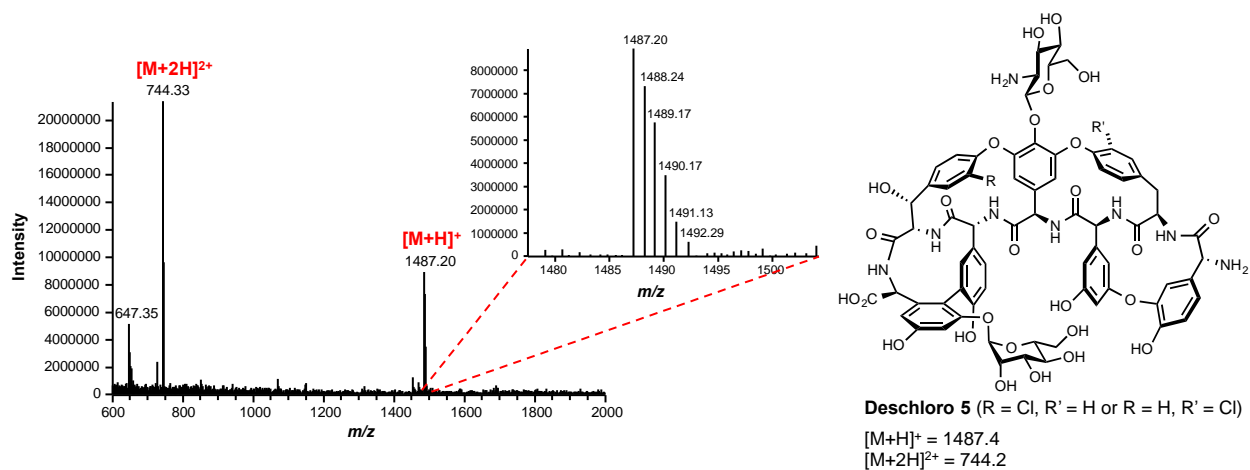


Figure S6. MS spectrum of deschloro **5** produced by *A. teichomyceticus* $\Delta tei11^*$. The isotope pattern is consistent with the illustrated monochlorinated compound ($[M+H]^+ = C_{70}H_{68}ClN_8O_{27}^+$).

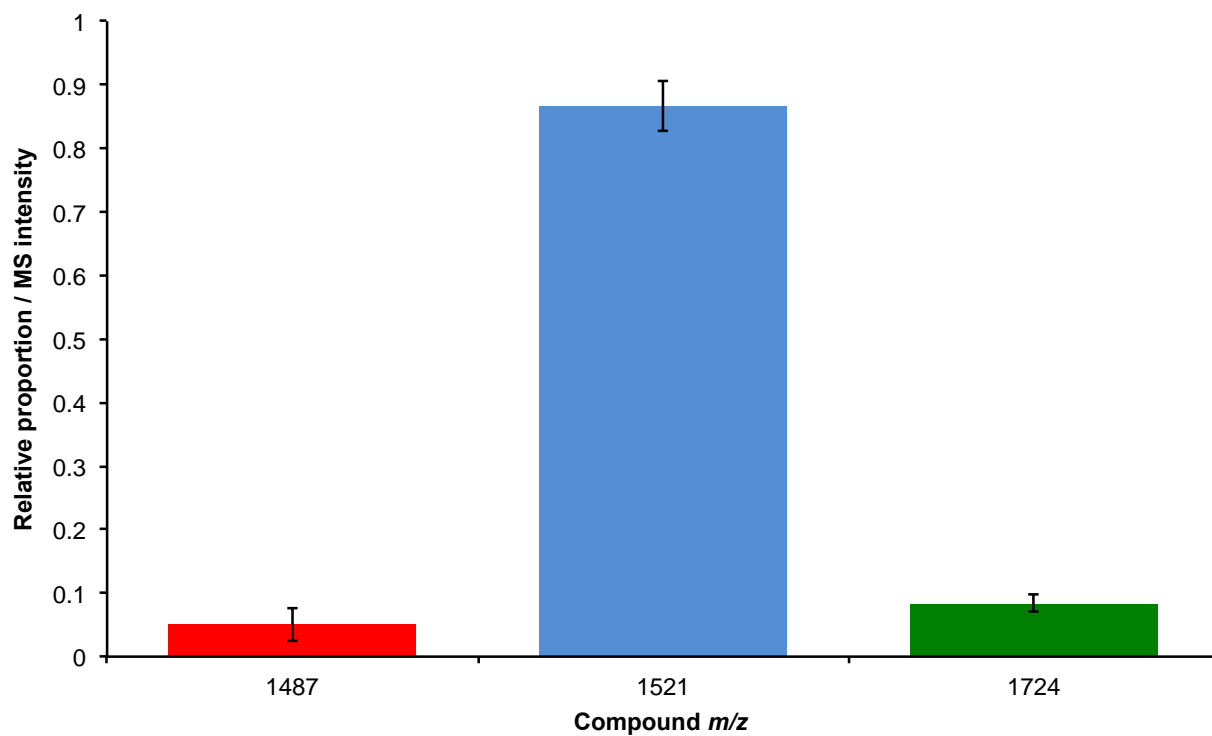


Figure S7. Relative proportion of compounds produced by *A. teichomyceticus* $\Delta tei11^*$. *m/z* 1521 is compound **5**, *m/z* 1487 is a deschloro version of **5**, and *m/z* 1724 is compound **6**.

```

Teil3* -----MG---YD-MATAPDLVTLIRQHVAGRPDADAVGFLTDPDDIRGGVVSWTYQ 48
DptE -----MS---ES-RCAGQGLVGLALRTWARFRARETAVVLV-RDTGTDDDTASVDYQ 47
RevS MELALPAELAPT-----LPEALRLRSEQQPDTVAVVFLRDGETP---EETLTYGR 47
EcFAAL --MSNKIFTHSLPMR-YADFPTLVDALDYAALSSA---GMNFYDR---RCQLEDQLEYQT 51
LpFAAL -----MKKE-YLQCQSLVDVVRLRALHSPNKKSCFTLNKE-----LEETMTYEQ 43
MtFAAL --MALGSLPELLPG-GSGRTPLTERAARWAREKPDAPAYTFVDYSADPAGAHVTVSWAE 57
AsFAAL -----MQ-----TVNEMLRRAATRAPDHICALA--V-----PARGRLRTHAE 34
TtFAAL ---MEGERMNAFPSTMMDEELNLWDFLERAAALFGRKEVVSRLH-----TGEVHRTTYAE 52
:

Teil3* LDREARGYAAWLQURL-PAGSRVLLLYPNGLDFVAAFFGCLYAGMIAVPAPLPGRYRHH- 106
DptE LDEWARSIAVTLRQQL-APGGRALLLLPSGPEFTAAYLGLYAGLAAPVAPLPGRHRFE- 105
RevS LDRAARARAAALEAAG-LAGGTAVLLYPSGLEFVAALLGCMYAGTAGAPVQVPTRRRGM- 105
EcFAAL LKARAEAGAKRLLSLNLKKGDRVALIAETSSEFVEAFFACQYAGLVAVPLAIPMGVQQRD 111
LpFAAL LDQHAKATAATLQAEAGAKPGDRVLLLFAPGLPLIQAFGLGCLYAGCIAVPIYPPAQEKLL- 102
MtFAAL TDRRARAVAATLRQVS-GPGERALLLPQTELYMMTMLGAMYAHVIAVPLFSPDLPGHA- 115
AsFAAL LRARVEAVAARLHADGLRPQQRVAVVAPNSADVVIAIALAHR--LGAVPALLNPRLK--- 89
TtFAAL VYQRARMLMGLRALGVGVGDRVATLGNHFRHLEAYFAVPG--MGAVLHTANPRLS--- 107
.. * . : : .

Teil3* --QHRVATISADARVSAVLTAAHLGEVDRWARACGL-DHL----LIAVGDEPEFGDPAG 159
DptE --RRRVAAIAADSGAGVVLTVAGETASVHDWLTETTAPATR----VVAVDDRAALGDPAQ 159
RevS ---ERARIADDAKAKTILTTTAVKREVEEHFADLL--TGL----TVIDTESLPDVPDDA 156
EcFAAL SWSAKLQGLLASCQPAAIITGDEWLPVNAATHDN--PEL-----HVLSHAWFKALPEAD 164
LpFAAL ---DKAQIRVTNSKPVIVLMIADHI---KKFTADELNTNPKFLKIPAIALLESIELNRSS 156
MtFAAL ---DRLIGAYADSEPAVIVTTRNALPHVEKFLADHDVQPQK---EILFAEEDPALADR 168
AsFAAL --SAELABELIKRGETAAVAVGRQ-VADAIQSG-SGAR-----IIFGLDLVRDGEPEYS 140
TtFAAL --PKEIAYILNHAEDKVLFLDPNLLPLVEAIRGELKTVQH----FVVMDEKAPEG-YLA 159
. :

Teil3* -----WTPASPERATIALLOYTSGSTGDPKGVVVTHDNILYNLD-ACVRGL-RWPDD 209
DptE -----WDDPGVAPDDVALIOYTSGSTGNPKGVVVVTHANLLANAR-NLAEAC-ELTAA 209
RevS -----PAVRLPGPDDVALLOYTSGSTGDPKGEVETHANFRANVA-ETVELW-PVRSD 206
EcFAAL -----VALQRPVPNDIAYLOYTSGSTRFPRGVIITHREVMANLR-AISHDGIKLRPG 215
LpFAAL -----WQPTSIKSNDIAFLOYTSGSTMHPKGMVSHHNLLDNLN-KIFTSF-HMNDE 206
MtFAAL -----WEDEPIGFDDVAYLOYTSGSTRRPAQVEITHGNVTANAA-QLWAGWAPERPN 219
AsFAAL YGPP---IEDPQREPA-QPAFIYTSGTTGLPKAAIIPQRAAESRVLFMSTQVGLRHGRH 196
TtFAAL YEEALGEEADPVRVPERAACGMAYYTTGTTGLPKGVVYSHRALVLHLSLAASLVDGTALSEK 219
. : **:* * .. :

Teil3* WRVGGWLPPLYHDLAMQGLLNMAVVRGGYALLMEPVSVFVRDPVWRWLRRTIAEHDI--QVTFA 267
DptE TPMGGWLPPMYHDMGLLLGTLTPALYLGTCVLMSSSTAFIKRPHLWLRITDRFGL--VWSSA 267
RevS GTVVNWLPPLFHDMGLMFVVMPLFTGVPAYLMAQPSFIRPARWLEAISRFRTGTH--AAA 264
EcFAAL DRCVSWLPPFYHDMGLLVGFLLLTPVATQLSVDYLRTQDFAMRPLQWLKLIKSNRG--TVSVA 273
LpFAAL TIIFSWLPPPHDMGLLIGCILTPYGGIQAIMMSPSFQLQNPWSLWKHITKYKA--TISGS 264
MtFAAL PELVSWLPPLFHDMGLISTMALPLVNGDHAITYDVPVFMNPMRWLQLIASRPGRNVYTAG 279
AsFAAL NVVLGLMPLLYHVVGFFFAVLVAALALDGTYYVIEE----FRPVDALQLVQEQV--TSLFA 250
TtFAAL DVVLPVVPPMFHVNAWCLPYAATLVGAKQVLPGPR----LDPASLVELFDGEGV--TFTAG 273
: * . * . : * : .

Teil3* PTFAYQLCLDRVT-DEQLAALDLSGWKIAGNAEPVNPAILAAFAEKFAPAGFRPESFAP 326
DptE PDFAYDMCLKRVT-DEQIAGLDLSRWRWAGNGAEPIRAATVRAFGERFARYGLRPEALTA 326
RevS PSFAYELCVRSVADTGLPAGLDLSSWRVAVNGAEPVVRWTAVADFTEAYAPAGFRPQAMCP 324
EcFAAL PPFGEYLCQRRVN-EKDIAELDLSCWRVAGIGAEPISAEQLHQFAECFRQVNFNDKTFMP 332
LpFAAL PNFAYDVCVKRIR-EEKKEGLDLSSWTAFNGAEPVREETMEHFYQAFKEFGFRKEAFYP 323
MtFAAL PNFAFEYV-ASVATPEKIAGLDLSGLTCLNGAEPIRPSTLATFAEVLAPAGLRPGAQAP 338
AsFAAL TPTHLDALAAAA--AHAGSSKLDSLRHVTFAGATMPDAVLETVHQH-----LPGEKVN 302
TtFAAL VPTVWLALADYL--ES--TGHRLKTLRRLVVGSAAPRSLIARFER-----MGVEVRQ 322
* . . : .

Teil3* IYGMAEATGYISGEVGRAP-LVRTVGLDALAHGRLAD-P-APDEEVREIVSCGTPNEACD 383
DptE GYGLAEATLFVSRSQGLHT-A--RVATAALERHEFRL-A-VPGEAAREIVSCGPVG-HFR 380
RevS GYGLAENTLKLSGSPEDRPPTLLRADAALQDGRVVPLT-GPGTDGVRLVGSGVTVPSSR 383
EcFAAL CYGLAENALAVSFSDEASGVVNEVDRDILEYQGKAVAPGAETRAVSTFVNCGKALPEHG 392
LpFAAL CYGLAEATLLVTGGTPGSYKTLTLAKEQFQDHRVHFAD-DNSPGSYKLVSSGNP--IQE 380
MtFAAL GYGLAEATVFVTAAAGDGPPKLSVDREALTRGELVLRD-GG----SELVSCGG-PCGQL 392
AsFAAL IYGTTEAMNSLYMRQPKTGTE-----MAPGFFSEVRI 334
TtFAAL GYGLTESPVVVQNFVKSHLE-----SLSEEKLTLKAKTGLPIPLVR 365
** : * :

Teil3* IRVVDPETSRVRPDGW-LGEIWI-RGRSVSPGYWSDAGP---AFAAVTA----EGEDGFL 434
DptE ARIVEPGGHRVLPPGQ-VGELVL-QGAAVCAGYQAKEETEQTFGLTLD----GEDGHWL 434
RevS VAVVDPGTGTEQPAGR-VGEIWI-NGPCVARGYHGRPAESAESFGARIA--GQEARGTWL 439
EcFAAL IEIR-NEAGMPVAERV-VGHICI-SGPSLSMSGYFGDQVSQ-----DEIAATGWL 438
LpFAAL VKLIDPDLIPPCDFDQ-VGEIWV-QSNSVAKGYWNQPEETRHAFGKIK--DDERSAIYL 436
MtFAAL VAVVDPTRTEQPDGR-VGEIWV-HGPNTAPGYWRNSERSRDTFGGELNDPGDLPAGPWM 450
AsFAAL VRIGGGVD-EIVANGE-EGELIVAASDSAFVGYLNQPEA-T-----AEKLQDGWY 381
TtFAAL LRVADEEGRVPPKDGKALGEVQL-KGPWITGGYYGNEEATR-----SALTPDGGF 414
: * . : . ** :
```


| | | |
|---------------|--|-------|
| Tei13* | RTGDLGVL-QDGELYVH GRLKETFTVHGRHLYPHDVE QELRARHPELG-KCGAVFPGRAP | 492 |
| DptE | RTGDLAAL-HEGNLHIT GRCKEALVIRGRNLYPQDIE HELRLQHPELE-SVGAAFTV--P | 490 |
| RevS | RTGDLGFL-HDGEVFFVA GRLKDVVIHQGRNFYPQDIE LSAEVSDRALHPNCAAAFALDD- | 497 |
| EcFAAL | DTGDLGYL-LDGYLYVT GRIKDLIIIRGRNIWPQDIE YIAEQ-EPEIHSGDIAIAFVTAQ- | 495 |
| LpFAAL | RTGDLGFL-HENELYVT GRIKDLIIYGNHYPQDIE FSLMHSPLHHVLGKCAAFVIOE- | 494 |
| MtFAAL | KTGDYGVV-HEGELYVT GRIKDLIIVDGRNHYPQDIE VTQEAHPAIRPDHVAFAVAVTG- | 508 |
| AsFACL | RTSDVAVWTPPEGTVRIL GRVDDMIISGGENIHPSEIE RVLGT-APGVTEVVVIGLA--DQ | 438 |
| TtFACL | RTGDIAVWDEEGYVEIK DRLKDLIKSGGEWISSVDLE NALMG-HPKVKEAAVVAIP--HP | 471 |
| | *.* . : : : * . : . * . : : * | : |
| | | |
| Tei13* | GAGGARGVVVTHE--VTN-AARDRLPELAAGLRHTVGRAFGVEVSAVLLLRPGA VLRTTS | 549 |
| DptE | AAPGTPGLMVVHE--VRTVPADDDHPALVSALRGTINREFGLDAQGIALVSRGT VLRTTS | 548 |
| RevS | --GRTERLVLLVEADGRAL-RNGGADALRARVHDAVWDRQRLRIDEIVLLRRGAL LPKTTSS | 554 |
| EcFAAL | -----EKIILQIQ--CRI-SDEERRGQLIHALAARIQSEFGVT-AAIDLPPHS LPRTSS | 546 |
| LpFAAL | --EHEYKLTVMCEVKNR-FMDDVAQDNLFNEIFELVYENHQLEVHTIVLIPLKAM PHPTTS | 551 |
| MtFAAL | --AETERLVVVAERNRRVPLGRLDVDEVAAVRGAVNIEHEMSVHDFVLEPGG VSRTSS | 566 |
| AsFACL | RWQG-SVTACVVPRGELT----SADALDTFCRSSELADFKRPK---RYFILDQ LPKNAL | 490 |
| TtFACL | KWQE-RPLAVVVPRGK-P----TPEELNEHLLKAGFAKWQLPD---AVVFAEE LPRTSA | 522 |
| | : | : : : |
| | | |
| Tei13* | GK IRRSAMRELFHEGKLTALYQHPPAP-----RELPYVGDPSPATRVTSLSRP | 598 |
| DptE | GK VRRGAMRDLCLRGELNIVHADKGWHAAGTAGEDIAPTDAHPPHPA----- | 597 |
| RevS | GK VQRRLLARSRYLDGEFGPAPAREA----- | 579 |
| EcFAAL | GK PARAEAKKRYQKAYAAASLNQESLA----- | 573 |
| LpFAAL | GK IRRNFCRKHLLDKTLPIVATWQLNKIEE----- | 581 |
| MtFAAL | GK IARAATRQRYLDGGLPTTAARLASRG----- | 594 |
| AsFACL | NK VLRRQLVQQVSS----- | 504 |
| TtFACL | GK FLKRALREQYKNYYGGA----- | 541 |
| | * : | : |

Figure S8. Comparative sequence alignment of the Tei13* with well-characterized fatty acyl-AMP ligases (FAALs) and fatty acyl-coenzyme A ligases (FACLs) based on an analysis from *J. Mol. Biol.* **2011**, *406*, 313. The acyl-activating enzyme (AAE) consensus motif [LIVMFY]-X-X-[STG]-[STAG]-G-[ST]-[STEI]-[SG]-X-[PASLIVM]-[KR] (*Plant Physiol.* **2003**, *132*, 1065) is highlighted in bold, and additional motifs are color-coded as described in *J. Mol. Biol.* **2011**, *406*, 313: yellow = gate motif of adenylation active site; green = insertion motif characteristic of FAALs; cyan = hinge region between domains; red = active site loop motif. Proteins used in alignment: DptE = daptomycin pathway acyl-AMP ligase from *Streptomyces roseosporus*; RevS = reveromycin pathway FAAL from *Streptomyces* sp. SN-593; EcFAAL = *Escherichia coli* FAAL; LpFAAL = *Legionella pneumophila* FAAL; MtFAAL = *Mycobacterium tuberculosis* FAAL; AsFAAL = *Alcaligenes* sp. FAAL; TtFAAL = *Thermus thermophiles* FAAL.

| | Tei13* | DptE | RevS | EcFAAL | LpFAAL | MtFAAL | AsFAAL | TtFAAL |
|--------|--------|-------|-------|--------|--------|--------|--------|--------|
| Tei13* | 100 | 42.02 | 37.12 | 29.58 | 31.96 | 34.1 | 19.75 | 21.81 |
| DptE | 42.02 | 100 | 37.25 | 29.43 | 32.74 | 36.22 | 20.37 | 21.76 |
| RevS | 37.12 | 37.25 | 100 | 31.39 | 35.07 | 40.63 | 19.29 | 19.33 |
| EcFAAL | 29.58 | 29.43 | 31.39 | 100 | 30.36 | 30.48 | 20.37 | 19.49 |
| LpFAAL | 31.96 | 32.74 | 35.07 | 30.36 | 100 | 34.51 | 17.22 | 17.72 |
| MtFAAL | 34.1 | 36.22 | 40.63 | 30.48 | 34.51 | 100 | 18.72 | 21.62 |
| AsFAAL | 19.75 | 20.37 | 19.29 | 20.37 | 17.22 | 18.72 | 100 | 26.31 |
| TtFAAL | 21.81 | 21.76 | 19.33 | 19.49 | 17.72 | 21.62 | 26.31 | 100 |

Figure S9. Percentage identity matrix of proteins shown in Figure S8.

```

RifR      MHRPEAEKWLRRFERAPDARARLVCLPHAGGSASFFFPLAKALAPAVEVLAVQYPGRQDR 60
tei30*    MPVP----WFSAPRPLAAPRLRLVCFPYAGGNAATYRSWAGLLPPGVELVAALLPGRAER 56
SrfA      -----MSQLFKSFD--ASEKTQLICFPFAAGYSASFRPLHAFLLQGECEMLAAEPPGHGTN 53
          :      .      : :*:*:*.*** :: : .      *      *::*.  **: .

RifR      RHEPPVDSIGGLTNRLLLEVLRP-FGDRPLALFGHSMCAIIGYELALRMPEAGLPAPVHLF 119
tei30*    LDEPPLVDLDVLLSELVAAAGPLLGPVPLILFGHSLGATVAYEFGRALATEHGCVPAALL 116
SrfA      -QTSAIEDLEELT-DLYKQELNLRPDRPFVLFHSMCGMITFRLAQKLEREG-IFPQAVI 110
          . .:. :. *      *      * : *****.*. : :.:. :      *      :.

RifR      ASGRRAPSRYRDDDVRGASDERLVAELRKLGGSDAAMLADPELLAMVLPAIRSDYRAVET 179
tei30*    VSGAPAPPVRRRTGRGLSDDDLERILGKRDTLDPAGWLT-AELKPFVFPALRADLQLLDG 175
SrfA      ISAIQPPHIQRKK-VSHLPDDQFLDHI IQLGGMPAELVENKEVMSFFLPSFRSDYRALEQ 169
          *.  .*      *      .*: : : : .      *      :      * : .:.*:***: : :.

RifR      YRHEPGRRVDCPVTVFTGDHDPRVSVGEARAWEEHTTGPADLRVLPGGHFFLVDQAA-PM 238
tei30*    YRWRPGPLPGVPVVAFGGDA DPVSAADLRAWQRCTTGPARTHVLAGDHFFIAHQPFREL 235
SrfA      FELYDLAQIQSPVHVFNG-LDDKKCIRDAEGWKKWAK-DITFHQFDGGHMFLLSQTE-EV 226
          :.      ** .* *      *      . : ..*:. :. : : *.**:* * . :

RifR      IATMTEKLAGPALTGSTGGNS 259
tei30*    LAATVGEFAASPIAR----- 250
SrfA      AERIFAILNQHPPIQP----- 242

```

Figure S10. Comparative sequence alignment of the Tei30* with well-described type II thioesterase RifR from *Amycolatopsis mediterranei* and SrfA from *Bacillus subtilis*. Residues of the catalytic triad are highlighted in yellow, amino acids important for the activity of the catalytic center are colored in green, and residues that differ in proteins are depicted in red. Fully conserved residues are denoted with asterisk, amino acids with strongly similar properties – with colon and weakly similar – with period.