

Supporting Information

The synthesis of the repeating unit of capsular polysaccharide *Staphylococcus aureus* type 5 to study chemical activation and conjugation of native CP5

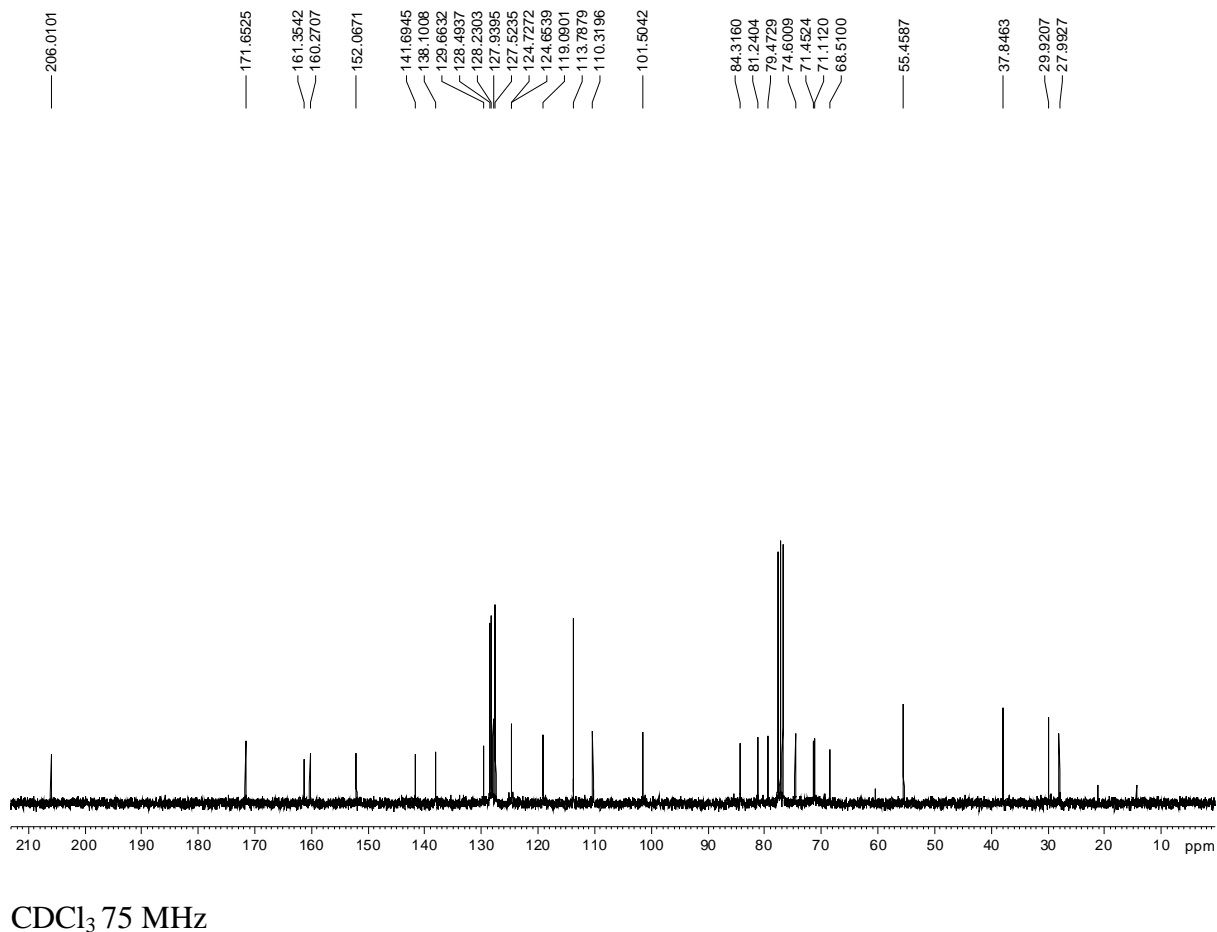
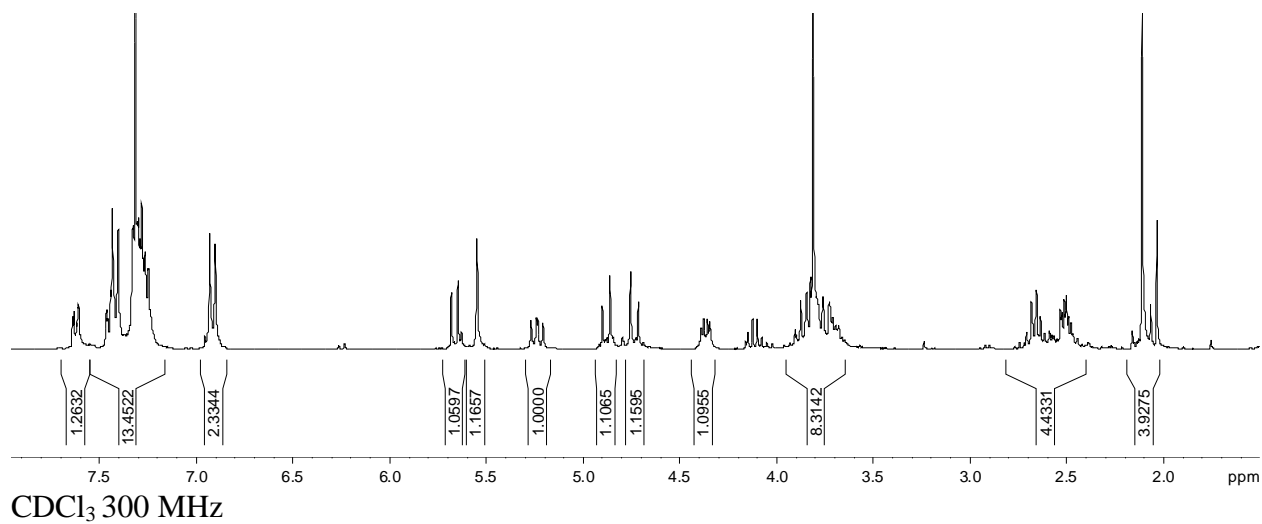
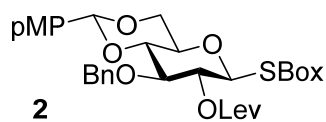
Jagodige P. Yasomanee,¹ Satsawat Visansirikul,¹ Papapida Pornsuriyasak,¹ Melissa Thompson,²
Stephen A. Kolodziej,^{3,*} and Alexei V. Demchenko^{1,*}

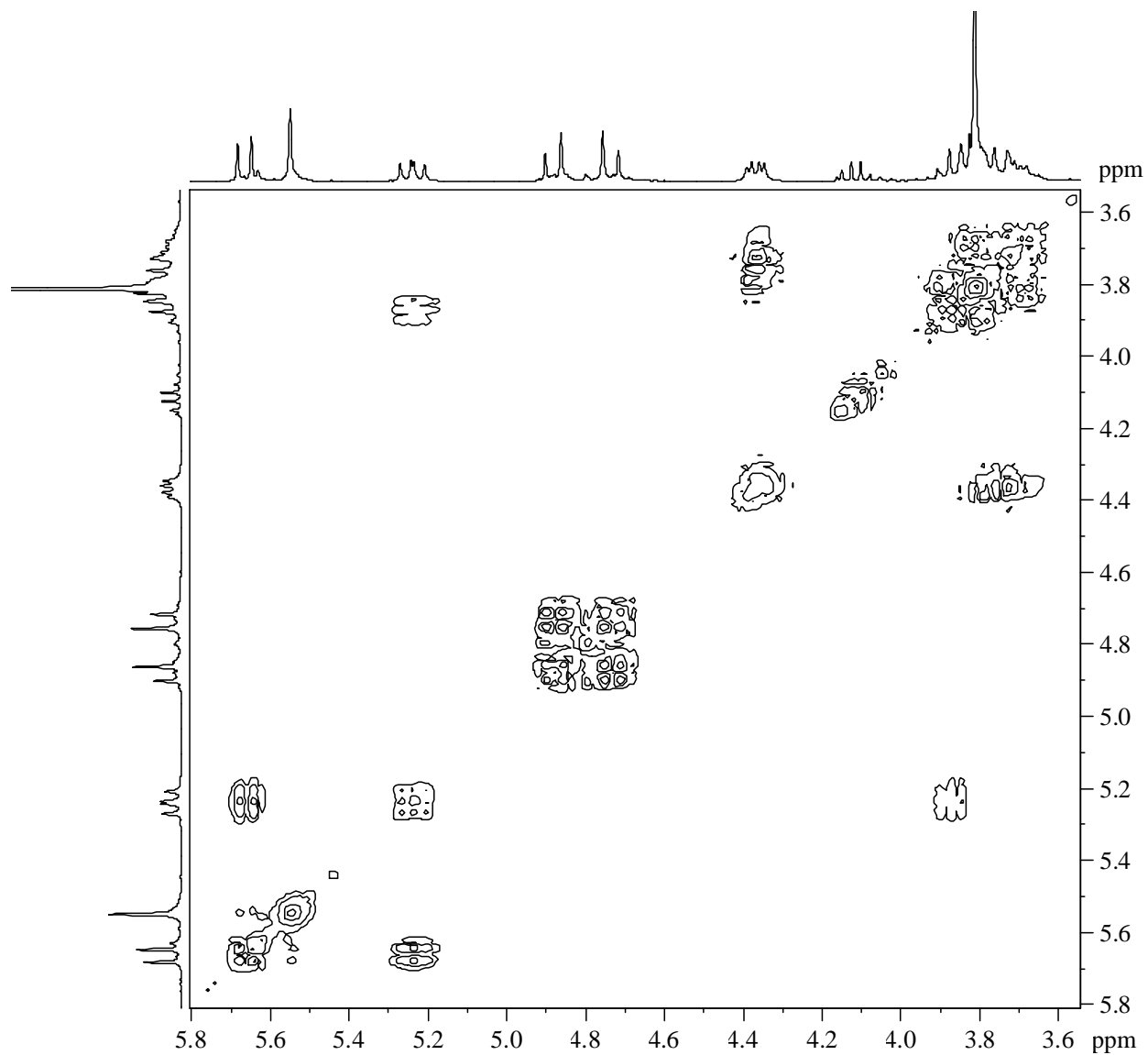
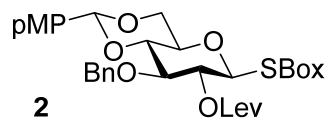
¹ - *Department of Chemistry and Biochemistry, University of Missouri – St. Louis, One
University Boulevard, St. Louis, MO 63121, USA; e-mail: demchenko@umsl.edu*

² - *Analytical R&D, Biotherapeutics Pharmaceutical Sciences, Pfizer, Inc., 700 Chesterfield
Parkway W, Chesterfield, MO 63017, USA*

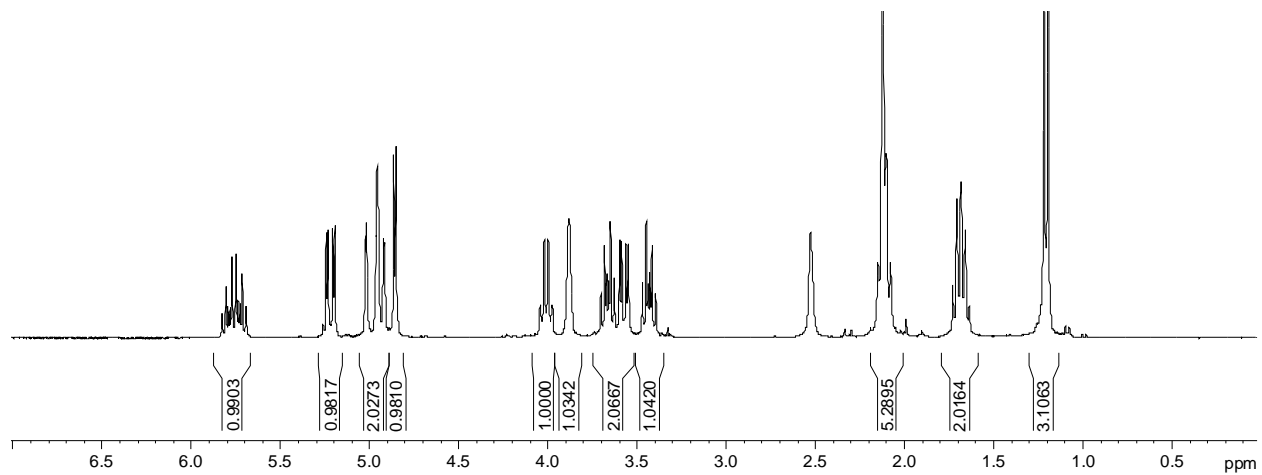
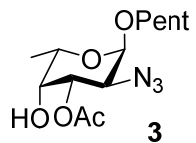
³ - *Bioprocess R&D, Biotherapeutics Pharmaceutical Sciences, Pfizer, Inc., 700 Chesterfield
Parkway W, Chesterfield, MO 63017, USA; email: steve.a.kolodziej@pfizer.com*

NMR Spectra

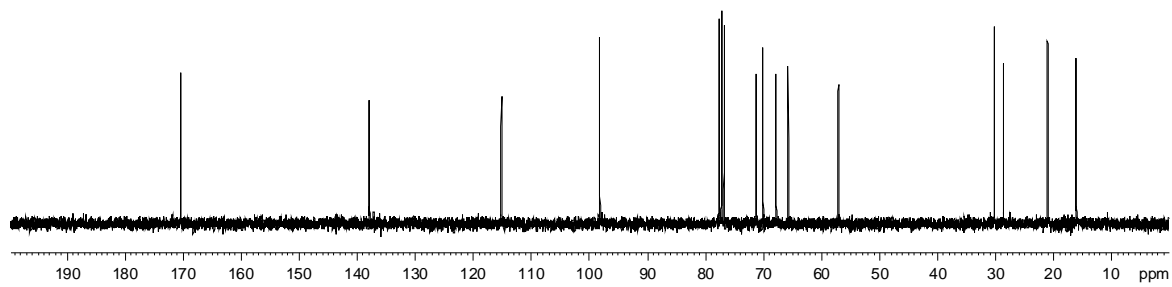




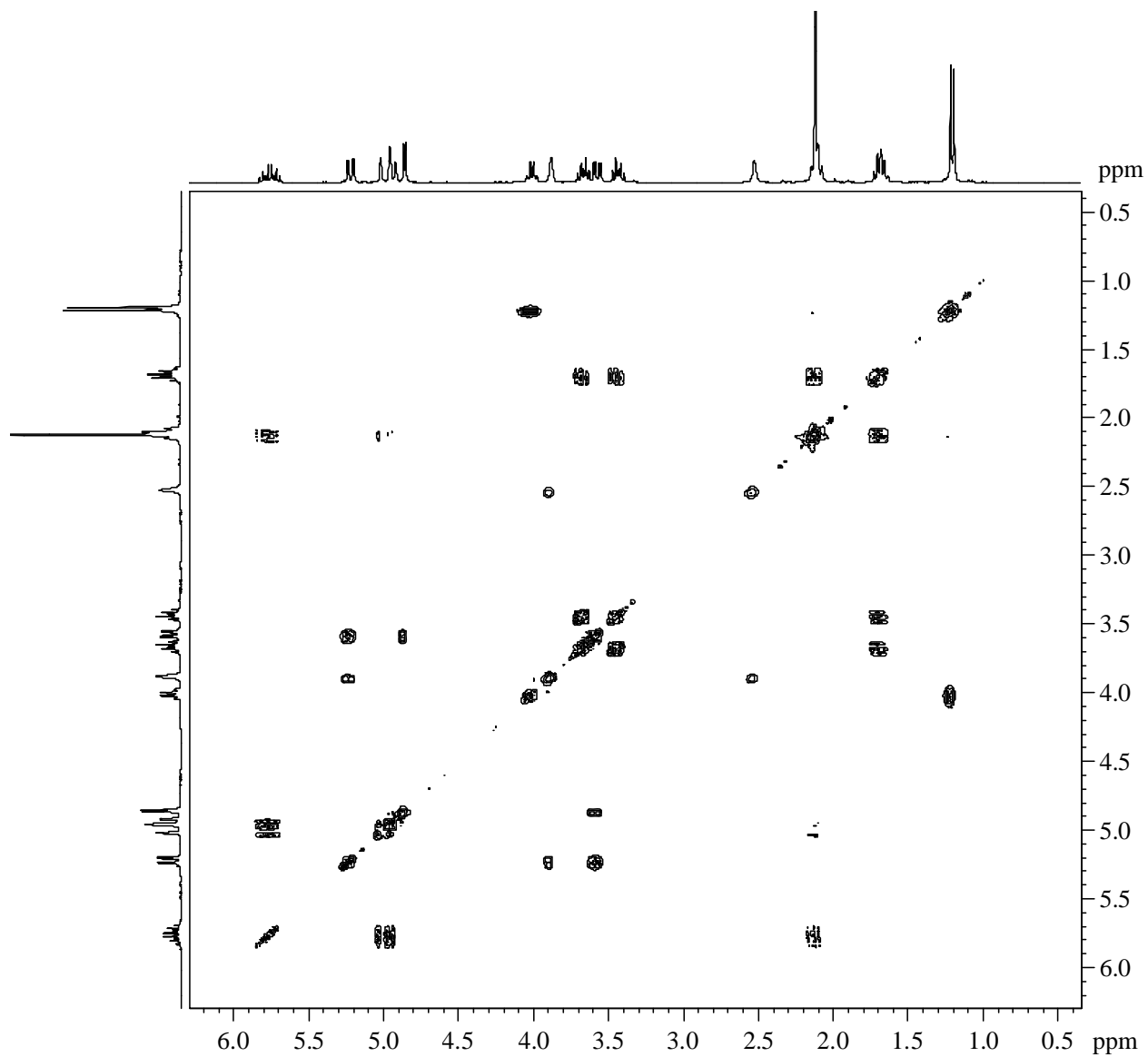
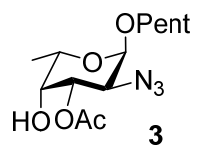
CDCl_3 300 MHz



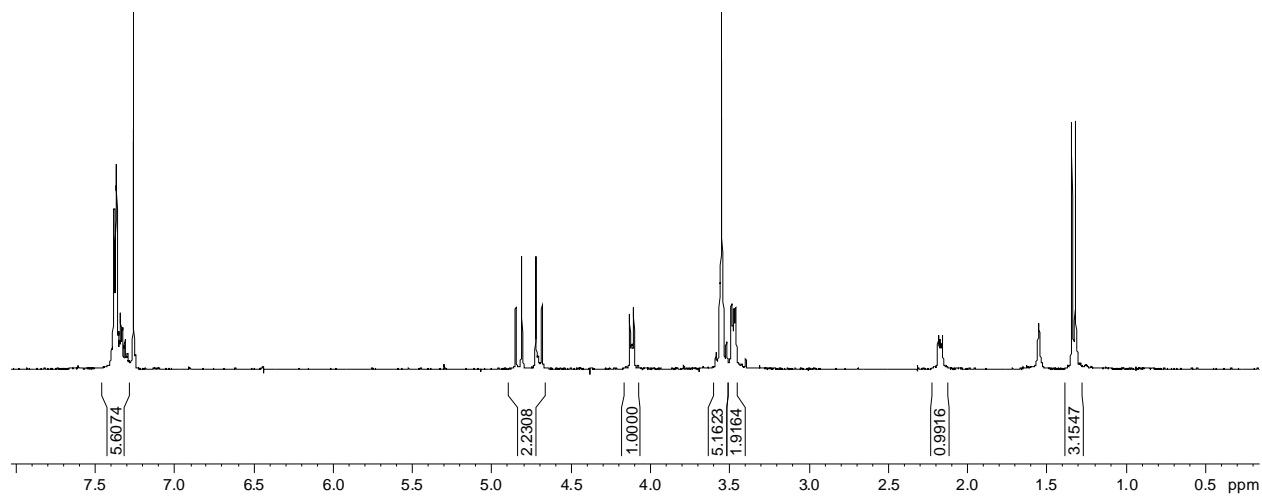
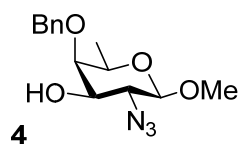
CDCl₃ 300 MHz



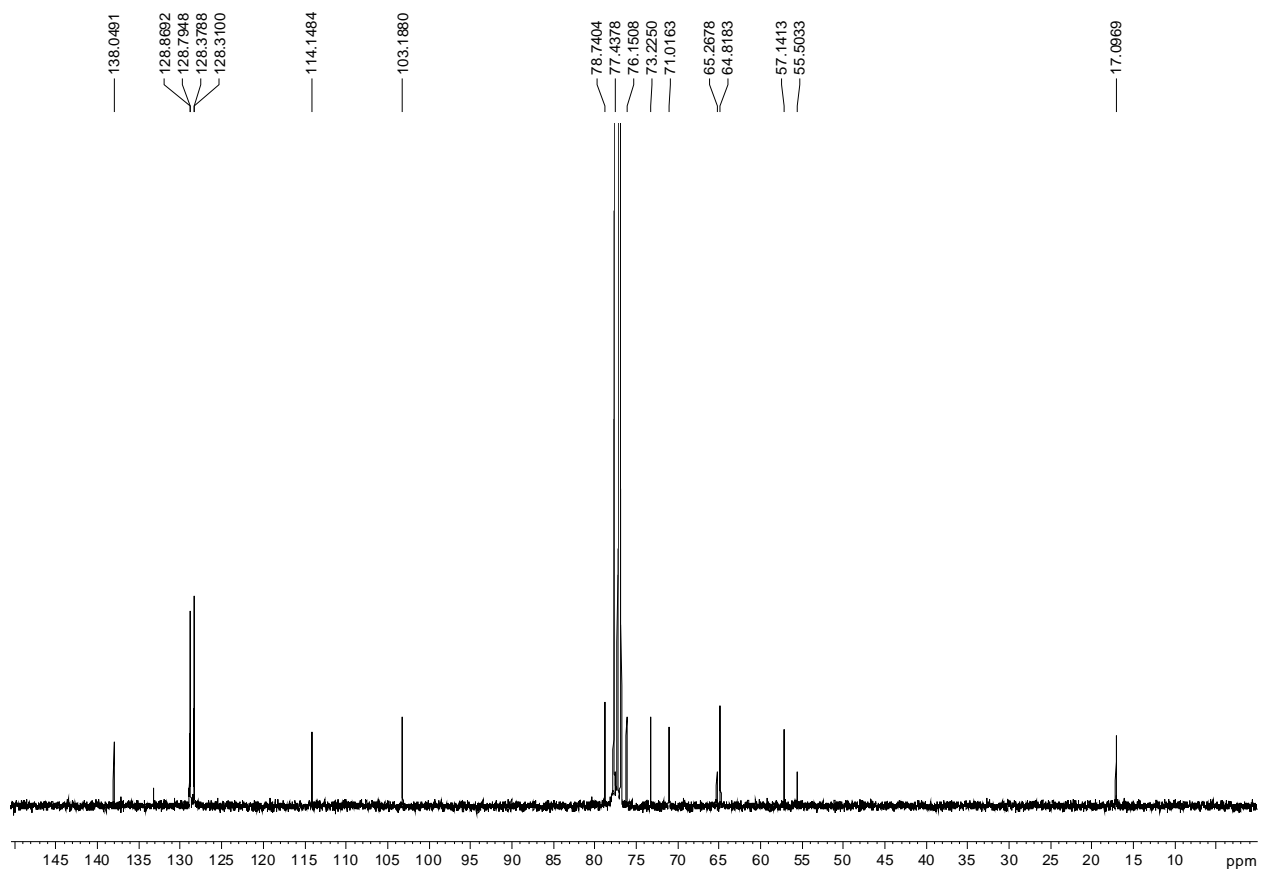
CDCl₃ 75 MHz



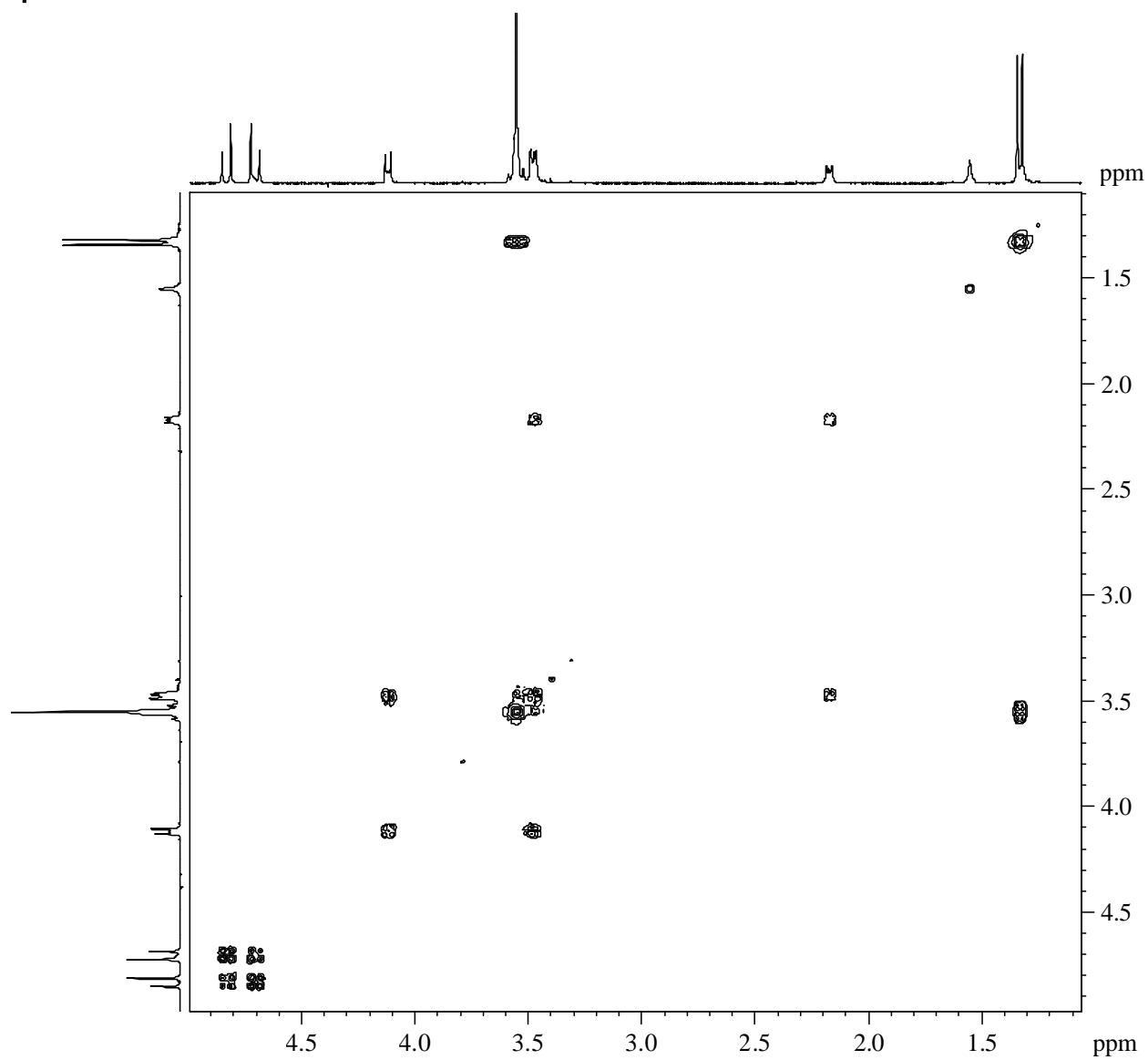
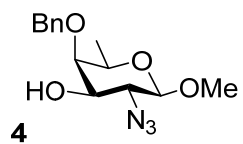
CDCl₃ 300 MHz



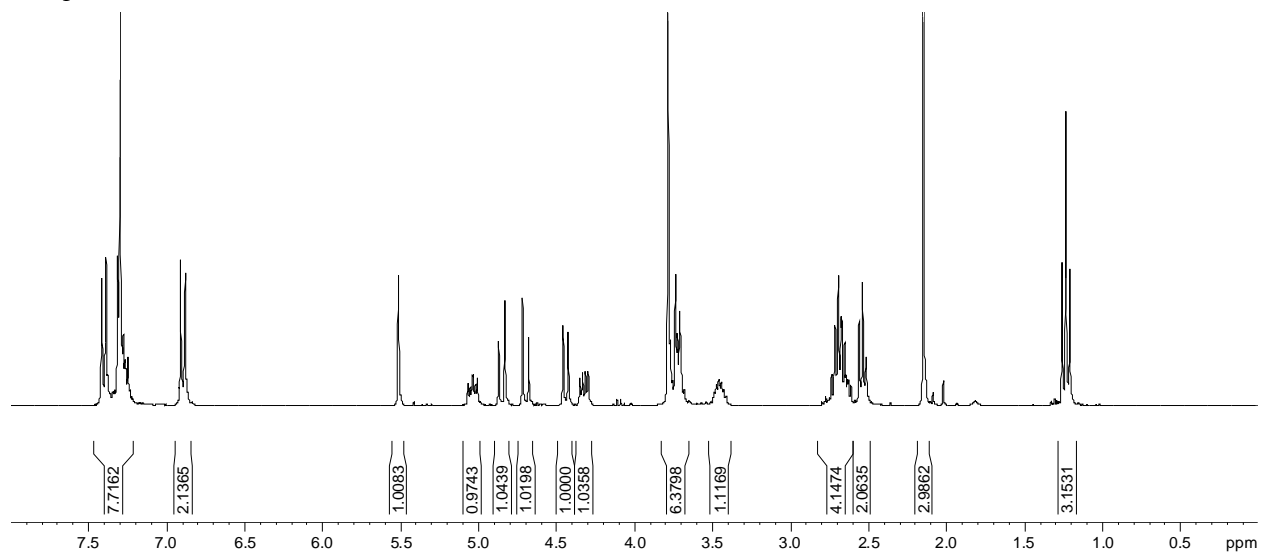
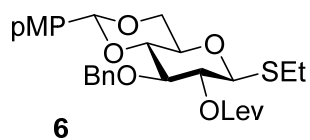
CDCl₃ 300 MHz



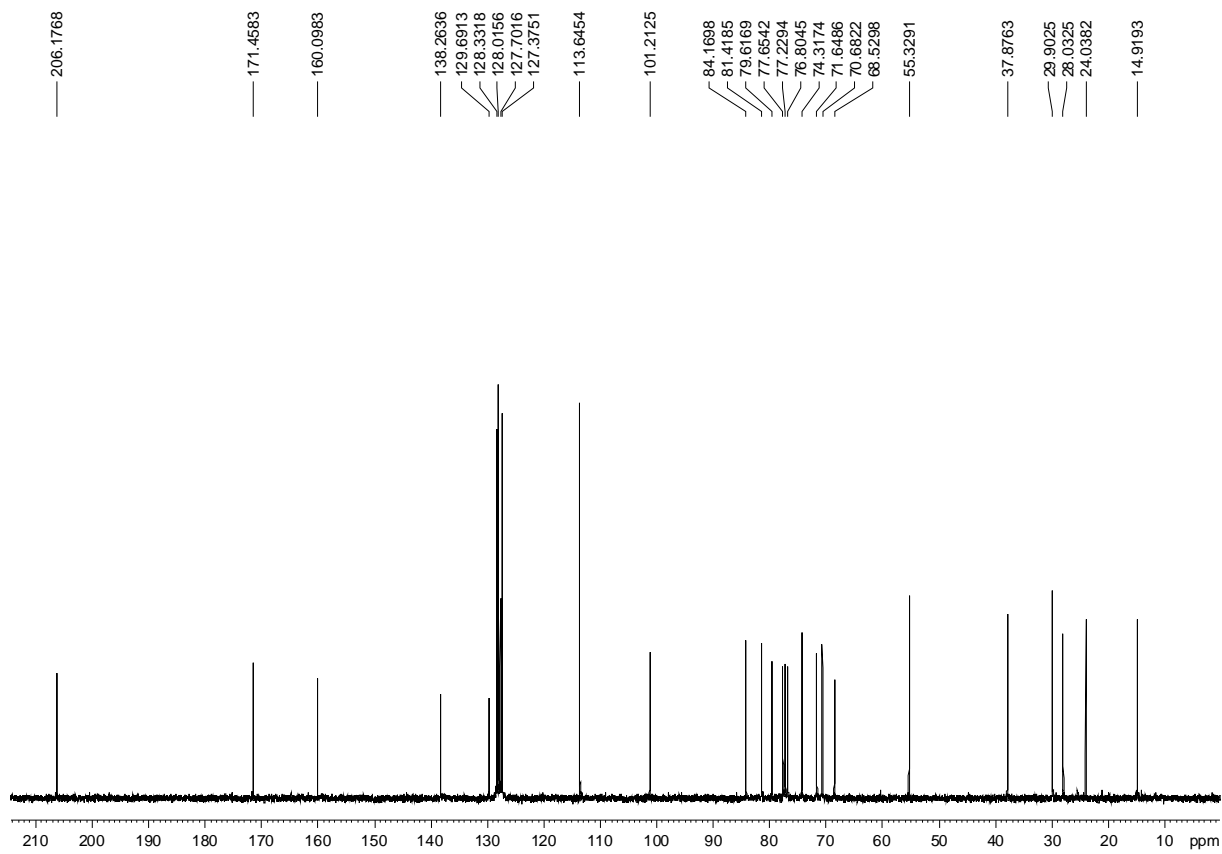
CDCl₃ 75 MHz



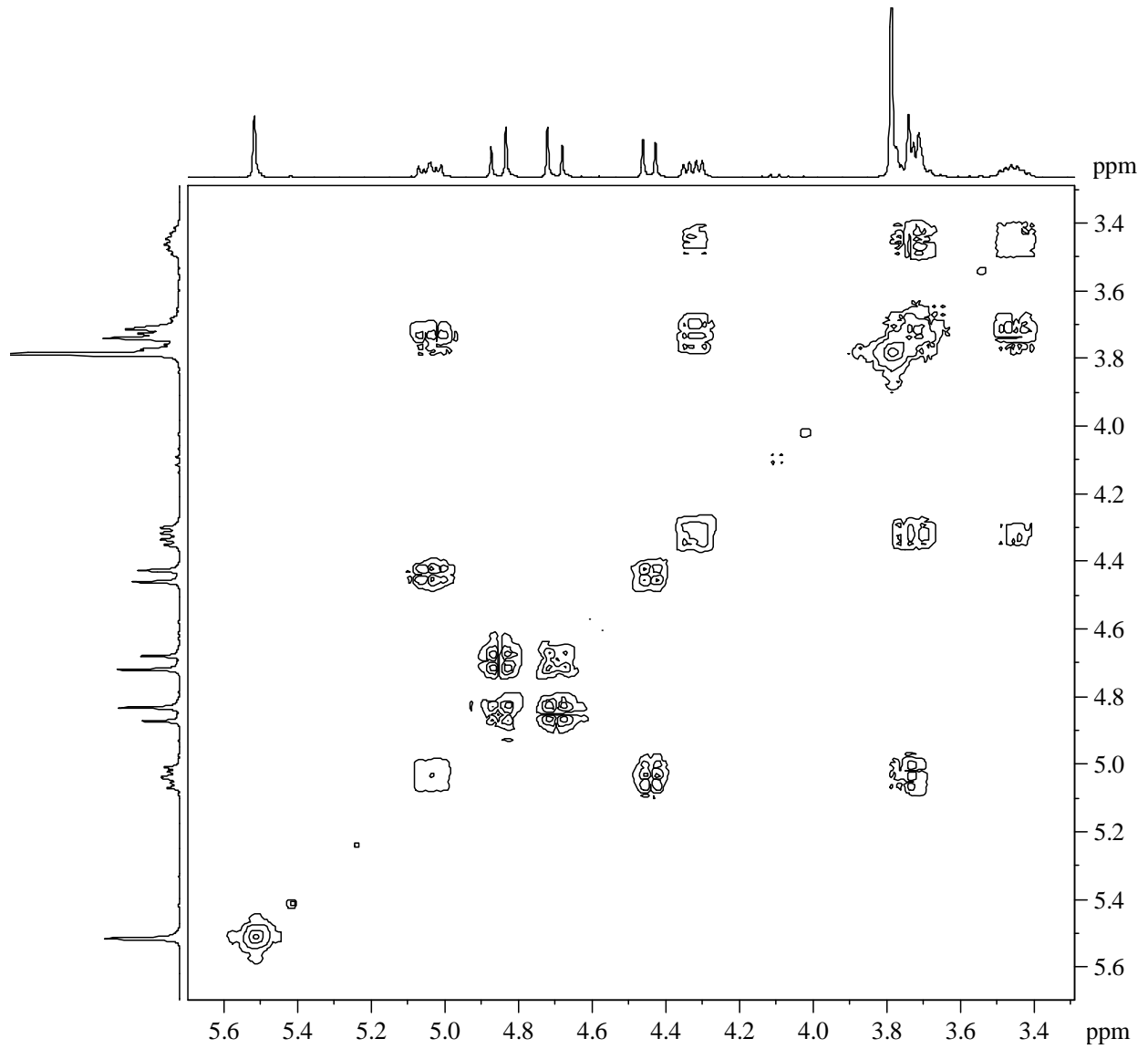
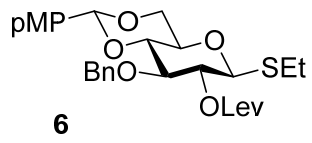
CDCl₃ 300 MHz



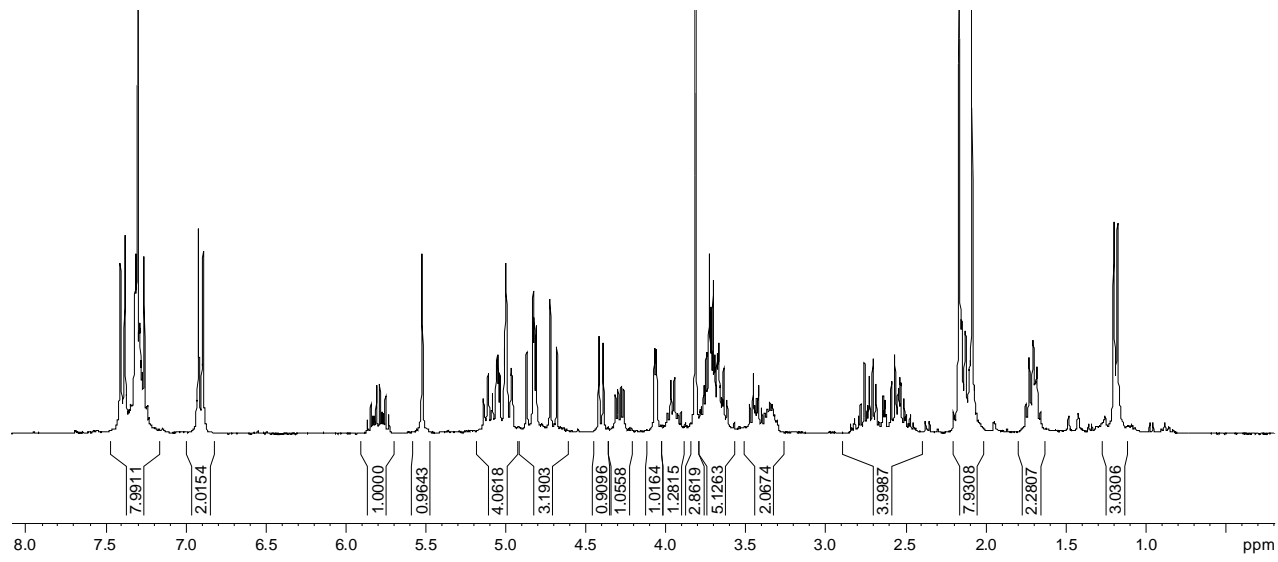
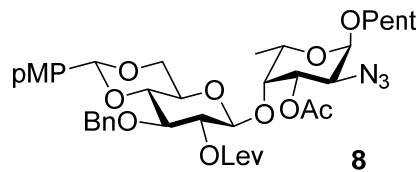
CDCl_3 300 MHz



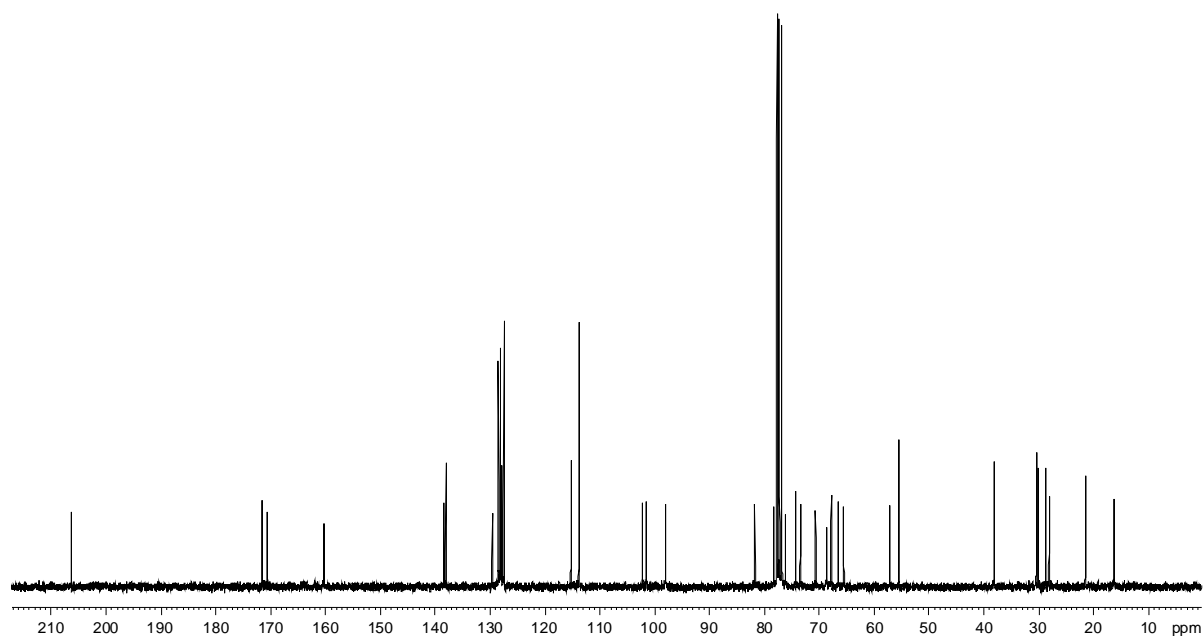
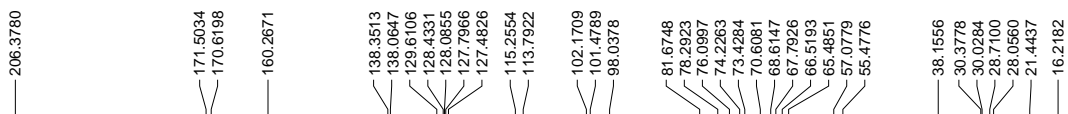
CDCl_3 75 MHz



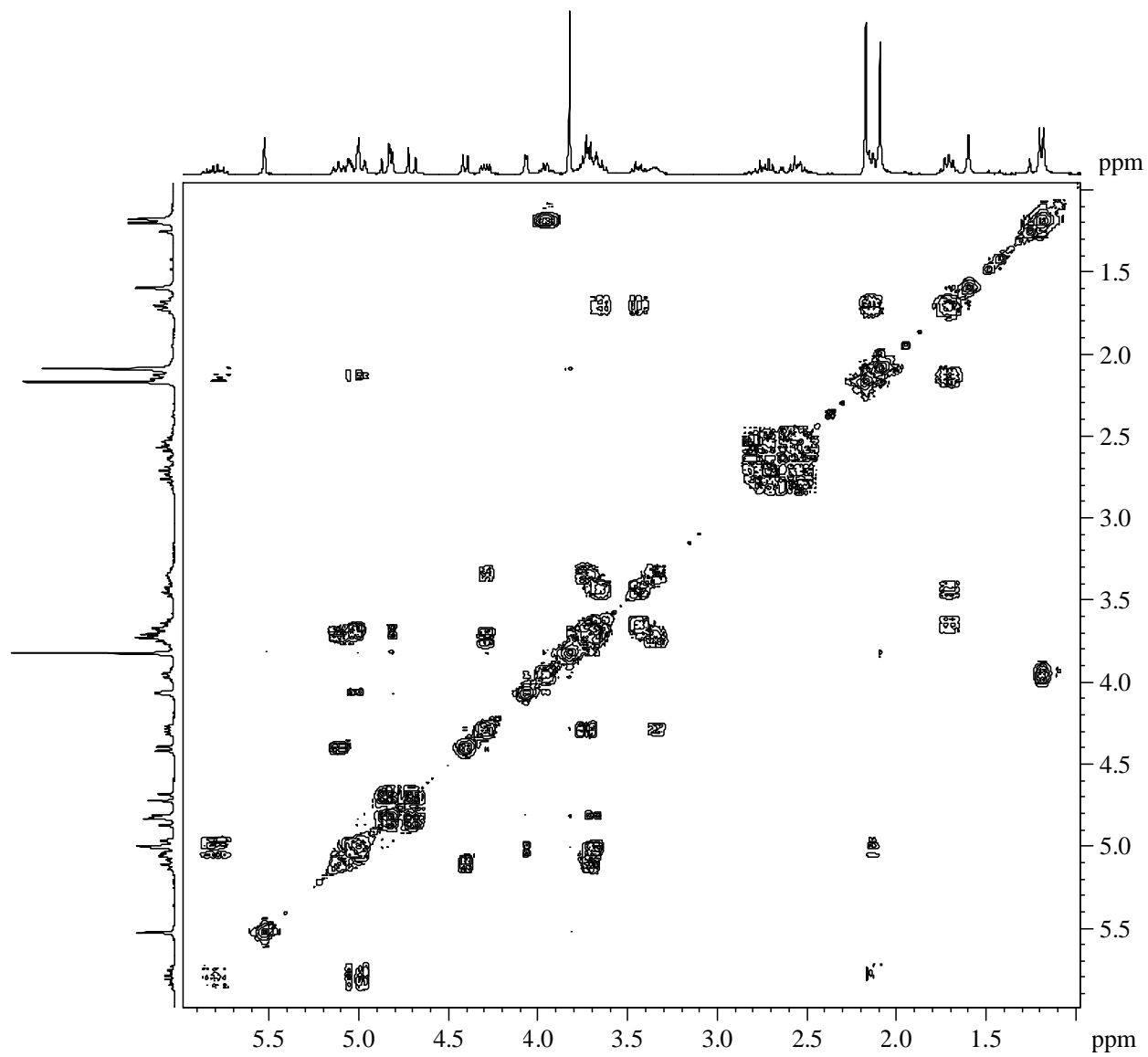
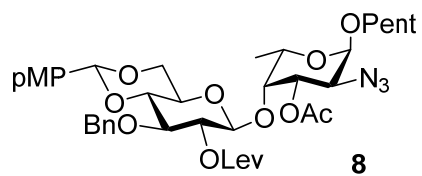
CDCl₃ 300 MHz



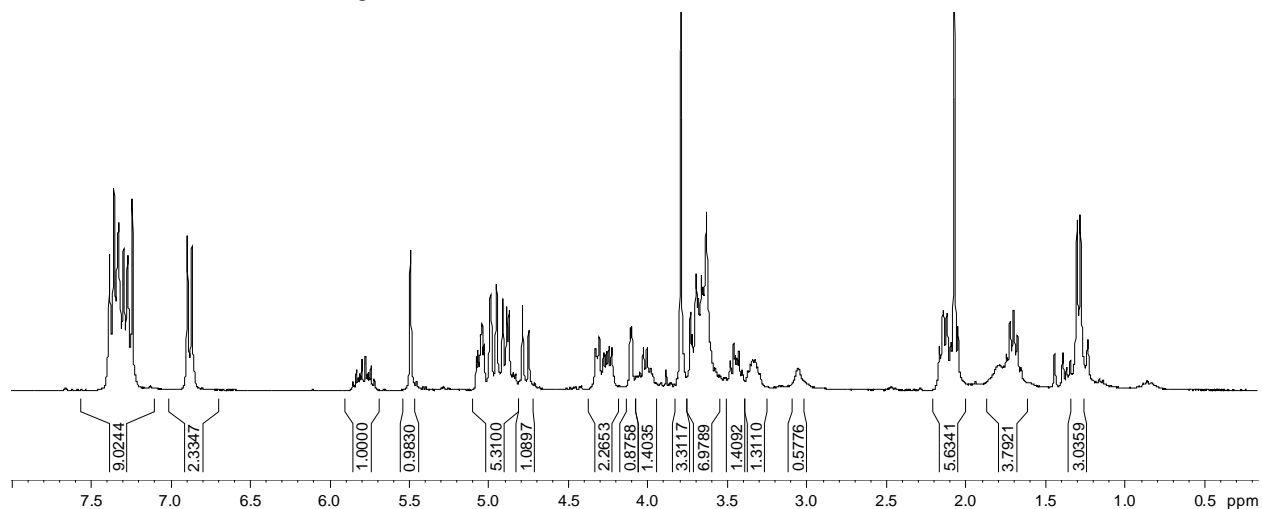
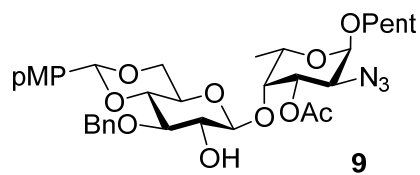
CDCl₃ 300 MHz



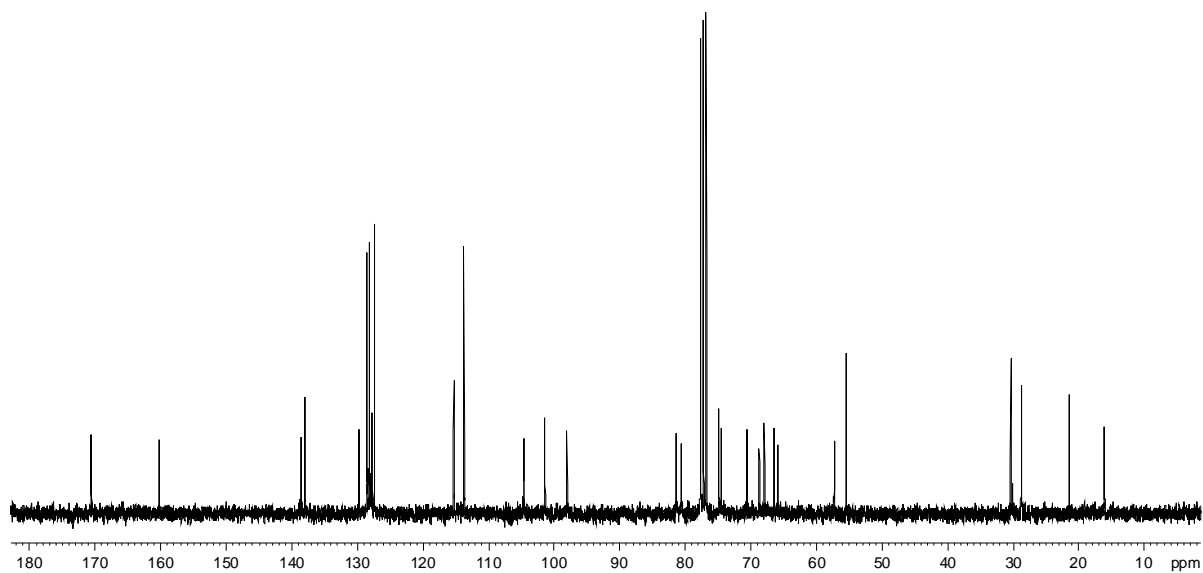
CDCl₃ 75MHz



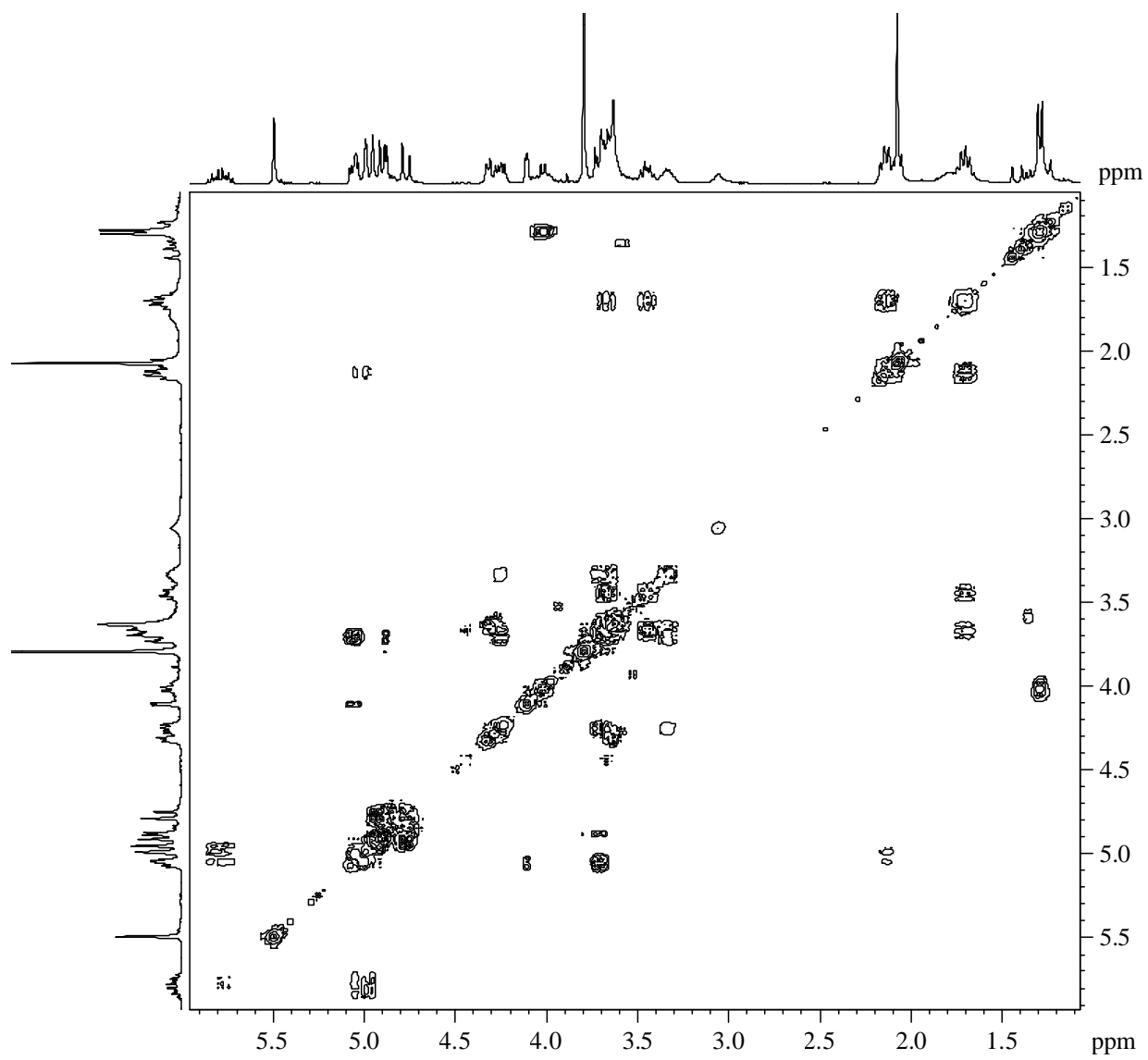
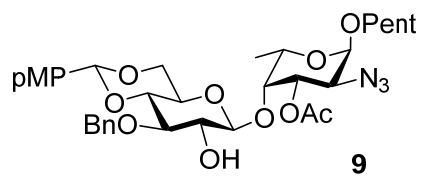
CDCl₃ 300 MHz



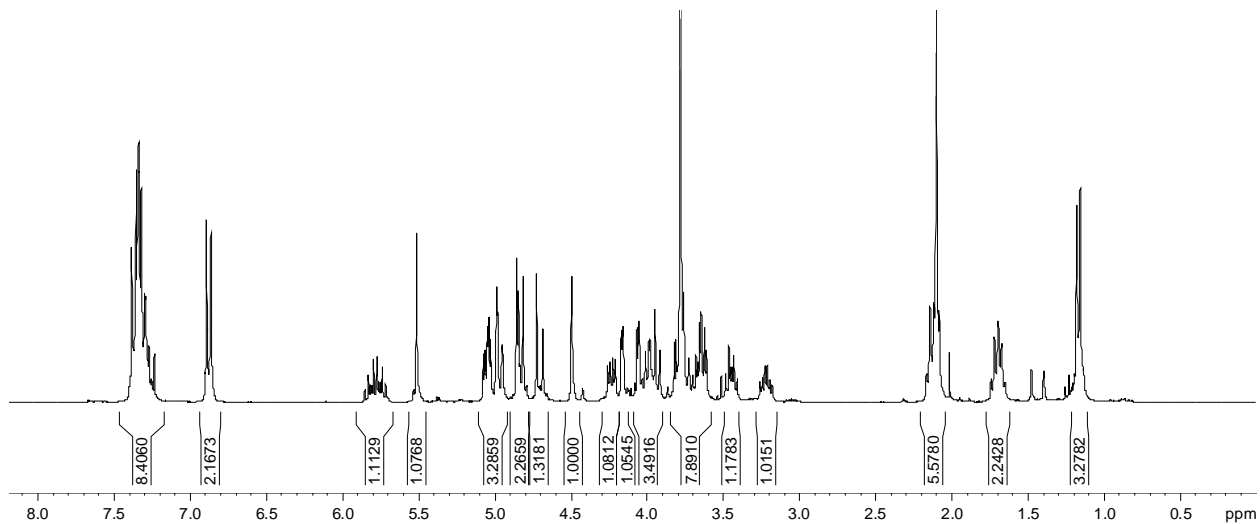
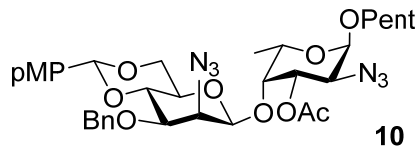
CDCl₃ 300 MHz



CDCl₃ 75 MHz



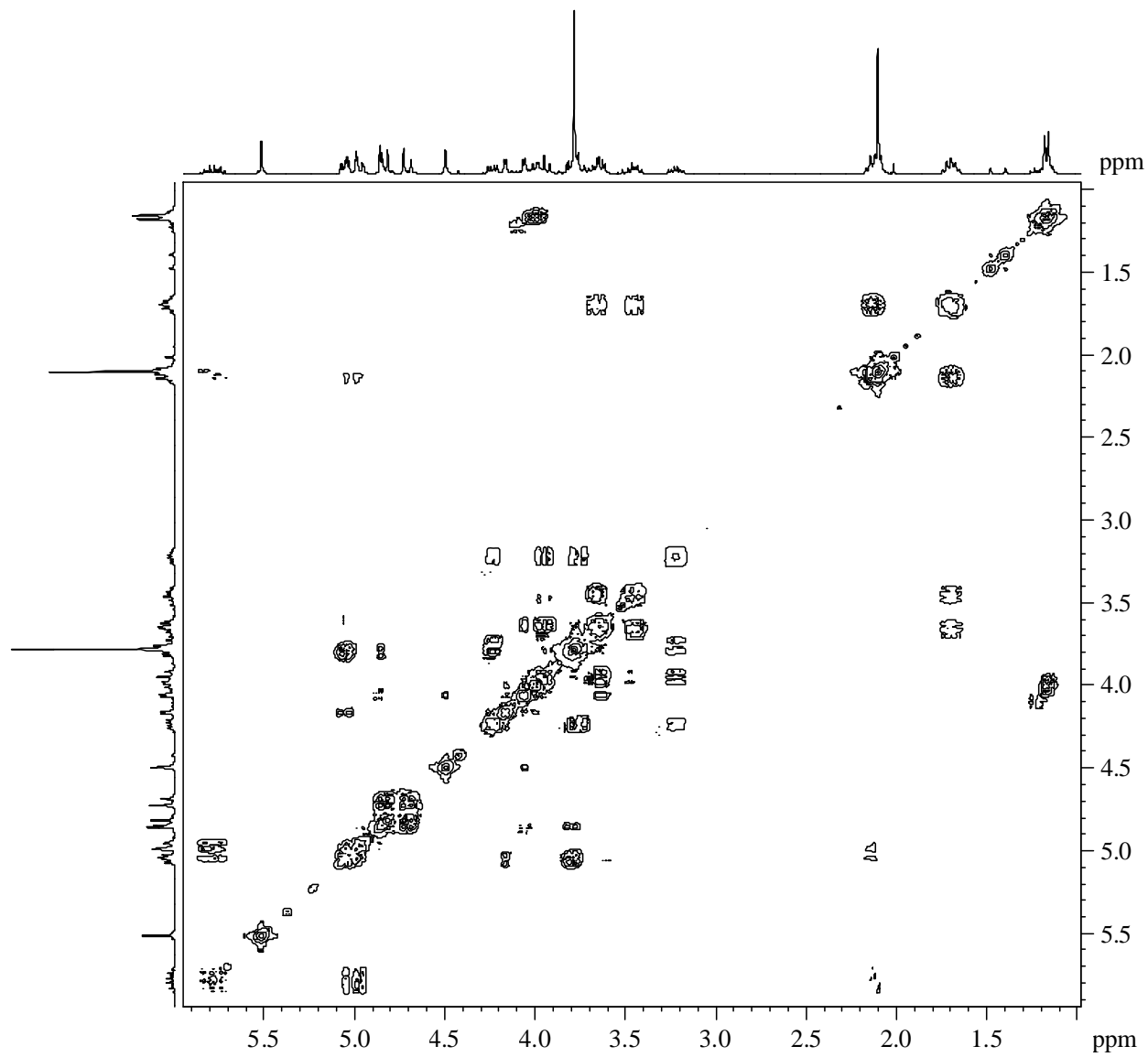
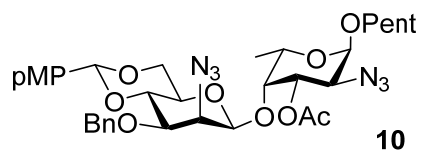
CDCl₃ 300 MHz



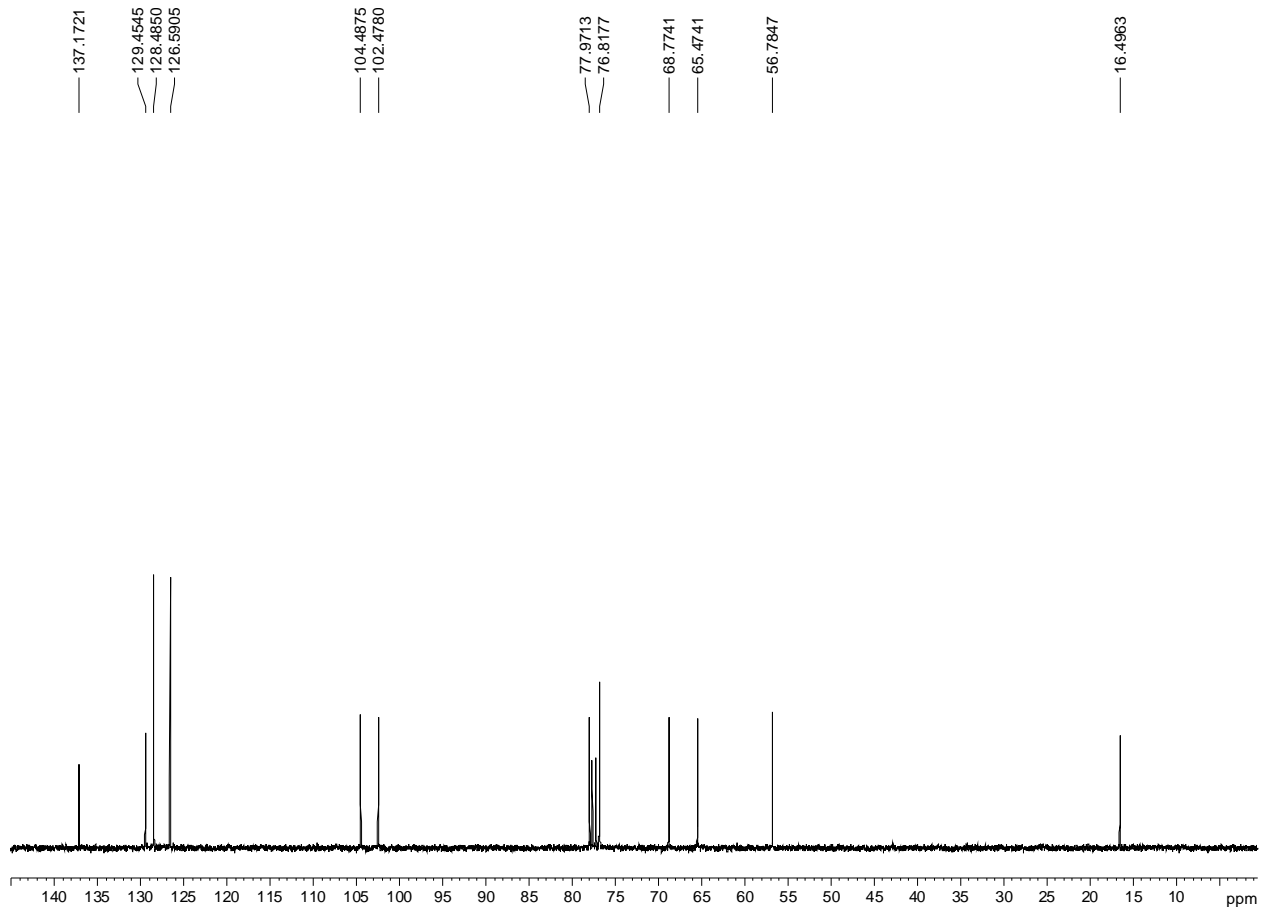
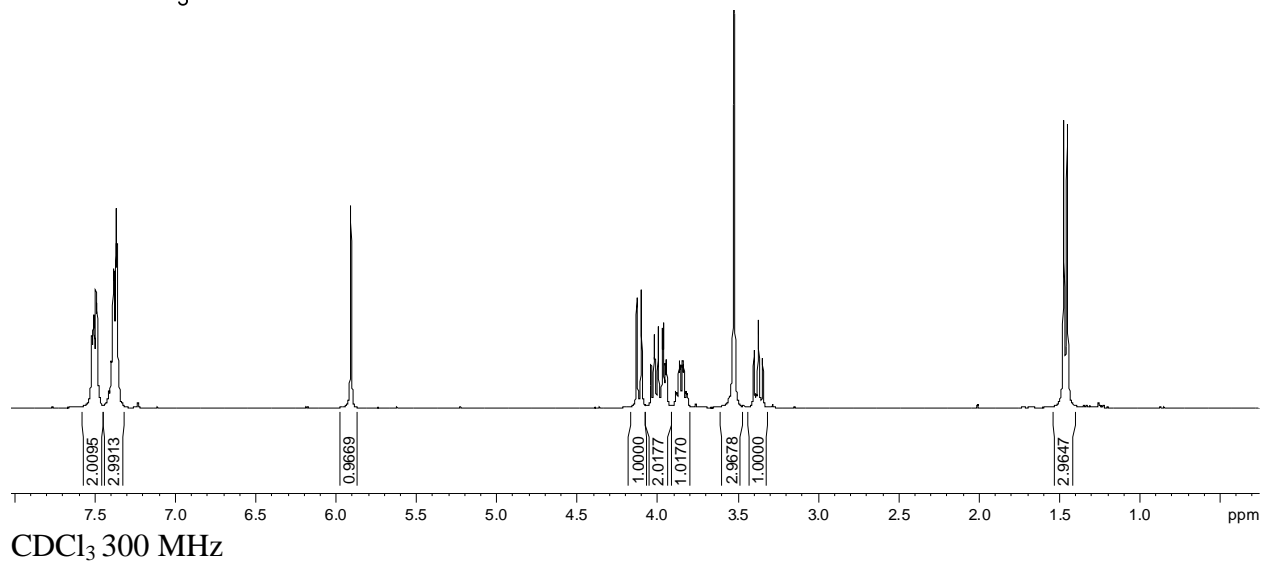
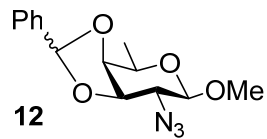
CDCl_3 300 MHz

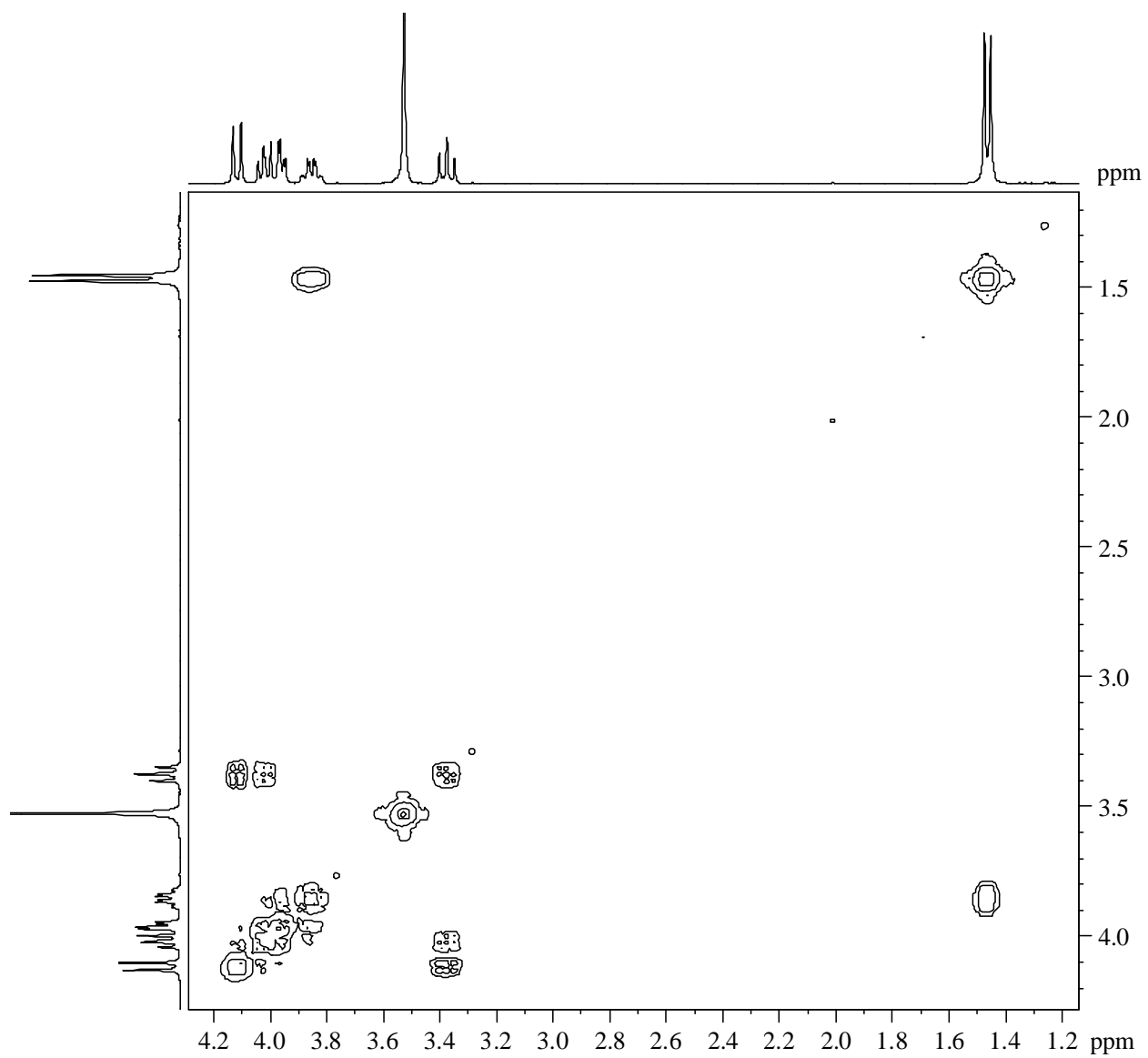
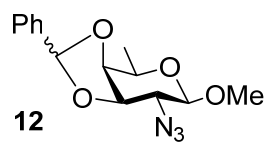


CDCl_3 75 MHz

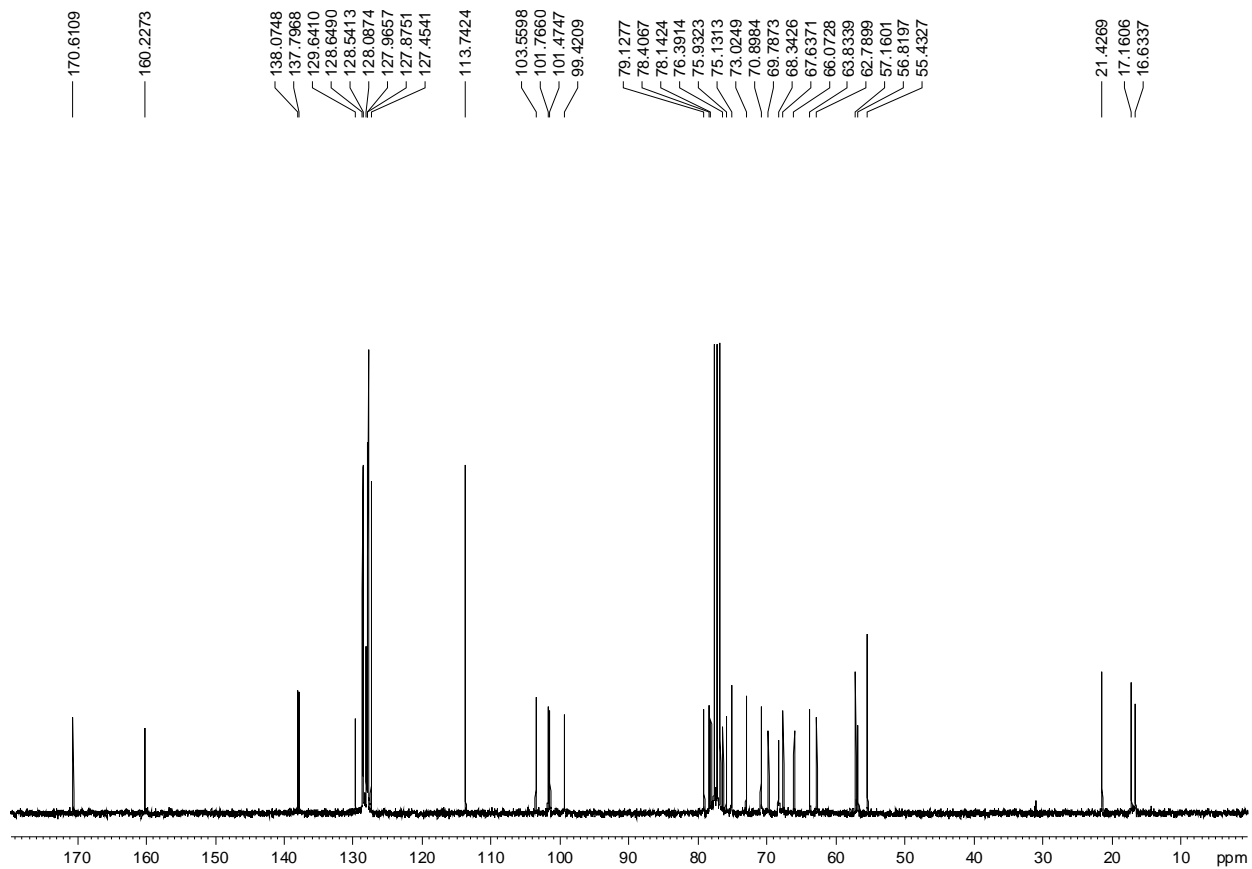
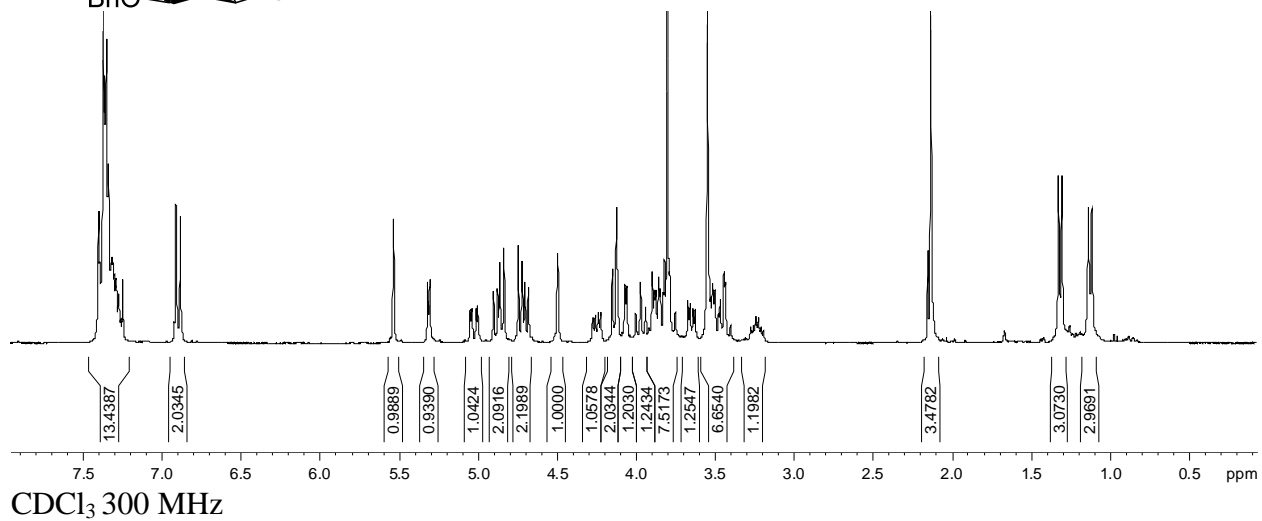
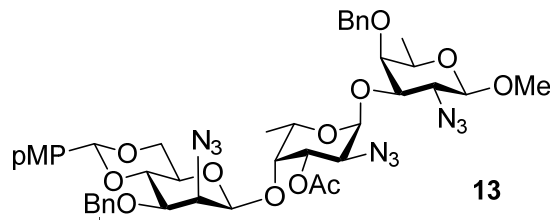


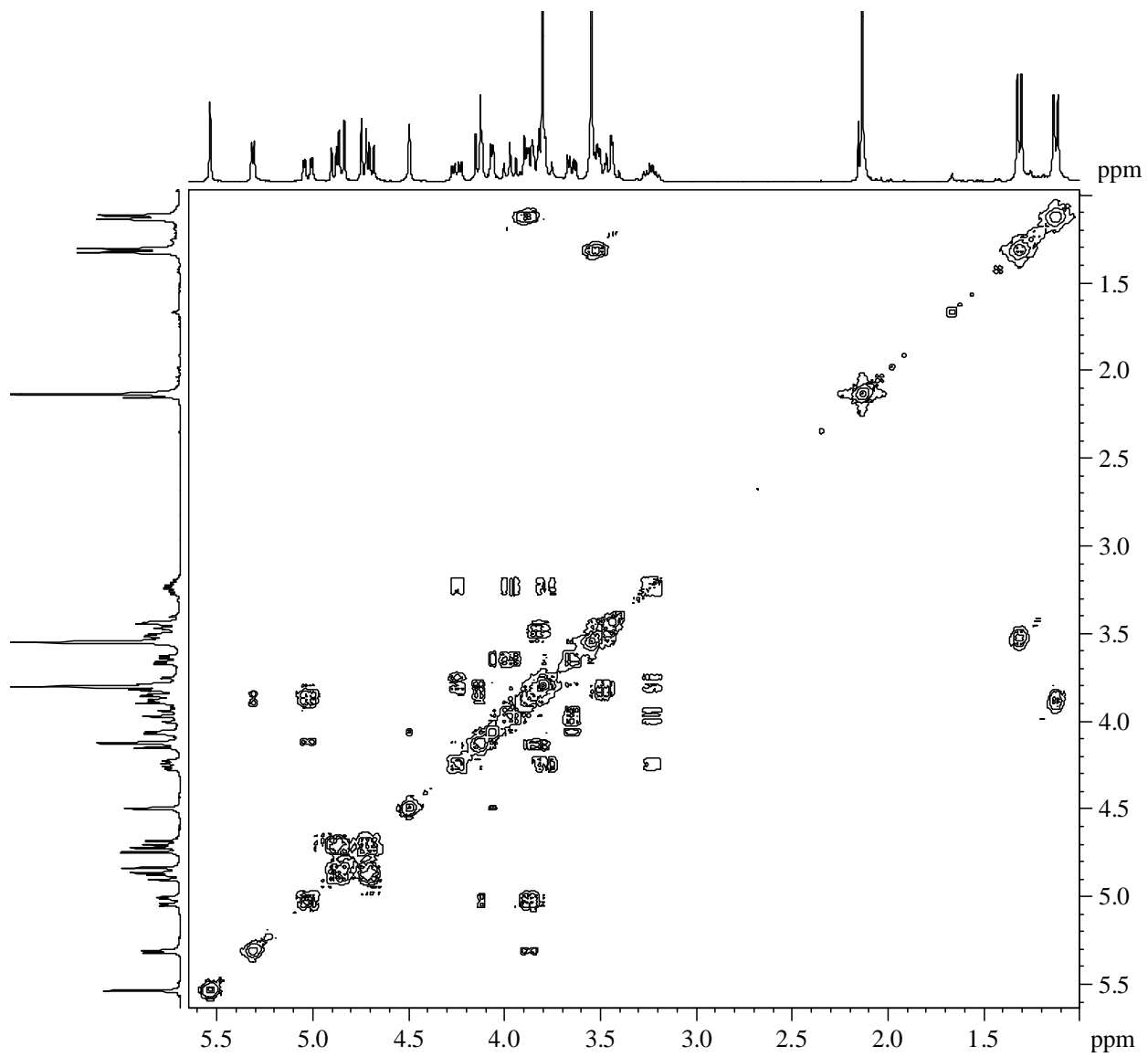
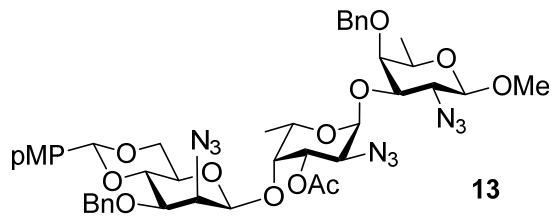
CDCl₃ 300 MHz



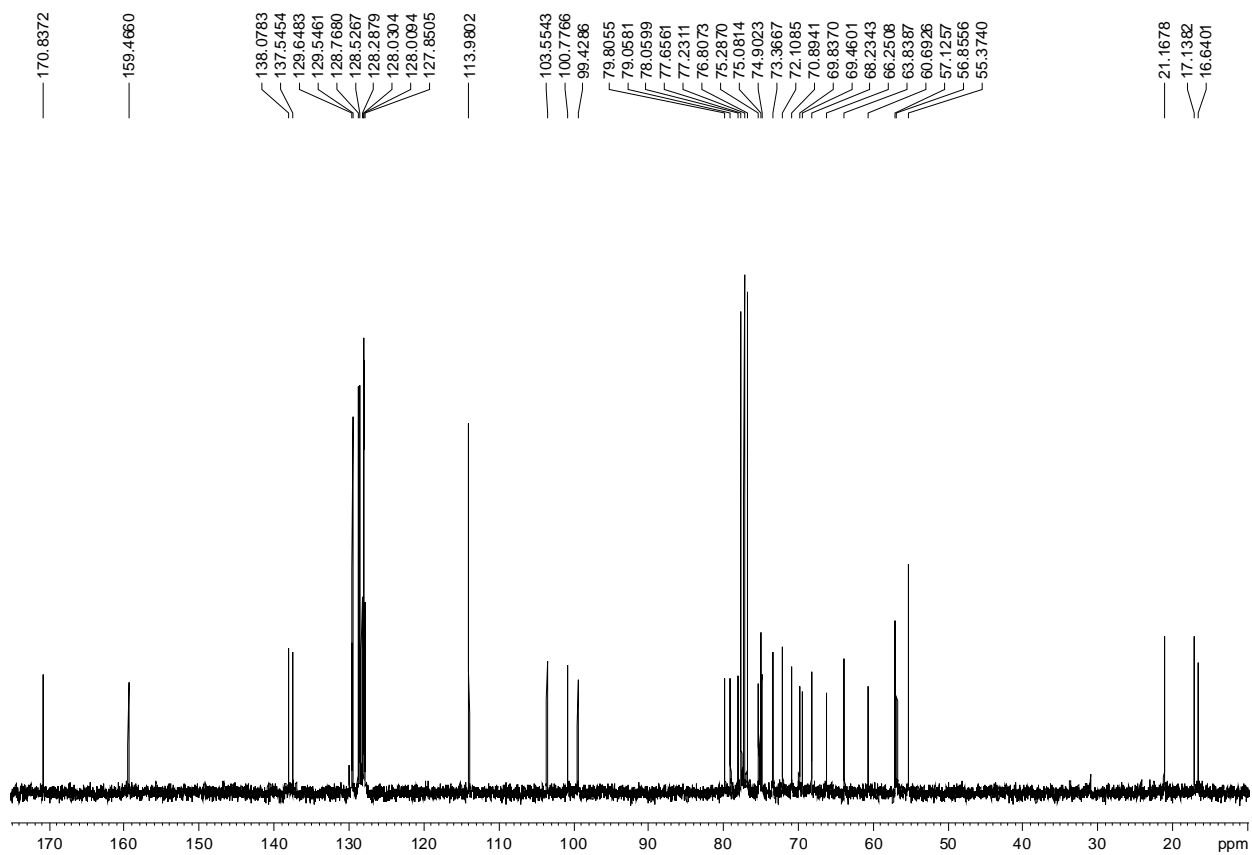
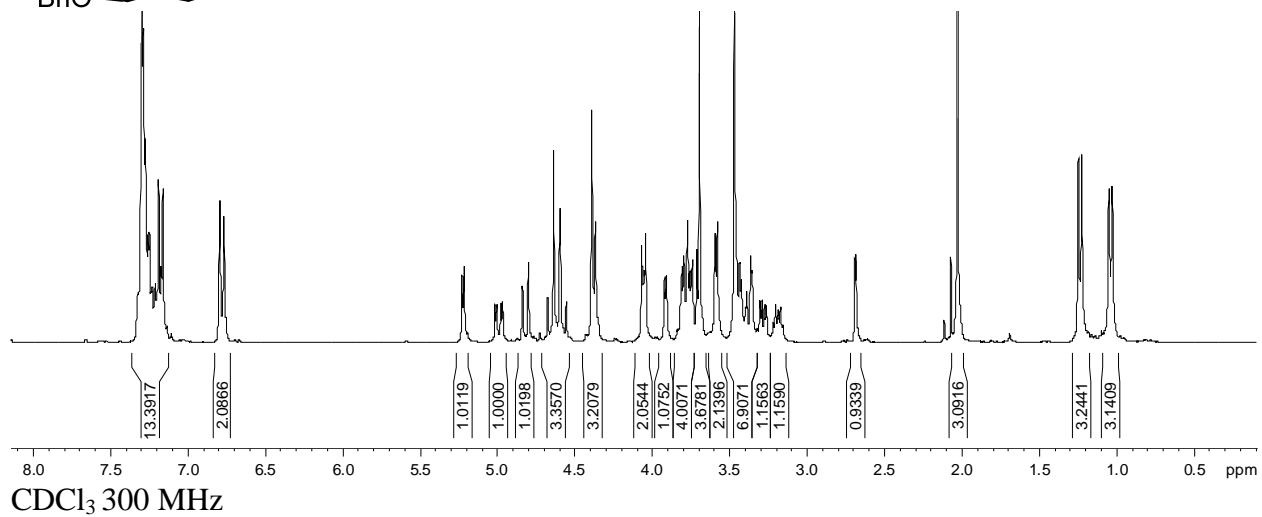
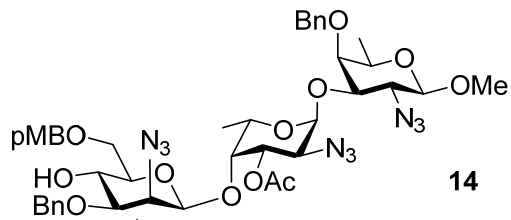


CDCl₃ 300 MHz

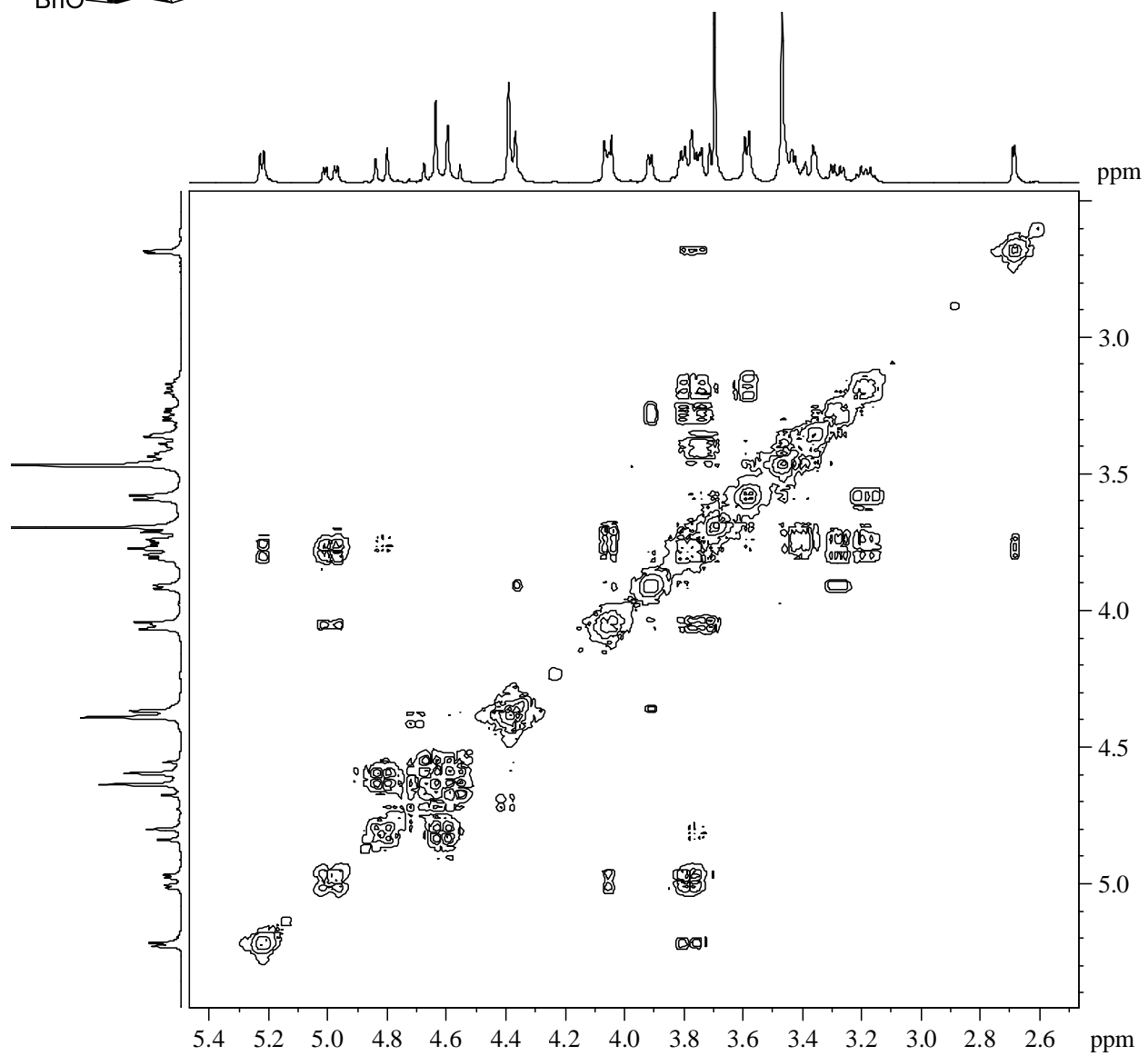
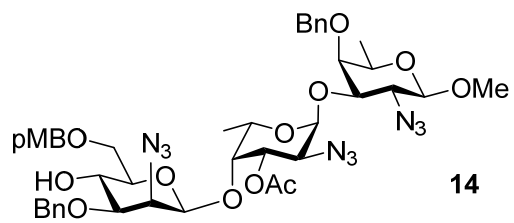




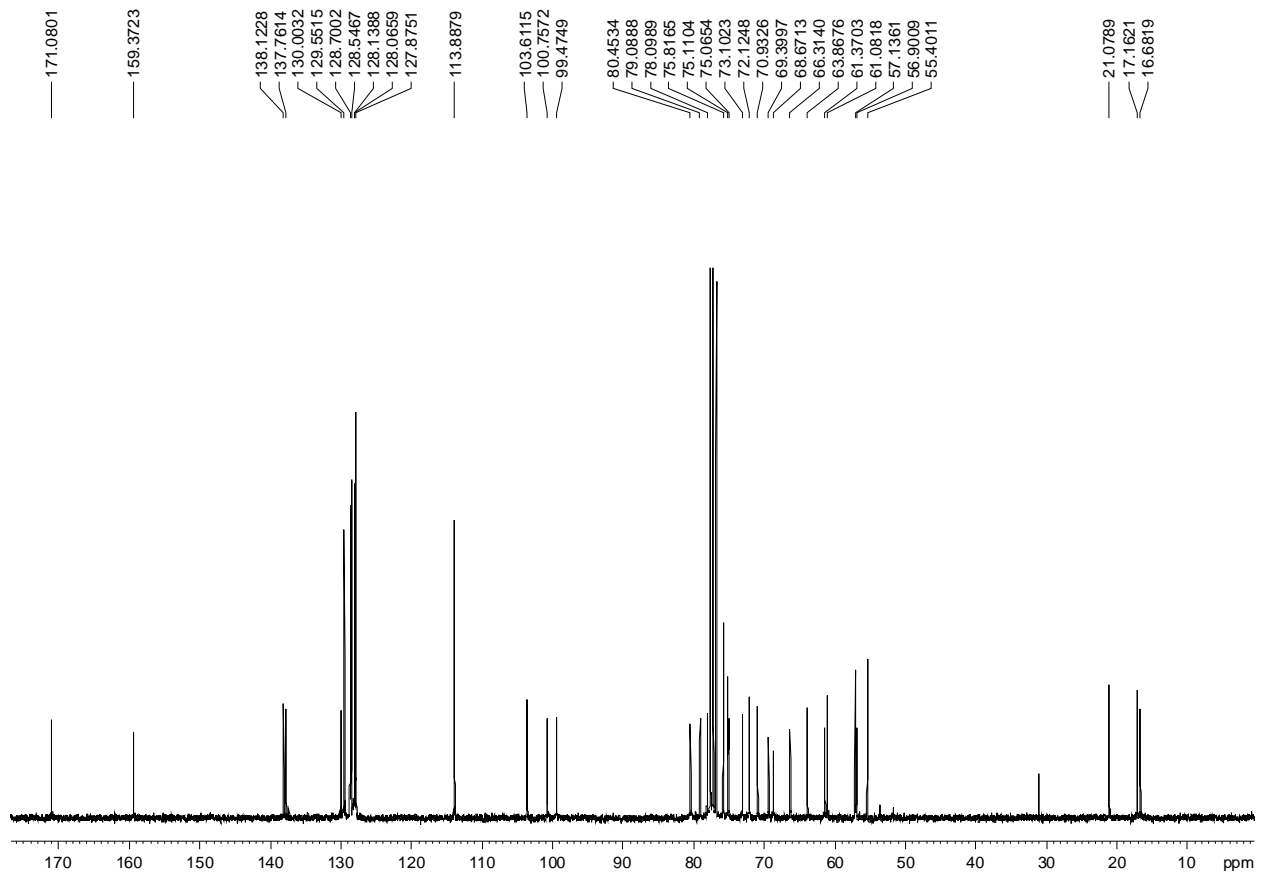
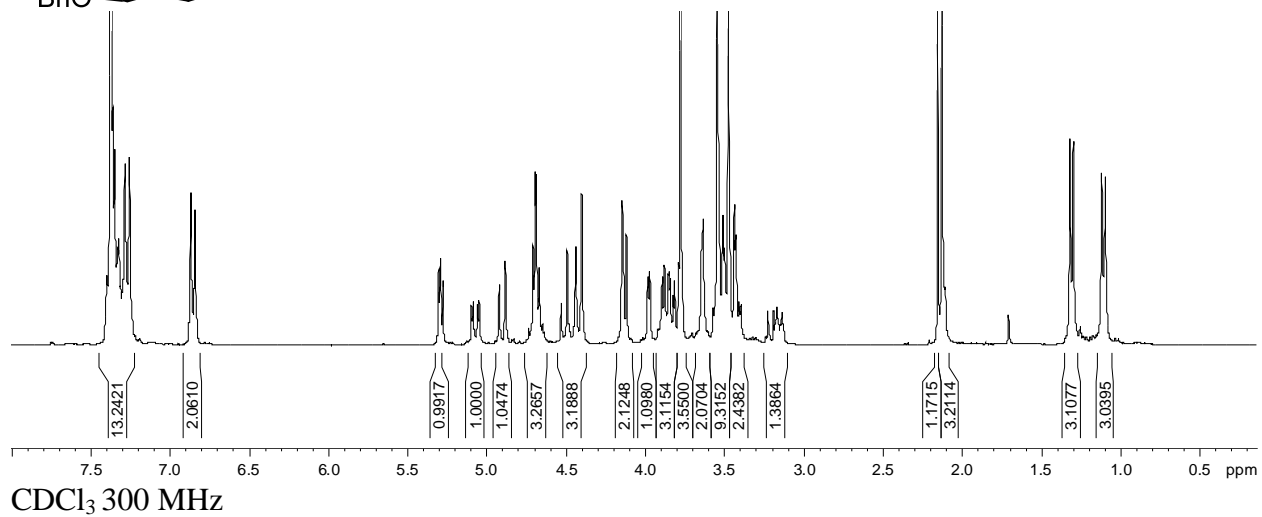
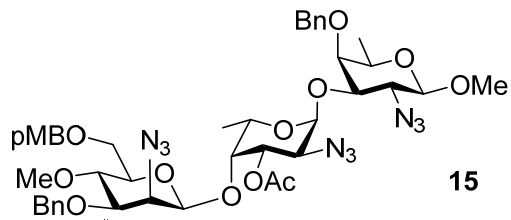
CDCl_3 300 MHz

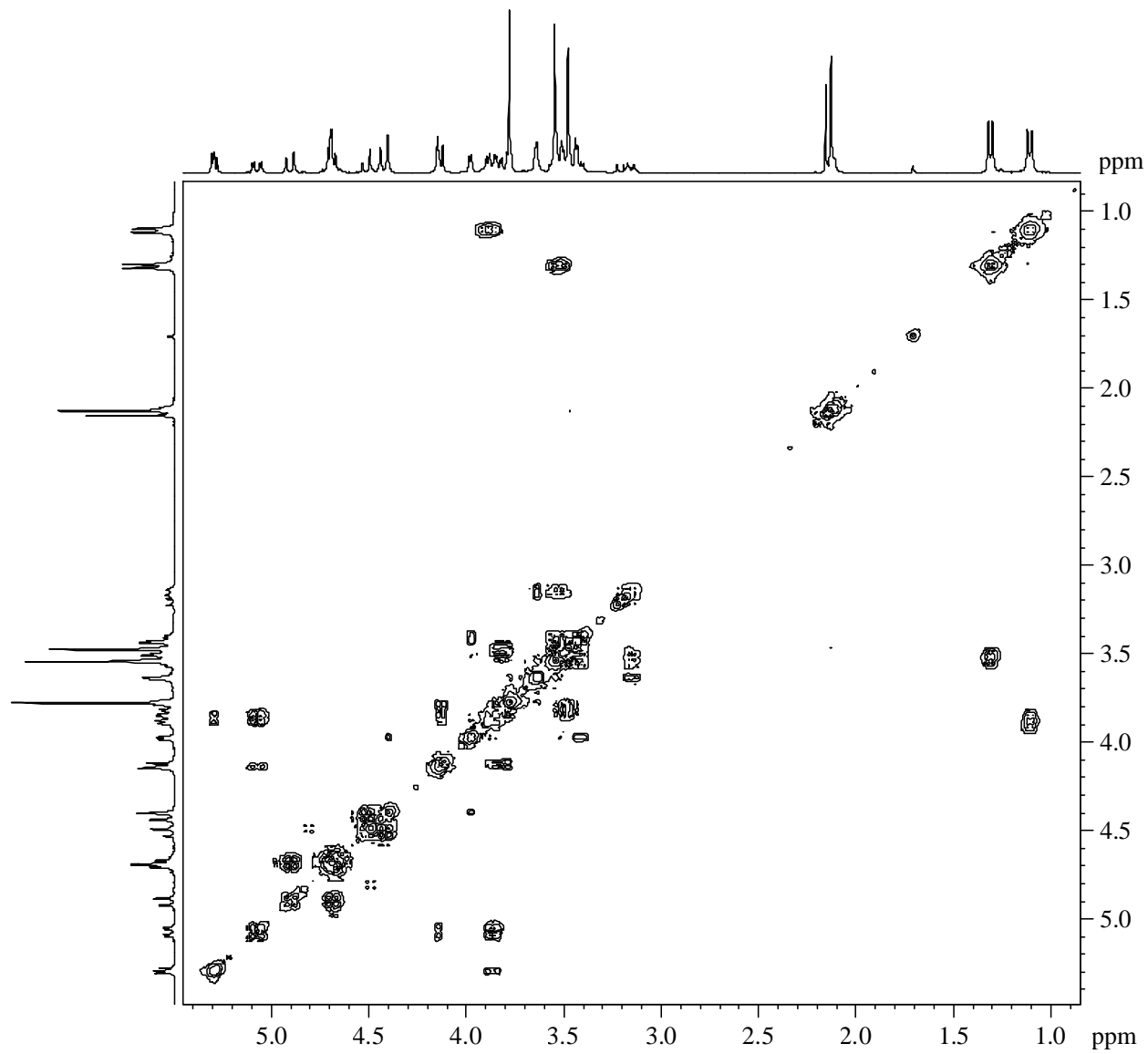
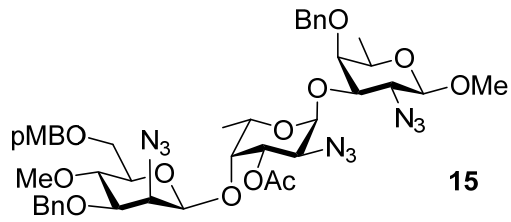


CDCl₃ 75 MHz

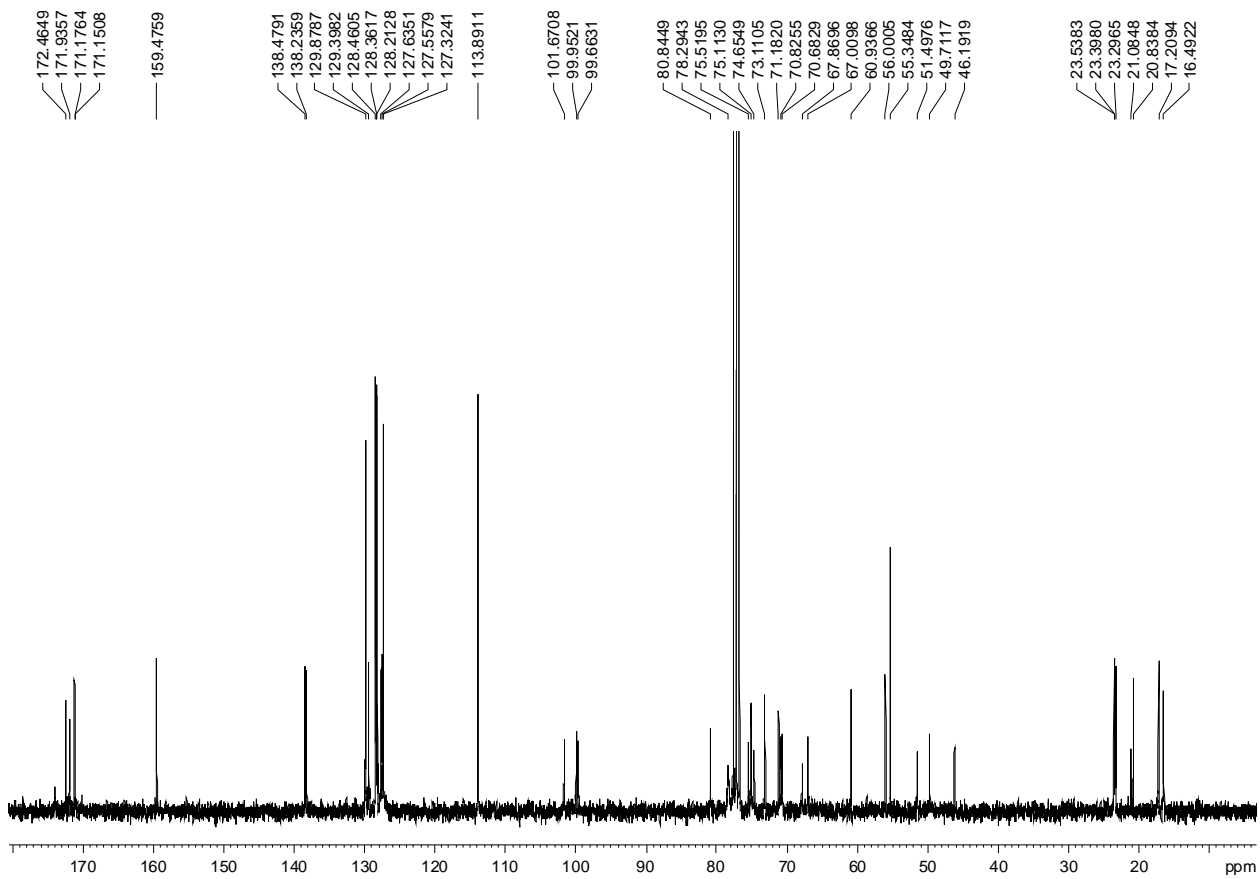
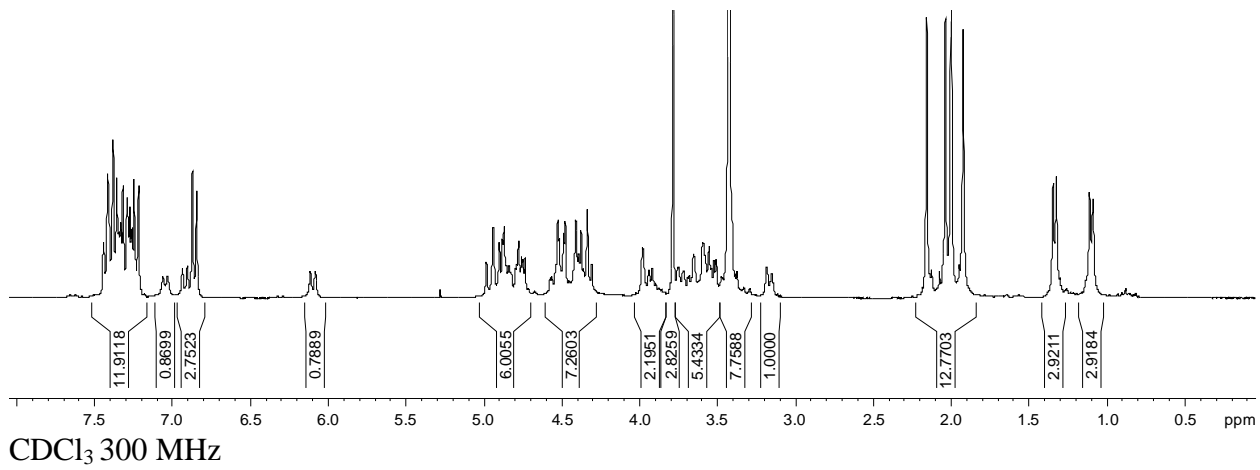
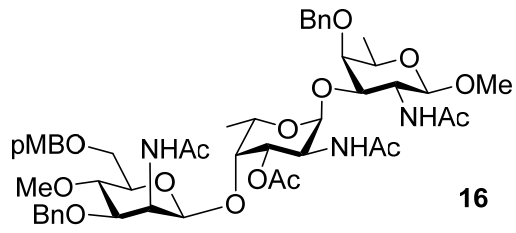


CDCl₃ 300 MHz

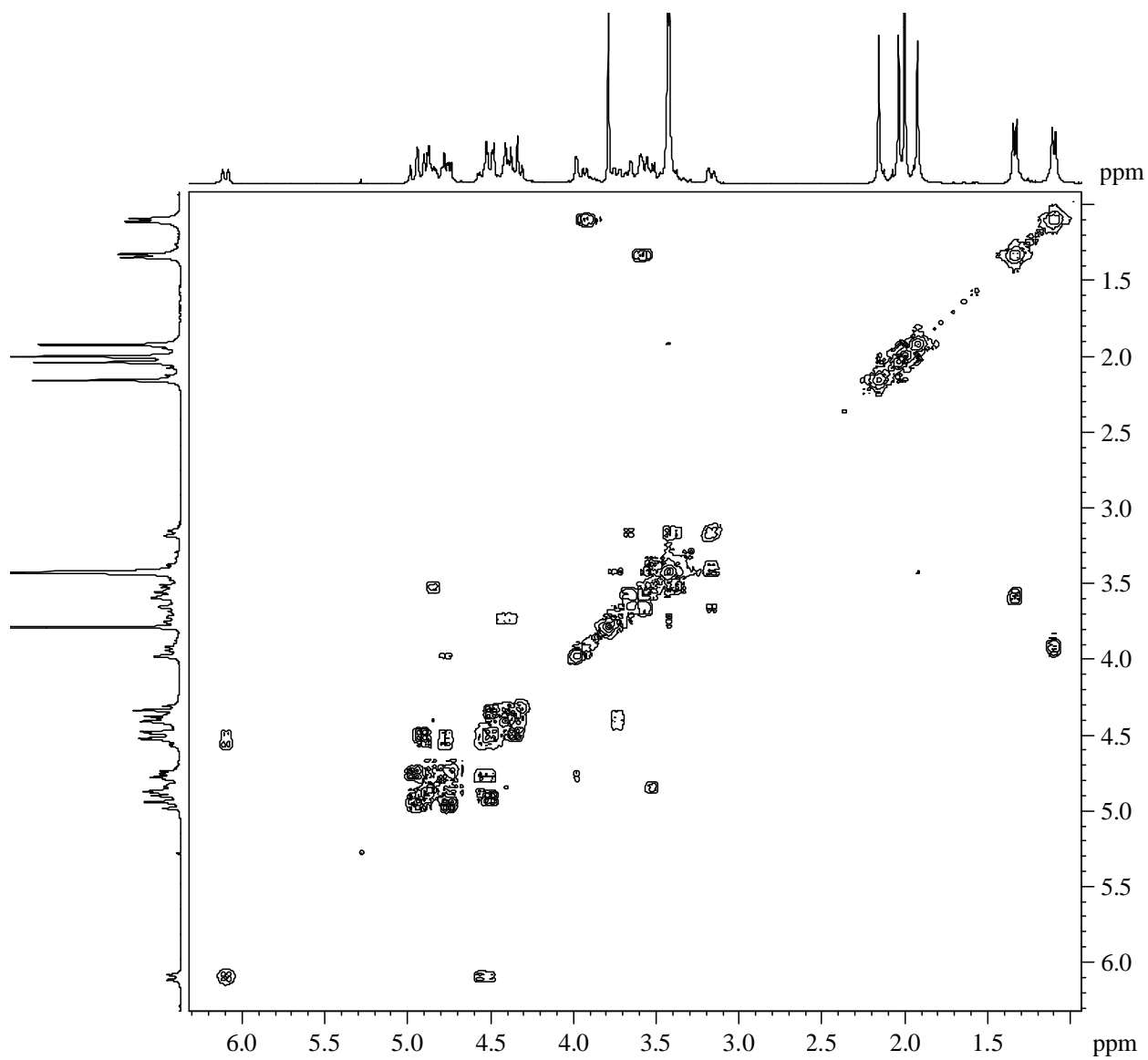
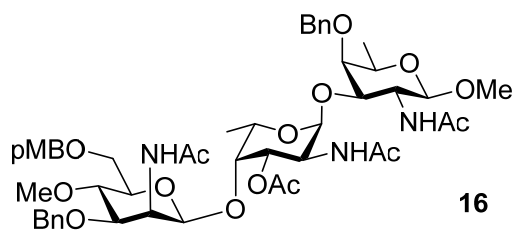




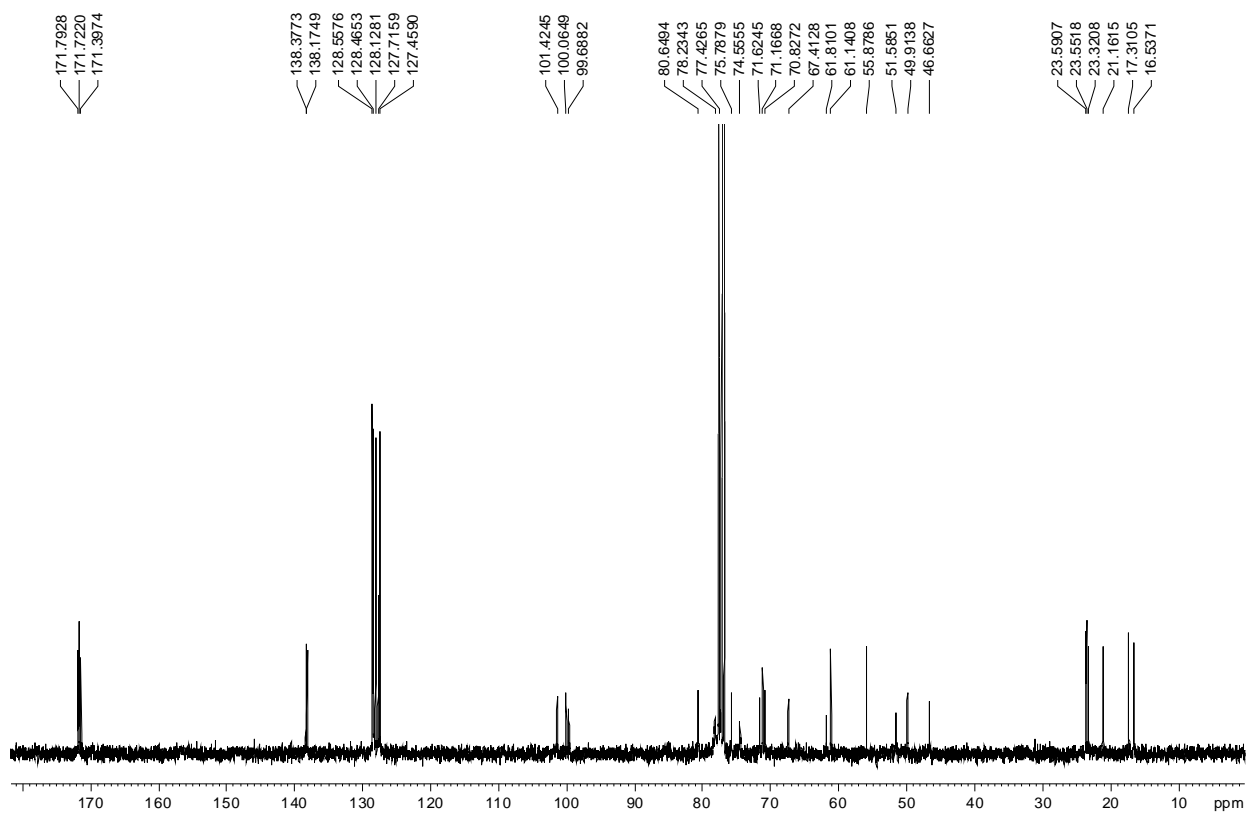
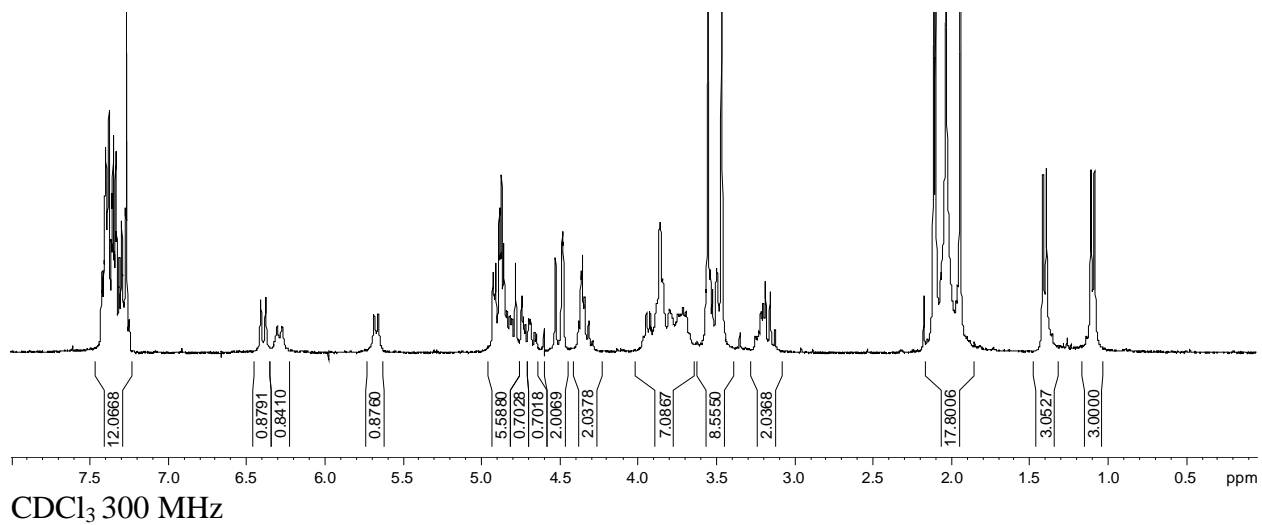
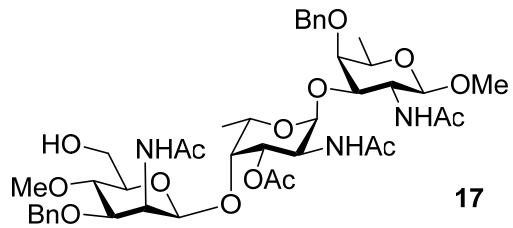
CDCl₃ 300 MHz

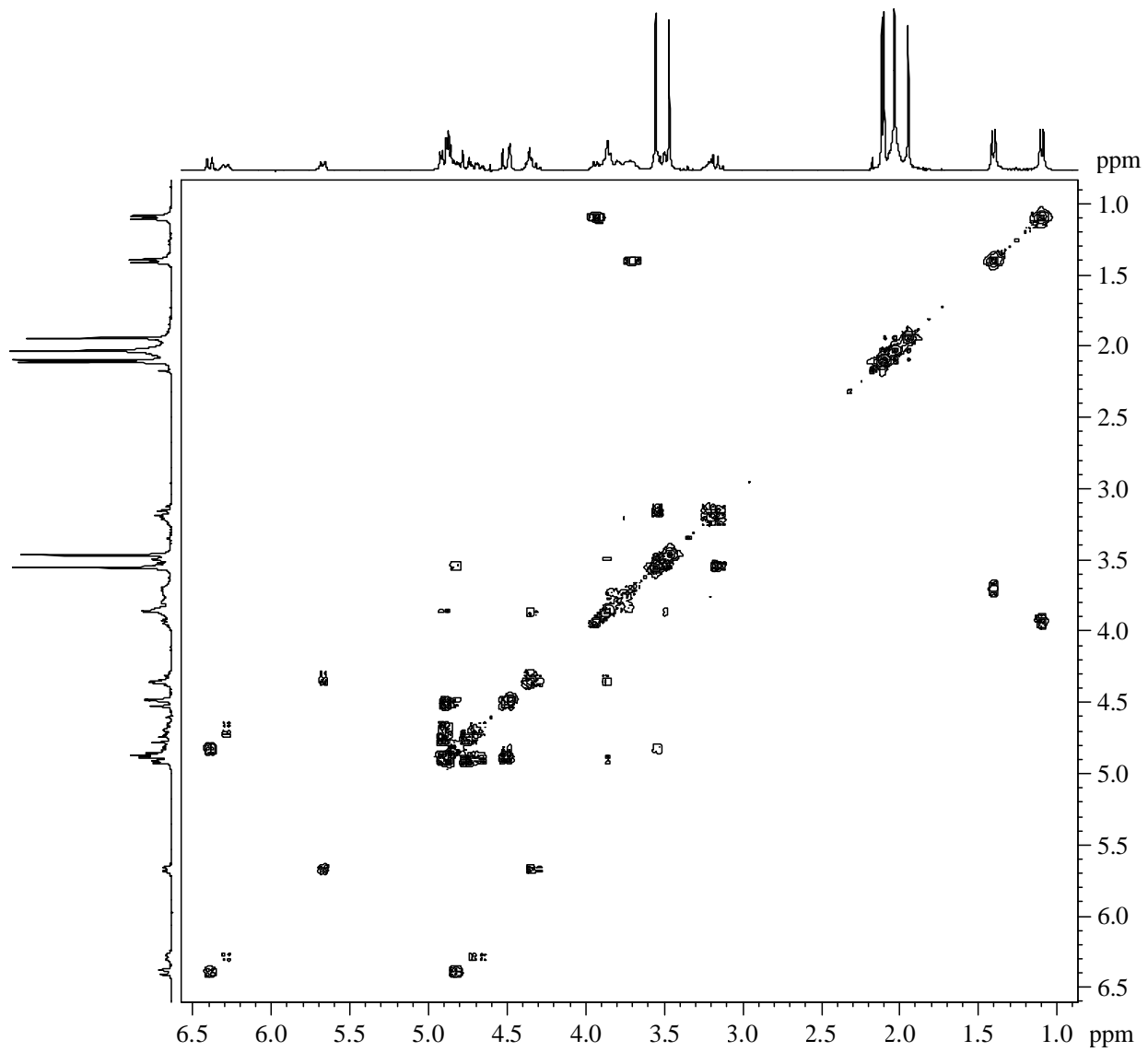
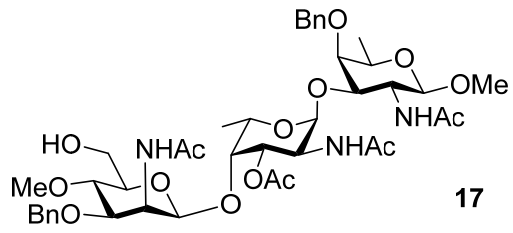


CDCl₃ 75 MHz

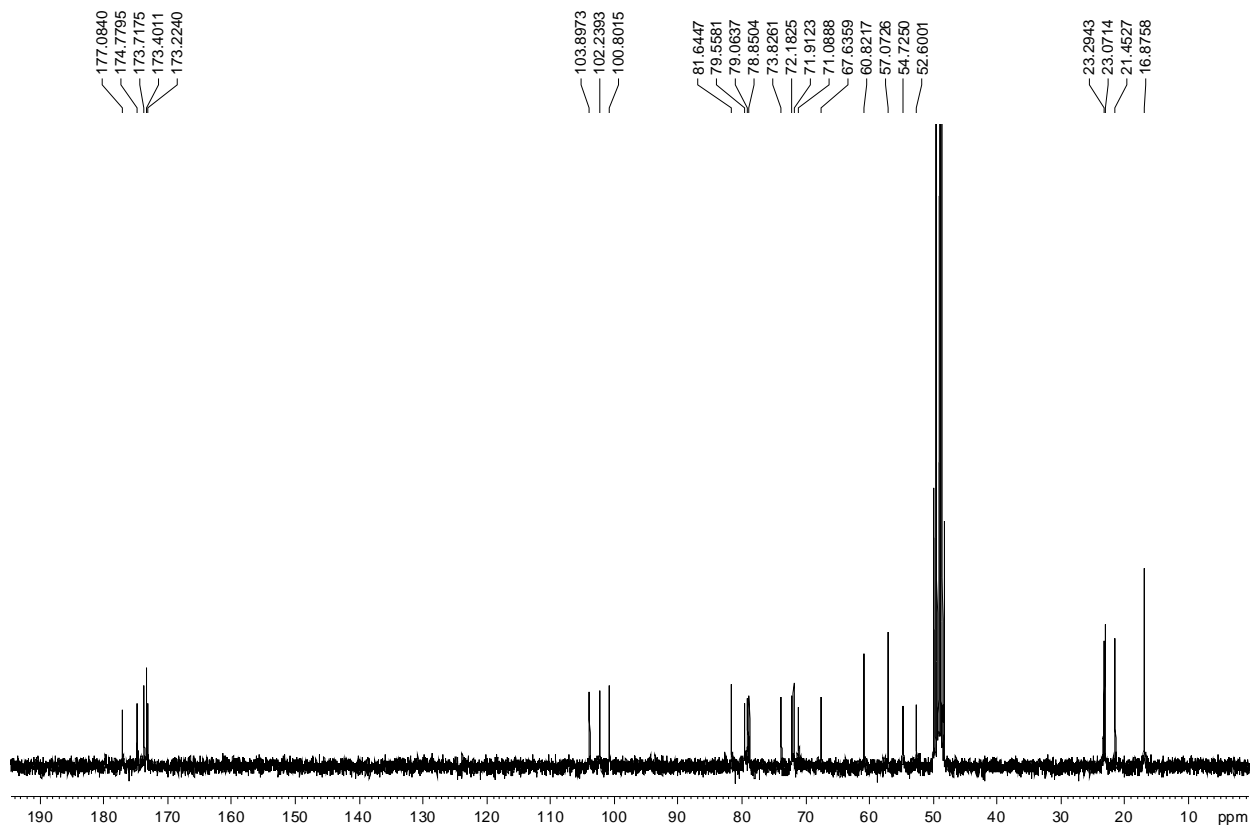
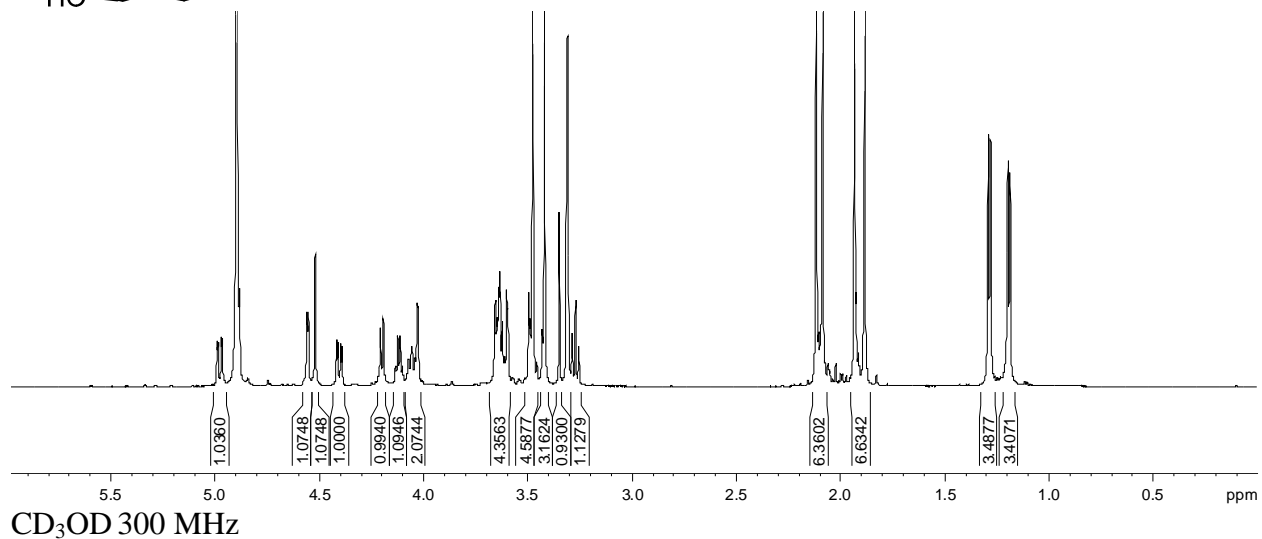
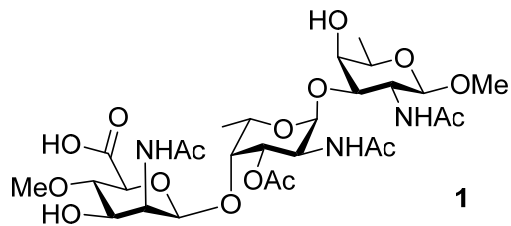


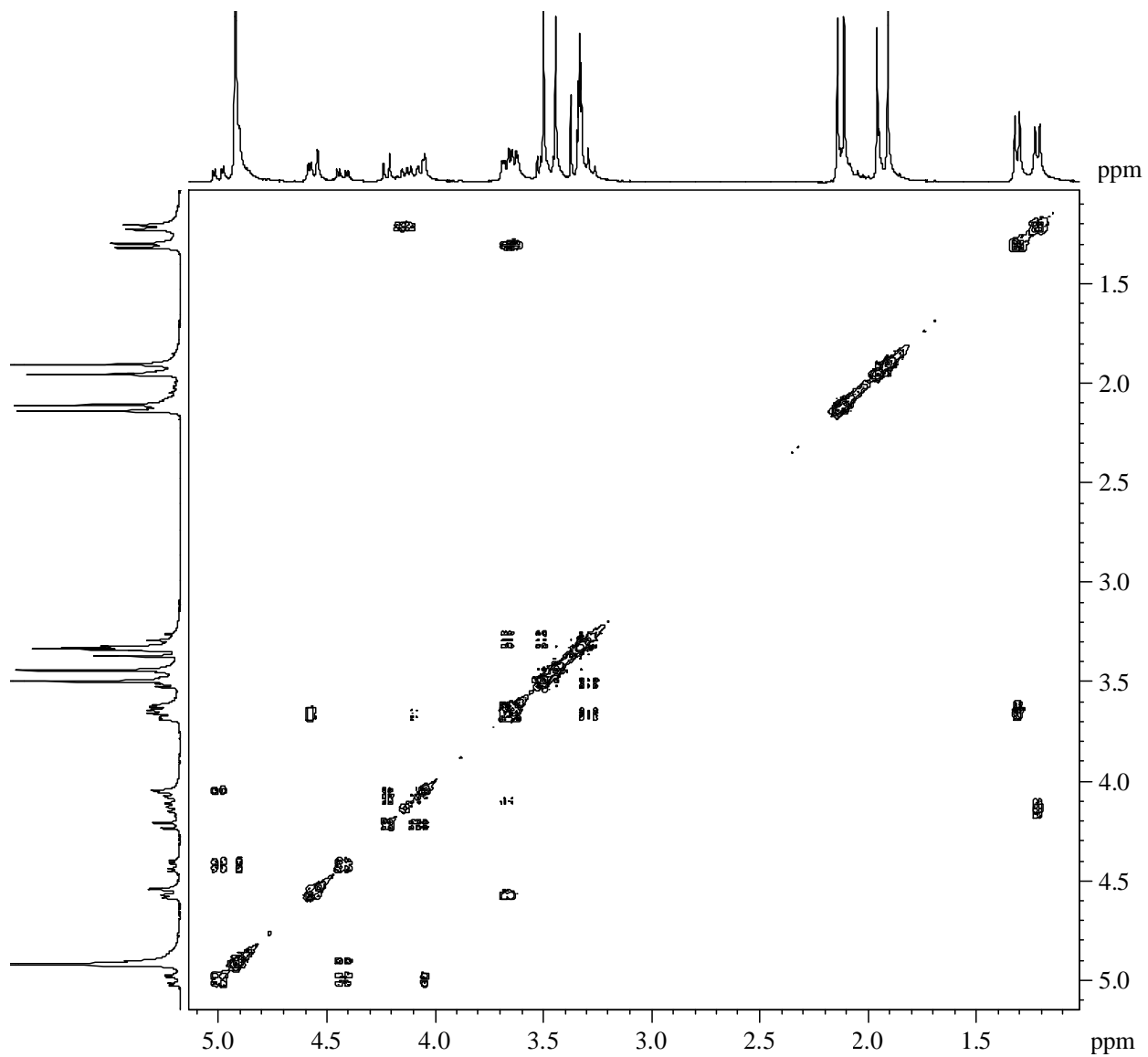
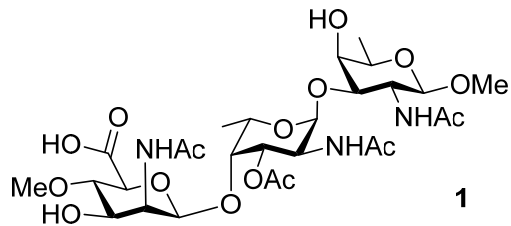
CDCl₃ 300 MHz





CDCl₃ 300 MHz





CD₃OD 300 MHz