

( Supporting Information )

A Helical Metal-Metal Bonded Chain via Pt→Ag Dative Bond.

Tadashi Yamaguchi,\* Fumie Yamazaki, and Tasuku Ito\*

- Table S1. Crystal data and structure refinement for 1.
- Table S2. Atomic coordinates and equivalent isotropic displacement parameters for 1.
- Table S3. Bond lengths [Å] for 1.
- Table S4. Bond angles [°] for 1.
- Table S5. Anisotropic displacement parameters for 1.
- Table S6. Hydrogen coordinates and isotropic displacement parameters for 1.
- Table S7. Crystal data and structure refinement for 2.
- Table S8. Atomic coordinates and equivalent isotropic displacement parameters for 2.
- Table S9. Bond lengths [Å] for 2.
- Table S10. Bond angles [°] for 2.
- Table S11. Anisotropic displacement parameters for 2.
- Table S12. Hydrogen coordinates and isotropic displacement parameters for 2.
- Figure S1. Stacking view of 2.

Table S1. Crystal data and structure refinement for 1.

Empirical formula	C53 H50 Ag2 Cl2 N4 O11 P2
Formula weight	1595.79
Temperature	203(2) K
Wavelength	0.71069 Å
Crystal system	Hexagonal
Space group	P6(1)
Unit cell dimensions	a = 14.8050(6) Å b = 14.8050(6) Å c = 41.608(2) Å α = 90° β = 90° γ = 120°
Volume	7898.1(6) Å <sup>3</sup>
Z	6
Density (calculated)	2.013 Mg/m <sup>3</sup>
Absorption coefficient	6.195 mm <sup>-1</sup>
F(000)	4608
Crystal size	0.25 × 0.15 × 0.15 mm <sup>3</sup>
Theta range for data collection	1.59 to 27.58°
Index ranges	-19 ≤ h ≤ 13, -17 ≤ k ≤ 15, -52 ≤ l ≤ 53
Reflections collected	40720
Independent reflections	12042 [R(int) = 0.0442]
Completeness to theta = 27.58°	99.1 %
Absorption correction	Empirical (SADABS)
Max. and min. transmission	0.525878 and 0.400611
Refinement method	Full-matrix least-squares on F <sup>2</sup>
Data / restraints / parameters	12042 / 1 / 667
Goodness-of-fit on F <sup>2</sup>	0.748
Final R indices [I > 2σ(I)]	R1 = 0.0405, wR2 = 0.1035
R indices (all data)	R1 = 0.0579, wR2 = 0.1132
Absolute structure parameter	0.006(5)
Largest diff. peak and hole	1.131 and -0.993 e.Å <sup>-3</sup>

Table S2. Atomic coordinates ( $\times 10^4$ ) and equivalent isotropic displacement parameters ( $\text{\AA}^2 \times 10^3$ ) for I. U(eq) is defined as one third of the trace of the orthogonalized  $U^{ij}$  tensor. (continued)

	x	y	z	U(eq)
C(27)	-27(8)	3574(9)	6880(2)	53(3)
C(28)	753(8)	4177(8)	7104(2)	44(2)
C(29)	1387(8)	5327(8)	7059(3)	51(2)
C(30)	1252(11)	5932(10)	6824(3)	70(4)
C(31)	1950(11)	6962(10)	6798(3)	71(4)
C(32)	2789(12)	7420(8)	7004(3)	76(4)
C(33)	2882(8)	6797(8)	7241(3)	52(3)
C(34)	2398(8)	3906(8)	7960(2)	47(2)
C(35)	2156(8)	2854(7)	7932(2)	42(2)
C(36)	2473(10)	2399(9)	8159(3)	56(3)
C(37)	3075(9)	2945(10)	8420(3)	55(3)
C(38)	3383(8)	3965(9)	8449(3)	50(2)
C(39)	3073(7)	4476(7)	8225(2)	41(2)
C(40)	3417(7)	5605(8)	8245(2)	45(2)
C(41)	4027(9)	6265(9)	8480(3)	57(3)
C(42)	4261(11)	7264(10)	8489(3)	69(3)
C(43)	3797(10)	7596(8)	8258(3)	62(3)
C(44)	3243(9)	6919(8)	8015(3)	56(3)
C(45)	5935(9)	5743(10)	6092(3)	56(3)
C(46)	7074(11)	6464(12)	6049(4)	78(4)
C(47)	5194(13)	5925(13)	5906(3)	79(4)
C(48)	5544(12)	6037(11)	7798(4)	82(4)
C(49)	6228(19)	7176(15)	7889(6)	149(10)
C(50)	5703(12)	5267(12)	7984(3)	82(4)
C(51)	-3193(15)	-1758(14)	6776(3)	89(5)
C(52)	-2472(15)	-832(12)	6955(5)	103(5)
C(53)	-3629(16)	-2779(17)	6939(7)	144(9)

Table S2. Atomic coordinates ( $\times 10^4$ ) and equivalent isotropic displacement parameters ( $\text{\AA}^2 \times 10^3$ ) for I. U(eq) is defined as one third of the trace of the orthogonalized  $U^{ij}$  tensor.

	x	y	z	U(eq)
Pt(1)	2798(1)	2669(1)	6954(1)	44(1)
Pt(2)	2154(1)	4820(1)	7648(1)	38(1)
Ag(1)	4006(1)	6394(1)	58(1)	58(1)
Ag(2)	3486(1)	4079(1)	7468(1)	51(1)
C(1)	5625(2)	5262(2)	9180(1)	62(1)
C(2)	-720(3)	-2380(5)	6925(1)	139(3)
O(1)	5634(7)	5037(7)	6283(2)	71(2)
O(2)	4861(7)	5775(7)	7598(2)	71(2)
O(3)	-3315(14)	-1706(12)	6499(3)	135(5)
O(4)	5958(17)	5192(15)	179(8)	179(8)
O(5)	5097(11)	4214(10)	9254(5)	8853(4)
O(6)	5032(15)	5672(13)	9158(4)	147(6)
O(7)	6545(11)	5871(11)	9354(4)	182(9)
O(8)	296(12)	-1856(16)	6940(5)	137(5)
O(9)	-980(20)	-2130(40)	7240(5)	185(8)
O(10)	-1259(13)	-2225(16)	6671(3)	310(20)
O(11)	-1190(30)	-3310(14)	6981(12)	153(6)
N(1)	2520(7)	1474(6)	7284(2)	460(40)
N(2)	1427(7)	1880(9)	6664(2)	43(2)
N(3)	2158(7)	5799(6)	7278(2)	57(3)
N(4)	3066(6)	5941(6)	8004(2)	45(2)
C(1)	4267(8)	3266(8)	7149(2)	42(2)
C(2)	5191(8)	4171(8)	7063(3)	45(2)
C(3)	6147(9)	4397(9)	7186(3)	50(2)
C(4)	6183(9)	3709(10)	7402(3)	59(3)
C(5)	5313(9)	2826(9)	7494(3)	66(3)
C(6)	4348(8)	2578(8)	7359(2)	59(3)
C(7)	3392(8)	1595(7)	7435(2)	42(2)
C(8)	3362(9)	842(9)	7635(3)	58(3)
C(9)	2378(12)	-26(10)	7714(3)	68(3)
C(10)	1502(10)	-106(9)	7571(3)	65(3)
C(11)	1592(8)	662(8)	7358(3)	47(2)
C(12)	2898(11)	3851(11)	6698(3)	65(3)
C(13)	3587(12)	4941(12)	76(4)	76(4)
C(14)	3517(14)	5700(14)	6580(4)	100(6)
C(15)	2720(20)	5420(20)	6363(5)	142(11)
C(16)	1973(17)	4350(20)	6307(5)	124(9)
C(17)	2078(13)	3585(15)	6480(3)	80(5)
C(18)	1330(12)	2505(17)	6462(3)	85(5)
C(19)	474(14)	2030(20)	6231(4)	125(9)
C(20)	-195(15)	980(20)	6233(4)	100(6)
C(21)	-24(10)	362(14)	6437(3)	86(5)
C(22)	836(10)	898(13)	6642(3)	72(4)
C(23)	1003(7)	3748(7)	7368(2)	43(2)
C(24)	363(8)	2686(9)	7413(3)	56(3)
C(25)	-420(9)	2081(9)	7205(3)	59(3)
C(26)	-615(9)	2495(10)	6944(3)	64(3)

(to be continued)

Table S3. Bond lengths [Å] for I.

Pt(1)-C(12)	1.990(11)	C(6)-C(7)	1.470(14)
Pt(1)-C(11)	2.062(11)	C(7)-C(8)	1.373(15)
Pt(1)-N(1)	2.111(8)	C(8)-C(9)	1.418(19)
Pt(1)-N(2)	2.136(9)	C(9)-C(10)	1.382(2)
Pt(1)-Ag(2)	2.800(4(9))	C(10)-C(11)	1.396(17)
Pt(1)-Ag(1)	2.812(9)	C(12)-C(17)	1.402(2)
Pt(2)-C(23)	2.020(9)	C(12)-C(13)	1.43(2)
Pt(2)-C(34)	2.032(11)	C(13)-C(14)	1.362(18)
Pt(2)-N(3)	2.113(8)	C(14)-C(15)	1.37(3)
Pt(2)-N(4)	2.128(8)	C(15)-C(16)	1.43(4)
Pt(2)-Ag(1)#1	2.678(9)	C(16)-C(17)	1.410(19)
Pt(2)-Ag(2)	2.795(9)	C(17)-C(18)	1.42(3)
Ag(1)-O(1)	2.364(10)	C(18)-C(19)	1.46(2)
Ag(1)-O(2)	2.419(9)	C(19)-C(20)	1.37(3)
Ag(1)-Pt(2)#2	2.678(9)	C(20)-C(21)	1.36(3)
Ag(2)-O(2)	2.373(9)	C(21)-C(22)	1.402(17)
Ag(2)-C(11)	2.437(9)	C(23)-C(24)	1.384(15)
Ag(2)-C(34)	2.536(9)	C(23)-C(28)	1.407(14)
Ag(2)-C(35)	2.705(9)	C(23)-C(25)	1.362(15)
C(1)-O(6)	1.297(13)	C(25)-C(26)	1.348(18)
C(1)-O(5)	1.379(14)	C(26)-C(27)	1.410(18)
C(1)-O(7)	1.401(13)	C(27)-C(28)	1.402(14)
C(1)-O(4)	1.467(18)	C(28)-C(29)	1.488(14)
C(2)-O(11)	1.214(18)	C(29)-C(30)	1.406(16)
C(2)-O(8)	1.305(16)	C(30)-C(31)	1.352(18)
C(2)-O(10)	1.412(14)	C(31)-C(32)	1.376(17)
C(2)-O(9)	1.47(3)	C(32)-C(33)	1.404(15)
O(1)-C(45)	1.208(15)	C(34)-C(35)	1.417(14)
O(2)-C(48)	1.212(19)	C(34)-C(36)	1.444(14)
O(3)-C(51)	1.176(19)	C(35)-C(36)	1.372(15)
N(1)-C(11)	1.332(13)	C(36)-C(37)	1.381(19)
N(1)-C(7)	1.364(12)	C(37)-C(38)	1.348(17)
N(2)-C(22)	1.272(18)	C(38)-C(39)	1.413(14)
N(2)-C(18)	1.311(18)	C(39)-C(40)	1.486(14)
N(3)-C(33)	1.331(13)	C(40)-C(41)	1.359(15)
N(3)-C(29)	1.351(13)	C(41)-C(42)	1.341(18)
N(4)-C(40)	1.333(13)	C(42)-C(43)	1.404(18)
N(4)-C(44)	1.337(13)	C(43)-C(44)	1.371(16)
C(1)-C(6)	1.393(14)	C(45)-C(47)	1.474(18)
C(1)-C(2)	1.401(15)	C(45)-C(46)	1.488(18)
C(2)-C(3)	1.379(16)	C(48)-C(50)	1.49(2)
C(3)-C(4)	1.380(18)	C(48)-C(49)	1.52(2)
C(4)-C(5)	1.352(18)	C(51)-C(52)	1.45(2)
C(5)-C(6)	1.402(15)	C(51)-C(53)	1.48(3)

Symmetry transformations used to generate equivalent atoms:  
#1 x-y, x+z+1/6 #2 y, x+y, z-1/6

Table S4. Bond angles [°] for I.

C(12)-Pt(1)-C(11)	103.6(5)	C(35)-Ag(2)-Pt(2)	69.6(2)
C(12)-Pt(1)-N(1)	169.4(4)	O(2)-Ag(2)-Pt(1)	139.7(2)
C(11)-Pt(1)-N(1)	79.9(4)	C(1)-Ag(2)-Pt(1)	45.7(3)
C(12)-Pt(1)-N(2)	79.1(5)	C(34)-Ag(2)-Pt(1)	24.4(2)
C(11)-Pt(1)-N(2)	165.2(3)	C(35)-Ag(2)-Pt(1)	100.0(2)
N(1)-Pt(1)-N(2)	80.1(4)	Pt(2)-Ag(2)-Pt(1)	115.62(3)
C(12)-Pt(1)-Ag(2)	100.1(4)	O(6)-Cl(1)-O(5)	114.0(12)
C(11)-Pt(1)-Ag(2)	57.8(3)	O(6)-Cl(1)-O(7)	113.8(9)
N(1)-Pt(1)-Ag(2)	88.5(2)	O(5)-Cl(1)-O(7)	115.6(10)
N(2)-Pt(1)-Ag(2)	136.9(2)	O(6)-Cl(1)-O(4)	107.4(12)
C(12)-Pt(1)-Ag(1)	55.9(3)	O(5)-Cl(1)-O(4)	98.4(12)
C(11)-Pt(1)-Ag(1)	80.4(3)	O(7)-Cl(1)-O(4)	105.7(11)
N(1)-Pt(1)-Ag(1)	134.7(2)	O(11)-Cl(2)-O(8)	20(2)
N(2)-Pt(1)-Ag(1)	89.6(3)	O(11)-Cl(2)-O(10)	106.4(17)
Ag(2)-Pt(1)-Ag(1)	113.89(3)	O(8)-Cl(2)-O(10)	121.1(13)
C(23)-Pt(2)-C(34)	101.9(4)	O(11)-Cl(2)-O(9)	93(3)
C(23)-Pt(2)-N(3)	80.2(4)	O(8)-Cl(2)-O(9)	100.3(14)
C(34)-Pt(2)-N(3)	168.9(4)	O(10)-Cl(2)-O(9)	112.4(12)
C(23)-Pt(2)-N(4)	166.4(4)	C(45)-O(1)-Ag(1)	136.1(8)
C(34)-Pt(2)-N(4)	79.6(4)	C(48)-O(2)-Ag(2)	29.2(10)
N(3)-Pt(2)-N(4)	100.9(3)	C(11)-N(1)-C(7)	119.6(9)
C(23)-Pt(2)-Ag(1)#1	78.8(3)	C(11)-N(1)-Pt(1)	125.9(7)
C(34)-Pt(2)-Ag(1)#1	118.2(2)	C(7)-N(1)-Pt(1)	114.5(6)
N(4)-Pt(2)-Ag(1)#1	88.8(2)	C(22)-N(2)-C(18)	120.3(13)
C(23)-Pt(2)-Ag(2)	91.1(3)	C(22)-N(2)-Pt(1)	126.0(9)
N(3)-Pt(2)-Ag(2)	108.2(2)	C(18)-N(2)-Pt(1)	112.7(11)
C(34)-Pt(2)-Ag(2)	61.0(3)	C(33)-N(3)-C(29)	120.0(9)
N(4)-Pt(2)-Ag(2)	101.3(2)	C(33)-N(3)-Pt(2)	124.8(7)
Ag(1)#1-Pt(2)-Ag(2)	129.51(3)	C(40)-N(4)-C(44)	118.4(9)
C(12)-Ag(1)-O(1)	109.9(4)	C(44)-N(4)-Pt(2)	116.5(7)
O(1)-Ag(1)-Pt(2)#2	81.5(2)	C(6)-C(1)-C(2)	117.4(10)
C(12)-Ag(1)-Pt(1)	44.2(3)	C(6)-C(1)-Pt(1)	113.1(7)
O(1)-Ag(1)-Pt(1)	132.7(2)	C(2)-C(1)-Pt(1)	128.7(8)
Pt(2)#2-Ag(1)-Pt(1)	132.96(4)	C(6)-C(1)-Ag(2)	104.8(6)
O(2)-Ag(2)-C(11)	106.2(3)	C(2)-C(1)-Ag(2)	98.4(6)
O(2)-Ag(2)-C(34)	95.0(3)	Pt(1)-C(1)-Ag(2)	76.5(3)
O(2)-Ag(2)-C(35)	145.4(3)	C(3)-C(2)-C(1)	122.0(10)
C(1)-Ag(2)-C(35)	119.9(3)	C(2)-C(3)-C(4)	118.5(11)
C(1)-Ag(2)-C(35)	115.1(3)	C(5)-C(4)-C(3)	121.9(11)
C(34)-Ag(2)-C(35)	31.2(3)	C(4)-C(5)-C(6)	119.6(11)
O(2)-Ag(2)-Pt(2)	85.6(2)	C(1)-C(6)-C(5)	120.5(10)
C(1)-Ag(2)-Pt(2)	160.4(3)	C(1)-C(6)-C(7)	117.8(9)
C(34)-Ag(2)-Pt(2)	44.5(3)	C(5)-C(6)-C(7)	121.7(9)

(to be continued)

Table S4. Bond angles [°] for I. (continued)

N(1)-C(7)-C(8)	121.9(10)	N(3)-C(29)-C(28)	113.2(9)
N(1)-C(7)-C(6)	114.2(8)	C(30)-C(29)-C(28)	127.4(10)
C(8)-C(7)-C(6)	123.9(10)	C(31)-C(30)-C(29)	120.1(10)
C(7)-C(8)-C(9)	118.6(11)	C(30)-C(31)-C(32)	119.9(10)
C(10)-C(9)-C(8)	118.2(11)	C(31)-C(32)-C(33)	118.4(10)
C(9)-C(10)-C(11)	120.2(10)	N(3)-C(33)-C(32)	121.4(9)
N(1)-C(11)-C(10)	121.1(10)	C(35)-C(34)-C(33)	115.3(9)
C(17)-C(12)-C(13)	115.6(12)	C(35)-C(34)-Pt(2)	130.3(7)
C(17)-C(12)-Pt(1)	115.2(11)	C(39)-C(34)-Pt(2)	113.6(7)
C(13)-C(12)-Pt(1)	128.3(10)	C(35)-C(34)-Ag(2)	81.0(6)
C(17)-C(12)-Ag(1)	101.2(8)	C(39)-C(34)-Ag(2)	109.9(6)
C(13)-C(12)-Ag(1)	98.2(8)	Pt(2)-C(34)-Ag(2)	74.6(3)
Pt(1)-C(12)-Ag(1)	79.9(4)	C(36)-C(35)-C(34)	121.4(10)
C(14)-C(13)-C(12)	124.1(17)	C(36)-C(35)-Ag(2)	120.5(7)
C(13)-C(14)-C(15)	119(2)	C(34)-C(35)-Ag(2)	67.8(5)
C(14)-C(15)-C(16)	120.5(14)	C(35)-C(36)-C(37)	122.3(10)
C(17)-C(16)-C(15)	118(2)	C(38)-C(37)-C(36)	119.0(9)
C(12)-C(17)-C(16)	122.1(19)	C(37)-C(38)-C(39)	121.5(10)
C(13)-C(17)-C(18)	115.3(11)	C(38)-C(39)-C(34)	120.4(9)
C(16)-C(17)-C(18)	122.5(17)	C(38)-C(39)-C(40)	123.0(9)
N(2)-C(18)-C(17)	117.4(14)	C(34)-C(39)-C(40)	116.6(8)
N(2)-C(18)-C(19)	117.2(18)	N(4)-C(40)-C(41)	121.1(10)
C(17)-C(18)-C(19)	125.4(15)	N(4)-C(40)-C(39)	113.5(8)
C(20)-C(19)-C(18)	120.4(16)	C(41)-C(40)-C(39)	125.4(10)
C(21)-C(20)-C(19)	119.7(14)	C(42)-C(41)-C(40)	121.6(11)
C(20)-C(21)-C(22)	115.0(18)	C(41)-C(42)-C(43)	117.8(11)
N(2)-C(22)-C(21)	127.0(15)	C(44)-C(43)-C(42)	117.8(11)
C(24)-C(23)-C(28)	115.8(9)	N(4)-C(43)-C(42)	122.6(10)
C(24)-C(23)-Pt(2)	130.0(8)	O(1)-C(43)-C(42)	121.2(12)
C(28)-C(23)-Pt(2)	113.9(7)	O(1)-C(43)-C(46)	119.7(12)
C(25)-C(24)-C(23)	122.3(11)	C(47)-C(45)-C(46)	119.1(13)
C(26)-C(25)-C(24)	121.2(11)	O(2)-C(48)-C(50)	122.5(13)
C(25)-C(26)-C(27)	121.1(10)	O(2)-C(48)-C(49)	120.8(9)
C(28)-C(27)-C(26)	116.2(10)	C(50)-C(48)-C(49)	116.5(18)
C(27)-C(28)-C(23)	123.3(9)	O(3)-C(51)-C(52)	120.5(18)
C(27)-C(28)-C(29)	119.5(9)	O(3)-C(51)-C(53)	121(2)
C(23)-C(28)-C(29)	117.2(9)	C(52)-C(51)-C(53)	118.0(17)
N(3)-C(29)-C(30)	119.4(10)		

Symmetry transformations used to generate equivalent atoms:

#1 x,y,z+1/6 #2 y,-x+y,z-1/6

Table S5. Anisotropic displacement parameters ( $\text{\AA}^2 \times 10^3$ ) for I. The anisotropic displacement factor exponent takes the form:  $-2\pi^2 h^2 a^{*2} U^{11} + \dots + 2 h k a^* b^* U^{12}$

	U <sup>11</sup>	U <sup>22</sup>	U <sup>33</sup>	U <sup>23</sup>	U <sup>13</sup>	U <sup>12</sup>
Pt(1)	49(1)	37(1)	41(1)	2(1)	1(1)	36(1)
Pt(2)	33(1)	32(1)	43(1)	0(1)	-1(1)	12(1)
Ag(1)	53(1)	74(1)	56(1)	-1(1)	13(1)	40(1)
Ag(2)	53(1)	47(1)	57(1)	-3(1)	9(1)	27(1)
C(1)	67(2)	69(2)	66(2)	-23(1)	-23(1)	45(2)
C(2)	67(2)	199(6)	89(3)	81(3)	-4(2)	21(3)
O(1)	62(5)	64(6)	83(6)	7(5)	9(4)	28(5)
O(2)	49(5)	69(6)	75(6)	-17(4)	8(4)	15(4)
O(3)	214(17)	161(13)	92(8)	-11(8)	-2(9)	141(14)
O(4)	230(20)	157(16)	119(12)	-30(11)	0(13)	76(15)
O(5)	114(11)	84(9)	230(20)	18(10)	31(12)	55(8)
O(6)	256(19)	193(15)	202(16)	-135(14)	-167(15)	191(16)
O(7)	116(10)	113(10)	170(14)	-42(10)	-62(10)	48(8)
O(8)	89(11)	188(17)	195(18)	-43(15)	0(11)	8(11)
O(9)	190(20)	680(70)	111(14)	90(20)	16(13)	260(30)
O(10)	150(13)	250(20)	63(7)	16(9)	-15(7)	101(14)
O(11)	390(40)	57(11)	740(80)	70(20)	-370(50)	-35(17)
N(1)	48(5)	48(5)	36(4)	-6(3)	-2(3)	27(4)
N(2)	43(5)	107(9)	41(4)	-13(5)	-10(4)	51(6)
N(3)	49(5)	37(4)	53(4)	5(3)	2(4)	23(4)
N(4)	37(4)	40(4)	45(4)	-2(3)	-5(3)	16(4)
C(1)	49(6)	42(5)	43(5)	0(4)	8(4)	22(5)
C(2)	51(6)	44(6)	59(6)	-1(4)	2(5)	28(5)
C(3)	43(6)	47(6)	85(8)	5(5)	5(5)	20(5)
C(4)	35(6)	65(8)	95(9)	-7(7)	-8(6)	23(6)
C(5)	58(7)	61(7)	66(7)	0(5)	-13(5)	37(6)
C(6)	39(5)	44(5)	47(5)	1(4)	-4(4)	23(4)
C(7)	41(5)	35(5)	57(6)	0(4)	-6(4)	16(4)
C(8)	63(7)	60(7)	62(6)	-4(5)	-10(5)	39(6)
C(9)	90(10)	52(7)	62(7)	-6(5)	-8(6)	35(7)
C(10)	57(7)	42(6)	70(7)	-6(5)	7(6)	4(5)
C(11)	38(5)	34(5)	60(6)	-7(4)	-4(4)	11(4)
C(12)	81(9)	90(10)	64(7)	24(6)	26(6)	72(8)
C(13)	82(9)	85(10)	90(9)	42(8)	42(7)	64(8)
C(14)	110(12)	121(13)	117(12)	80(11)	75(11)	94(12)
C(15)	210(30)	200(20)	130(17)	104(18)	89(18)	190(20)
C(16)	142(16)	200(20)	111(13)	107(16)	71(12)	142(17)
C(17)	95(11)	137(14)	57(7)	40(8)	28(7)	95(11)
C(18)	76(9)	159(17)	65(7)	28(9)	19(7)	92(11)
C(19)	77(11)	190(20)	74(9)	14(11)	-9(8)	96(14)
C(20)	78(12)	260(30)	52(8)	-47(13)	-22(8)	95(17)
C(21)	45(7)	142(15)	56(7)	-23(8)	-5(6)	37(8)
C(22)	50(7)	97(11)	74(8)	-38(7)	-6(6)	42(7)
C(23)	27(4)	38(5)	49(5)	4(4)	3(4)	4(4)
C(24)	40(6)	58(7)	49(6)	-14(5)	-5(4)	10(5)
C(25)	49(6)	43(6)	72(7)	-11(5)	3(5)	13(5)
C(26)	45(6)	65(8)	75(7)	-40(6)	-21(5)	21(6)

(to be continued)

Table S5. Anisotropic displacement parameters ( $\text{\AA}^2 \times 10^3$ ) for I. The anisotropic displacement factor exponent takes the form:  $-2\pi^2 [h^2 a^2 U^{11} + \dots + 2 h k a^* b^* U^{12}]$ . (continued)

	U <sup>11</sup>	U <sup>22</sup>	U <sup>33</sup>	U <sup>23</sup>	U <sup>13</sup>	U <sup>12</sup>
C(27)	39(5)	59(7)	51(6)	-7(5)	-8(4)	18(5)
C(28)	40(5)	43(5)	50(5)	-6(4)	-5(4)	22(5)
C(29)	41(5)	39(5)	58(6)	1(4)	-12(4)	9(5)
C(30)	71(8)	71(8)	70(8)	0(6)	-31(6)	37(7)
C(31)	87(9)	49(7)	74(8)	12(6)	-30(7)	31(7)
C(32)	94(10)	26(5)	87(9)	11(5)	-27(7)	14(6)
C(33)	46(6)	33(5)	75(7)	4(4)	-22(5)	19(5)
C(34)	41(5)	41(5)	48(5)	4(4)	13(4)	11(4)
C(35)	41(5)	43(5)	35(4)	1(4)	4(4)	15(4)
C(36)	61(7)	51(6)	64(7)	14(5)	14(5)	35(6)
C(37)	49(6)	80(8)	48(6)	31(5)	15(5)	41(6)
C(38)	38(5)	57(7)	55(6)	7(5)	1(4)	23(5)
C(39)	29(5)	43(5)	50(5)	3(4)	1(4)	18(4)
C(40)	29(5)	42(5)	47(5)	-2(4)	-1(4)	6(4)
C(41)	50(6)	52(7)	59(6)	-1(5)	-5(5)	20(5)
C(42)	67(8)	55(7)	53(6)	-6(5)	-7(5)	7(6)
C(43)	74(8)	34(6)	61(7)	-1(5)	-4(6)	15(5)
C(44)	64(7)	31(5)	59(6)	2(4)	-1(5)	15(5)
C(45)	48(6)	69(8)	50(6)	-13(5)	1(4)	28(6)
C(46)	60(8)	74(9)	83(9)	-10(7)	6(7)	22(7)
C(47)	104(11)	102(11)	54(7)	10(7)	13(7)	67(9)
C(48)	66(9)	49(7)	102(11)	-11(7)	25(8)	7(7)
C(49)	140(20)	71(12)	160(20)	-54(12)	6(15)	-7(12)
C(50)	73(9)	82(10)	57(7)	4(7)	0(6)	14(8)
C(51)	127(14)	105(12)	47(7)	4(7)	25(8)	67(11)
C(52)	103(13)	64(9)	136(14)	-14(10)	10(11)	38(9)
C(53)	93(14)	102(15)	210(30)	56(16)	-7(16)	30(12)

Table S6. Hydrogen coordinates ( $\times 10^4$ ) and isotropic displacement parameters ( $\text{\AA}^2 \times 10^{-3}$ ) for I.

	x	y	z	U(eq)
H(1)	5154	4652	6915	50
H(2)	6776	5032	7125	59
H(3)	6857	3869	7485	66
H(4)	5358	2369	7654	58
H(5)	3994	916	7719	58
H(6)	2335	-576	7861	68
H(7)	820	-692	7619	65
H(8)	977	612	7264	47
H(9)	4144	5169	6907	76
H(10)	4025	6433	6610	100
H(11)	2623	5937	6262	142
H(12)	1423	4147	6149	124
H(13)	383	2491	6083	100
H(14)	-806	659	6097	125
H(15)	-465	-420	6442	86
H(16)	1013	484	6788	72
H(17)	487	2370	7597	56
H(18)	-837	1342	7245	59
H(19)	2049	6794	6794	64
H(20)	-164	3888	6696	53
H(21)	667	5614	6682	70
H(22)	1853	7371	6639	71
H(23)	3323	8133	6978	76
H(24)	3456	7102	7387	52
H(25)	1763	2450	7749	42
H(26)	2270	1678	8134	56
H(27)	3279	2610	8581	55
H(28)	3804	4363	8630	50
H(29)	4303	6008	8643	57
H(30)	4716	7730	8648	69
H(31)	3857	8275	8271	62
H(32)	2952	7146	7846	56
H(33)	7406	6074	5977	78
H(34)	7392	6802	6243	78
H(35)	7192	6968	5887	78
H(36)	5543	6500	5760	79
H(37)	4742	6042	6039	79
H(38)	4745	5314	5771	79
H(39)	6609	7572	7705	149
H(40)	5831	7451	7974	149
H(41)	6750	7263	8050	149
H(42)	5841	4840	7839	82
H(43)	6267	5596	8130	82
H(44)	5082	4808	8102	82
H(45)	-2659	-312	6946	103
H(46)	-1770	-543	6868	103
H(47)	-2437	-1001	7176	103
H(48)	-4368	-3175	6922	144
H(49)	-3353	-3196	6847	144
H(50)	-3453	-2709	7166	144

Table S8. Atomic coordinates (x 10<sup>4</sup>) and equivalent isotropic displacement parameters (Å<sup>2</sup> × 10<sup>3</sup>) for Z. U(eq) is defined as one third of the trace of the orthogonalized U<sub>ij</sub> tensor.

	x	y	z	U(eq)
Pt(1)	6656(1)	2133(1)	2228(1)	39(1)
Pt(2)	7555(1)	129(1)	2387(1)	36(1)
Pt(3)	7371(1)	-1855(1)	3642(1)	38(1)
Ag(1)	6517(1)	1030(1)	2413(1)	55(1)
Ag(2)	7258(1)	-719(1)	3490(1)	52(1)
C(1)	2629(2)	-730(1)	2585(2)	80(1)
C(2)	-78(2)	-1267(1)	109(2)	79(1)
S(1)	9127(1)	1652(1)	2948(1)	60(1)
S(2)	5161(2)	1767(1)	101(2)	82(1)
S(3)	8515(2)	622(1)	4737(1)	69(1)
S(4)	5160(1)	-329(1)	1445(2)	65(1)
S(5)	9461(2)	-1508(1)	5211(2)	80(1)
S(6)	6796(1)	-1442(1)	1142(1)	57(1)
O(1)	5362(6)	1246(4)	3318(6)	120(3)
O(2)	6341(5)	-604(3)	4613(4)	86(2)
O(3)	2150(8)	2081(6)	1879(7)	165(5)
O(4)	2742(10)	-150(5)	2559(8)	189(6)
O(5)	1998(6)	-876(5)	2090(6)	146(4)
O(6)	3297(6)	-910(6)	2209(9)	198(6)
O(7)	2529(13)	-890(8)	3283(6)	186(6)
O(8)	640(6)	-1067(5)	-85(8)	312(13)
O(9)	-285(8)	-1170(6)	842(6)	194(6)
O(10)	-645(11)	-1017(11)	-272(12)	367(15)
O(11)	-86(10)	-1819(7)	-4(13)	292(13)
N(1)	6978(4)	2259(2)	3452(3)	42(1)
N(2)	5520(4)	2548(3)	2154(4)	49(2)
N(3)	8820(3)	66(2)	2546(4)	44(2)
N(4)	7434(4)	112(2)	1127(3)	43(1)
N(5)	7388(4)	-2270(3)	4762(3)	46(2)
N(6)	6148(4)	-1980(3)	3265(4)	47(2)
C(1)	7754(5)	1793(3)	2251(4)	44(2)
C(2)	8281(5)	1557(3)	1694(5)	50(2)
C(3)	9027(5)	1463(4)	1985(5)	59(2)
C(4)	8142(4)	1865(3)	2964(4)	45(2)
C(5)	7736(4)	2080(3)	3637(4)	44(2)
C(6)	8005(5)	2096(4)	4410(5)	57(2)
C(7)	7512(6)	2275(4)	4997(5)	65(2)
C(8)	6757(6)	2440(4)	4812(5)	67(3)
C(9)	6509(5)	2426(4)	4042(5)	54(2)
C(10)	6278(5)	1859(3)	1170(4)	45(2)
C(11)	6560(5)	1488(3)	571(5)	54(2)
C(12)	6026(6)	1407(4)	-30(5)	67(3)
C(13)	5518(5)	2034(4)	980(5)	55(2)
C(14)	5099(5)	2415(4)	1481(5)	55(2)
C(15)	4359(6)	2640(5)	1325(6)	81(3)
C(16)	4027(6)	3014(5)	1859(8)	93(4)
C(17)	4477(5)	3173(4)	2513(5)	65(2)

(to be continued)

Table S7. Crystal data and structure refinement for Z.

Empirical formula	C63 H54 Ag2 Cl2 N6 O11 P3 S6
Formula weight	2135.39
Temperature	213(2) K
Wavelength	0.71069 Å
Crystal system	Monoclinic
Space group	P2(1)/n
Unit cell dimensions	a = 16.7243(9) Å b = 23.9731(12) Å c = 16.9345(9) Å α = 90° β = 90.625(1)° γ = 90°
Volume	6789.2(6) Å <sup>3</sup>
Z	4
Density (calculated)	2.089 Mg/m <sup>3</sup>
Absorption coefficient	7.052 mm <sup>-1</sup>
F(000)	4080
Crystal size	0.07 × 0.14 × 0.33 mm <sup>3</sup>
Theta range for data collection	1.47 to 27.56°
Index ranges	-21 ≤ h ≤ 21, -30 ≤ k ≤ 31, -18 ≤ l ≤ 22
Reflections collected	43542
Independent reflections	15336 [R(int) = 0.0515]
Completeness to theta = 27.56°	97.7 %
Absorption correction	Empirical (SADABS)
Max. and min. transmission	0.475379 and 0.273797
Refinement method	Full-matrix least-squares on F <sup>2</sup>
Data / restraints / parameters	15336 / 0 / 838
Goodness-of-fit on F <sup>2</sup>	0.630
Final R indices [I > 2σ(I)]	R1 = 0.0330, wR2 = 0.0833
R indices (all data)	R1 = 0.0734, wR2 = 0.1097
Largest diff. peak and hole	0.768 and -1.130 e.Å <sup>-3</sup>

Table S8. Atomic coordinates (x, y, z) and equivalent isotropic displacement parameters ( $\text{\AA}^2 \times 10^3$ ) for 2. U(eq) is defined as one third of the trace of the orthogonalized  $U_{ij}$  tensor. (continued)

	x	y	z	U(eq)
C(18)	5206(5)	2932(4)	2629(5)	52(2)
C(19)	7651(4)	312(3)	3540(4)	41(2)
C(20)	7117(5)	540(3)	4118(4)	48(2)
C(21)	7508(5)	715(4)	4782(4)	57(2)
C(22)	8430(5)	347(3)	3805(4)	47(2)
C(23)	9074(4)	192(3)	3284(5)	48(2)
C(24)	9882(5)	170(4)	3481(6)	69(3)
C(25)	10423(5)	-23(5)	2938(8)	85(3)
C(26)	9343(5)	-175(4)	2205(7)	72(3)
C(27)	6368(4)	-130(4)	2019(5)	58(2)
C(28)	5732(4)	22(3)	2277(4)	39(2)
C(29)	5062(5)	-123(3)	2820(4)	44(2)
C(30)	6121(5)	-312(4)	2455(5)	58(2)
C(31)	6680(5)	-80(3)	1516(4)	44(2)
C(32)	6497(6)	-7(3)	876(5)	50(2)
C(33)	7078(8)	-35(4)	75(5)	61(2)
C(34)	7830(7)	88(4)	-461(5)	76(3)
C(35)	7990(5)	240(4)	-206(5)	73(3)
C(36)	8429(5)	243(3)	601(5)	57(2)
C(37)	9044(5)	-1593(3)	4063(4)	45(2)
C(38)	9610(6)	-1222(3)	3810(5)	54(2)
C(39)	8587(5)	-1142(4)	4366(6)	54(2)
C(40)	8038(5)	-1773(3)	4820(5)	54(2)
C(41)	8154(7)	-2147(3)	5206(5)	52(2)
C(42)	6966(7)	-2382(4)	5962(6)	80(3)
C(43)	6891(5)	-2757(5)	6240(5)	80(3)
C(44)	8022(4)	-2914(4)	6240(5)	78(3)
C(45)	7778(5)	-2661(4)	5753(6)	83(3)
C(46)	6099(5)	-1534(3)	5032(5)	57(2)
C(47)	5239(5)	-1333(3)	2036(4)	40(2)
C(48)	4743(6)	-1276(5)	1276(5)	42(2)
C(49)	5524(5)	-1608(3)	2126(4)	56(2)
C(50)	4610(6)	-1823(4)	2504(5)	45(2)
C(51)	4743(6)	-1823(4)	2184(5)	63(2)
C(52)	5524(5)	-1979(5)	2629(7)	83(3)
C(53)	4743(6)	-2133(6)	3405(7)	101(4)
C(54)	6541(7)	-2116(5)	3700(5)	74(3)
C(55)	5994(9)	-486(4)	5279(6)	72(3)
C(56)	7329(8)	-187(6)	5817(7)	115(5)
C(57)	4709(12)	-626(5)	5592(7)	101(4)
C(58)	4217(15)	1366(7)	3104(19)	194(14)
C(59)	4372(14)	1747(9)	3620(20)	360(20)
C(60)	2034(10)	1784(9)	2340(20)	270(20)
C(61)	1448(15)	1585(7)	1784(9)	110(5)
C(62)	2437(11)	1323(11)	2266(12)	236(13)
C(63)	2437(11)	1306(9)	1170(11)	172(8)

Table S9. Bond lengths [ $\text{\AA}$ ] for 2.

Pt(1)-C(10)	2.004(7)	N(6)-C(50)	1.369(9)
Pt(1)-C(1)	2.009(8)	C(1)-C(4)	1.375(10)
Pt(1)-N(2)	2.148(6)	C(1)-C(2)	1.416(11)
Pt(1)-N(1)	2.157(6)	C(2)-C(3)	1.355(11)
Pt(1)-Ag(1)	2.6746(7)	C(4)-C(5)	1.429(10)
Pt(2)-C(19)	2.006(7)	C(5)-C(6)	1.381(10)
Pt(2)-C(28)	2.007(7)	C(6)-C(7)	1.367(13)
Pt(2)-N(3)	2.135(6)	C(7)-C(8)	1.356(13)
Pt(2)-N(4)	2.142(6)	C(8)-C(9)	1.364(11)
Pt(2)-Ag(1)	2.7711(7)	C(10)-C(13)	1.373(11)
Pt(3)-C(37)	2.8083(6)	C(10)-C(11)	1.434(11)
Pt(3)-C(37)	2.001(7)	C(11)-C(12)	1.360(11)
Pt(3)-C(46)	2.010(7)	C(13)-C(14)	1.435(12)
Pt(3)-N(5)	2.142(6)	C(14)-C(15)	1.373(12)
Pt(3)-N(6)	2.157(6)	C(15)-C(16)	1.391(15)
Pt(3)-Ag(2)	2.7425(6)	C(16)-C(17)	1.386(14)
Ag(1)-C(28)	2.438(7)	C(17)-C(18)	1.362(11)
Ag(1)-O(1)	2.532(8)	C(19)-C(22)	1.376(10)
Ag(2)-O(2)	2.471(7)	C(19)-C(20)	1.441(10)
Ag(2)-C(46)	2.541(7)	C(20)-C(21)	1.360(10)
Ag(2)-C(19)	2.558(7)	C(22)-C(23)	1.449(11)
C(1)-O(6)	1.255(10)	C(23)-C(24)	1.389(11)
C(1)-O(5)	1.363(12)	C(24)-C(25)	1.378(15)
C(1)-O(4)	1.389(9)	C(25)-C(26)	1.372(15)
C(2)-O(10)	1.290(14)	C(26)-C(27)	1.374(12)
C(2)-O(9)	1.313(10)	C(28)-C(31)	1.371(10)
C(2)-O(11)	1.339(15)	C(28)-C(29)	1.455(10)
C(2)-O(8)	1.337(9)	C(29)-C(30)	1.353(10)
S(1)-C(3)	1.699(9)	C(31)-C(32)	1.450(11)
S(1)-C(4)	1.724(8)	C(32)-C(33)	1.388(11)
S(1)-C(12)	1.703(10)	C(33)-C(34)	1.368(14)
S(2)-C(13)	1.722(8)	C(34)-C(35)	1.375(15)
S(3)-C(21)	1.719(8)	C(35)-C(36)	1.390(12)
S(4)-C(31)	1.719(9)	C(37)-C(40)	1.376(10)
S(4)-C(30)	1.699(10)	C(37)-C(38)	1.429(11)
S(5)-C(39)	1.721(8)	C(38)-C(39)	1.342(11)
S(6)-C(49)	1.721(7)	C(40)-C(41)	1.444(12)
S(6)-C(48)	1.706(9)	C(41)-C(42)	1.411(11)
S(6)-C(40)	1.721(8)	C(42)-C(43)	1.352(15)
S(6)-C(45)	1.721(7)	C(43)-C(44)	1.418(15)
O(1)-C(58)	1.18(2)	C(44)-C(45)	1.369(12)
O(2)-C(55)	1.207(11)	C(46)-C(49)	1.379(10)
O(3)-C(61)	1.213(17)	C(46)-C(47)	1.430(10)
N(1)-C(5)	1.339(10)	C(47)-C(48)	1.354(10)
N(1)-C(18)	1.371(9)	C(49)-C(50)	1.423(10)
N(2)-C(18)	1.333(10)	C(50)-C(51)	1.392(11)
N(2)-C(14)	1.371(10)	C(51)-C(52)	1.354(13)
N(3)-C(27)	1.341(10)	C(52)-C(53)	1.381(15)
N(3)-C(23)	1.350(10)	C(53)-C(54)	1.393(13)
N(4)-C(36)	1.332(9)	C(55)-C(57)	1.455(16)
N(4)-C(32)	1.357(10)	C(55)-C(56)	1.483(14)
N(5)-C(45)	1.336(10)	C(58)-C(60)	1.464(4)
N(5)-C(41)	1.347(10)	C(58)-C(59)	1.51(3)
N(6)-C(54)	1.325(10)	C(61)-C(63)	1.41(2)
		C(61)-C(62)	1.43(2)

Table S10. Bond angles [°] for 2.

C(10)-Pt(1)-C(1)	99.5(3)	O(7)-C(1)-O(4)	110.6(10)
C(10)-Pt(1)-N(2)	80.2(3)	O(6)-C(1)-O(4)	100.8(9)
C(1)-Pt(1)-N(2)	175.1(3)	O(5)-C(1)-O(4)	109.5(8)
C(10)-Pt(1)-N(1)	167.9(3)	O(10)-C(2)-O(9)	101.1(13)
C(1)-Pt(1)-N(1)	79.6(3)	O(10)-C(2)-O(11)	112.5(15)
N(2)-Pt(1)-N(1)	101.7(2)	O(9)-C(2)-O(11)	107.9(10)
C(10)-Pt(1)-Ag(1)	75.7(2)	O(10)-C(2)-O(8)	111.6(12)
C(1)-Pt(1)-Ag(1)	71.2(2)	O(9)-C(2)-O(8)	114.6(9)
N(2)-Pt(1)-Ag(1)	112.77(17)	O(11)-C(2)-O(8)	99.0(8)
N(1)-Pt(1)-Ag(1)	92.69(15)	C(3)-S(1)-C(4)	90.6(4)
C(19)-Pt(2)-C(28)	100.8(3)	C(12)-S(2)-C(13)	90.8(4)
C(19)-Pt(2)-N(3)	79.9(3)	C(21)-S(3)-C(22)	91.1(4)
C(28)-Pt(2)-N(3)	168.5(3)	C(31)-S(4)-C(30)	91.2(4)
C(19)-Pt(2)-N(4)	168.4(3)	C(39)-S(5)-C(40)	89.9(4)
C(28)-Pt(2)-N(4)	79.8(3)	C(48)-S(6)-C(49)	91.2(4)
N(3)-Pt(2)-N(4)	101.9(2)	C(58)-O(1)-Ag(1)	124.9(16)
C(19)-Pt(2)-Ag(1)	81.8(2)	C(55)-O(2)-Ag(2)	125.2(7)
C(28)-Pt(2)-Ag(1)	58.79(19)	C(9)-N(1)-C(5)	118.1(6)
C(28)-Pt(2)-Ag(1)	132.27(16)	C(9)-N(1)-Pt(1)	28.1(5)
N(4)-Pt(2)-Ag(1)	88.72(16)	C(5)-N(1)-Pt(1)	113.3(5)
C(19)-Pt(2)-Ag(2)	61.6(2)	C(18)-N(2)-C(14)	117.4(7)
C(28)-Pt(2)-Ag(2)	77.7(2)	C(18)-N(2)-Pt(1)	29.7(5)
N(3)-Pt(2)-Ag(2)	92.74(16)	C(14)-N(2)-Pt(1)	12.7(5)
N(4)-Pt(2)-Ag(2)	129.36(16)	C(27)-N(3)-C(23)	119.5(7)
Ag(1)-Pt(2)-Ag(2)	115.97(2)	C(27)-N(3)-Pt(2)	26.4(6)
C(37)-Pt(3)-C(46)	99.8(3)	C(23)-N(3)-Pt(2)	113.7(5)
C(37)-Pt(3)-N(5)	80.1(3)	C(36)-N(4)-C(32)	119.6(7)
C(46)-Pt(3)-N(5)	174.2(3)	C(36)-N(4)-Pt(2)	127.1(6)
C(37)-Pt(3)-N(6)	168.7(3)	C(32)-N(4)-Pt(2)	13.2(5)
C(46)-Pt(3)-N(6)	79.7(3)	C(45)-N(5)-C(41)	117.6(7)
N(5)-Pt(3)-N(6)	101.6(2)	C(45)-N(5)-Pt(3)	28.8(5)
C(37)-Pt(3)-Ag(2)	77.4(2)	C(41)-N(5)-Pt(3)	113.3(5)
C(46)-Pt(3)-Ag(2)	62.4(2)	C(54)-N(6)-C(50)	118.0(7)
N(5)-Pt(3)-Ag(2)	122.99(16)	C(54)-N(6)-Pt(3)	28.3(6)
N(6)-Pt(3)-Ag(2)	92.62(17)	C(50)-N(6)-Pt(3)	112.8(5)
C(28)-Ag(1)-O(1)	100.5(3)	C(4)-C(1)-C(2)	110.1(7)
C(28)-Ag(1)-Pt(1)	167.85(17)	C(4)-C(1)-Pt(1)	112.9(6)
O(1)-Ag(1)-Pt(1)	86.4(2)	C(2)-C(1)-Pt(1)	136.4(6)
C(28)-Ag(1)-Pt(2)	44.77(16)	C(3)-C(2)-C(1)	113.7(7)
O(1)-Ag(1)-Pt(2)	130.6(2)	C(2)-C(3)-S(1)	112.6(6)
Pt(1)-Ag(1)-Pt(2)	135.55(3)	C(1)-C(4)-C(5)	121.4(7)
O(2)-Ag(2)-C(46)	129.6(2)	C(1)-C(4)-S(1)	113.0(6)
O(2)-Ag(2)-C(19)	91.7(2)	C(5)-C(4)-S(1)	125.5(6)
C(46)-Ag(2)-C(19)	137.4(2)	N(1)-C(5)-C(6)	119.9(7)
O(2)-Ag(2)-Pt(3)	94.67(17)	N(1)-C(5)-C(4)	112.1(6)
C(46)-Ag(2)-Pt(3)	44.51(15)	C(6)-C(5)-C(4)	127.9(7)
C(19)-Ag(2)-Pt(3)	159.85(17)	C(7)-C(6)-C(5)	120.3(8)
O(2)-Ag(2)-Pt(2)	123.19(18)	C(8)-C(7)-C(6)	119.4(8)
C(46)-Ag(2)-Pt(2)	96.80(16)	C(7)-C(8)-C(9)	119.1(8)
C(19)-Ag(2)-Pt(2)	43.58(15)	N(1)-C(9)-C(8)	123.1(8)
Pt(3)-Ag(2)-Pt(2)	140.19(2)	C(13)-C(10)-C(11)	109.5(7)
O(7)-C(1)-O(6)	117.5(13)	C(13)-C(10)-Pt(1)	113.1(6)
O(7)-C(1)-O(5)	112.5(9)	C(11)-C(10)-Pt(1)	137.2(6)
O(6)-C(1)-O(5)	105.1(8)	C(12)-C(11)-C(10)	113.6(8)

(to be continued)

Table S10. Bond angles [°] for 2. (continued)

C(11)-C(12)-S(2)	112.5(7)	C(34)-C(35)-C(36)	118.5(9)
C(10)-C(13)-C(14)	20.8(7)	N(4)-C(36)-C(35)	121.8(9)
C(10)-C(13)-S(2)	113.7(6)	C(40)-C(37)-C(38)	110.1(7)
C(14)-C(13)-S(2)	25.5(6)	C(40)-C(37)-Pt(3)	113.1(6)
N(2)-C(14)-C(13)	121.4(8)	C(38)-C(37)-Pt(3)	136.5(6)
N(2)-C(14)-C(19)	112.9(7)	C(39)-C(38)-C(37)	112.5(8)
C(15)-C(14)-C(13)	25.6(8)	C(38)-C(38)-S(5)	114.2(7)
C(14)-C(15)-C(16)	19.6(9)	C(37)-C(40)-C(41)	20.1(7)
C(17)-C(16)-C(15)	18.7(9)	C(37)-C(40)-S(5)	113.3(6)
C(18)-C(17)-C(16)	18.3(9)	C(41)-C(40)-S(5)	126.6(6)
N(2)-C(18)-C(17)	24.3(8)	N(5)-C(41)-C(42)	121.4(8)
C(22)-C(19)-C(20)	10.3(7)	N(5)-C(41)-C(40)	113.3(7)
C(22)-C(19)-Pt(2)	13.4(6)	C(42)-C(41)-C(40)	25.2(8)
C(20)-C(19)-Pt(2)	34.5(6)	C(43)-C(42)-C(41)	19.8(9)
C(22)-C(19)-Ag(2)	108.2(5)	C(42)-C(42)-C(44)	18.9(9)
C(20)-C(19)-Ag(2)	103.2(5)	C(45)-C(44)-C(43)	117.6(9)
Pt(2)-C(19)-Ag(2)	74.9(2)	N(5)-C(45)-C(44)	124.5(9)
C(21)-C(20)-C(19)	12.5(7)	C(49)-C(46)-C(47)	110.0(6)
C(20)-C(21)-S(3)	13.0(6)	C(49)-C(46)-Pt(3)	113.0(5)
C(19)-C(21)-C(23)	19.5(7)	C(47)-C(46)-Pt(3)	155.9(5)
C(19)-C(22)-S(3)	13.1(6)	C(49)-C(46)-Ag(2)	109.4(5)
C(23)-C(22)-S(3)	27.2(6)	C(47)-C(46)-Ag(2)	101.4(4)
N(3)-C(23)-C(24)	20.7(8)	Pt(3)-C(46)-Ag(2)	73.1(2)
N(3)-C(23)-C(22)	13.1(6)	C(48)-C(47)-C(46)	113.7(7)
C(24)-C(23)-C(22)	26.2(8)	C(47)-C(48)-S(6)	12.3(6)
C(25)-C(24)-C(23)	19.8(9)	C(46)-C(49)-C(50)	20.8(7)
C(26)-C(25)-C(24)	118.1(8)	C(46)-C(49)-S(6)	112.9(6)
C(25)-C(26)-C(27)	20.7(9)	C(50)-C(49)-S(6)	26.4(6)
N(3)-C(27)-C(26)	21.0(9)	N(6)-C(50)-C(51)	20.5(7)
C(31)-C(28)-C(29)	109.6(6)	N(6)-C(50)-C(49)	113.1(6)
C(31)-C(28)-Pt(2)	13.4(5)	C(51)-C(50)-C(49)	26.4(7)
C(29)-C(28)-Pt(2)	34.5(5)	C(52)-C(51)-C(50)	20.7(9)
C(31)-C(28)-Ag(1)	107.1(5)	C(51)-C(52)-C(53)	19.0(9)
C(29)-C(28)-Ag(1)	104.6(5)	C(52)-C(53)-C(54)	18.4(9)
Pt(2)-C(28)-Ag(1)	76.4(2)	N(6)-C(54)-C(53)	23.3(9)
C(30)-C(29)-C(28)	13.6(7)	O(2)-C(55)-C(57)	121.9(10)
C(29)-C(30)-S(4)	12.0(6)	O(2)-C(55)-C(56)	121.4(12)
C(28)-C(31)-C(32)	19.5(7)	C(57)-C(55)-C(56)	116.8(11)
C(28)-C(31)-S(4)	13.6(6)	O(1)-C(58)-C(60)	23(2)
C(32)-C(31)-S(4)	26.8(6)	O(1)-C(58)-C(59)	119(3)
N(4)-C(32)-C(33)	20.7(8)	C(60)-C(58)-C(59)	118(3)
C(43)-C(32)-C(31)	13.2(7)	O(3)-C(61)-C(63)	119.0(19)
C(34)-C(33)-C(32)	26.1(8)	O(3)-C(61)-C(62)	118(2)
C(33)-C(34)-C(35)	120.1(9)	C(63)-C(61)-C(62)	123(2)



Table S11. Anisotropic displacement parameters ( $\text{\AA}^2 \times 10^3$ ) for 2. The anisotropic displacement factor exponent takes the form:  $-2\pi^2 [h^2 a^{*2} U^{11} + \dots + 2 h k a^* b^* U^{12}]$  (continued)

	U <sup>11</sup>	U <sup>22</sup>	U <sup>33</sup>	U <sup>23</sup>	U <sup>13</sup>	U <sup>12</sup>
C(18)	49(5)	37(4)	48(5)	1(4)	4(4)	0(4)
C(19)	47(4)	59(5)	39(4)	1(3)	-1(3)	-9(3)
C(20)	52(5)	44(4)	49(5)	0(3)	8(4)	-6(4)
C(21)	73(6)	60(5)	39(4)	-15(4)	-2(4)	-10(4)
C(22)	48(5)	43(4)	51(5)	8(3)	-9(4)	-9(3)
C(23)	37(4)	43(4)	64(5)	4(4)	-12(4)	-3(3)
C(24)	45(5)	57(6)	104(8)	4(5)	-24(5)	-10(4)
C(25)	29(5)	80(7)	145(11)	-4(7)	-7(6)	-1(5)
C(26)	32(4)	79(7)	104(8)	-6(6)	19(5)	2(4)
C(27)	46(5)	56(5)	71(6)	-3(4)	14(4)	3(4)
C(28)	35(4)	35(4)	48(4)	-3(3)	-3(3)	5(3)
C(29)	40(4)	48(4)	46(4)	-5(3)	5(3)	-2(3)
C(30)	42(5)	73(6)	60(5)	-6(4)	0(4)	-7(4)
C(31)	48(4)	42(4)	43(4)	-6(3)	-3(3)	0(3)
C(32)	57(5)	41(4)	51(5)	-2(3)	-6(4)	4(4)
C(33)	75(6)	65(6)	43(5)	3(4)	-5(4)	8(5)
C(34)	112(9)	72(7)	43(5)	1(5)	2(6)	10(6)
C(35)	106(9)	70(6)	45(5)	9(4)	28(5)	2(6)
C(36)	72(6)	50(5)	50(5)	-1(4)	24(4)	2(4)
C(37)	48(4)	35(4)	50(5)	-1(3)	-10(3)	5(3)
C(38)	50(5)	50(5)	61(5)	-4(4)	-6(4)	-5(4)
C(39)	71(6)	62(6)	89(7)	2(5)	-31(5)	-24(5)
C(40)	59(5)	45(5)	57(5)	1(4)	-17(4)	3(4)
C(41)	66(5)	47(5)	41(4)	0(3)	-12(4)	4(4)
C(42)	112(9)	78(7)	50(6)	22(5)	-24(5)	-1(6)
C(43)	110(9)	90(8)	41(5)	20(5)	-2(5)	4(7)
C(44)	110(9)	64(6)	58(6)	19(5)	15(6)	2(6)
C(45)	59(5)	64(6)	47(5)	4(4)	-3(4)	-1(4)
C(46)	41(4)	33(4)	45(4)	3(3)	0(3)	-1(3)
C(47)	40(4)	40(4)	44(4)	-5(3)	0(3)	3(3)
C(48)	60(5)	62(5)	47(5)	4(4)	15(4)	4(4)
C(49)	53(5)	40(4)	37(4)	0(3)	-4(3)	1(3)
C(50)	45(4)	35(4)	53(5)	0(3)	-2(3)	-3(3)
C(51)	48(5)	75(6)	67(6)	11(5)	-20(4)	-2(4)
C(52)	44(5)	101(8)	104(9)	9(7)	-15(5)	0(5)
C(53)	50(6)	160(13)	92(9)	39(8)	8(6)	-11(7)
C(54)	47(5)	118(9)	57(6)	31(6)	7(4)	-4(5)
C(55)	101(8)	56(6)	60(6)	-5(5)	31(6)	-3(5)
C(56)	141(12)	139(12)	66(7)	-12(7)	46(8)	14(9)
C(57)	113(10)	92(9)	99(9)	-8(7)	-5(7)	25(8)
C(58)	95(13)	122(16)	730(40)	106(18)	115(19)	26(10)
C(59)	220(20)	250(30)	430(50)	0(30)	340(40)	11(16)
C(60)	120(17)	320(30)	430(50)	200(30)	-90(20)	-4(18)
C(61)	105(11)	105(11)	105(11)	-15(9)	-38(9)	-1(9)
C(62)	240(20)	320(30)	154(18)	83(19)	-29(16)	-150(20)
C(63)	173(17)	192(19)	150(16)	-54(14)	-17(13)	78(15)

-S17-

Table S11. Anisotropic displacement parameters ( $\text{\AA}^2 \times 10^3$ ) for 2. The anisotropic displacement factor exponent takes the form:  $-2\pi^2 [h^2 a^{*2} U^{11} + \dots + 2 h k a^* b^* U^{12}]$

	U <sup>11</sup>	U <sup>22</sup>	U <sup>33</sup>	U <sup>23</sup>	U <sup>13</sup>	U <sup>12</sup>
Pt(1)	43(1)	34(1)	39(1)	3(1)	-6(1)	-1(1)
Pt(2)	34(1)	36(1)	38(1)	0(1)	3(1)	-2(1)
Pt(3)	42(1)	36(1)	36(1)	1(1)	-4(1)	0(1)
Ag(1)	63(1)	34(1)	70(1)	3(1)	1(1)	3(1)
Ag(2)	72(1)	35(1)	50(1)	1(1)	14(1)	1(1)
Cl(1)	66(2)	99(2)	74(2)	-12(2)	-2(1)	-11(1)
Cl(2)	57(1)	120(2)	59(2)	-10(1)	15(1)	-14(2)
S(1)	47(1)	62(1)	69(2)	4(1)	-11(1)	4(1)
S(2)	86(2)	95(2)	64(2)	-14(1)	-34(1)	1(2)
S(3)	69(2)	80(2)	58(1)	-12(1)	-18(1)	-13(1)
S(4)	46(1)	79(2)	70(2)	-13(1)	-5(1)	-5(1)
S(5)	84(2)	79(2)	76(2)	-1(1)	-41(1)	-11(1)
S(6)	70(1)	60(1)	40(1)	2(1)	-6(1)	2(1)
O(1)	108(7)	86(6)	166(9)	-9(6)	67(7)	-4(5)
O(2)	110(6)	83(5)	68(5)	-7(4)	31(4)	-12(4)
O(3)	204(13)	133(10)	159(11)	-28(8)	-12(9)	-9(9)
O(4)	264(16)	127(10)	175(12)	-55(8)	-22(11)	-31(10)
O(5)	88(6)	222(12)	129(8)	-14(8)	-41(7)	-4(7)
O(6)	86(8)	184(13)	325(18)	-32(12)	4(9)	24(8)
O(7)	490(30)	390(20)	55(7)	68(10)	-48(11)	-230(20)
O(8)	119(8)	208(13)	235(13)	-11(10)	87(9)	-72(9)
O(9)	238(14)	248(16)	97(8)	-27(8)	79(9)	-25(12)
O(10)	209(18)	590(40)	300(20)	220(30)	-126(16)	40(20)
O(11)	222(16)	219(16)	440(30)	-214(18)	189(18)	-129(13)
N(1)	48(4)	41(3)	36(3)	6(3)	-3(3)	-1(3)
N(2)	43(4)	47(4)	57(4)	0(3)	-5(3)	-3(3)
N(3)	34(3)	40(3)	59(4)	2(3)	5(3)	-4(3)
N(4)	53(4)	41(3)	33(3)	5(3)	6(3)	1(3)
N(5)	60(4)	40(3)	36(3)	0(3)	3(3)	6(3)
N(6)	43(4)	56(4)	42(4)	4(3)	-5(3)	2(3)
C(1)	49(4)	41(4)	42(4)	7(3)	-4(3)	-1(3)
C(2)	52(5)	51(5)	47(5)	1(4)	1(4)	3(4)
C(3)	54(5)	68(6)	56(5)	2(4)	5(4)	13(4)
C(4)	46(4)	42(4)	47(4)	-4(3)	-5(3)	3(3)
C(5)	38(4)	41(4)	51(5)	4(3)	-8(3)	1(3)
C(6)	62(5)	54(5)	55(5)	3(4)	-18(4)	-2(4)
C(7)	75(6)	84(7)	36(5)	2(4)	-17(4)	-1(5)
C(8)	78(7)	83(7)	40(5)	3(4)	3(4)	1(5)
C(9)	52(5)	57(5)	53(5)	16(4)	0(4)	-2(4)
C(10)	47(4)	40(4)	48(4)	5(3)	-7(3)	-2(3)
C(11)	68(6)	51(5)	51(5)	-8(4)	-5(4)	4(4)
C(12)	80(7)	57(5)	65(6)	-17(4)	-11(5)	12(5)
C(13)	63(5)	52(5)	51(5)	-6(4)	-13(4)	1(4)
C(14)	51(5)	55(5)	57(5)	6(4)	-16(4)	-1(4)
C(15)	68(7)	105(8)	70(7)	-6(6)	-23(5)	22(6)
C(16)	50(6)	115(10)	113(10)	3(8)	-10(6)	20(6)
C(17)	51(5)	83(7)	62(6)	3(5)	7(4)	9(5)

(to be continued)

-S16-

Table S12. Hydrogen coordinates ( $\times 10^4$ ) and isotropic displacement parameters ( $\text{\AA}^2 \times 10^{-3}$ ) for **2**.

	x	y	z	U(eq)
H(1)	8118	1468	1156	50
H(2)	9454	1289	1681	59
H(3)	8553	1978	4528	57
H(4)	7692	2282	5545	65
H(5)	6408	2579	5225	67
H(6)	5967	2538	3911	54
H(7)	7074	1310	597	54
H(8)	6128	1172	-476	67
H(9)	4060	2533	855	81
H(10)	3497	3166	1776	93
H(11)	4269	3452	2878	65
H(12)	5523	3044	3086	52
H(13)	6543	557	4040	48
H(14)	7234	873	5232	57
H(15)	10052	288	4017	69
H(16)	10987	-32	3067	85
H(17)	10504	-325	1813	72
H(18)	9148	-247	1504	58
H(19)	5787	-86	3386	44
H(20)	4588	-422	2730	58
H(21)	5956	-139	-97	61
H(22)	6960	68	-1018	76
H(23)	8230	337	-588	73
H(24)	8526	345	796	57
H(25)	9053	-1043	3291	54
H(26)	10078	-911	4292	75
H(27)	8622	-2278	6274	80
H(28)	7681	-2894	6776	80
H(29)	6601	-3206	5915	78
H(30)	6441	-2768	4695	57
H(31)	8563	-1252	2216	42
H(32)	8116	-1134	851	56
H(33)	5155	-1719	1656	63
H(34)	4077	-1987	2404	83
H(35)	4295	-2240	3743	101
H(36)	5614	-2186	4260	74
H(37)	6221	-126	6329	115
H(38)	5828	158	5599	115
H(39)	5513	-413	5892	115
H(40)	7443	-1014	5576	101
H(41)	7753	-441	5284	101
H(42)	7416	-499	6130	101
H(43)	4477	2098	3626	357
H(44)	3691	1817	3339	357
H(45)	4136	1591	4081	357
H(46)	3837	1285	2183	266
H(47)	4704	1280	1866	266
H(48)	4363	756	2280	266
H(49)	898	1487	2183	236
H(50)	1337	918	2174	236
H(51)	1533	1351	2829	236
H(52)	2319	906	1105	172
H(53)	2315	1469	655	172
H(54)	3016	1325	1227	172

- S18 -

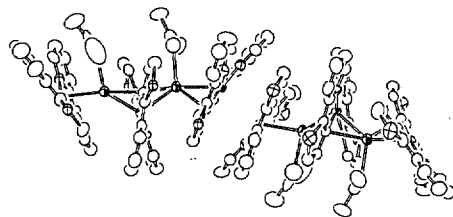


Figure S1. Stacking view of **2**

- S19 -