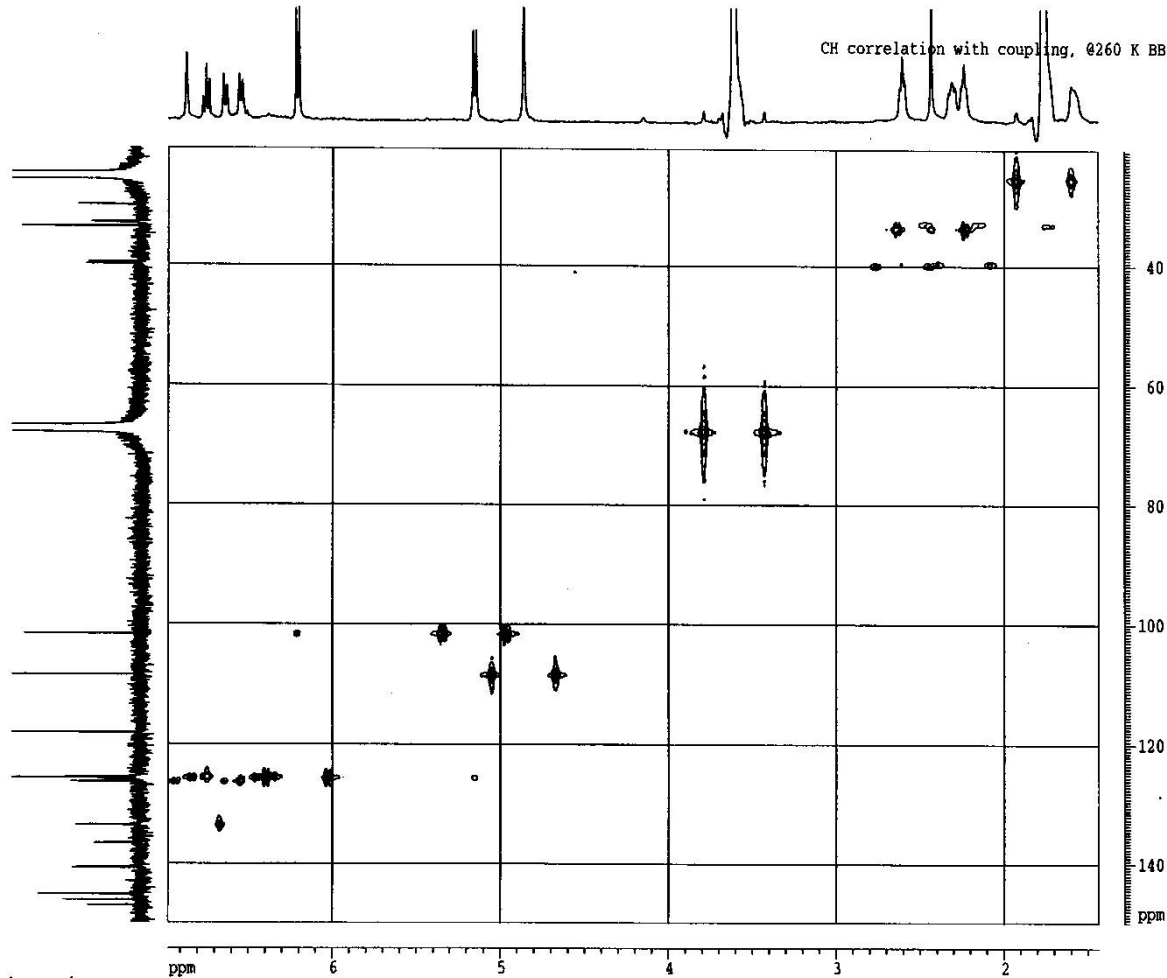


HsACSE with coupling of 2a

CH correlation with coupling, @260 K BBI, pl=5.47, t1=1



```

Current Data Parameters
NAME: 4pyrrol-3ol
EXPNO: 3
PROCNO: 3

F2 - Acquisition Parameters
Date_: 20020121
Time: 13.47
INSTRUM: zgpg30
PROBHD: 5 mm BBI101
PULPROG: zgpg30
TD: 131072
SOLVENT: THF
NS: 16
DS: 4
SWH: 2216.152 Hz
FIDRES: 0.164957 Hz
AQ: 0.231044 sec
RG: 1538
DM: 225.648 mm
DE: 1.00 mm
TE: 300.2 K
CQPP1: 2.000000
CQPP2: 145.000000
CQPP3: 0.000000
d1: 0.000018 sec
d2: 1.000000 sec
d3: 0.001728 sec
d4: 0.000000 sec
d5: 0.000000 sec
d6: 0.000000 sec
d7: 0.0012124 sec
d8: 0.0012078 sec
d9: 0.0011843 sec
JAN: 0.000000 sec
J1: 250

===== CHANNEL f1 =====
NUC1: 13C
P1: 5.47 mm
PL1: 19.20 dB
PL2: -6.00 dB
PL3: -6.00 dB
PL4: -6.00 dB
SFO1: 101.62536 MHz

===== CHANNEL f2 =====
NUC2: 13C
P2: 16.00 mm
PL1: 19.20 dB
PL2: -6.00 dB
PL3: -6.00 dB
SFO2: 101.62536 MHz

===== CHANNEL f3 =====
NUC3: 1H
P3: 10.00 mm
PL1: 19.20 dB
PL2: -6.00 dB
PL3: -6.00 dB
SFO3: 500.136300 MHz

F1 - Acquisition parameters
NUC1: 13C
NUC2: 13C
NUC3: 1H
TD: 512
SFO1: 101.62536 MHz
SFO2: 25.133114 MHz
SFO3: 125.760000 MHz

F2 - Processing parameters
SI: 32768
SF: 400.136300 MHz
WDW: EM
SSB: 0
GB: 0
LA: -16.00 Hz
GB: 0.4
PC: 1.00

F1 - Processing parameters
SI: 512
WDW: EM
SSB: 0
GB: 0
LA: -16.00 Hz
GB: 0.4
PC: 1.00

2D NMR plot parameters
CZ1: 14.00 cm
CZ2: 15.00 cm
FZ10: 6.75 ppm
FZ11: 3791.10 Hz
FZ12: 3.00 ppm
FZ13: 574.86 Hz
FZ14: 150.00 ppm
FZ15: 1500.00 Hz
FZ16: 20.50 ppm
FZ17: 20.00 Hz
FZ18: 0.18772 ppm/cm
FZ19: 121.1885 Hz/cm
FZ20: 0.42770 ppm/cm
FZ21: 84.0564 Hz/cm
    
```