

J | A | C | S

JOURNAL OF THE AMERICAN CHEMICAL SOCIETY

J. Am. Chem. Soc., 1997, 119(43), 10401-10412, DOI:[10.1021/ja971135g](https://doi.org/10.1021/ja971135g)

Terms & Conditions

Electronic Supporting Information files are available without a subscription to ACS Web Editions. The American Chemical Society holds a copyright ownership interest in any copyrightable Supporting Information. Files available from the ACS website may be downloaded for personal use only. Users are not otherwise permitted to reproduce, republish, redistribute, or sell any Supporting Information from the ACS website, either in whole or in part, in either machine-readable form or any other form without permission from the American Chemical Society. For permission to reproduce, republish and redistribute this material, requesters must process their own requests via the RightsLink permission system. Information about how to use the RightsLink permission system can be found at <http://pubs.acs.org/page/copyright/permissions.html>



ACS Publications

MOST TRUSTED. MOST CITED. MOST READ.

Copyright © 1997 American Chemical Society

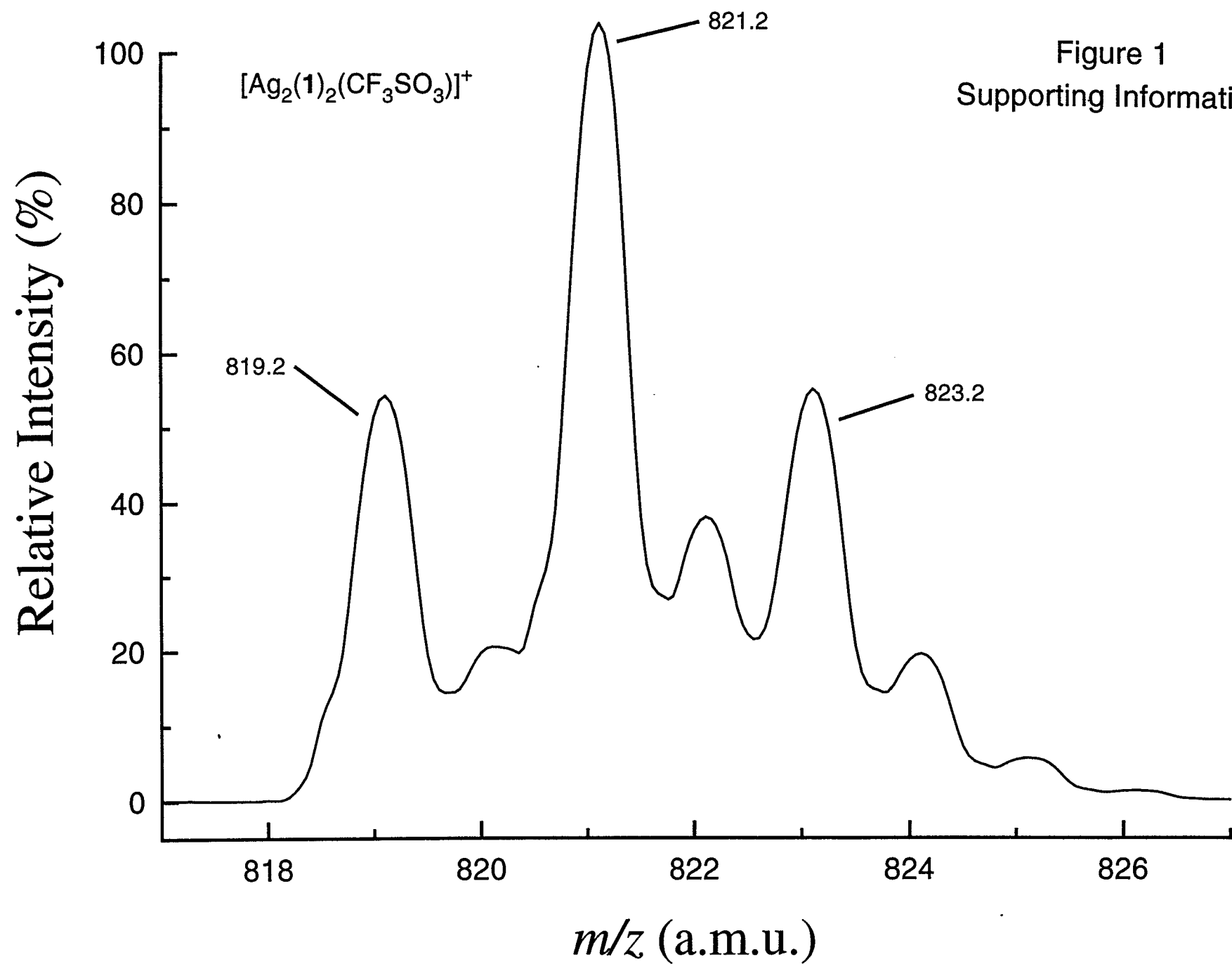
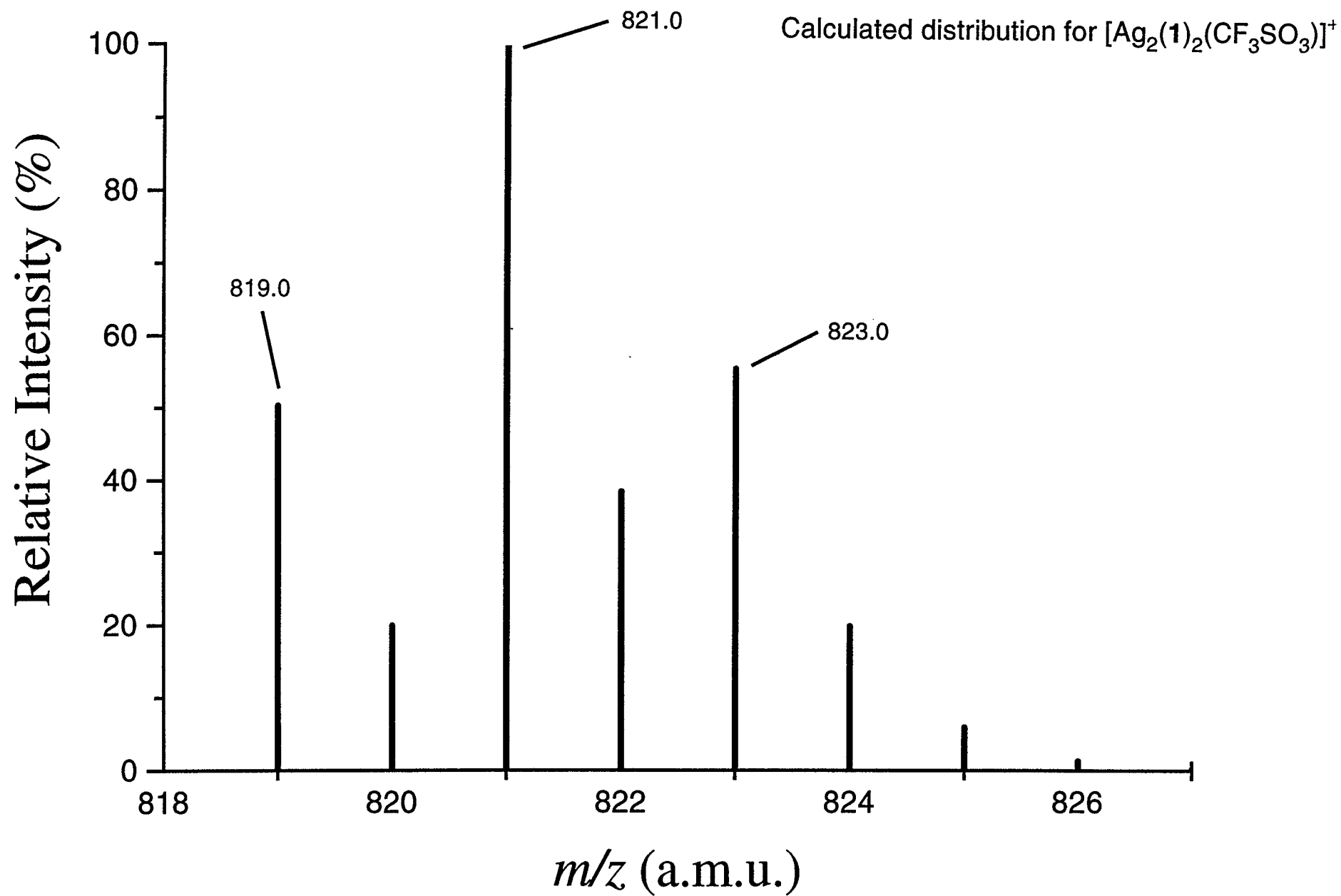
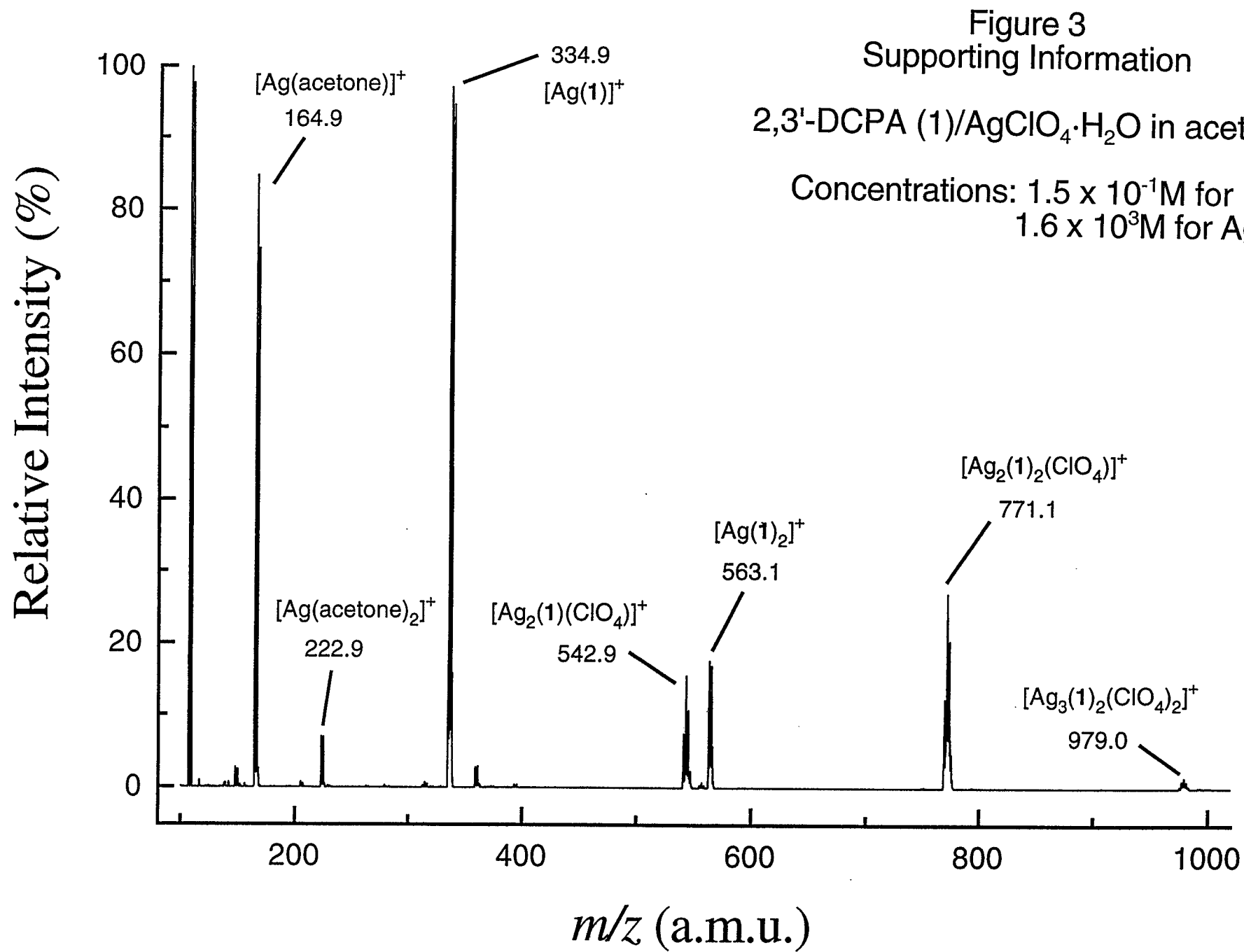


Figure 1
Supporting Information

Figure 2
Supporting Information



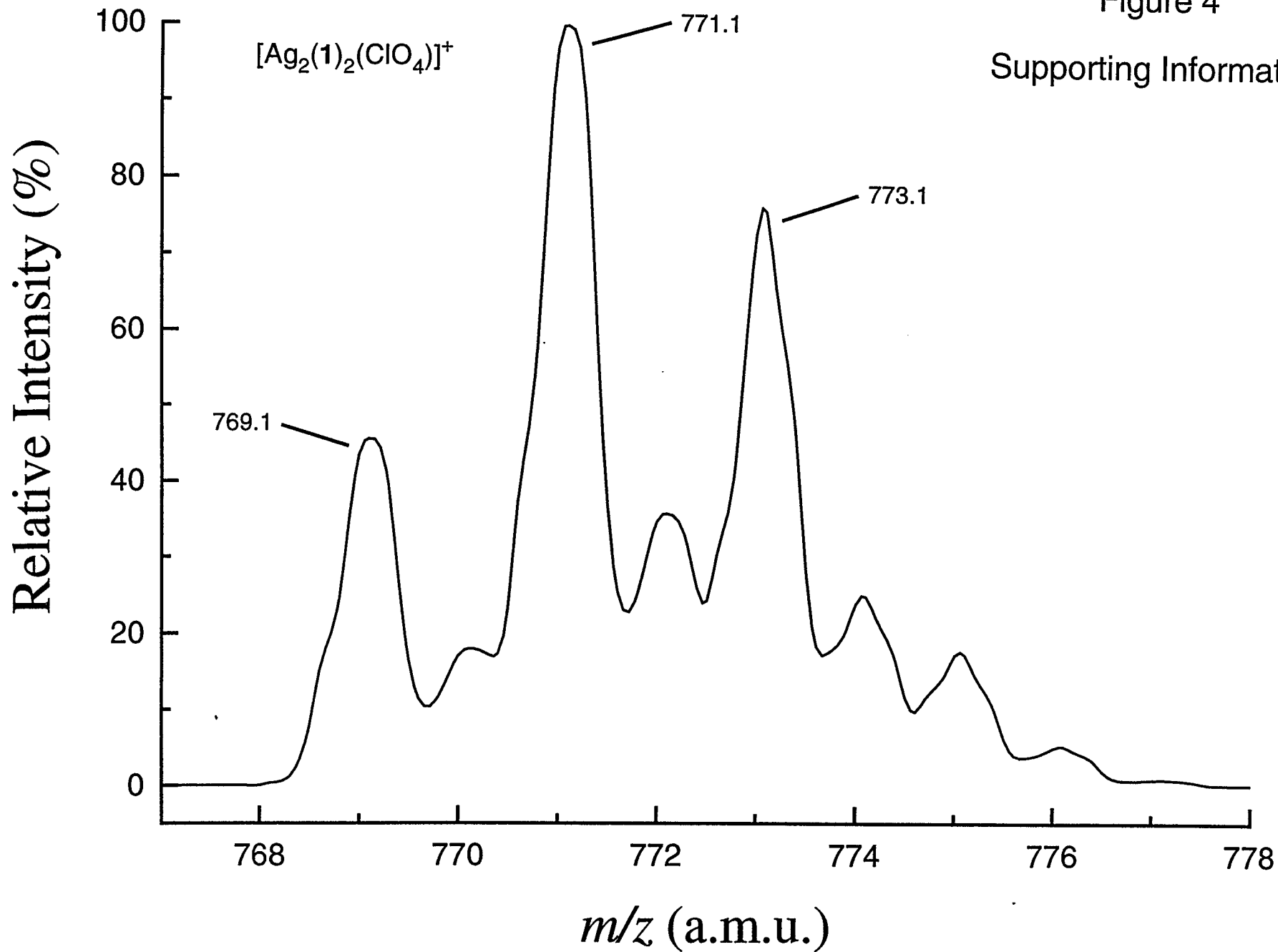
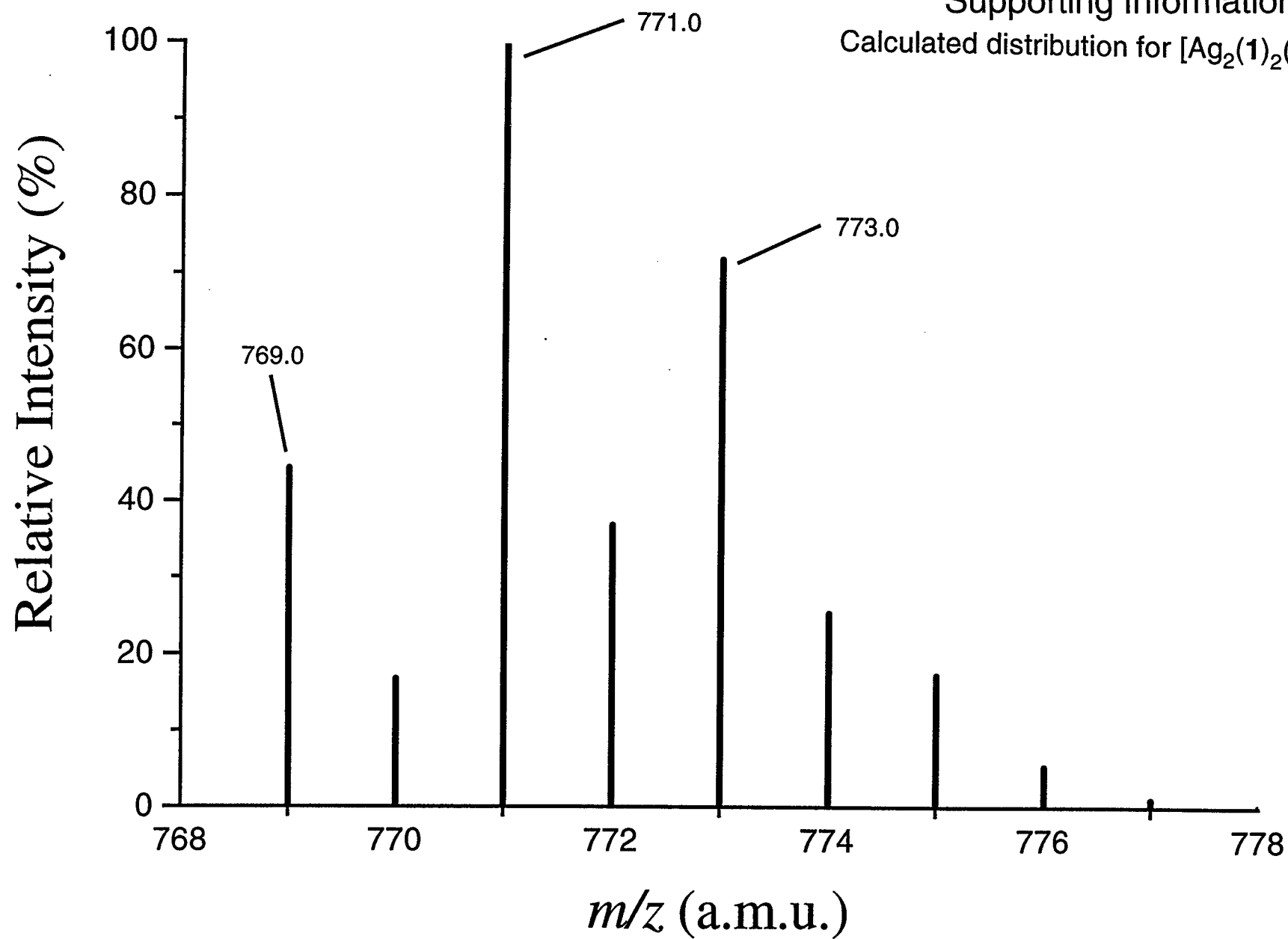


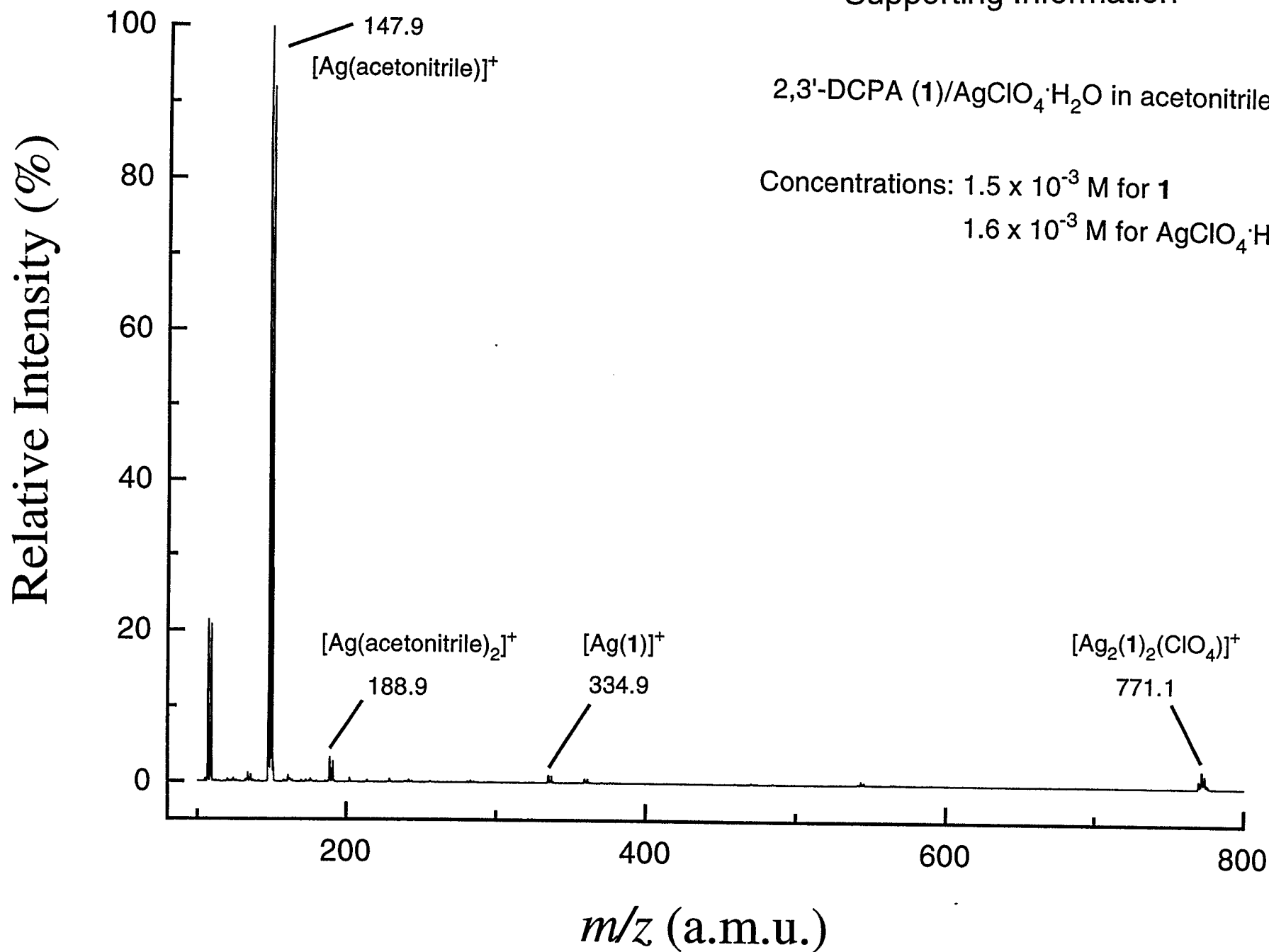
Figure 4
Supporting Information

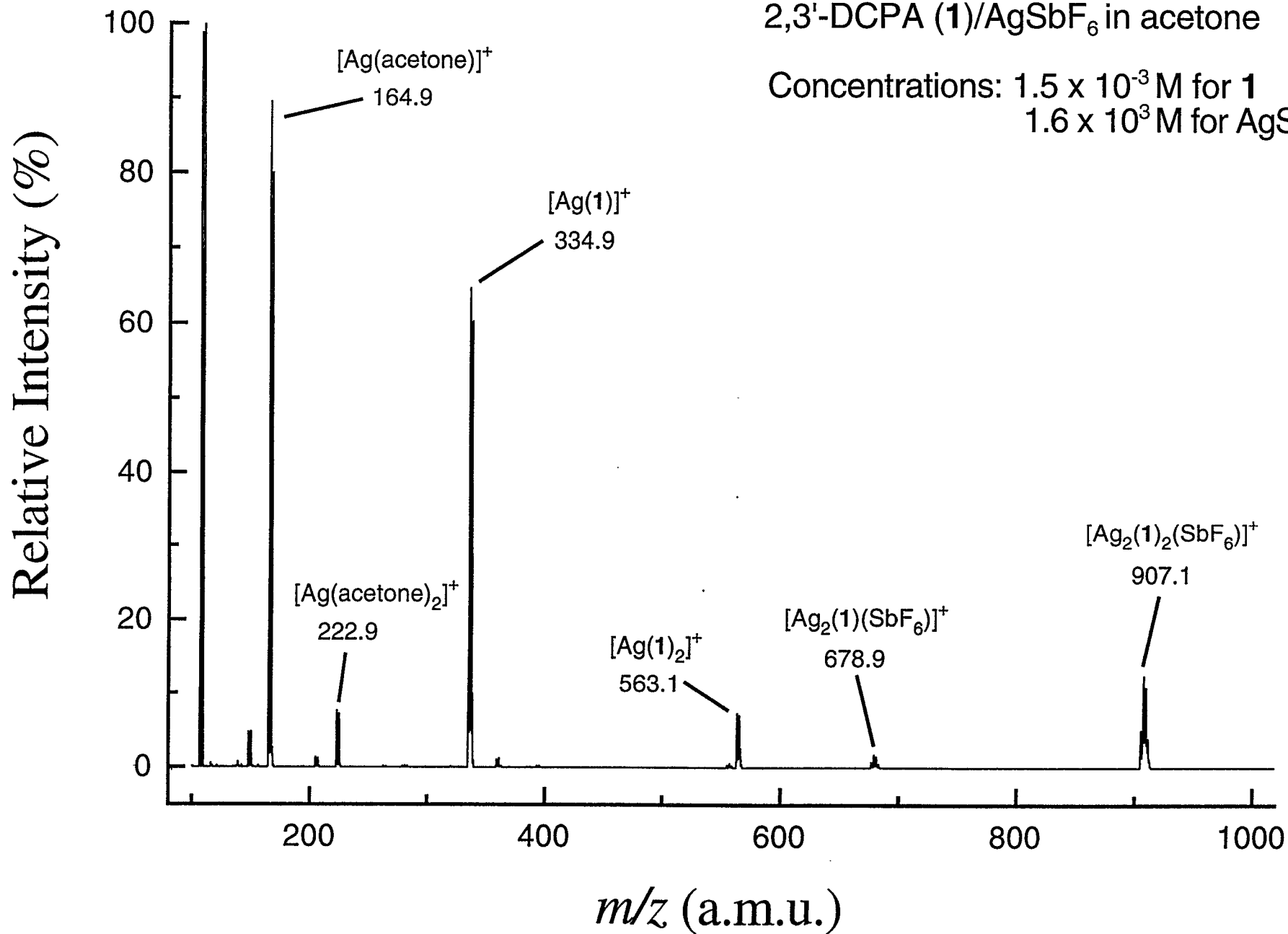
Figure 5

Supporting Information
Calculated distribution for $[\text{Ag}_2(1)_2(\text{ClO}_4)]^+$

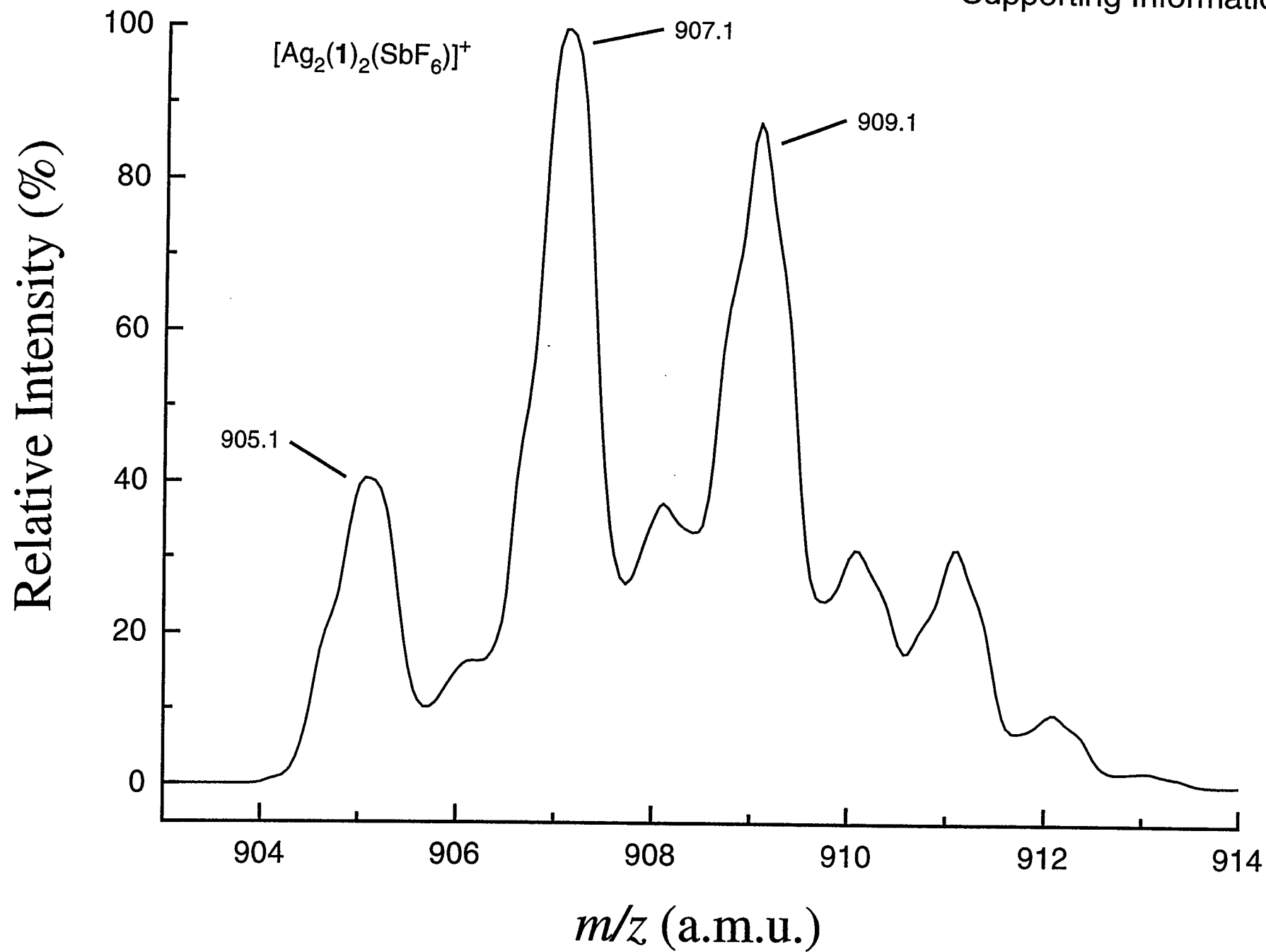


Supporting Information

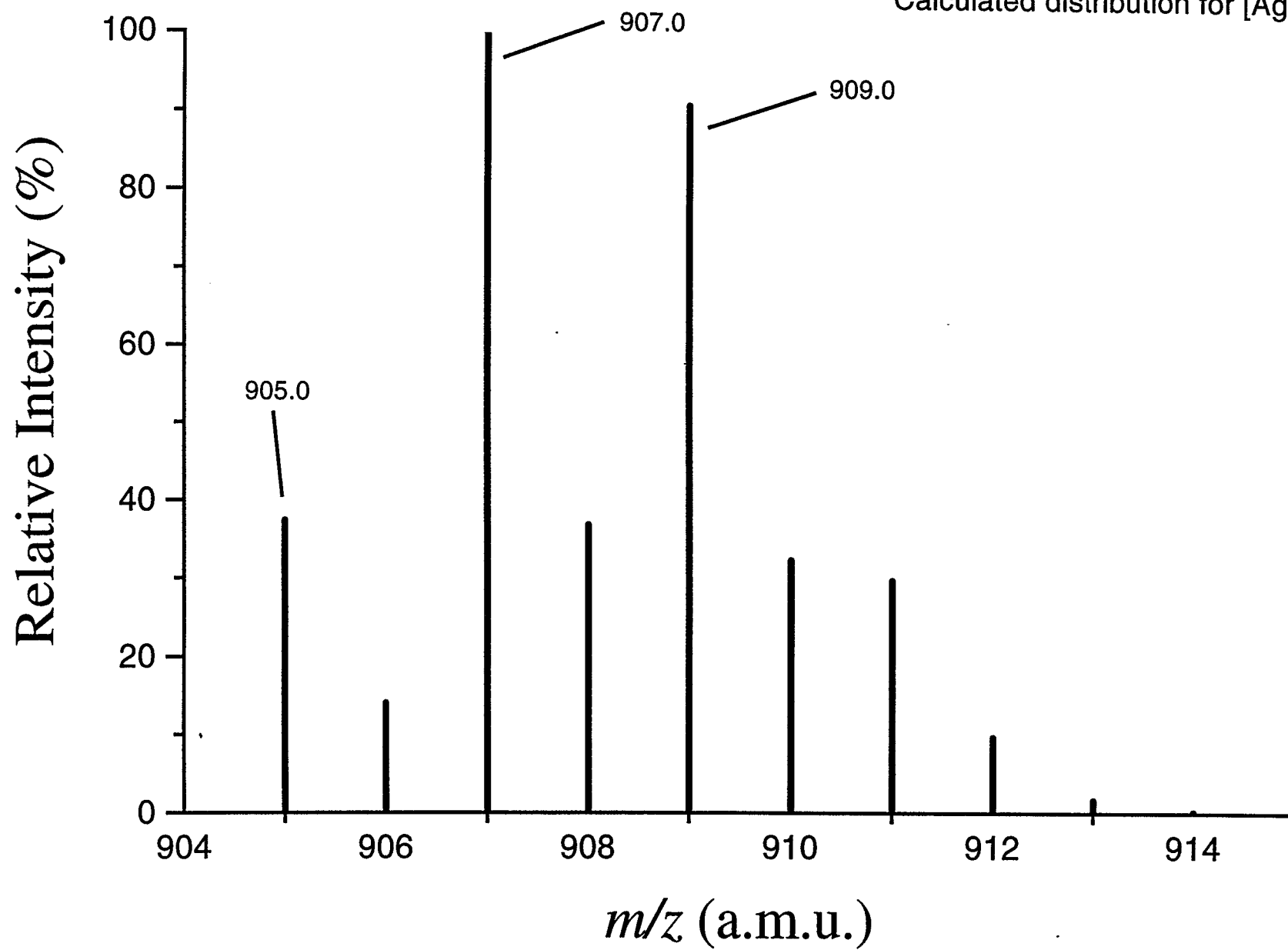
2,3'-DCPA (1)/AgClO₄·H₂O in acetonitrileConcentrations: 1.5 × 10⁻³ M for 11.6 × 10⁻³ M for AgClO₄·H₂O

2,3'-DCPA (1)/AgSbF₆ in acetoneConcentrations: 1.5×10^{-3} M for 1
 1.6×10^{-3} M for AgSbF₆

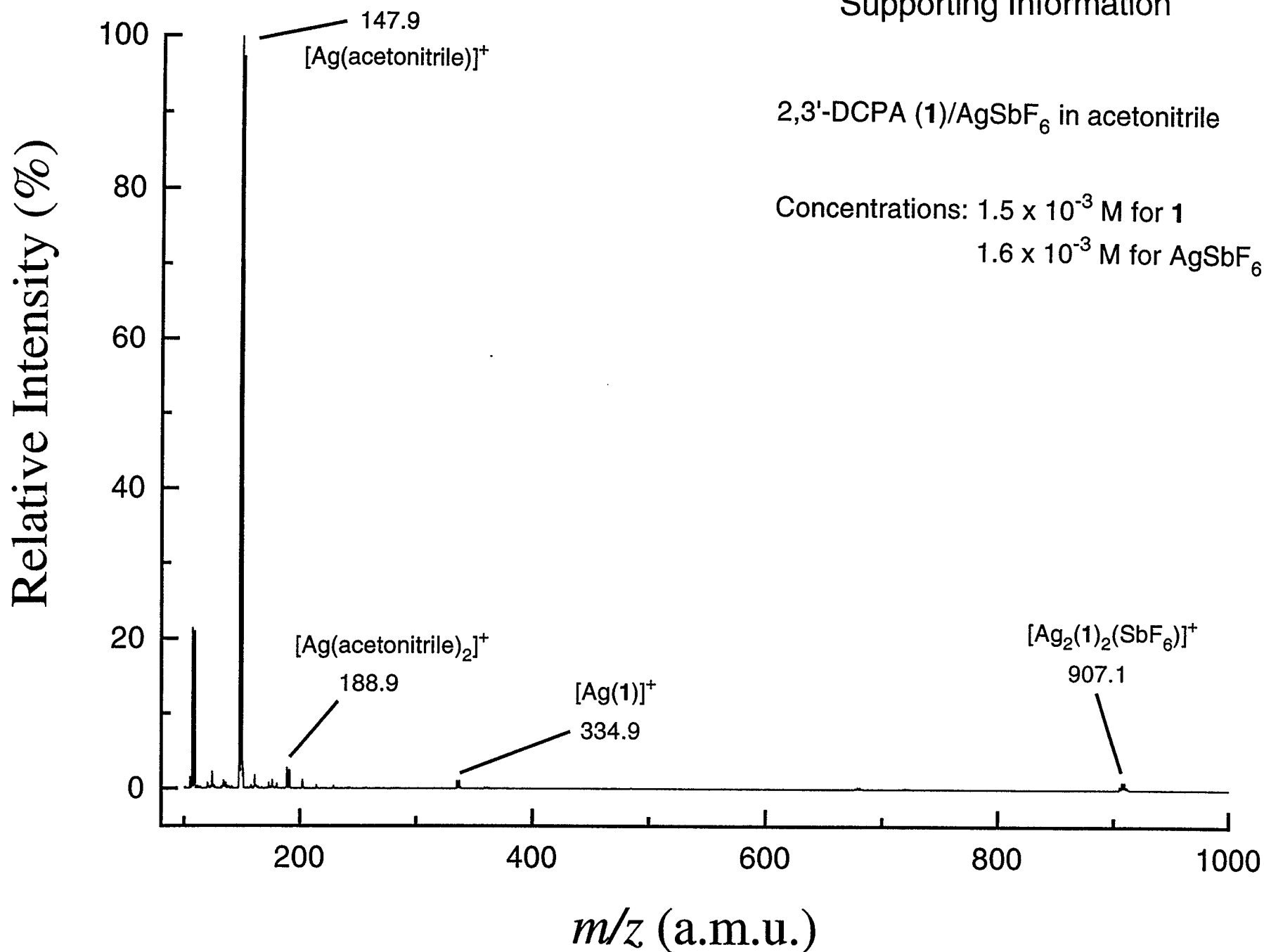
Supporting Information



Supporting Information
Calculated distribution for $[\text{Ag}_2(1)_2(\text{SbF}_6)]^+$

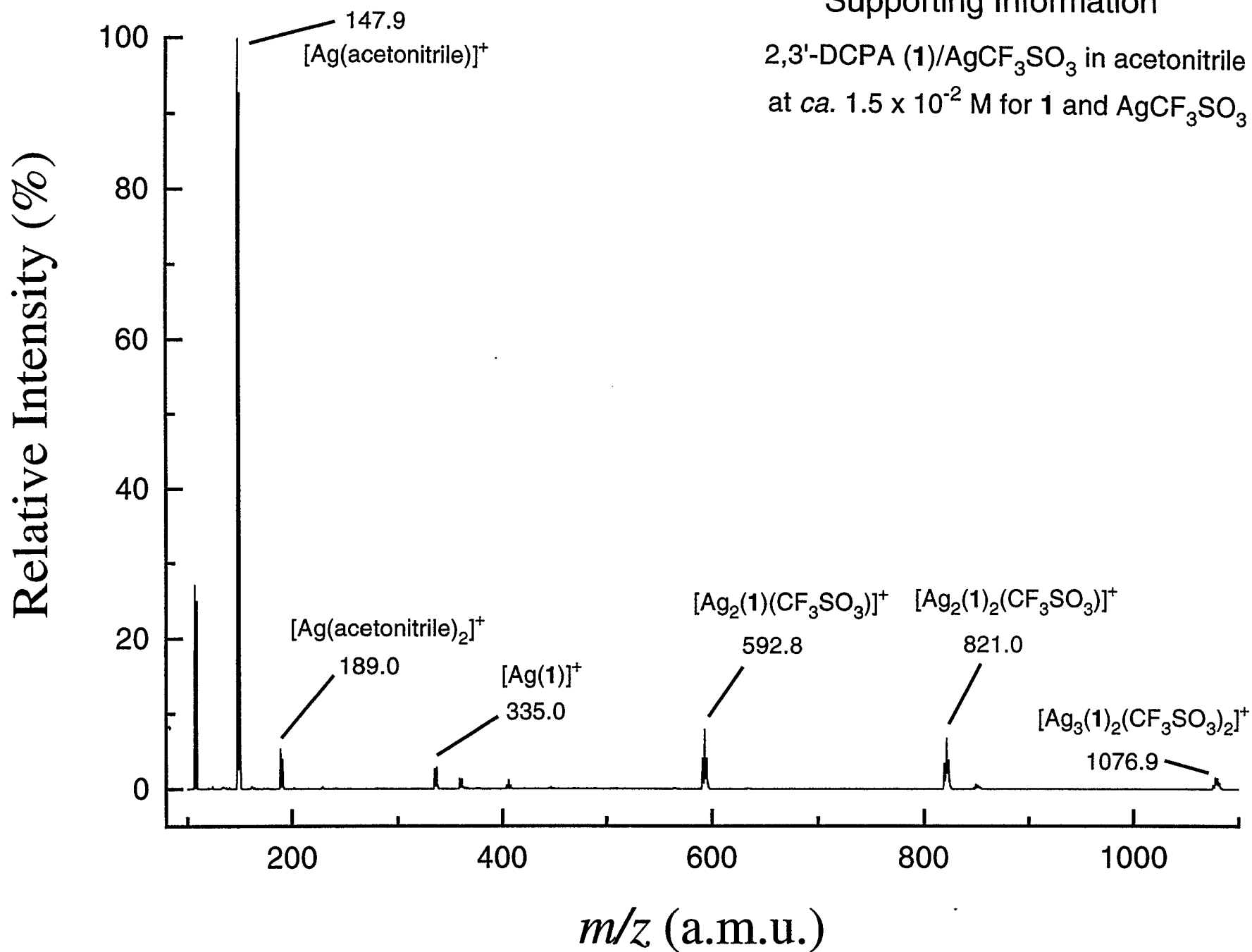


Supporting Information

2,3'-DCPA (**1**)/AgSbF₆ in acetonitrileConcentrations: 1.5×10^{-3} M for **1** 1.6×10^{-3} M for AgSbF₆

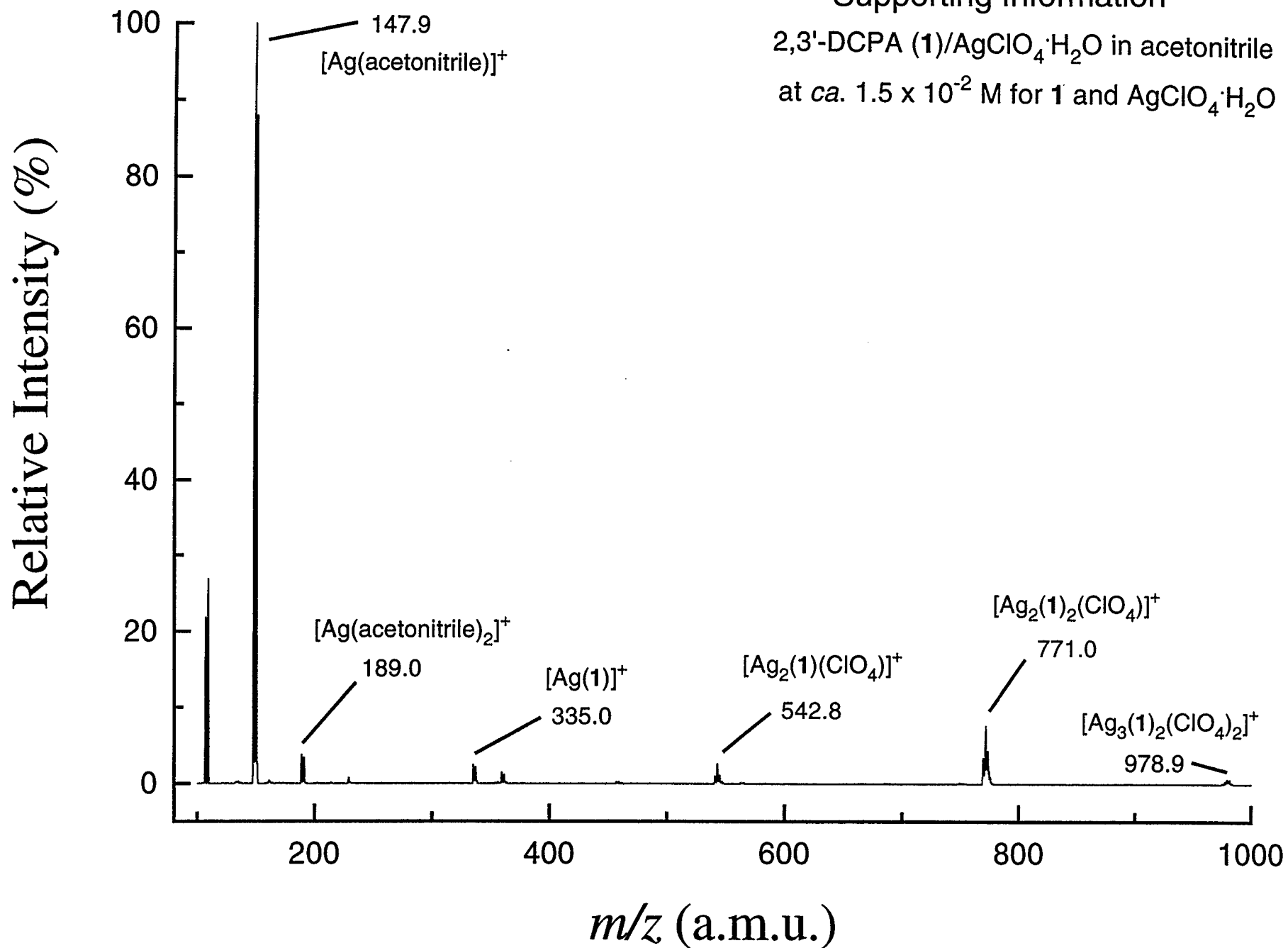
Supporting Information

2,3'-DCPA (1)/AgCF₃SO₃ in acetonitrile
at ca. 1.5 × 10⁻² M for 1 and AgCF₃SO₃



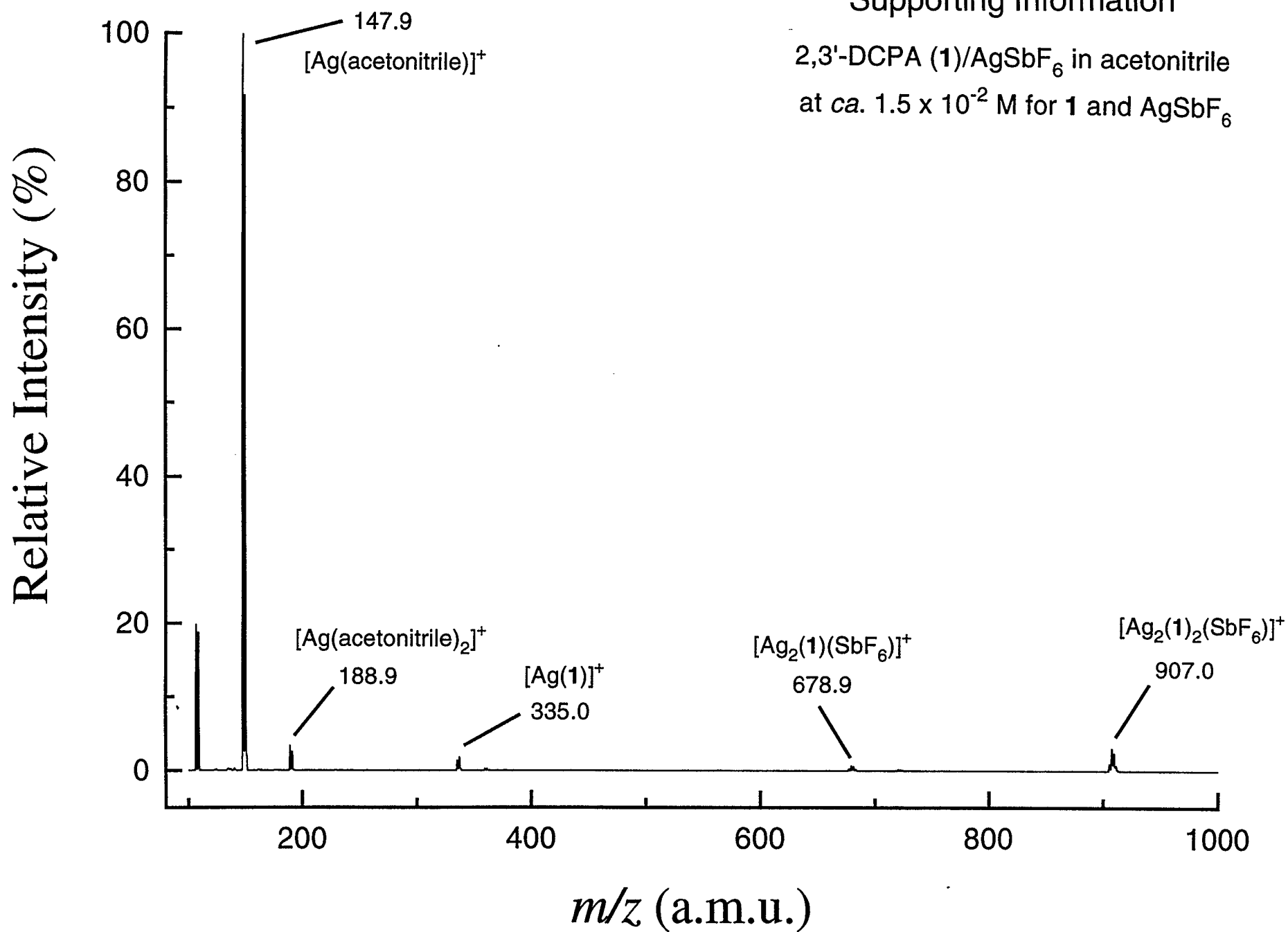
Supporting Information

2,3'-DCPA (**1**)/AgClO₄·H₂O in acetonitrile
at ca. 1.5 × 10⁻² M for **1** and AgClO₄·H₂O



Supporting Information

2,3'-DCPA (1)/AgSbF₆ in acetonitrile
at ca. 1.5 x 10⁻² M for 1 and AgSbF₆



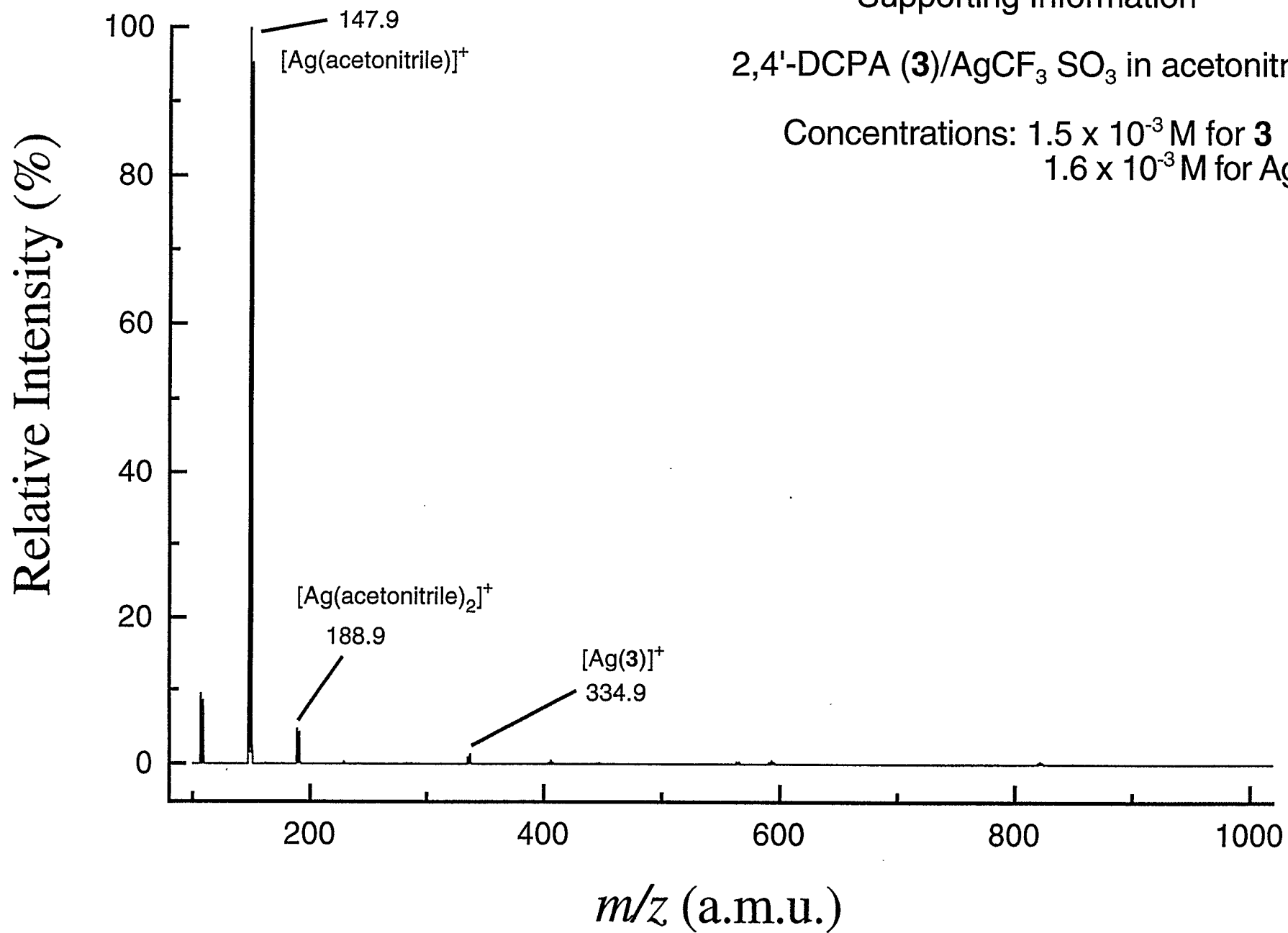


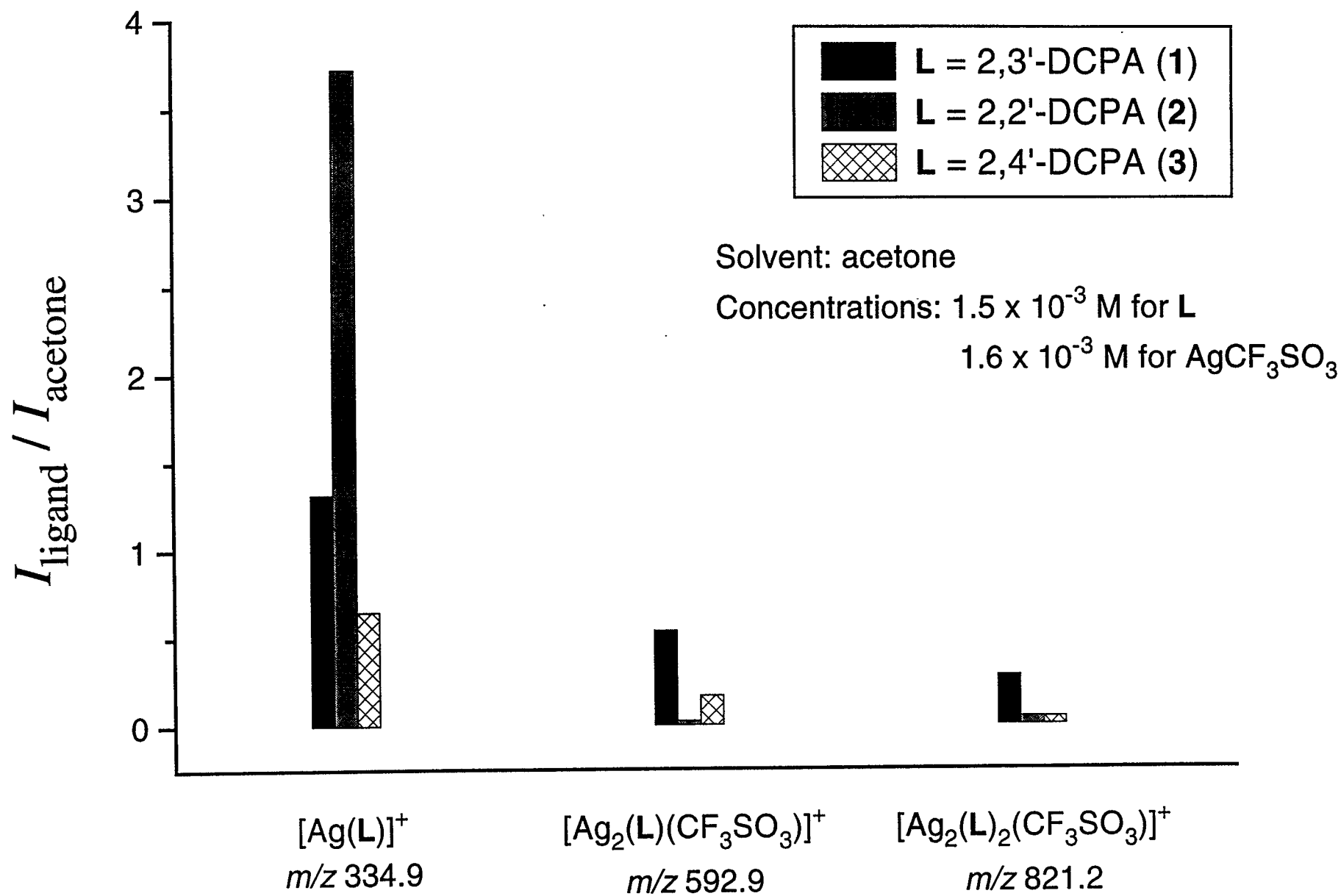
Figure 15
Supporting Information

Table S1. Crystal data and structure refinement for 4 (117a).

Empirical formula	C17 H8 Ag F3 N2 O3 S
Formula weight	485.18
Temperature	198(2) K
Wavelength	0.71073 Å
Crystal system	Triclinic
Space group	P-1
Unit cell dimensions	a = 9.1222(2) Å alpha = 63.6960(10)
deg	
from 3205 reflns with	b = 10.1711(2) Å beta = 84.25 deg
89.6980(10) deg	c = 10.53690(10) Å gamma =
4<=theta<=28	V = 871.17(3) Å ³ Z = 2
Density (calculated)	1.850 Mg/m ³
Absorption coefficient	1.328 mm ⁻¹
Crystal size	0.12 x 0.14 x 0.36 mm
Theta range for data collection	2.17 to 28.27 deg
Index ranges	-11<=h<=12, -13<=k<=8, -14<=l<=12
Collection method	\w scans
Reflections collected	5652 [R(int) = 0.0242]
Independent reflections	3907 [3462 obs, I >2sigma(I)]
Absorption correction	Integration
Max. and min. transmission	0.8691 and 0.6946
Refinement (shift/err=-0.001)	Full-matrix least-squares on F ²
Data / restraints / parameters	3907 / 0 / 276
Goodness-of-fit on F ² .	1.143
Final R indices (obs data)	R1 = 0.0334, wR2 = 0.0666
R indices (all data)	R1 = 0.0424, wR2 = 0.0739
calc w=1/[\s^2(Fo^2)+(0.0000P)^2+1.2660P] where P=(Fo^2+2Fc^2)/3	

Largest diff. peak and hole 0.381 and -0.388 e.A⁻³

Table S2. Atomic coordinates ($\times 10^4$) and equivalent isotropic displacement parameters ($\text{\AA}^2 \times 10^3$) for 4. $U(\text{eq})$ is defined as one third of the trace of the orthogonalized U_{ij} tensor

	x	y	z	U(eq)
Ag(1)	8318(1)	8139(1)	-4(1)	41(1)
S(1)	12065(1)	8774(1)	-740(1)	31(1)
F(1)	14934(2)	18692(2)	-847(2)	50(1)
F(2)	16205(2)	13362(2)	-546(2)	56(1)
F(3)	13851(3)	18378(3)	-8822(2)	65(1)
O(1)	7765(3)	9656(2)	1236(2)	43(1)
O(2)	10927(2)	8050(3)	437(2)	45(1)
O(3)	7877(3)	11677(3)	-8148(2)	46(1)
N(1)	7190(3)	6059(3)	1443(3)	47(1)
N(2)	8649(3)	9753(3)	-2251(3)	39(1)
C(1)	14340(3)	16227(3)	-3297(3)	29(1)
C(2)	15290(3)	16962(3)	-2850(3)	34(1)
C(3)	16103(4)	18187(4)	-3849(4)	37(1)
C(4)	15978(3)	18671(3)	-5283(3)	36(1)
C(5)	15051(4)	17932(3)	-5736(3)	34(1)
C(6)	14204(3)	16699(3)	-4752(3)	29(1)
C(7)	13492(3)	14947(3)	-2262(3)	36(1)
C(8)	13235(3)	15887(3)	-5161(3)	33(1)
C(9)	12400(3)	15131(3)	-5383(3)	33(1)
C(10)	11395(3)	14161(3)	-5561(3)	30(1)
C(11)	11000(4)	14415(3)	-6898(3)	35(1)
C(12)	10058(4)	13438(4)	-7035(3)	36(1)
C(13)	9461(3)	12203(3)	-5850(3)	31(1)
C(14)	9828(3)	11959(3)	-4509(3)	28(1)
C(15)	10796(3)	12924(3)	-4357(3)	31(1)
C(16)	9166(3)	10723(3)	-3255(3)	31(1)
C(1T)	3748(3)	8088(4)	80(3)	37(1)

Table S3. Anisotropic displacement parameters ($\text{\AA}^2 \times 10^3$) for 4.
 The anisotropic displacement factor exponent takes the form:
 $-2 \pi^2 [h^2 a^2 U_{11} + \dots + 2 h k a^* b^* U_{12}]$

	U11	U22	U33	U23	U13	U12
Ag(1)	36(1)	36(1)	37(1)	-7(1)	1(1)	-8(1)
S(1)	27(1)	34(1)	27(1)	-9(1)	-4(1)	-2(1)
F(1)	27(1)	60(1)	56(1)	-19(1)	1(1)	-8(1)
F(2)	43(1)	41(1)	64(1)	-6(1)	-8(1)	8(1)
F(3)	57(1)	103(2)	48(1)	-42(1)	-24(1)	8(1)
O(1)	51(1)	32(1)	39(1)	-11(1)	-2(1)	3(1)
O(2)	29(1)	51(1)	38(1)	-6(1)	1(1)	-3(1)
O(3)	51(1)	56(2)	38(1)	-26(1)	-13(1)	-3(1)
N(1)	41(2)	41(2)	45(2)	-6(1)	-5(1)	-8(1)
N(2)	42(2)	37(1)	32(1)	-12(1)	-4(1)	-7(1)
C(1)	25(1)	24(1)	33(1)	-9(1)	-1(1)	1(1)
C(2)	36(2)	35(2)	31(2)	-14(1)	-5(1)	2(1)
C(3)	35(2)	35(2)	43(2)	-19(1)	-6(1)	-4(1)
C(4)	33(2)	29(2)	38(2)	-8(1)	1(1)	-9(1)
C(5)	38(2)	30(2)	29(2)	-9(1)	-2(1)	-2(1)
C(6)	24(1)	26(1)	38(2)	-14(1)	-6(1)	3(1)
C(7)	33(2)	34(2)	35(2)	-9(1)	-5(1)	-1(1)
C(8)	34(2)	28(1)	36(2)	-13(1)	-6(1)	2(1)
C(9)	31(2)	30(2)	37(2)	-14(1)	-5(1)	4(1)
C(10)	27(1)	27(1)	36(2)	-15(1)	-5(1)	2(1)
C(11)	38(2)	29(2)	31(2)	-10(1)	-2(1)	-1(1)
C(12)	39(2)	40(2)	29(2)	-14(1)	-7(1)	1(1)
C(13)	33(2)	30(2)	33(2)	-15(1)	-7(1)	-1(1)
C(14)	27(1)	28(1)	30(1)	-13(1)	-3(1)	2(1)
C(15)	32(2)	32(2)	31(2)	-15(1)	-7(1)	4(1)
C(16)	30(2)	33(2)	33(2)	-16(1)	-8(1)	2(1)
C(1T)	31(2)	44(2)	33(2)	-13(1)	-6(1)	0(1)

Table S4. Hydrogen coordinates ($\times 10^4$) and isotropic displacement parameters ($\text{Å}^2 \times 10^3$) for 4. Treatment of hydrogen atoms not specifically described in the refinement summary was "refall."

	x	y	z	U(eq)
H(2)	15297(37)	16634(37)	-1886(37)	39(9)
H(3)	16716(40)	18675(39)	-3527(37)	44(10)
H(4)	16554(36)	19478(37)	-5940(34)	35(9)
H(5)	15012(41)	18287(41)	-6681(40)	48(10)
H(11)	11383(38)	15288(39)	-7726(37)	42(9)
H(12)	9835(38)	13553(38)	-7925(38)	42(10)
H(13)	8839(35)	11537(34)	-5913(32)	28(8)
H(15)	11065(35)	12714(35)	-3453(35)	32(8)

Table S5. Bond lengths [Å] and angles [deg] for 4.

Ag(1)-N(1)	2.170(3)
Ag(1)-N(2)	2.193(3)
Ag(1)-O(1)	2.447(2)
Ag(1)-O(2)	2.464(2)
S(1)-O(3)#1	1.432(2)
S(1)-O(1)#2	1.447(2)
S(1)-O(2)	1.448(2)
S(1)-C(1T)#3	1.820(3)
F(1)-C(1T)#4	1.329(4)
F(2)-C(1T)#2	1.334(4)
F(3)-C(1T)#5	1.327(4)
O(1)-S(1)#2	1.447(2)
O(3)-S(1)#1	1.432(2)
N(1)-C(7)#2	1.138(4)
N(2)-C(16)	1.138(4)
C(1)-C(2)	1.391(4)
C(1)-C(6)	1.408(4)
C(1)-C(7)	1.437(4)
C(2)-C(3)	1.379(4)
C(3)-C(4)	1.384(5)
C(4)-C(5)	1.383(4)
C(5)-C(6)	1.394(4)
C(6)-C(8)	1.431(4)
C(7)-N(1)#2	1.138(4)
C(8)-C(9)	1.195(4)
C(9)-C(10)	1.434(4)
C(10)-C(15)	1.394(4)
C(10)-C(11)	1.399(4)
C(11)-C(12)	1.382(4)
C(12)-C(13)	1.384(4)
C(13)-C(14)	1.398(4)
C(14)-C(15)	1.395(4)
C(14)-C(16)	1.438(4)
C(1T)-F(3)#6	1.327(4)
C(1T)-F(1)#7	1.329(3)
C(1T)-F(2)#2	1.334(4)
C(1T)-S(1)#8	1.820(3)
N(1)-Ag(1)-N(2)	142.76(11)
N(1)-Ag(1)-O(1)	102.49(10)
N(2)-Ag(1)-O(1)	103.17(9)
N(1)-Ag(1)-O(2)	109.16(9)
N(2)-Ag(1)-O(2)	96.67(9)
O(1)-Ag(1)-O(2)	91.51(8)
O(3)#1-S(1)-O(1)#2	114.37(14)
O(3)#1-S(1)-O(2)	116.0(2)
O(1)#2-S(1)-O(2)	114.6(2)
O(3)#1-S(1)-C(1T)#3	103.4(2)
O(1)#2-S(1)-C(1T)#3	103.4(2)
O(2)-S(1)-C(1T)#3	102.64(14)
S(1)#2-O(1)-Ag(1)	130.80(13)
S(1)-O(2)-Ag(1)	120.12(13)
C(7)#2-N(1)-Ag(1)	172.5(3)
C(16)-N(2)-Ag(1)	158.6(2)
C(2)-C(1)-C(6)	121.3(3)

C(2)-C(1)-C(7)	119.7(3)
C(6)-C(1)-C(7)	118.9(3)
C(3)-C(2)-C(1)	119.4(3)
C(2)-C(3)-C(4)	120.1(3)
C(5)-C(4)-C(3)	120.7(3)
C(4)-C(5)-C(6)	120.6(3)
C(5)-C(6)-C(1)	117.9(3)
C(5)-C(6)-C(8)	122.9(3)
C(1)-C(6)-C(8)	119.2(3)
N(1)#2-C(7)-C(1)	179.4(4)
C(9)-C(8)-C(6)	174.5(3)
C(8)-C(9)-C(10)	176.6(3)
C(15)-C(10)-C(11)	119.2(3)
C(15)-C(10)-C(9)	118.6(3)
C(11)-C(10)-C(9)	122.2(3)
C(12)-C(11)-C(10)	120.7(3)
C(11)-C(12)-C(13)	120.7(3)
C(12)-C(13)-C(14)	118.8(3)
C(15)-C(14)-C(13)	121.1(3)
C(15)-C(14)-C(16)	119.0(3)
C(13)-C(14)-C(16)	119.9(3)
C(10)-C(15)-C(14)	119.4(3)
N(2)-C(16)-C(14)	179.0(3)
F(3)#6-C(1T)-F(1)#7	107.9(3)
F(3)#6-C(1T)-F(2)#2	107.9(3)
F(1)#7-C(1T)-F(2)#2	107.3(3)
F(3)#6-C(1T)-S(1)#8	111.4(2)
F(1)#7-C(1T)-S(1)#8	111.1(2)
F(2)#2-C(1T)-S(1)#8	111.0(2)

#1	-x+2, -y+2, -z-1	#2	-x+2, -y+2, -z	#3	x+1, y, z
#4	x+1, y+1, z	#5	x+1, y+1, z-1	#6	x-1, y-1, z+1
#7	x-1, y-1, z	#8	x-1, y, z		

Figure 16
Supporting Information

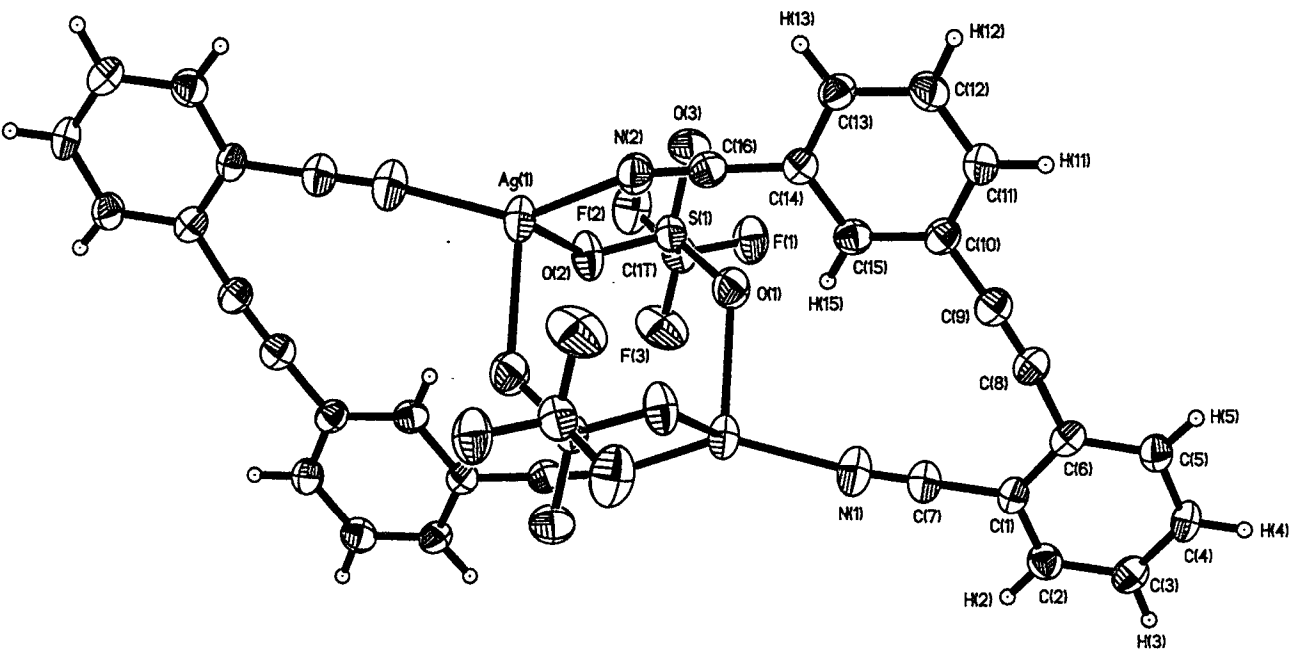


Table S6. Crystal data and structure refinement for 5 (mo3ce).

Empirical formula	C16 H8 Ag Cl N2 O4
Formula weight	435.56
Temperature	198(2) K
Wavelength	0.71073 Å
Crystal system	Triclinic
Space group	P-1
Unit cell dimensions	a = 7.5089(4) Å alpha = 69.9950(10)
deg	
from 3171 reflns with	b = 9.8145(5) Å beta = 80.16 deg
4<=theta<=28	c = 11.2200(6) Å gamma = 83.517(2) deg
	V = 764.22(7) Å ³ Z = 2
Density (calculated)	1.893 Mg/m ³
Absorption coefficient	1.517 mm ⁻¹
Crystal size	0.08 x 0.08 x 0.54 mm
Theta range for data collection	1.95 to 28.29 deg
Index ranges	-10<=h<=9, -9<=k<=13, -14<=l<=14
Collection method	\w scans
Reflections collected	5051 [R(int) = 0.0243]
Independent reflections	3474 [2921 obs, I >2sigma(I)]
Absorption correction	Semi-empirical from psi-scans
Max. and min. transmission	0.8355 and 0.7182
Refinement (shift/err=0.002)	Full-matrix least-squares on F ²
Data / restraints / parameters	3472 / 0 / 295
Goodness-of-fit on F ²	1.239
Final R indices (obs data)	R1 = 0.0429, wR2 = 0.0842
R indices (all data)	R1 = 0.0576, wR2 = 0.0957
calc w=1/[\s^2^(Fo^2^)+(0.0109P)^2^+1.5118P] where P=(Fo^2^+2Fc^2^)/3	
Largest diff. peak and hole	0.522 and -0.480 e.Å ⁻³

Table S7. Atomic coordinates ($\times 10^4$) and equivalent isotropic displacement parameters ($\text{Å}^2 \times 10^3$) for 5. $U(\text{eq})$ is defined as one third of the trace of the orthogonalized U_{ij} tensor

	x	y	z	$U(\text{eq})$
Ag(1)	2325(1)	6724(1)	3501(1)	53(1)
Cl(1A)	2465(8)	3639(6)	6214(4)	31(1)
O(1A)	2453(25)	4165(20)	4855(15)	100(6)
O(2A)	859(8)	4127(9)	6843(6)	63(3)
O(3A)	3971(9)	4148(11)	6450(8)	79(3)
O(4A)	2596(17)	2103(7)	6574(9)	86(4)
Cl(1B)	2498(11)	3549(10)	6211(8)	48(3)
O(1B)	2169(26)	4172(17)	4862(17)	42(4)
O(2B)	2224(31)	4751(12)	6681(13)	119(10)
O(3B)	4205(15)	2961(19)	6420(21)	154(9)
O(4B)	1281(23)	2533(19)	6924(14)	109(8)
N(1)	1450(5)	7845(4)	4922(3)	42(1)
N(2)	3000(5)	7281(4)	1423(3)	49(1)
C(1)	93(5)	8029(4)	7133(3)	28(1)
C(2)	264(5)	9261(4)	7450(4)	32(1)
C(3)	-433(5)	9273(4)	8671(4)	35(1)
C(4)	-1286(5)	8086(4)	9565(4)	33(1)
C(5)	-1490(5)	6865(4)	9238(3)	28(1)
C(6)	-780(5)	6839(4)	8009(3)	28(1)
C(7)	851(5)	7949(4)	5886(3)	33(1)
C(8)	-2404(5)	5635(4)	10119(3)	30(1)
C(9)	-3170(5)	4581(4)	10789(3)	28(1)
C(10)	-3995(5)	3253(4)	11544(3)	28(1)
C(12)	-5419(5)	1651(5)	13543(4)	40(1)
C(11)	-4701(5)	2978(5)	12829(3)	33(1)
C(13)	-5422(6)	582(5)	13008(4)	41(1)
C(14)	-4751(6)	836(5)	11729(4)	39(1)
C(15)	-4061(5)	2171(4)	10995(3)	30(1)
C(16)	-3444(5)	2473(4)	9653(4)	36(1)

Table S8. Anisotropic displacement parameters ($\text{\AA}^2 \times 10^3$) for 5.
 The anisotropic displacement factor exponent takes the form:
 $-2 \pi^2 [h^2 a^2 U_{11} + \dots + 2 h k a^* b^* U_{12}]$

	U11	U22	U33	U23	U13	U12
Ag(1)	66(1)	61(1)	34(1)	-21(1)	0(1)	-7(1)
Cl(1A)	42(3)	22(2)	26(2)	-3(1)	-7(2)	-4(1)
O(1A)	141(12)	94(10)	42(8)	-18(7)	24(7)	15(8)
O(2A)	42(4)	92(6)	58(4)	-39(4)	9(3)	3(3)
O(3A)	49(4)	100(8)	115(6)	-67(5)	-13(4)	-22(4)
O(4A)	133(10)	29(3)	95(6)	-17(3)	-18(6)	-9(4)
Cl(1B)	27(4)	47(4)	85(6)	-45(3)	11(3)	-12(2)
O(1B)	63(7)	33(6)	38(9)	-11(6)	-29(6)	-8(5)
O(2B)	229(30)	44(6)	109(10)	-49(7)	-56(12)	17(9)
O(3B)	42(7)	98(13)	289(23)	-11(13)	-58(10)	16(7)
O(4B)	104(12)	99(14)	96(10)	31(8)	-24(9)	-82(11)
N(1)	50(2)	45(2)	31(2)	-11(2)	-2(2)	-11(2)
N(2)	56(2)	55(2)	34(2)	-18(2)	-5(2)	7(2)
C(1)	26(2)	29(2)	27(2)	-6(1)	-6(1)	0(1)
C(2)	30(2)	30(2)	34(2)	-6(2)	-6(2)	-3(2)
C(3)	37(2)	34(2)	40(2)	-17(2)	-8(2)	-3(2)
C(4)	33(2)	37(2)	31(2)	-14(2)	-4(2)	0(2)
C(5)	24(2)	28(2)	28(2)	-6(1)	-5(1)	2(1)
C(6)	27(2)	26(2)	31(2)	-10(2)	-4(1)	0(1)
C(7)	33(2)	35(2)	30(2)	-7(2)	-5(2)	-5(2)
C(8)	27(2)	33(2)	28(2)	-9(2)	-5(1)	3(1)
C(9)	28(2)	30(2)	24(2)	-8(1)	-5(1)	5(1)
C(10)	25(2)	31(2)	24(2)	-3(1)	-6(1)	-1(1)
C(12)	34(2)	51(2)	28(2)	-3(2)	-3(2)	-7(2)
C(11)	28(2)	43(2)	27(2)	-11(2)	-5(1)	1(2)
C(13)	37(2)	34(2)	40(2)	8(2)	-9(2)	-9(2)
C(14)	40(2)	32(2)	45(2)	-10(2)	-10(2)	-3(2)
C(15)	26(2)	35(2)	27(2)	-8(2)	-8(1)	3(1)
C(16)	35(2)	38(2)	35(2)	-13(2)	-8(2)	8(2)

Table S9. Hydrogen coordinates ($\times 10^4$) and isotropic displacement parameters ($\text{Å}^2 \times 10^3$) for 5. Treatment of hydrogen atoms not specifically described in the refinement summary was "refall."

	x	y	z	U(eq)
H(2)	825(52)	10019(44)	6871(37)	30(10)
H(3)	-323(60)	10101(51)	8866(43)	48(13)
H(4)	-1758(65)	8127(54)	10375(48)	59(14)
H(6)	-894(53)	6054(45)	7776(38)	34(11)
H(11)	-4618(59)	3671(49)	13201(42)	45(12)
H(12)	-5953(56)	1542(46)	14435(42)	42(12)
H(13)	-5778(57)	-309(49)	13467(41)	41(12)
H(14)	-4739(55)	187(47)	11368(39)	36(11)

Table S10. Bond lengths [Å] and angles [deg] for 5.

Ag(1)-N(2)	2.186(3)
Ag(1)-N(1)	2.206(4)
Ag(1)-O(1B)	2.45(2)
Ag(1)-O(1A)	2.45(2)
Cl(1A)-O(3A)	1.385(8)
Cl(1A)-O(2A)	1.411(8)
Cl(1A)-O(4A)	1.418(8)
Cl(1A)-O(1A)	1.43(2)
Cl(1B)-O(3B)	1.368(13)
Cl(1B)-O(4B)	1.371(13)
Cl(1B)-O(2B)	1.431(14)
Cl(1B)-O(1B)	1.48(2)
N(1)-C(7)	1.132(5)
N(2)-C(16)#1	1.144(5)
C(1)-C(6)	1.389(5)
C(1)-C(2)	1.396(5)
C(1)-C(7)	1.442(5)
C(2)-C(3)	1.384(5)
C(3)-C(4)	1.386(5)
C(4)-C(5)	1.399(5)
C(5)-C(6)	1.398(5)
C(5)-C(8)	1.430(5)
C(8)-C(9)	1.191(5)
C(9)-C(10)	1.432(5)
C(10)-C(11)	1.392(5)
C(10)-C(15)	1.406(5)
C(12)-C(13)	1.376(6)
C(12)-C(11)	1.388(6)
C(13)-C(14)	1.383(6)
C(14)-C(15)	1.390(5)
C(15)-C(16)	1.434(5)
C(16)-N(2)#1	1.144(5)
N(2)-Ag(1)-N(1)	138.42(14)
N(2)-Ag(1)-O(1B)	120.0(4)
N(1)-Ag(1)-O(1B)	101.4(4)
N(2)-Ag(1)-O(1A)	119.3(4)
N(1)-Ag(1)-O(1A)	102.3(4)
O(3A)-Cl(1A)-O(2A)	110.9(6)
O(3A)-Cl(1A)-O(4A)	111.1(7)
O(2A)-Cl(1A)-O(4A)	110.9(6)
O(3A)-Cl(1A)-O(1A)	107.6(9)
O(2A)-Cl(1A)-O(1A)	110.3(9)
O(4A)-Cl(1A)-O(1A)	105.9(9)
Cl(1A)-O(1A)-Ag(1)	125.8(10)
O(3B)-Cl(1B)-O(4B)	108.4(12)
O(3B)-Cl(1B)-O(2B)	106.0(13)
O(4B)-Cl(1B)-O(2B)	108.8(13)
O(3B)-Cl(1B)-O(1B)	116.8(14)
O(4B)-Cl(1B)-O(1B)	111.6(10)
O(2B)-Cl(1B)-O(1B)	104.9(10)
Cl(1B)-O(1B)-Ag(1)	126.8(8)
C(7)-N(1)-Ag(1)	156.4(3)
C(16)#1-N(2)-Ag(1)	176.1(3)
C(6)-C(1)-C(2)	121.3(3)

C(6)-C(1)-C(7)	118.0(3)
C(2)-C(1)-C(7)	120.7(3)
C(3)-C(2)-C(1)	118.8(4)
C(2)-C(3)-C(4)	120.8(4)
C(3)-C(4)-C(5)	120.4(3)
C(6)-C(5)-C(4)	119.2(3)
C(6)-C(5)-C(8)	118.6(3)
C(4)-C(5)-C(8)	122.2(3)
C(1)-C(6)-C(5)	119.5(3)
N(1)-C(7)-C(1)	178.1(4)
C(9)-C(8)-C(5)	175.8(4)
C(8)-C(9)-C(10)	175.6(4)
C(11)-C(10)-C(15)	118.5(3)
C(11)-C(10)-C(9)	121.7(3)
C(15)-C(10)-C(9)	119.7(3)
C(13)-C(12)-C(11)	121.1(4)
C(12)-C(11)-C(10)	119.9(4)
C(12)-C(13)-C(14)	120.0(4)
C(13)-C(14)-C(15)	119.5(4)
C(14)-C(15)-C(10)	120.9(3)
C(14)-C(15)-C(16)	120.0(4)
C(10)-C(15)-C(16)	119.1(3)
N(2)#1-C(16)-C(15)	178.2(4)

#1 -x, -y+1, -z+1

Figure 17
Supporting Information

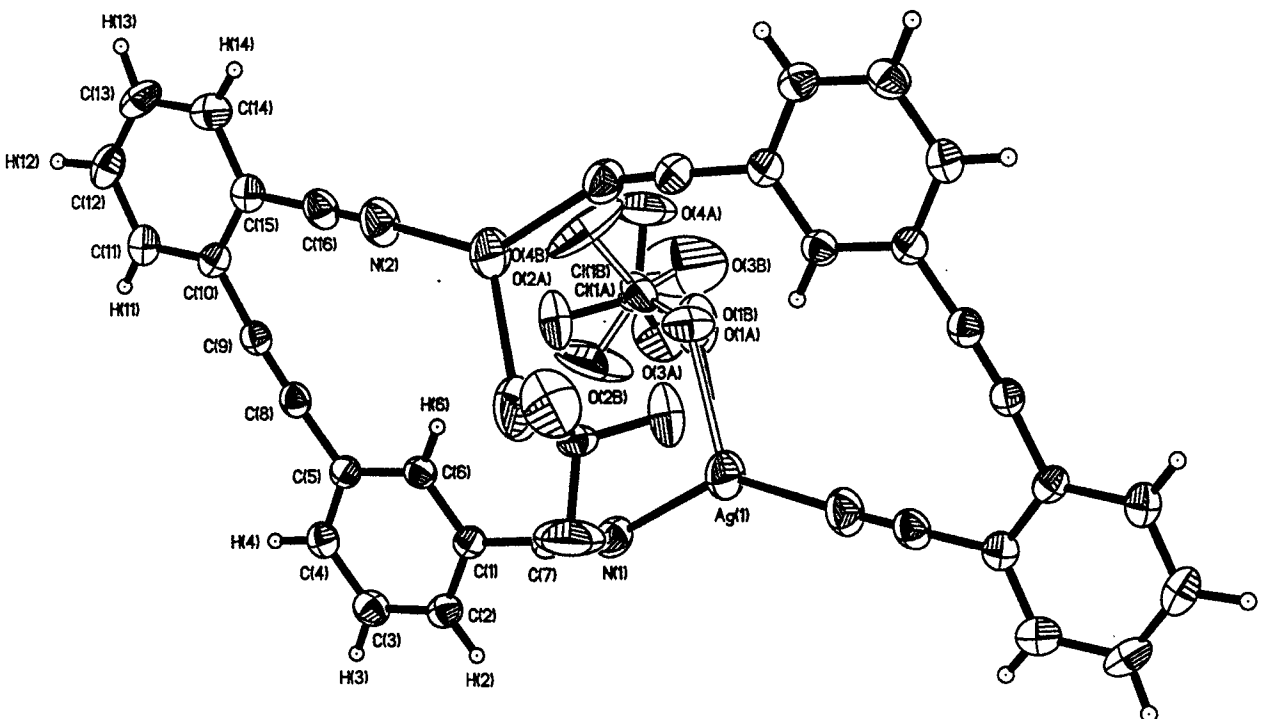


Table S11. Crystal data and structure refinement for 6 (w64ta).

Empirical formula	C16 H8 Ag F6 N2 Sb
Formula weight	571.86
Temperature	198(2) K
Wavelength	0.71073 Å
Crystal system	Triclinic
Space group	P-1
Unit cell dimensions	a = 8.6200(5) Å alpha = 62.106(2) deg b = 10.5473(5) Å beta = 88.499(3) deg c = 10.8146(4) Å gamma = 86.486(2) deg V = 867.36(7) Å ³ Z = 2
from 1405 reflns with 4<=theta<=28	
Density (calculated)	2.190 Mg/m ³
Absorption coefficient	2.748 mm ⁻¹
Crystal size	0.02 x 0.10 x 0.20 mm
Theta range for data collection	2.13 to 23.00 deg
Index ranges	-11<=h<=7, -13<=k<=14, -14<=l<=11
Collection method	\w scans
Reflections collected	3905 [R(int) = 0.0785]
Independent reflections	2391 [1716 obs, I >2sigma(I)]
Absorption correction	Integration
Max. and min. transmission	0.8968 and 0.7520
Refinement (shift/err=-0.002)	Full-matrix least-squares on F ²
Data / restraints / parameters	2337 / 0 / 235
Goodness-of-fit on F ²	1.160
Final R indices (obs data)	R1 = 0.0682, wR2 = 0.1196
R indices (all data)	R1 = 0.1116, wR2 = 0.1508
calc w=1/[\s^2^(Fo^2^)+(0.0000P)^2^+13.6704P] where P=(Fo^2^+2Fc^2^)/3	
Largest diff. peak and hole	0.828 and -0.951 e.Å ⁻³

Table S12. Atomic coordinates ($\times 10^4$) and equivalent isotropic displacement parameters ($\text{\AA}^2 \times 10^3$) for 6. $U(\text{eq})$ is defined as one third of the trace of the orthogonalized U_{ij} tensor

	x	y	z	U(eq)
Sb(1)	2237(1)	341(1)	1607(1)	32(1)
Ag(1)	2745(2)	-361(1)	-1898(1)	40(1)
F(1)	4230(10)	-526(10)	2141(10)	59(3)
F(3)	246(10)	1223(10)	1072(9)	50(2)
F(2)	1753(11)	-203(10)	3473(8)	54(3)
F(4)	2743(11)	913(10)	-266(9)	57(3)
F(5)	1523(13)	-1363(10)	1790(11)	72(3)
F(6)	2921(10)	2069(8)	1398(9)	47(2)
N(1)	3654(15)	-2283(15)	-210(13)	41(3)
N(2)	1861(16)	1244(16)	-3857(14)	52(4)
C(1)	4862(17)	-4472(14)	1963(12)	24(3)
C(2)	4498(15)	-5816(15)	2197(13)	26(3)
C(3)	5089(17)	-6980(17)	3406(15)	37(4)
C(4)	6033(16)	-6791(16)	4298(14)	29(4)
C(5)	6424(17)	-5398(15)	4022(13)	29(4)
C(6)	5772(16)	-4207(15)	2828(13)	27(3)
C(7)	4173(18)	-3243(17)	747(15)	34(4)
C(8)	7362(18)	-5172(16)	4974(14)	31(4)
C(9)	1818(17)	4978(16)	-5735(14)	29(4)
C(10)	885(16)	4604(16)	-6556(13)	27(3)
C(11)	197(16)	5651(16)	-7790(14)	30(4)
C(12)	-717(16)	5217(15)	-8577(14)	28(3)
C(13)	-980(18)	3801(16)	-8138(14)	36(4)
C(14)	-315(16)	2731(16)	-6897(14)	32(4)
C(15)	602(17)	3126(15)	-6116(14)	30(4)
C(16)	1315(20)	2084(18)	-4871(16)	43(4)

Table S13. Anisotropic displacement parameters ($\text{Å}^2 \times 10^3$) for 6. The anisotropic displacement factor exponent takes the form: $-2 \pi^2 [h^2 a^2 U_{11} + \dots + 2 h k a^* b^* U_{12}]$

	U11	U22	U33	U23	U13	U12
Sb(1)	33(1)	23(1)	34(1)	-9(1)	-2(1)	-2(1)
Ag(1)	42(1)	33(1)	31(1)	-4(1)	-10(1)	-1(1)
F(1)	34(6)	54(6)	66(6)	-10(5)	0(5)	6(5)
F(3)	31(5)	55(6)	49(5)	-13(5)	-5(4)	4(5)
F(2)	62(7)	56(6)	36(5)	-15(5)	-1(5)	12(5)
F(4)	74(7)	62(7)	36(5)	-25(5)	14(5)	-3(6)
F(5)	78(8)	39(6)	97(8)	-30(6)	16(6)	-26(6)
F(6)	49(6)	27(5)	62(6)	-17(4)	-2(5)	-16(4)
N(1)	32(8)	51(9)	35(8)	-16(7)	3(6)	-1(7)
N(2)	50(10)	58(10)	36(8)	-12(8)	-13(7)	-5(8)
C(1)	39(9)	21(8)	9(7)	-6(6)	4(6)	4(7)
C(2)	15(8)	34(9)	23(8)	-9(7)	-5(6)	1(7)
C(3)	29(9)	42(11)	45(10)	-25(9)	0(8)	-2(8)
C(4)	18(8)	37(10)	30(8)	-13(7)	-2(7)	-8(7)
C(5)	44(10)	26(9)	14(7)	-6(6)	11(7)	-9(7)
C(6)	27(9)	24(8)	26(8)	-9(7)	-4(7)	0(7)
C(7)	37(10)	43(11)	27(9)	-21(8)	-3(7)	-6(8)
C(8)	32(9)	37(9)	12(7)	-2(7)	11(7)	-1(7)
C(9)	22(9)	38(9)	21(8)	-10(7)	2(7)	-2(7)
C(10)	23(8)	49(10)	12(7)	-15(7)	4(6)	-8(7)
C(11)	26(9)	29(9)	32(8)	-11(7)	-3(7)	-11(7)
C(12)	21(8)	35(10)	25(8)	-13(7)	-6(6)	8(7)
C(13)	49(11)	36(10)	27(8)	-16(8)	-2(7)	-18(8)
C(14)	26(9)	28(9)	36(9)	-10(7)	0(7)	-9(7)
C(15)	26(9)	18(8)	32(8)	0(7)	4(7)	-2(7)
C(16)	51(11)	41(11)	31(9)	-13(9)	-2(8)	-2(9)

Table S14. Hydrogen coordinates ($\times 10^4$) and isotropic displacement parameters ($\text{Å}^2 \times 10^3$) for 6. Treatment of hydrogen atoms not specifically described in the refinement summary was "noref."

	x	y	z	U(eq)
H(2)	3870(15)	-5944(15)	1560(13)	31
H(3)	4833(17)	-7923(17)	3616(15)	44
H(4)	6429(16)	-7604(16)	5114(14)	35
H(6)	5958(16)	-3252(15)	2631(13)	32
H(11)	339(16)	6640(16)	-8098(14)	36
H(12)	-1162(16)	5928(15)	-9435(14)	34
H(13)	-1618(18)	3547(16)	-8682(14)	43
H(14)	-490(16)	1749(16)	-6593(14)	38

Table S15. Bond lengths [Å] and angles [deg] for 6.

Sb(1)-F(5)	1.857(9)
Sb(1)-F(6)	1.860(8)
Sb(1)-F(2)	1.865(8)
Sb(1)-F(1)	1.867(9)
Sb(1)-F(4)	1.870(8)
Sb(1)-F(3)	1.870(8)
Ag(1)-N(1)	2.115(14)
Ag(1)-N(2)	2.122(14)
N(1)-C(7)	1.13(2)
N(2)-C(16)	1.13(2)
C(1)-C(6)	1.37(2)
C(1)-C(2)	1.37(2)
C(1)-C(7)	1.45(2)
C(2)-C(3)	1.39(2)
C(3)-C(4)	1.37(2)
C(4)-C(5)	1.42(2)
C(5)-C(6)	1.41(2)
C(5)-C(8)	1.44(2)
C(8)-C(9)#1	1.19(2)
C(9)-C(8)#1	1.19(2)
C(9)-C(10)	1.41(2)
C(10)-C(11)	1.39(2)
C(10)-C(15)	1.44(2)
C(11)-C(12)	1.41(2)
C(12)-C(13)	1.37(2)
C(13)-C(14)	1.40(2)
C(14)-C(15)	1.38(2)
C(15)-C(16)	1.41(2)
F(5)-Sb(1)-F(6)	178.8(4)
F(5)-Sb(1)-F(2)	90.5(5)
F(6)-Sb(1)-F(2)	90.0(4)
F(5)-Sb(1)-F(1)	90.4(5)
F(6)-Sb(1)-F(1)	90.6(4)
F(2)-Sb(1)-F(1)	89.9(4)
F(5)-Sb(1)-F(4)	90.5(5)
F(6)-Sb(1)-F(4)	89.0(4)
F(2)-Sb(1)-F(4)	179.0(5)
F(1)-Sb(1)-F(4)	89.8(4)
F(5)-Sb(1)-F(3)	90.0(5)
F(6)-Sb(1)-F(3)	88.9(4)
F(2)-Sb(1)-F(3)	90.0(4)
F(1)-Sb(1)-F(3)	179.5(4)
F(4)-Sb(1)-F(3)	90.2(4)
N(1)-Ag(1)-N(2)	165.4(5)
C(7)-N(1)-Ag(1)	174.1(13)
C(16)-N(2)-Ag(1)	176.4(14)
C(6)-C(1)-C(2)	124.6(12)
C(6)-C(1)-C(7)	117.8(12)
C(2)-C(1)-C(7)	117.6(12)
C(1)-C(2)-C(3)	117.2(13)
C(4)-C(3)-C(2)	121(2)
C(3)-C(4)-C(5)	120.9(14)
C(6)-C(5)-C(4)	118.2(13)
C(6)-C(5)-C(8)	119.9(13)

C(4)-C(5)-C(8)	121.7(12)
C(1)-C(6)-C(5)	117.9(13)
N(1)-C(7)-C(1)	179(2)
C(9)#1-C(8)-C(5)	178(2)
C(8)#1-C(9)-C(10)	174(2)
C(11)-C(10)-C(9)	121.1(14)
C(11)-C(10)-C(15)	118.4(13)
C(9)-C(10)-C(15)	120.5(12)
C(10)-C(11)-C(12)	118.8(13)
C(13)-C(12)-C(11)	121.9(13)
C(12)-C(13)-C(14)	120.3(13)
C(15)-C(14)-C(13)	118.9(14)
C(14)-C(15)-C(16)	120.8(14)
C(14)-C(15)-C(10)	121.6(13)
C(16)-C(15)-C(10)	117.6(14)
N(2)-C(16)-C(15)	179(2)

#1 -x+1, -y, -z

Figure 18
Supporting Information

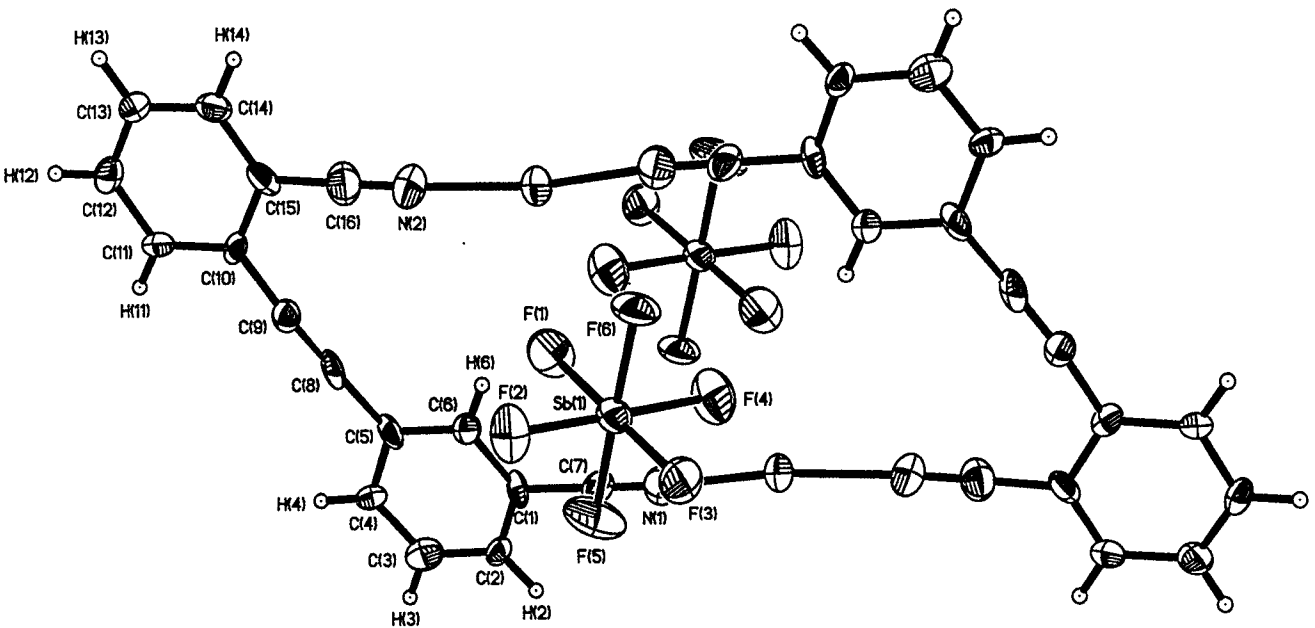


Table S16. Crystal data and structure refinement for 7 (w80se).

Empirical formula	C17 H8 Ag F3 N2 O3 S
Formula weight	485.18
Temperature	198(2) K
Wavelength	0.71073 Å
Crystal system	Orthorhombic
Space group	Pnma
Unit cell dimensions	a = 12.913(2) Å alpha = 90 deg
from 1559 reflns with	b = 19.849(2) Å beta = 90 deg
4<=theta<=28	c = 6.8919(8) Å gamma = 90 deg
	V = 1766.5(4) Å ³ Z = 4
Density (calculated)	1.824 Mg/m ³
Absorption coefficient	1.310 mm ⁻¹
Crystal size	0.01 x 0.09 x 0.42 mm
Theta range for data collection	2.05 to 25.11 deg
Index ranges	-15<=h<=9, -22<=k<=23, -8<=l<=7
Collection method	\w scans
Reflections collected	8827 [R(int) = 0.1252]
Independent reflections	1625 [987 obs, I >2sigma(I)]
Absorption correction	Semi-empirical from psi-scans
Max. and min. transmission	0.6614 and 0.5894
Refinement (shift/err=0.003)	Full-matrix least-squares on F ²
Data / restraints / parameters	1624 / 0 / 160
Goodness-of-fit on F ²	1.117
Final R indices (obs data)	R1 = 0.0506, wR2 = 0.0824
R indices (all data)	R1 = 0.1140, wR2 = 0.1044
calc w=1/[\s^2^(Fo^2^)+(0.0372P)^2^+0.0000P] where P=(Fo^2^+2Fc^2^)/3	
Largest diff. peak and hole	0.498 and -0.704 e.Å ⁻³

Table S17. Atomic coordinates ($\times 10^4$) and equivalent isotropic displacement parameters ($\text{Å}^2 \times 10^3$) for 7. $U(\text{eq})$ is defined as one third of the trace of the orthogonalized U_{ij} tensor

	x	y	z	$U(\text{eq})$
Ag(1)	6573(1)	2500	-614(1)	48(1)
N(1)	6753(4)	3552(3)	157(7)	48(2)
C(1)	7278(4)	4800(3)	209(8)	34(2)
C(2)	8320(5)	4984(3)	268(8)	45(2)
C(3)	8576(5)	5659(3)	305(9)	50(2)
C(4)	7823(5)	6141(3)	267(9)	50(2)
C(5)	6784(5)	5967(3)	211(8)	42(2)
C(6)	6503(4)	5293(3)	174(7)	31(1)
C(7)	6988(4)	4103(3)	186(8)	36(2)
C(8)	5430(4)	5091(3)	62(8)	36(2)
S(1)	4397(3)	2643(3)	-3723(5)	58(2)
O(1)	3443(6)	2451(17)	-2921(11)	68(4)
O(2)	5289(7)	2289(7)	-3015(16)	122(7)
O(3)	4474(8)	3356(5)	-3874(19)	103(4)
F(1)	3560(7)	2588(11)	-7167(11)	111(6)
F(2)	5201(7)	2596(27)	-7118(13)	148(11)
F(3)	4333(7)	1696(5)	-6324(16)	100(3)
C(9)	4376(11)	2351(7)	-6249(22)	54(6)

Table S18. Anisotropic displacement parameters ($\text{\AA}^2 \times 10^3$) for 7.
 The anisotropic displacement factor exponent takes the form:
 $-2 \pi^2 [h^2 a^{*2} U_{11} + \dots + 2 h k a^* b^* U_{12}]$

	U11	U22	U33	U23	U13	U12
Ag(1)	45(1)	34(1)	64(1)	0	2(1)	0
N(1)	45(4)	38(3)	61(4)	-2(3)	3(2)	11(3)
C(1)	37(4)	32(3)	34(4)	0(3)	1(3)	-1(3)
C(2)	31(4)	56(4)	47(4)	-1(3)	-2(3)	4(3)
C(3)	36(4)	62(5)	53(5)	2(3)	-1(3)	-16(3)
C(4)	61(5)	39(4)	50(5)	0(3)	-1(4)	-12(3)
C(5)	42(4)	43(4)	41(5)	-2(3)	0(3)	4(3)
C(6)	38(4)	26(3)	30(4)	-4(2)	1(3)	-3(3)
C(7)	28(4)	42(4)	38(5)	2(3)	2(2)	12(3)
C(8)	43(4)	22(3)	43(4)	-2(2)	6(4)	9(3)
S(1)	35(2)	51(7)	88(3)	-22(3)	-1(2)	1(2)
O(1)	52(5)	88(11)	64(5)	30(13)	-12(4)	-47(13)
O(2)	59(6)	140(20)	166(10)	-91(11)	-62(7)	45(8)
O(3)	103(9)	36(6)	171(13)	-45(7)	62(8)	-30(6)
F(1)	111(6)	158(14)	63(5)	53(10)	16(5)	96(12)
F(2)	123(7)	162(30)	160(9)	-44(19)	102(7)	-62(22)
F(3)	105(8)	65(7)	131(10)	-42(6)	-32(6)	27(5)
C(9)	45(9)	21(19)	95(12)	-18(7)	24(8)	-6(6)