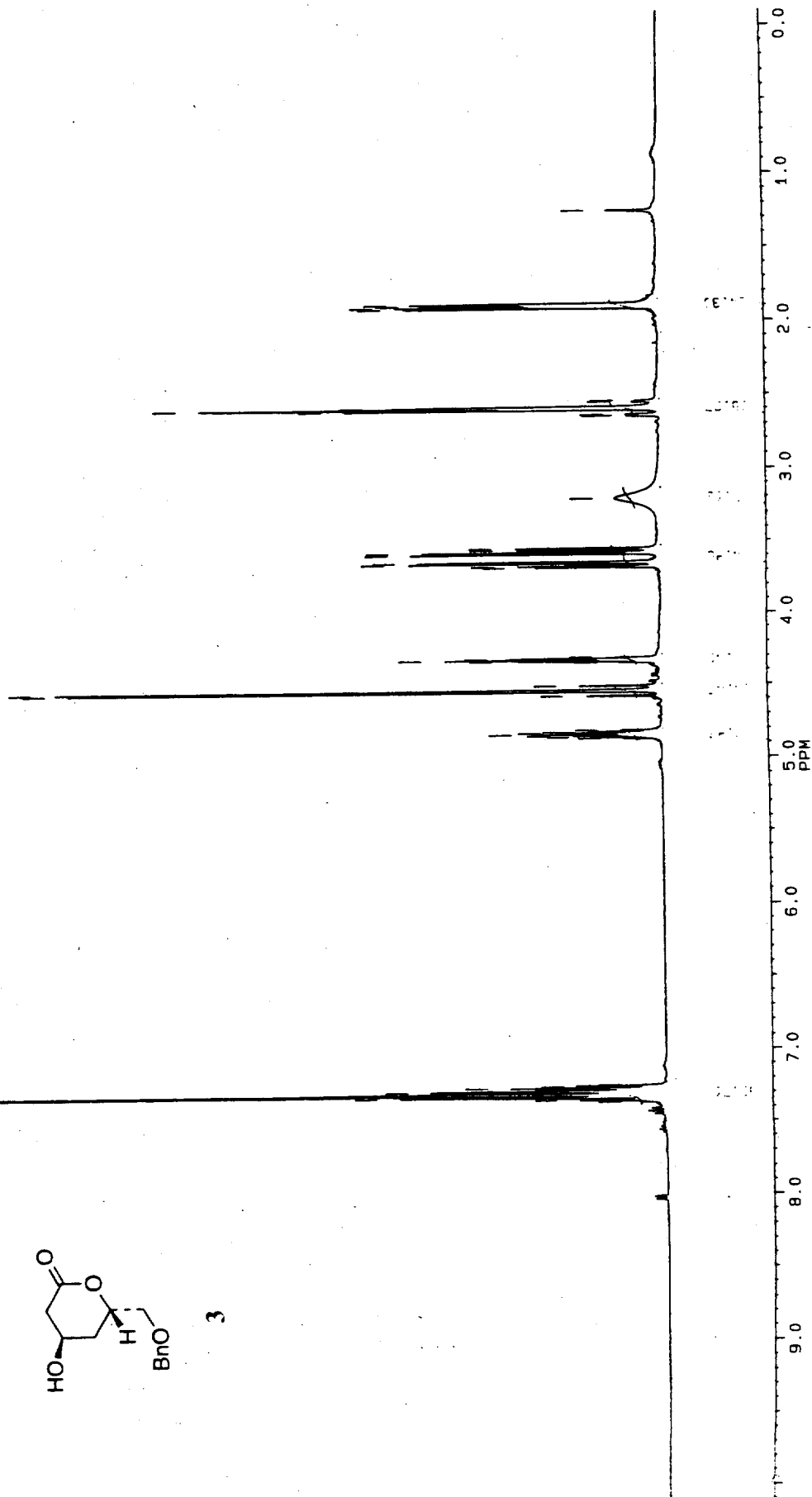
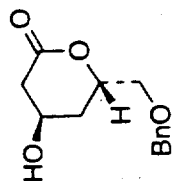




DATE 14-7-1
 SF 400
 SY 133.0
 O1 6600.1
 SI 16384
 TD 16384
 SM 4807
 HZ/PT
 PW 6
 RD 1
 AB 1
 RG 20
 NS 8
 TE 297
 FW 6100
 O2 6600
 DP 63L P0
 LB 0
 GB 34
 CX 20
 CY 10
 F1
 F2
 HZ/CM 120
 PPM/CM
 SR 4395

CDCL3 STANDARD PARAMETERS

7.35976
 7.34719
 7.32836
 7.31189
 7.30641
 7.28954
 7.28558
 7.27527
 7.26749
 7.25784
 7.25137
 7.24922
 7.24918
 4.86738
 4.85721
 4.84835
 4.83891
 4.82938
 4.82039
 4.81029
 4.79533
 4.77944
 4.76993
 4.75707
 4.74151
 4.72521
 4.70829
 4.69130
 4.67300
 4.65417
 4.63460
 4.61360
 4.59130
 4.56820
 4.54379
 4.51800
 4.49096
 4.46196
 4.43147
 4.39959
 4.36602
 2.64457
 2.64042
 2.63417
 2.60055
 2.59063
 2.58376
 2.54795
 2.53912
 1.90967
 1.90101
 1.89080
 1.88224
 1.24999



~~BOOK~~

LMS
 DATE 20-7-
 SF 50 3
 SY 50.33100
 O1 -1141 0
 SI 16384
 TD 16384
 SW 12195 2
 HZ/PT 1 9
 PM 4
 RD 2 0
 AQ 400
 RG 255
 NS 297
 TE
 FM 153000
 O2 3365.10
 DP 27H B
 LB 3710
 GB 0
 CX 34
 CY 20
 F1 200 17P
 F2 300 33P
 HZ/CM 29770
 PPM/CM 11
 SR -667

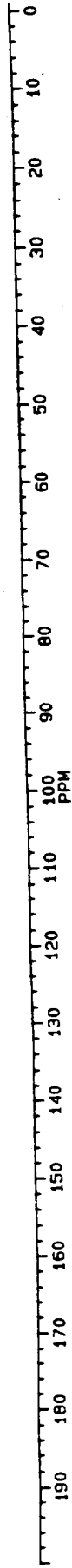
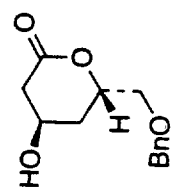
CDCL3 STANDARD PARAMETERS

31.775
 38.407
 52.097
 71.570
 73.409
 74.409
 76.407
 77.041
 77.673

126.357
 127.735
 127.838

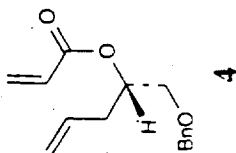
137.600

170.885



Proton standard parameters, BBI probe

- 7.34723
- 7.34440
- 7.33028
- 7.32638
- 7.26112
- 6.44293
- 6.40339
- 6.39921
- 6.17850
- 6.15243
- 6.10972
- 5.95115
- 5.84792
- 5.82495
- 5.82193
- 5.08099
- 4.57248
- 4.53077
- 3.58398
- 3.57156

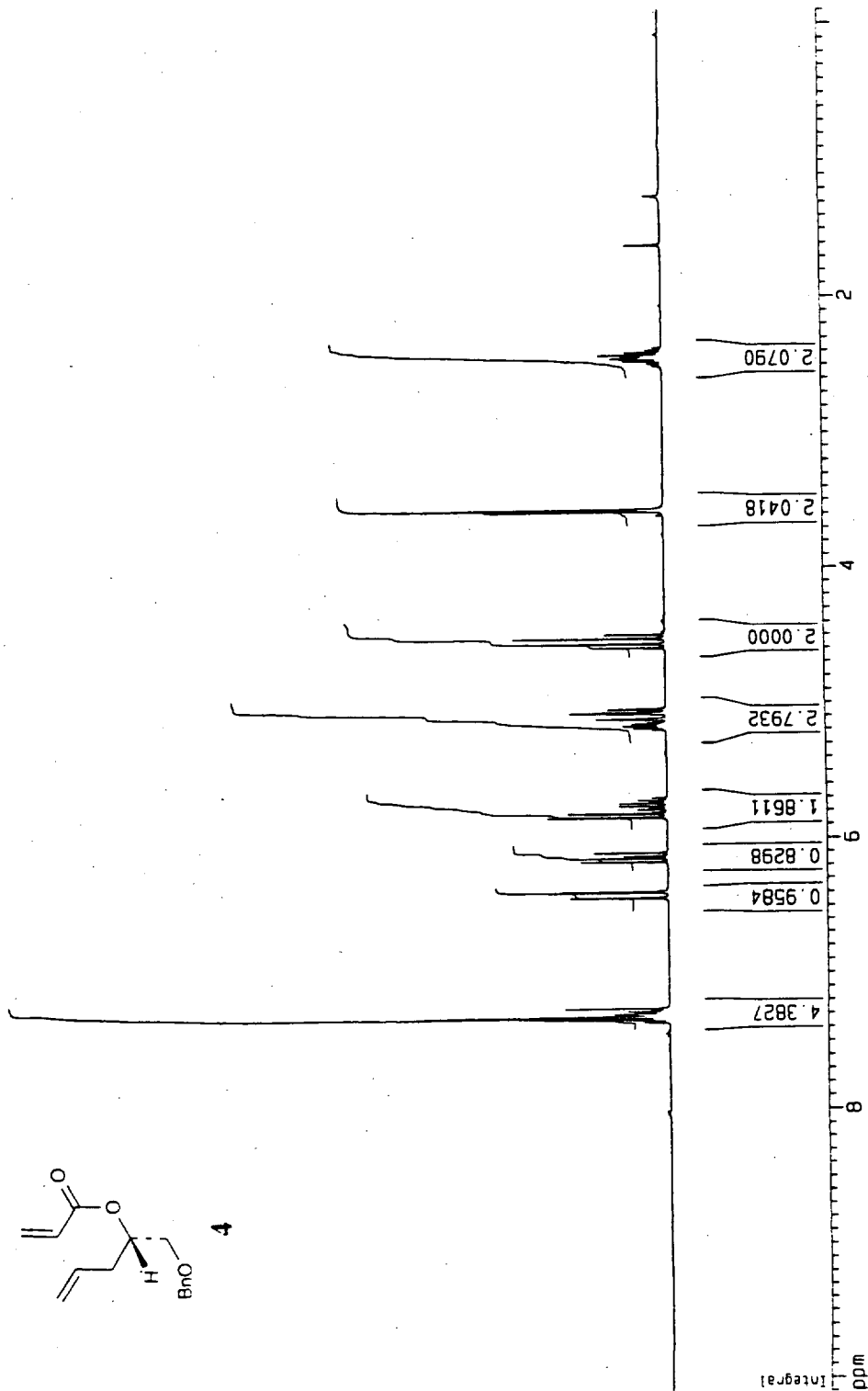


Current Data Parameters
 NAME expo
 EXPNO 1
 PROCNO 1

F2 - Acquisition Parameters
 Date_ 20000221
 Time 16.54
 INSTRUM spect
 PROBHD 5 mm BBI 1H-B
 PULPROG zg
 TD 16384
 SOLVENT CDCl3
 NS B
 DS 2
 SWH 4789.272 Hz
 FIDRES 0.292314 Hz
 AQ 1.7105396 sec
 RG 32
 DM 104.400 usec
 DE 6.00 usec
 TE 300.0 K
 D1 1.0000000 sec
 P1 4.00 usec
 SF01 400.1342000 MHz
 NUC1 1H
 PL1 0.00 dB

F2 - Processing parameters
 SI 8192
 SF 400.1320090 MHz
 WDWH EM
 SSB 0
 LB 0.10 Hz
 GB -0
 PC 1.00

1D NMR plot parameters
 CX 20.00 cm
 FIP 10.100 ppm
 F1 4041.33 Hz
 F2P -0.100 ppm
 F2 -40.01 Hz
 PPMCM 0.51000 ppm/cm



ppm

Integral

Cation 13 standard parameters, 101 probe

Current Data Parameters
 NAME expo
 EXPNO 2
 PROCNO 1

F2 - Acquisition Parameters
 Date_ 20000221
 Time 17 07
 INSTRUM spect
 PROBHD 5 mm BBI 1H-B
 PULPROG zgpg
 TD 32768
 SOLVENT CDCl3
 NS 702
 DS 2
 SWH 24154.590 Hz
 FIDRES 0.737140 Hz
 AQ 0.6783476 sec
 RG 6502
 DM 20.700 usec
 DE 29.57 usec
 TE 300.0 K
 d11 0.03000000 sec
 d12 0.00002000 sec
 PL13 21.00 dB
 D1 2.00000000 sec
 CPDPRG2 waltz16
 PCPD2 80.00 usec
 SF02 400.134220 MHz
 NUC2 1H
 PL2 0.00 dB
 PL12 21.00 dB
 P1 4.50 usec
 SF01 100.624360 MHz
 NUC1 13C
 PL1 0.00 dB

F2 - Processing parameters
 SI 32768
 SF 100.6132740 MHz
 MDW EM
 SSB 0
 LB 3.00 Hz
 GB 0
 PC 1.40

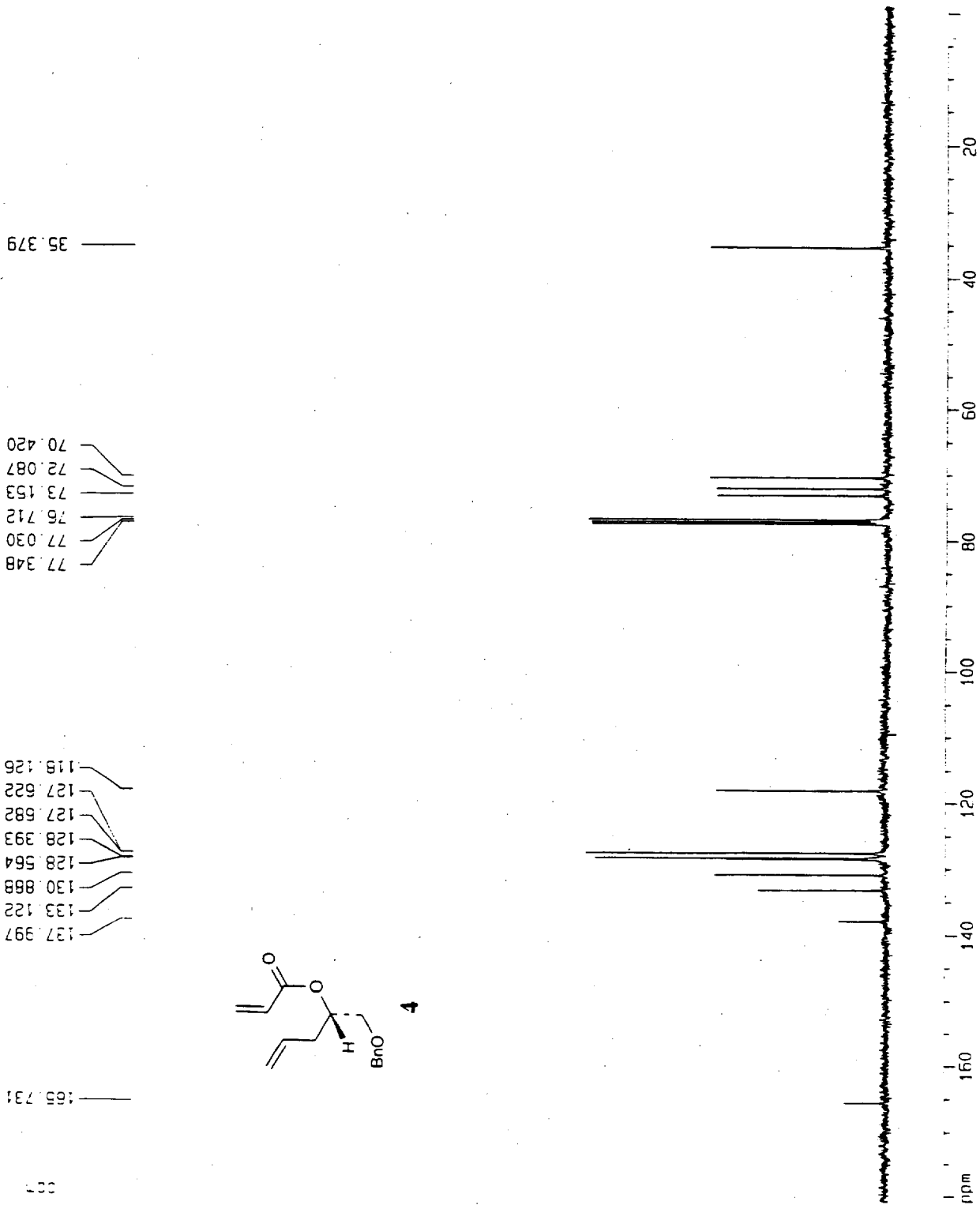
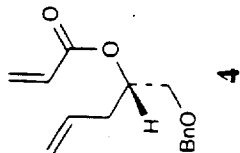
10 NMR plot parameters
 CX 20.00 cm
 FJP 181.000 ppm
 F1 18211.00 Hz
 F2P -1.000 ppm
 F2 -100.61 Hz
 PPMCM 9.10000 ppm/cm
 HZCM 915.58081 Hz/cm

35.379

70.420
 72.087
 73.153
 76.712
 77.030
 77.348

118.126
 127.622
 127.682
 128.393
 128.564
 130.888
 133.122
 137.997

163.731

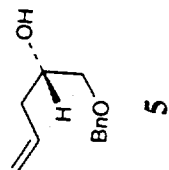




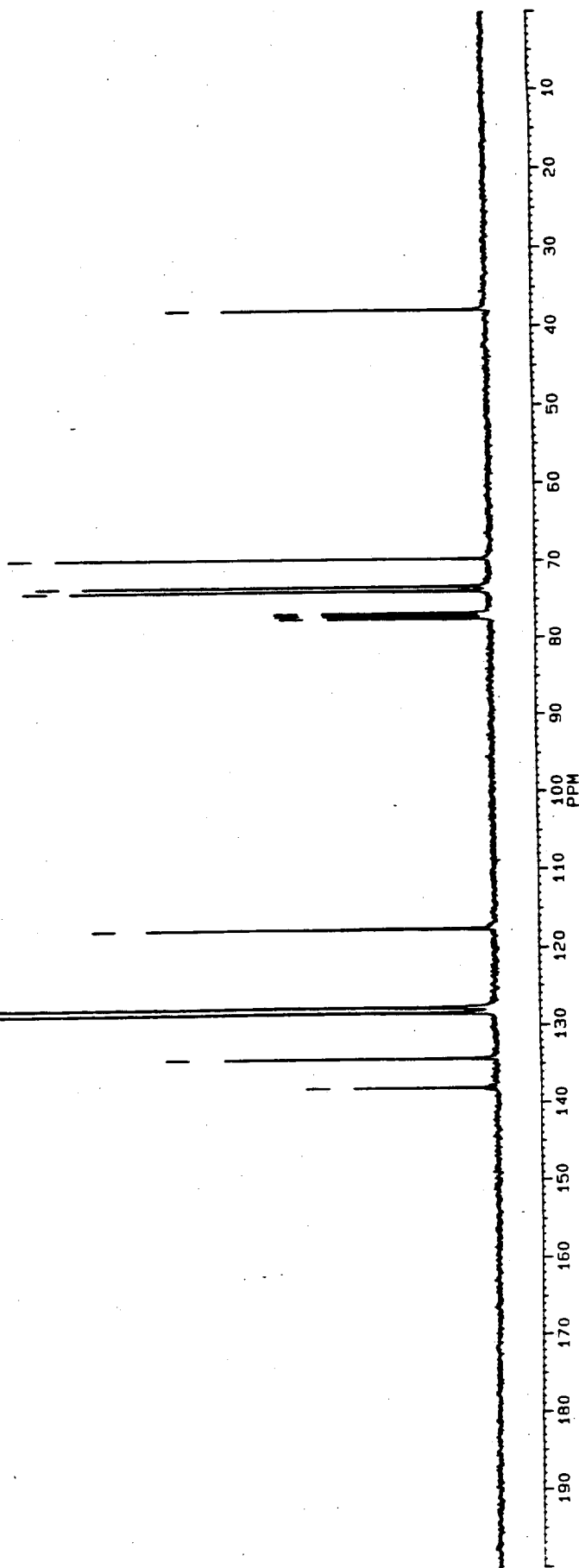
KRIPA27.C
 DATE 1-7-00
 SF 101.14
 SY 74.0
 O1 4971.00
 S1 32761
 TD 32761
 SW 23801.24
 HZ/PT 53
 PW 00
 RD 00
 AQ 088
 RG 801
 NS 21
 TE 301
 FM 29801
 O2 5501.00
 DP 2L1
 LB 00
 GB 0
 CX 3
 CY 2
 F1 19.99
 F2 01
 HZ/CM 59.44
 PPM/CM 162
 SR -611

CDCL3 C13 STANDARD PARAMETERS

137.907
134.216
128.384
127.690
117.564
77.362
77.034
76.727
73.849
73.285
59.546
37.851



ppm



Proton standard parameters, 8BI probe

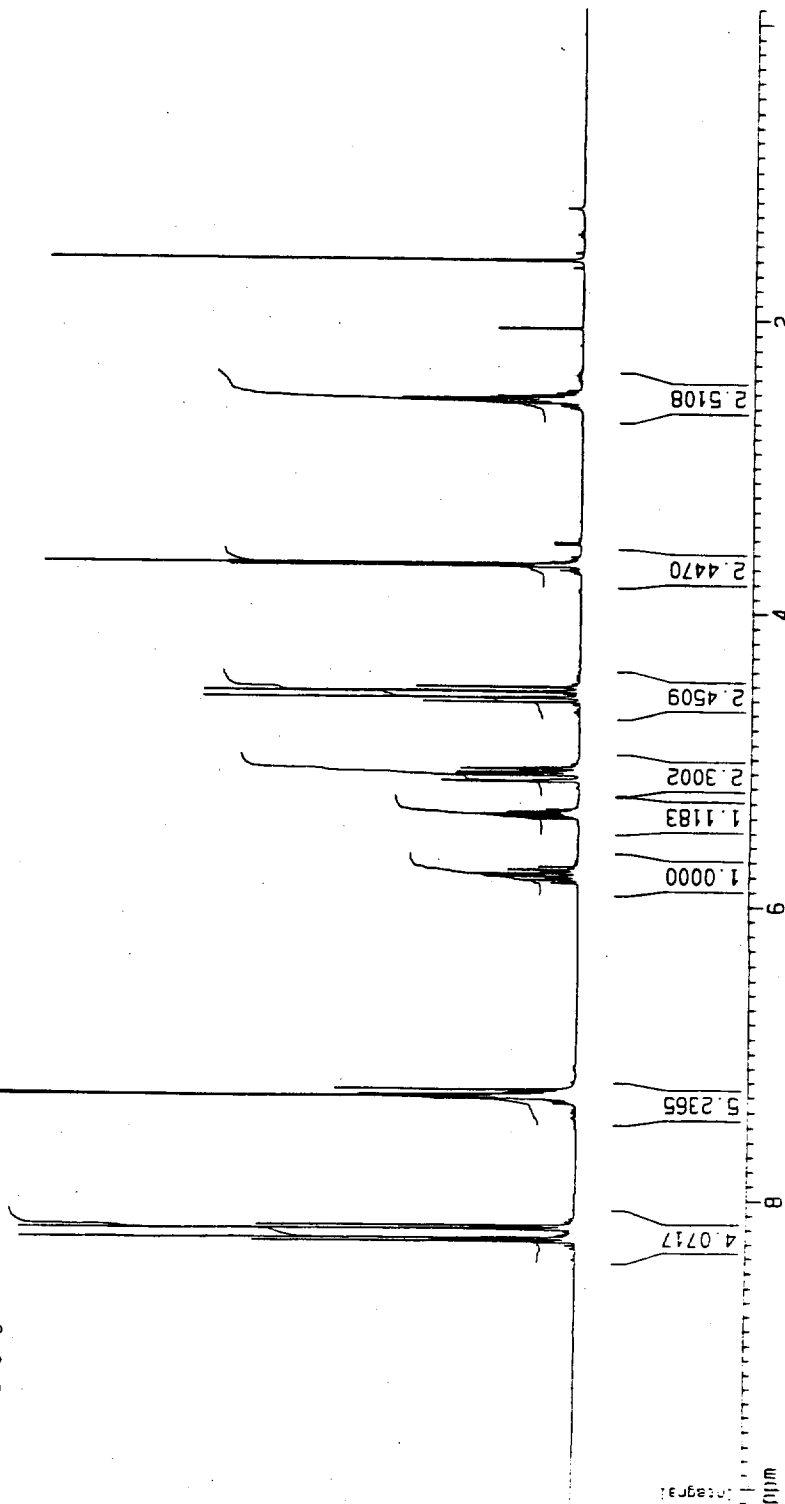
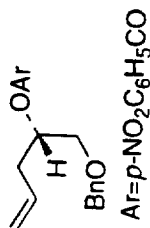
Current Data Parameters
 NAME DEFAULT
 EXPNO 1
 PROCNO 1

F2 - Acquisition Parameters
 Date_ 990810
 Time 14.48
 INSTRUM spect
 PROBHD 5 mm 8BI 1H-B
 PULPROG zg
 TD 16384
 SOLVENT CDC13
 NS 8
 DS 2
 SMH 4789.272 Hz
 FIDRES 0.292314 Hz
 AQ 1.7105396 sec
 RG 57
 DK 104.400 usec
 DE 6.00 usec
 TE 300.0 K
 D1 1.00000000 sec
 P1 4.00 usec
 SF01 400.1342000 MHz
 NUC1 1H
 PL1 0.00 dB

F2 - Processing parameters
 SI 16384
 SF 400.1320090 MHz
 MDW EM
 SSB 0
 LB 0.10 Hz
 GB 0
 PC 1.00

ID NMR plot parameters
 CX 20.00 cm
 F1P 10.100 ppm
 F1 4041.33 Hz
 F2P -0.100 ppm
 F2 -40.01 Hz
 PPMCM 0.51000 ppm/cm
 HZCM 204.06735 Hz/cm

ppm
 8.29695
 8.29199
 8.27979
 8.27456
 8.26954
 8.20953
 8.20432
 8.19214
 8.18718
 7.32197
 7.31927
 7.31472
 7.30809
 7.29792
 7.29370
 7.26079
 5.80637
 5.78872
 5.38025
 5.16348
 5.15944
 5.12075
 5.11677
 5.10259
 5.10062
 5.09856
 5.07727
 5.07529
 5.07318
 4.61842
 4.58801
 4.54612
 4.51571
 3.68804
 3.68502
 3.67403
 2.56977
 2.55842
 2.55541
 2.55271
 2.54110
 2.53826
 2.52347
 2.06474
 1.60623



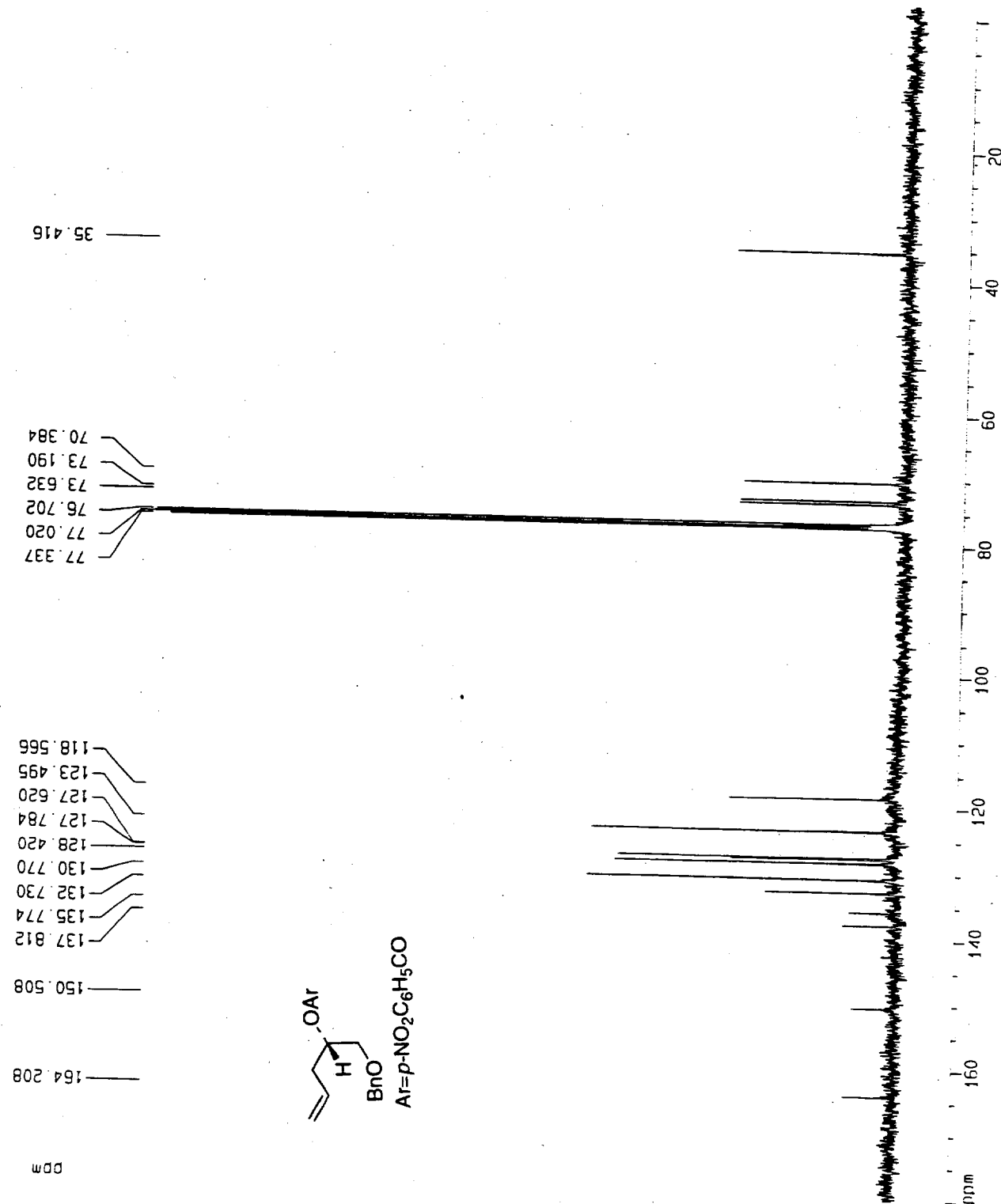
Carbon-13 standard parameters, BBI probe

Current Data Parameters
 NAME DEFAULT
 EXPNO 2
 PROCNO 1

F2 - Acquisition Parameters
 Date_ 990810
 Time 15.17
 INSTAUM spect
 PROBHD 5 mm BBI 1H-B
 PULPROG zgpg
 TO 32768
 SOLVENT CDCl3
 NS 528
 DS 2
 SWH 24154.590 Hz
 FIDRES 0.737140 Hz
 AQ 0.6783476 sec
 RG 4096
 DM 20.700 usec
 DE 29.57 usec
 TE 300.0 K
 d11 0.0300000 sec
 d12 0.00002000 sec
 PL13 21.00 dB
 D1 2.00000000 sec
 CPOPRG2 waltz16
 PCPD2 80.00 usec
 SF02 400.1342220 MHz
 NUC2 1H
 PL2 0.00 dB
 PL12 21.00 dB
 P1 4.50 usec
 SF01 100.6242960 MHz
 NUC1 13C
 PL1 0.00 dB

F2 - Processing parameters
 SI 32768
 SF 100.6132740 MHz
 MDW EM
 SSB 0
 LB 3.00 Hz
 GB 0
 PC 1.40

1D NMR plot parameters
 CX 20.00 cm
 F1P 180.000 ppm
 F1 18110.39 Hz
 F2P -2.000 ppm
 F2 -201.23 Hz
 PPMCM 9 10000 ppm/cm
 HZCM 915.58081 Hz/cm



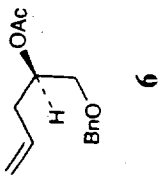
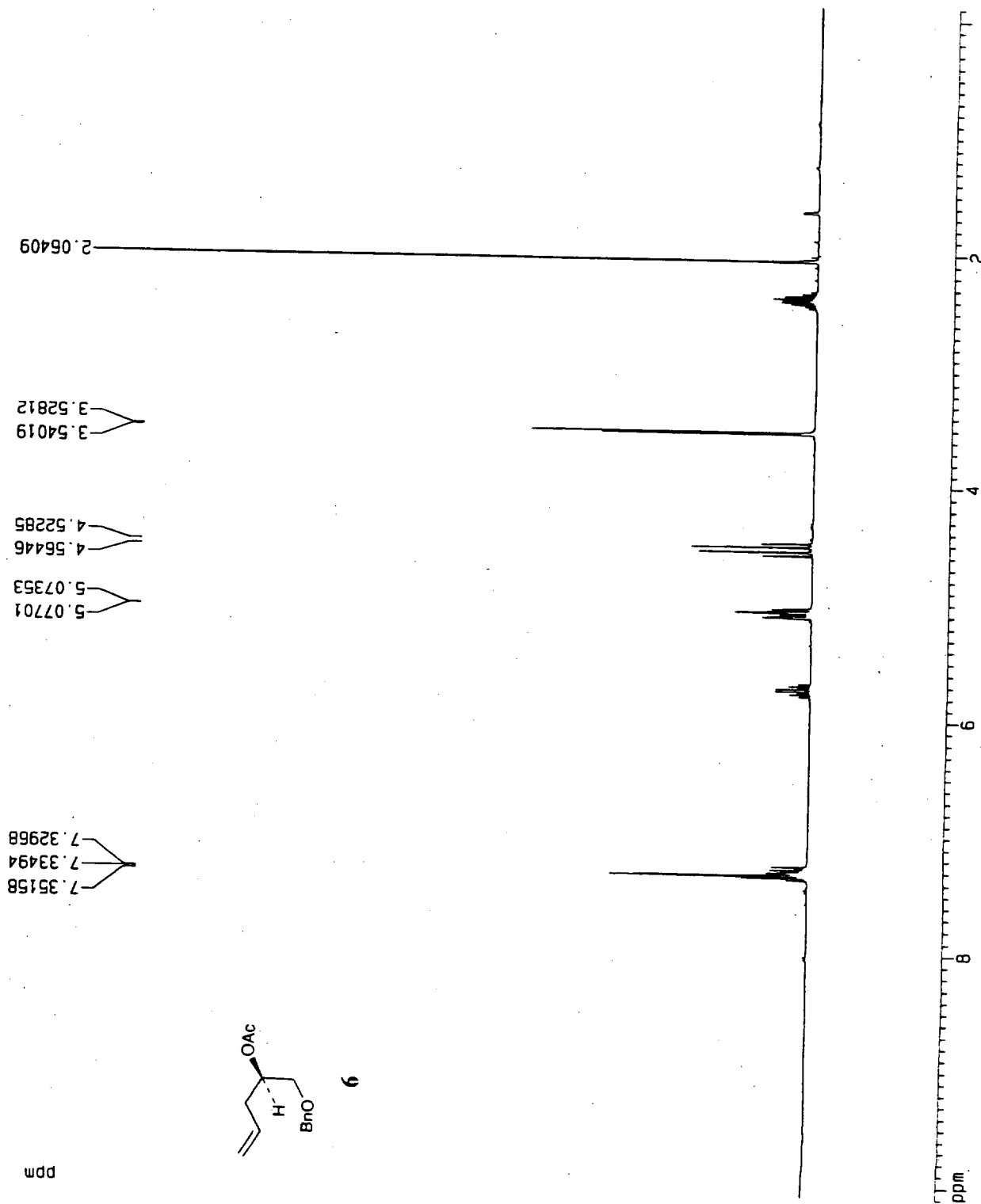
Proton standard parameters, BBI probe

Current Data Parameters
 NAME acetate
 EXPNO 1
 PROCNO 1

F2 - Acquisition Parameters
 Date_ 20000308
 Time 16.56
 INSTRUM spect
 PROBHD 5 mm BBI 1H-8
 PULPROG zg
 TO 16384
 SOLVENT CDCl3
 NS 8
 DS 2
 SMH 4789.272 Hz
 FIDRES 0.292314 Hz
 AQ 1.7105396 sec
 RG 32
 DM 104.400 usec
 DE 6.00 usec
 TE 300.0 K
 D1 1.0000000 sec
 P1 4.00 usec
 SF01 400.1342000 MHz
 NUC1 1H
 PL1 0.00 dB

F2 - Processing parameters
 SI 8192
 SF 400.1320090 MHz
 MDW EM
 SSB 0
 LB 0.10 Hz
 GB 0
 PC 1.00

1D NMR plot parameters
 CX 20.00 cm
 F1P 10.100 ppm
 F1 4041.33 Hz
 F2P -0.100 ppm
 F2 -40.01 Hz
 PPMCM 0.51000 ppm/cm
 HZCM 204.06735 Hz/cm



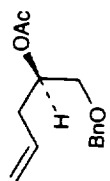
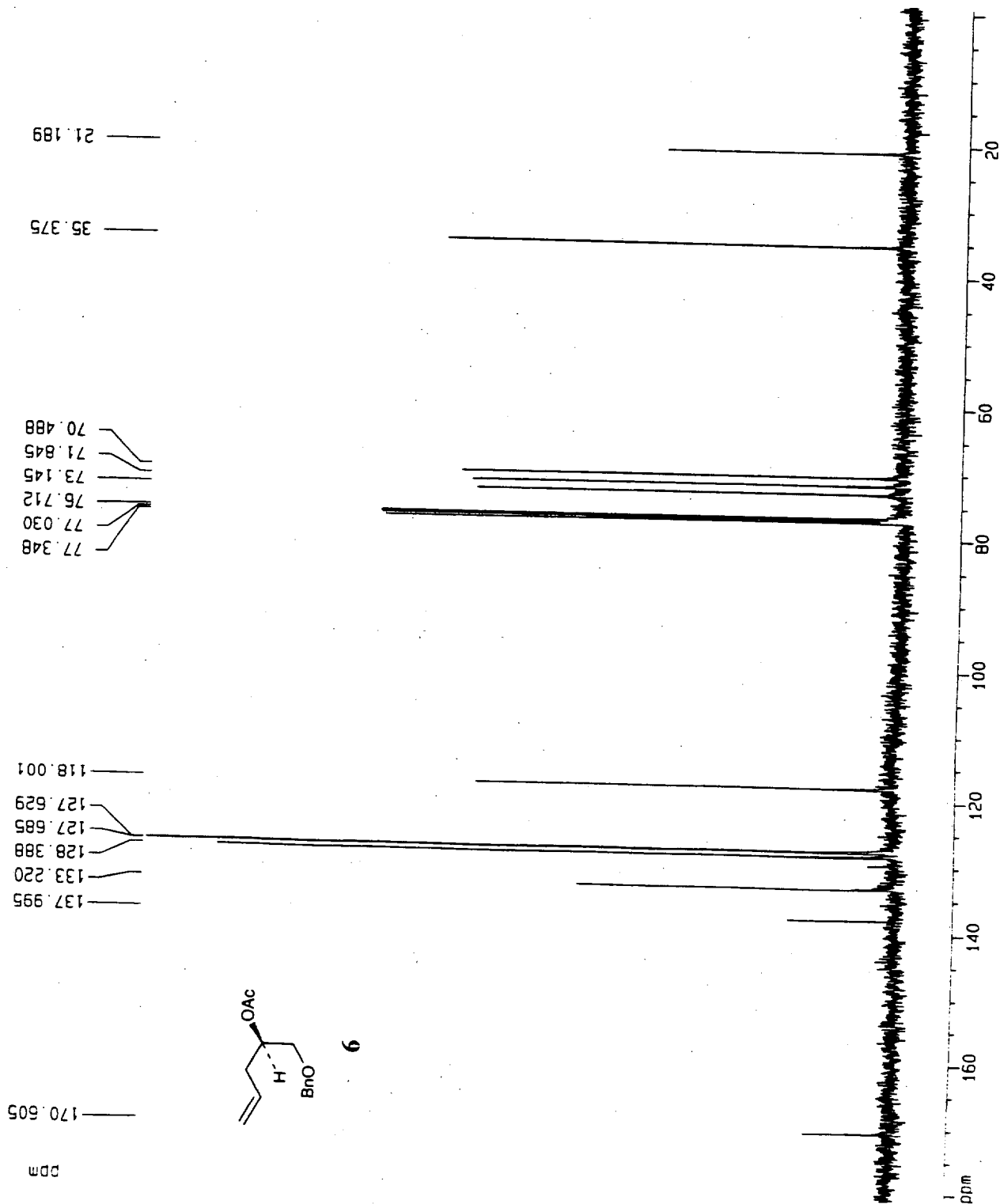
Carbon-13 standard parameters, BBI probe

Current Data Parameters
 NAME acetate
 EXPNO 2
 PROCNO 1

F2 - Acquisition Parameters
 Date_ 20000308
 Time 17.03
 INSTRUM spect
 PROBHD 5 mm BBI 1H-8
 PULPROG zgpg
 TD 32768
 SOLVENT COC13
 NS 500
 DS 2
 SMH 24154.590 Hz
 FIDRES 0.737140 Hz
 AQ 0.6783476 sec
 RG 5792.6
 DM 20.700 usec
 DE 29.57 usec
 TE 300.0 K
 d11 0.03000000 sec
 d12 0.00020000 sec
 PL13 21.00 dB
 D1 2.00000000 sec
 CPOPRG2 waltz16
 PCPD2 80.00 usec
 SF02 400.1342220 MHz
 NUC2 1H
 PL2 0.00 dB
 PL12 21.00 dB
 P1 4.50 usec
 SF01 100.6242960 MHz
 NUC1 13C
 PL1 0.00 dB

F2 - Processing parameters
 SI 32768
 SF 100.6132740 MHz
 WDW EM
 SSB 0
 LB 3.00 Hz
 GB 0
 PC 1.40

1D NMR plot parameters
 CX 20.00 cm
 FIP 181.000 ppm
 F1 18211.00 Hz
 F2 -1.000 ppm
 F2 -100.61 Hz
 PPMCH 9.10000 ppm/cm
 HZCM 915.58061 Hz/cm

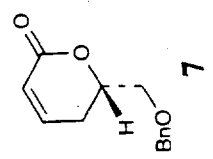
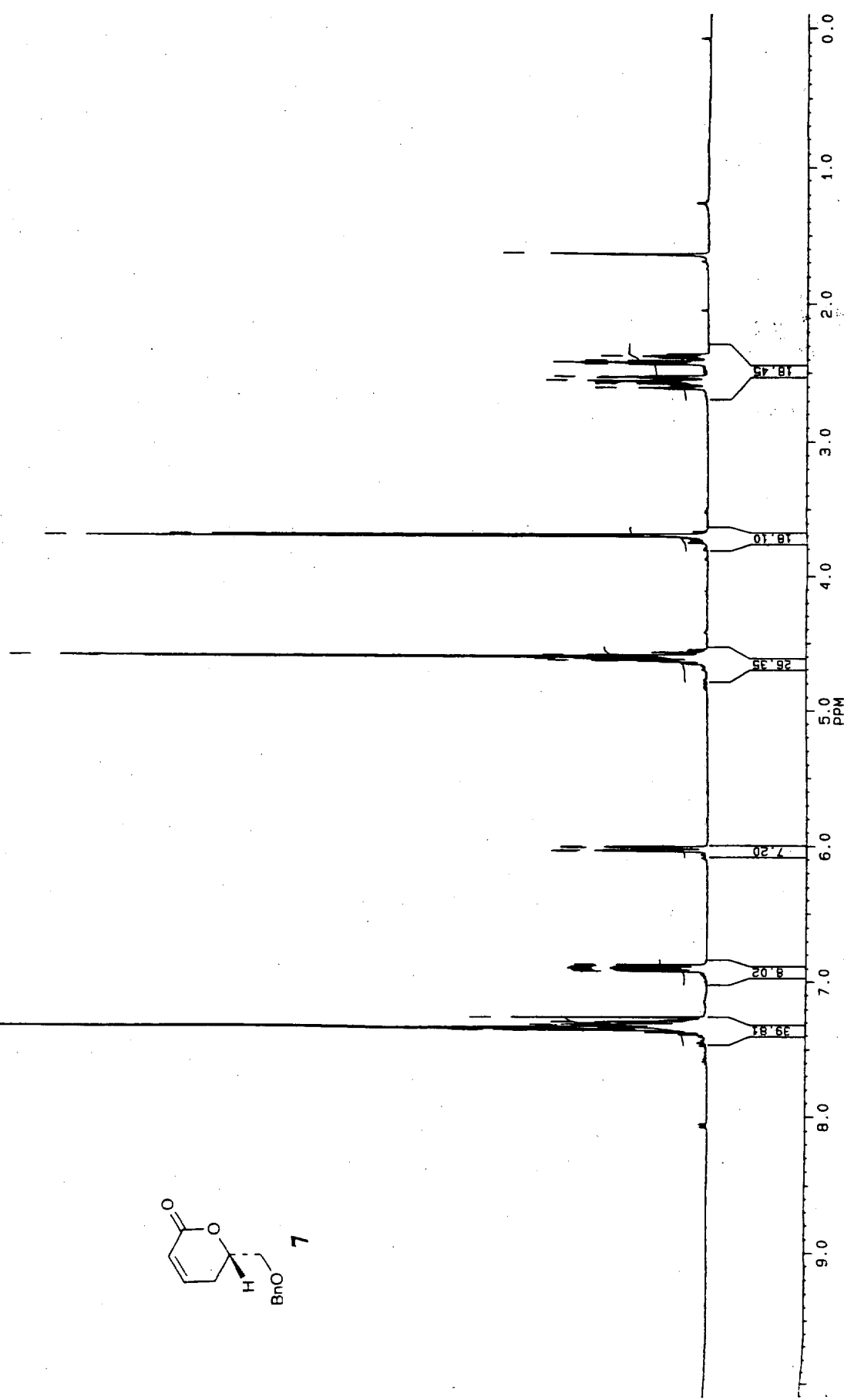


BOOK 1

CAI100
 DATE 28-1-99
 SF 401.34
 O1 660.00
 SI 16387
 TD 16387
 SW 480.92
 HZ/PT 97
 PW 1.00
 RD 1.00
 AG 1.00
 RG 101.00
 NS 291.00
 TE 1.00
 FW 610.00
 O2 660.00
 DP 63L1
 LB 1.00
 GB 3.00
 CX 2.00
 F1 1.00
 F2 1.00
 HZ/CM 120.34
 PPM/CM 30.00
 SR 439E

CDCL3 STANDARD PARAMETERS

1.63344
2.37184
2.40448
2.40674
2.41497
2.41803
2.42134
2.42966
2.43159
2.52641
2.53307
2.55228
2.56197
2.57278
2.60176
3.20076
3.68881
4.63189
4.62583
4.61439
4.60803
4.60195
4.59576
4.58957
6.00380
6.00599
6.01099
6.02927
6.03459
6.03658
6.87179
6.87814
6.8856
6.8937
6.89612
6.90244
6.91116
6.91730
7.30789
7.30963
7.3107
7.31083
7.31488
7.32043
7.3279
7.32701
7.35171
7.35438
7.35850

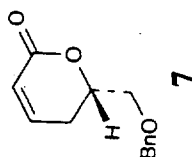
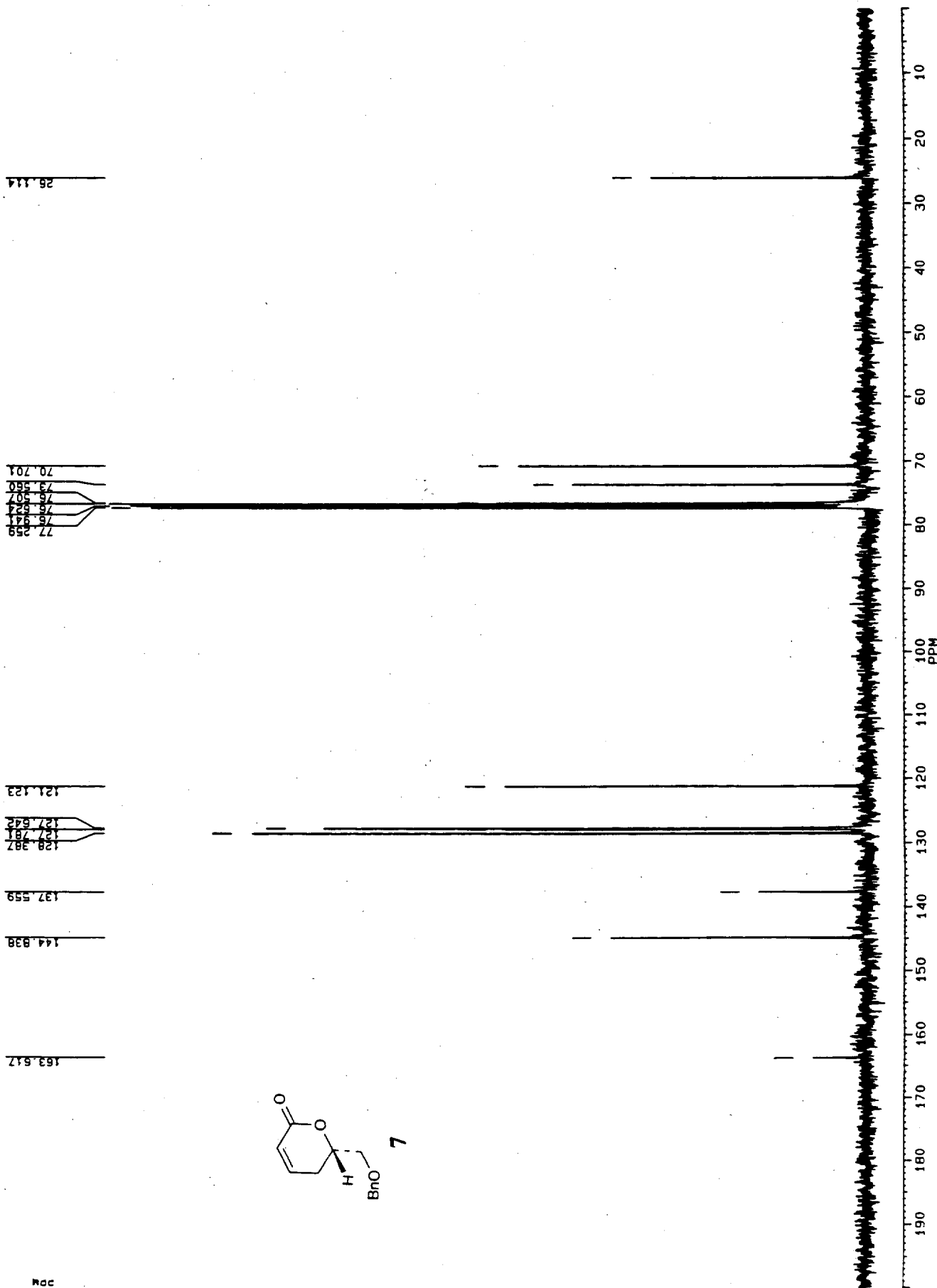


100



CAI100
 DATE 28-09-99
 SF 74.1 514
 O1 497.000
 SI 3276
 TD 3276 524
 SW 2386 453
 HZ/PT
 PM RD 100
 AG 588
 RG 2
 NS 30
 TE
 FM 2986
 O2 666
 DP 2L
 LB 100
 GB 10
 CX 10
 CY 10
 F1 15.399
 F2 101
 HZ/CM 55.344
 PPM/CM 182
 SR -611

COCL3 C13 STANDARD PARAMETERS



~~BIOM~~

DATE 16-7-
 SF 400.
 SY 133.0
 SI 6600
 SI 16384
 TD 16384
 SW 4807
 HZ/PT
 PW 6.
 RD 1.
 AG 1.
 RG 32
 NS 8
 TE 297
 FW 6100
 O2 6600.
 DP 63L P03
 LB 0.
 GB 34.
 CX 20.
 CY 10.
 F1
 F2
 HZ/CM 120.
 PPM/CM
 SR 4395.

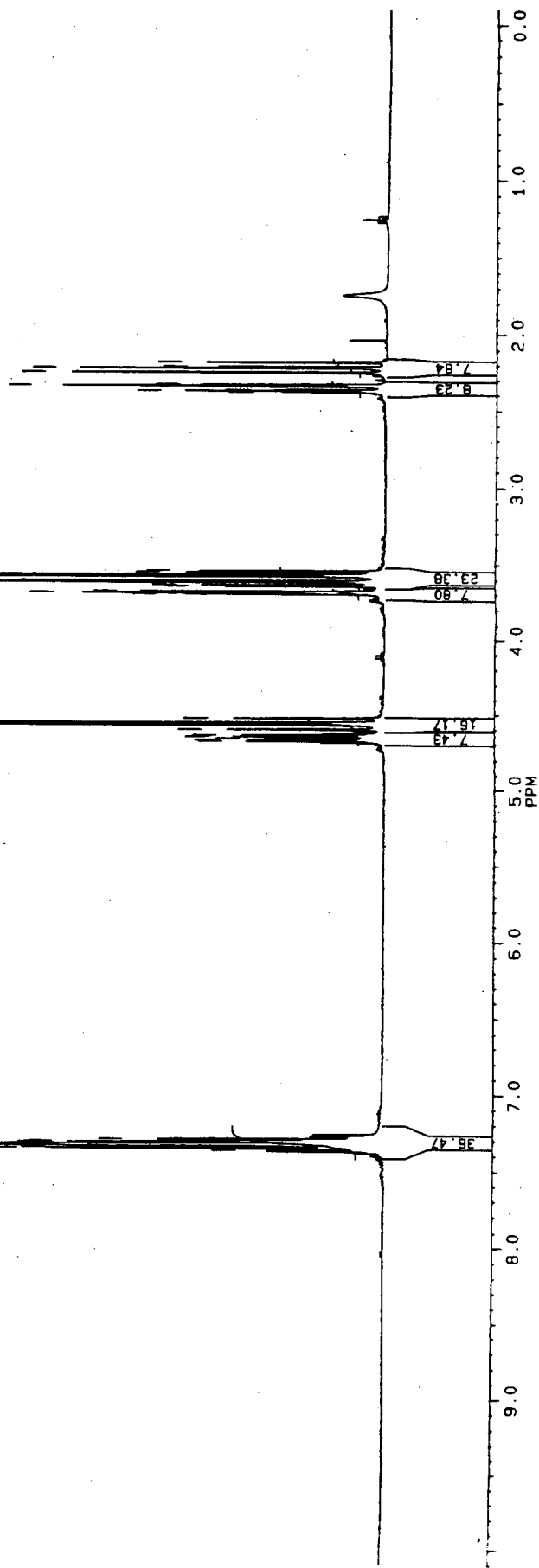
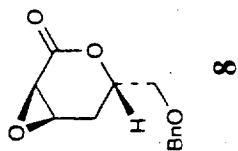
CDCl3 STANDARD PARAMETERS

2.17704
 2.20678
 2.21491
 2.24458
 2.25374
 2.3125
 2.33920
 2.36137
 2.36912
 2.37695

3.53612
 3.54701
 3.56308
 3.57355
 3.58444
 3.59491
 3.60538
 3.61585
 3.62632
 3.63679
 3.64726
 3.65773
 3.66820
 3.67867
 3.68914
 3.69961
 3.71008

4.57188
 4.58235
 4.59282
 4.60329
 4.61376
 4.62423
 4.63470
 4.64517
 4.65564
 4.66611
 4.67658
 4.68705
 4.69752
 4.70799
 4.71846
 4.72893
 4.73940

7.36382
 7.37429
 7.38476
 7.39523
 7.40570
 7.41617
 7.42664
 7.43711
 7.44758
 7.45805
 7.46852
 7.47899
 7.48946
 7.50000





DCPOL3.C1
 DATE 21-1-03
 SF 10(214
 SY 74.0
 O1 497(00
 SI 3276(00
 TD 3276(00
 SM 2380(00
 HZ/PT 33
 PW 100
 PD 100
 AD 38
 RG 6000
 NS 21
 TE 30
 FW 2980(00
 O2 660(00
 DP 2L
 LB 100.00
 GB 100.00
 CX 3.00
 CY 21.00
 F1 191.39f
 F2 191.31f
 HZ/CM 59.14
 PPM/CM 1.012
 SR -611f

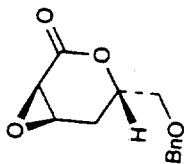
CDCL3 C13 STANDARD PARAMETERS

77.516
 77.159
 76.680
 73.404
 72.969
 70.595

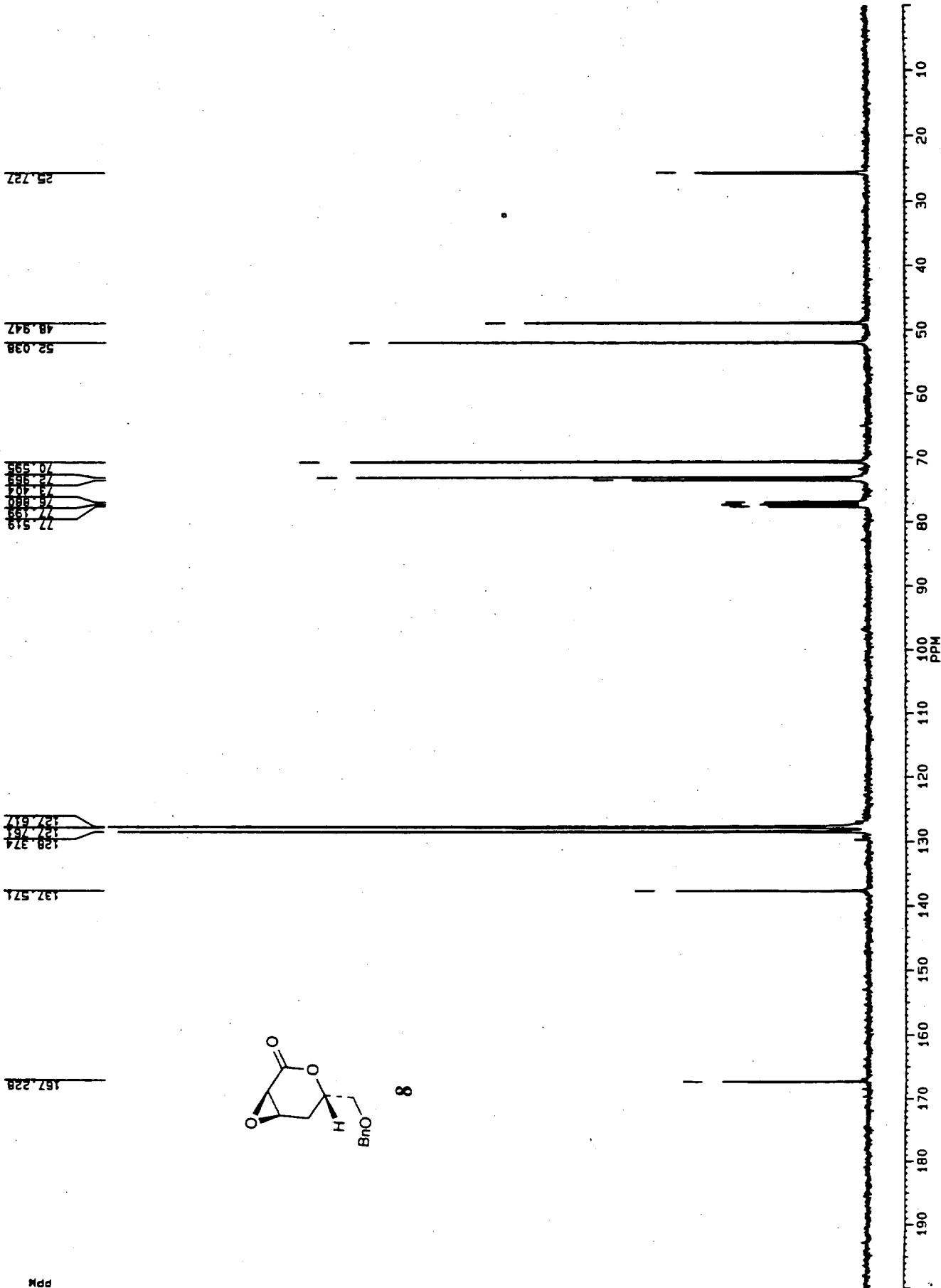
128.374
 127.761
 127.617

137.571

167.228



8



ppm

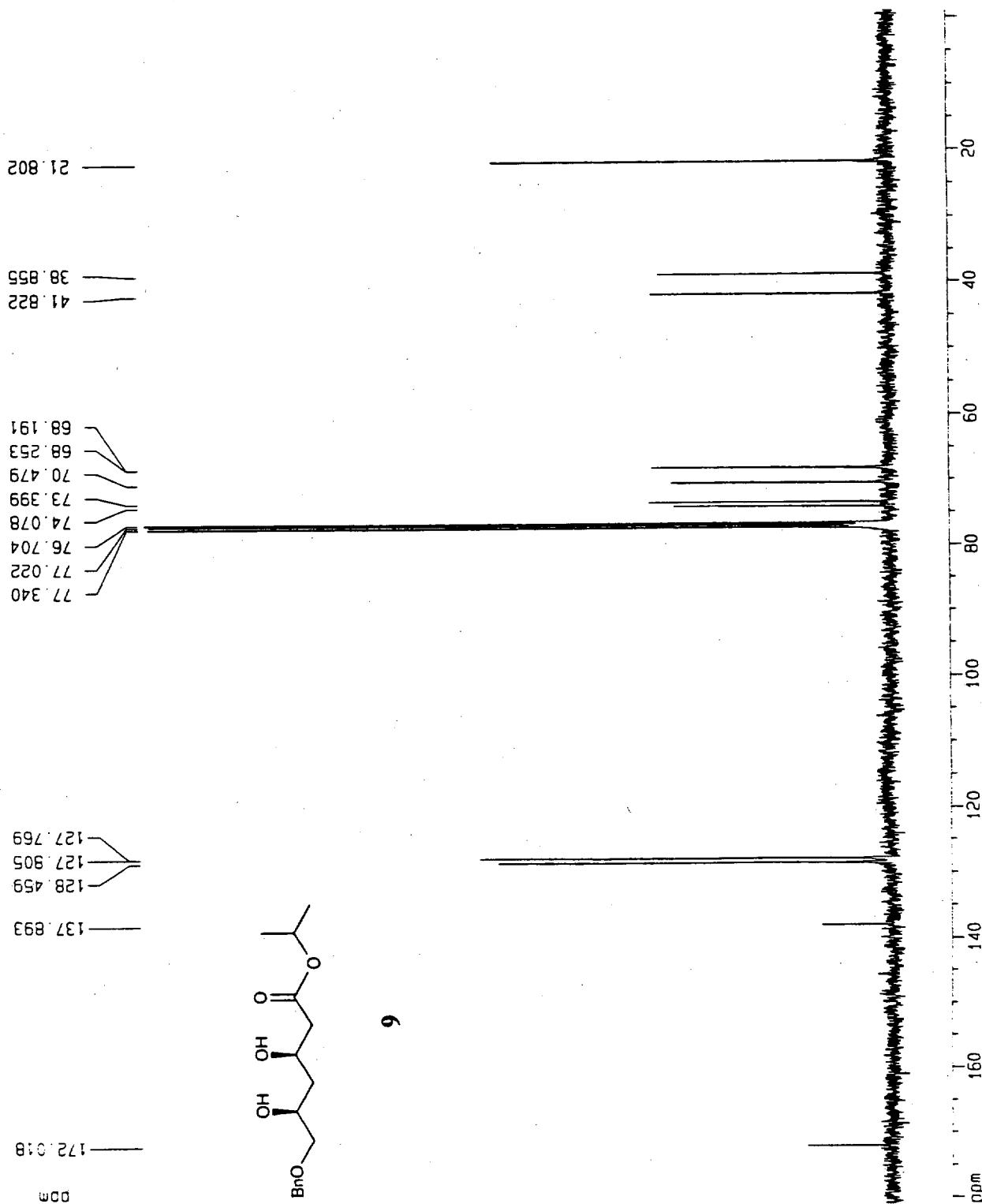
Carbon-13 standard parameters. BBI probe

Current Data Parameters
 NAME expn
 EXPNO 2
 PROCNO 1

F2 - Acquisition Parameters
 Date_ 20000118
 Time 11.49
 INSTRUM spect
 PROBHD 5 mm BBI 1H-B
 PULPROG zgpg
 TD 32768
 SOLVENT CDC13
 NS 1073
 DS 2
 SWH 24154.590 Hz
 FIDRES 0.737140 Hz
 AQ 0.6783476 sec
 RG 4096
 DM 20.700 usec
 DE 29.57 usec
 TE 300.0 K
 d11 0.03000000 sec
 d12 0.00020000 sec
 PL13 21.00 dB
 d1 2.00000000 sec
 CPDPRG2 waltz16
 PCPD2 80.00 usec
 SF02 400.1342220 MHz
 NUC2 1H
 PL2 0.00 dB
 PL12 21.00 dB
 P1 4.50 usec
 SF01 100.6242960 MHz
 NUC1 13C
 PL1 0.00 dB

F2 - Processing parameters
 S1 32768
 SF 100.6132740 MHz
 NDM EM
 SSB 0
 LB 3.00 Hz
 GB 0
 PC 1.40

ID NMR plot parameters
 CX 20.00 cm
 F1P 181.000 ppm
 F1 18211.00 Hz
 F2P -1.000 ppm
 F2 -100.61 Hz
 PPMCM 9.10000 ppm/cm
 HZCM 915.58081 Hz/cm



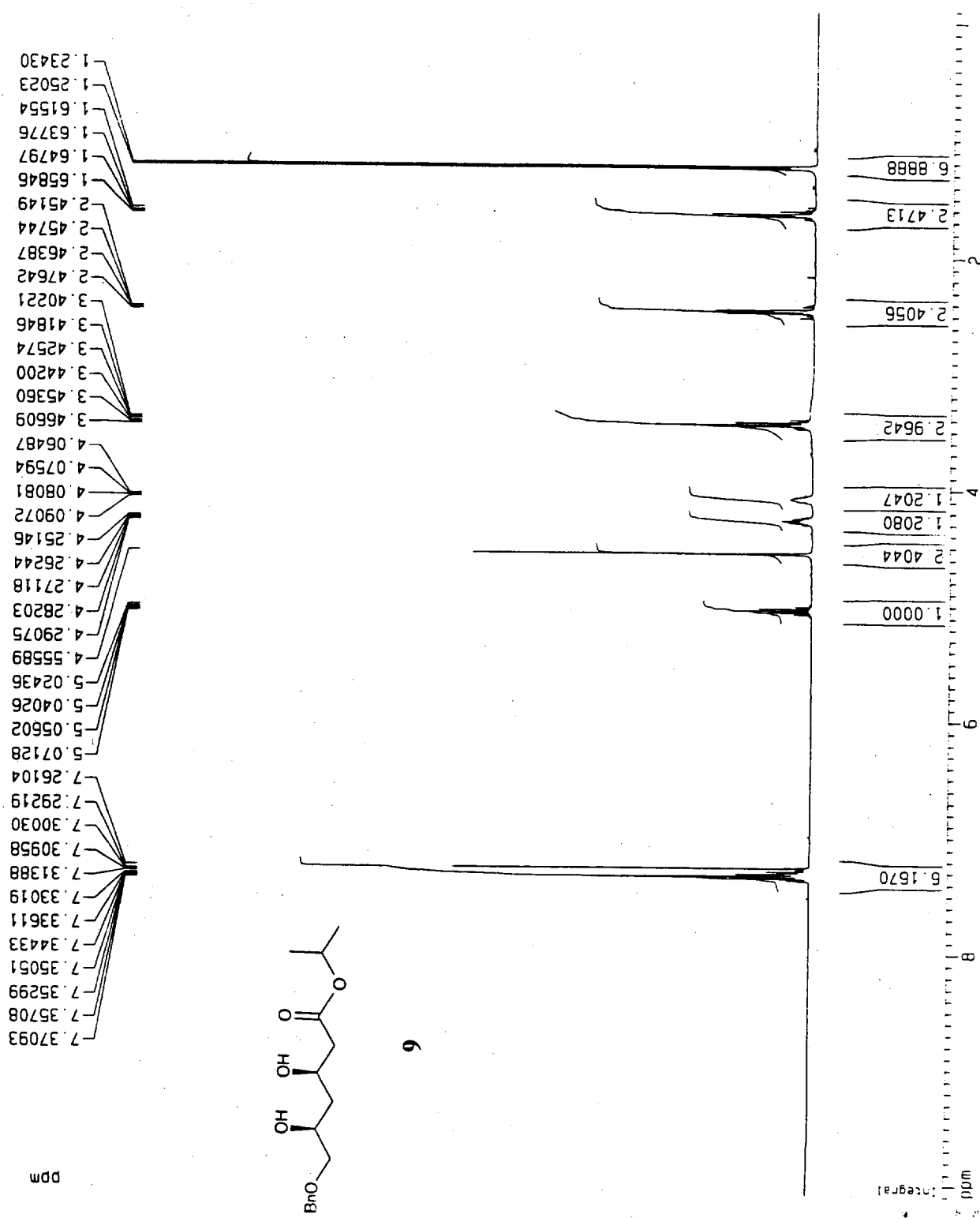
9

Current Data Parameters
 NAME h1/1/13
 EXPNO 15
 PROCNO 1

F2 - Acquisition Parameters
 Date_ 20000113
 Time 10.48
 INSTRUM spect
 PROBHD 5 mm BBI 1H-B
 PULPROG zg
 TD 16384
 SOLVENT COC13
 NS 8
 DS 2
 SWH 4789.272 Hz
 FIDRES 0.292314 Hz
 AQ 1.7105396 sec
 RG 32
 DM 104.400 usec
 DE 6.00 usec
 TE 300.0 K
 D1 1.0000000 sec
 P1 4.00 usec
 SF01 400.1342000 MHz
 NUC1 1H
 PL1 0.00 dB

F2 - Processing parameters
 SI B192
 SF 400.1320090 MHz
 MDW EM
 SSB 0
 LB 0.10 Hz
 GB 0
 PC 1.00

1D NMR plot parameters
 CX 20.00 cm
 F1P 10.100 ppm
 F1 4041.33 Hz
 F2P -0.100 ppm
 F2 -40.01 Hz
 PPMCM 0.51000 ppm/cm
 HZCM 204.06735 Hz/cm





DLMIAG.009
 DATE 27-1-11
 SF 100.1
 SY 74.0
 O1 4970.1
 SI 32768
 TD 32768
 SW 23809
 HZ/PT 1.1
 PW 3.1
 RD 2.1
 AQ 800
 RG 36252
 TE 300
 FW 29800
 O2 6600
 DP 2L CP
 LB 3.1
 GB 0.1
 CX 34.1
 CY 100.1
 F1 199.1
 F2 1.1
 HZ/CM 591
 PPM/CM 5.1
 SR -6118

CDCL3 C13 STANDARD PARAMETERS

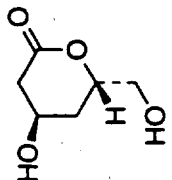
77.226
 76.908
 76.597
 76.245

64.530
 62.692

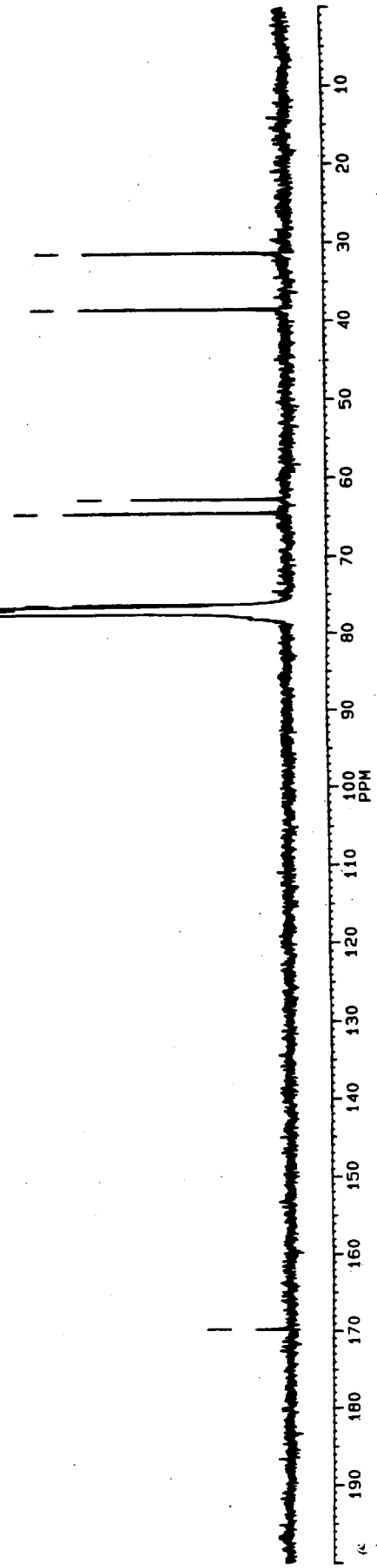
38.451

31.315

159.821



10



ppm