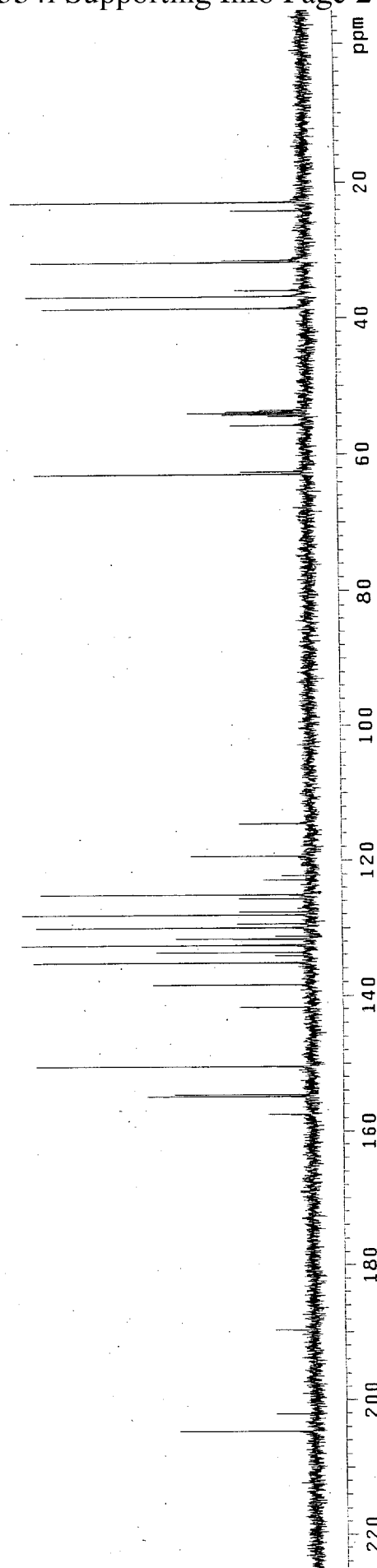
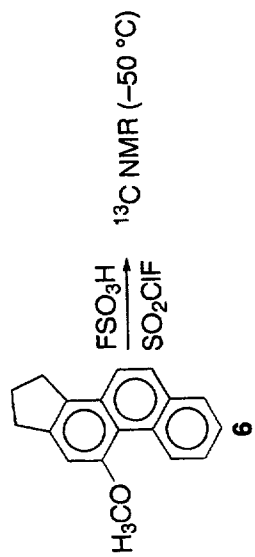
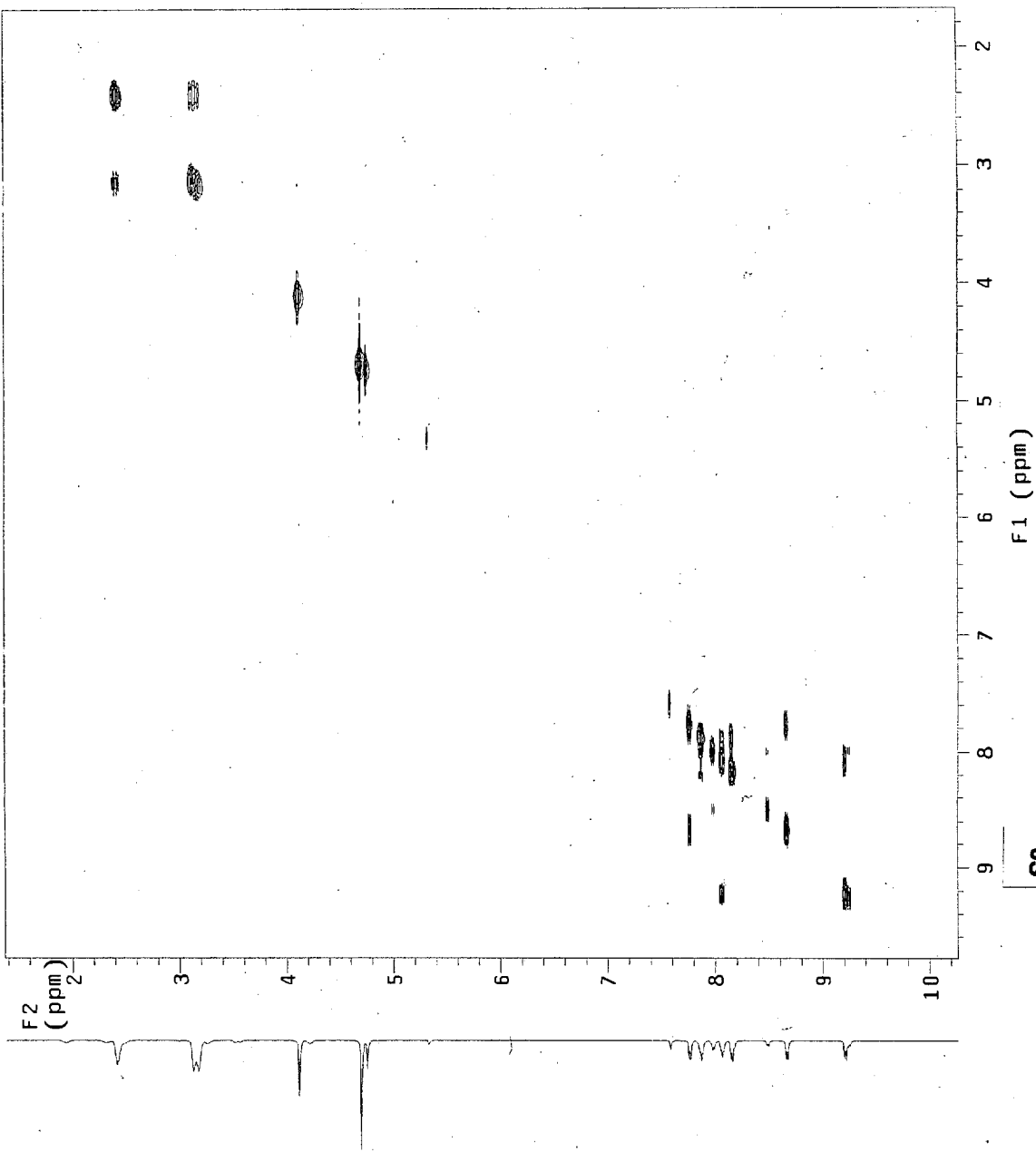
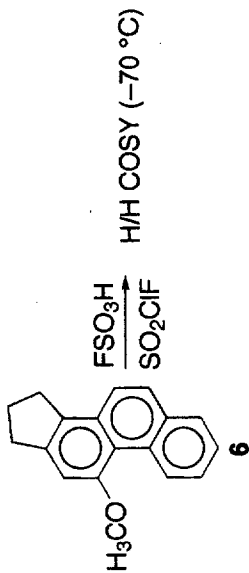


S1

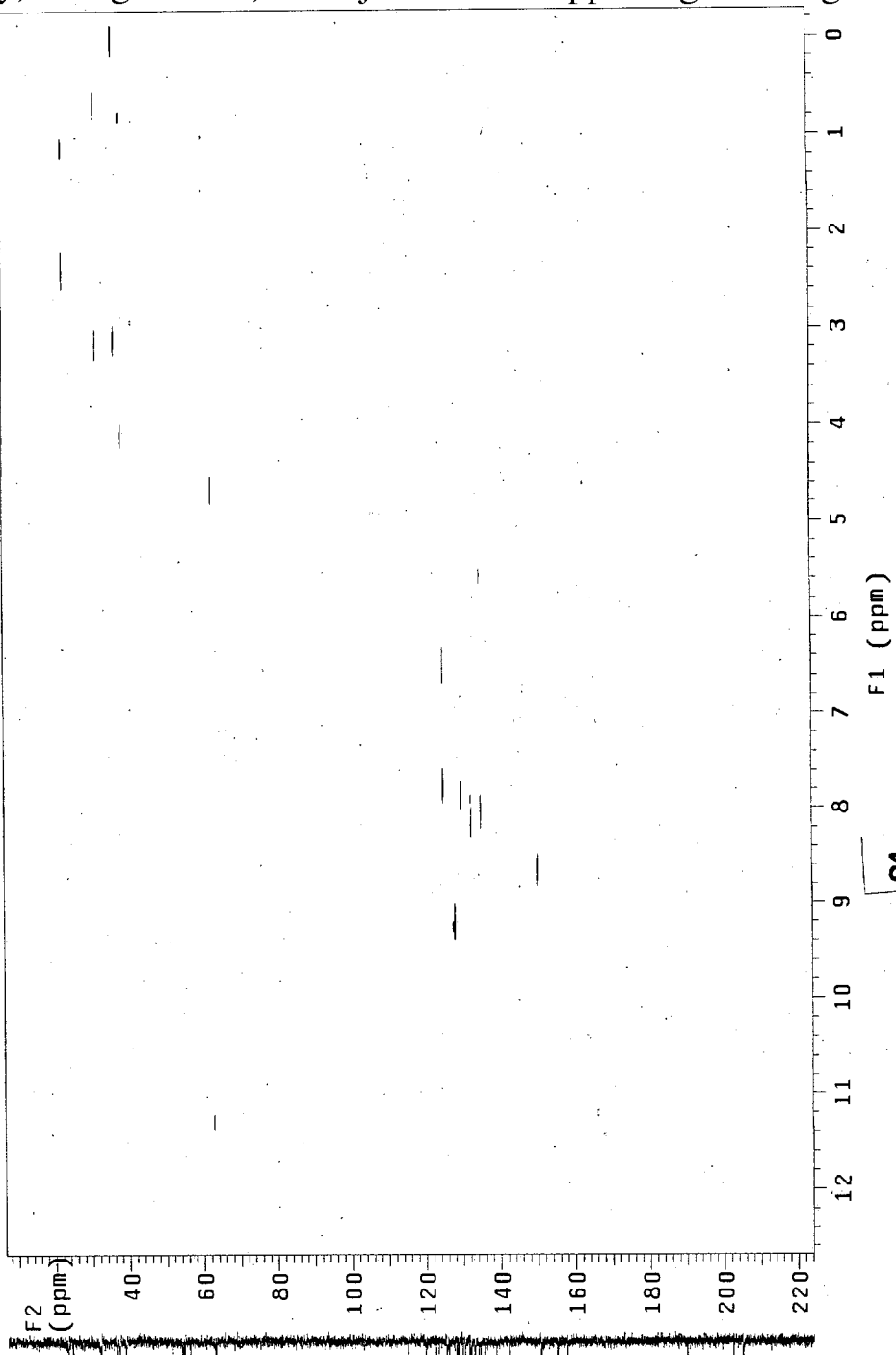
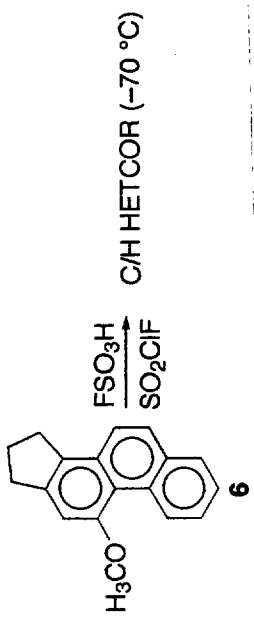


S2

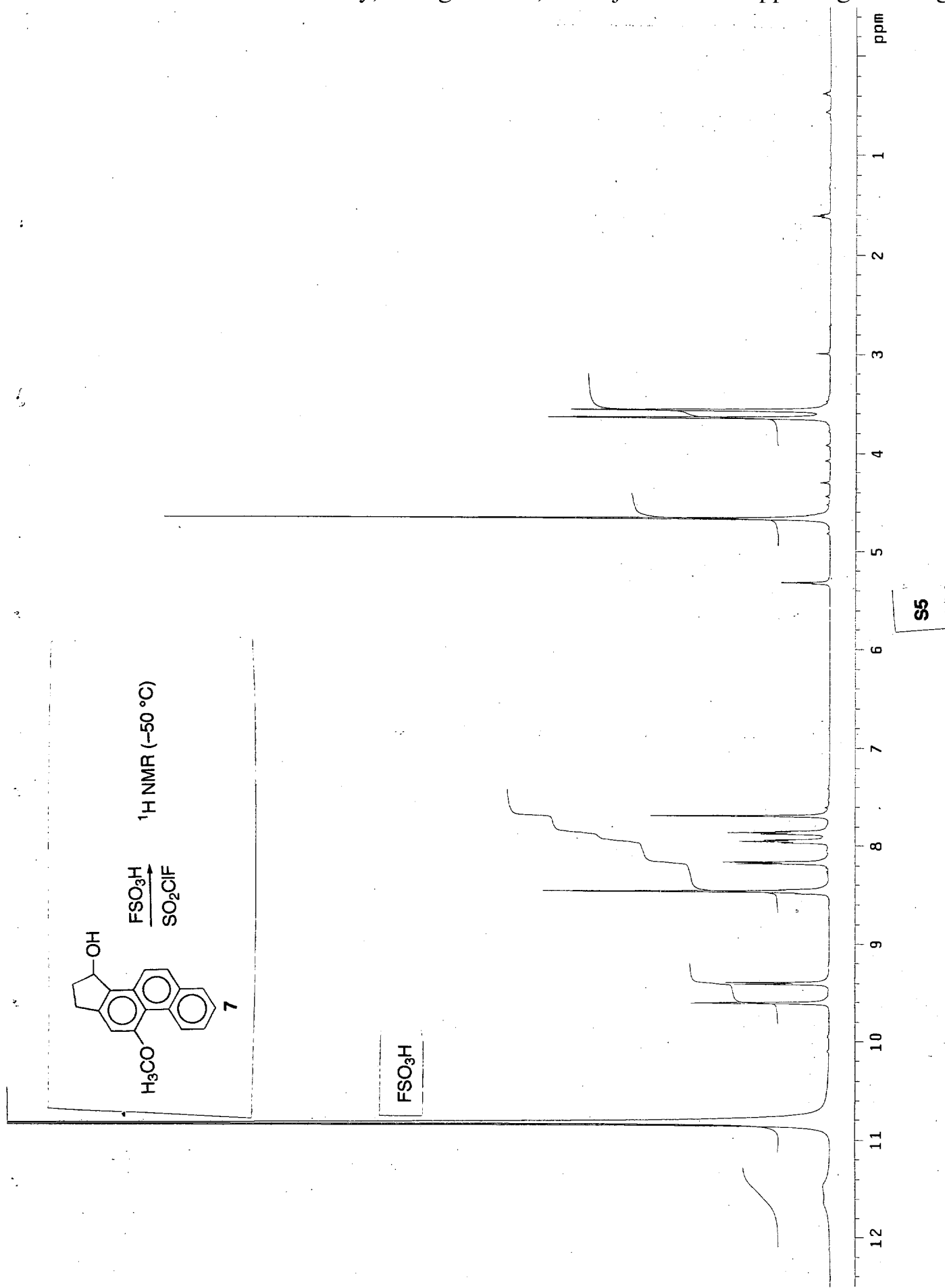
okazaki/cation
 Solvent: CD2Cl2
 Temp. -70.0 C / 203.2 K
 File: t09120901-COSY-CD2Cl2-5
 INOVA-500 "ksu500"
 PULSE SEQUENCE: relayh
 Relax. delay 0.250 sec
 COSY 90-90
 Acq. time 0.616 sec
 Width 6492.5 Hz
 2D Width 6492.5 Hz
 4 repetitions
 128 increments
 OBSERVE H1, 499.9058824 MHz
 DATA PROCESSING
 Sine bell 0.308 sec
 F1 DATA PROCESSING
 Sine bell 0.010 sec
 FT size 8192 x 512
 Total time 7 minutes

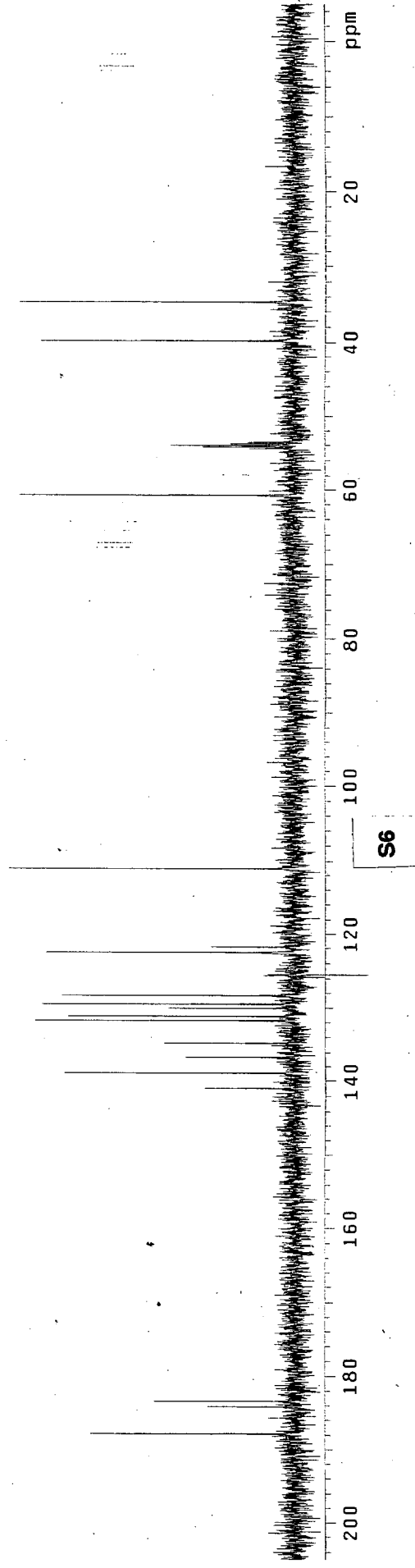
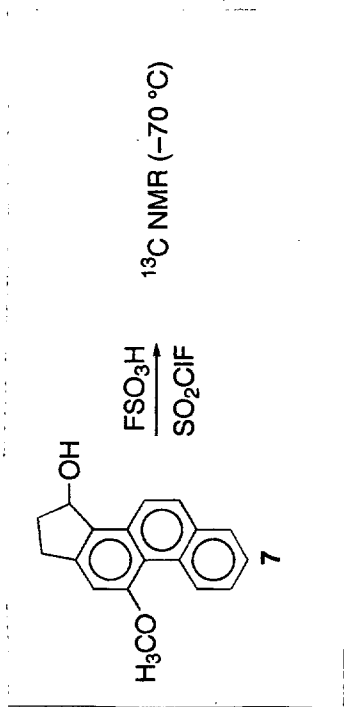


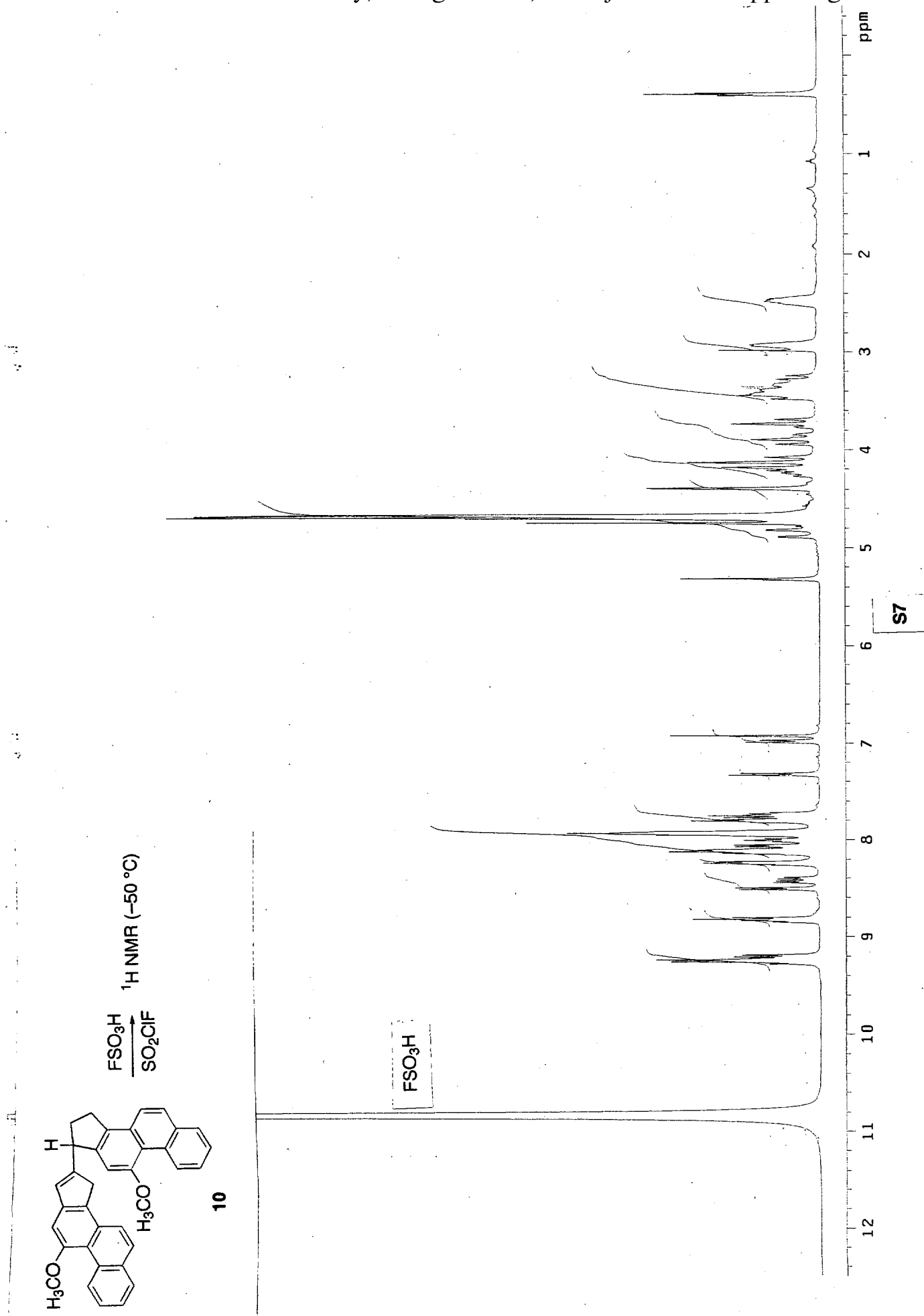
STANDARD CARBON PARAMETERS
 Solvent: CD2CL2
 Temp. -70.0 C / 203.2 K
 User: 1-14-87
 File: 1099120901-HETCOR-CD2CL2-5
 INVA-500 "KSU500"
 PULSE SEQUENCE: hetcor
 Relax. delay 0.600 sec
 Acq. time 0.146 sec
 Width 27341.1 Hz
 2D Width 6484.6 Hz
 52 repetitions
 128 increments
 OBSERVE C13, 125.7013345 MHZ
 DECOUPLE H1, 499.9089815 MHZ
 Power 35 dB
 on during acquisition
 off during delay
 WALTZ-16 modulated
 DATA PROCESSING
 Sine bell 0.037 sec
 F1 DATA PROCESSING
 Sine bell 0.020 sec
 FT size 8192 x 1024
 Total time 83 minutes

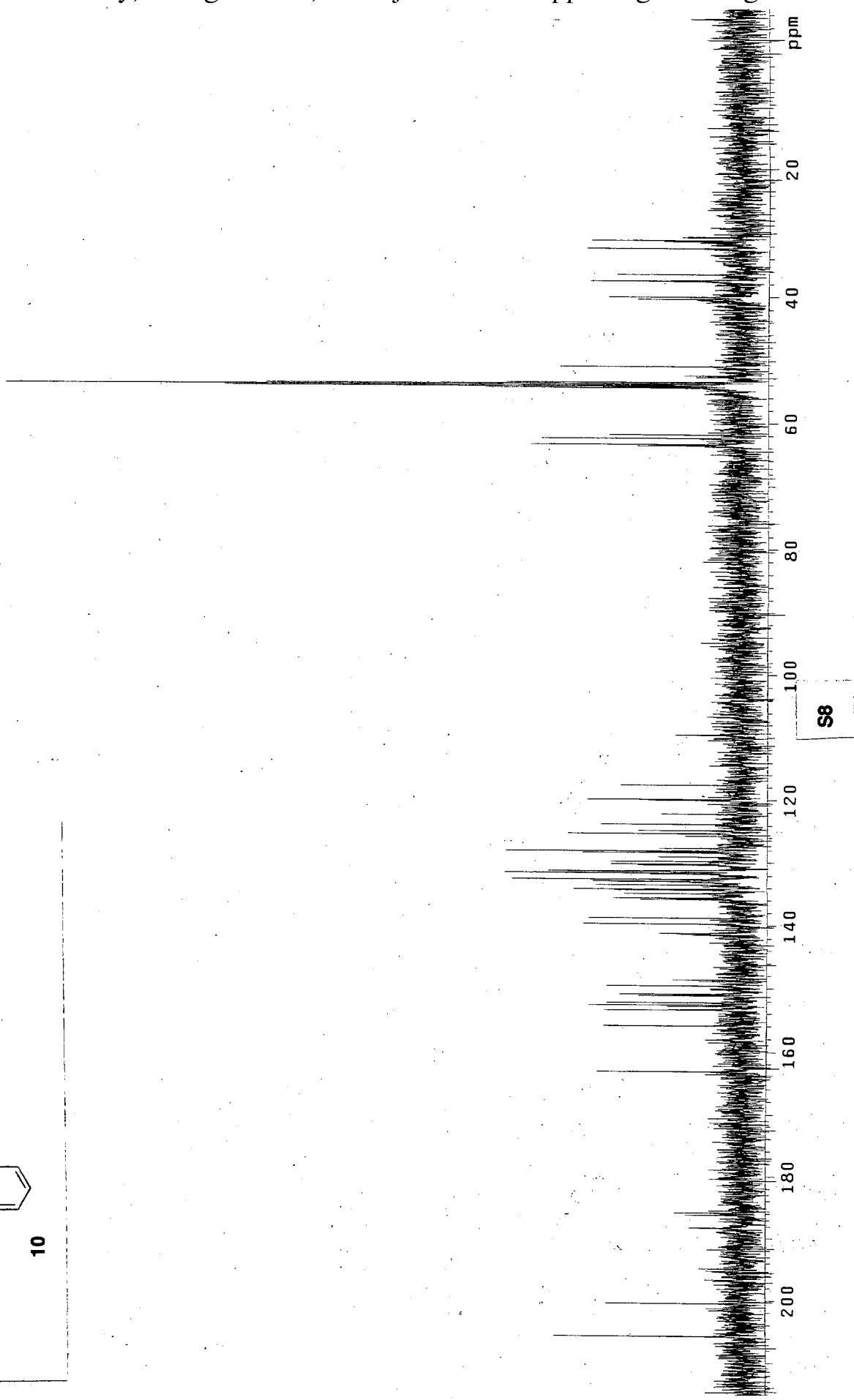
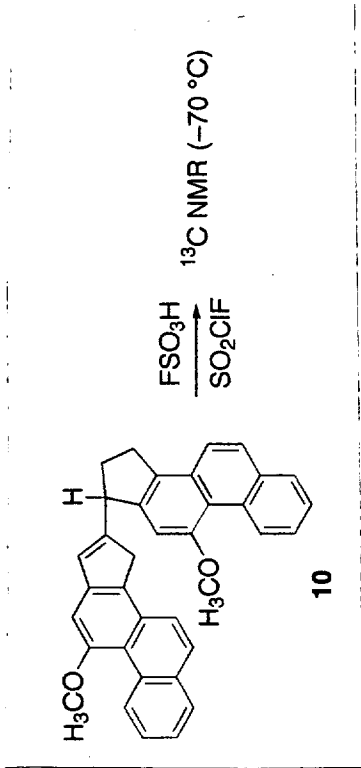


S4









okazaki/cation
 Solvent: CD2CL2
 Temp. -70.0 C / 203.2 K
 File: to99121003-COSY70-CD2CL2-5
 INOVA-500 "ksu500"
 PULSE SEQUENCE: relayh
 Relax. delay 0.250 sec
 COSY 90-90
 Acq. time 0.613 sec
 Width 6419.5 Hz
 20 Width 6419.5 Hz
 4 repetitions
 128 increments
 OBSERVE HI, 499.9058825 MHz
 DATA PROCESSING
 Sine bell 0.307 sec
 F1 DATA PROCESSING
 Sine bell 0.010 sec
 FT size 8192 x 512
 Total time 7 minutes

