

Terms & Conditions

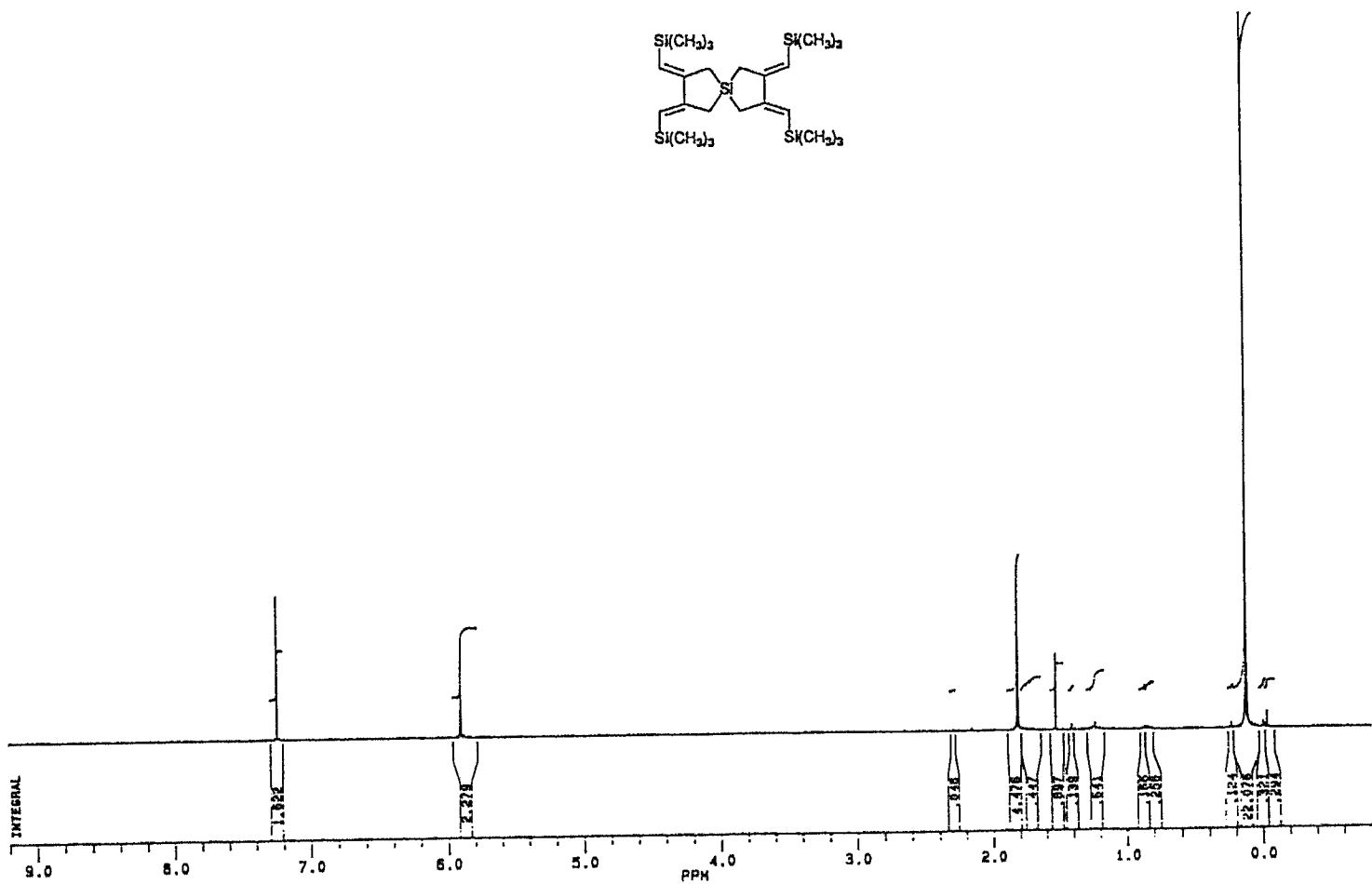
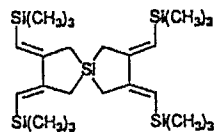
Electronic Supporting Information files are available without a subscription to ACS Web Editions. The American Chemical Society holds a copyright ownership interest in any copyrightable Supporting Information. Files available from the ACS website may be downloaded for personal use only. Users are not otherwise permitted to reproduce, republish, redistribute, or sell any Supporting Information from the ACS website, either in whole or in part, in either machine-readable form or any other form without permission from the American Chemical Society. For permission to reproduce, republish and redistribute this material, requesters must process their own requests via the RightsLink permission system. Information about how to use the RightsLink permission system can be found at <http://pubs.acs.org/page/copyright/permissions.html>



ACS Publications

MOST TRUSTED. MOST CITED. MOST READ.

11



DD260F.103
 AU PROS:
 X00.AU
 DATE 26-6-89
 TIME 9:58

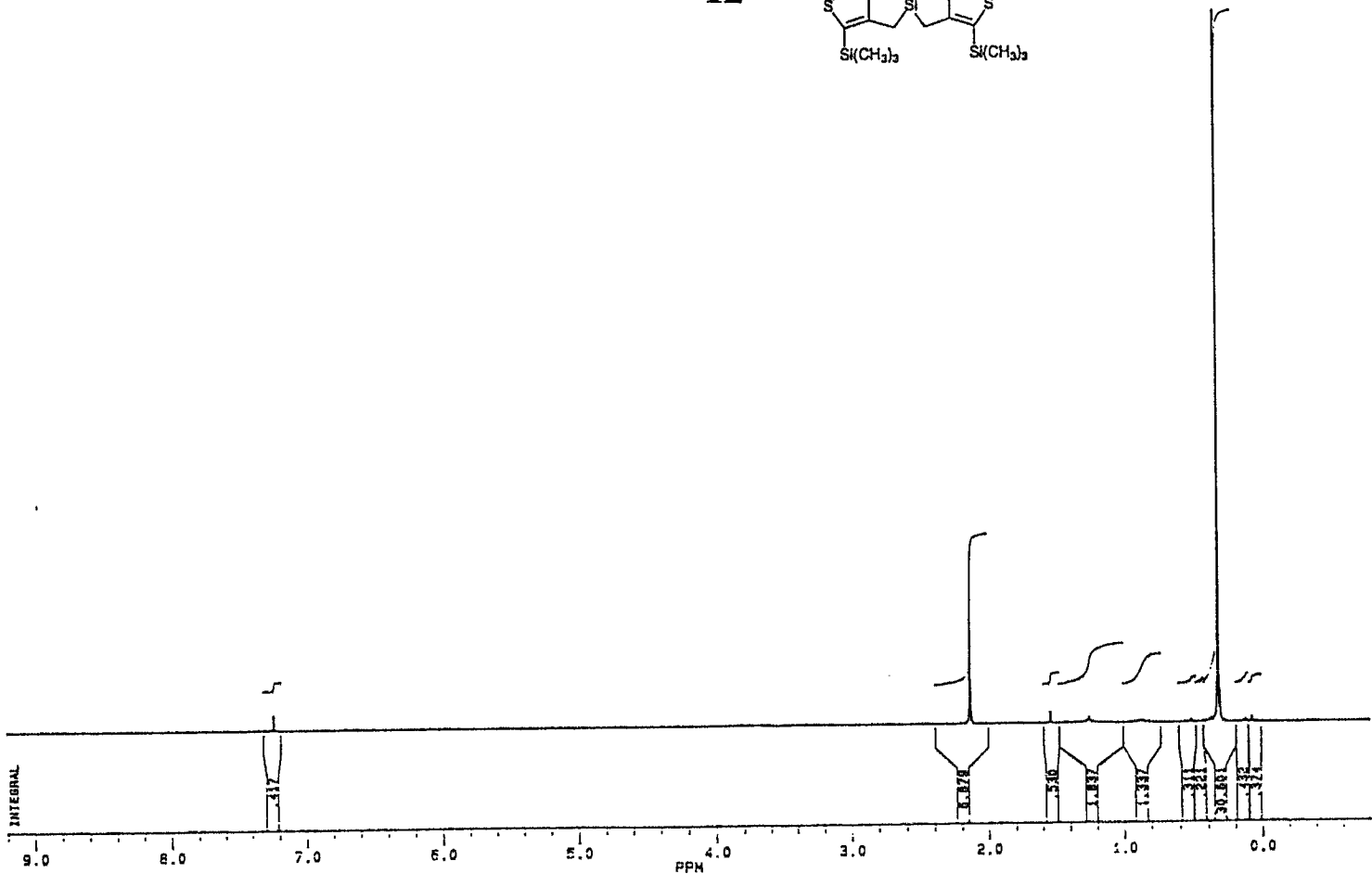
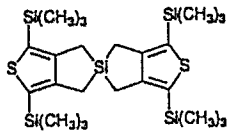
SOLVENT CDC13
 SF 500.135
 SY 166.0
 D1 7932.010
 SI 131072
 TD 65536
 SK 10000.000
 HZ/PT .153

AD 3.277
 RG 100
 NS 32
 TE 297

FM 12500
 G2 32000.000
 CP 63.00

LB .070
 GB 0.0
 CX 33.00
 CH 38.00
 F1 8.201P
 F2 -1.799P
 HZ/CM 142.892
 PPM/CM .286
 SR 5431.33

D1 0.0
 PG 0.0
 RGA 0.0
 RC 0.0
 PH 0.0
 CH 0.0
 DS 0.0
 CS 0.0
 SC 0.0
 BK 1



CD290F.106
 AU PROG:
 X00.AU
 DATE 28-6-89
 TIME 11:31

SOLVENT CDCl₃
 SF 300.133
 SY 100.0
 O1 4873.000
 SI 65336
 TD 32768
 SA 5024.096
 HZ/PT .184

AD 2.720
 RG 32
 NS 32
 TE 297

FX 7600
 O2 3200.000
 DP 63L PQ

LB .090
 SB .500
 CX 35.00
 CY 18.00
 F1 9.200P
 F2 .800P
 HZ/CM 85.734
 PPM/CM .288
 SR 3373.00

D1 0.0
 PD 0.0
 RZA 0.0
 RD 0.0
 PW 0.0
 DE 0.0
 NS 32
 DS 0
 DS 0.0
 RE 1



CK050F.134
 AU PROB:
 X00.AU
 DATE 6-1-90
 TIME 11:18

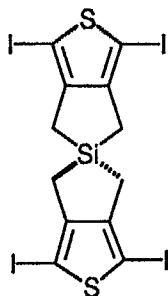
SOLVENT CDCl3
 SF 300.133
 SY 100.0
 O1 4873.000
 S1 85538
 TD 32788
 SW 6024.088
 HZ/PT .184

AG 2.720
 RG 400
 NS 32
 TE 297

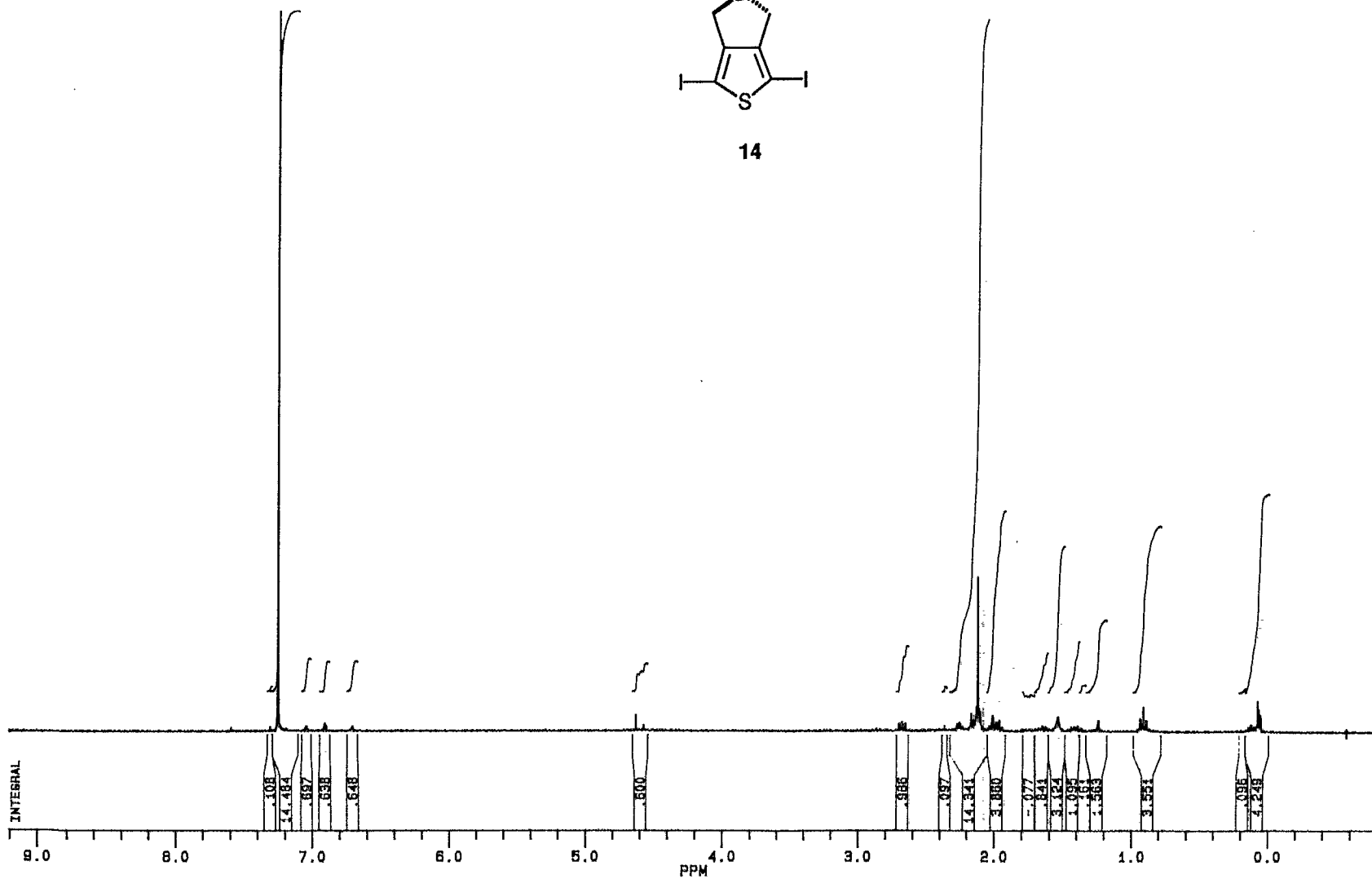
FW 7600
 O2 3200.000
 DP 63L P0

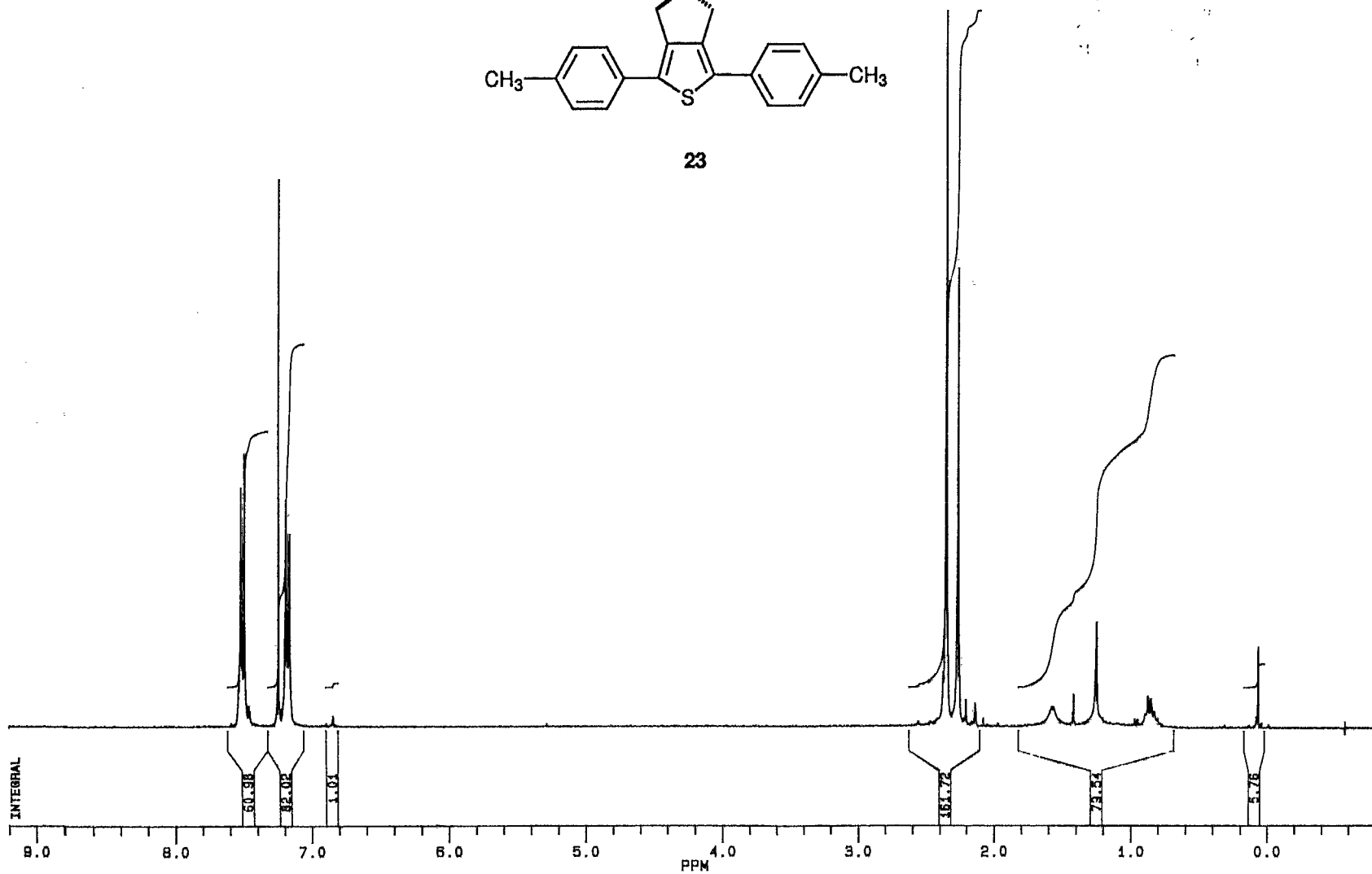
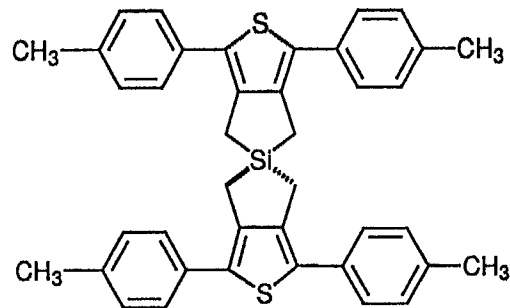
LB .090
 GB .500
 CX 35.00
 CY 18.00
 F1 8.200P
 F2 -.800P
 HZ/CM 85.784
 PPM/CM .288
 SR 3373.00

D1 0.0
 PO 0.0
 RGA
 RD 0.0
 PW 0.0
 DE 0.0
 NS 32
 DS 0
 DS 0.0
 NE 1



14





CK250F.134
 AU PROG:
 X00.AU
 DATE 25-1-90
 TIME 21:55

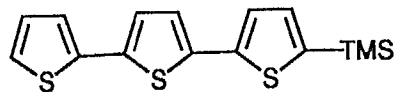
SOLVENT CDC13
 SF 300.133
 SY 100.0
 O1 4873.000
 SI 65536
 TD 32768
 SW 6024.096
 HZ/PT .184

AQ 2.720
 RG 100
 NS 32
 TE 297

FW 7600
 O2 3200.000
 DP 83L P0

LB .090
 SB .500
 CX 35.00
 CY 18.00
 F1 9.200P
 F2 .800P
 HZ/CM 85.754
 PPM/CM .288
 SR 3373.00

D1 0.0
 PO 0.0
 RGA
 RD 0.0
 PW 0.0
 DE 0.0
 NS 32
 DS 0
 DS 0.0
 NE 1



26



CN240F.109
 AU PROG:
 X00.AU
 DATE 24-4-90
 TIME 12:58

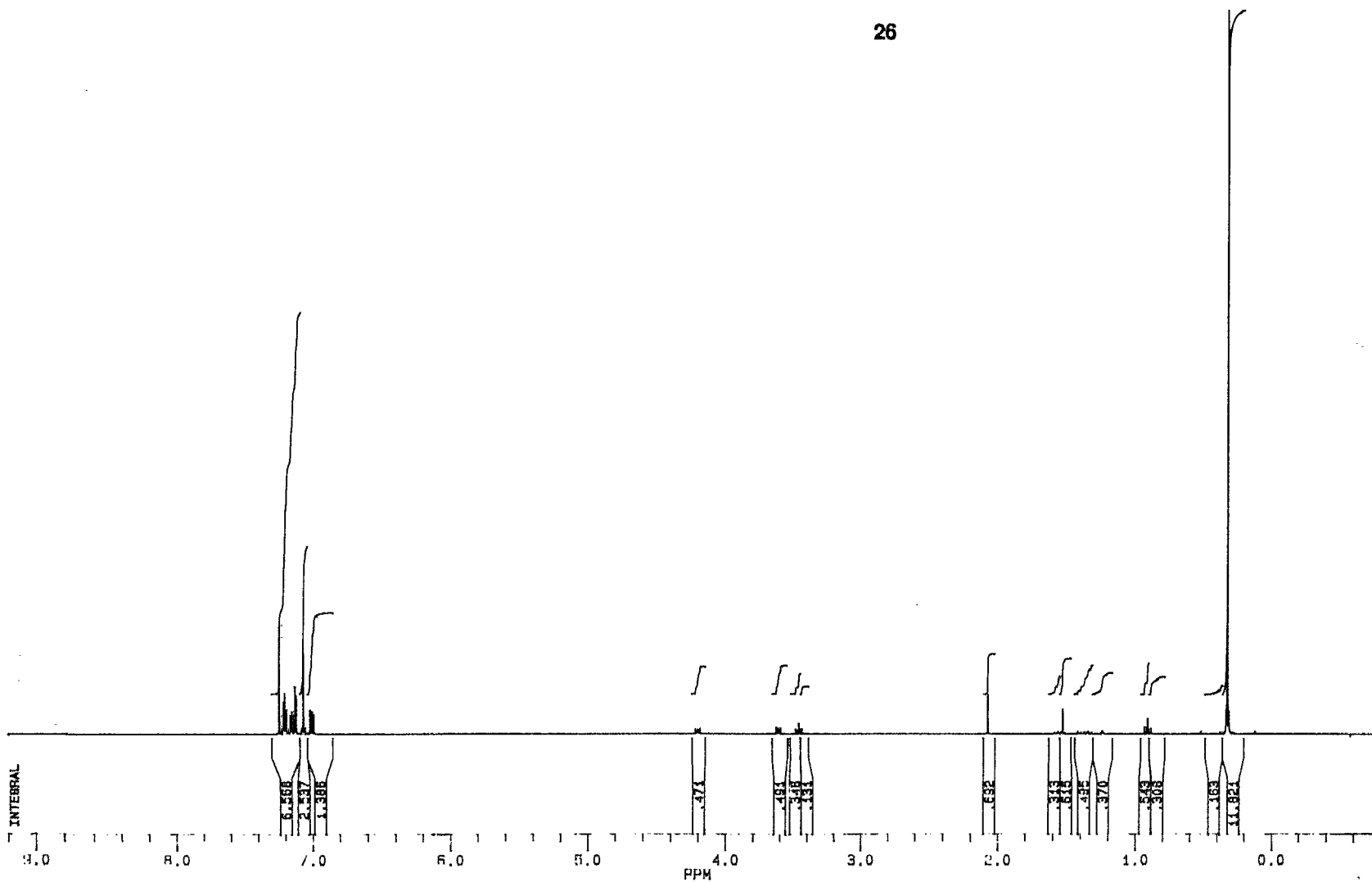
 SOLVENT CDC13
 SF 300.133
 SY 100.0
 O1 4873.000
 SI 65536
 TD 32768
 SW 6024.096
 HZ/PT .164

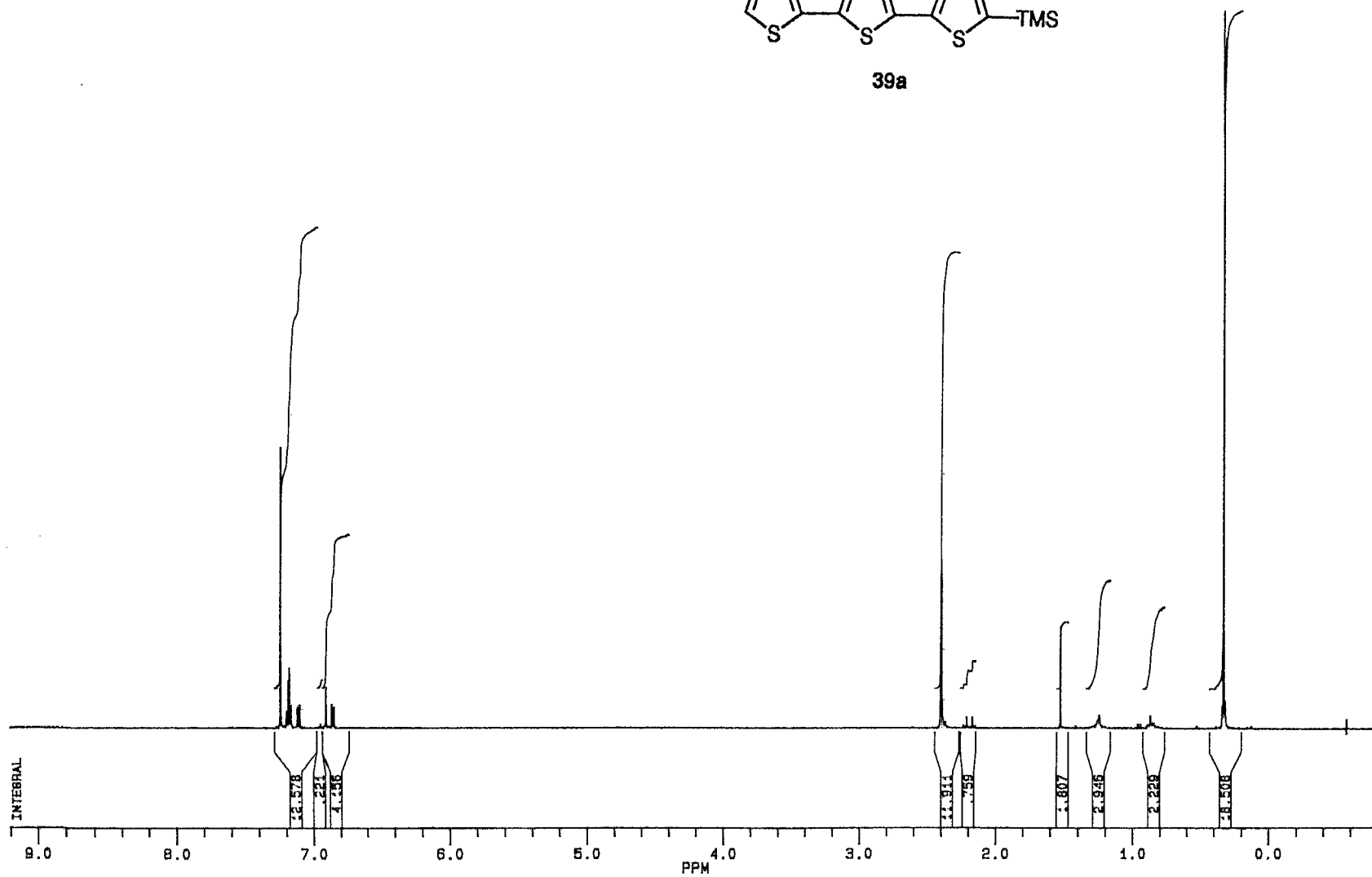
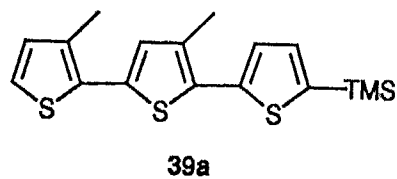
 AQ 2.720
 RG 200
 NS 32
 TE 297

 FW 7600
 O2 3200.000
 DP 63L PD

 LB .090
 GB .500
 CX 35.00
 CY 18.00
 F1 9.200P
 F2 -.800P
 HZ/CM 85.754
 PPM/CM .286
 SH 3373.00

 D1 0.0
 PQ 0.0
 R8A
 RD 0.0
 PW 0.0
 DE 0.0
 NS 32
 DS 0
 DS 0
 NE 1





~~BRUKER~~

CQ240F.128
 AU PRO8:
 X00.AU
 DATE 24-7-90
 TIME 23: 20

SOLVENT CDC13
 SF 300.133
 SY 100.0
 O1 4873.000
 S1 65536
 TD 32768
 SW 6024.096
 HZ/PT .184

AQ 2.720
 RG 400
 NS 32
 TE 297

FW 7600
 O2 3200.000
 DP 63L P0

LB .090
 RB .500
 CX 35.00
 CY 18.00
 F1 9.200P
 F2 .800P
 HZ/CM 88.764
 PPM/CM .286
 SR 3373.00

D1 0.0
 P0 0.0
 RGA
 RD 0.0
 PW 0.0
 DE 0.0
 NS 32
 DS 0
 DS 0.0
 NE 1



CS240F.123
 AU PROG:
 X00.AU
 DATE 24-9-90
 TIME 17:35

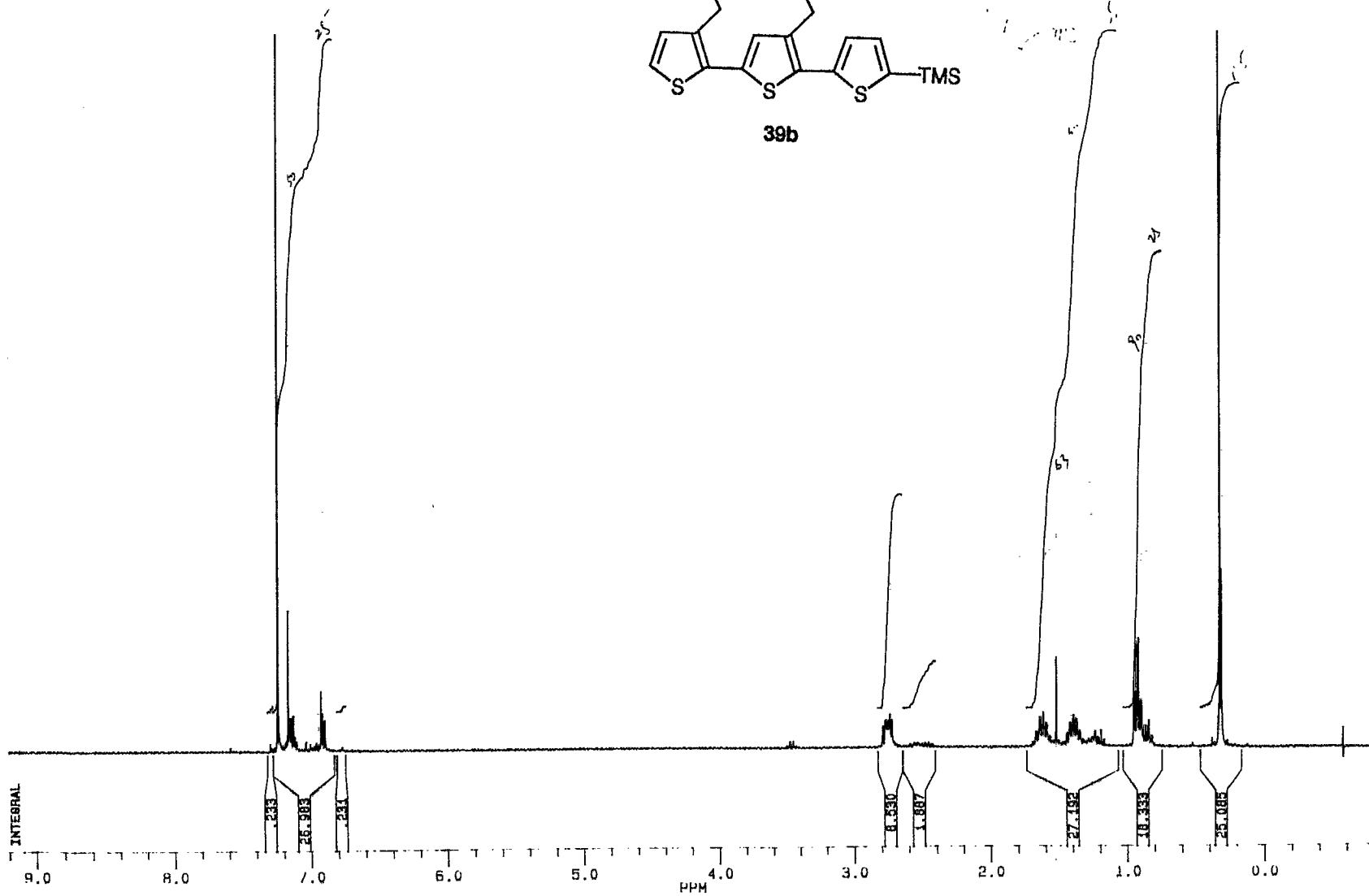
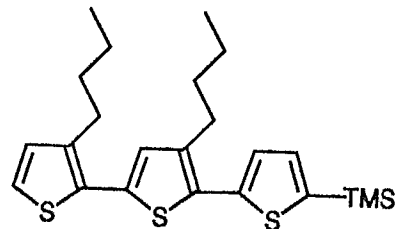
SOLVENT CDC13
 SF 300.133
 SY 100.0
 O1 4873.000
 SI 65536
 TO 32768
 SW 6024.096
 HZ/PT .184

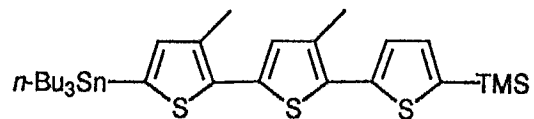
AQ 2.720
 RG 400
 NS 32
 TE 297

FW 7600
 D2 3200.000
 DP 63L P0

LB .090
 GB .500
 CX 38.00
 CY 18.00
 F1 9.200P
 F2 -.800P
 HZ/CM 85.754
 PPM/CM .286
 SH 3373.00

D1 0.0
 PO 0.0
 RGA 0.0
 RD 0.0
 PW 0.0
 DE 0.0
 NS 32
 DS 0
 DS 0.0
 NE 1





40a



DZ220F.118
 AU PROG:
 X00.AU
 DATE 23-4-94
 TIME 0:11

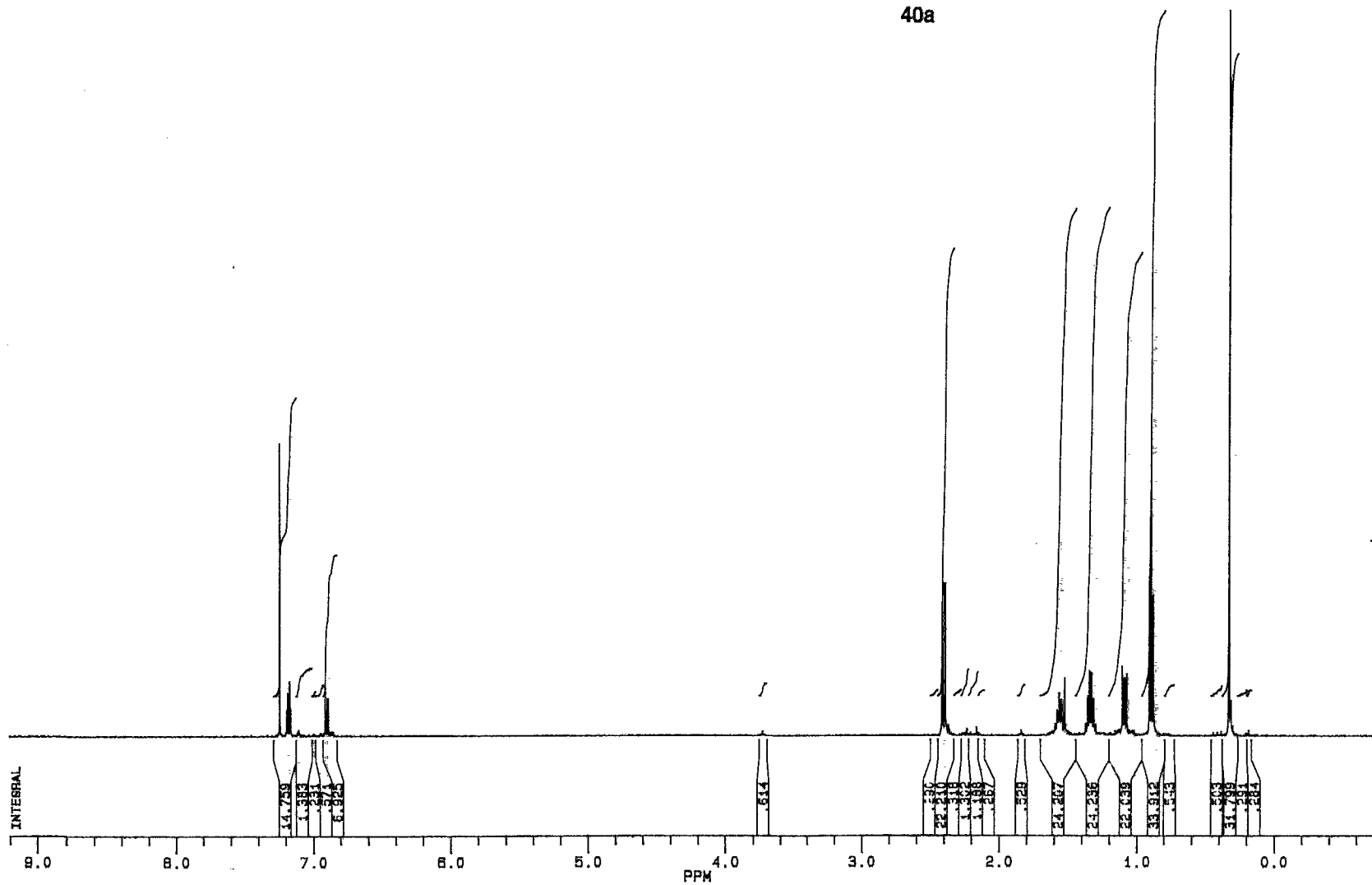
SOLVENT CDC13
 SF 500.135
 SY 60.0
 Q1 7932.010
 SI 131072
 TD 65536
 SW 10000.000
 HZ/PT .153

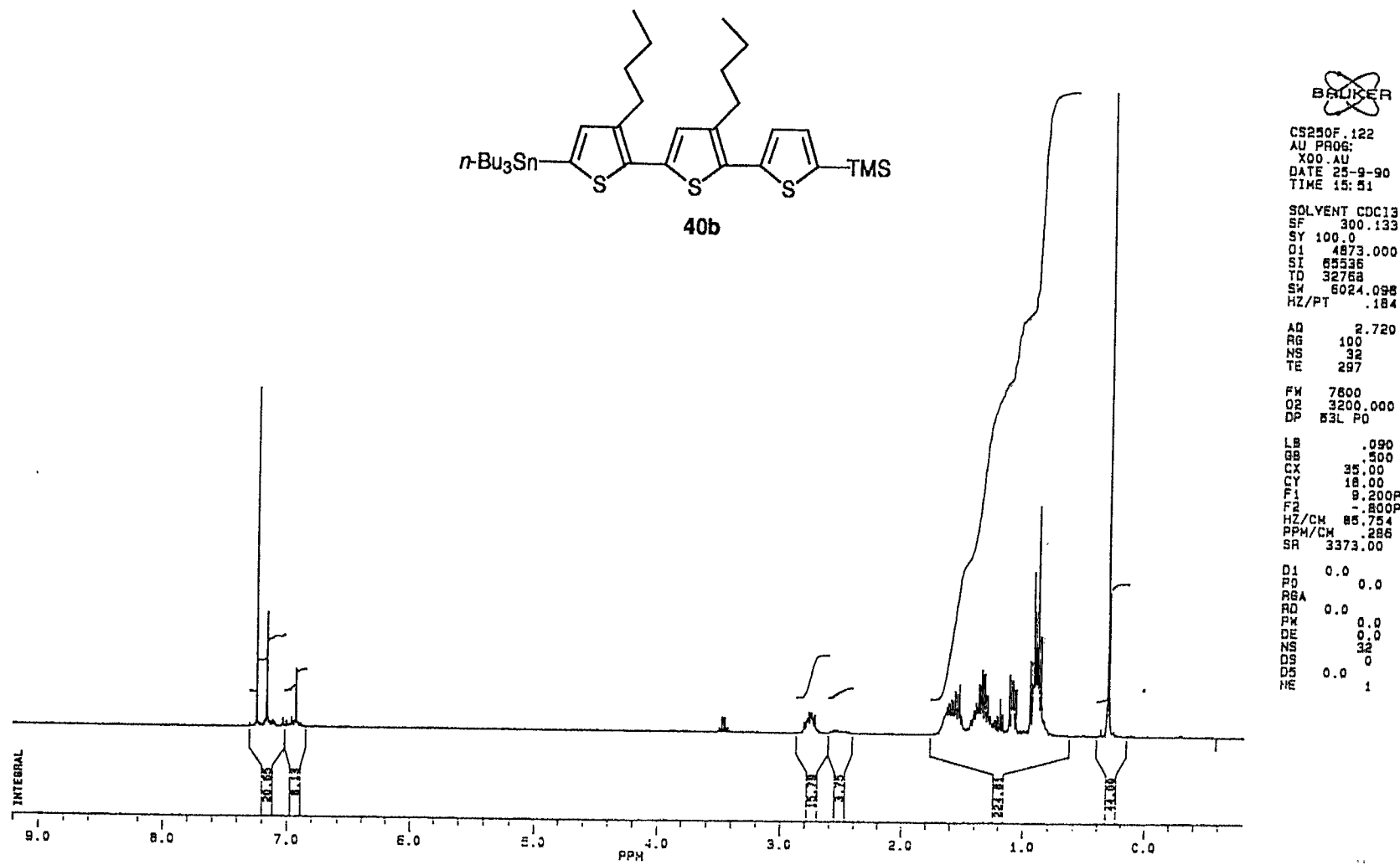
AQ 3.277
 RG 81
 NS 32
 TE 297

FW 12500
 Q2 32000.000
 DP 63L D0

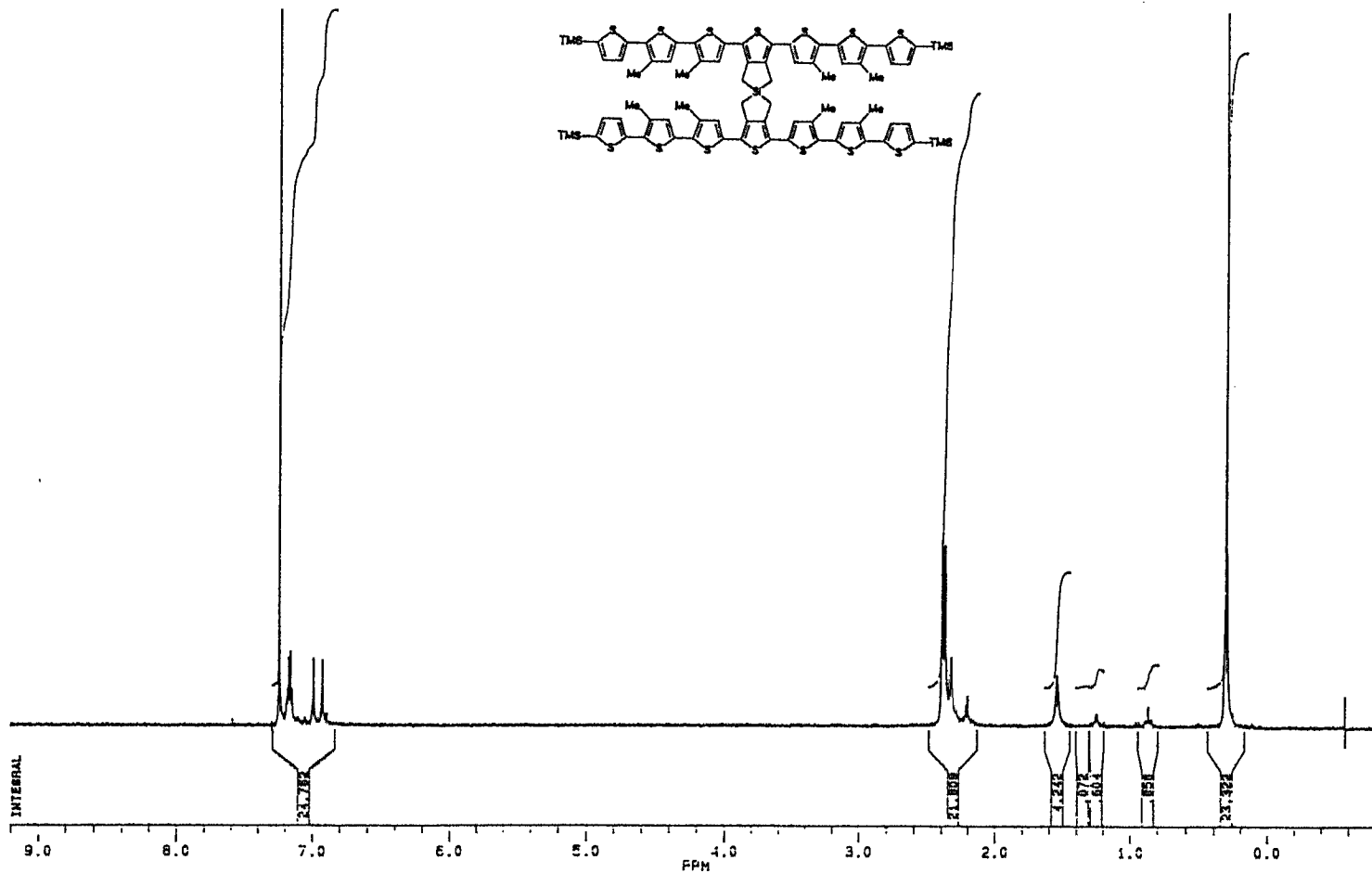
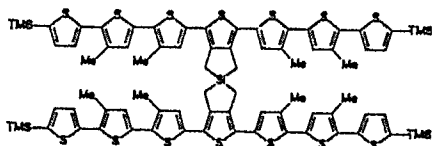
LB .070
 GB 0.0
 CX 35.00
 CY 18.00
 F1 9.200P
 F2 -1.800P
 HZ/CM 142.866
 PPM/CM .286
 SR 5431.33

D1 0.0
 P0 0.0
 RGA
 RD 0.0
 PW 0.0
 DE 0.0
 NS 32
 DS 0
 DS 0.0
 ZF 1





41



CT020F.116
 AU PROG:
 X00.AU
 DATE 2-10-90
 TIME 13:06

SOLVENT CDCl3
 SF 300.133
 SY 100.0
 O1 4873.000
 SI 65536
 TD 32768
 SW 6024.096
 HZ/PT .184

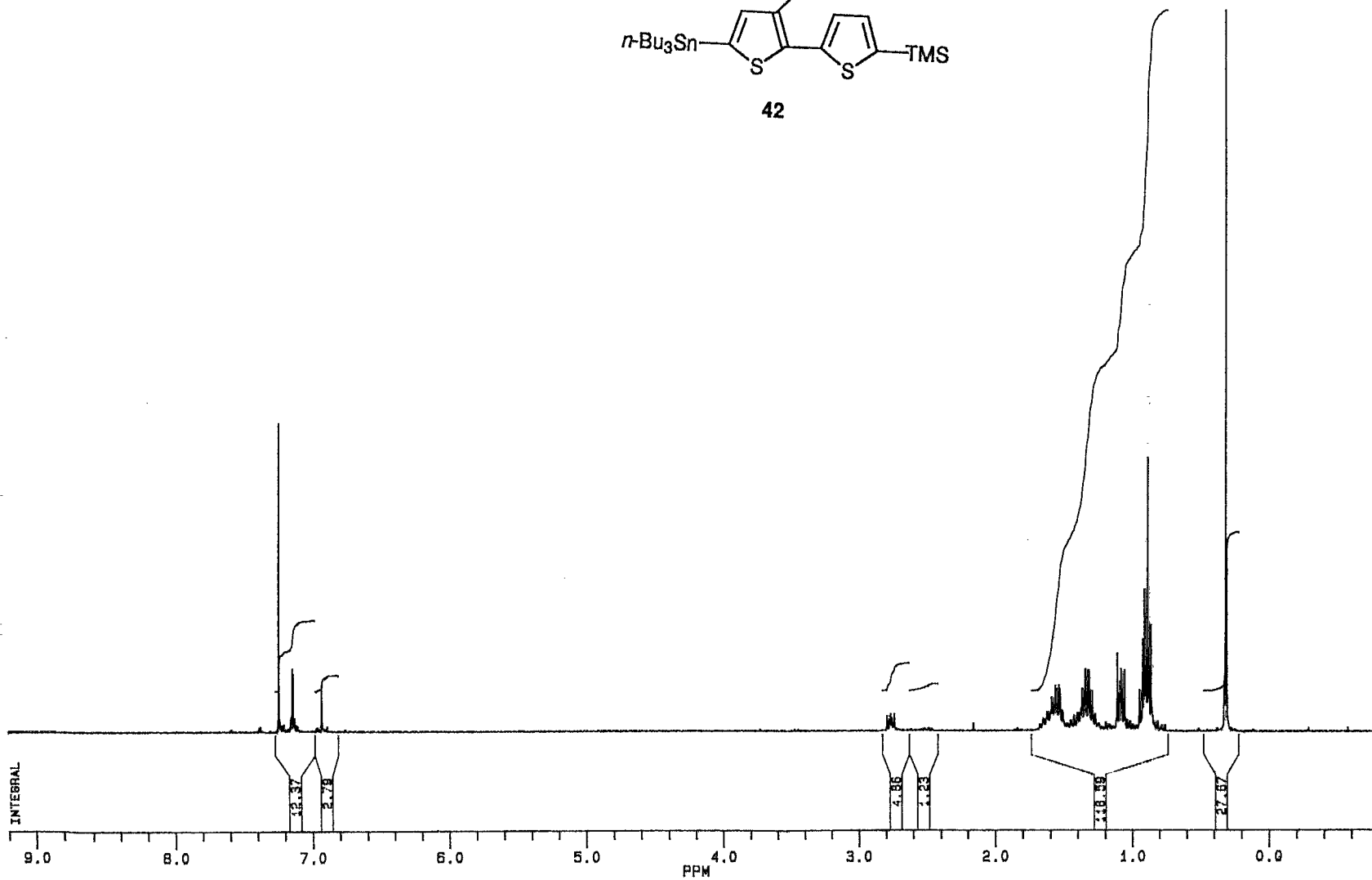
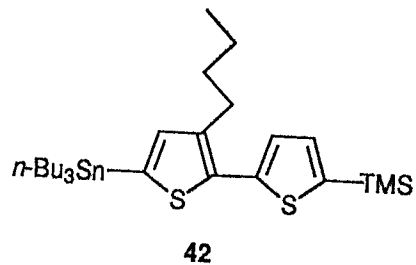
AQ 2.720
 RG 400
 NS 32
 TE 297

FW 7600
 O2 3200.000
 DP 63L PO

LS .090
 GB .500
 CX 31.00
 CY 36.00
 F1 8.200P
 F2 1.800P
 HZ/CM 85.754
 PPM/CM 3373.00
 SR

D1 0.0
 P0 0.0
 RGA
 RD 0.0
 PW 0.0
 DE 0.0
 MS 32
 DS 0
 CS 0
 IE 1

77



~~BRUKER~~

EI020F.134
 AU PROG:
 X00.AU
 DATE 1-1-92
 TIME 21:55

SOLVENT CDC13
 SF 300.133
 SY 100.0
 O1 4873.000
 S1 65536
 TD 32768
 SW 6024.086
 HZ/PT .184

AQ 2.720
 RG 100
 NS 32
 TE 297

FW 7600
 O2 3200.000
 DP 63L P0

LB .090
 SB .500
 CX 35.00
 CY 18.00
 F1 9.200P
 F2 .800P
 HZ/CM 85.754
 PPM/CM .288
 SR 3373.00

D1 1.000000
 PO 5.00
 RGA
 RD 0.0
 PW 0.0
 DE 103.80
 NS 32
 DS 0
 DS 1.0010000
 NE 1



EH050F.141
 AU PROG:
 X00.AU
 DATE 5-12-91
 TIME 23:51

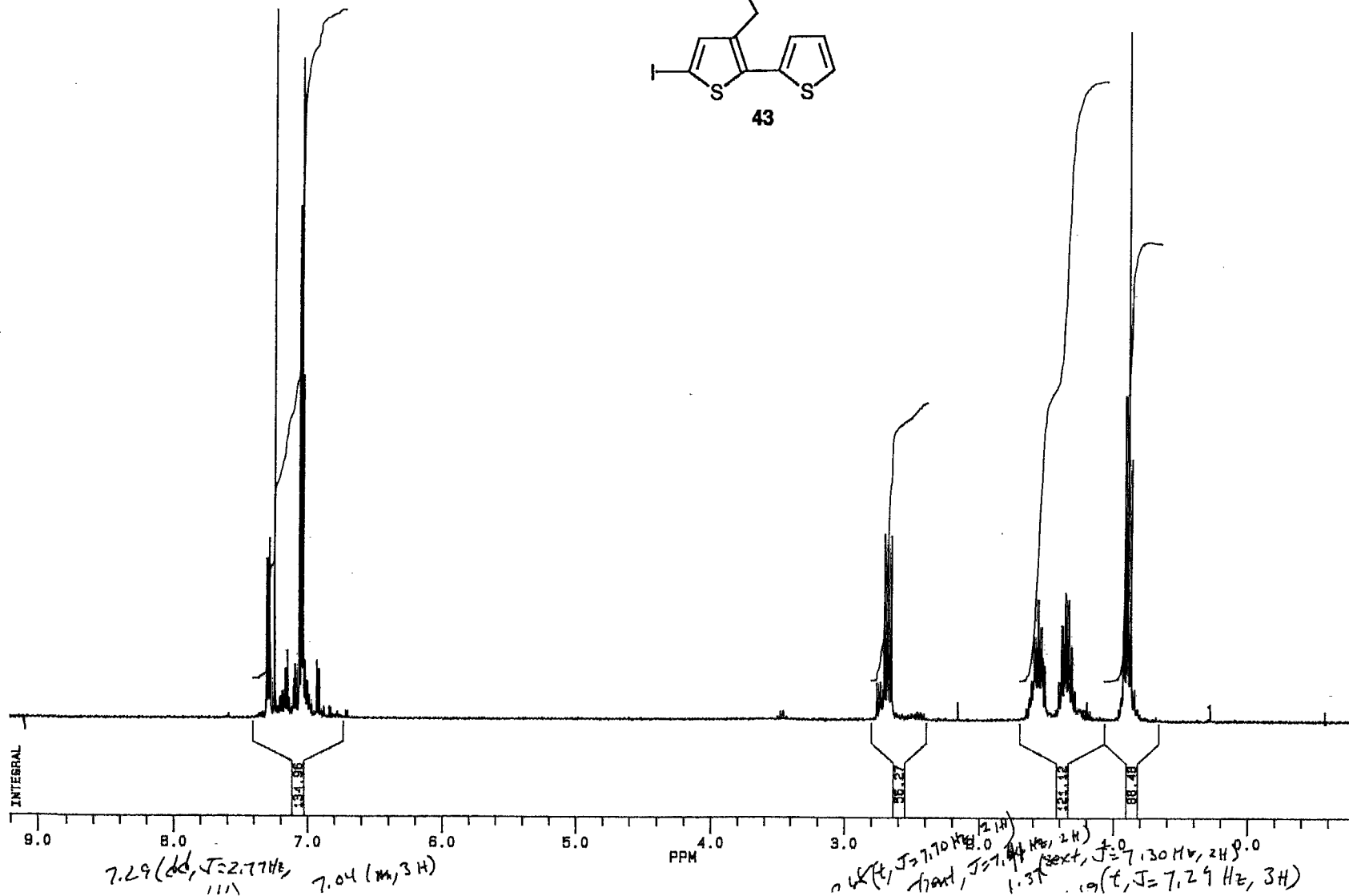
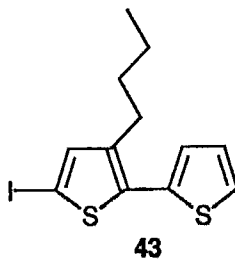
SOLVENT CDCl3
 SF 300.133
 SY 100.0
 O1 4873.000
 SI 85536
 TD 32768
 SW 6024.088
 HZ/PT .184

AQ 2.720
 RB 160
 NS 32
 TE 297

FW 7800
 O2 3200.000
 DP 63L P0

LB .090
 SB .500
 CX 38.00
 CY 18.00
 F1 8.200P
 F2 -.800P
 HZ/CM 85.754
 PPM/CM .288
 SR 3373.00

D1 1.0000000
 PD 5.00
 RBA
 RD 0.0
 PM 0.0
 DE 103.80
 NS 32
 DS 0
 D5 .0010000
 NE 1





EI100F.171
 AU PROG:
 X00.AU
 DATE 12-1-92
 TIME 13:25

SOLVENT CDCl3
 SF 300.133
 SY 100.0
 O1 4873.000
 SI 65536
 TD 32768
 SW 6024.086
 HZ/PT .184

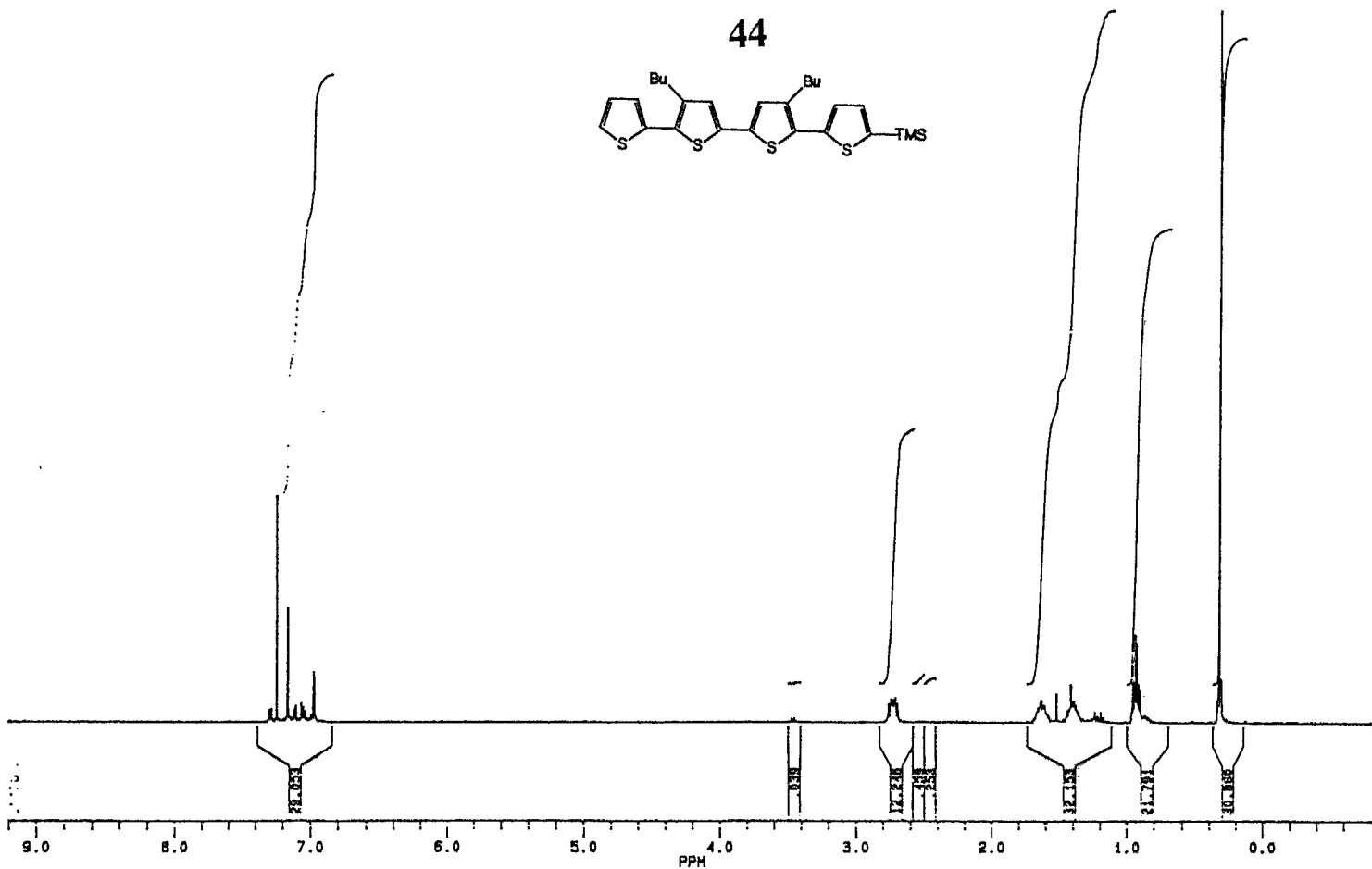
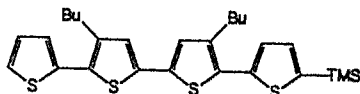
AQ 2.720
 R6 200
 NS 32
 TE 297

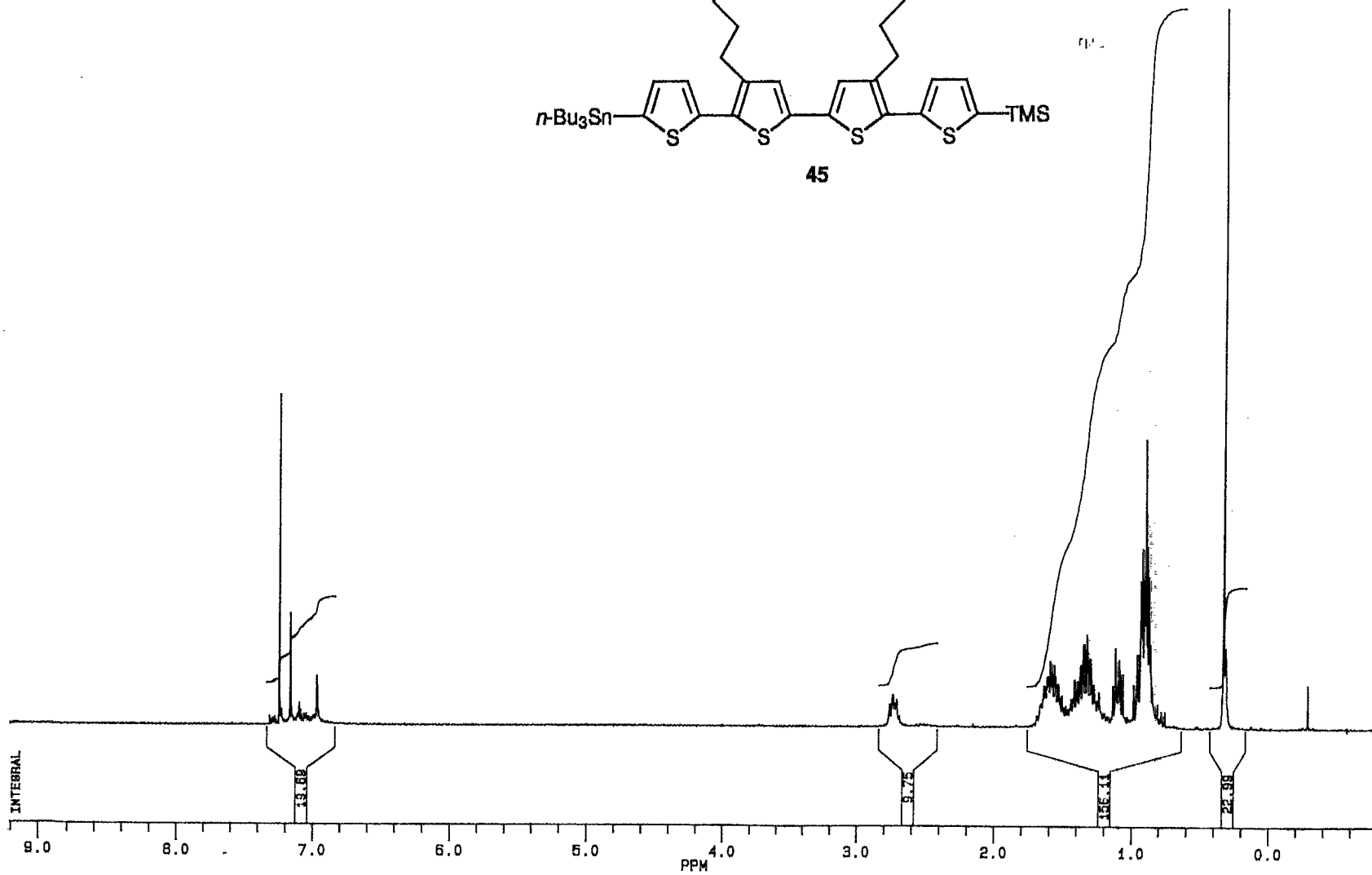
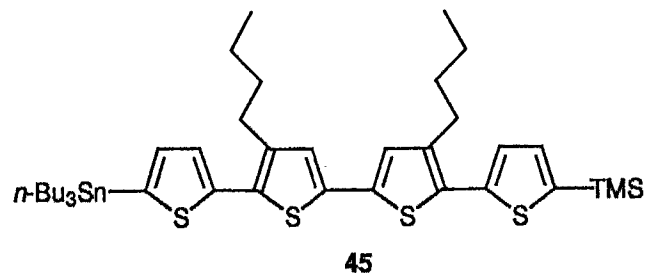
FW 7500
 O2 3200.000
 DP 53L F0

LB .080
 SB .500
 CX 35.00
 CY 18.00
 F1 9.200P
 F2 -1.800P
 HZ/CH 85.754
 PPM/CH .286
 SR 3373.00

D1 1.000000
 P0 5.00
 RBA
 RD 0.0
 PM 0.0
 DR 103.80
 NS 32
 DS 0
 DS 1.0010000
 W 1

44





~~BRUKER~~

EI060F.150
 AU PROG:
 X00.AU
 DATE 7-1-92
 TIME 2:43

SOLVENT CDC13
 SF 300.133
 SY 100.0
 Q1 4873.000
 SI 65536
 TD 32768
 SM 6024.088
 HZ/PT .184

AQ 2.720
 RG 64
 NS 32
 TE 297

FW 7600
 Q2 3200.000
 DP 63L P0

LB .090
 SB .500
 CX 35.00
 CY 18.00
 F1 9.200P
 F2 -.800P
 HZ/CM 85.754
 PPM/CM .288
 SR 3373.00

D1 1.000000
 P0 5.00
 RGA
 RD 0.0
 PW 0.0
 DE 103.80
 NS 32
 DS 0
 D5 .0010000
 NE 1



EI020F.135
 AU PROG:
 X00.AU
 DATE 1-1-92
 TIME 22:02

SOLVENT C606
 SF 300.133
 SY 100.0
 O1 4883.500
 SI 65538
 TD 32768
 SW 6024.096
 HZ/PT .184

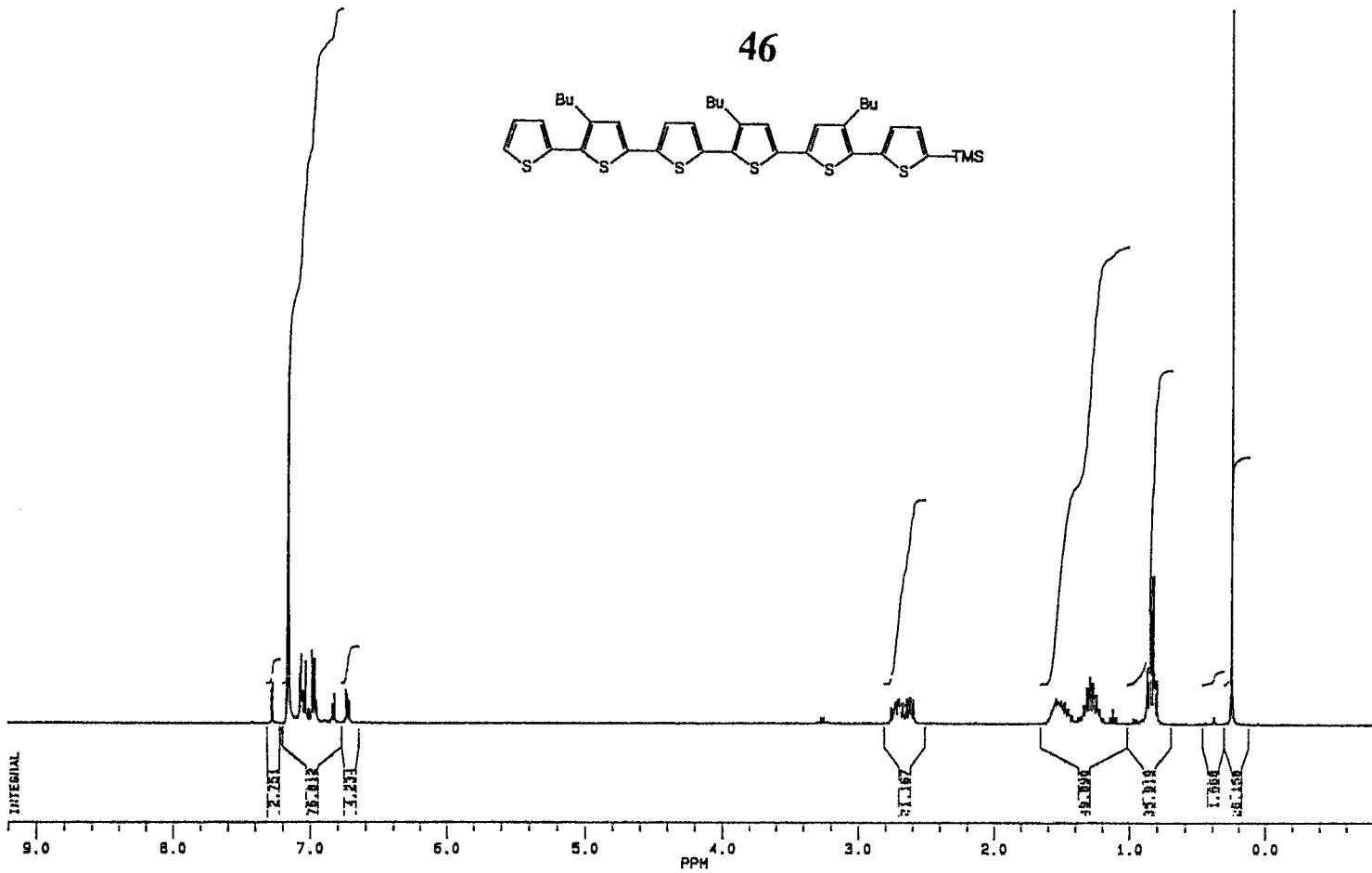
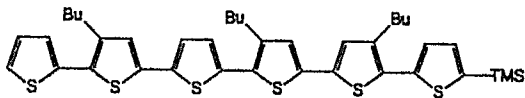
AQ 2.720
 RG 84
 NS 32
 TE 297

FW 7500
 Q2 3200.000
 DP 63L P0

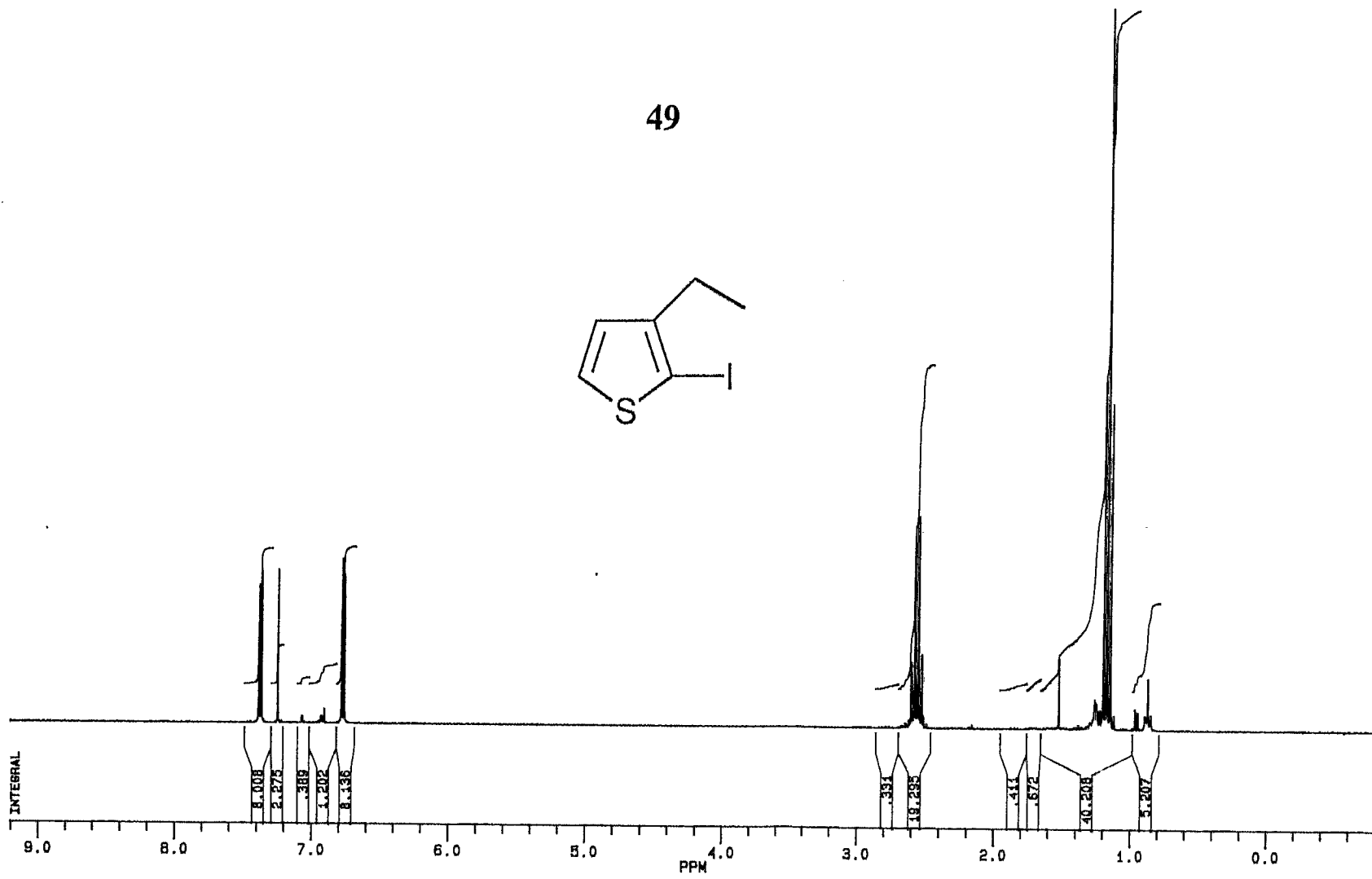
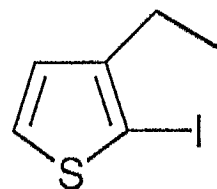
LS .090
 SB .500
 CX 35.00
 CY 18.00
 F1 9.200P
 F2 -1.799P
 HZ/CM 85.749
 PPH/CM .288
 SR 3382.81

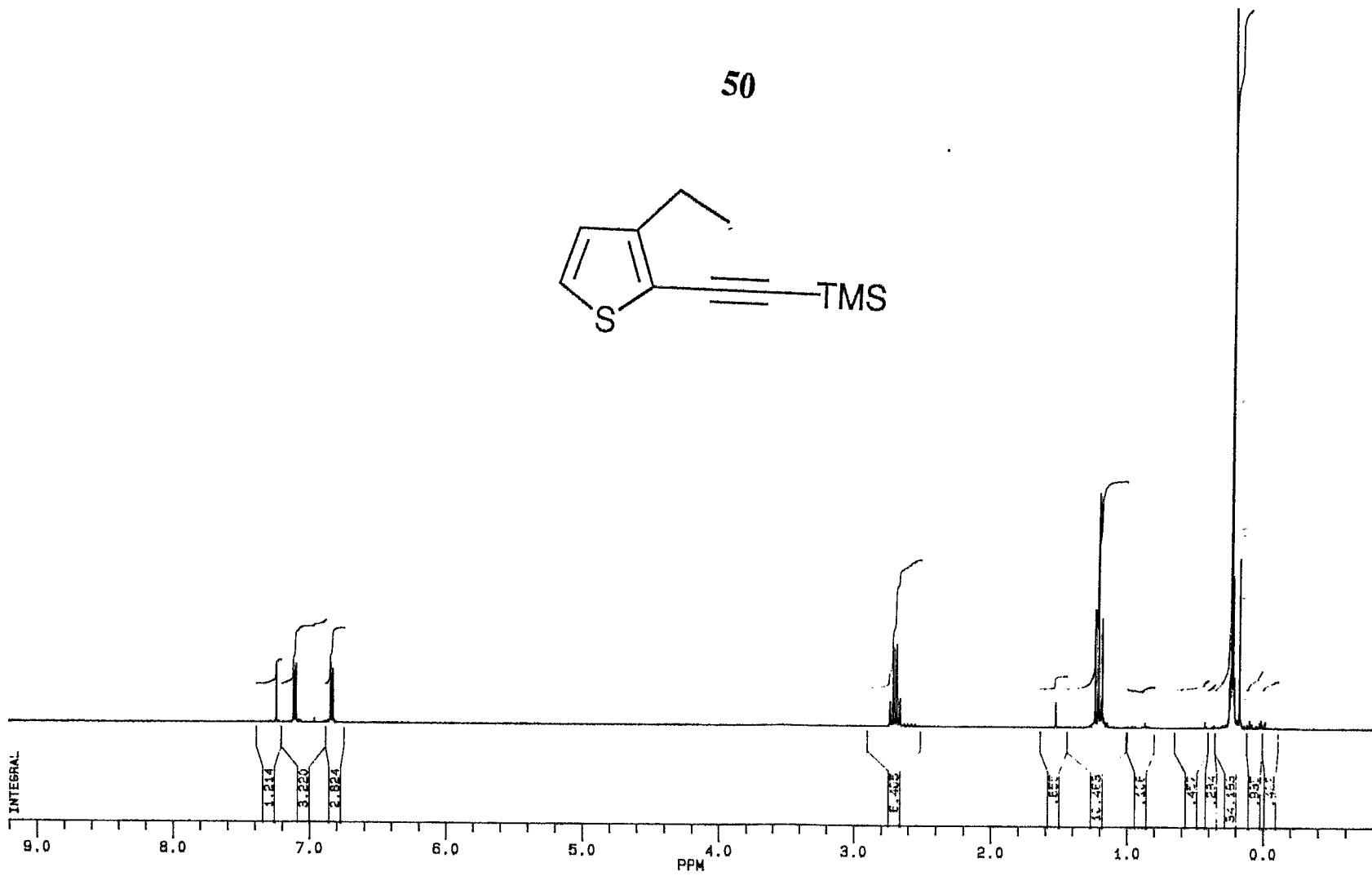
D1 1.000000
 P0 5.00
 R0A
 RD 0.0
 RW 0.0
 DR 103.80
 MS 32
 DS 0
 OS .0010000
 ME 1

46

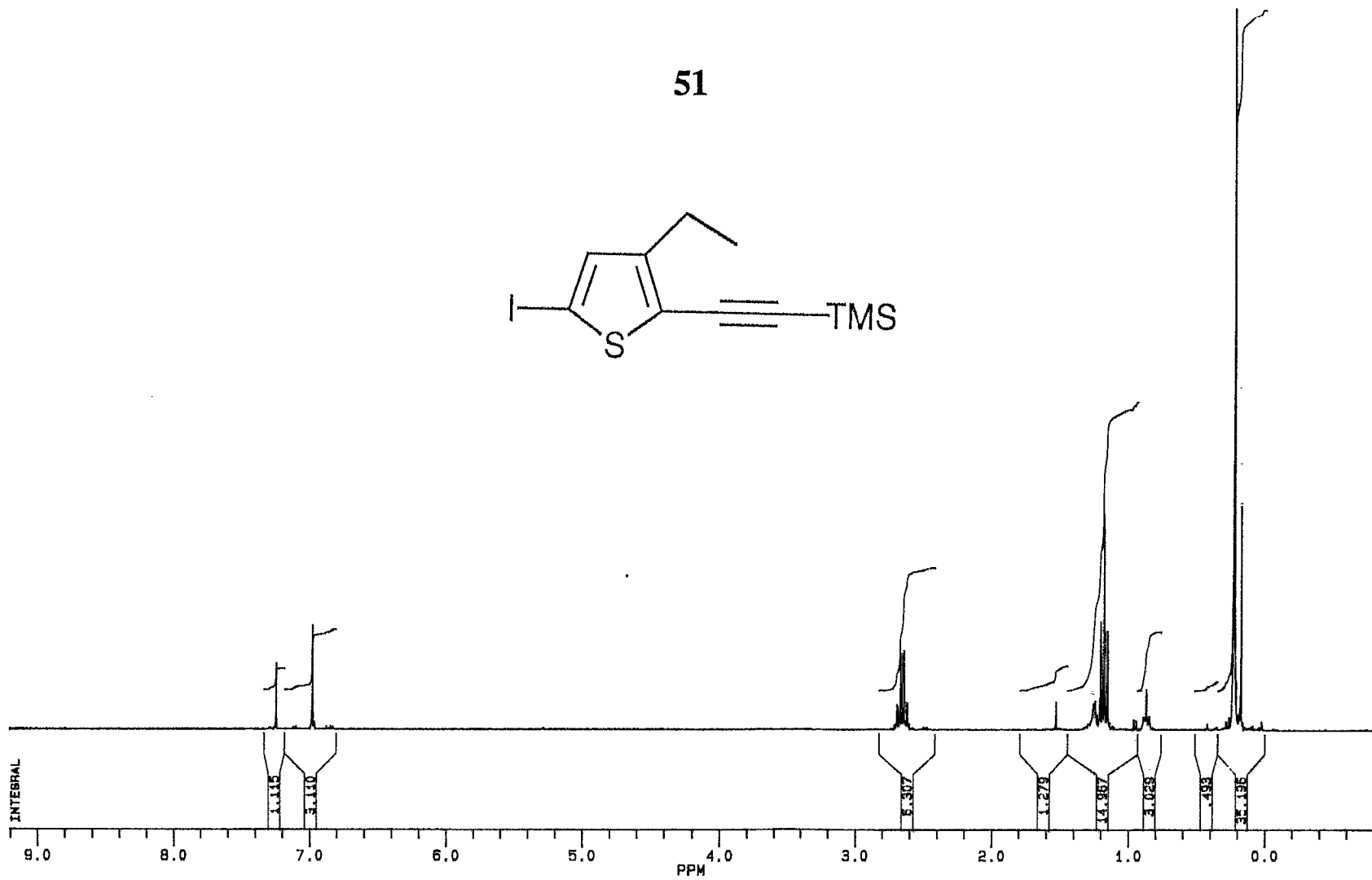
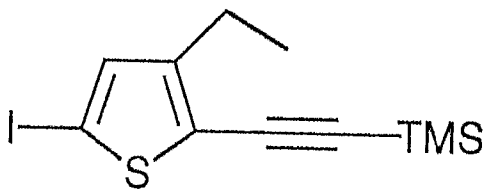


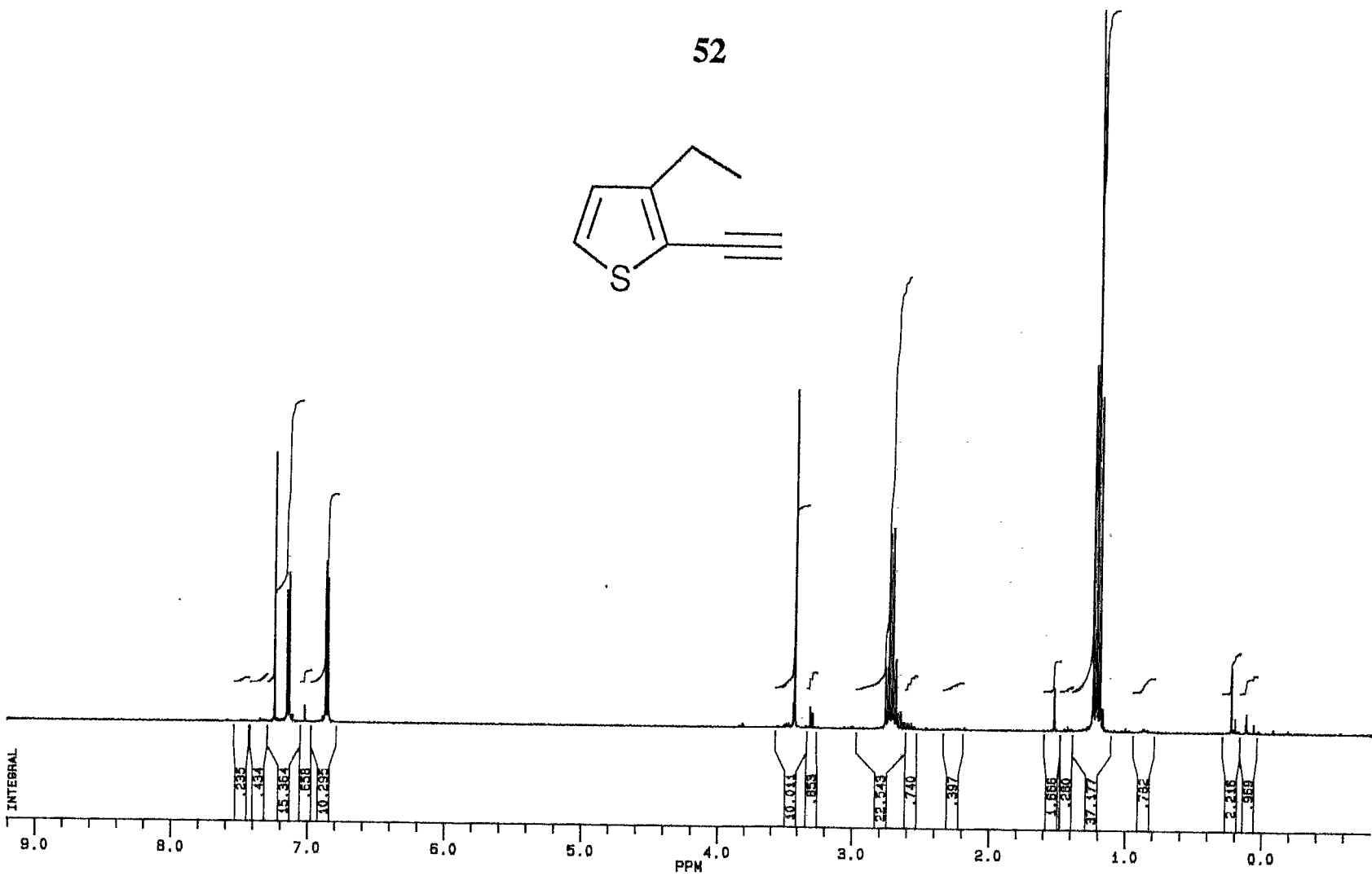
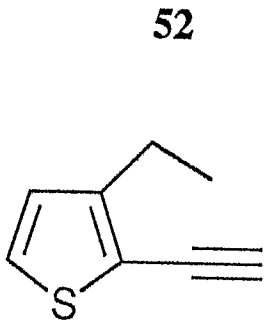
49

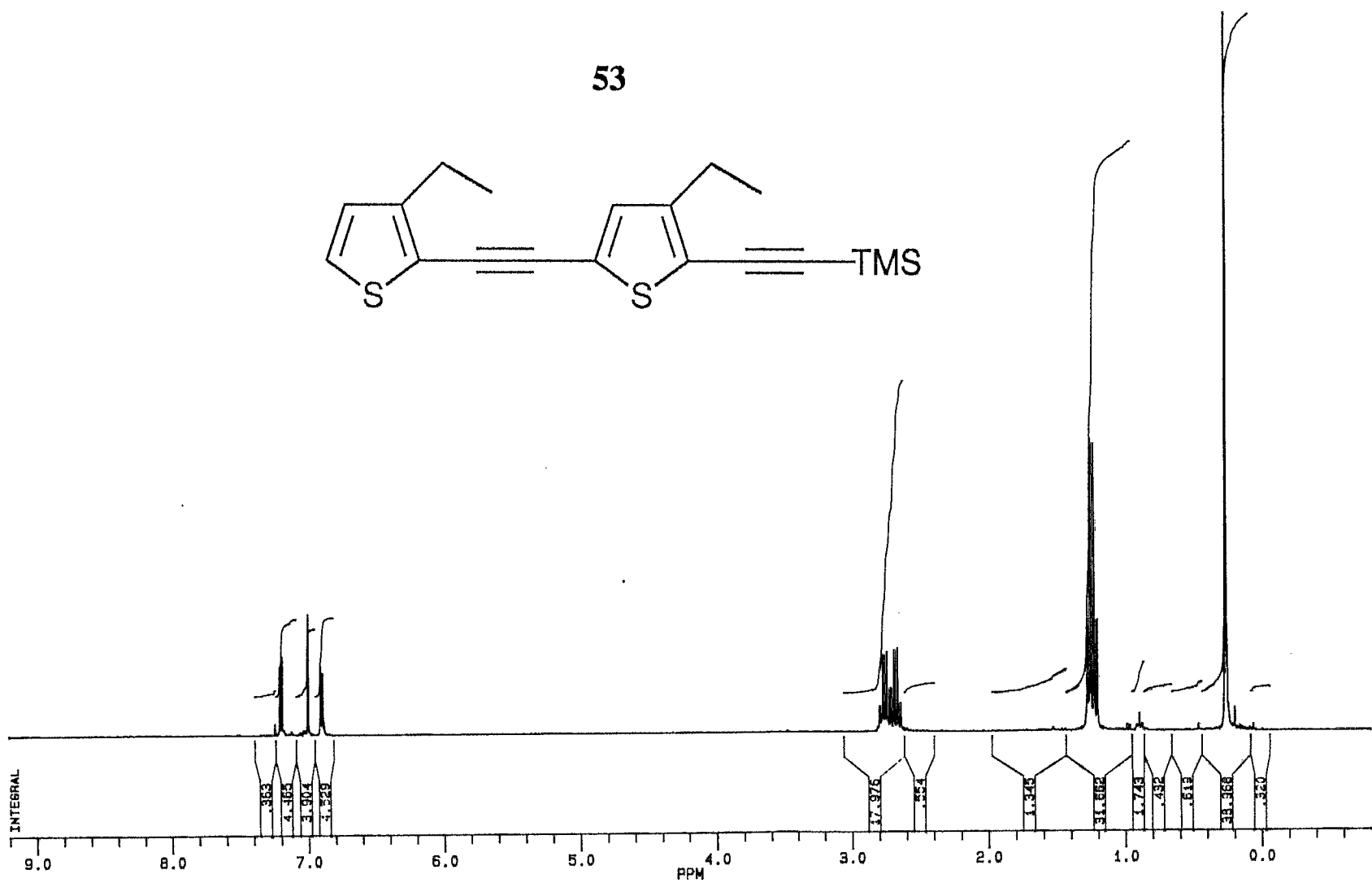


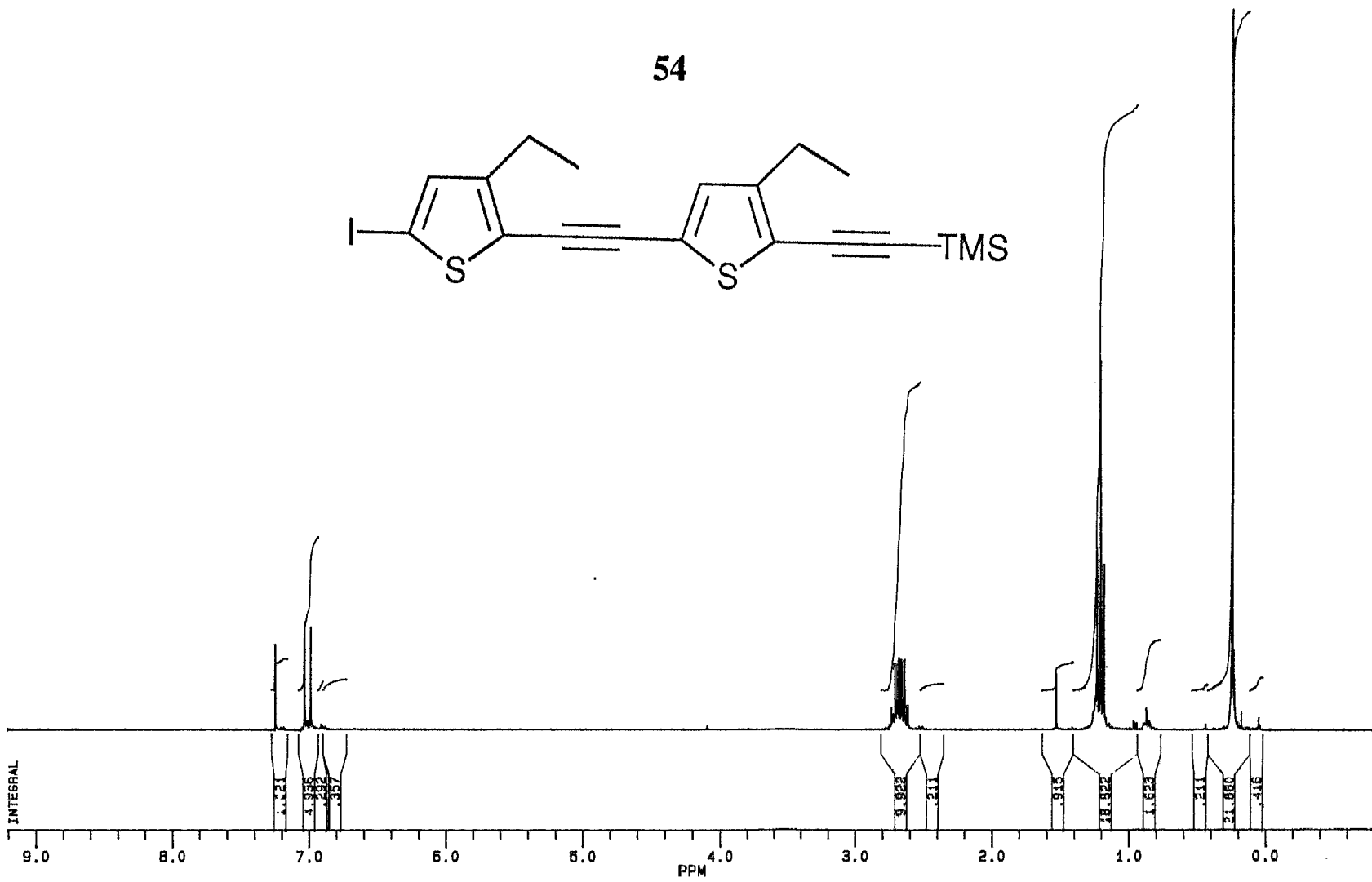


51

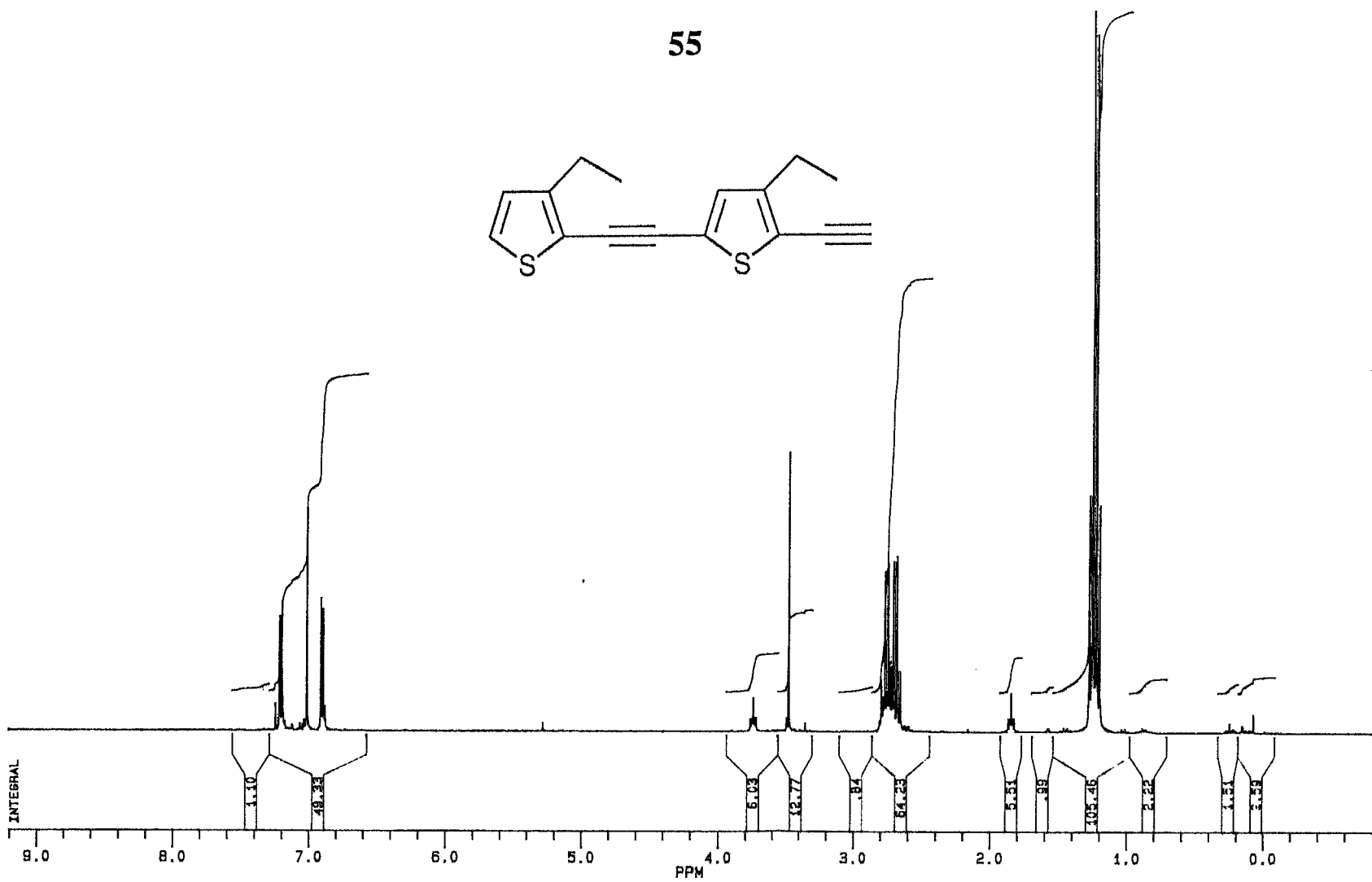


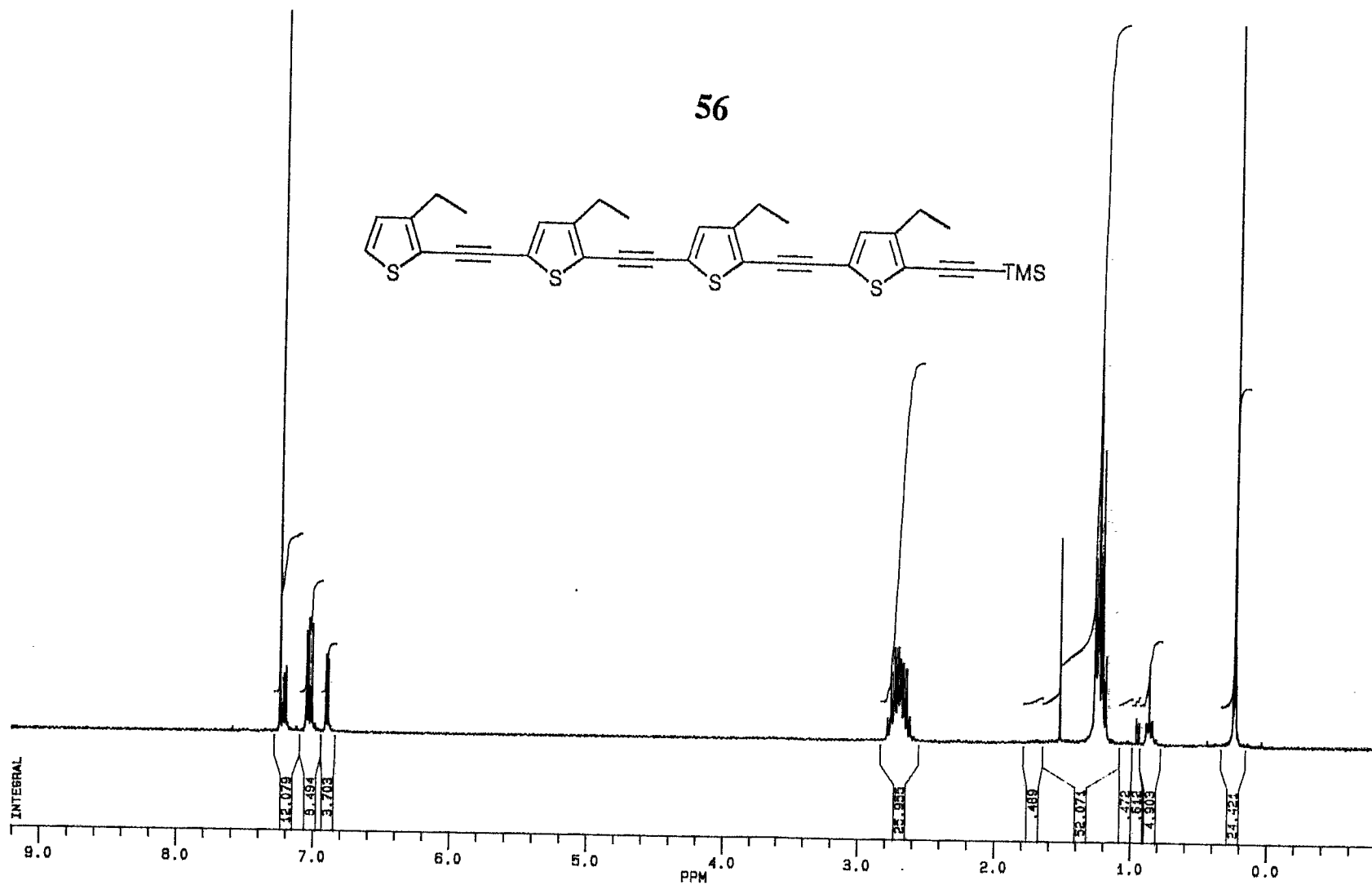


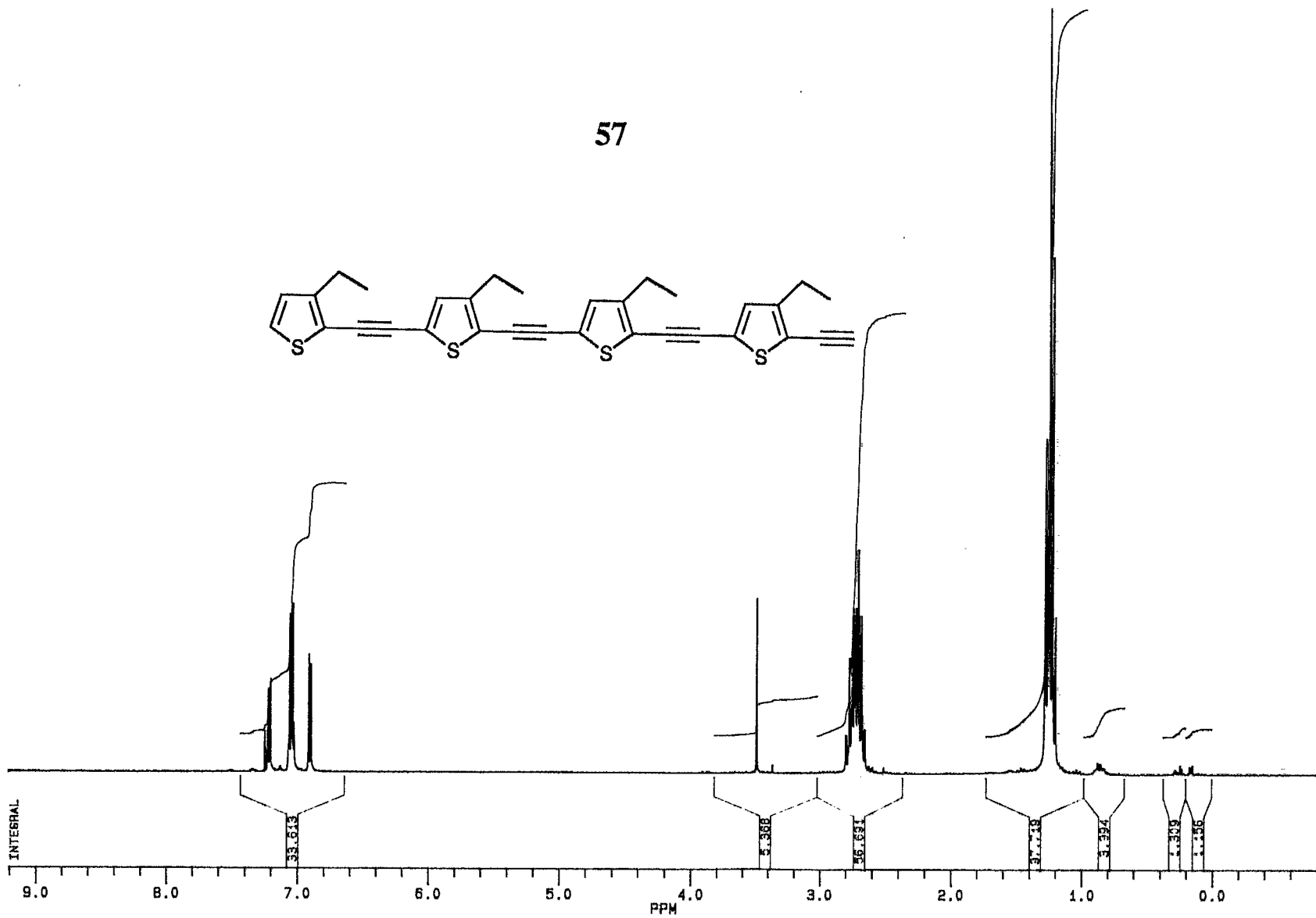




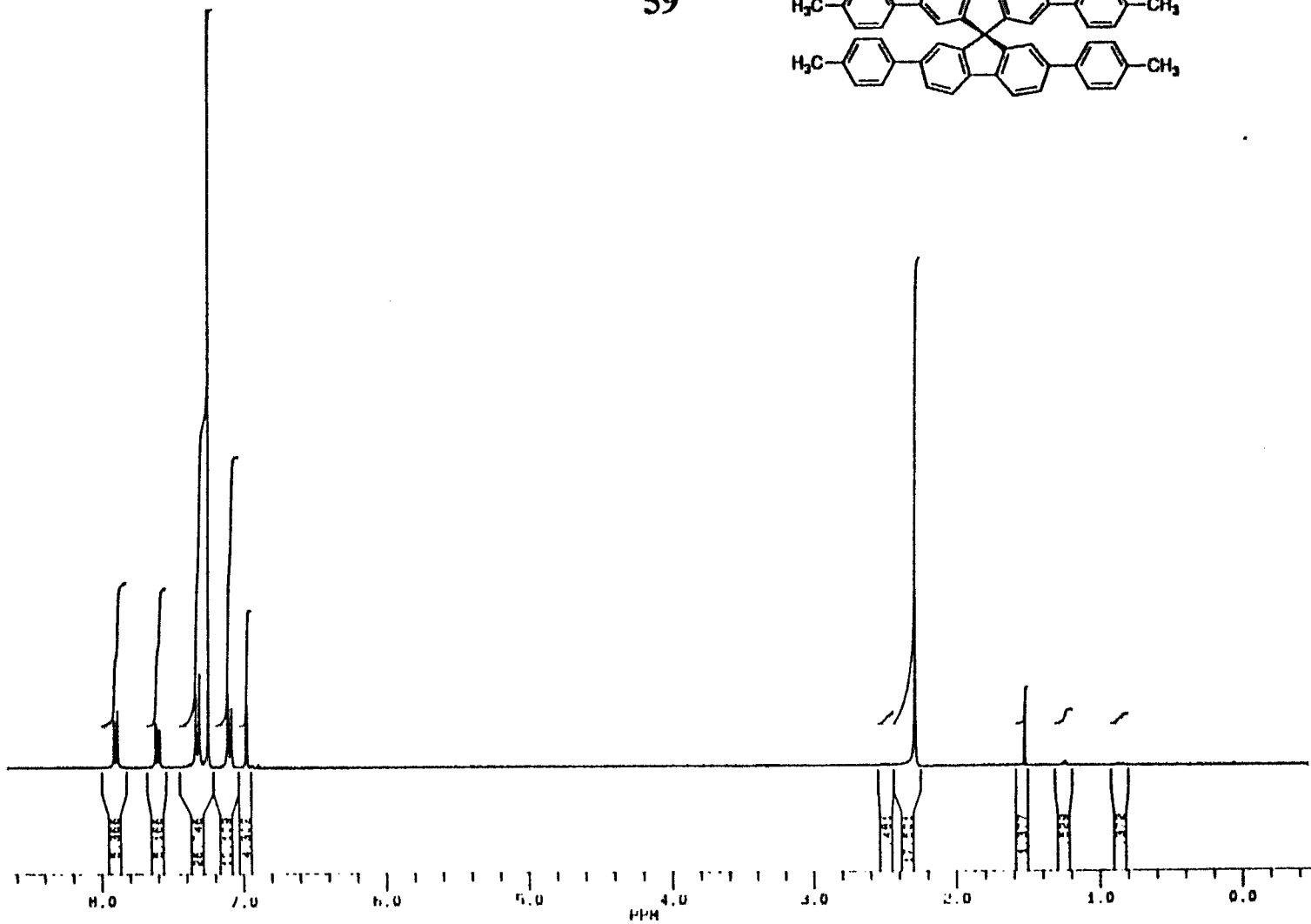
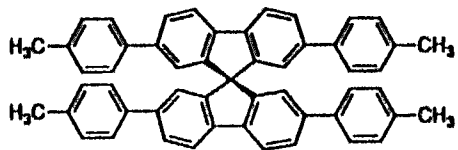
24







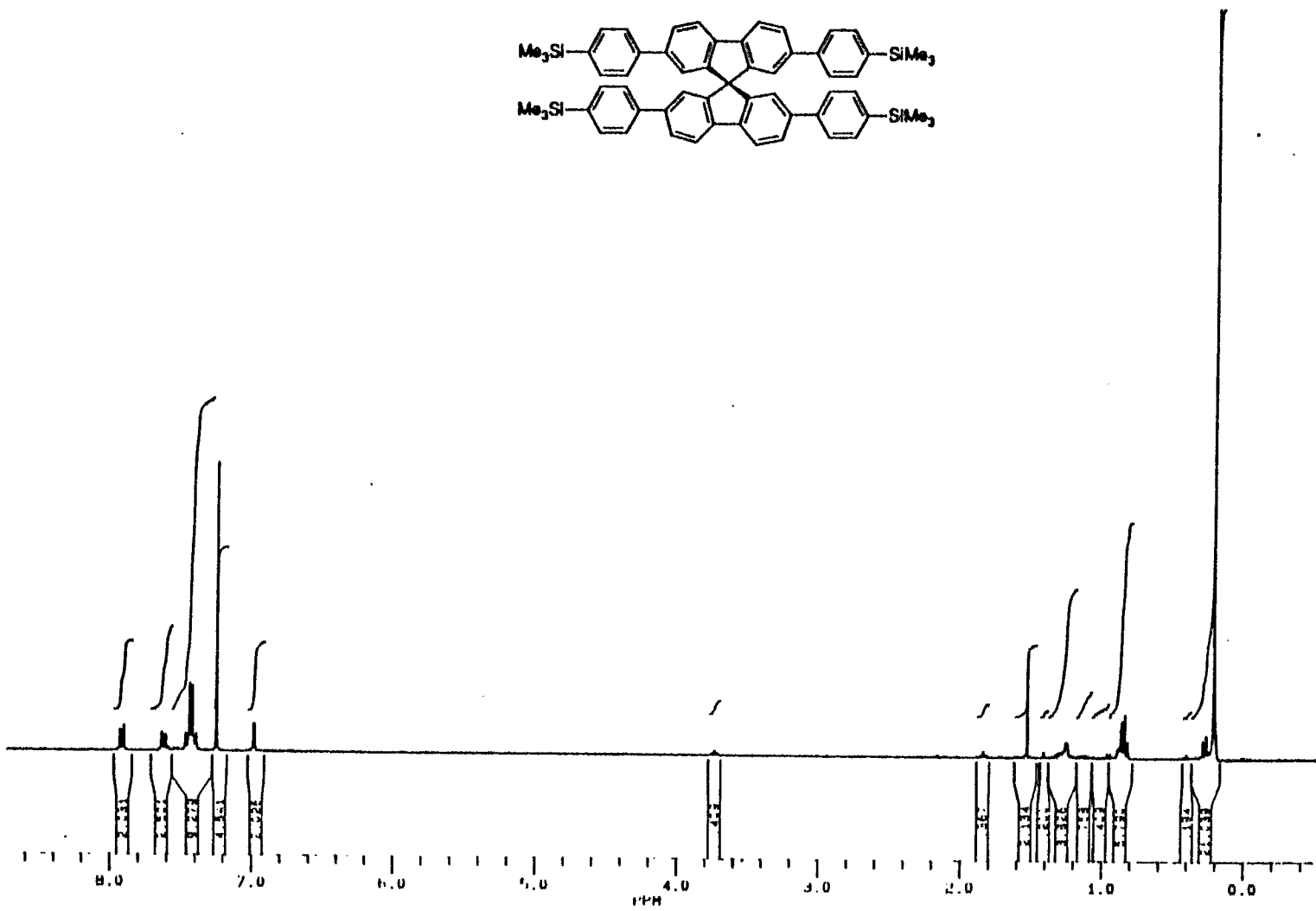
71



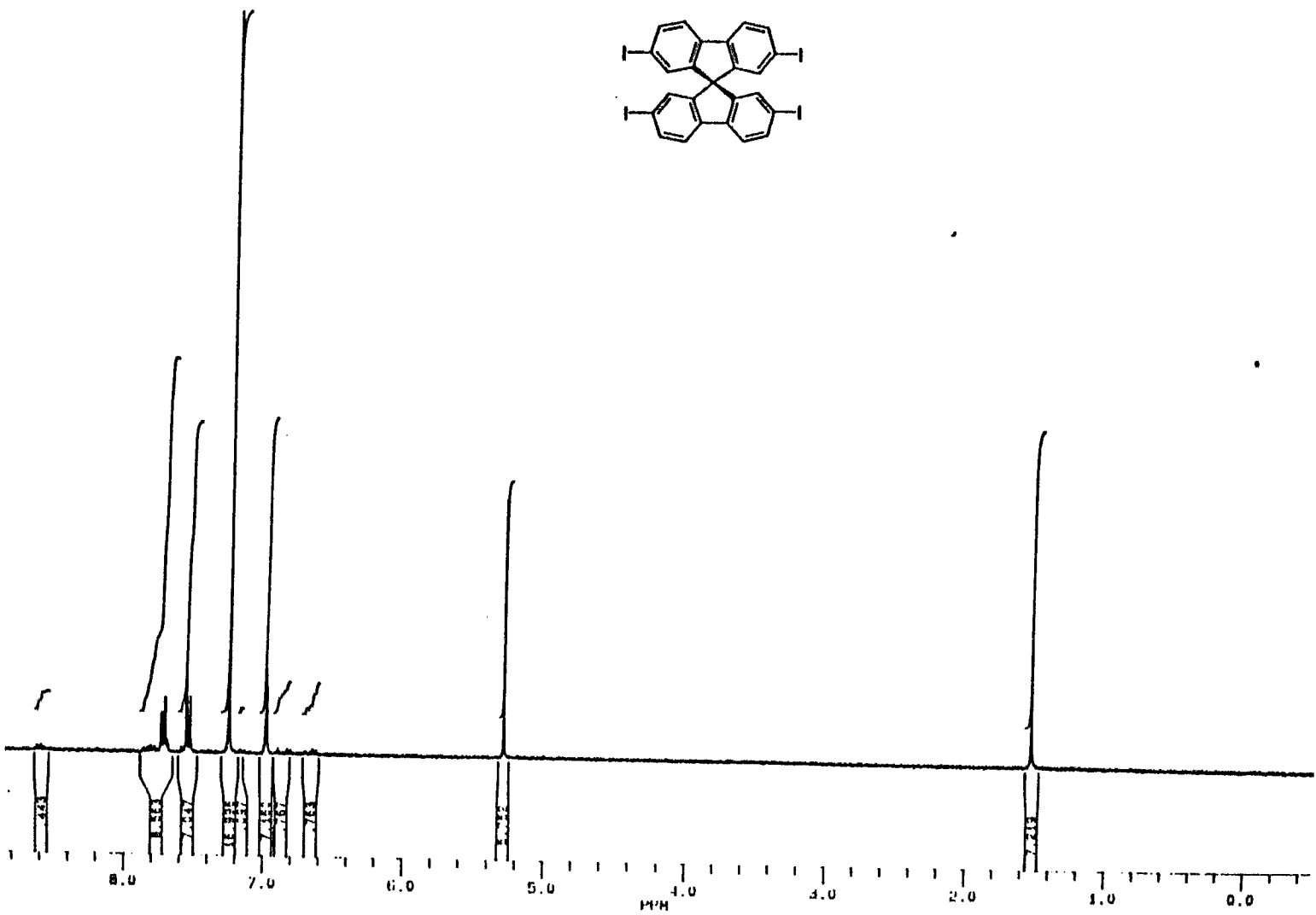
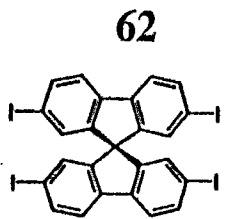
247

27

60



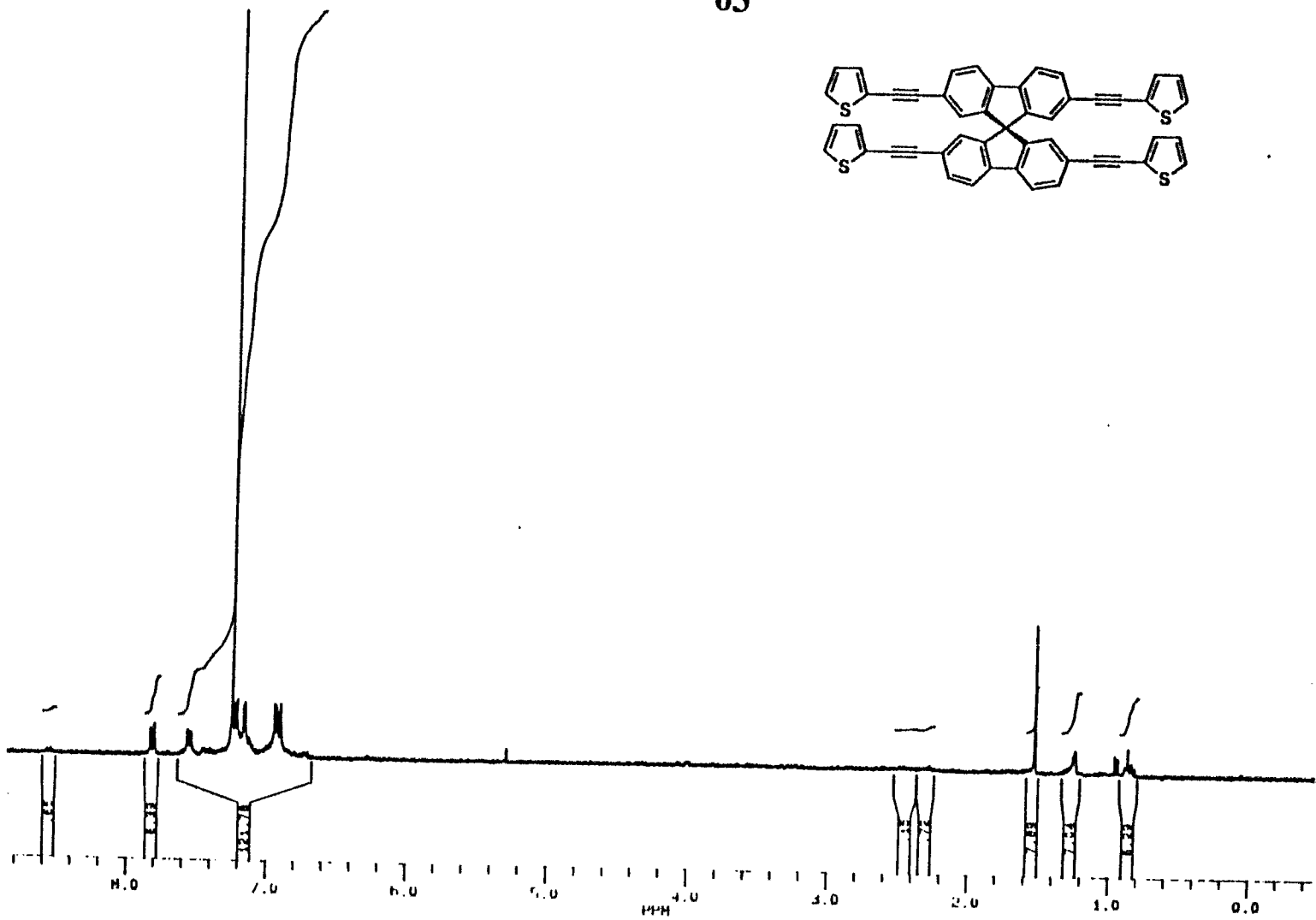
243



254



63



258