

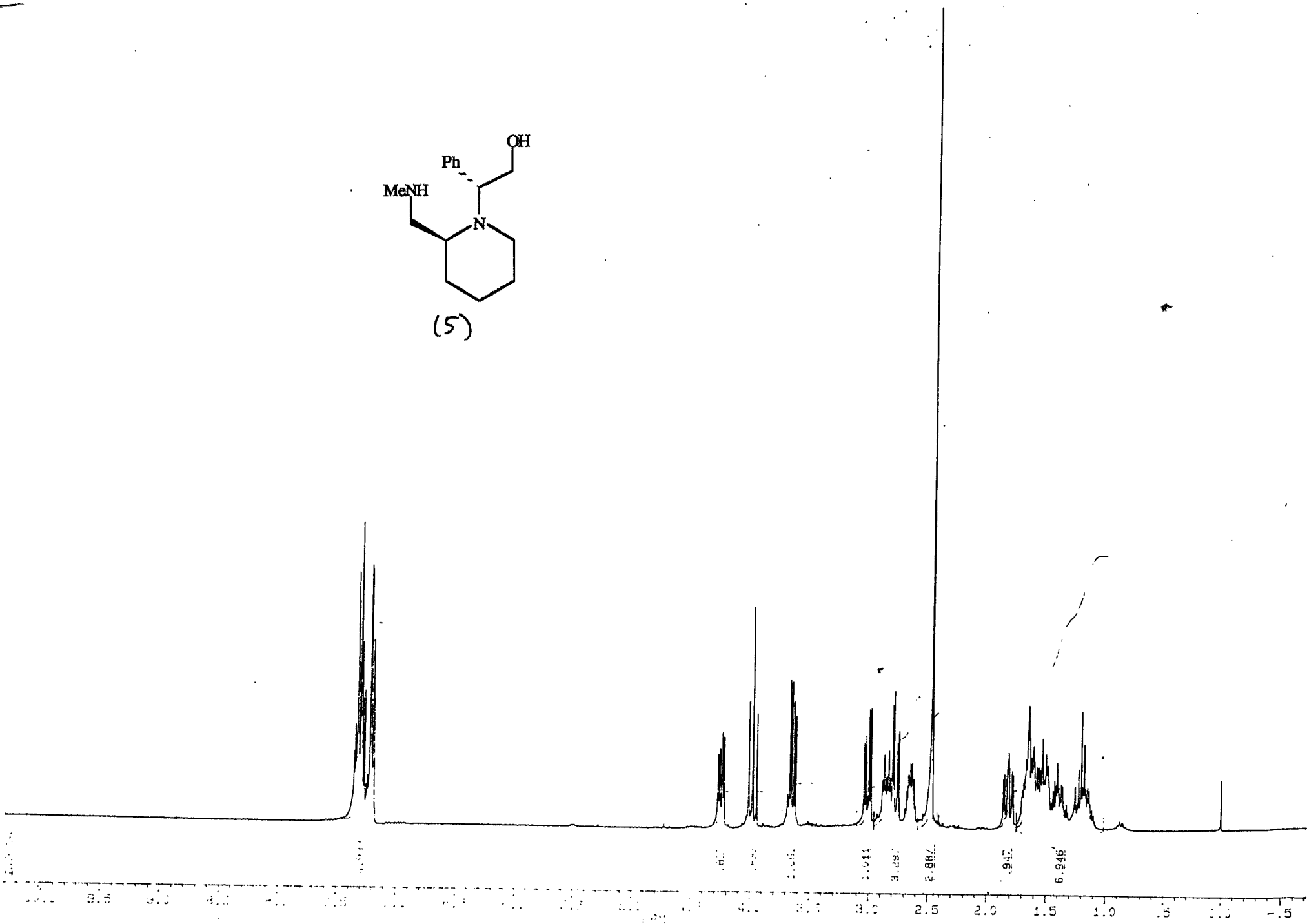
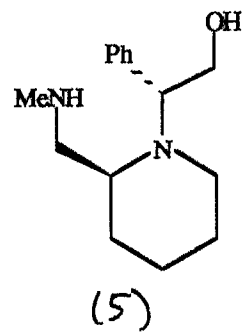
#### Terms & Conditions

Electronic Supporting Information files are available without a subscription to ACS Web Editions. The American Chemical Society holds a copyright ownership interest in any copyrightable Supporting Information. Files available from the ACS website may be downloaded for personal use only. Users are not otherwise permitted to reproduce, republish, redistribute, or sell any Supporting Information from the ACS website, either in whole or in part, in either machine-readable form or any other form without permission from the American Chemical Society. For permission to reproduce, republish and redistribute this material, requesters must process their own requests via the RightsLink permission system. Information about how to use the RightsLink permission system can be found at <http://pubs.acs.org/page/copyright/permissions.html>

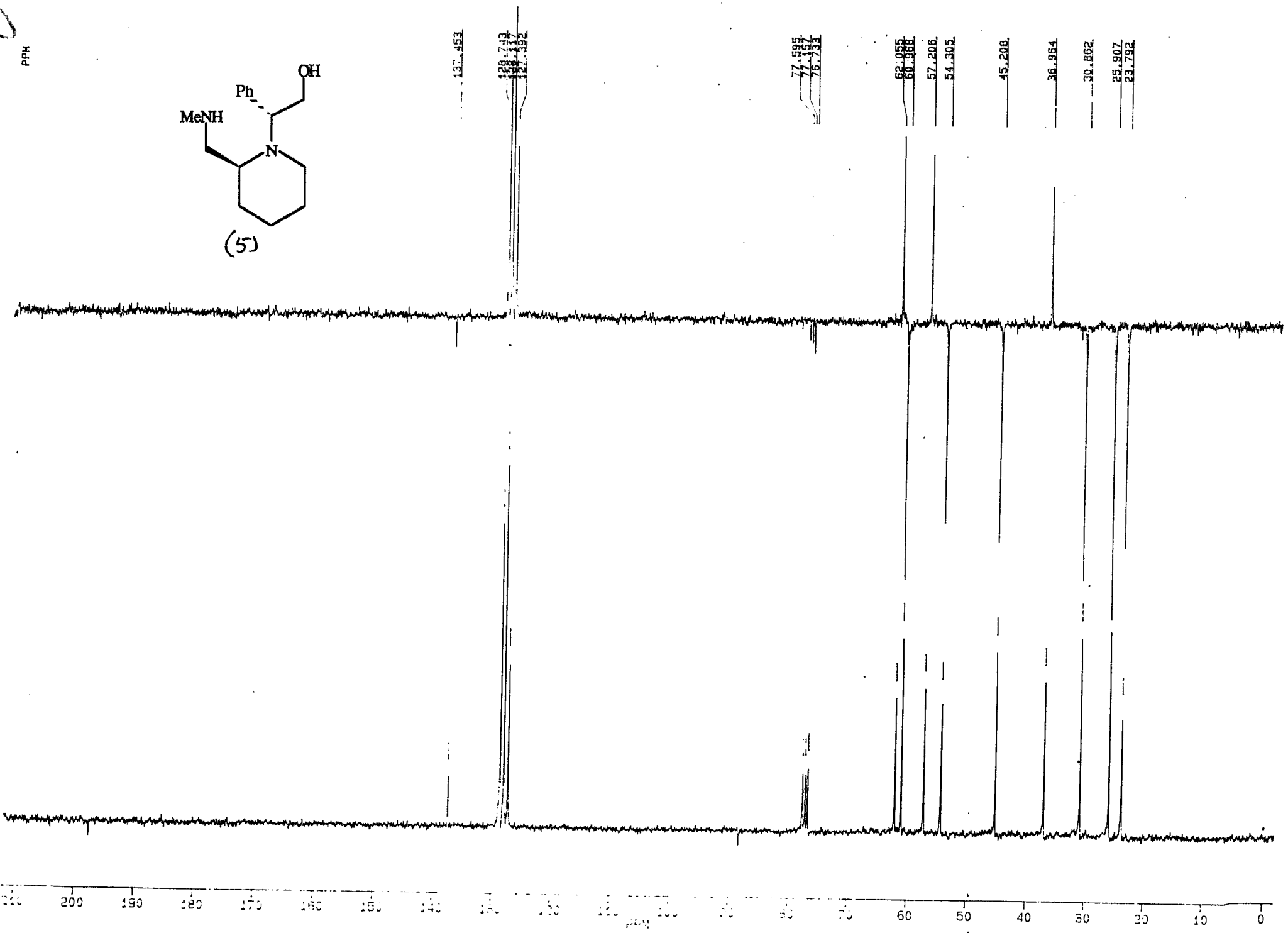
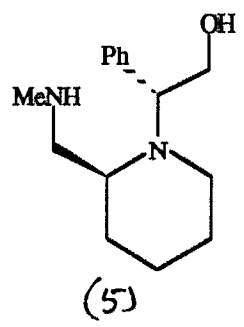


ACS Publications

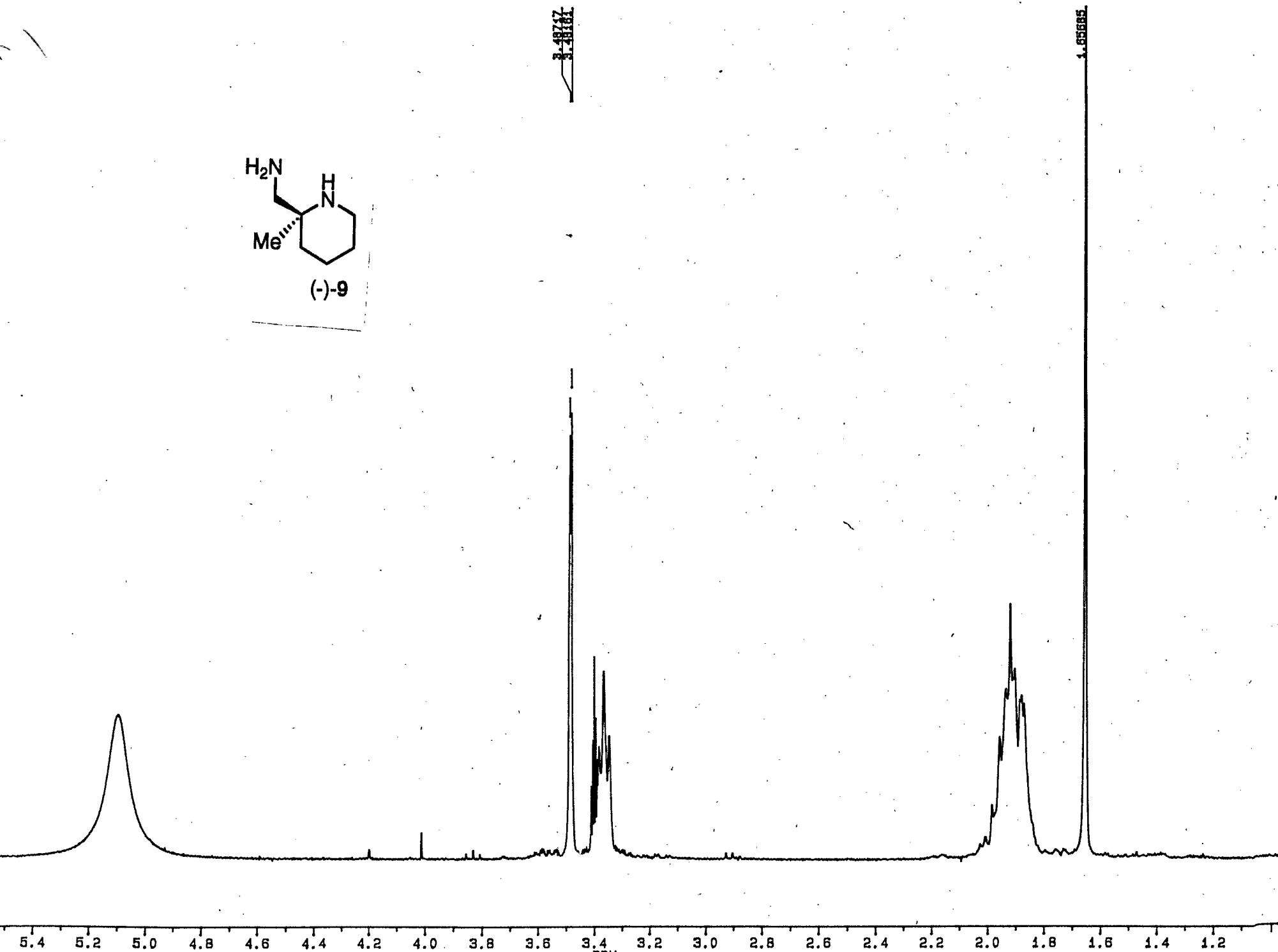
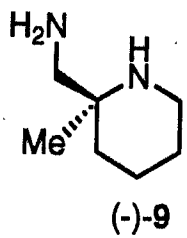
MOST TRUSTED. MOST CITED. MOST READ.

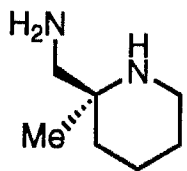


2  
PPM



220 200 190 180 170 160 150 140 130 120 110 100 90 80 70 60 50 40 30 20 10 0





(-)-9

57.0788

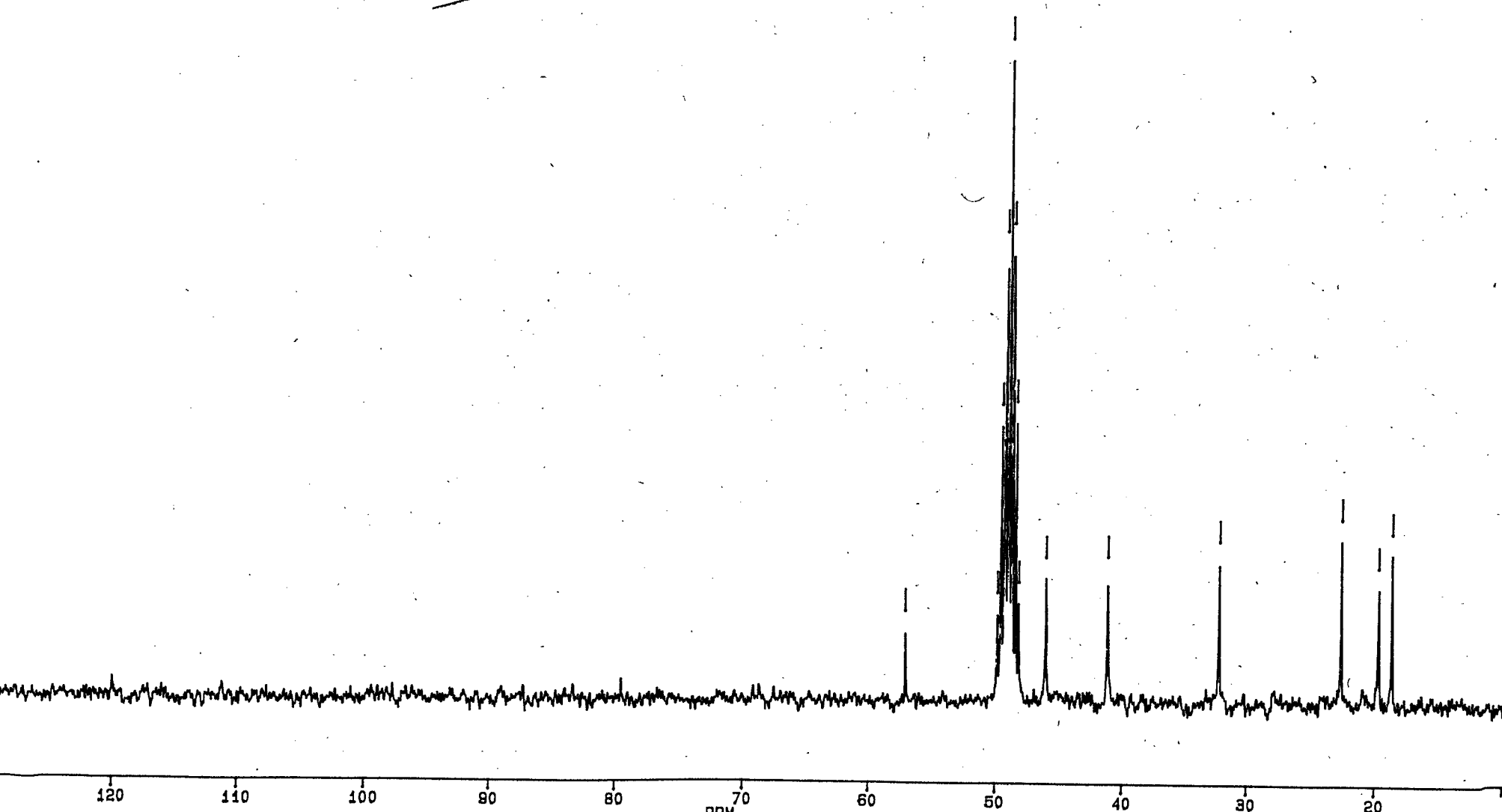
49.8404  
49.8777  
49.8786  
49.9004  
49.9147  
49.9150  
49.9257

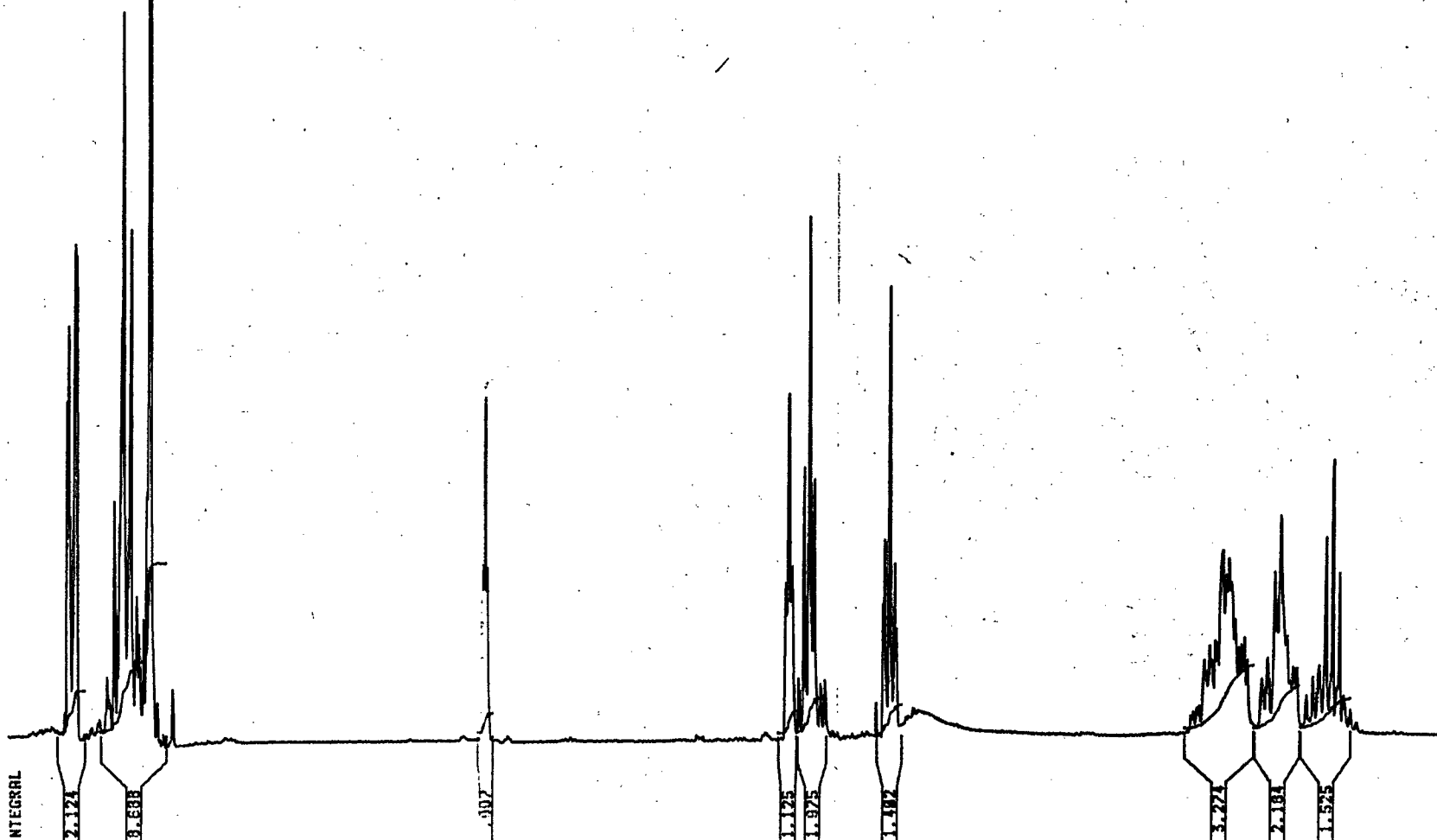
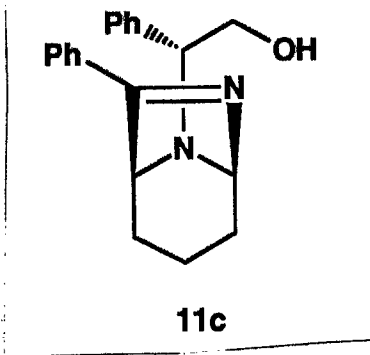
41.1580

32.2615

22.5950

19.8814  
18.6818





6  
PPM  
171.868

148.418

131.884  
130.885  
128.813  
128.739  
128.188  
127.917

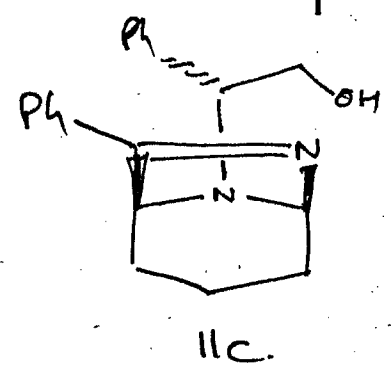
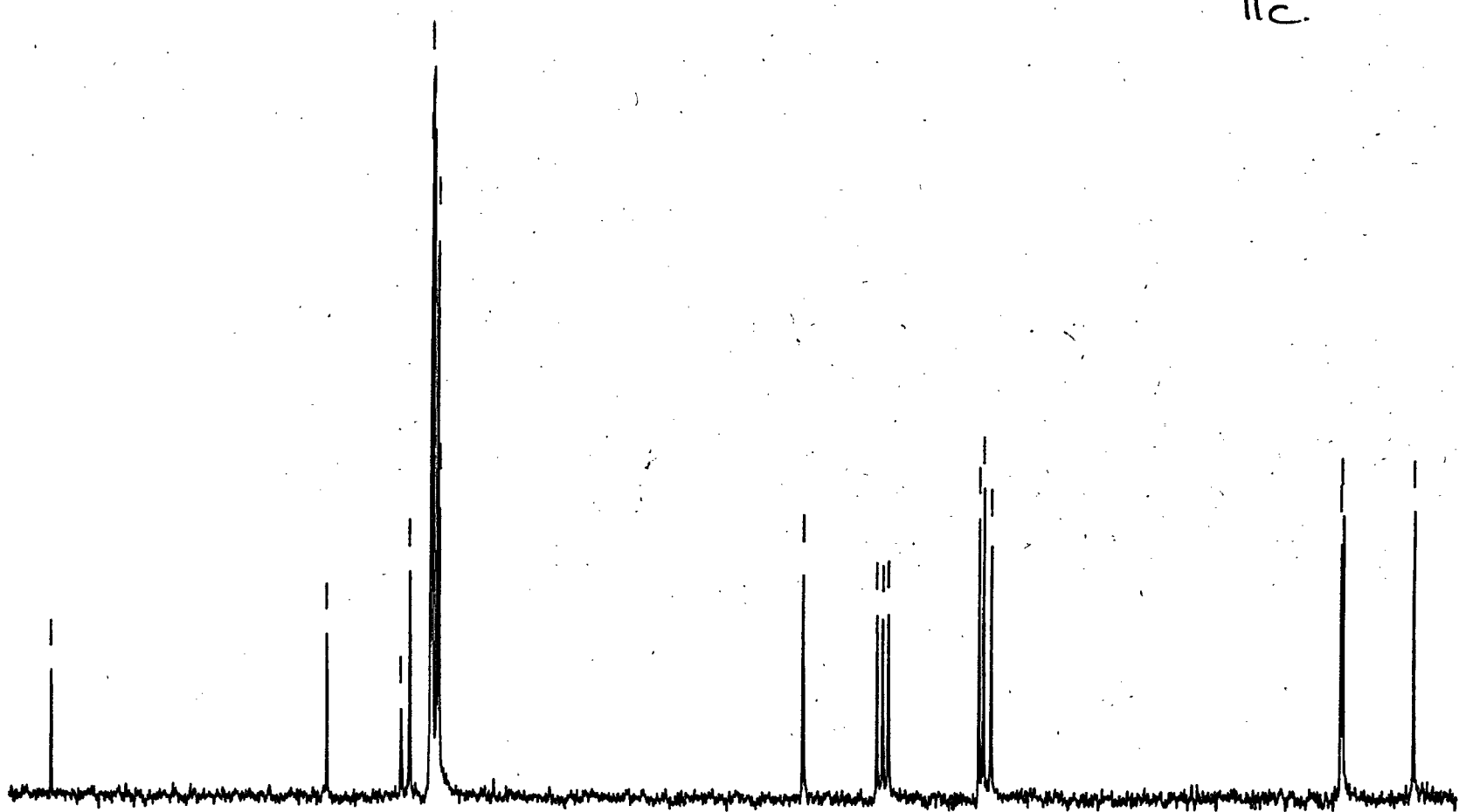
86.161

77.755  
77.271  
76.182

66.191  
65.674  
61.881

35.211  
34.876

18.888



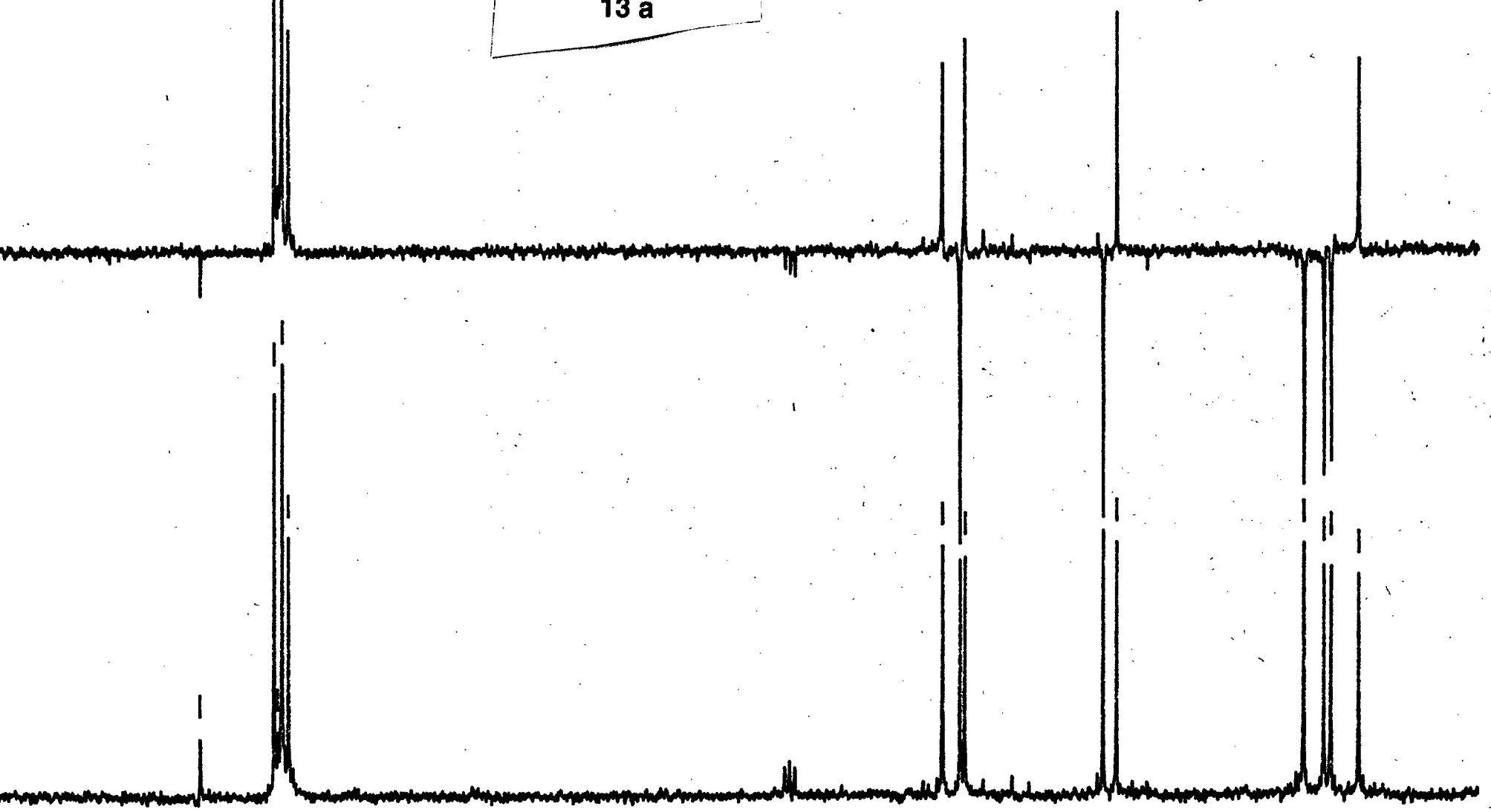
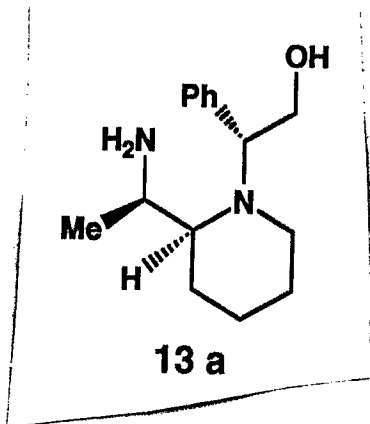
136.172

128.120  
127.120  
126.120

61.976  
58.976  
55.976

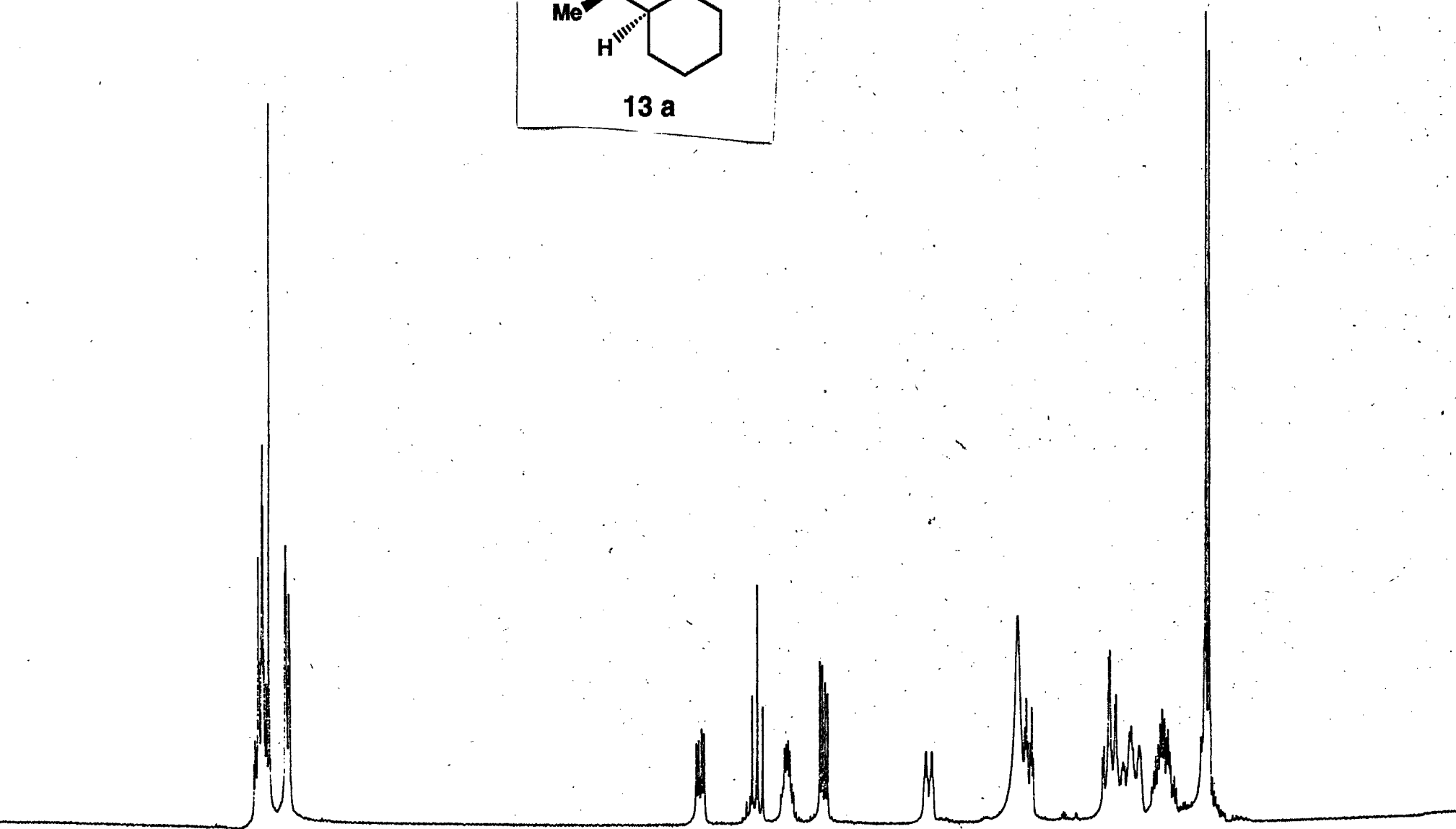
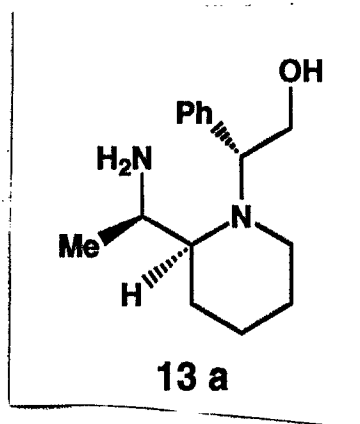
45.988  
44.572

26.814  
24.992  
21.984  
20.484



150 140 130 120 110 100 90 80 70 60 50 40 30 20 10





9.0 8.5 8.0 7.5 7.0 6.5 6.0 5.5 5.0 4.5 4.0 3.5 3.0 2.5 2.0 1.5 1.0 .5 0.0

PPM  
150.530

128.943  
128.942  
128.941  
128.940

77.877  
77.210  
76.644

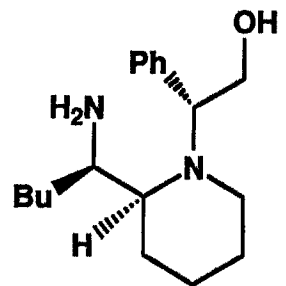
66.934  
66.494  
66.310

48.542  
48.218

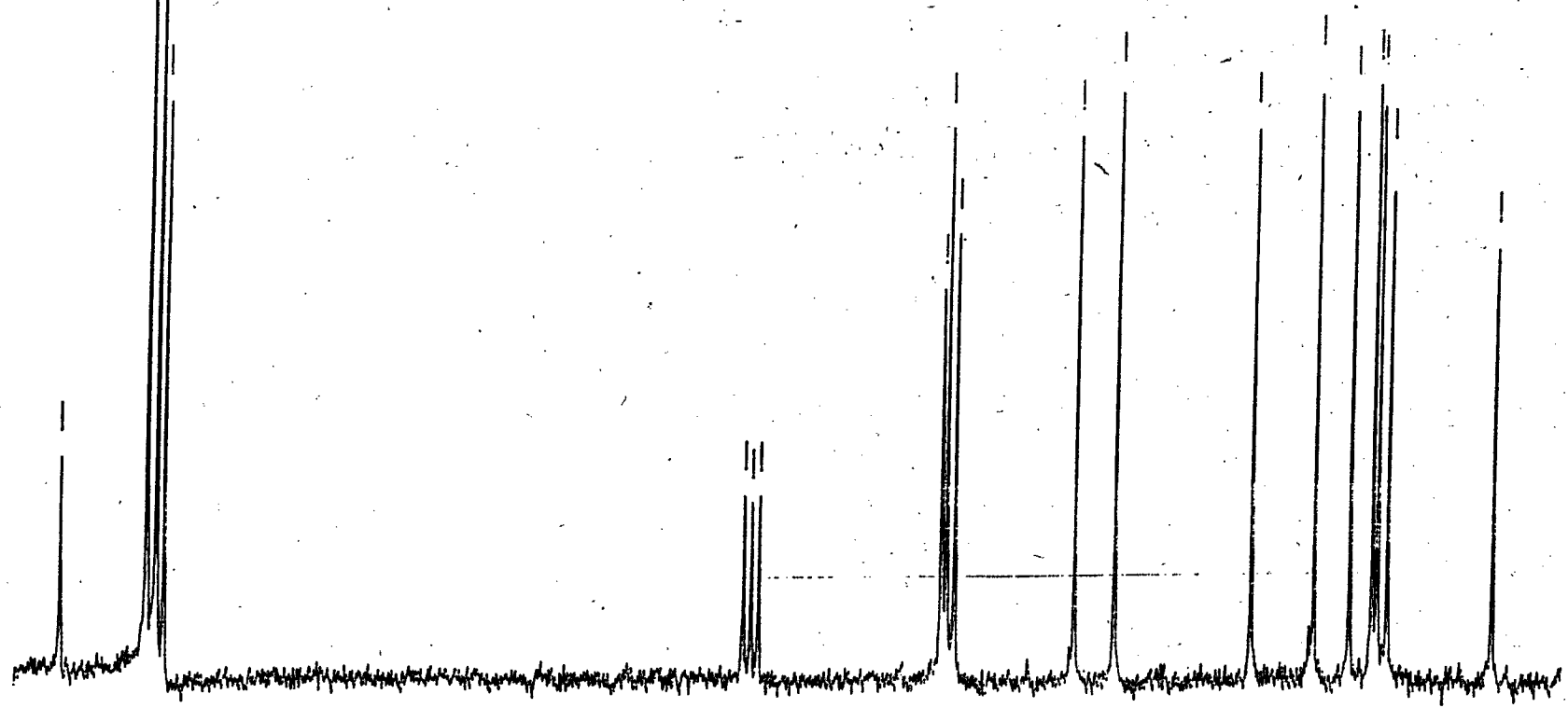
34.213

28.258  
28.187  
21.853  
21.748  
22.358

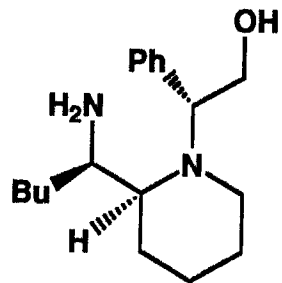
14.843



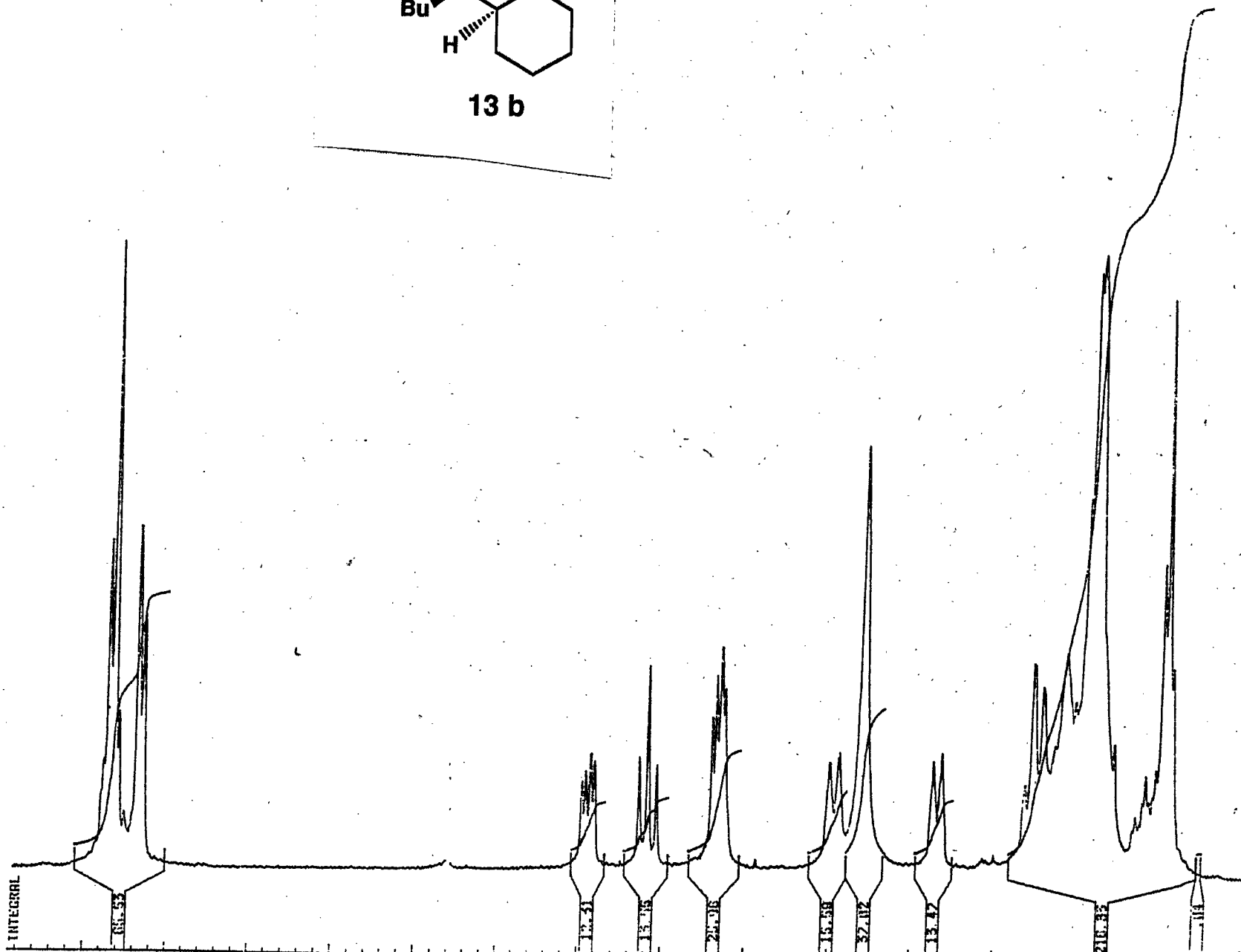
13 b



10



13 b



PPH

138.475  
129.384  
128.711  
128.564  
128.389  
125.888  
125.592  
121.388

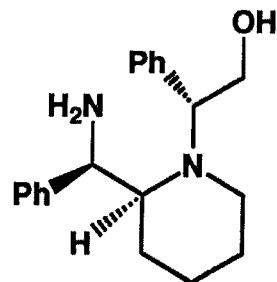
77.775  
77.143  
76.513

67.431  
66.798  
66.166

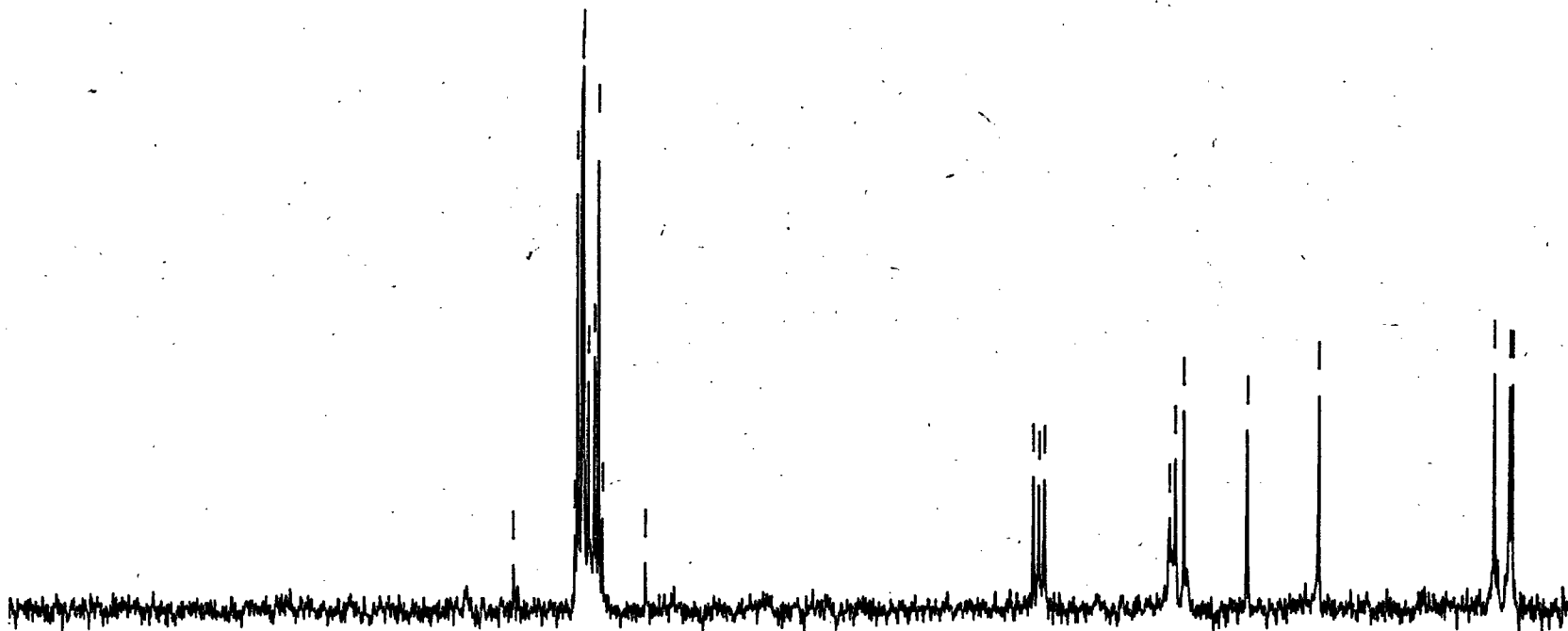
53.282

45.282

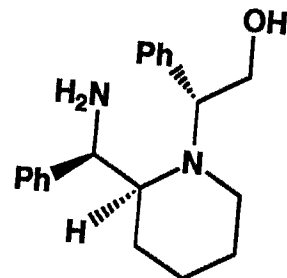
25.655  
24.915  
24.274



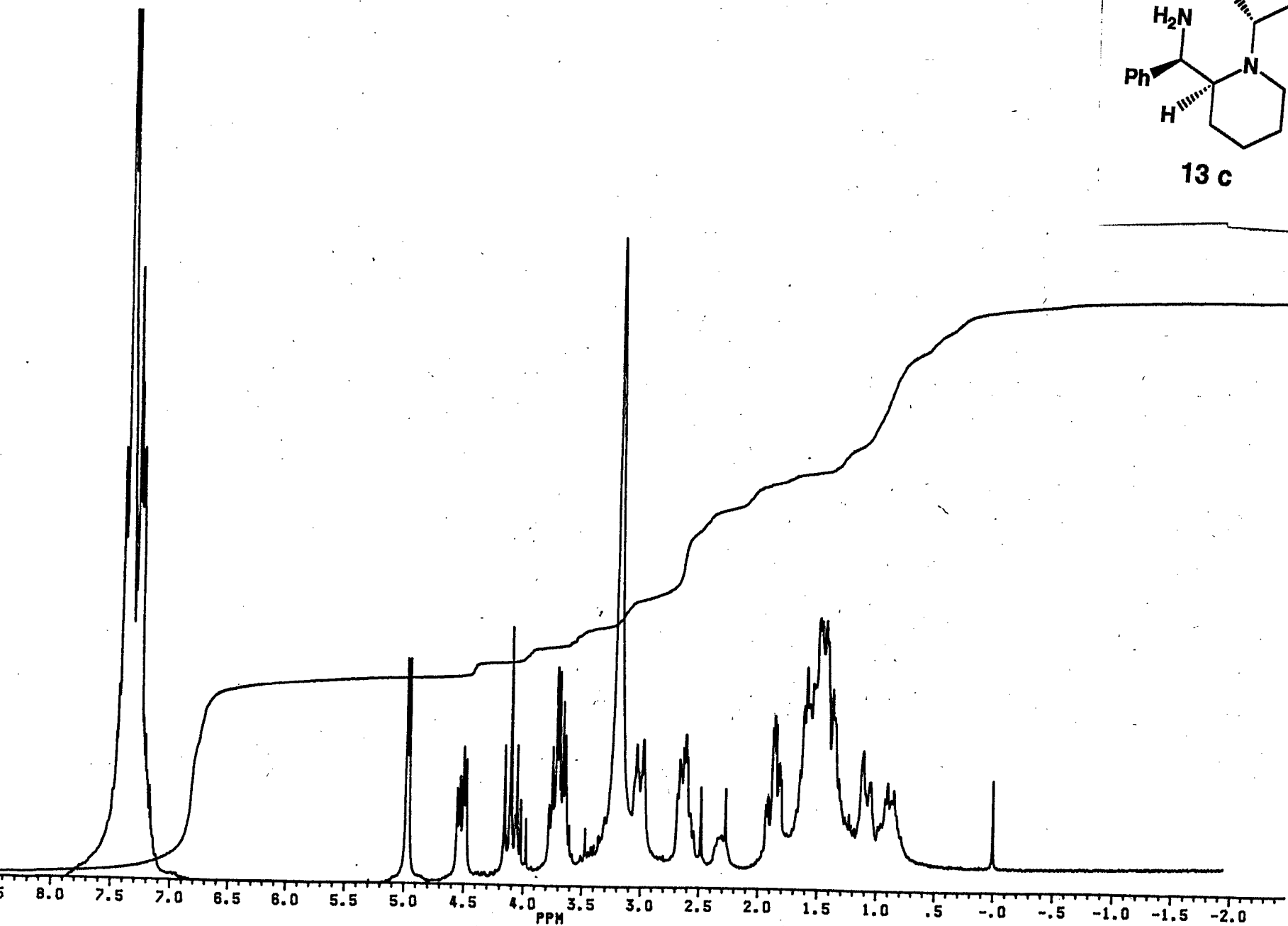
13 c

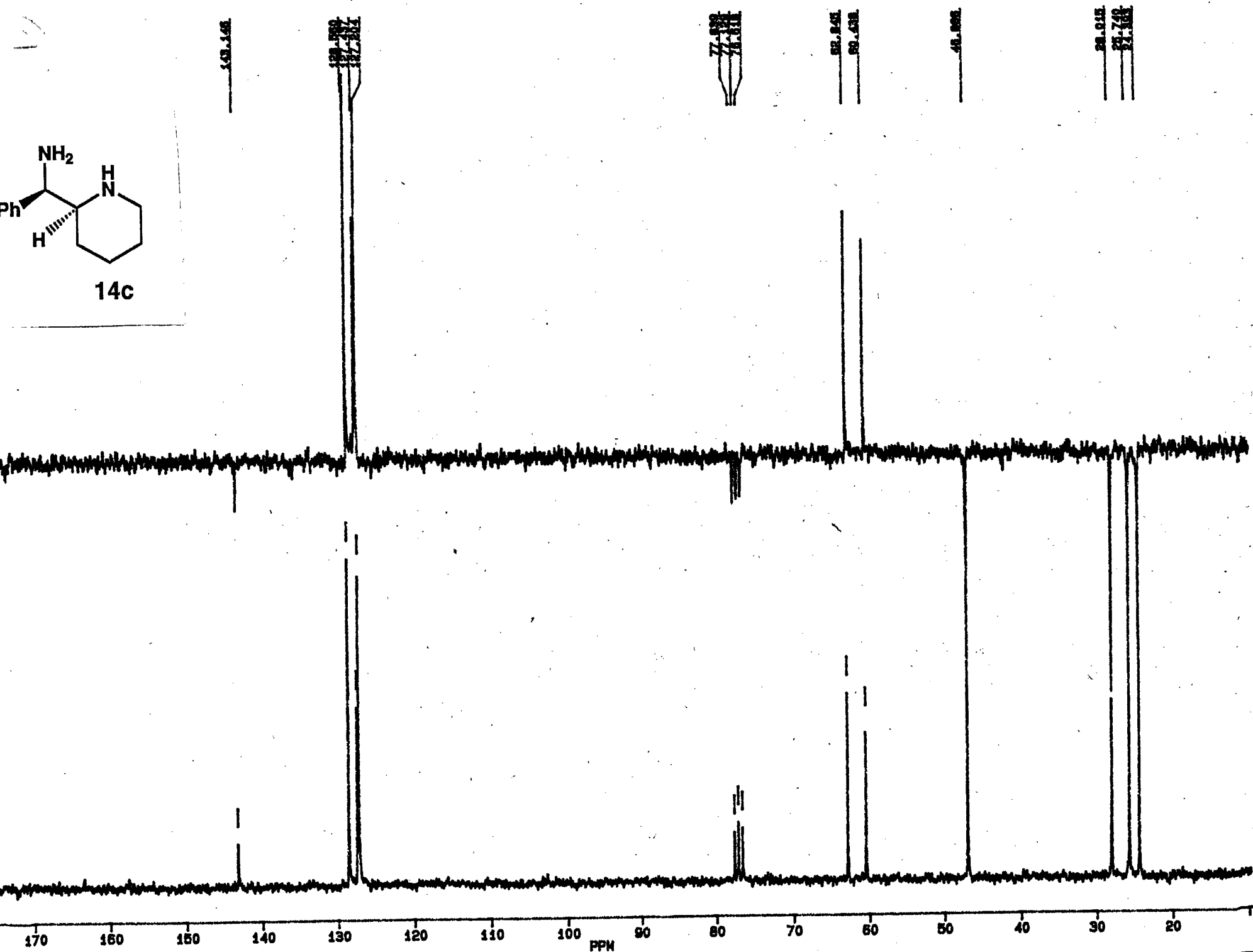
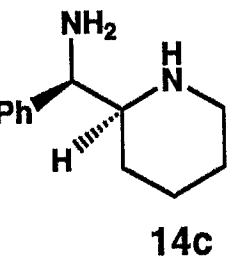


12

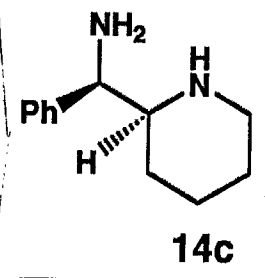
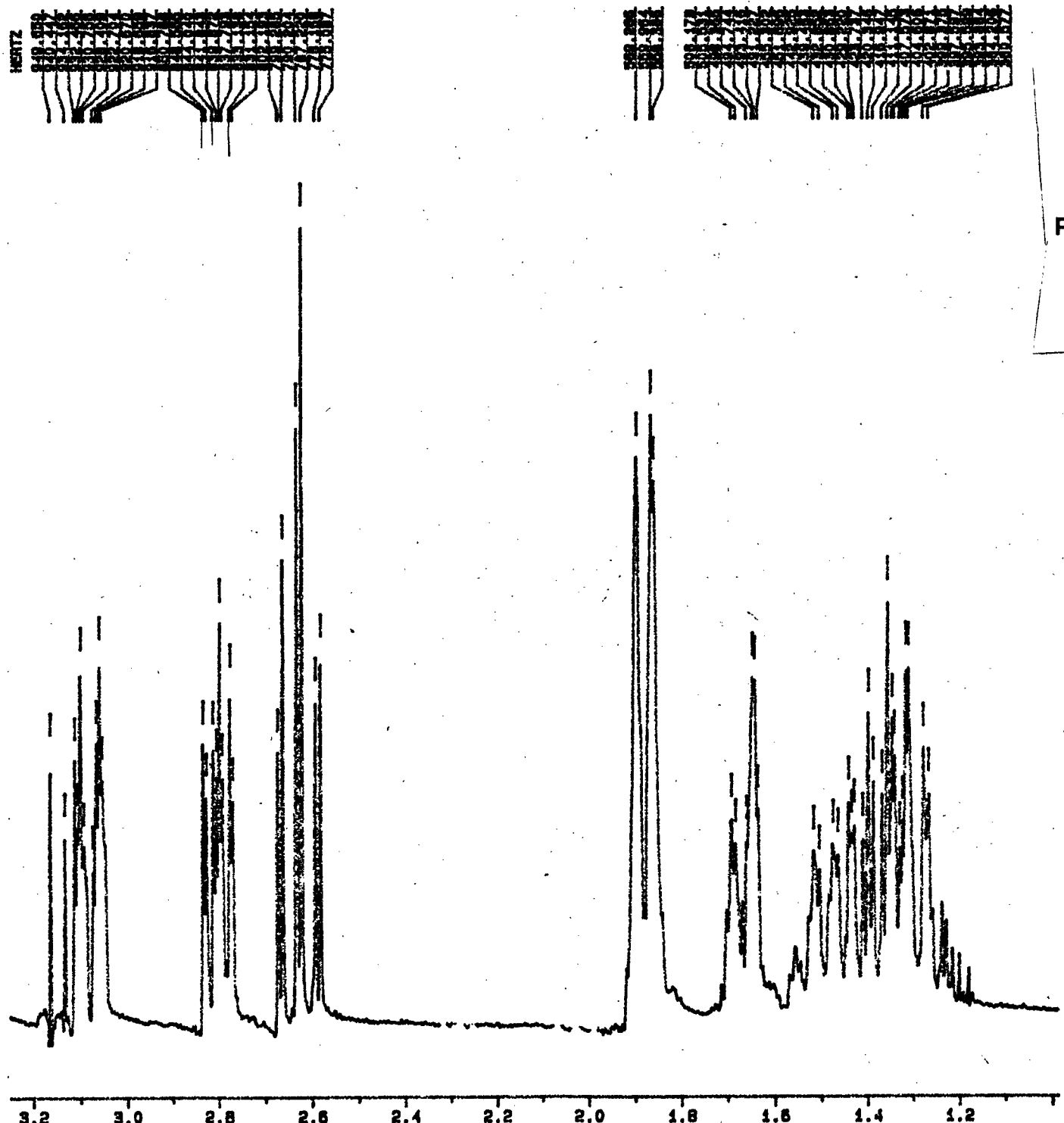


13 c



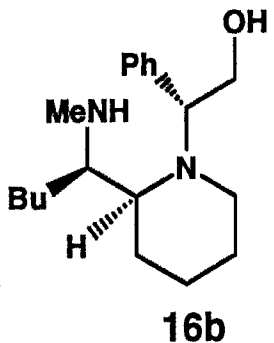


1480.82



136,149

128,991  
128,073  
127,837



77,888  
77,388  
77,188  
76,188  
76,131

60,449  
59,767  
59,296  
58,676

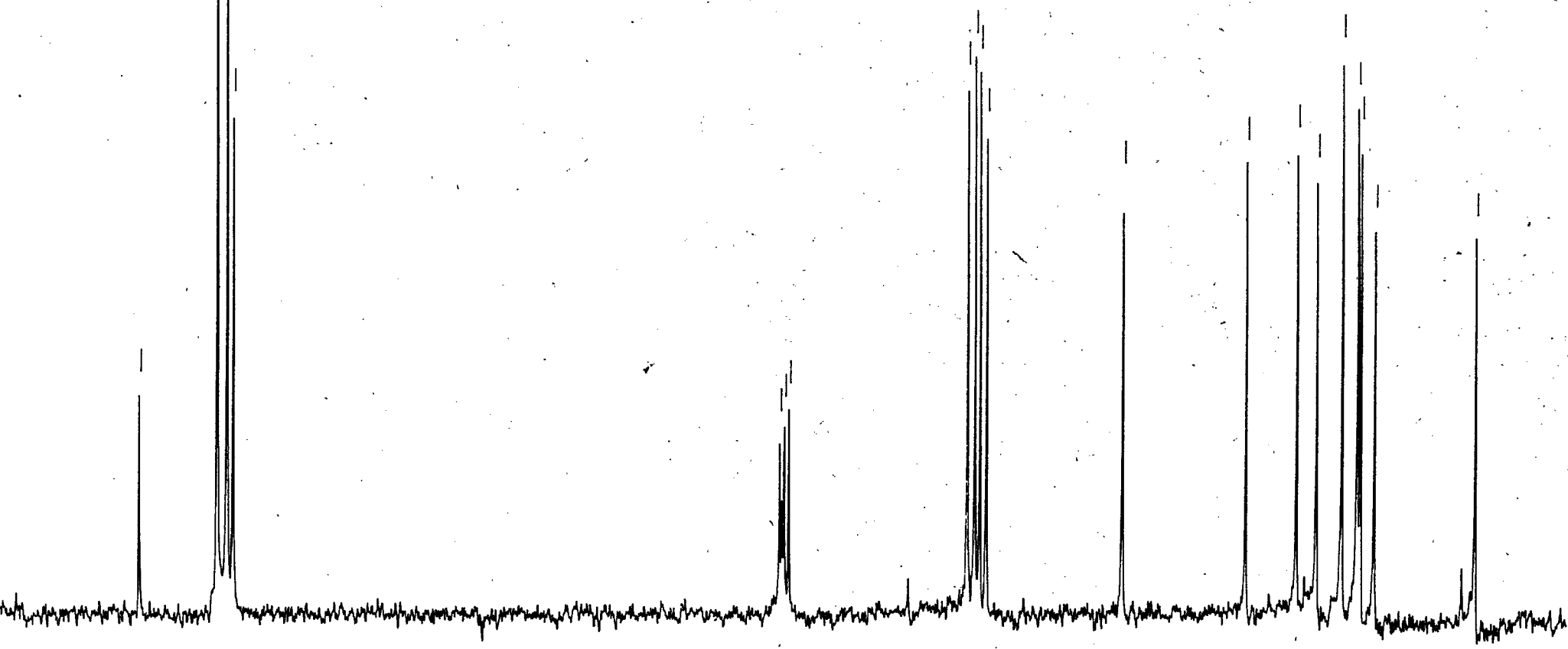
46,123

35,045

30,133  
28,609

26,273  
24,854  
24,156  
23,287

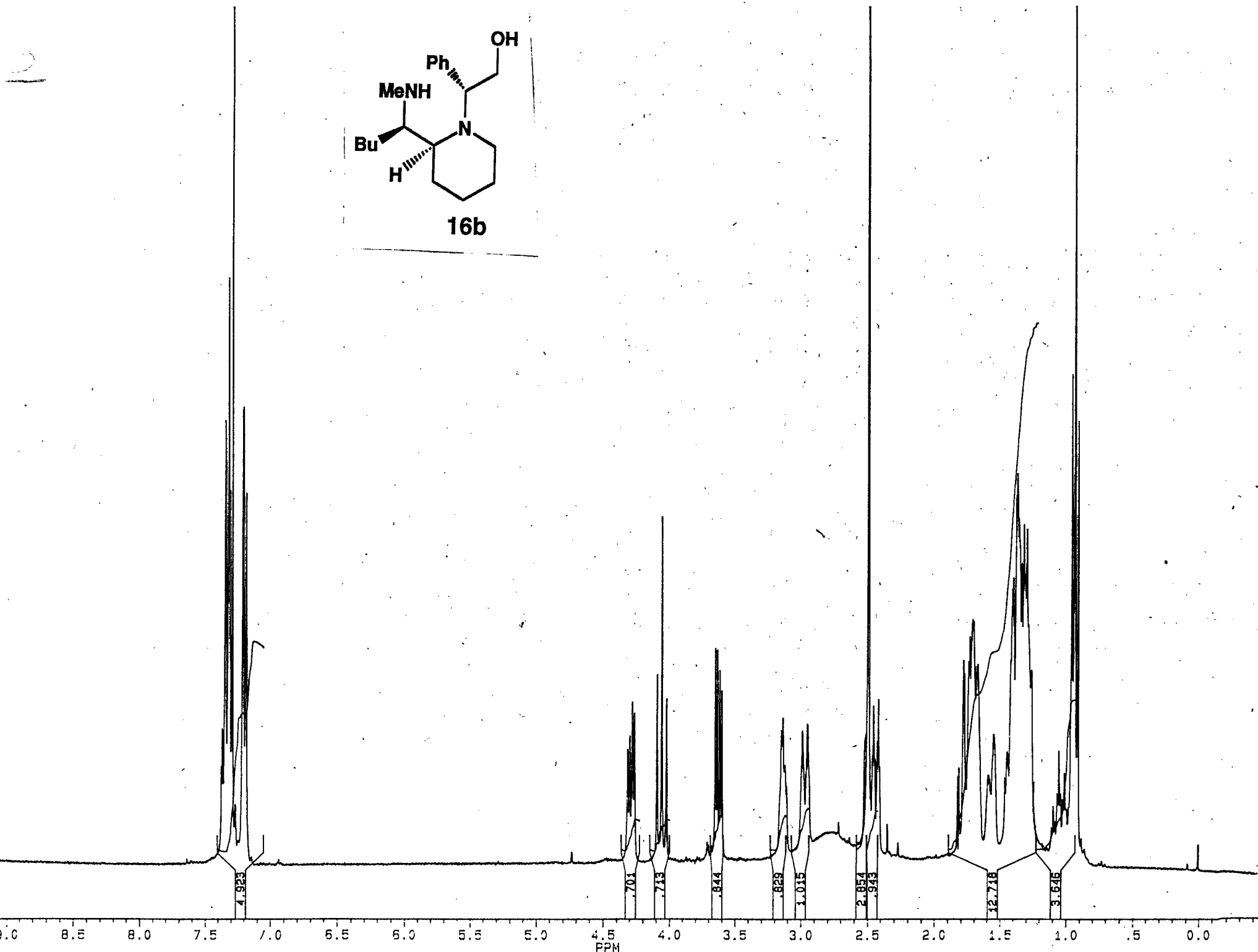
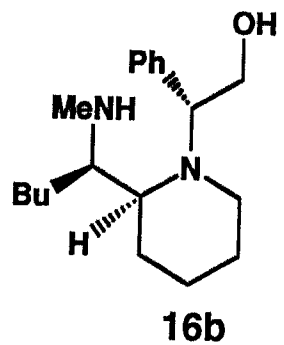
14,108

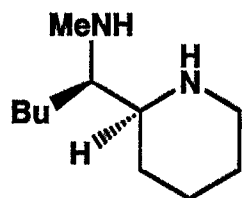


140 130 120 110 100 90 80 PPM 70 60 50 40 30 20 10

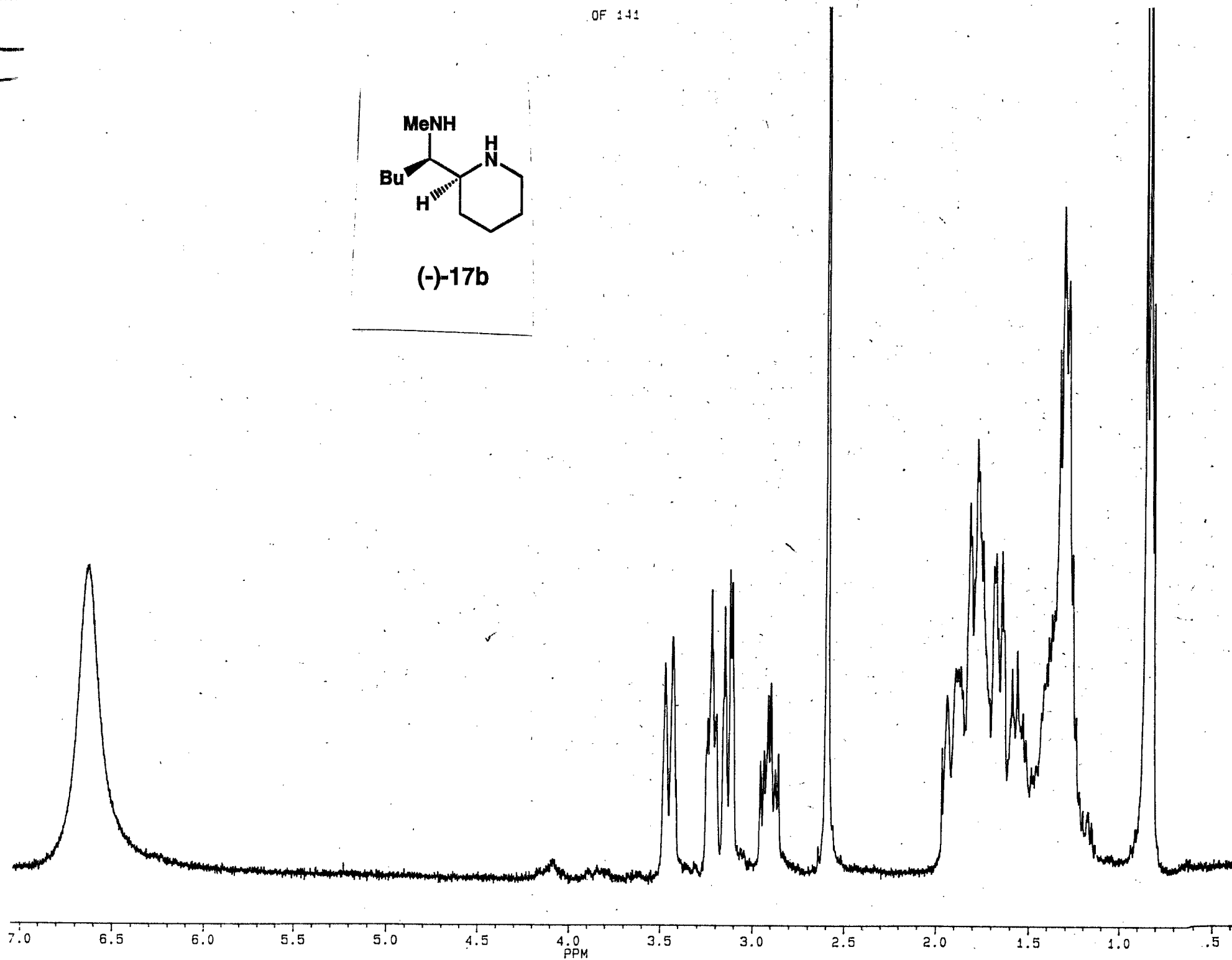
CDCl<sub>3</sub>

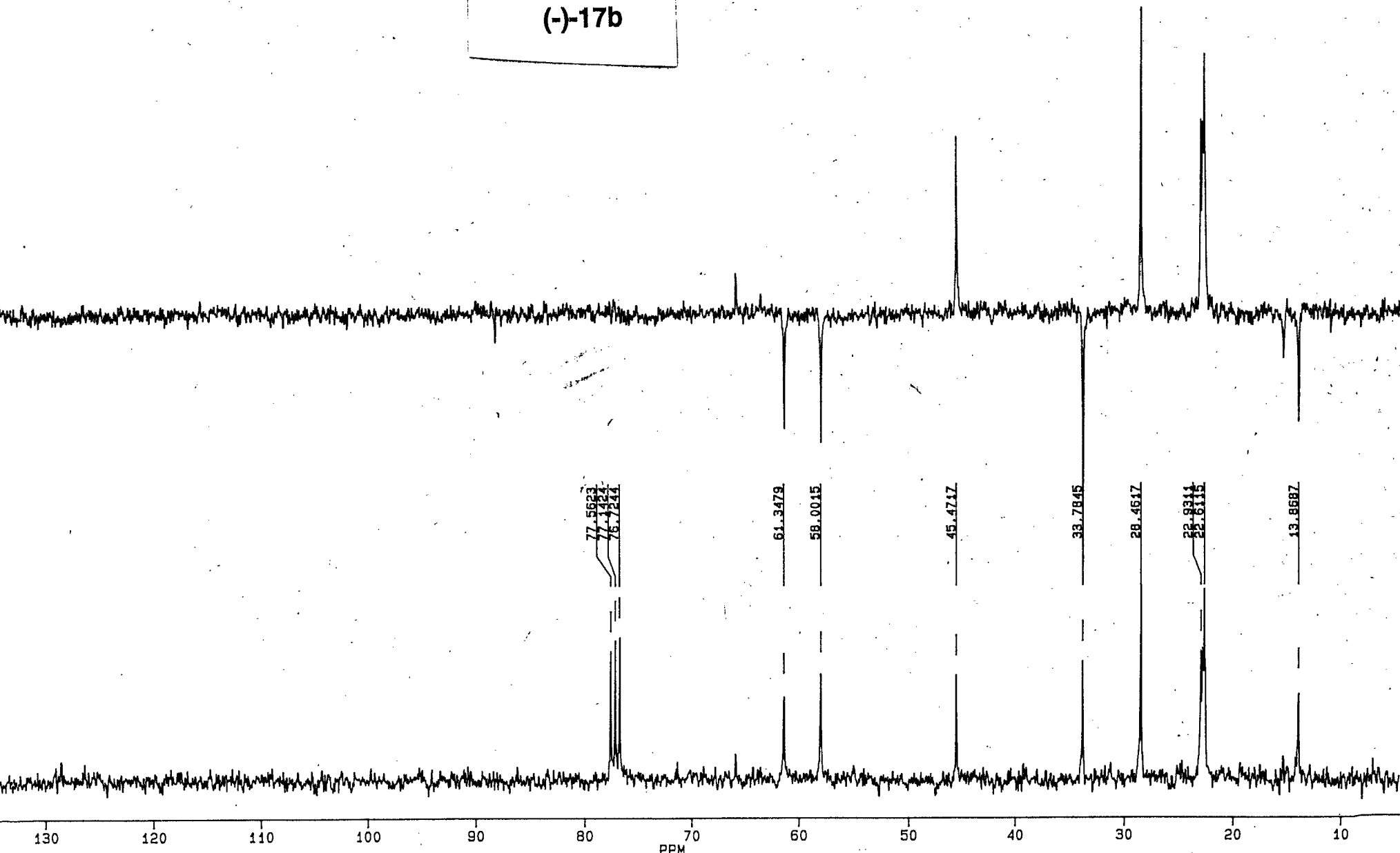
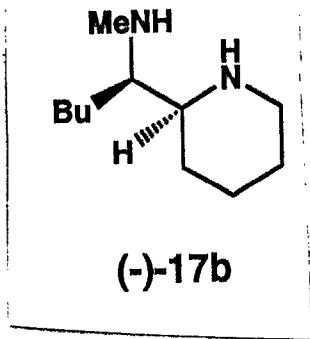


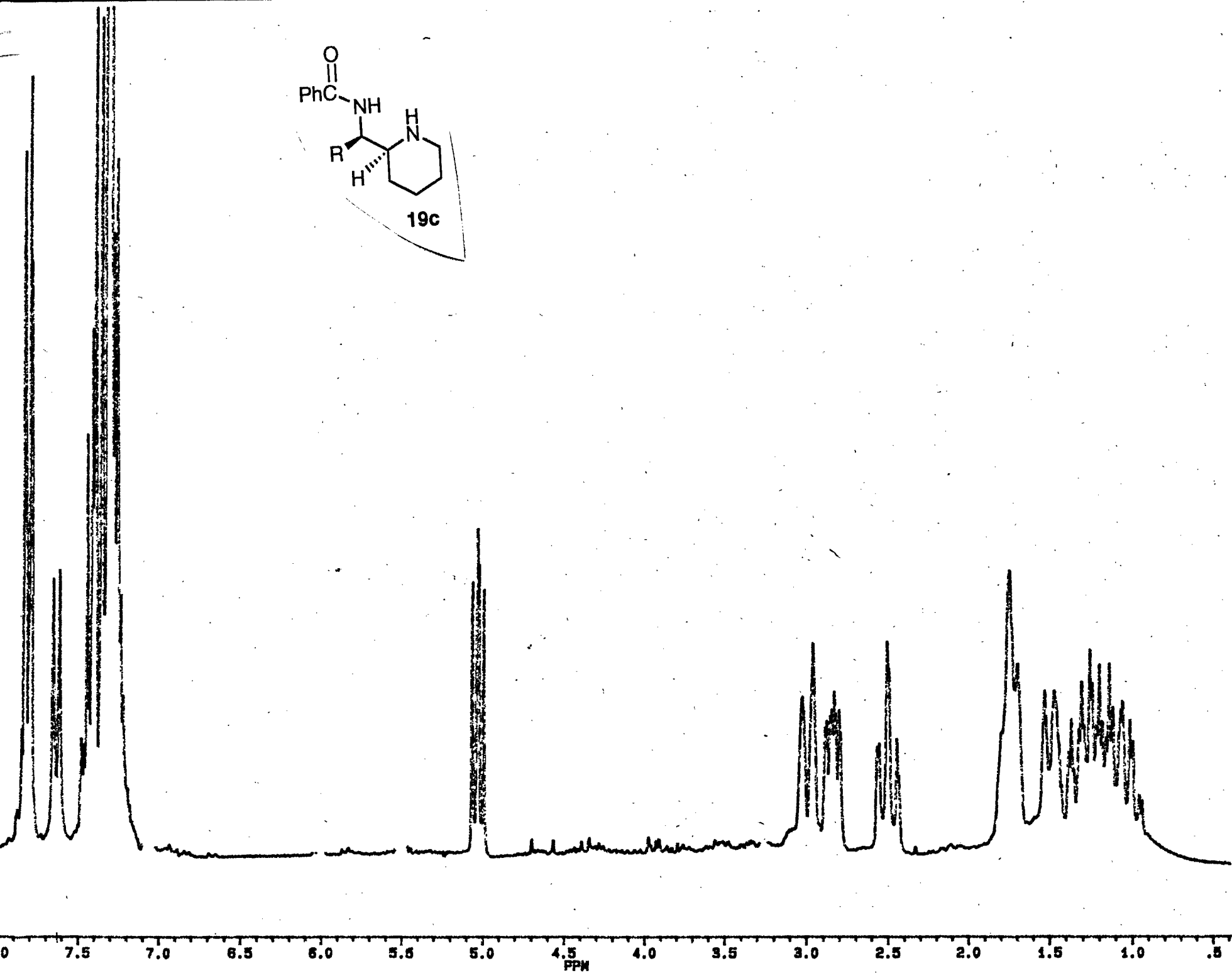
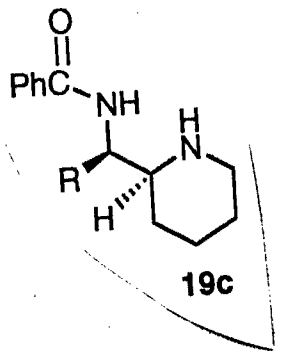


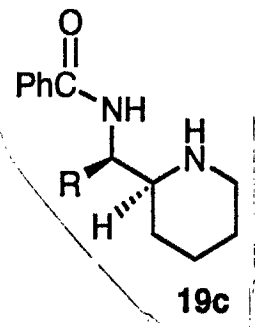
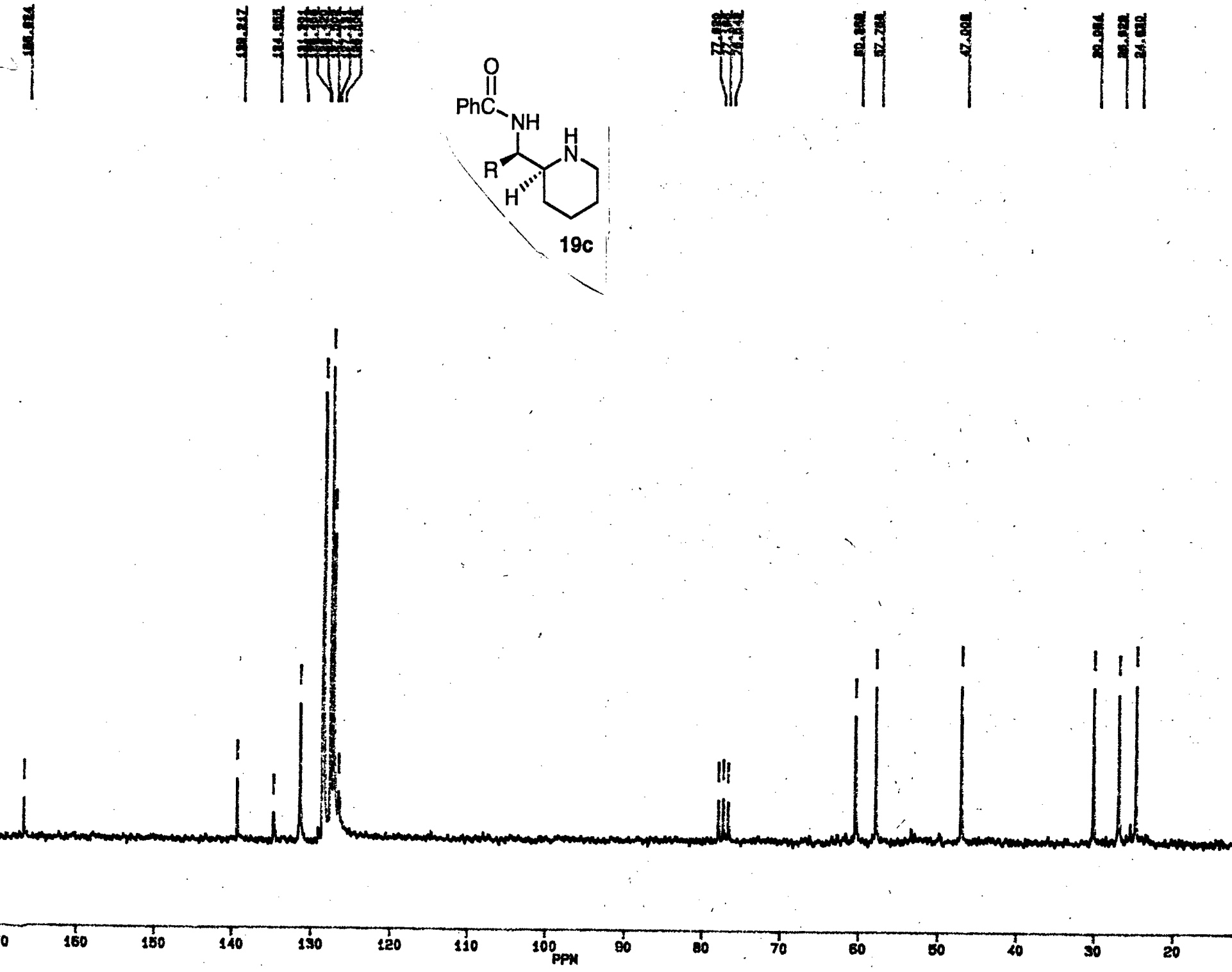


(-)-17b









147.739

141.480

129.048  
128.714  
128.380  
128.046  
127.712  
127.378  
127.044  
126.710  
126.376  
126.042

77.897  
77.192  
76.886

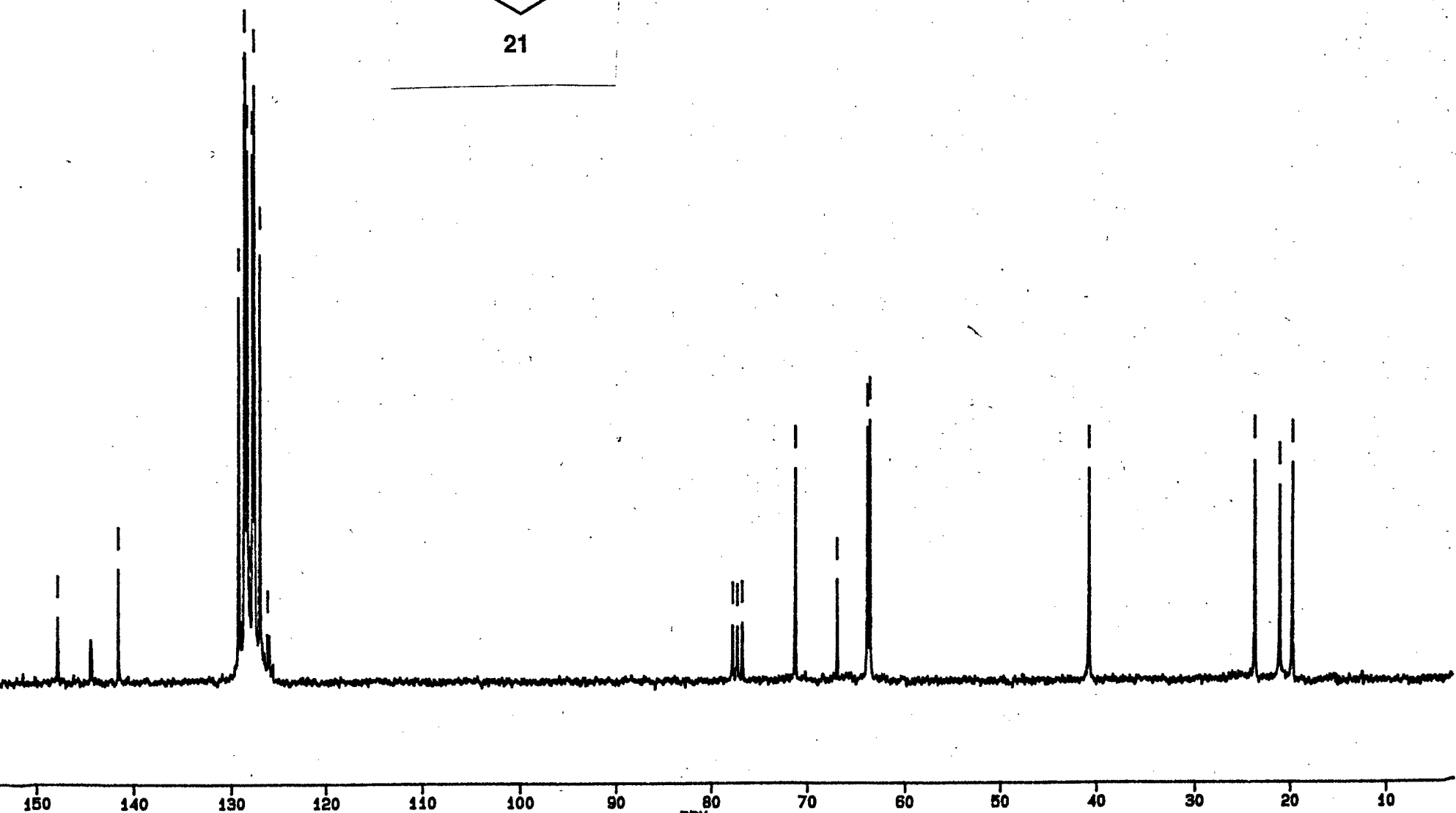
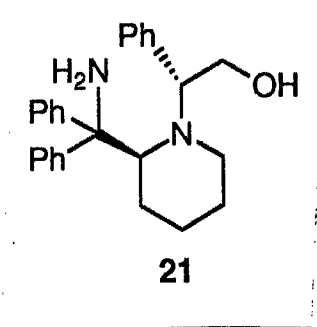
74.108

66.827  
63.789  
63.531

40.720

23.702

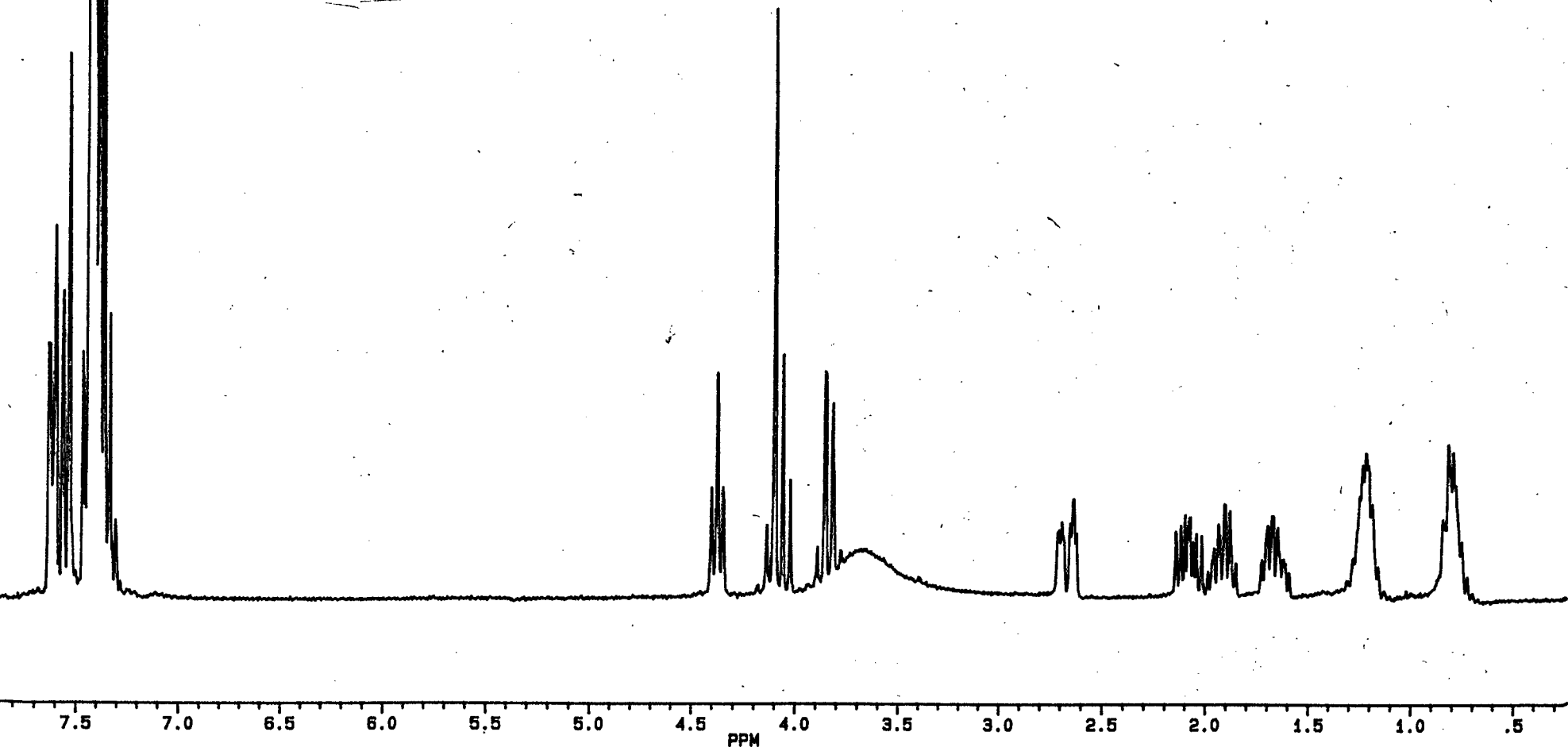
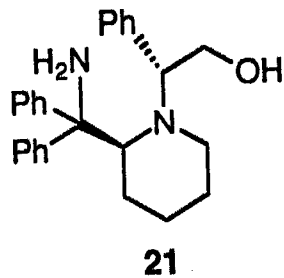
21.085  
18.703



150 140 130 120 110 100 90 80 70 60 50 40 30 20 10

PPM

22



19

141.250

129.849  
129.837  
128.825  
127.149  
127.137  
127.106

67.670

64.189

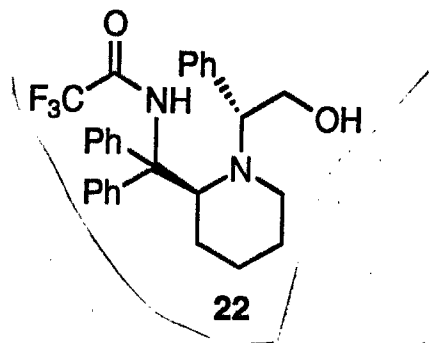
60.884

42.163

21.381

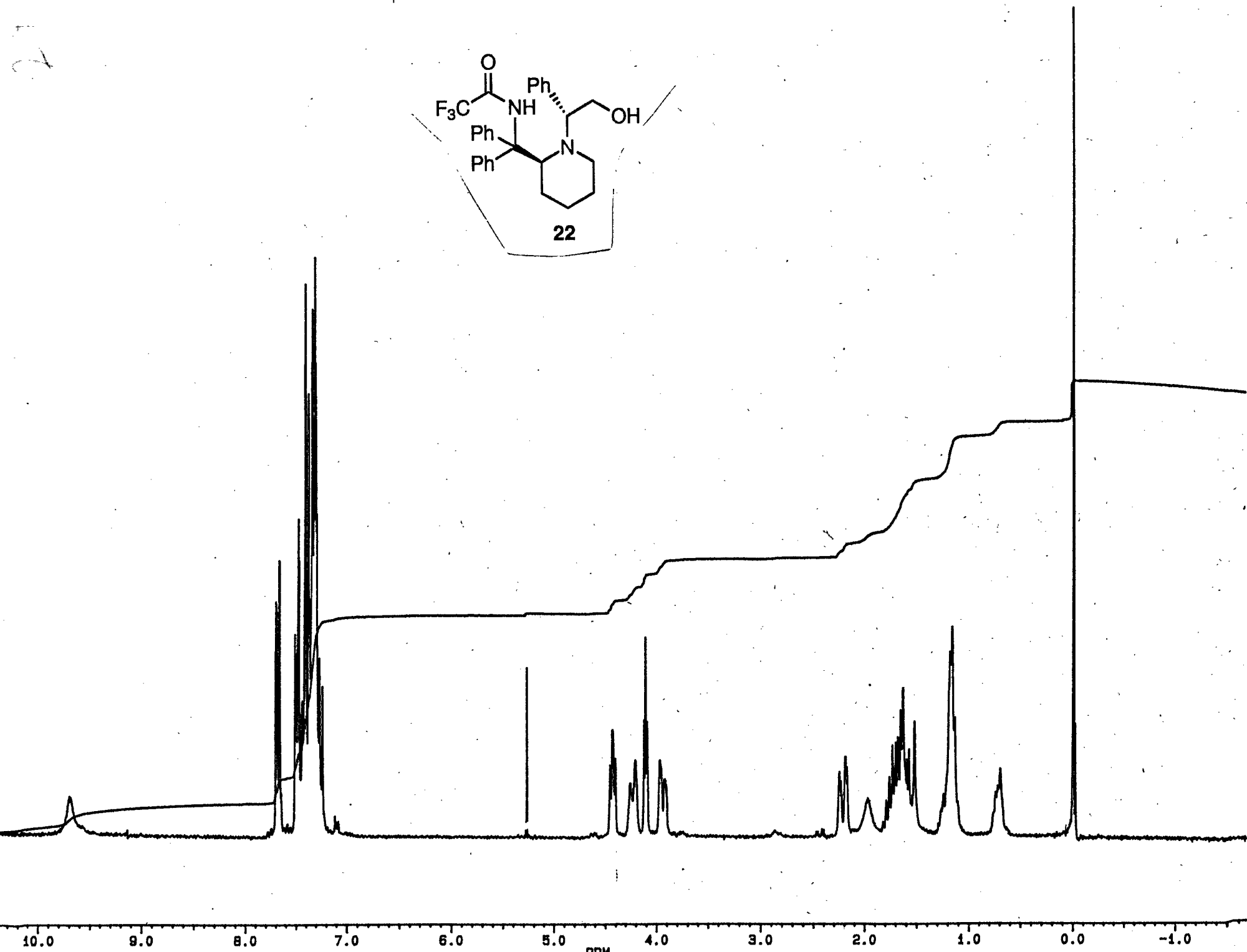
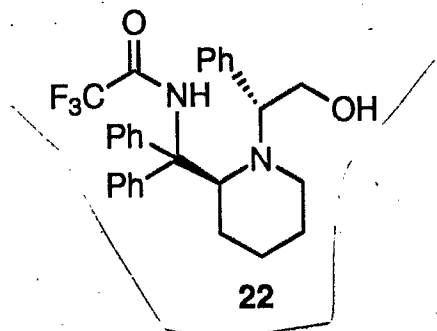
19.138

18.828

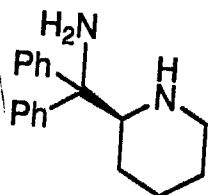


170 160 150 140 130 120 110 100 90 PPM 80 70 60 50 40 30 20 10 0

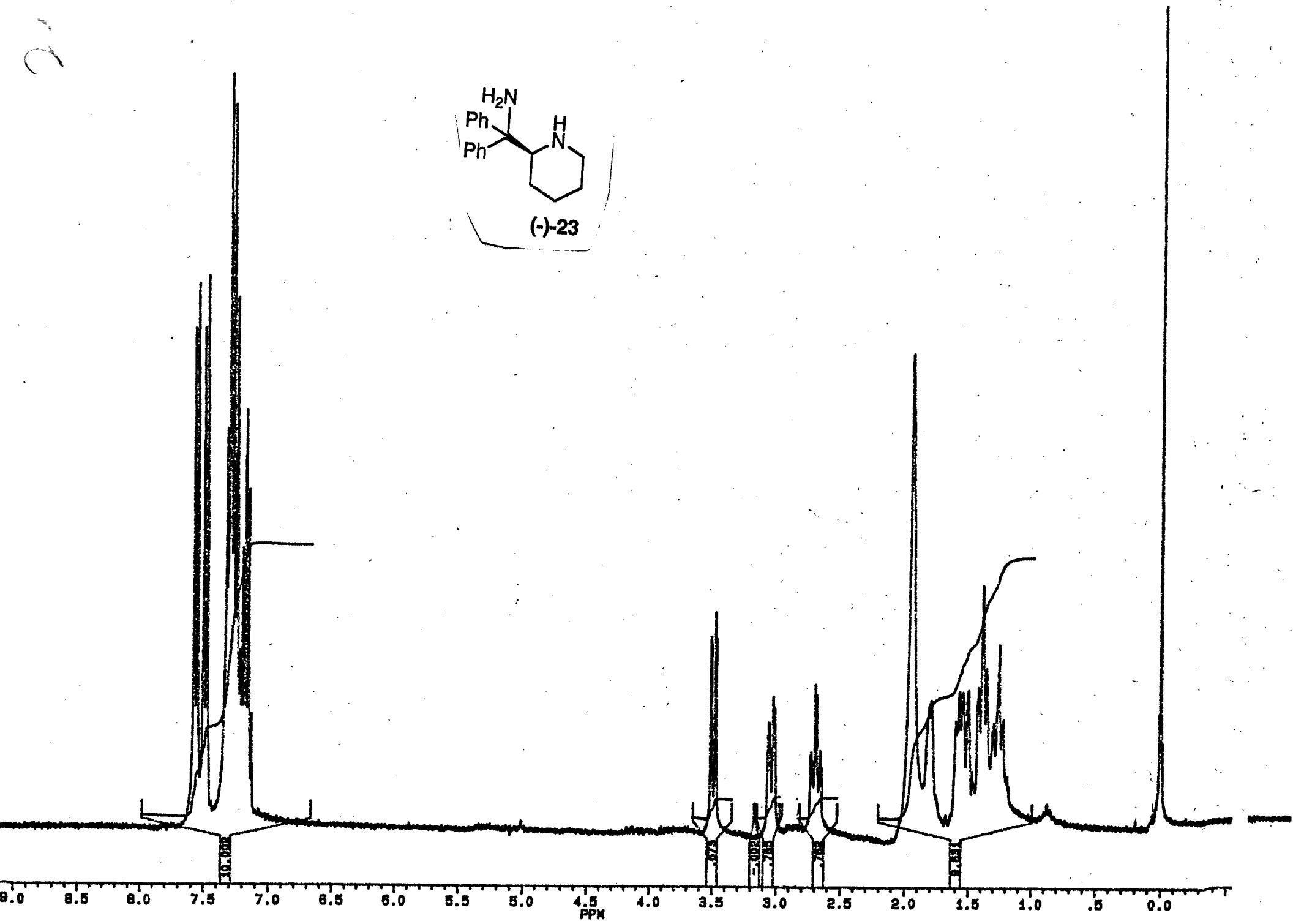




2.



(-)-23



DIPHENYL ANINE

