

Terms & Conditions

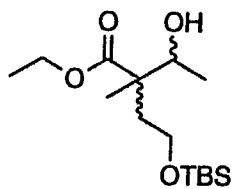
Electronic Supporting Information files are available without a subscription to ACS Web Editions. The American Chemical Society holds a copyright ownership interest in any copyrightable Supporting Information. Files available from the ACS website may be downloaded for personal use only. Users are not otherwise permitted to reproduce, republish, redistribute, or sell any Supporting Information from the ACS website, either in whole or in part, in either machine-readable form or any other form without permission from the American Chemical Society. For permission to reproduce, republish and redistribute this material, requesters must process their own requests via the RightsLink permission system. Information about how to use the RightsLink permission system can be found at <http://pubs.acs.org/page/copyright/permissions.html>



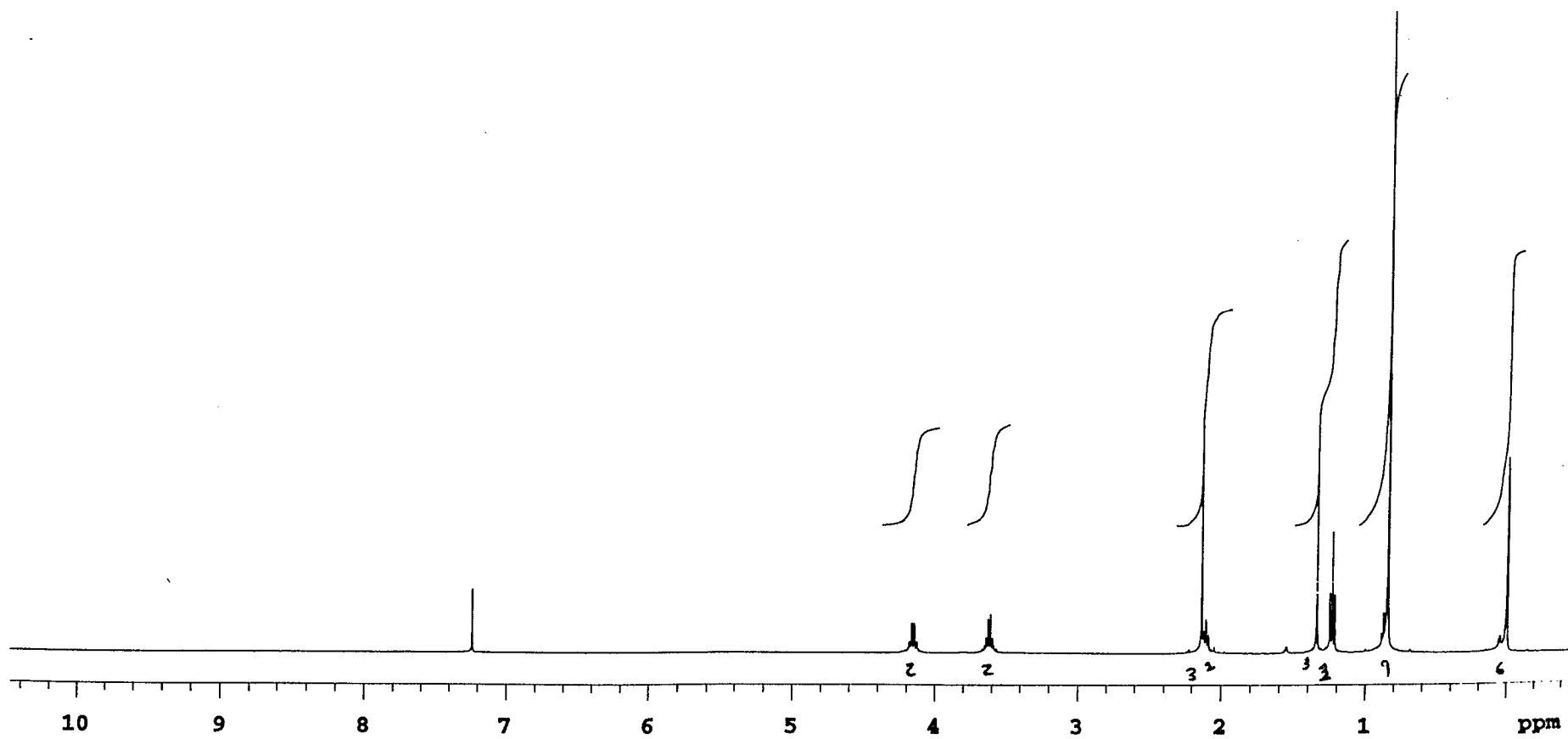
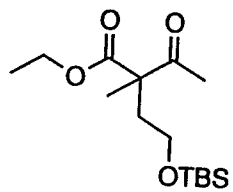
ACS Publications

MOST TRUSTED. MOST CITED. MOST READ.

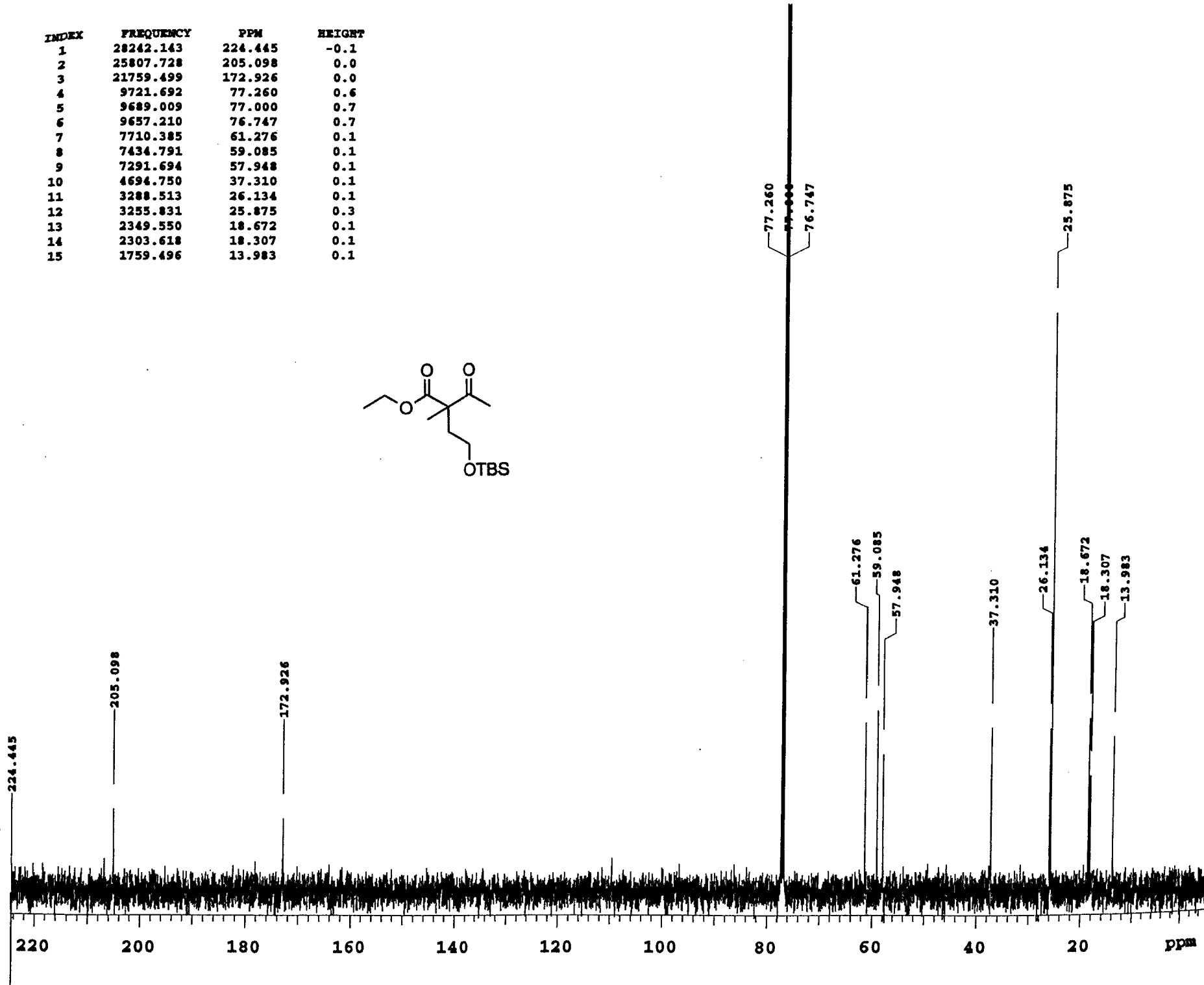
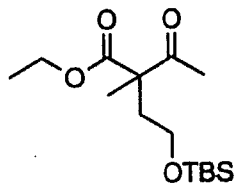
INDEX	FREQUENCY	PPM	HEIGHT
1	28244.793	224.466	-0.1
2	28243.026	224.452	0.1
3	22209.106	176.499	0.1
4	9720.808	77.253	0.9
5	9689.009	77.000	0.9
6	9656.326	76.740	0.9
7	8977.058	71.342	0.1
8	8821.594	70.107	0.1
9	7627.353	60.616	0.1
10	7607.037	60.454	0.1
11	7547.855	59.984	0.1
12	7491.323	59.535	0.0
13	6287.365	49.967	0.1
14	6240.550	49.595	0.1
15	4875.829	38.749	0.1
16	4828.130	38.370	0.1
17	3255.831	25.875	0.2
18	3251.414	25.839	0.3
19	2293.018	18.223	0.1
20	2249.736	17.879	0.1
21	2231.186	17.732	0.1
22	2203.803	17.514	0.1
23	1779.813	14.144	0.1



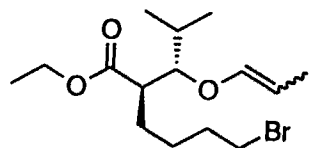
220 200 180 160 140 120 100 80 60 40 20 ppm



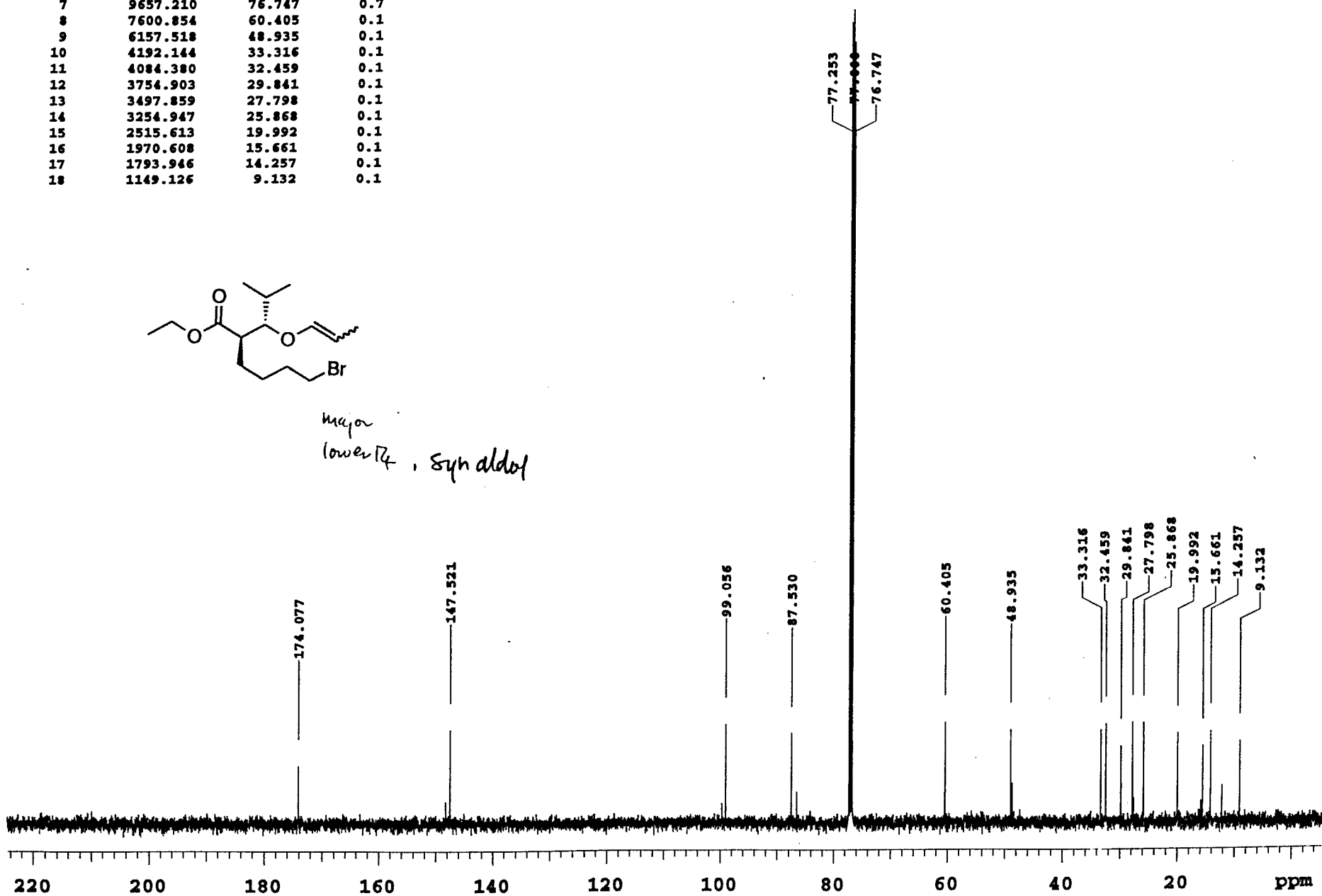
INDEX	FREQUENCY	PPM	HEIGHT
1	28242.143	224.445	-0.1
2	25807.728	205.098	0.0
3	21759.499	172.926	0.0
4	9721.692	77.260	0.6
5	9689.009	77.000	0.7
6	9657.210	76.747	0.7
7	7710.385	61.276	0.1
8	7434.791	59.085	0.1
9	7291.694	57.948	0.1
10	4694.750	37.310	0.1
11	3288.513	26.134	0.1
12	3255.831	25.875	0.3
13	2349.550	18.672	0.1
14	2303.618	18.307	0.1
15	1759.496	13.983	0.1

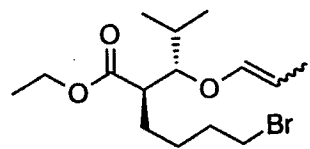


INDEX	FREQUENCY	PPM	HEIGHT
1	21904.363	174.077	0.1
2	18562.784	147.521	0.1
3	12464.382	99.056	0.1
4	11013.980	87.530	0.1
5	9720.808	77.253	0.7
6	9689.009	77.000	0.7
7	9657.210	76.747	0.7
8	7600.854	60.405	0.1
9	6157.518	48.935	0.1
10	4192.144	33.316	0.1
11	4084.380	32.459	0.1
12	3754.903	29.841	0.1
13	3497.859	27.798	0.1
14	3254.947	25.868	0.1
15	2515.613	19.992	0.1
16	1970.608	15.661	0.1
17	1793.946	14.257	0.1
18	1149.126	9.132	0.1

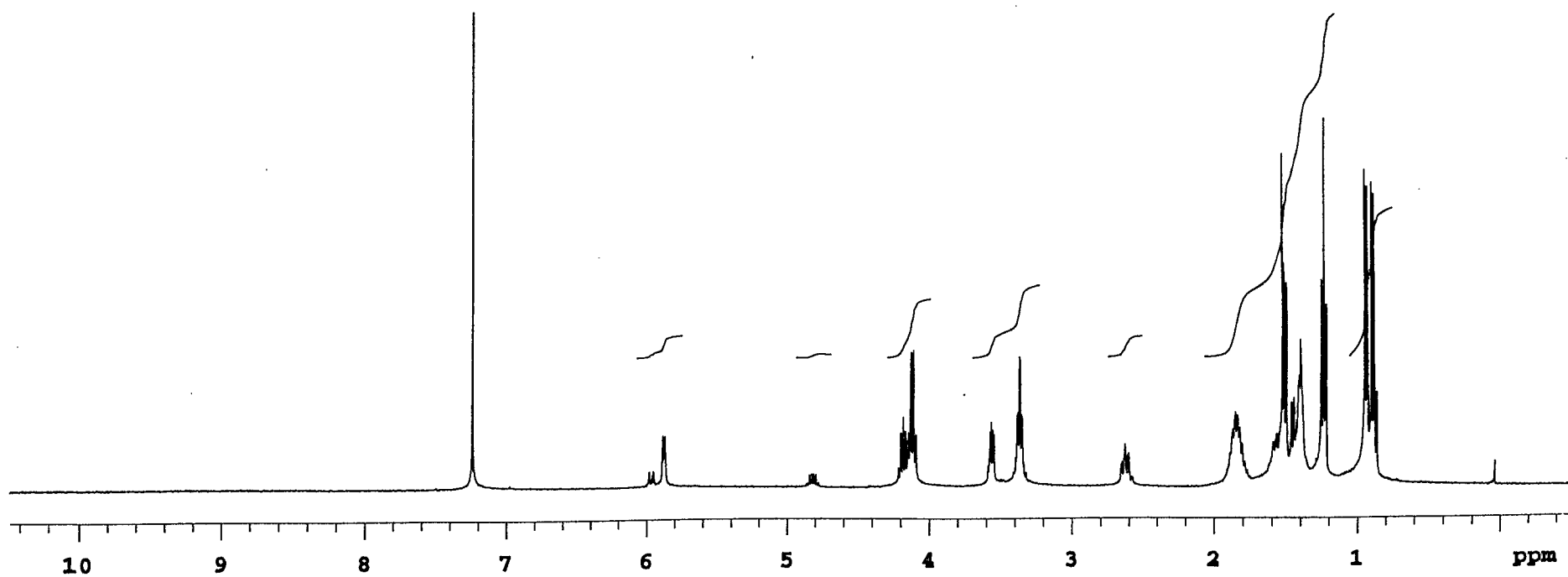


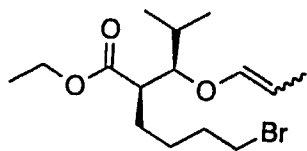
major
lower T_g, syn aldol





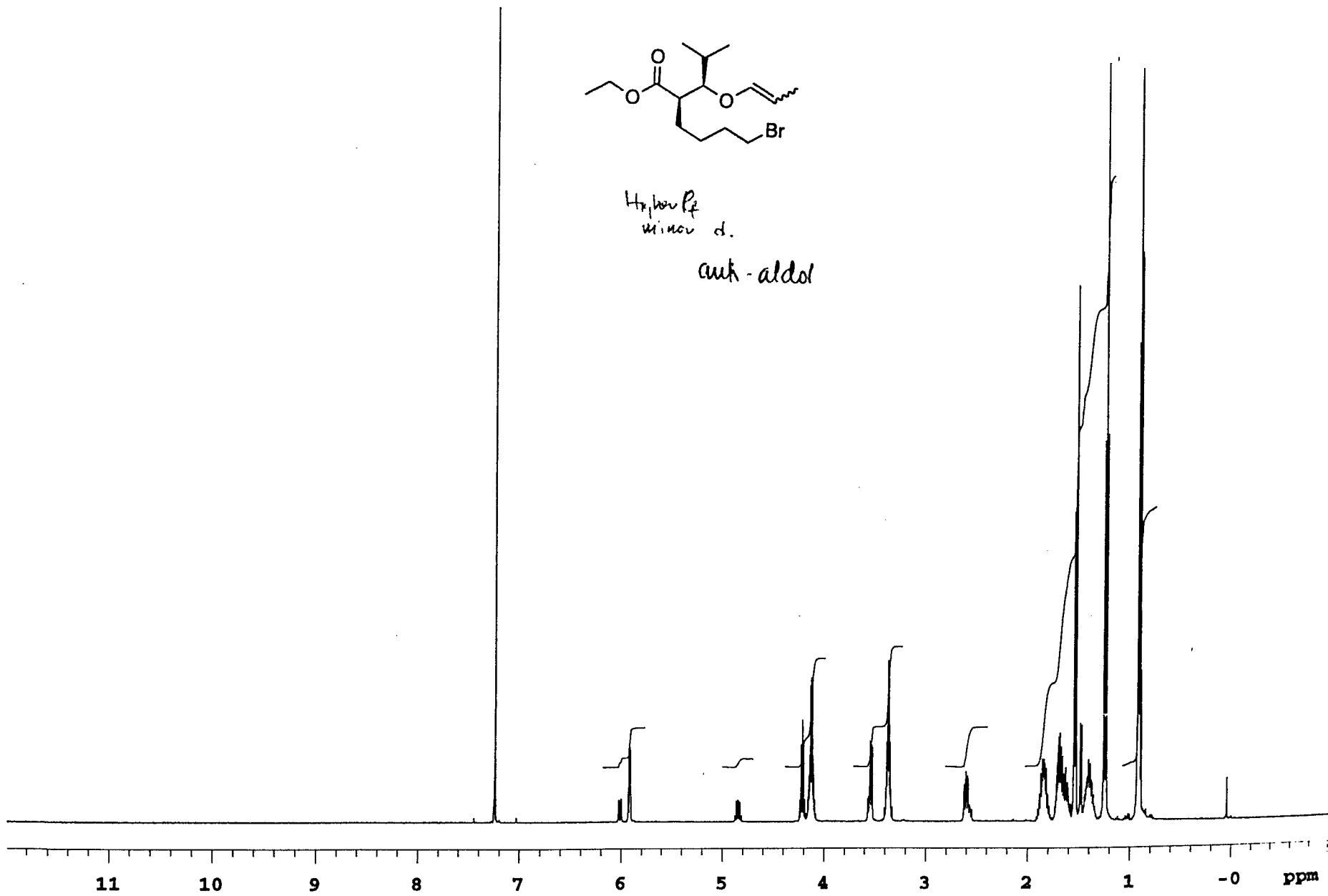
high major d.
lower 1/4, syn aldol





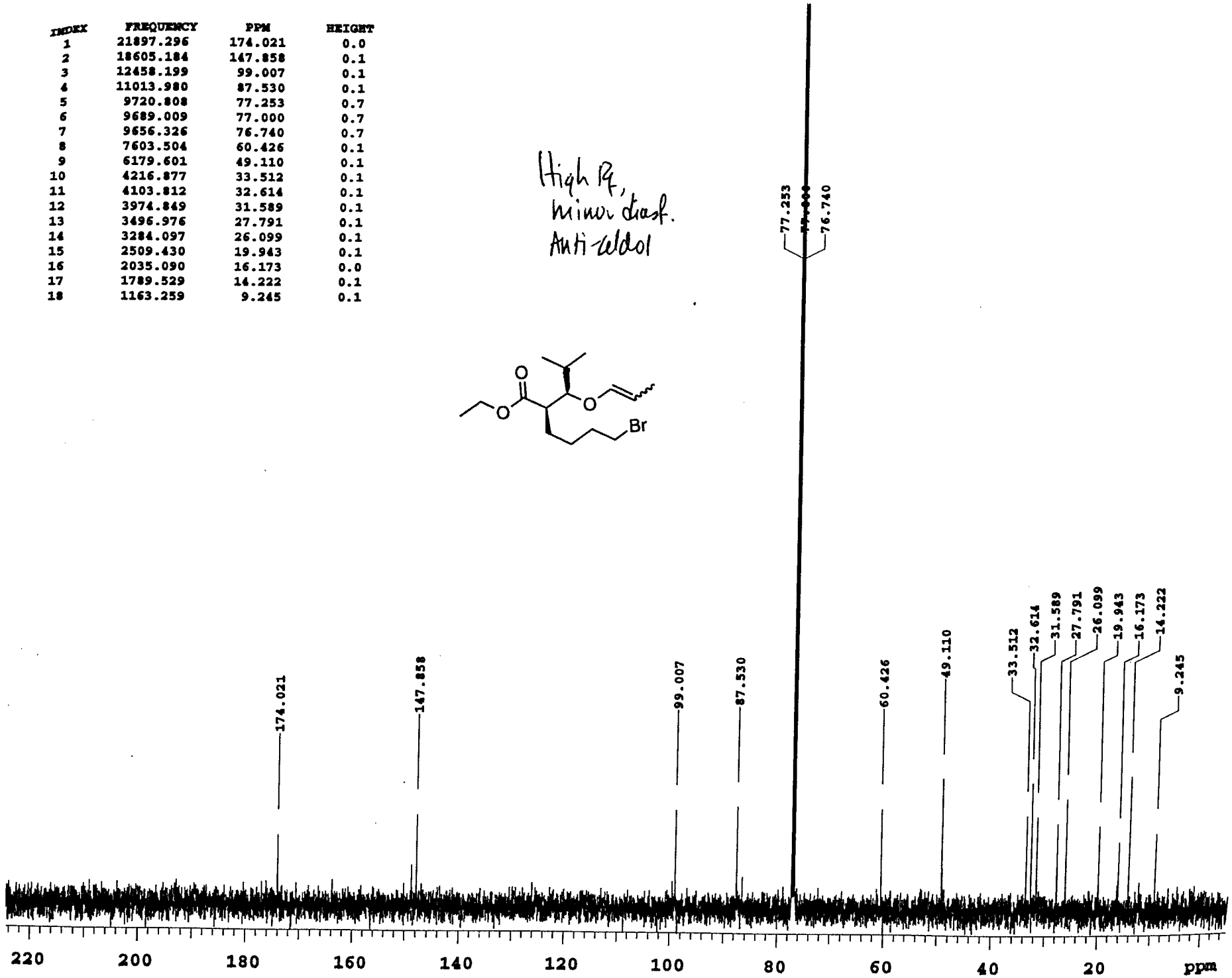
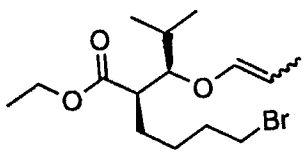
*H₂PO₄
window d.*

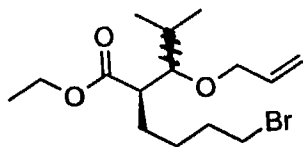
anti-aldol



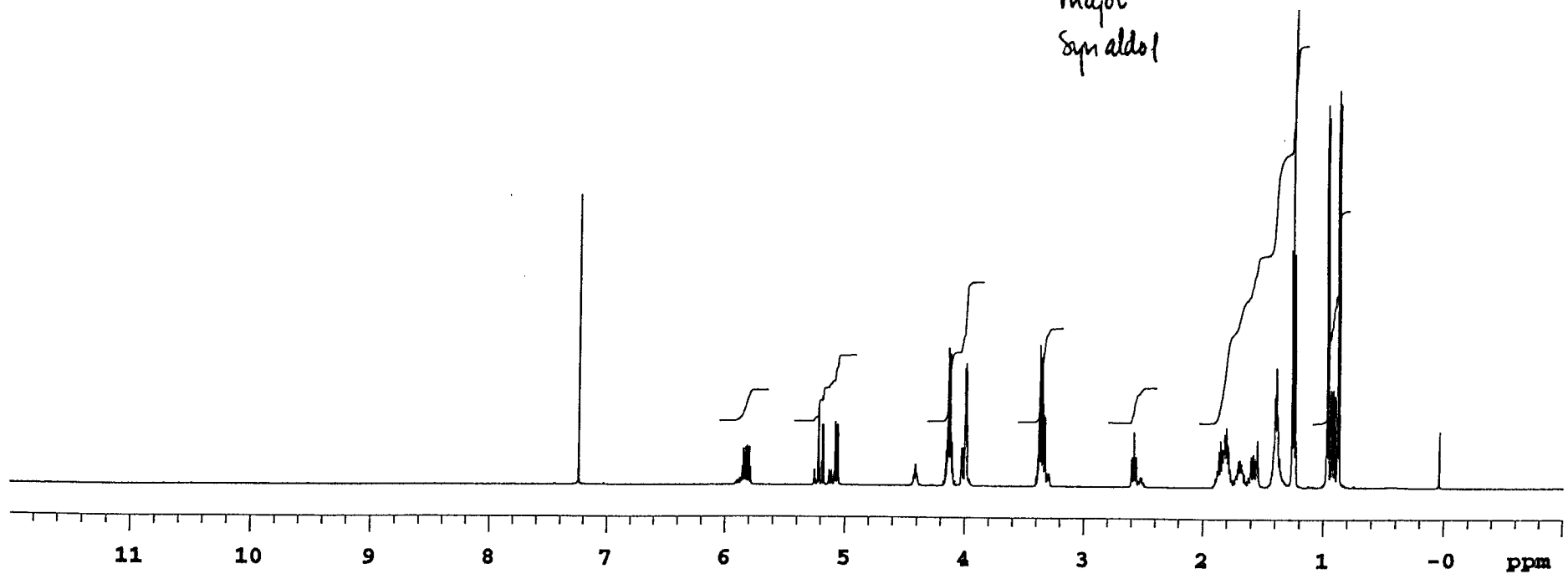
INDEX	FREQUENCY	PPM	HEIGHT
1	21897.296	174.021	0.0
2	18605.184	147.858	0.1
3	12458.199	99.007	0.1
4	11013.980	87.530	0.1
5	9720.808	77.253	0.7
6	9689.009	77.000	0.7
7	9656.326	76.740	0.7
8	7603.504	60.426	0.1
9	6179.601	49.110	0.1
10	4216.877	33.512	0.1
11	4103.812	32.614	0.1
12	3974.849	31.589	0.1
13	3496.976	27.791	0.1
14	3284.097	26.099	0.1
15	2509.430	19.943	0.1
16	2035.090	16.173	0.0
17	1789.529	14.222	0.1
18	1163.259	9.245	0.1

High R_f,
minor diast.
Anti-aldol



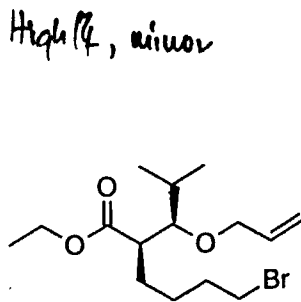


Lower R_f,
major
Syn aldol

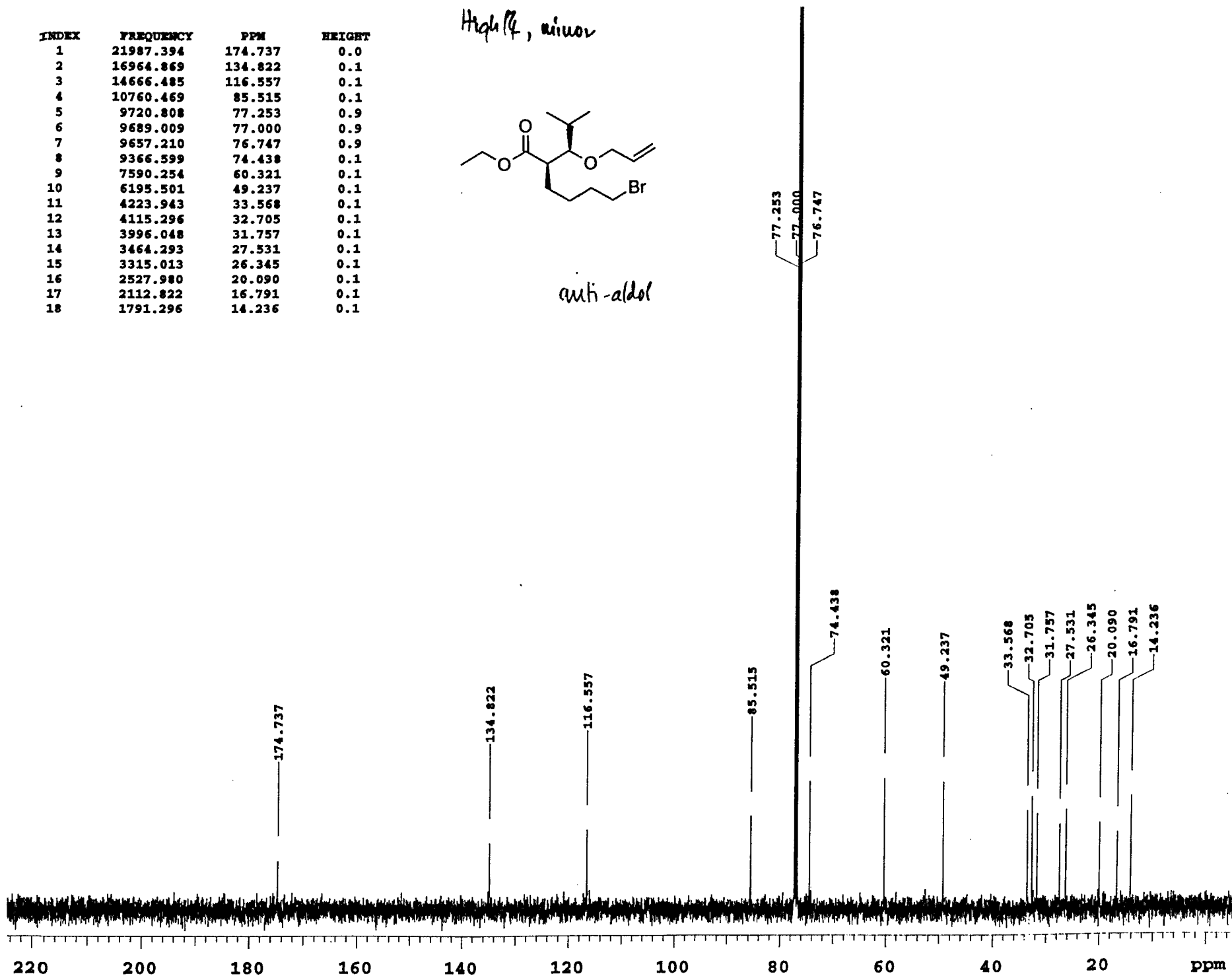


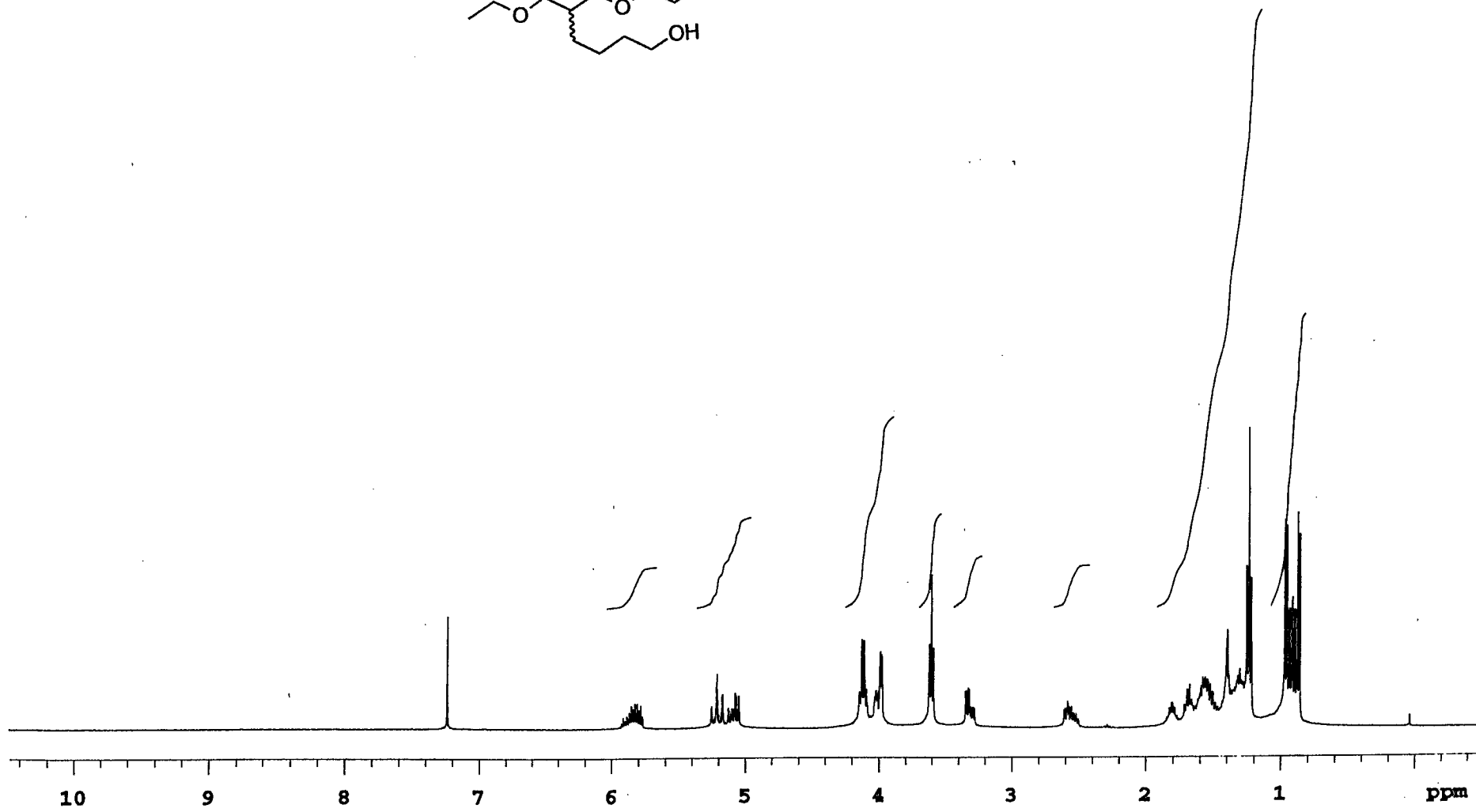
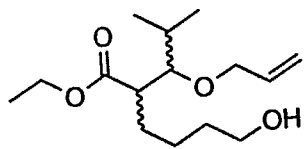
Red

INDEX	FREQUENCY	PPM	HEIGHT
1	21987.394	174.737	0.0
2	16964.869	134.822	0.1
3	14666.485	116.557	0.1
4	10760.469	85.515	0.1
5	9720.808	77.253	0.9
6	9689.009	77.000	0.9
7	9657.210	76.747	0.9
8	9366.599	74.438	0.1
9	7590.254	60.321	0.1
10	6195.501	49.237	0.1
11	4223.943	33.568	0.1
12	4115.296	32.705	0.1
13	3996.048	31.757	0.1
14	3464.293	27.531	0.1
15	3315.013	26.345	0.1
16	2527.980	20.090	0.1
17	2112.822	16.791	0.1
18	1791.296	14.236	0.1

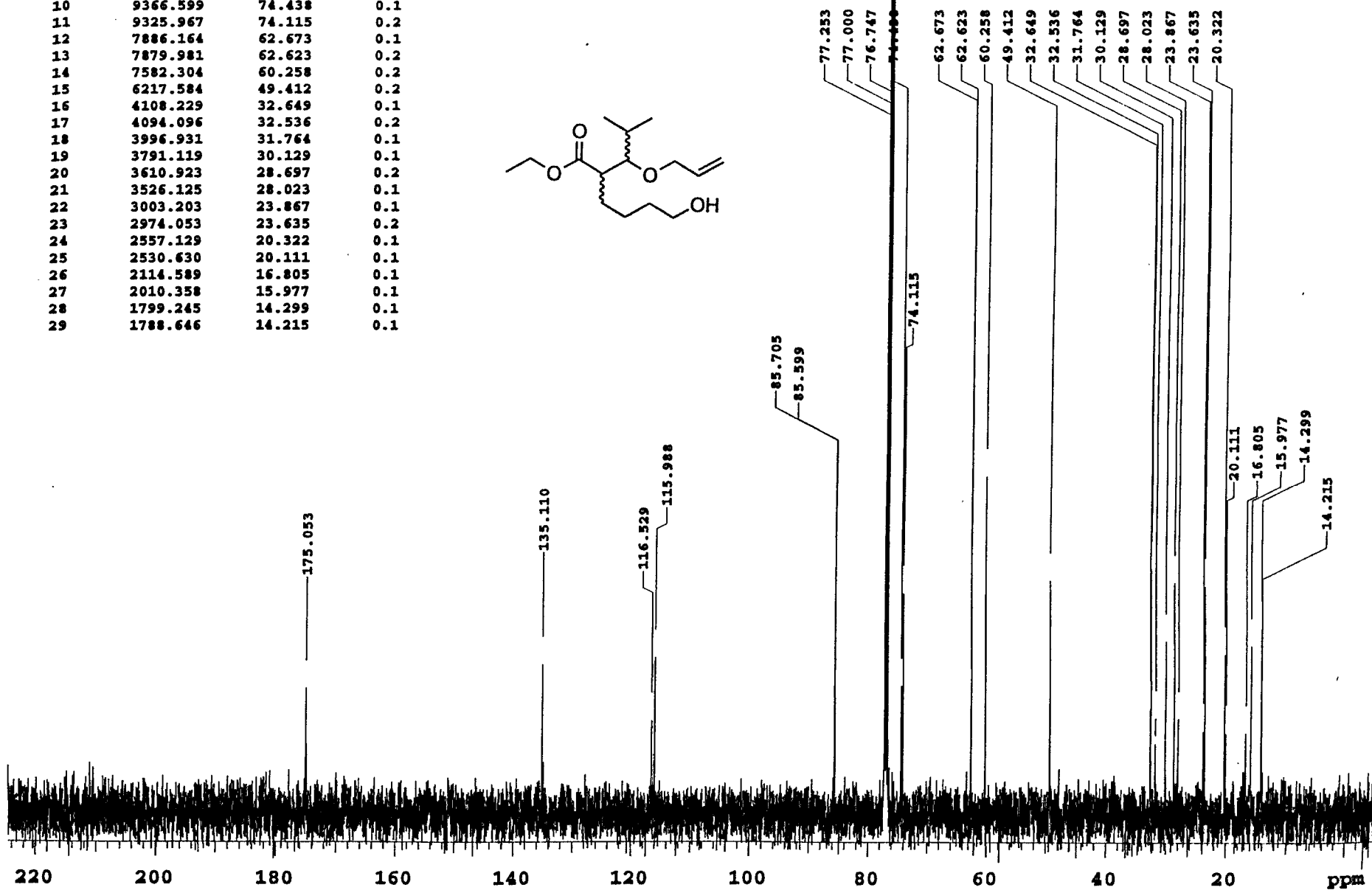
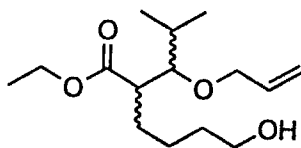


anti-aldol

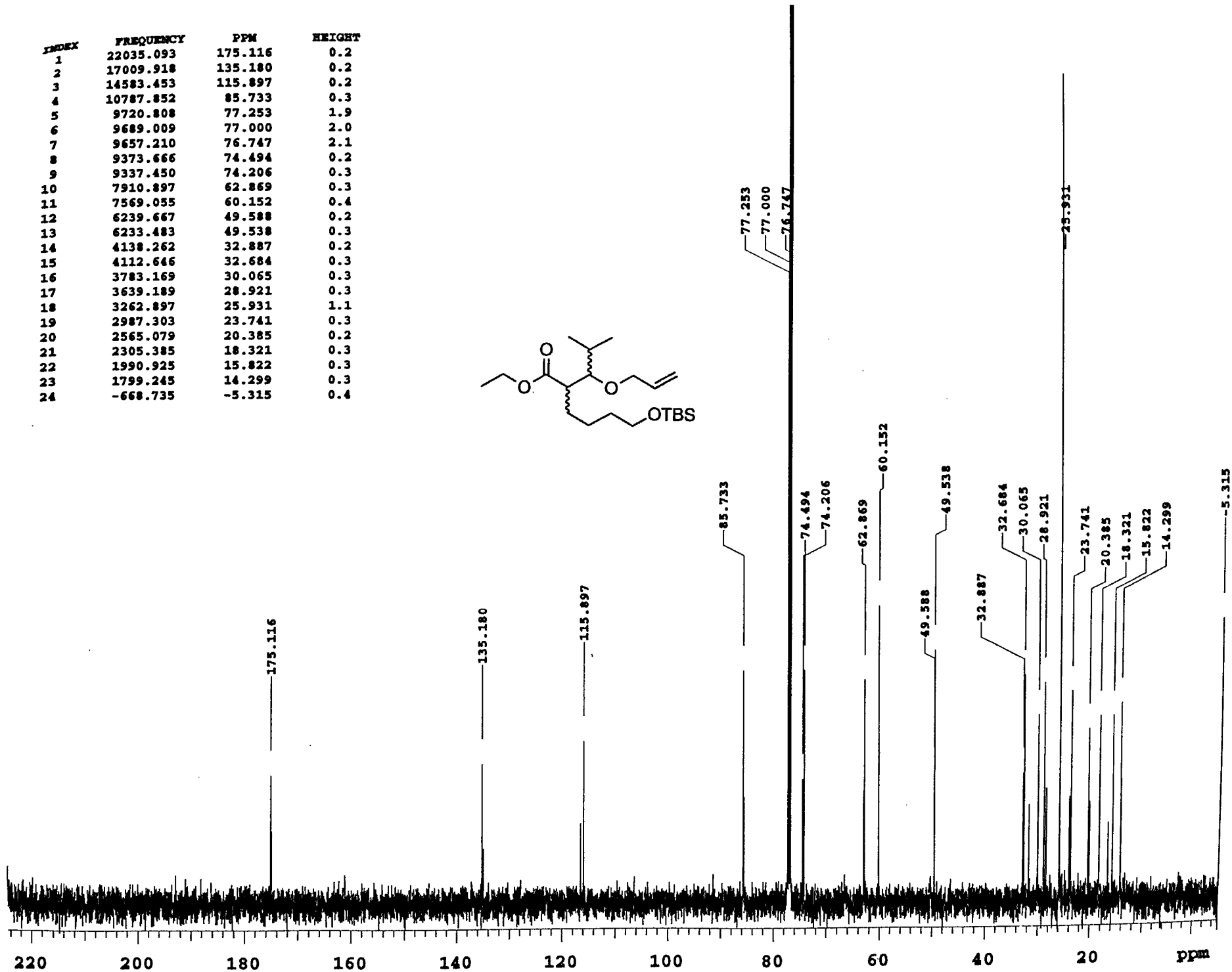
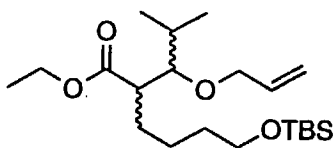




INDEX	FREQUENCY	PPM	HEIGHT
1	22027.143	175.053	0.1
2	17001.085	135.110	0.1
3	14662.952	116.529	0.1
4	14594.937	115.988	0.1
5	10784.319	85.705	0.2
6	10771.069	85.599	0.1
7	9720.808	77.253	2.4
8	9689.009	77.000	2.5
9	9657.210	76.747	2.4
10	9366.599	74.438	0.1
11	9325.967	74.115	0.2
12	7886.164	62.673	0.1
13	7879.981	62.623	0.2
14	7582.304	60.258	0.2
15	6217.584	49.412	0.2
16	4108.229	32.649	0.1
17	4094.096	32.536	0.2
18	3996.931	31.764	0.1
19	3791.119	30.129	0.1
20	3610.923	28.697	0.2
21	3526.125	28.023	0.1
22	3003.203	23.867	0.1
23	2974.053	23.635	0.2
24	2557.129	20.322	0.1
25	2530.630	20.111	0.1
26	2114.589	16.805	0.1
27	2010.358	15.977	0.1
28	1799.245	14.299	0.1
29	1788.646	14.215	0.1

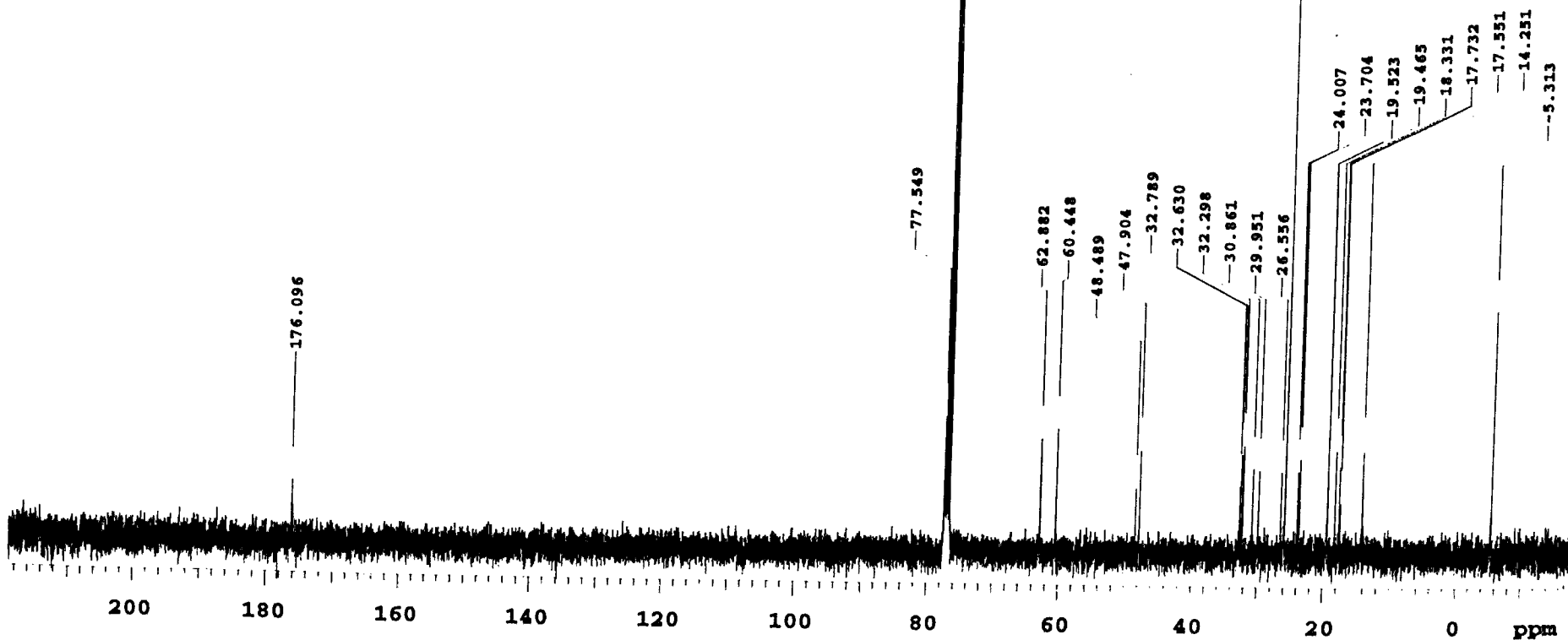
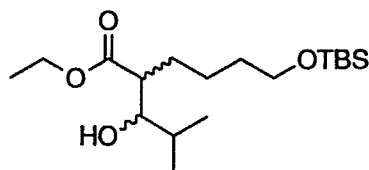


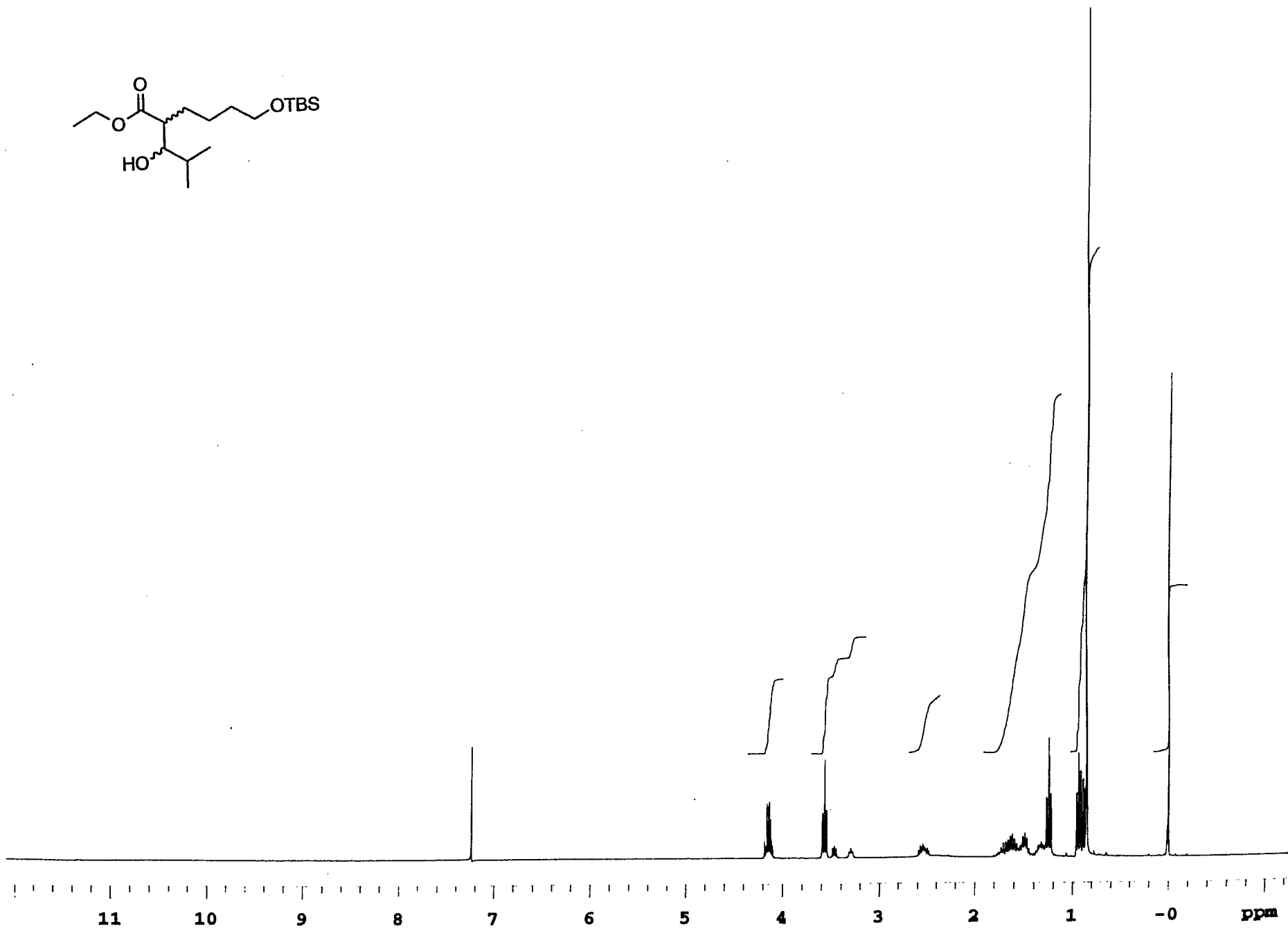
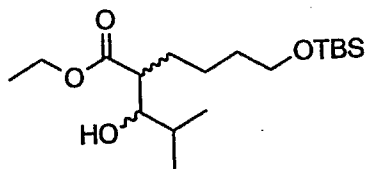
INDEX	FREQUENCY	PPM	HEIGHT
1	22035.093	175.116	0.2
2	17009.918	135.180	0.2
3	14583.453	115.897	0.2
4	10787.852	85.733	0.3
5	9720.808	77.253	1.9
6	9689.009	77.000	2.0
7	9657.210	76.747	2.1
8	9373.666	74.494	0.2
9	9337.450	74.206	0.3
10	7910.897	62.869	0.3
11	7569.055	60.152	0.4
12	6239.667	49.588	0.2
13	6233.483	49.538	0.3
14	4138.262	32.887	0.2
15	4112.646	32.684	0.3
16	3783.169	30.065	0.3
17	3639.189	28.921	0.3
18	3262.897	25.931	1.1
19	2987.303	23.741	0.3
20	2565.079	20.385	0.2
21	2305.385	18.321	0.3
22	1990.925	15.822	0.3
23	1799.245	14.299	0.3
24	-668.735	-5.315	0.4



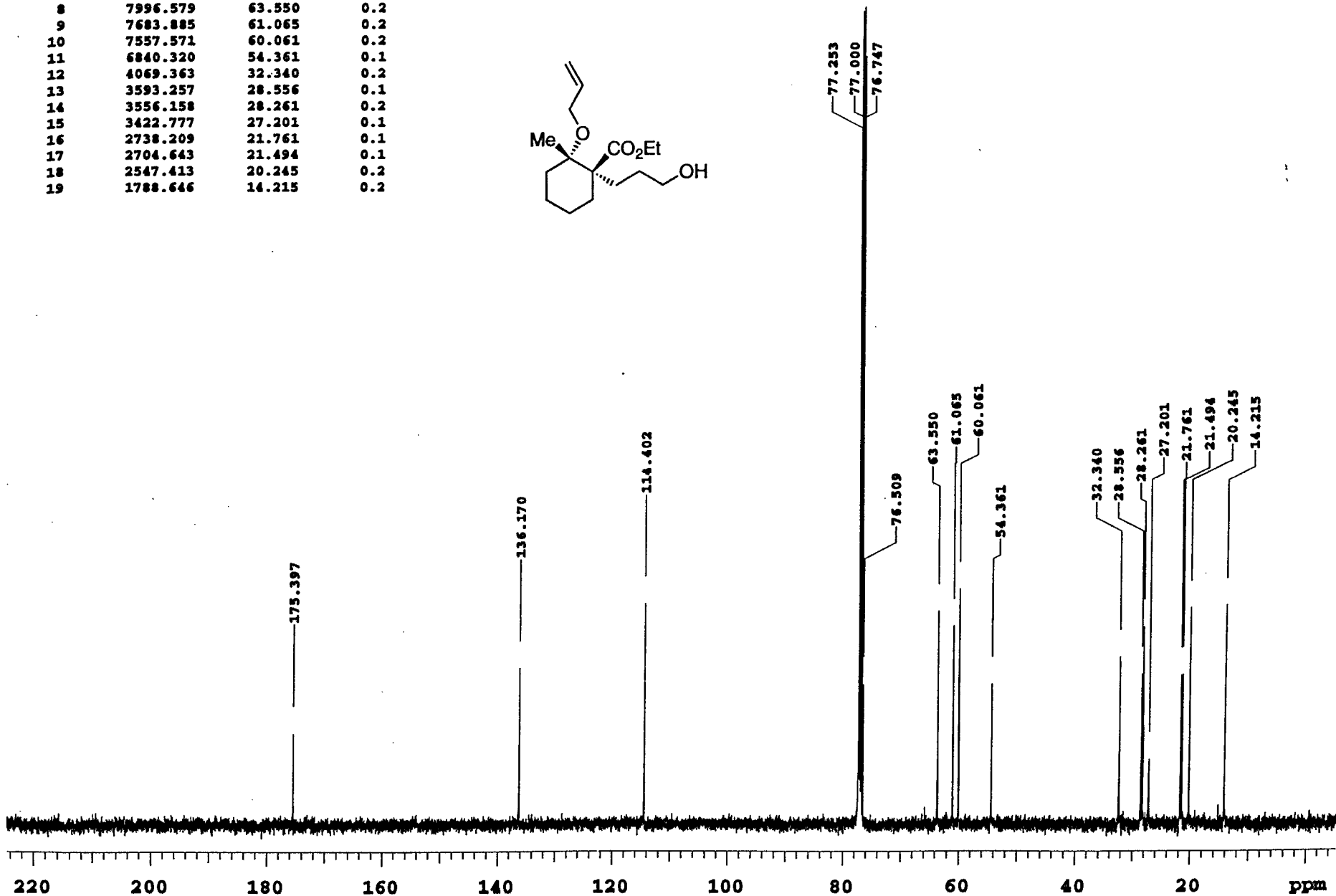
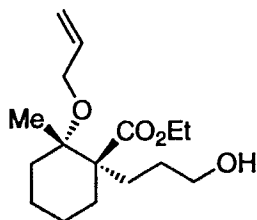
220 200 180 160 140 120 100 80 60 40 20 ppm

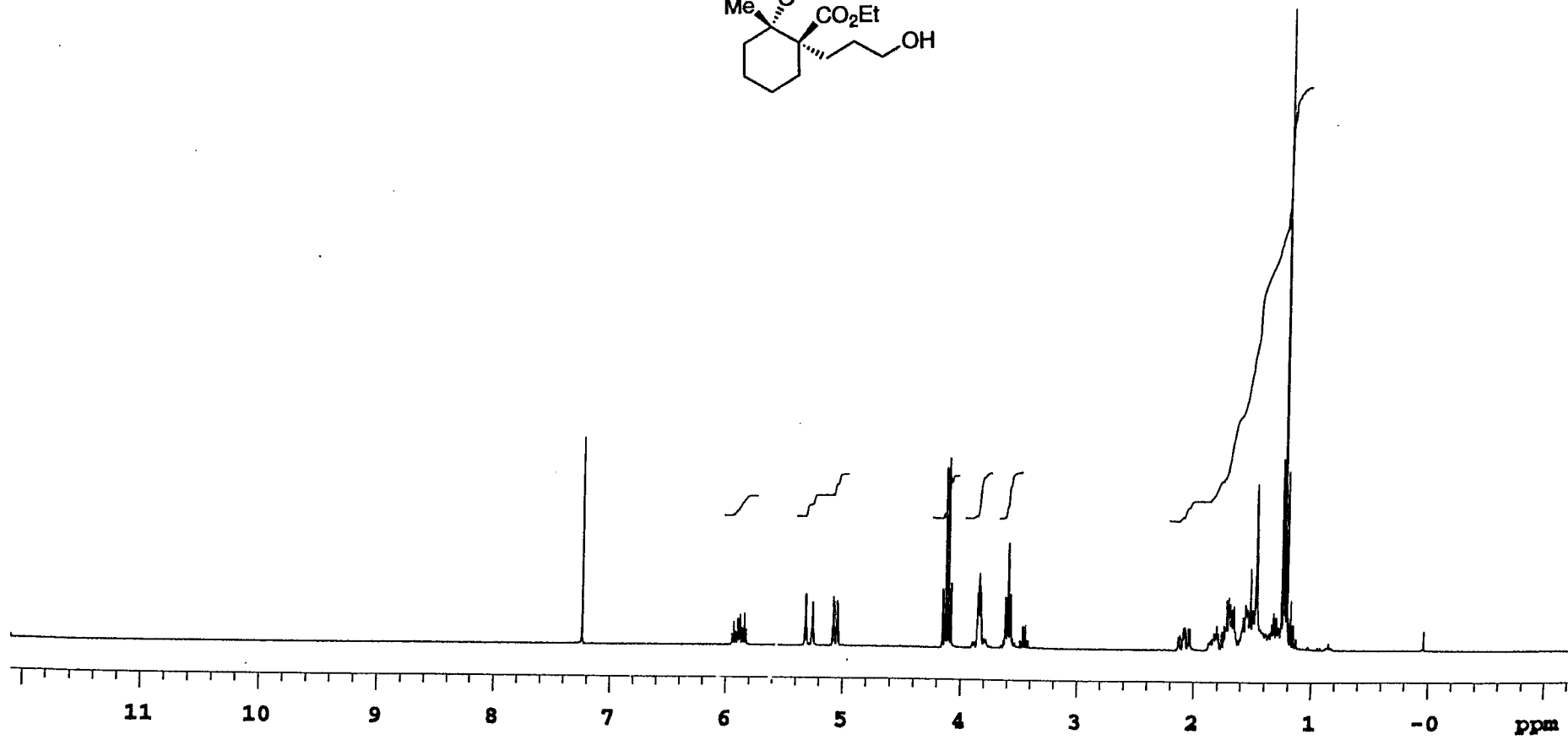
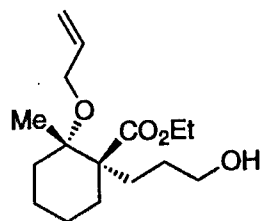
INDEX	FREQUENCY	PPM	HEIGHT
1	17718.409	176.096	0.3
2	7802.800	77.549	0.7
3	7779.548	77.318	5.4
4	7747.576	77.000	5.5
5	7715.605	76.682	5.2
6	6327.012	62.882	0.6
7	6082.138	60.448	0.6
8	4878.836	48.489	0.3
9	4819.979	47.904	0.5
10	3299.140	32.789	0.4
11	3283.154	32.630	0.5
12	3249.729	32.298	0.6
13	3105.130	30.861	0.4
14	3013.574	29.951	0.4
15	2672.058	26.556	0.4
16	2610.294	25.943	3.4
17	2415.557	24.007	0.4
18	2385.038	23.704	0.5
19	1964.319	19.523	0.6
20	1958.506	19.465	0.4
21	1844.425	18.331	0.5
22	1784.114	17.732	0.5
23	1765.949	17.551	0.3
24	1433.878	14.251	0.5
25	-534.566	-5.313	1.2



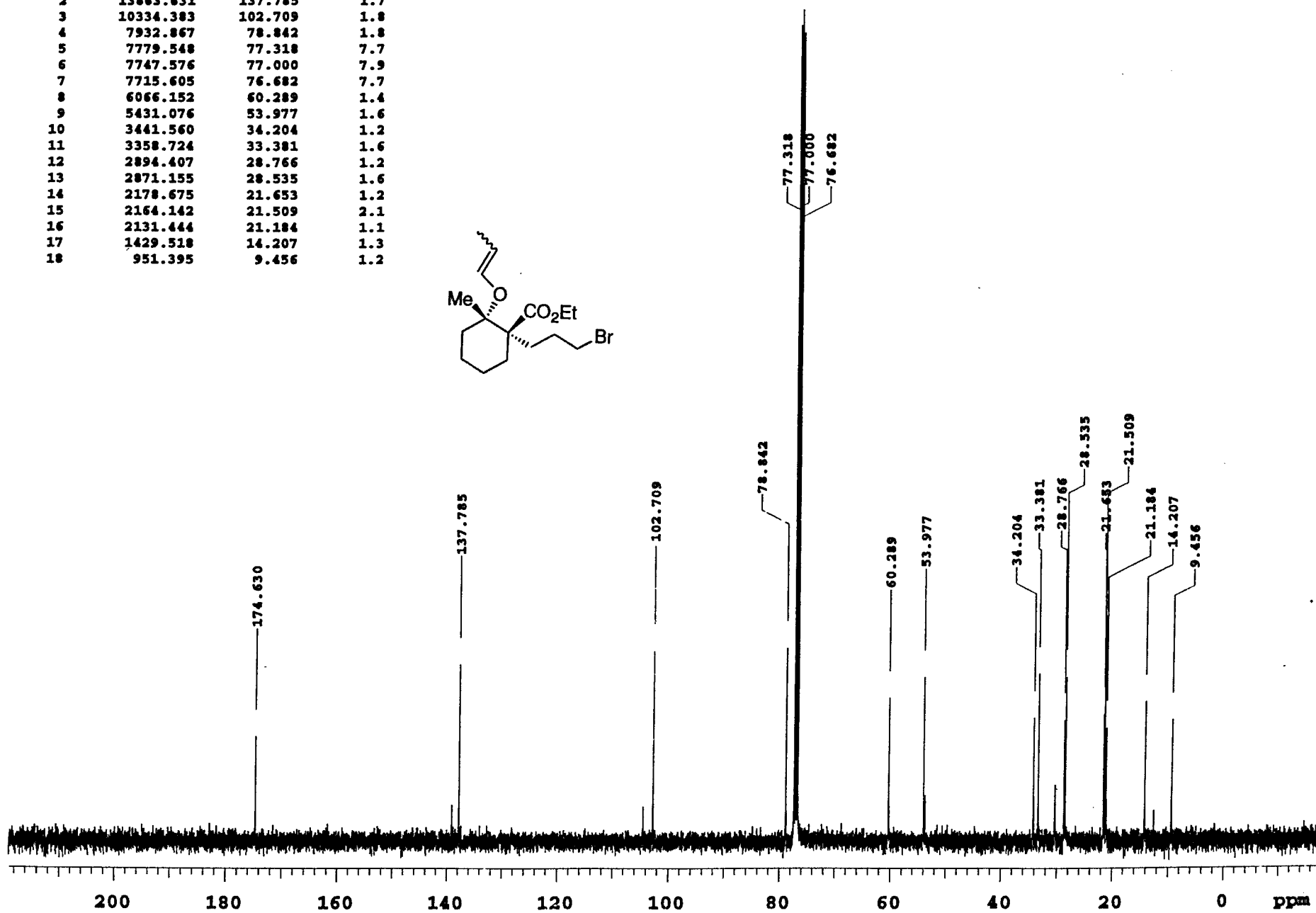
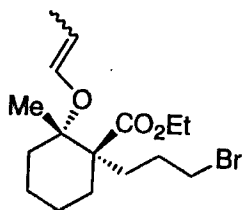


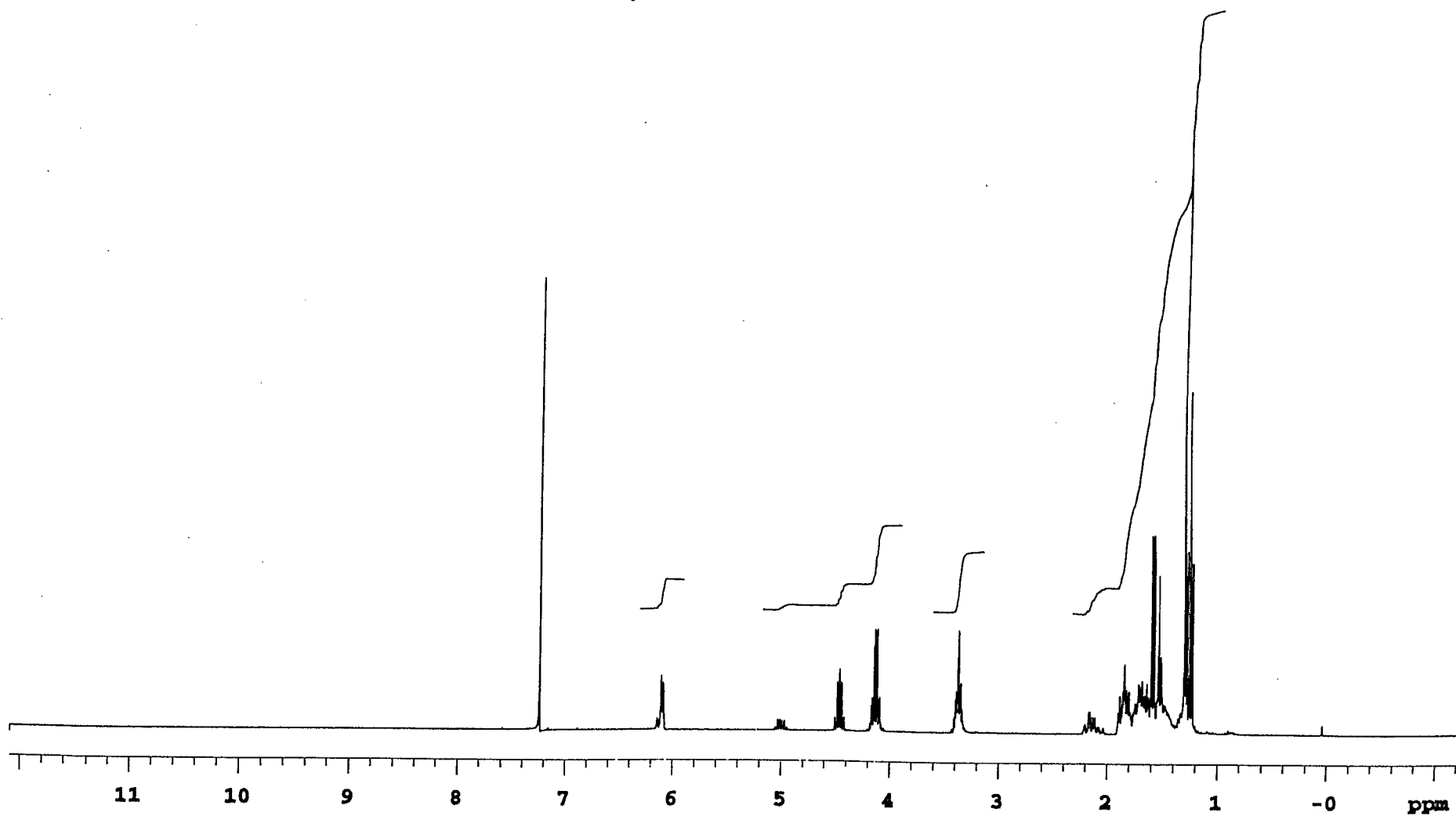
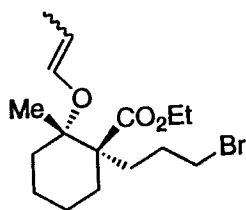
INDEX	FREQUENCY	PPM	HEIGHT
1	22070.426	175.397	0.1
2	17134.465	136.170	0.1
3	14395.308	114.402	0.2
4	9720.808	77.253	0.8
5	9689.009	77.000	0.8
6	9657.210	76.747	0.7
7	9627.177	76.509	0.1
8	7996.579	63.550	0.2
9	7683.885	61.065	0.2
10	7557.571	60.061	0.2
11	6840.320	54.361	0.1
12	4069.363	32.340	0.2
13	3593.257	28.556	0.1
14	3556.158	28.261	0.2
15	3422.777	27.201	0.1
16	2738.209	21.761	0.1
17	2704.643	21.494	0.1
18	2547.413	20.245	0.2
19	1788.646	14.215	0.2





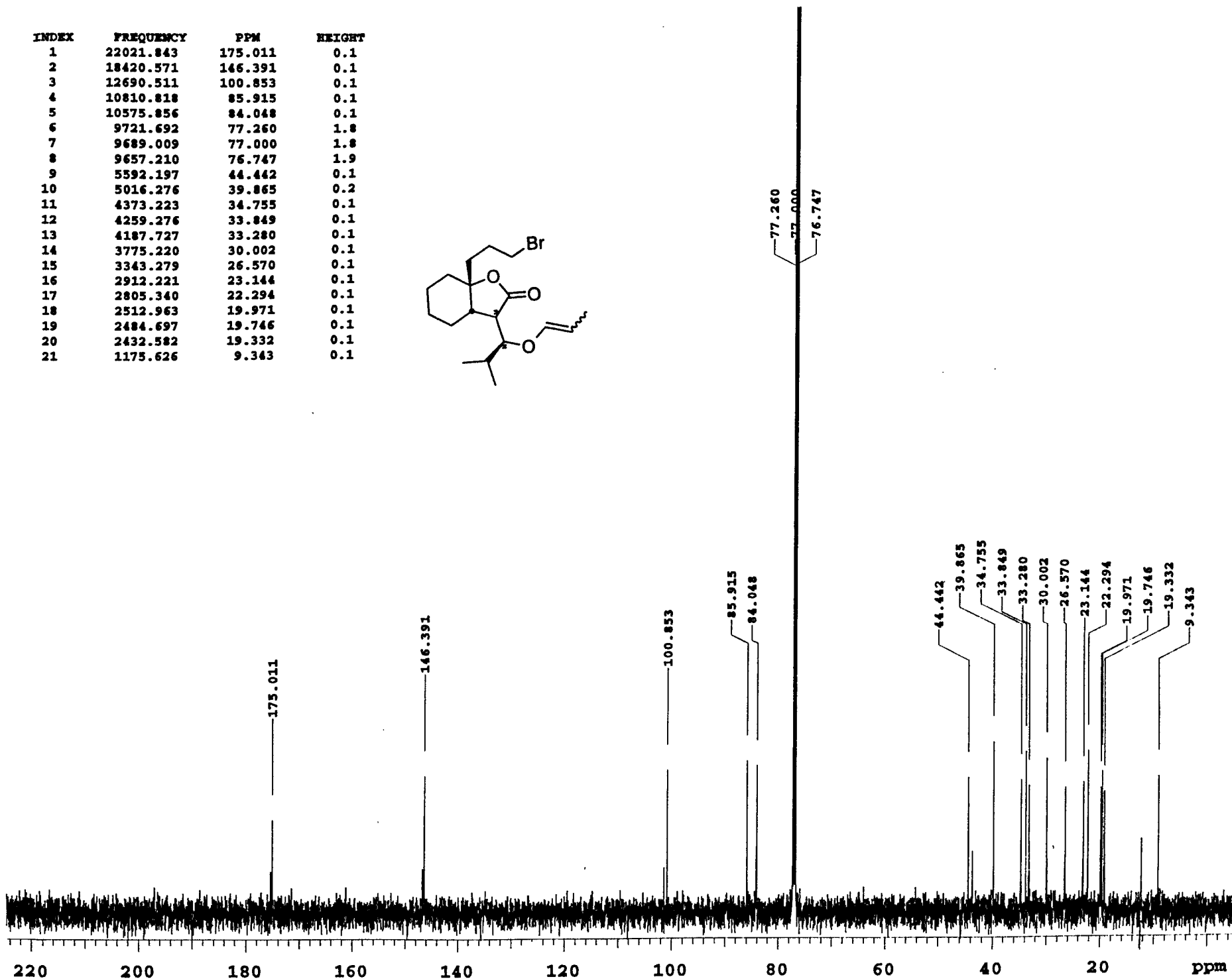
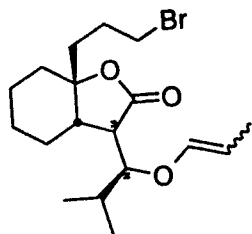
INDEX	FREQUENCY	PPM	HEIGHT
1	17570.903	174.630	1.0
2	13863.631	137.785	1.7
3	10334.383	102.709	1.8
4	7932.867	78.842	1.8
5	7779.548	77.318	7.7
6	7747.576	77.000	7.9
7	7715.605	76.682	7.7
8	6066.152	60.289	1.4
9	5431.076	53.977	1.6
10	3441.560	34.204	1.2
11	3358.724	33.381	1.6
12	2894.407	28.766	1.2
13	2871.155	28.535	1.6
14	2178.675	21.653	1.2
15	2164.142	21.509	2.1
16	2131.444	21.184	1.1
17	1429.518	14.207	1.3
18	951.395	9.456	1.2

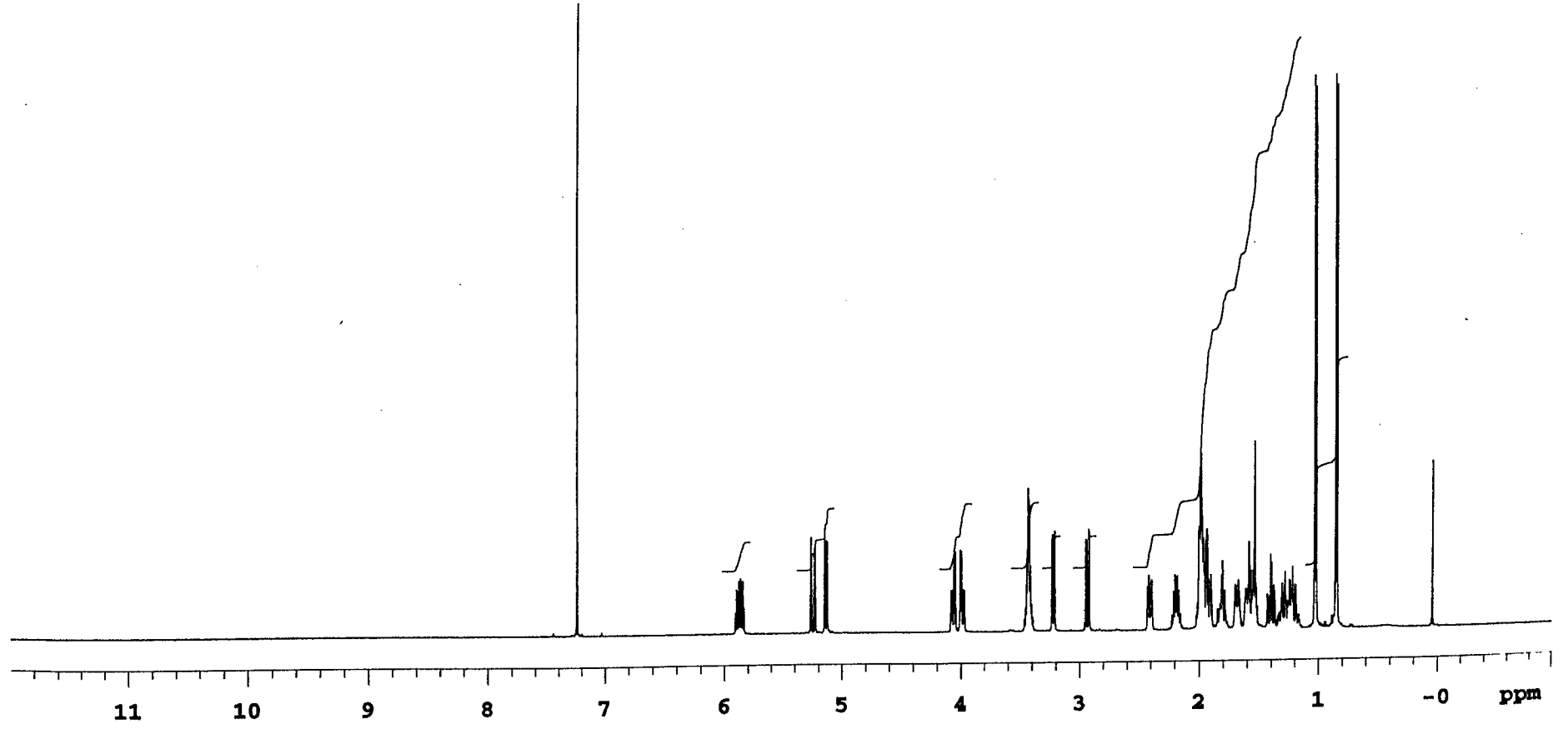
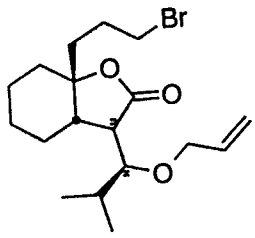




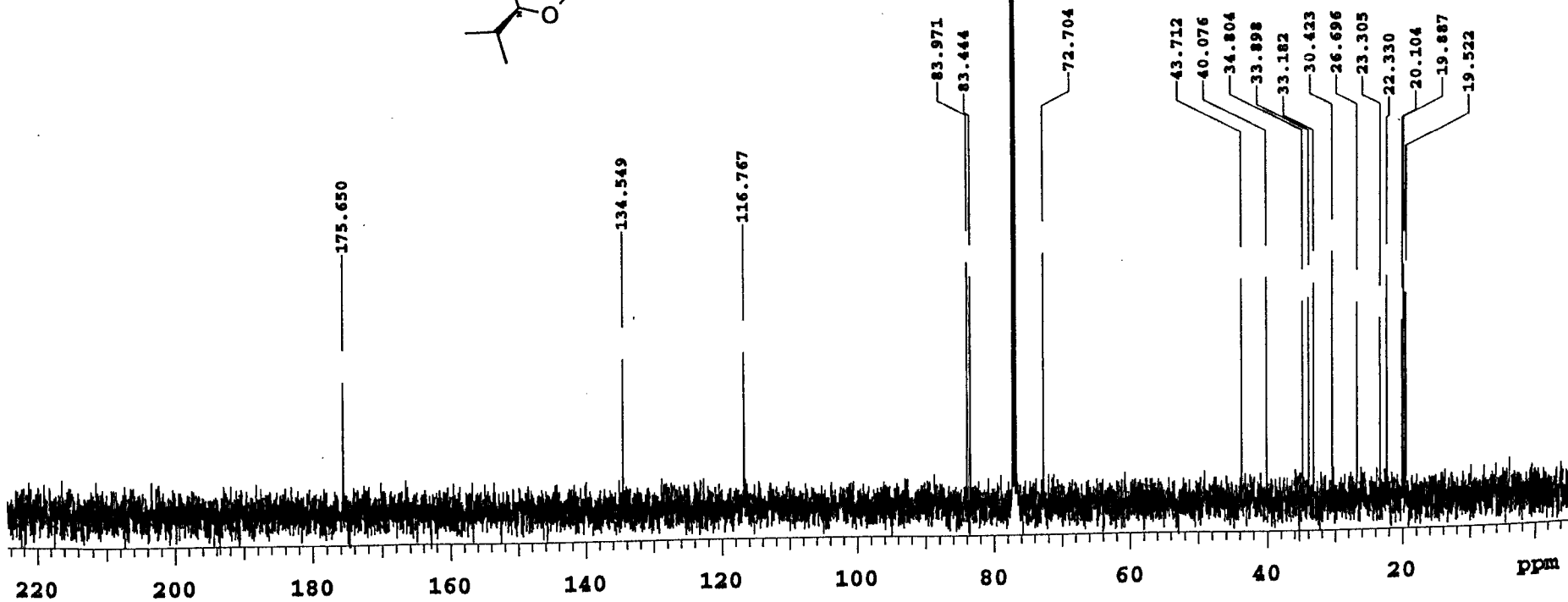
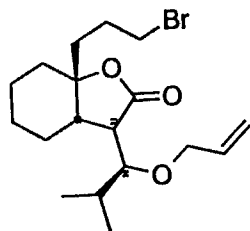
152

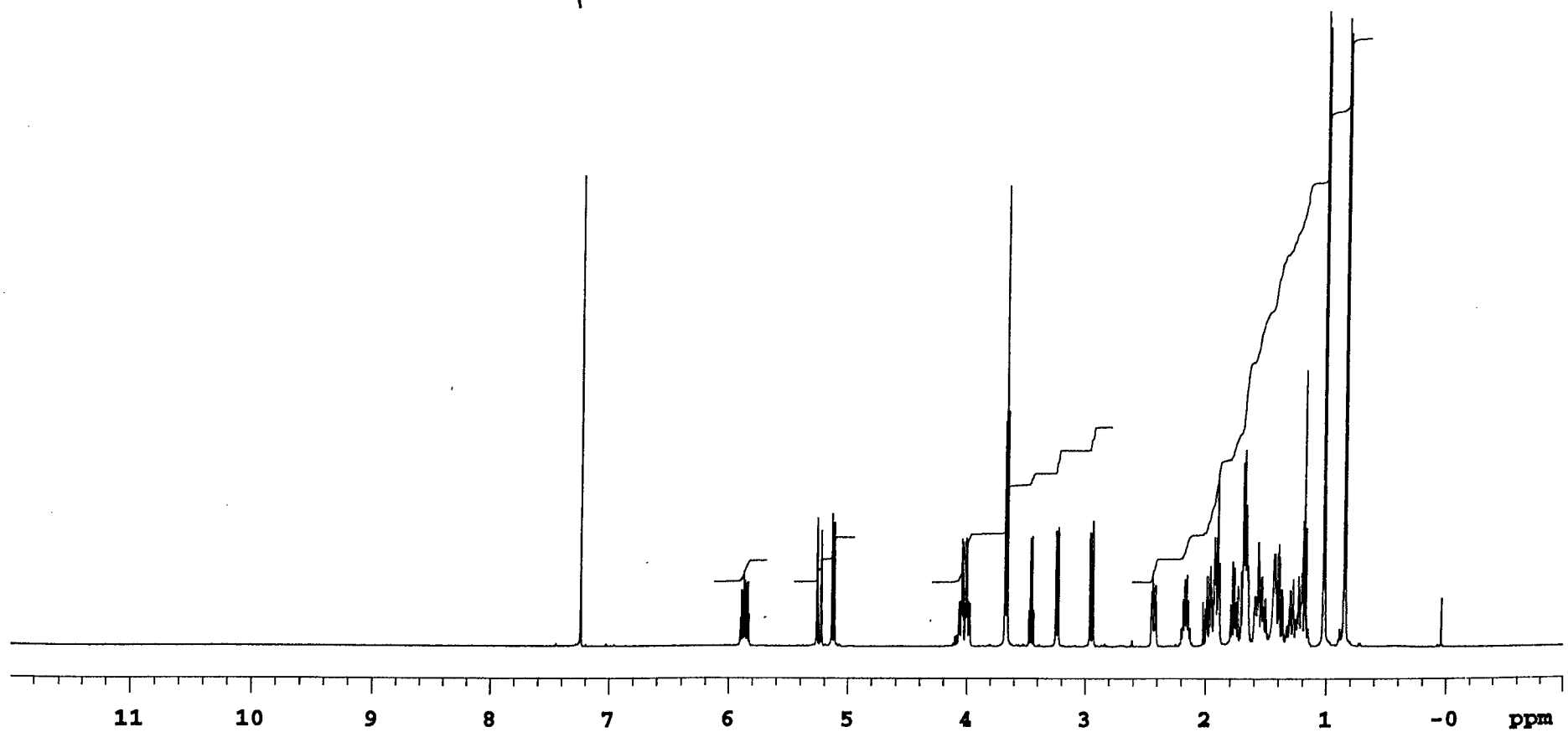
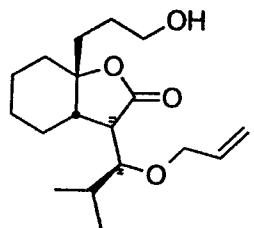
INDEX	FREQUENCY	PPM	HEIGHT
1	22021.843	175.011	0.1
2	18420.571	146.391	0.1
3	12690.511	100.853	0.1
4	10810.818	85.915	0.1
5	10575.856	84.048	0.1
6	9721.692	77.260	1.8
7	9689.009	77.000	1.8
8	9657.210	76.747	1.9
9	5592.197	44.442	0.1
10	5016.276	39.865	0.2
11	4373.223	34.755	0.1
12	4259.276	33.849	0.1
13	4187.727	33.280	0.1
14	3775.220	30.002	0.1
15	3343.279	26.570	0.1
16	2912.221	23.144	0.1
17	2805.340	22.294	0.1
18	2512.963	19.971	0.1
19	2484.697	19.746	0.1
20	2432.582	19.332	0.1
21	1175.626	9.343	0.1



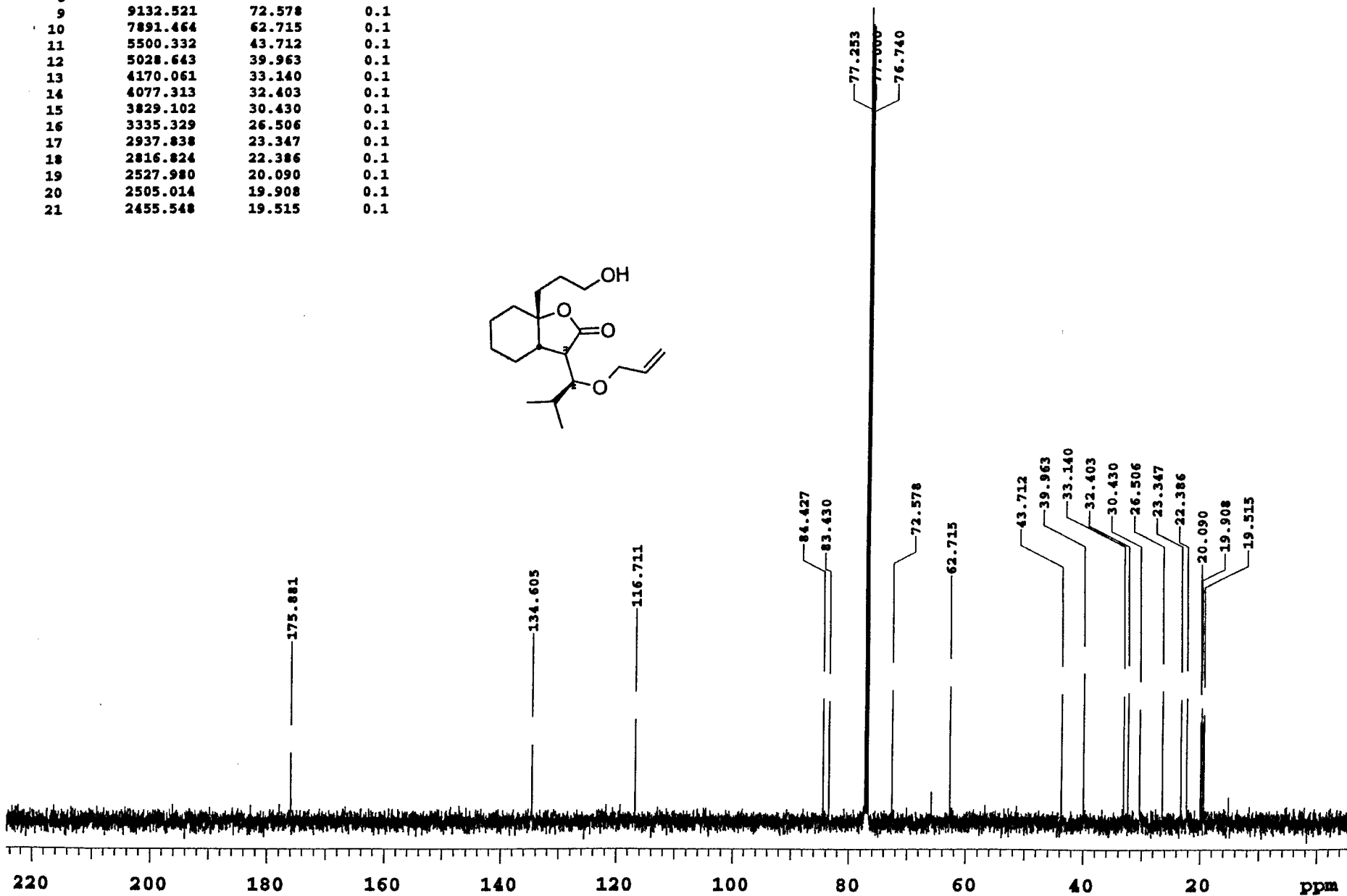
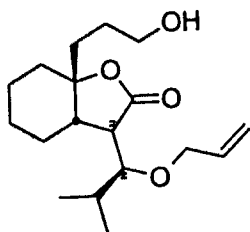


INDEX	FREQUENCY	PPM	HEIGHT
1	22102.225	175.650	0.1
2	16930.420	134.549	0.1
3	14692.984	116.767	0.1
4	10566.140	83.971	0.1
5	10499.891	83.444	0.1
6	9720.808	77.253	0.8
7	9689.009	77.000	0.8
8	9656.326	76.740	0.8
9	9148.421	72.704	0.1
10	5500.332	43.712	0.1
11	5042.776	40.076	0.1
12	4379.407	34.804	0.1
13	4265.459	33.898	0.1
14	4175.361	33.182	0.1
15	3828.218	30.423	0.1
16	3359.179	26.696	0.1
17	2932.538	23.305	0.1
18	2809.757	22.330	0.1
19	2529.746	20.104	0.1
20	2502.364	19.887	0.1
21	2456.431	19.522	0.1

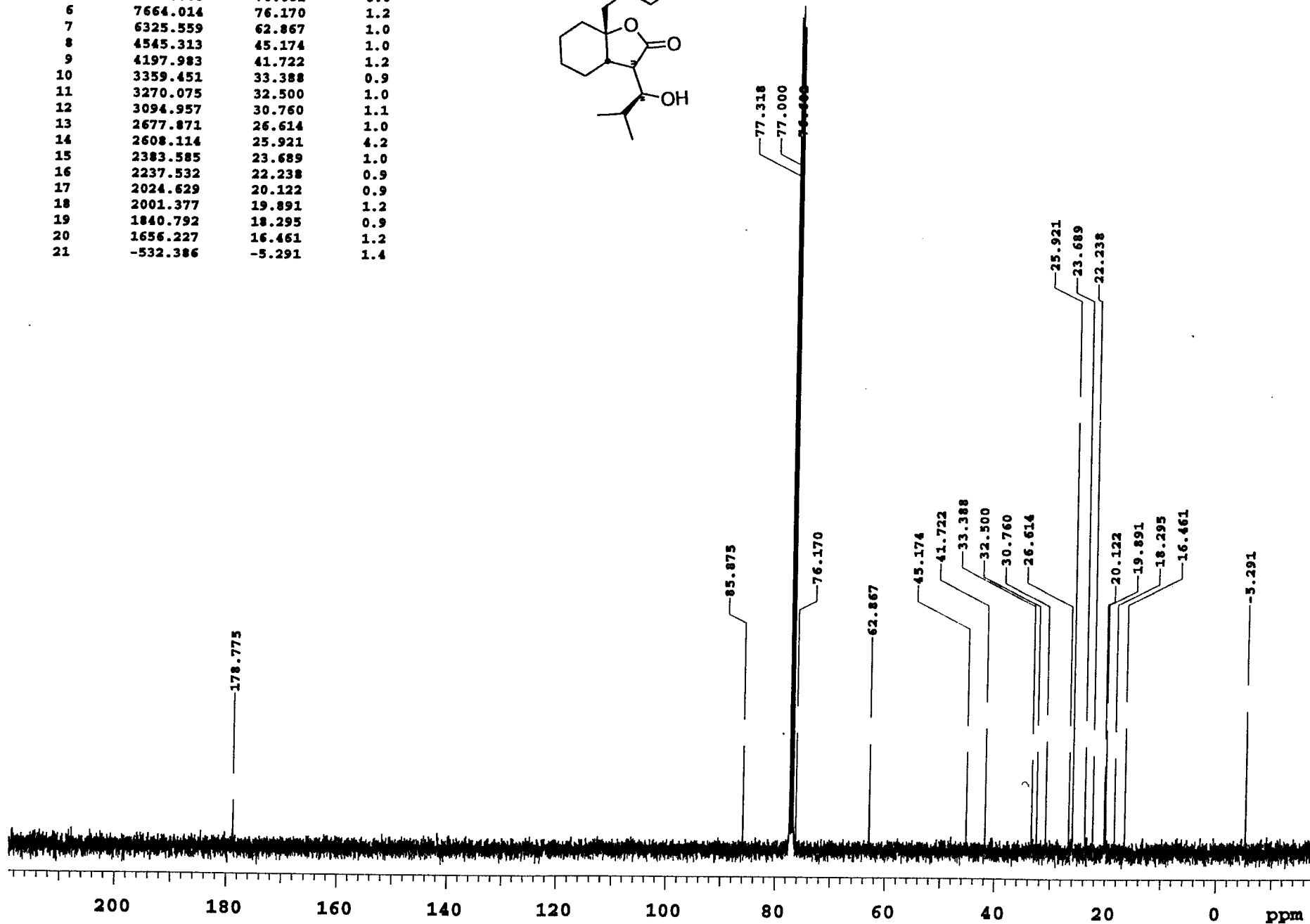
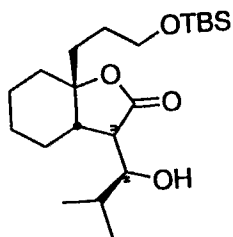


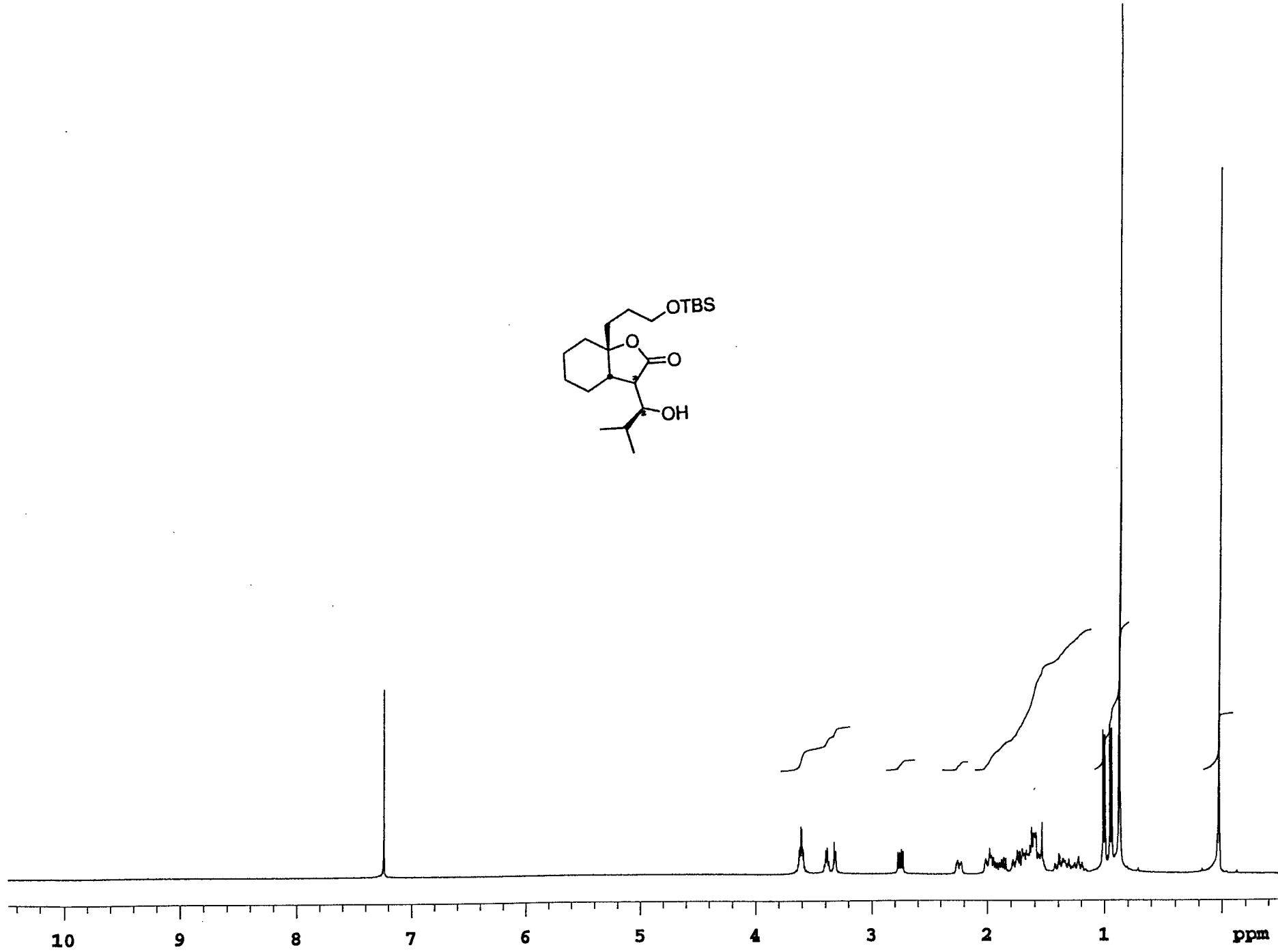
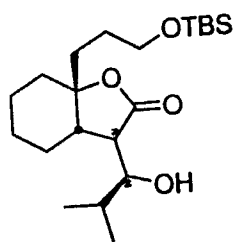


INDEX	FREQUENCY	PPM	HEIGHT
1	22131.374	175.881	0.0
2	16937.486	134.605	0.1
3	14685.918	116.711	0.1
4	10623.555	84.427	0.1
5	10498.125	83.430	0.1
6	9720.808	77.253	0.6
7	9689.009	77.000	0.5
8	9656.326	76.740	0.5
9	9132.521	72.578	0.1
10	7891.464	62.715	0.1
11	5500.332	43.712	0.1
12	5028.643	39.963	0.1
13	4170.061	33.140	0.1
14	4077.313	32.403	0.1
15	3829.102	30.430	0.1
16	3335.329	26.506	0.1
17	2937.838	23.347	0.1
18	2816.824	22.386	0.1
19	2527.980	20.090	0.1
20	2505.014	19.908	0.1
21	2455.548	19.515	0.1

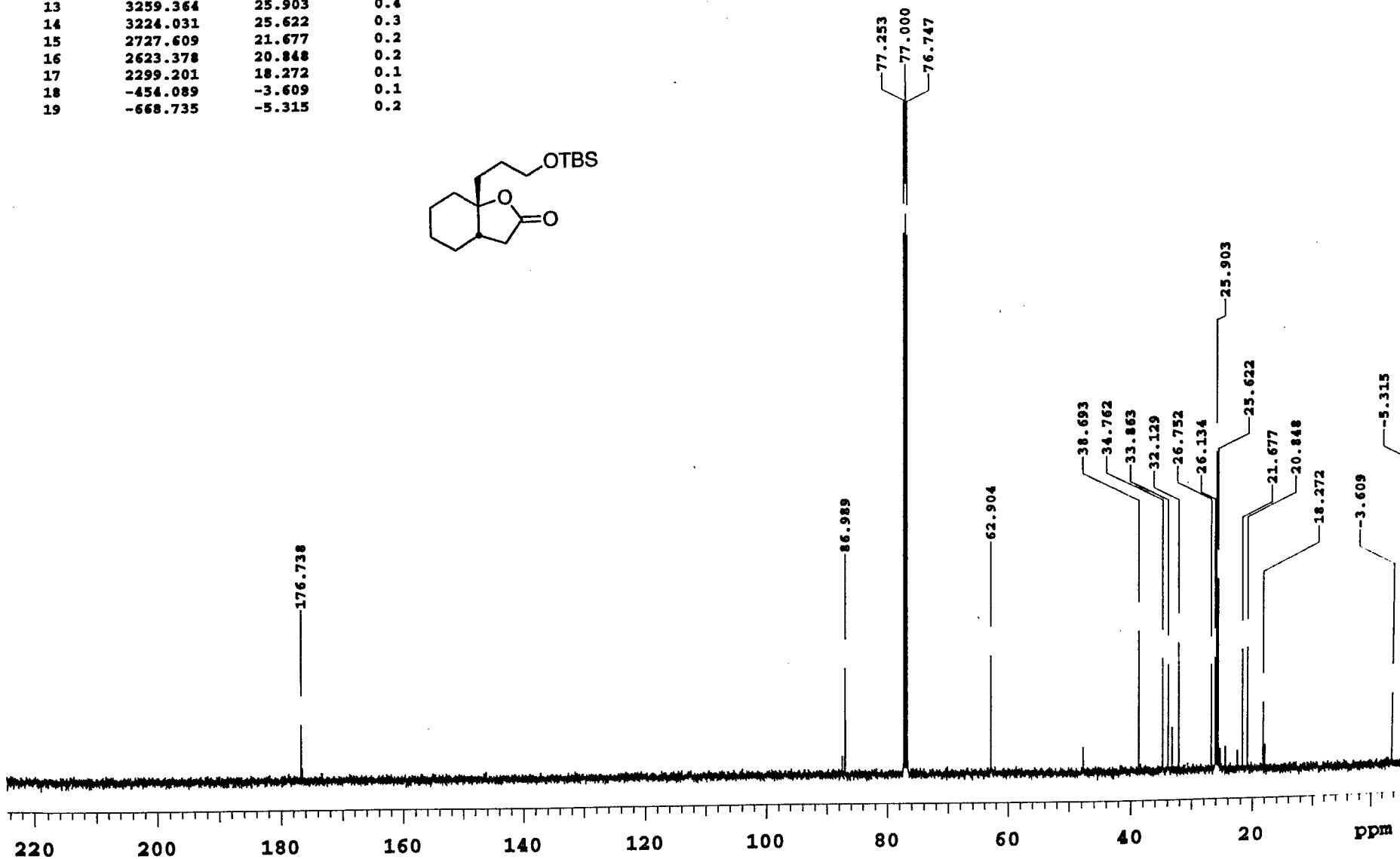
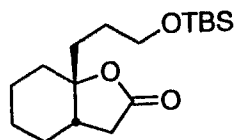


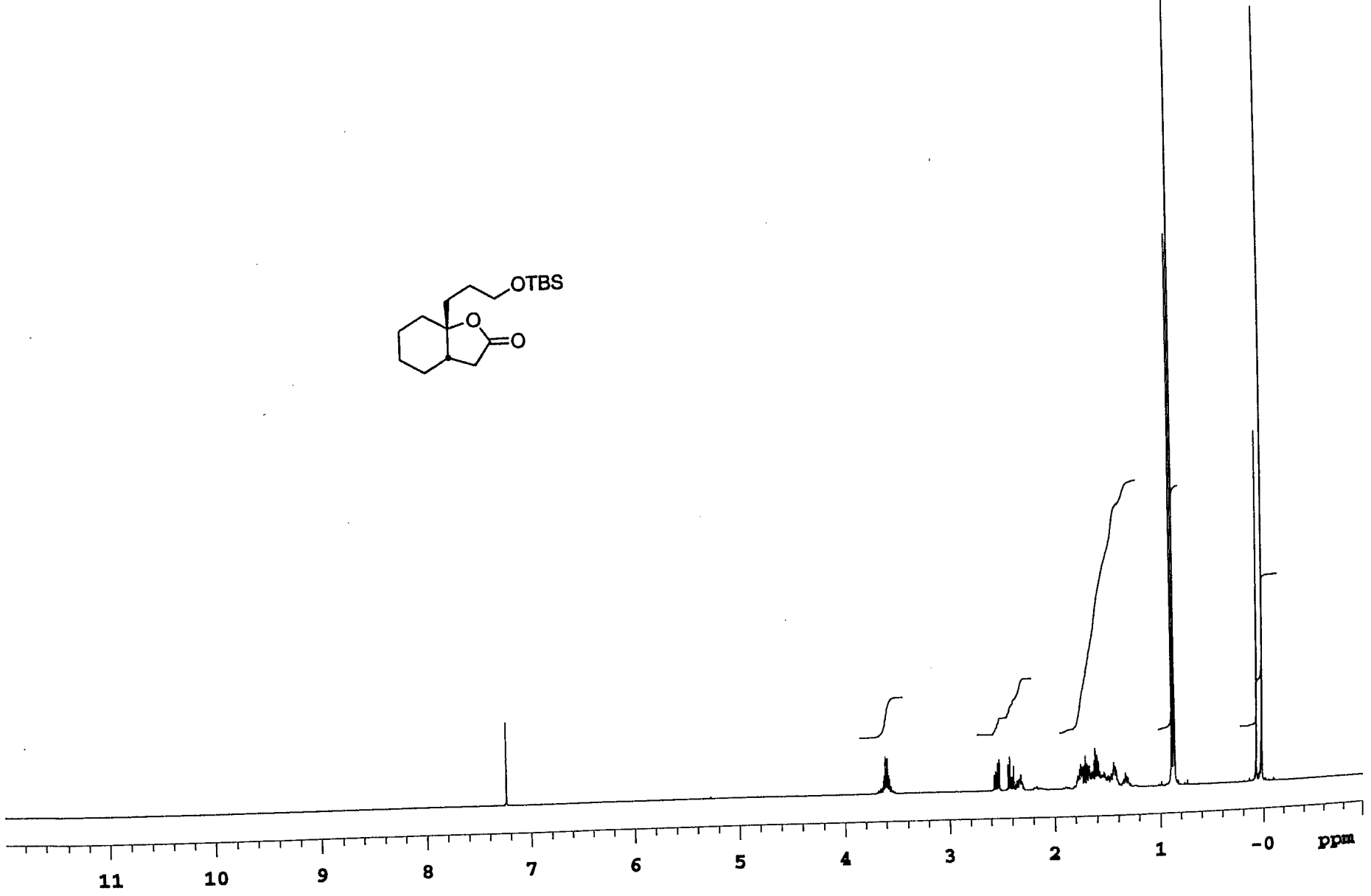
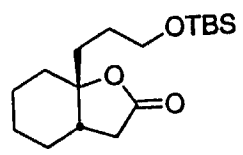
INDEX	FREQUENCY	PPM	HEIGHT
1	17987.989	178.775	0.5
2	8640.606	85.875	1.0
3	7779.548	77.318	8.1
4	7747.576	77.000	8.2
5	7715.605	76.682	8.0
6	7664.014	76.170	1.2
7	6325.559	62.867	1.0
8	4545.313	45.174	1.0
9	4197.983	41.722	1.2
10	3359.451	33.388	0.9
11	3270.075	32.500	1.0
12	3094.957	30.760	1.1
13	2677.871	26.614	1.0
14	2608.114	25.921	4.2
15	2383.585	23.689	1.0
16	2237.532	22.238	0.9
17	2024.629	20.122	0.9
18	2001.377	19.891	1.2
19	1840.792	18.295	0.9
20	1656.227	16.461	1.2
21	-532.386	-5.291	1.4

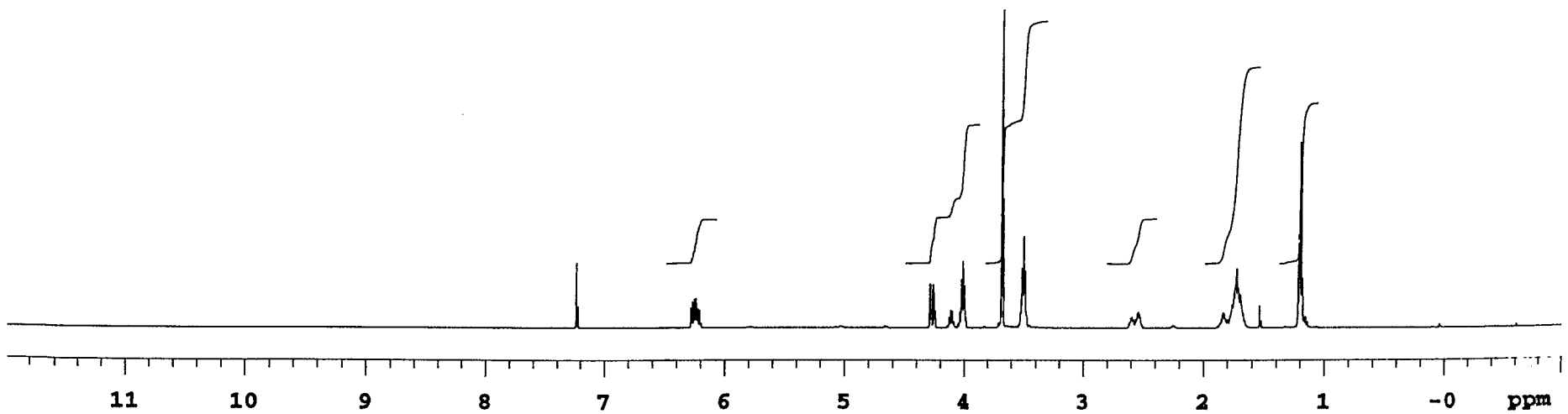
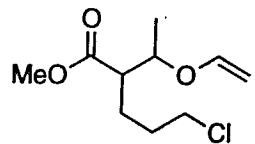




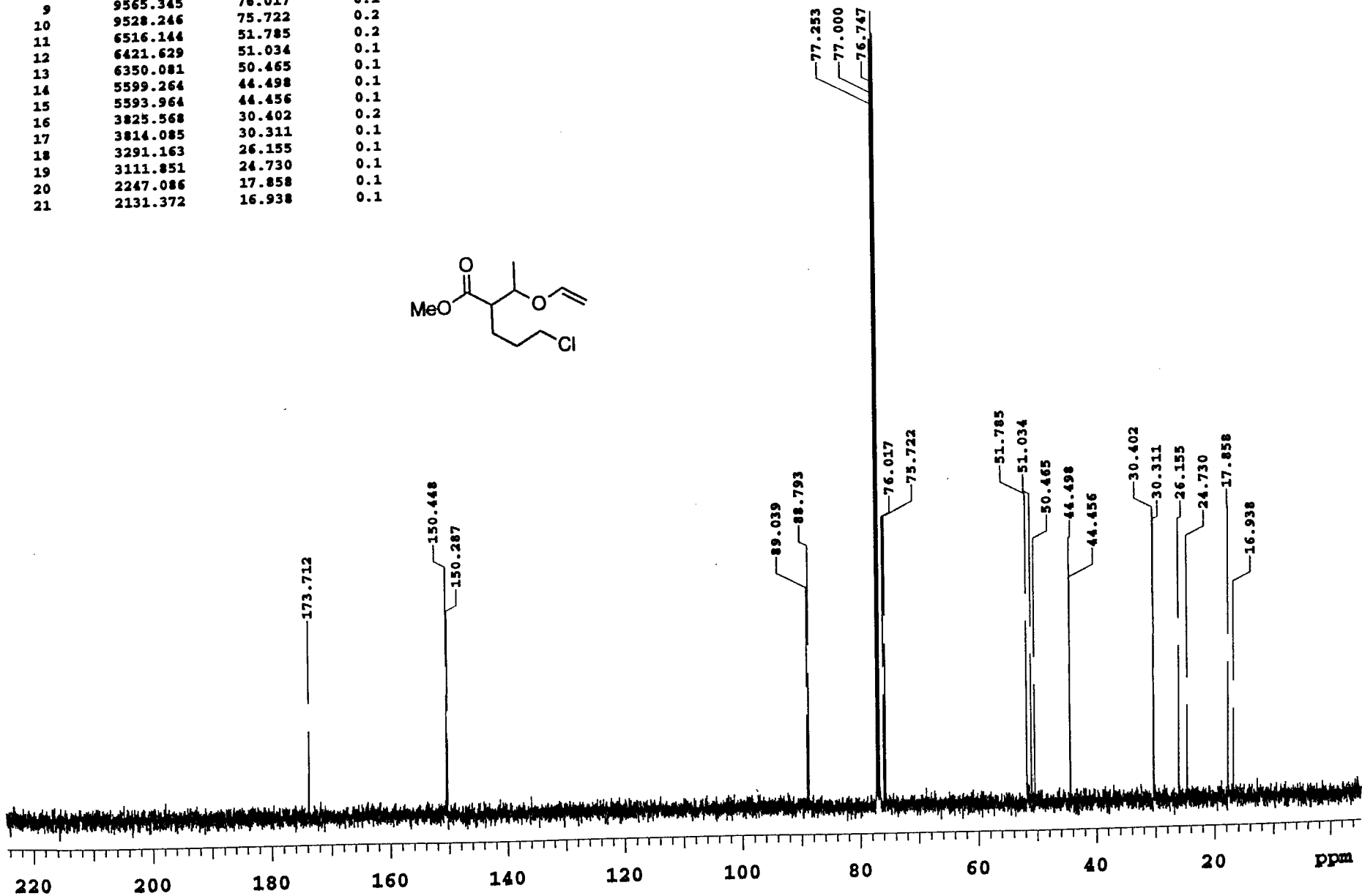
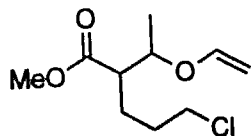
INDEX	FREQUENCY	PPM	HEIGHT
1	22239.139	176.738	0.1
2	10945.965	86.989	0.1
3	9720.808	77.253	0.8
4	9689.009	77.000	0.8
5	9657.210	76.747	0.7
6	7915.314	62.904	0.2
7	4868.763	38.693	0.2
8	4374.107	34.762	0.2
9	4261.042	33.863	0.1
10	4042.864	32.129	0.2
11	3366.245	26.752	0.1
12	3288.513	26.134	0.2
13	3259.364	25.903	0.4
14	3224.031	25.622	0.3
15	2727.609	21.677	0.2
16	2623.378	20.848	0.2
17	2299.201	18.272	0.1
18	-454.089	-3.609	0.1
19	-668.735	-5.315	0.2



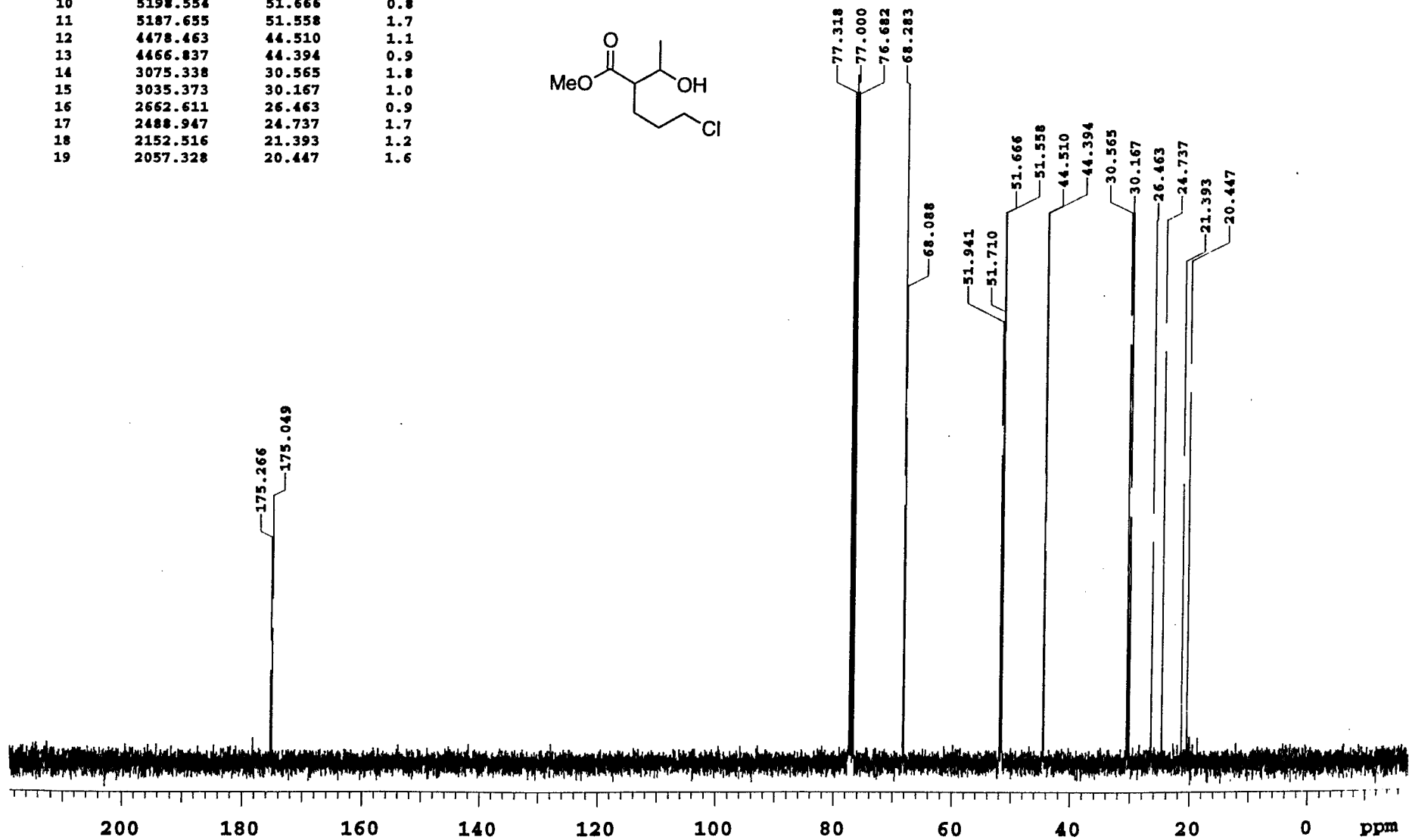
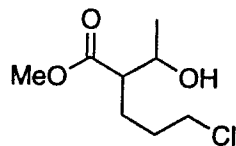


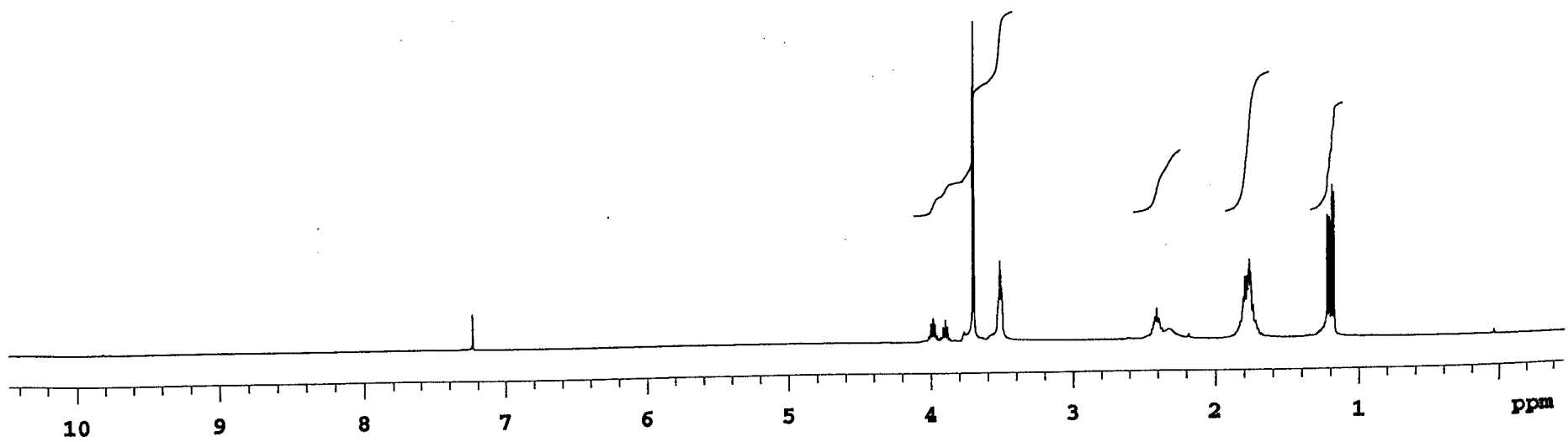
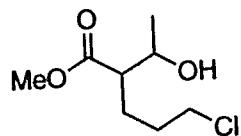


	FREQUENCY	PPM	HEIGHT
2	21858.430	173.712	0.1
3	18931.127	150.448	0.1
4	18910.810	150.287	0.1
5	11203.893	89.039	0.1
6	11172.977	88.793	0.1
7	9720.808	77.253	0.7
8	9689.009	77.000	0.7
9	9657.210	76.747	0.7
10	9565.345	76.017	0.1
11	9528.246	75.722	0.2
12	6516.144	51.785	0.2
13	6421.629	51.034	0.1
14	6350.081	50.465	0.1
15	5599.264	44.498	0.1
16	5593.964	44.456	0.1
17	3825.568	30.402	0.2
18	3814.085	30.311	0.1
19	3291.163	26.155	0.1
20	3111.851	24.730	0.1
21	2247.086	17.858	0.1
	2131.372	16.938	0.1

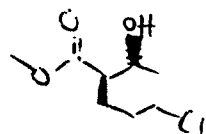


INDEX	FREQUENCY	PPM	HEIGHT
1	17634.847	175.266	0.4
2	17613.048	175.049	0.6
3	7779.548	77.318	2.8
4	7747.576	77.000	2.9
5	7715.605	76.682	2.8
6	6870.532	68.283	1.1
7	6850.913	68.088	1.5
8	5226.166	51.941	1.3
9	5202.914	51.710	1.4
10	5198.554	51.666	0.8
11	5187.655	51.558	1.7
12	4478.463	44.510	1.1
13	4466.837	44.394	0.9
14	3075.338	30.565	1.8
15	3035.373	30.167	1.0
16	2662.611	26.463	0.9
17	2488.947	24.737	1.7
18	2152.516	21.393	1.2
19	2057.328	20.447	1.6

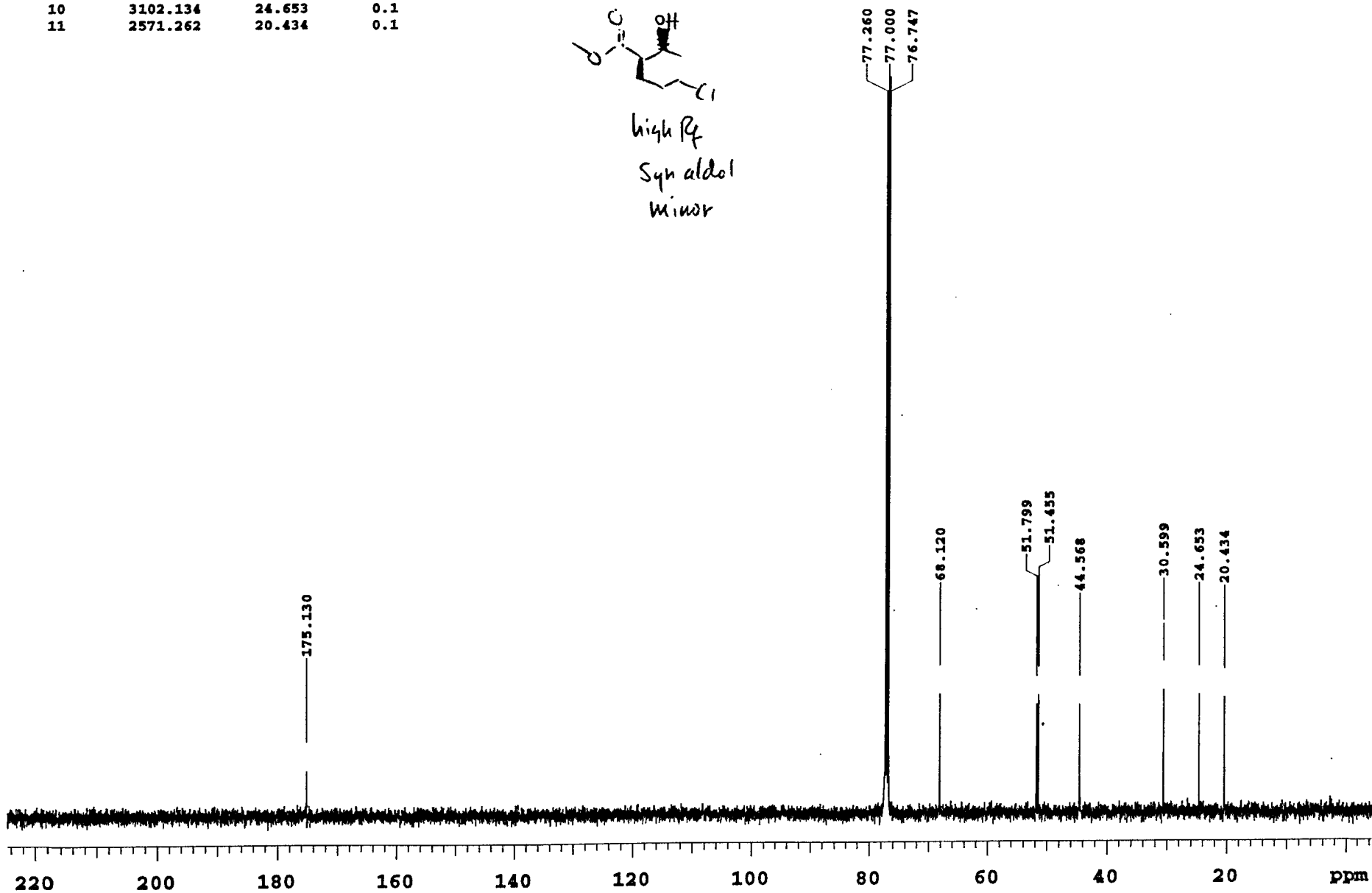




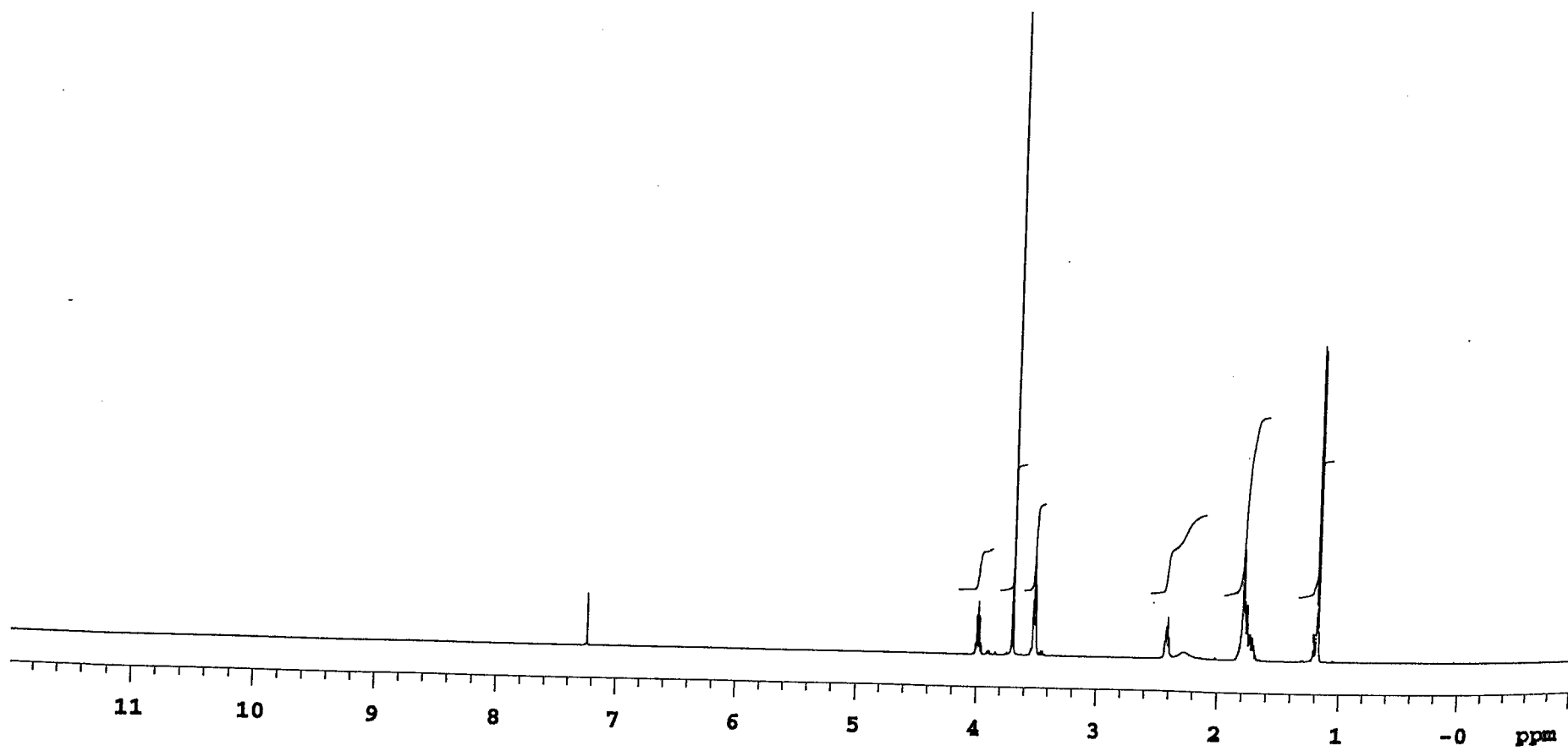
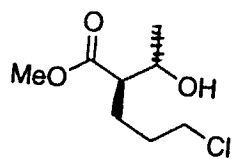
INDEX	FREQUENCY	PPM	HEIGHT
1	22036.860	175.130	0.0
2	9721.692	77.260	0.4
3	9689.009	77.000	0.4
4	9657.210	76.747	0.4
5	8571.616	68.120	0.1
6	6517.911	51.799	0.1
7	6474.628	51.455	0.1
8	5608.097	44.568	0.1
9	3850.301	30.599	0.1
10	3102.134	24.653	0.1
11	2571.262	20.434	0.1

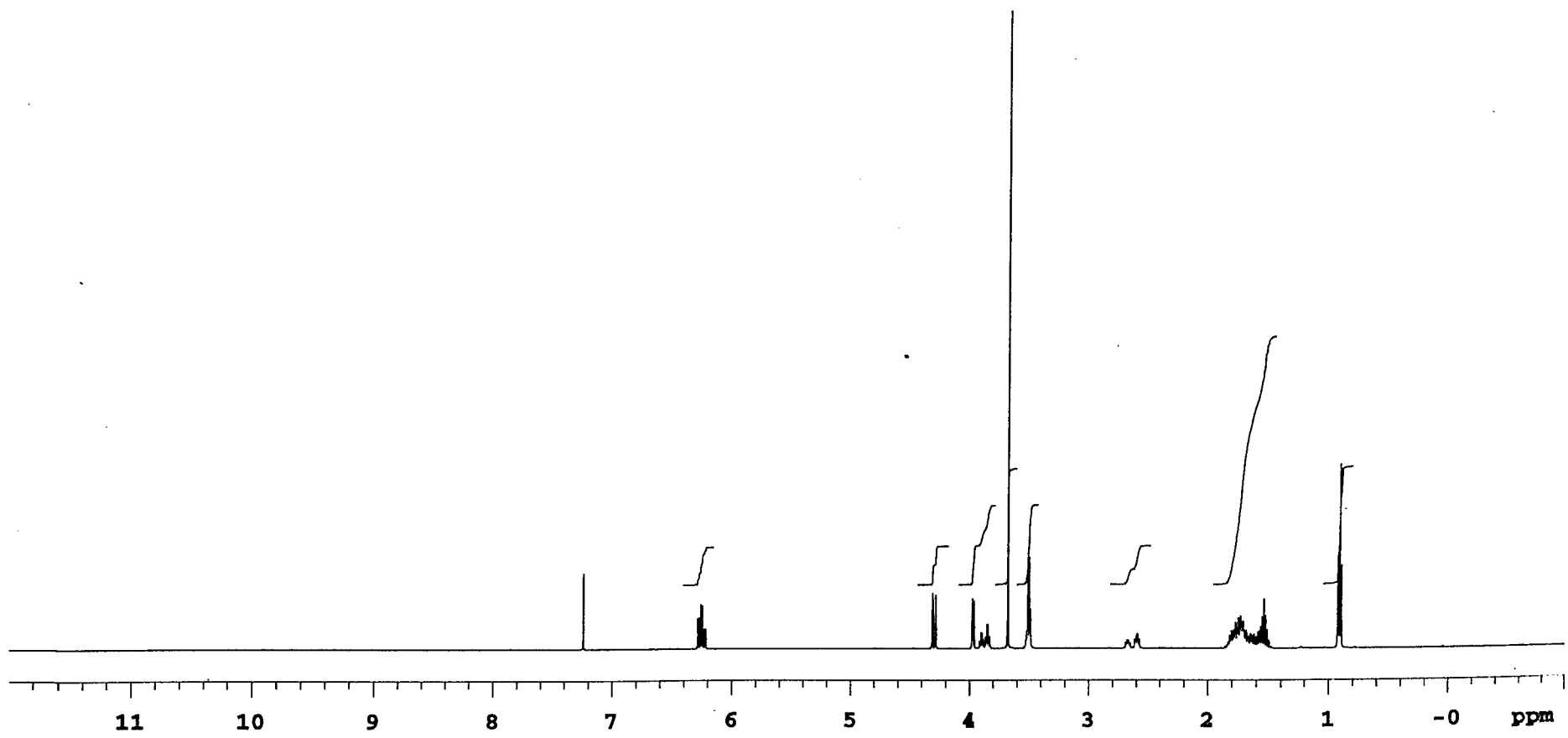
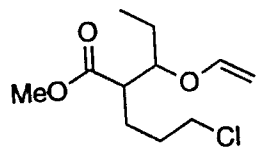


high R_f
Syn aldol
minor



H₂H R_f





INDEX	FREQUENCY	PPM	HEIGHT
1	21875.213	173.846	0.2
2	21873.447	173.832	0.1
3	19103.373	151.817	0.2
4	19056.557	151.445	0.1
5	11168.560	88.758	0.2
6	11136.761	88.506	0.3
7	10286.129	81.745	0.2
8	10279.946	81.696	0.3
9	9720.808	77.253	1.9
10	9689.009	77.000	2.0
11	9657.210	76.747	1.9
12	6515.261	51.778	0.3
13	6191.084	49.201	0.3
14	6086.853	48.373	0.2
15	5602.797	44.526	0.3
16	5593.964	44.456	0.2
17	3839.702	30.515	0.3
18	3822.035	30.374	0.2
19	3248.764	25.818	0.3
20	3228.448	25.657	0.2
21	3117.150	24.772	0.2
22	3037.652	24.141	0.2
23	1182.692	9.399	0.2
24	1154.426	9.174	0.1

