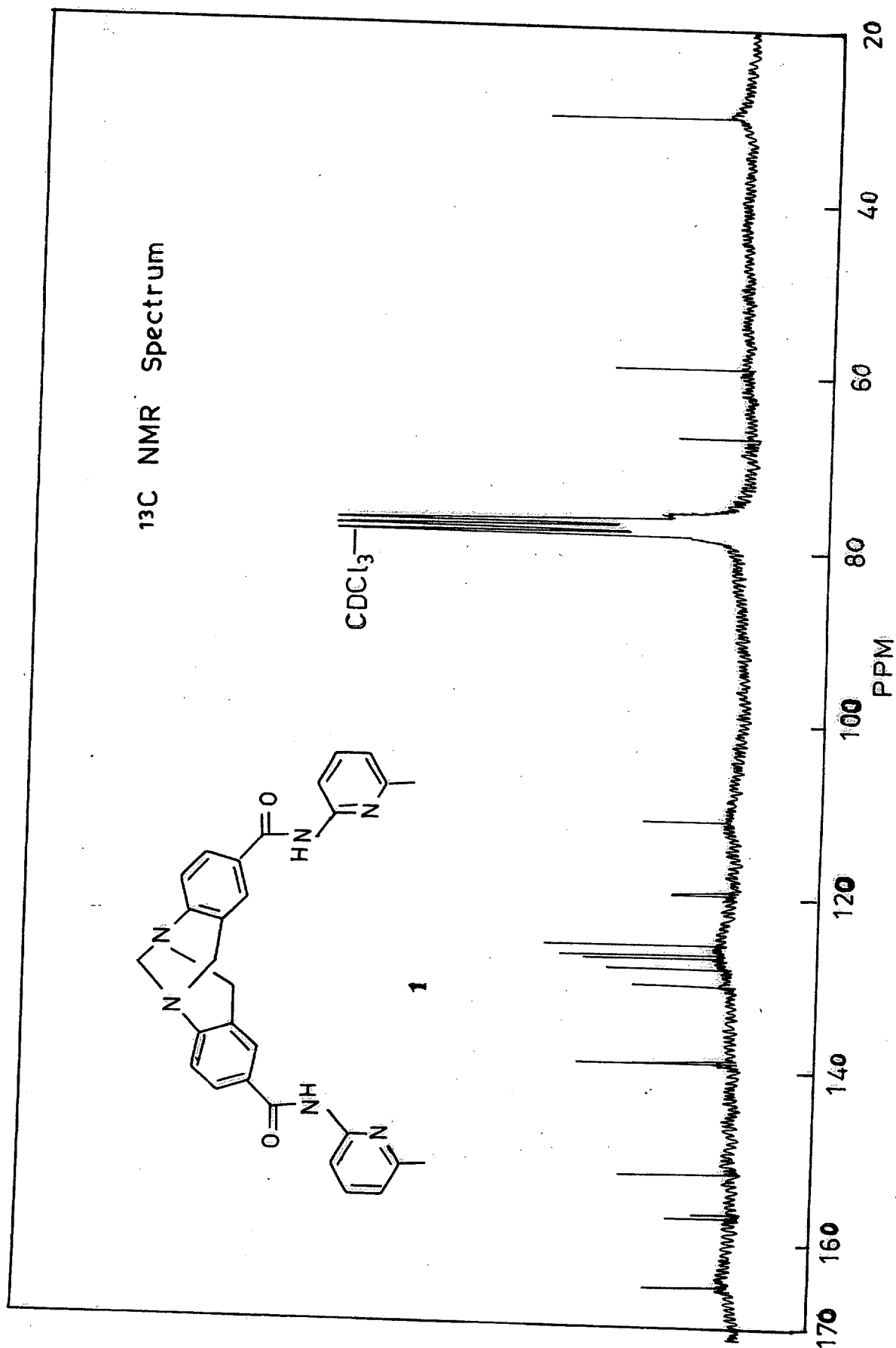


8.45813
8.15061
8.10916
7.76226
7.72046
7.71091
7.65523
7.61641
7.57418
7.26044
7.21972
6.92423
6.66686

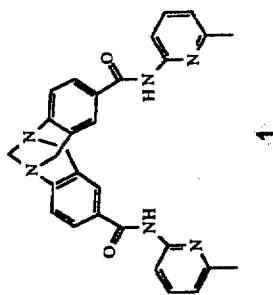
4.82901
4.74563
4.35350
4.25437

2.49957
2.45494
1.64131
1.25309
.87747

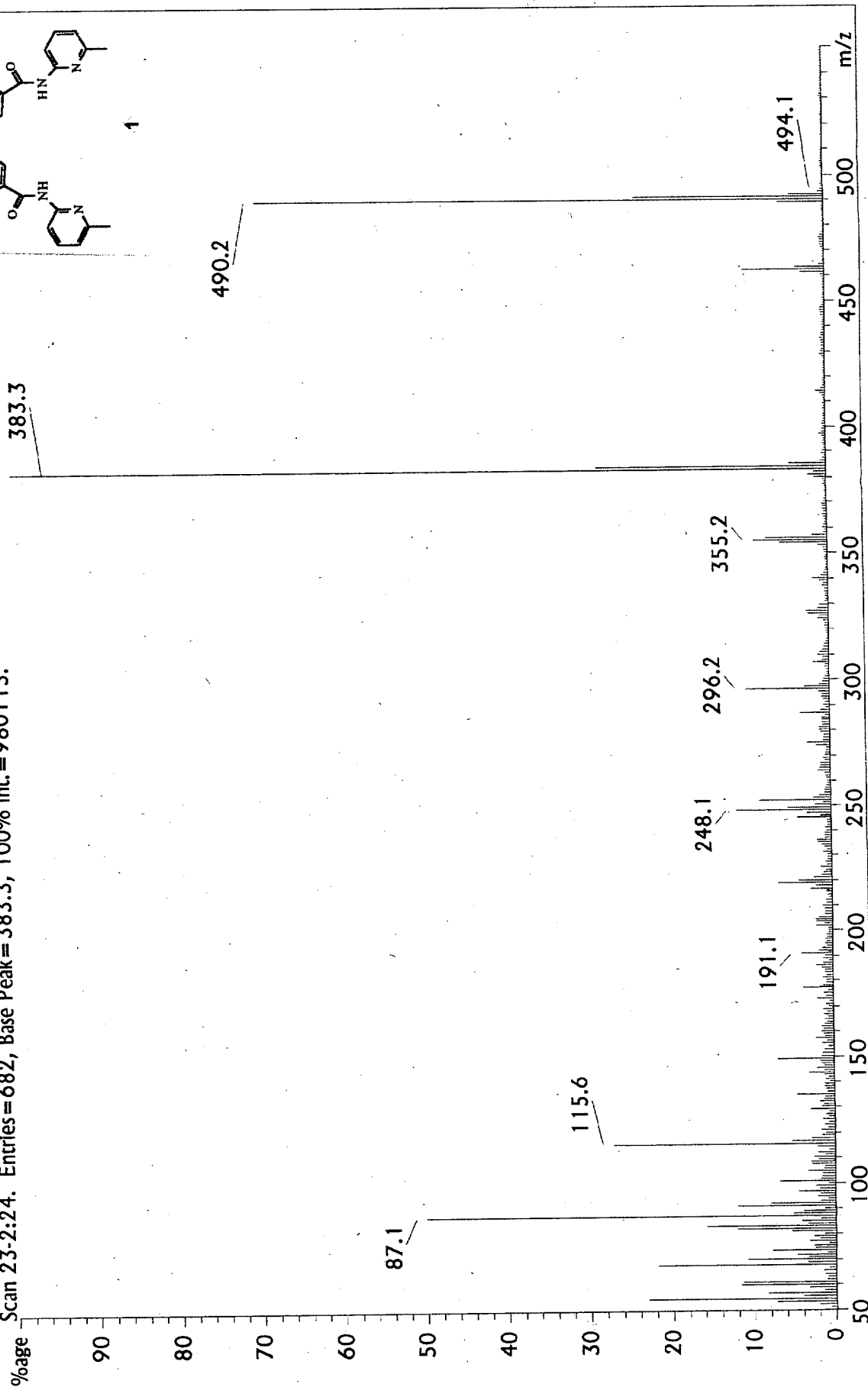


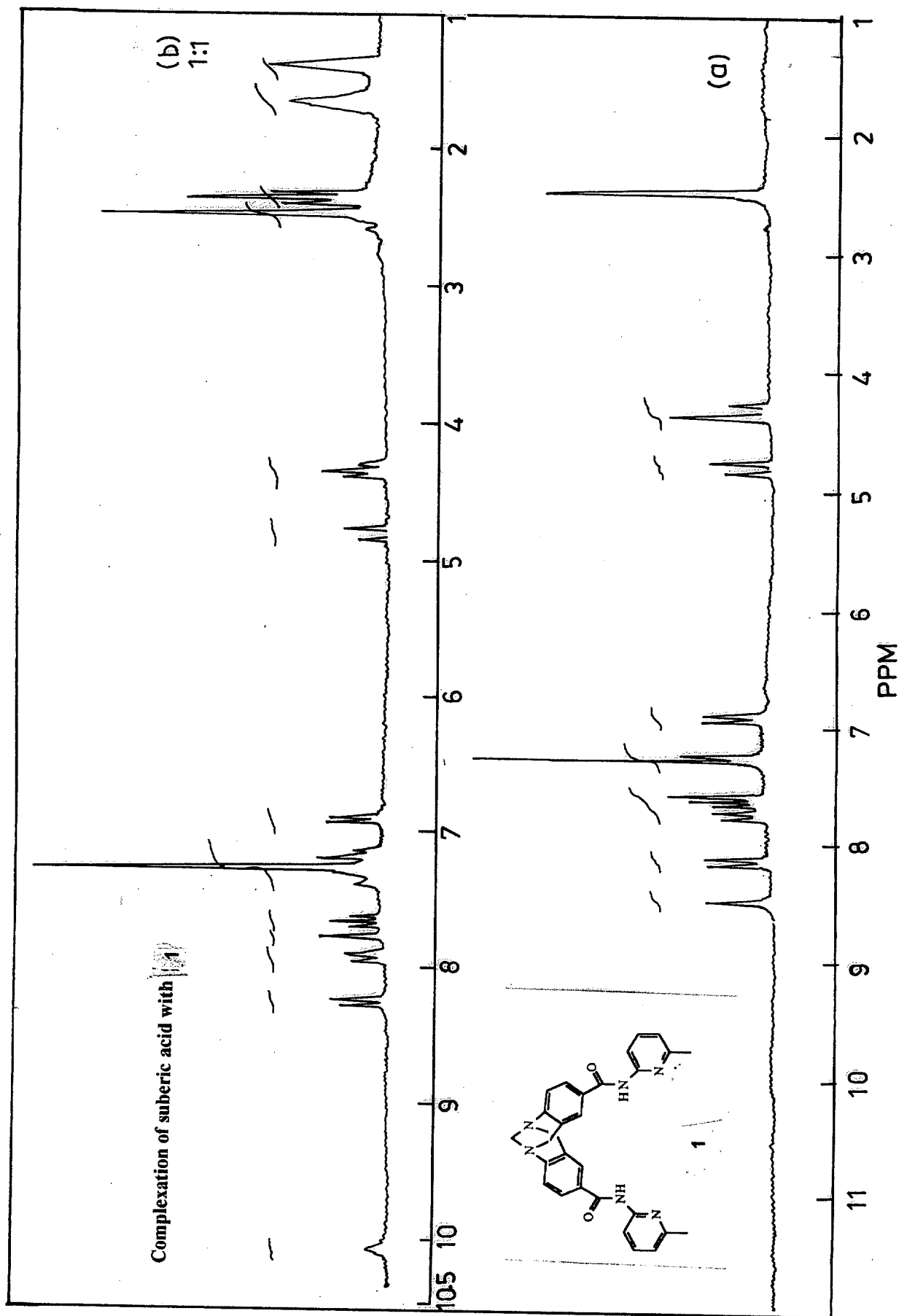
File: kg173. Creation Date: 2/11/97. Time: 12:08:59. Type: Lo-Res Mass Converted Data
Title: BOGGS/PILATO EI
Desc: Res = 1200, Sam/Pk = 20, Thresh = 100, PeakWidth = 10, MultWidth = 7
Delay = 1.00, Int. Start, Scan Rate = 5.0 (100%)
Local Start, Sol. Delay = 0.00, Fil. Delay = 0.00, Manual Stop

Mass spectrum of 1



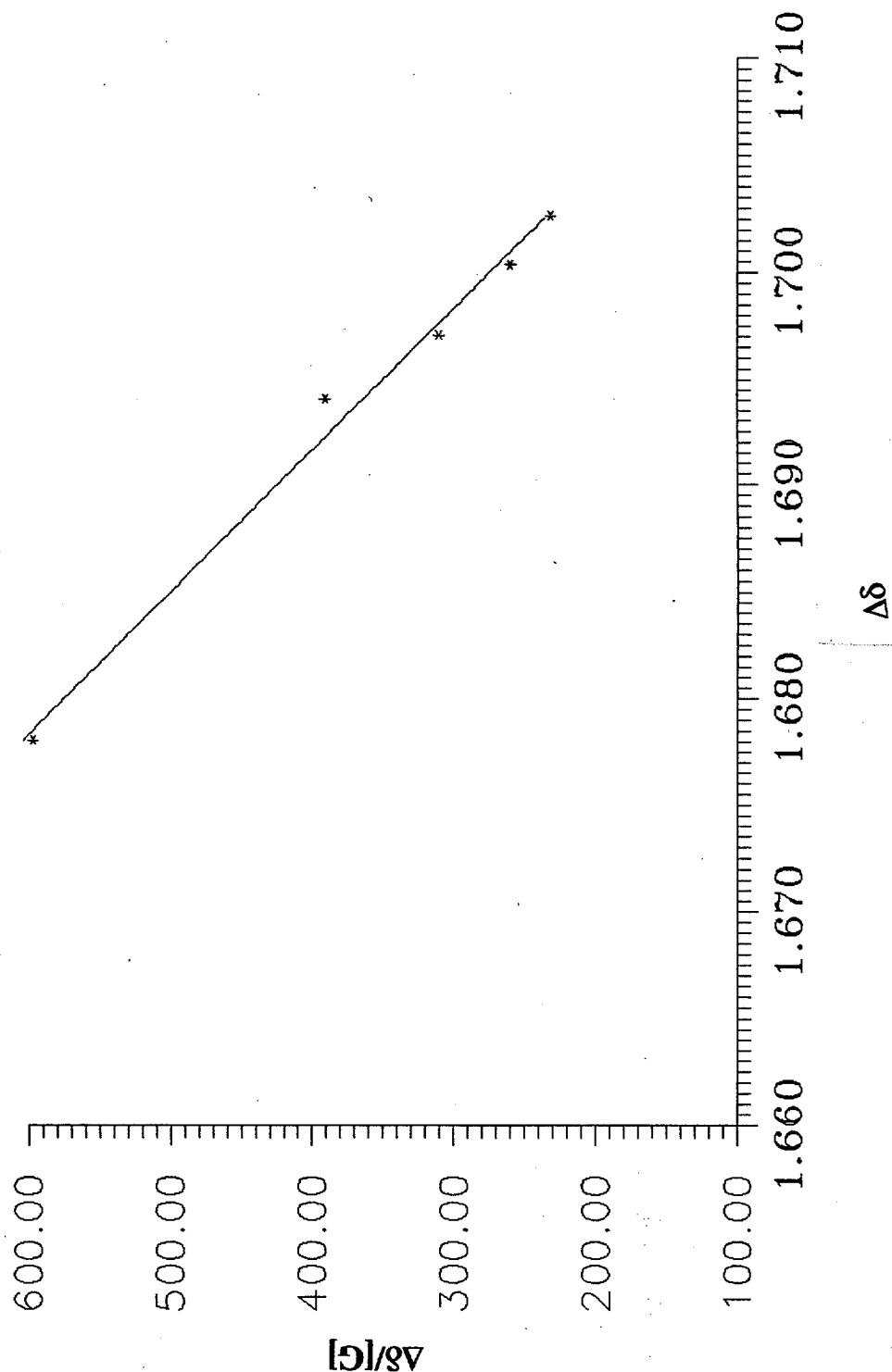
Scan Plot.
Filter: none. Base Peak = auto.
Scan 23-2:24. Entries = 682, Base Peak = 383.3, 100% Int. = 980113.



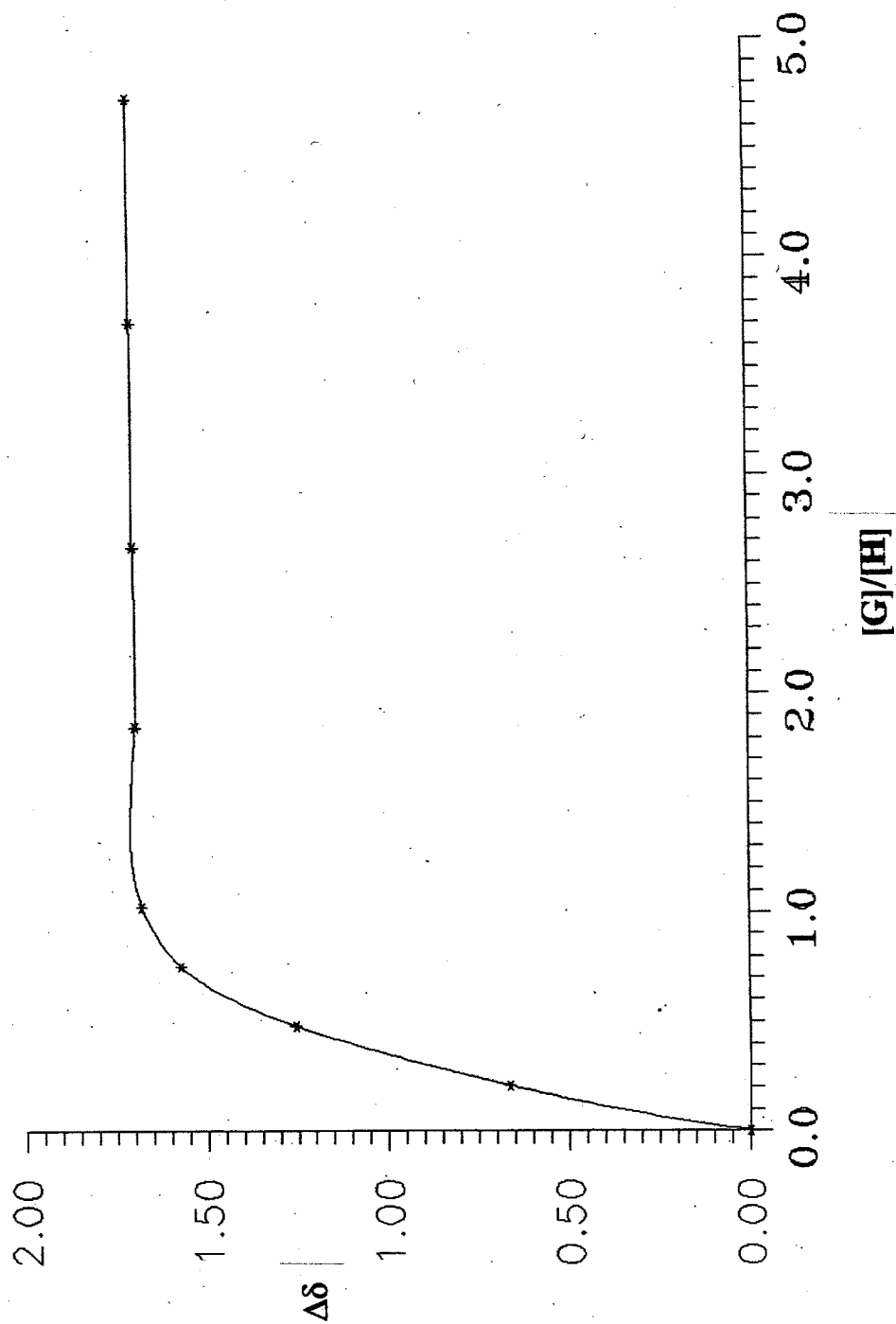


Binding constant curve for suberic acid with receptor 1

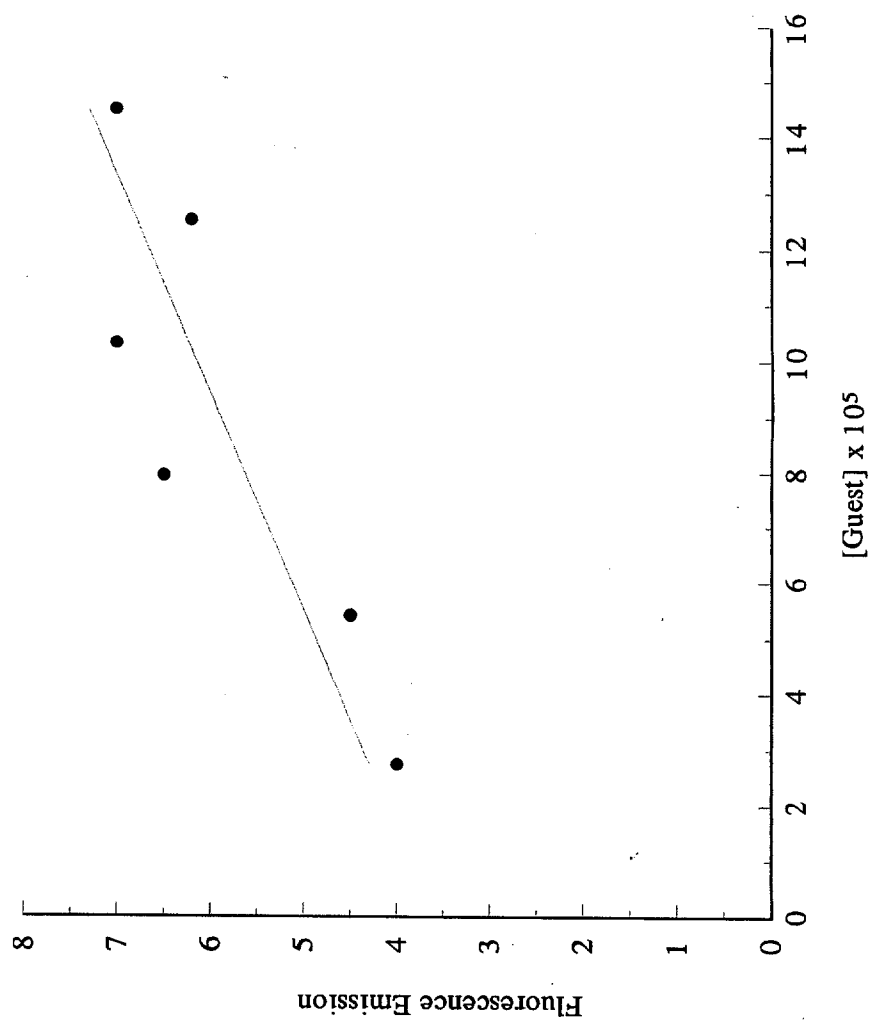
$$K_a = 1.50 \times 10^4 \text{ M}^{-1}$$



Titration curve for suberic acid with receptor 1



Fluorescence binding curve for suberic acid with receptor 1



1.56745
1.39250
1.33142
1.28276
1.25425

2.42255
2.38694

3.58637

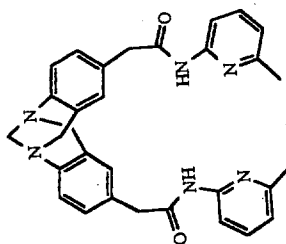
4.30666
4.20635
4.12252

4.74114
4.65522

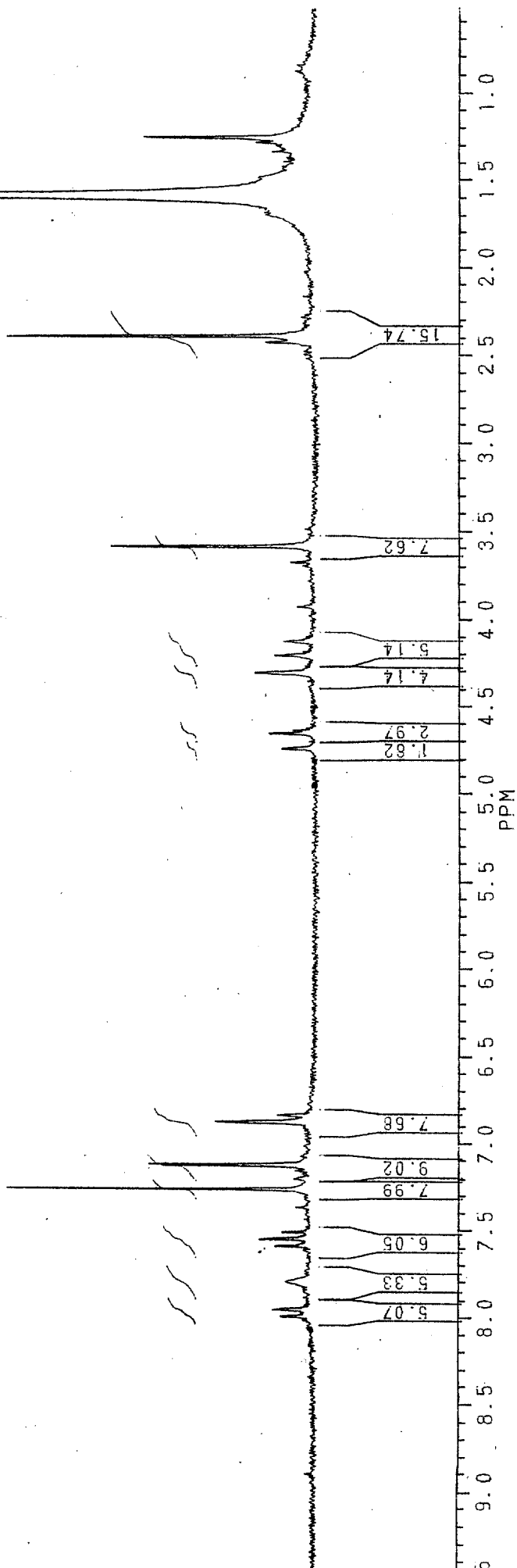
7.56632
7.54747
7.50765
7.25906
7.12585
7.12114
6.87532
6.83721

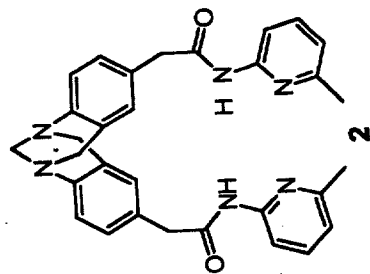
7.95021
7.99064

¹H NMR of 2



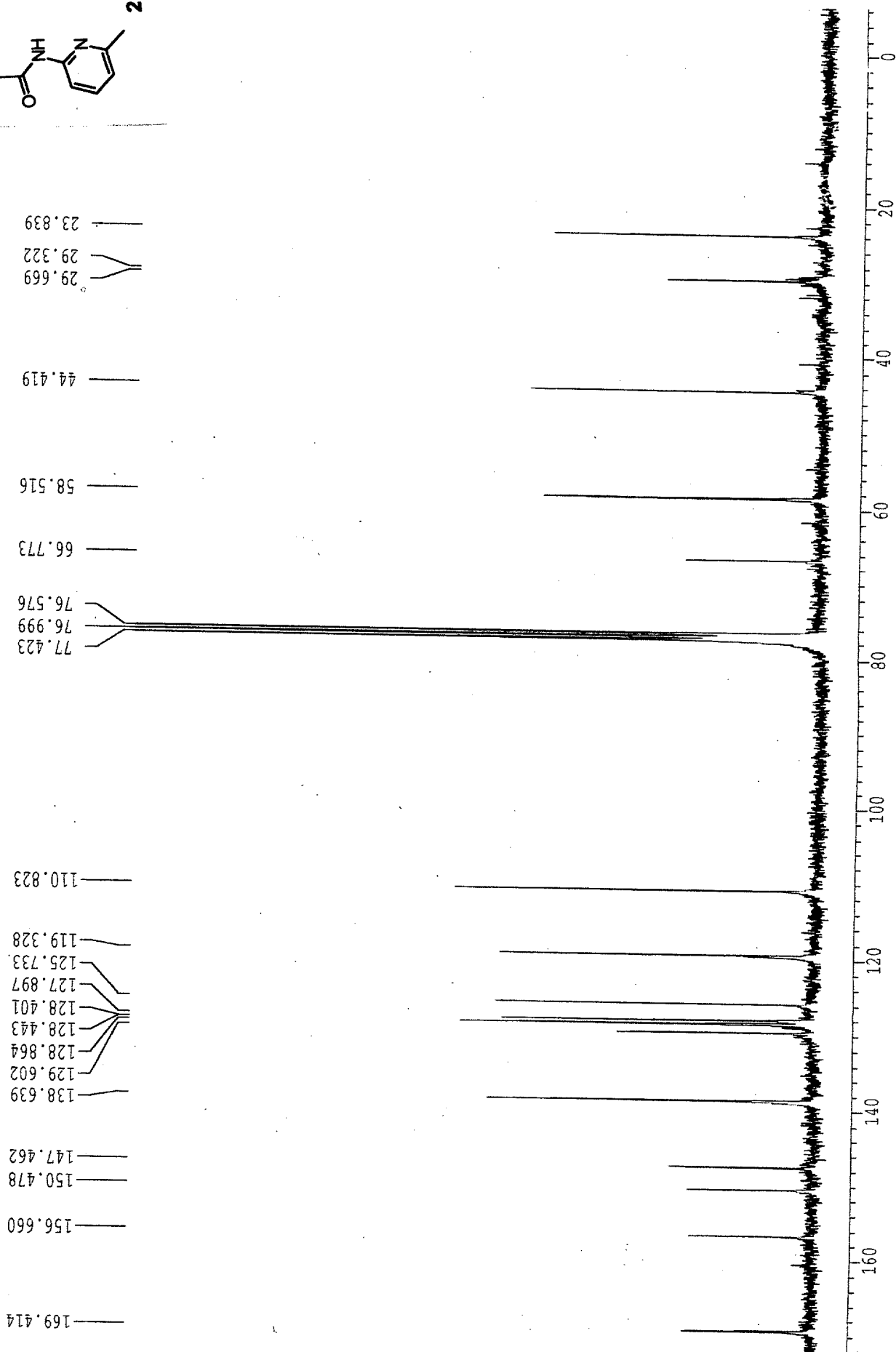
2





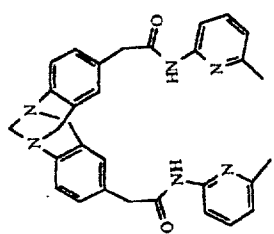
¹³C NMR of 2

SPG/KG2 13C CDCl3 25.12.98



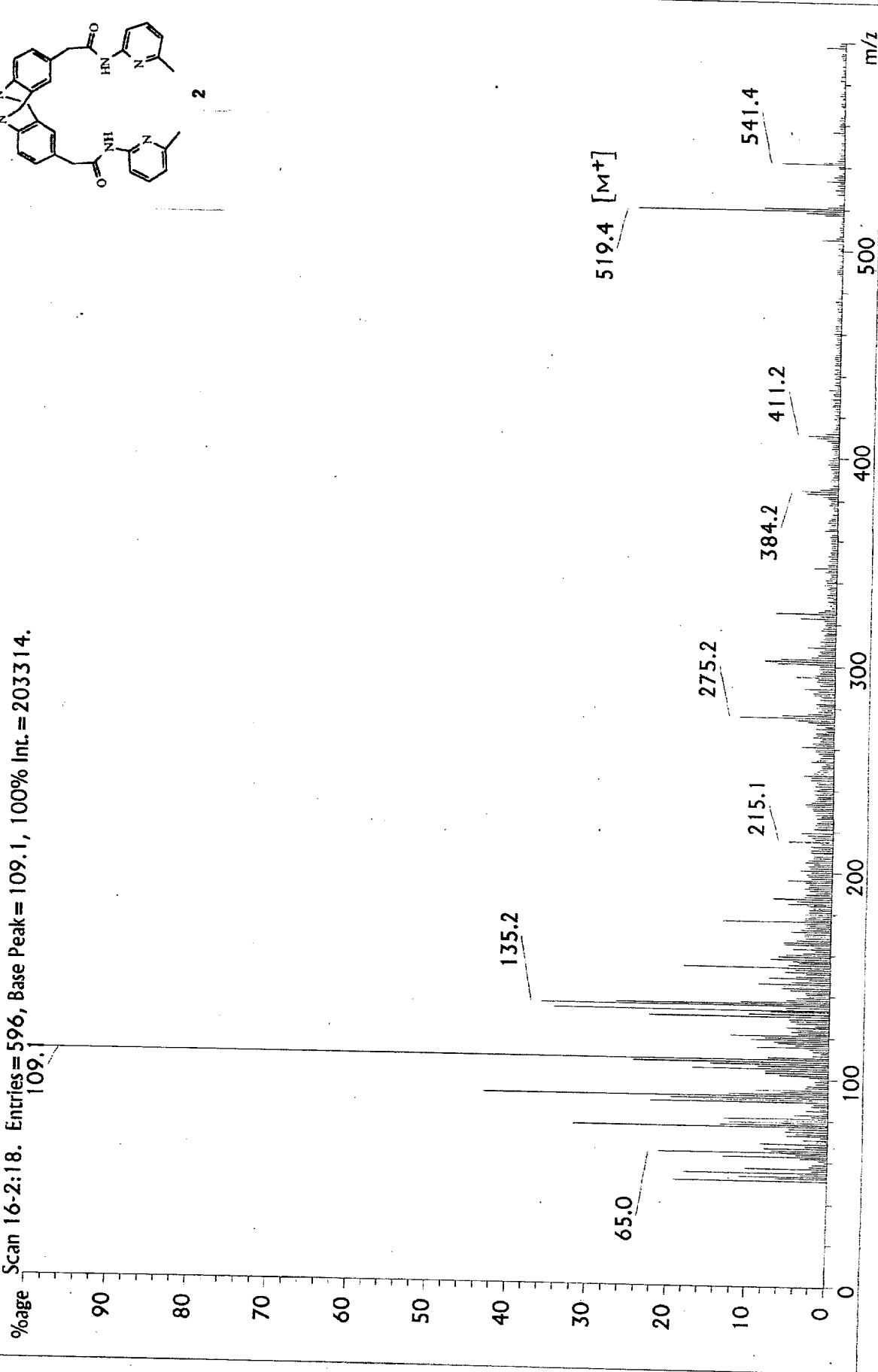
File: spkg2a. Creation Date: 4/2/98. Time: 13:12:49. Type: Lo-Res Mass Converted Data
 Title: VAN HOUTEN/PILATO FAB
 Desc: Res = 1200, Sam/Pk = 20, Thresh = 100, PeakWidth = 10, MultWidth = 7
 Delay = 1.00, Int.Start, Scan Rate = 5.0 (100%)
 Local Start, Sol. Delay = 0.00, Fil. Delay = 0.00, Manual Stop

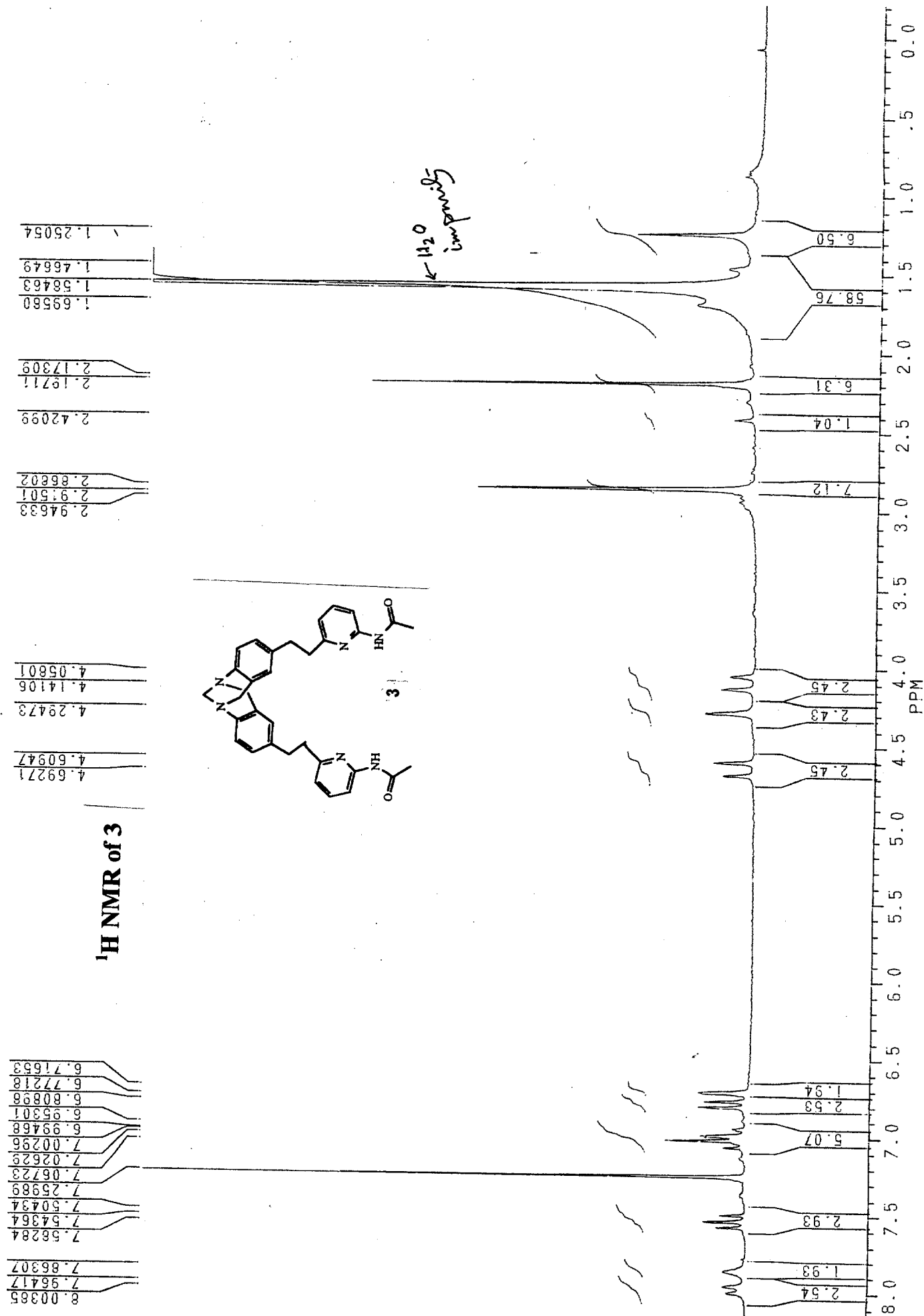
Mass spectrum of 2

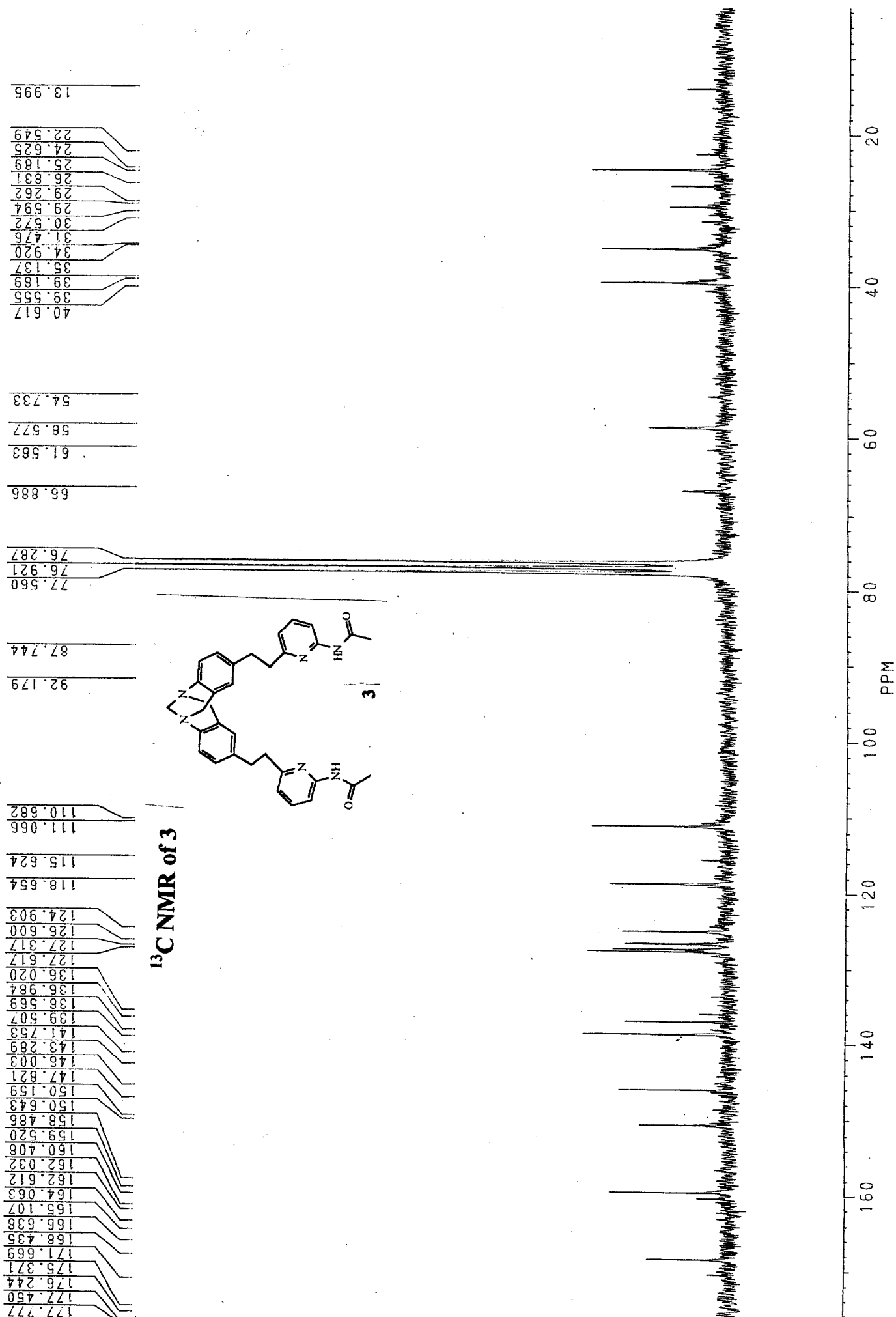


Scan Plot.
 Filter: none. Base Peak = auto.

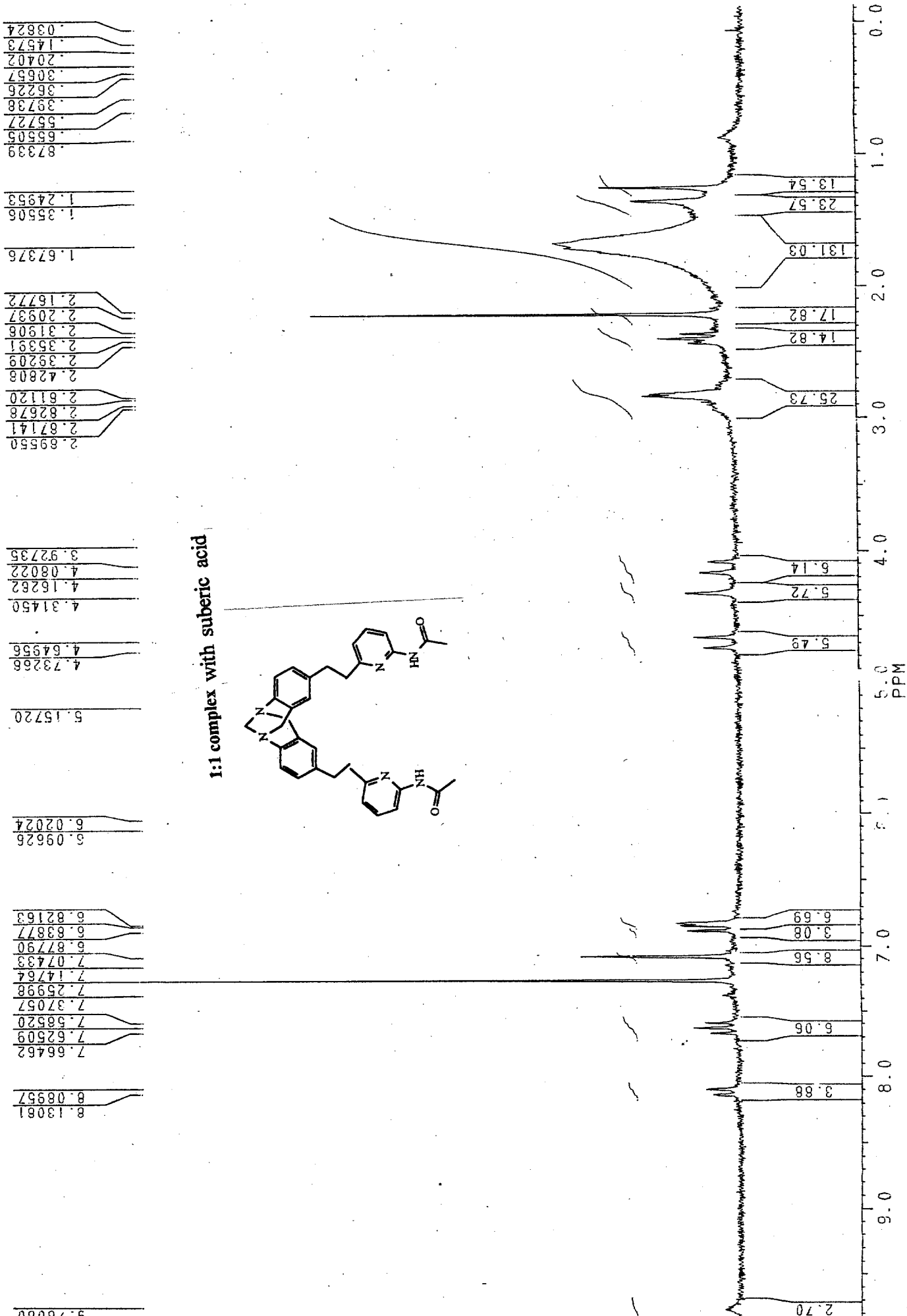
Scan 16-2:18. Entries = 596, Base Peak = 109.1, 100% Int. = 203314.





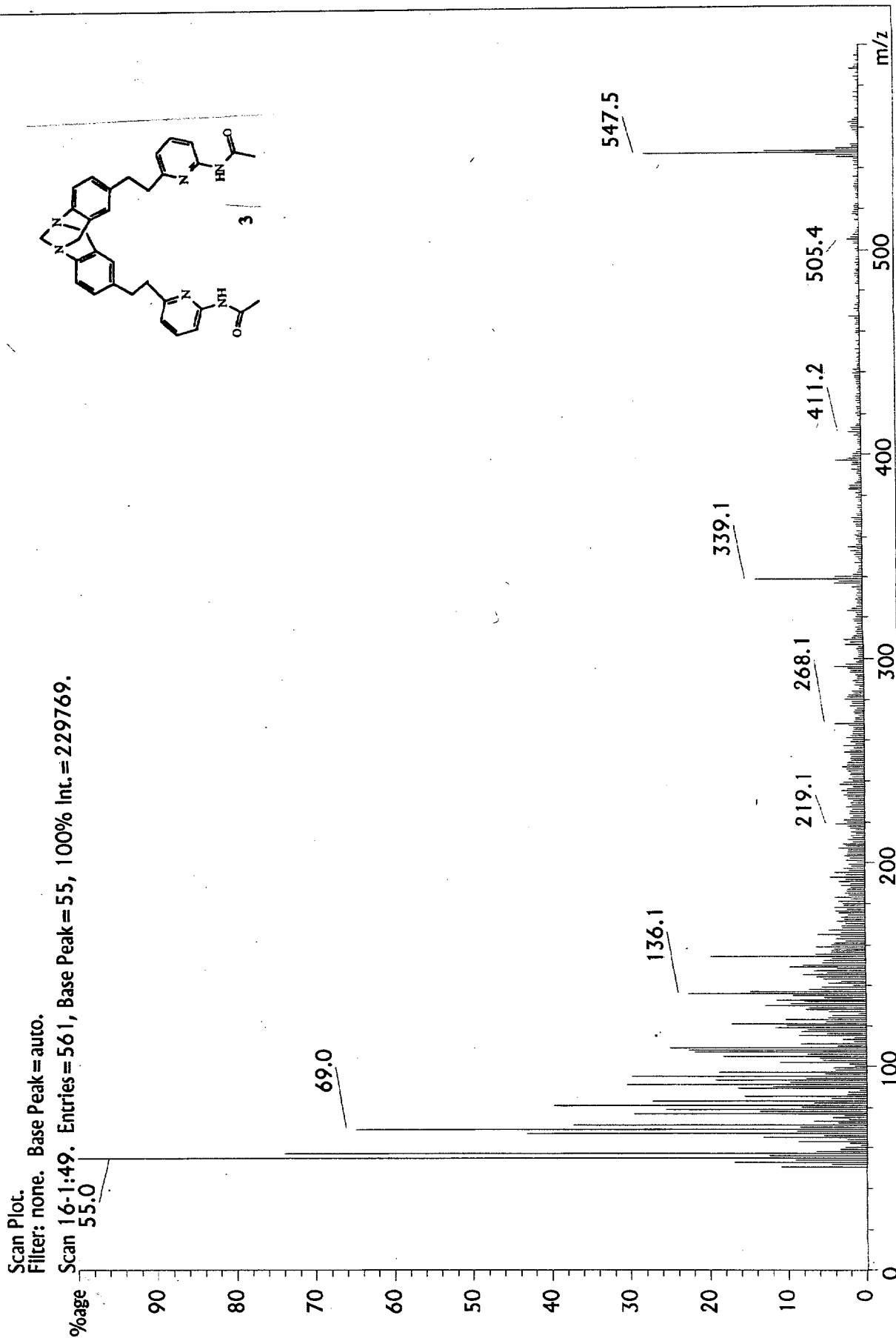


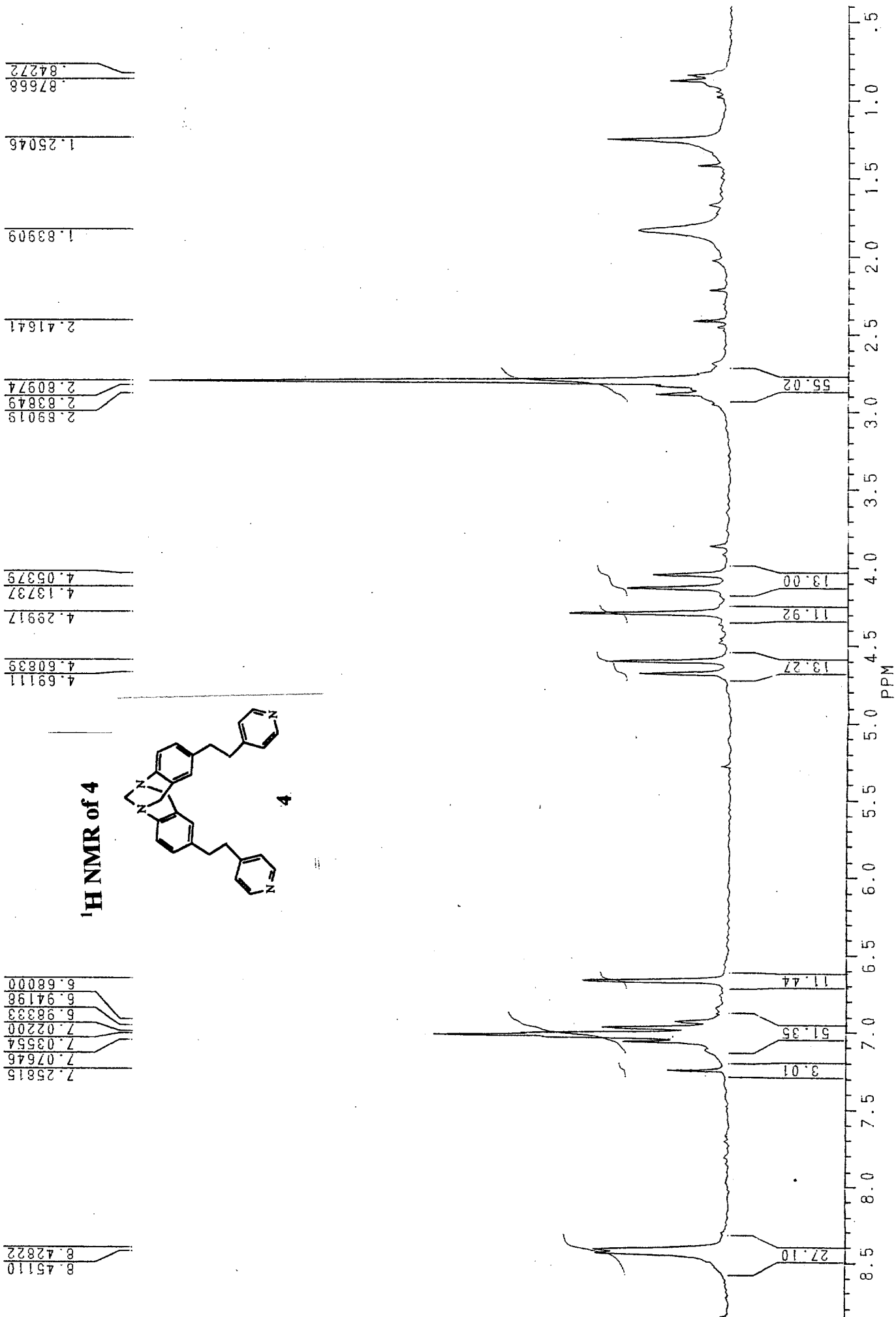
SPG / KG



Mass spectrum of 3

File: spkg1. Creation Date: 4/2/98. Time: 12:48:23. Type: Lo-Res Mass Converted Data
 Title: VAN HOUTEN/PILATO FAB
 Desc: Res = 1200, Sam/Pk = 20, Thresh = 100, PeakWidth = 10, MultWidth = 7
 Delay = 1.00, Int.Start, Scan Rate = 5.0 (100%)
 Local Start, Sol.Delay = 0.00, Fil.Delay = 0.00, Manual Stop





5.738
6.311
7.539
8.511
9.768
11.756
13.347
14.334
14.760
18.069
19.135
21.060
21.314
22.442
24.155
25.156
25.563
26.546
29.606
30.666
31.400
32.684
34.917
35.943
36.921
39.705
41.625
43.321
44.730
45.751
47.237
54.216
57.052
58.650
59.821
63.010
63.652
64.113
66.951
67.993
70.136
71.930
72.618
74.337
76.285
76.919
77.557
83.125
83.566
86.292
88.253
89.776
93.547
97.358
98.925
99.241

106.682
106.341

112.526

119.712

123.766
125.000
126.638
127.295
127.723

134.975
136.277

142.770

146.275

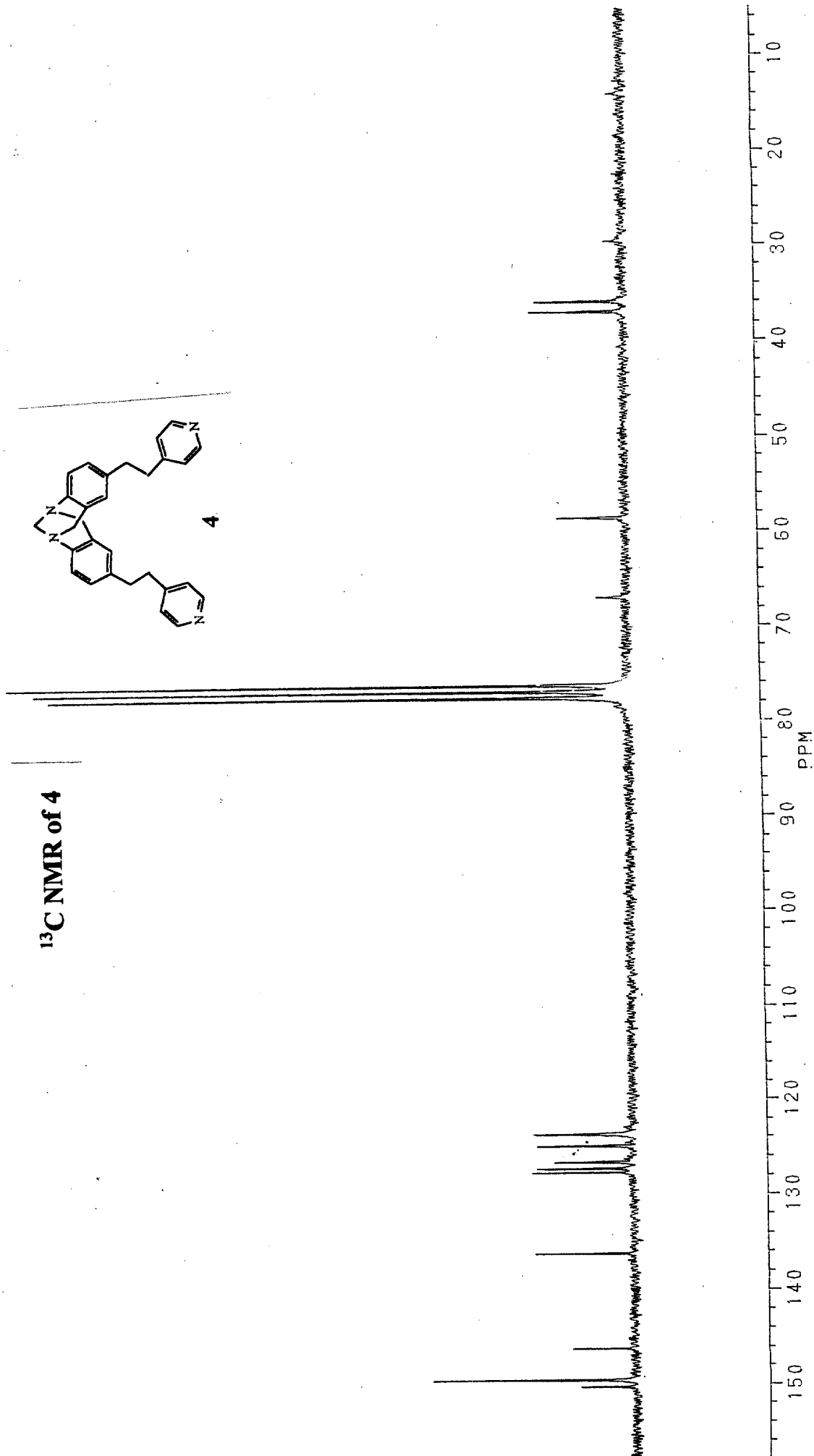
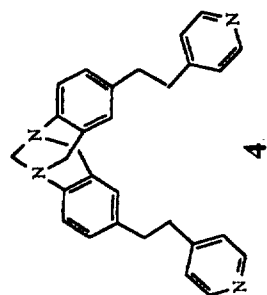
149.601

150.353

153.916

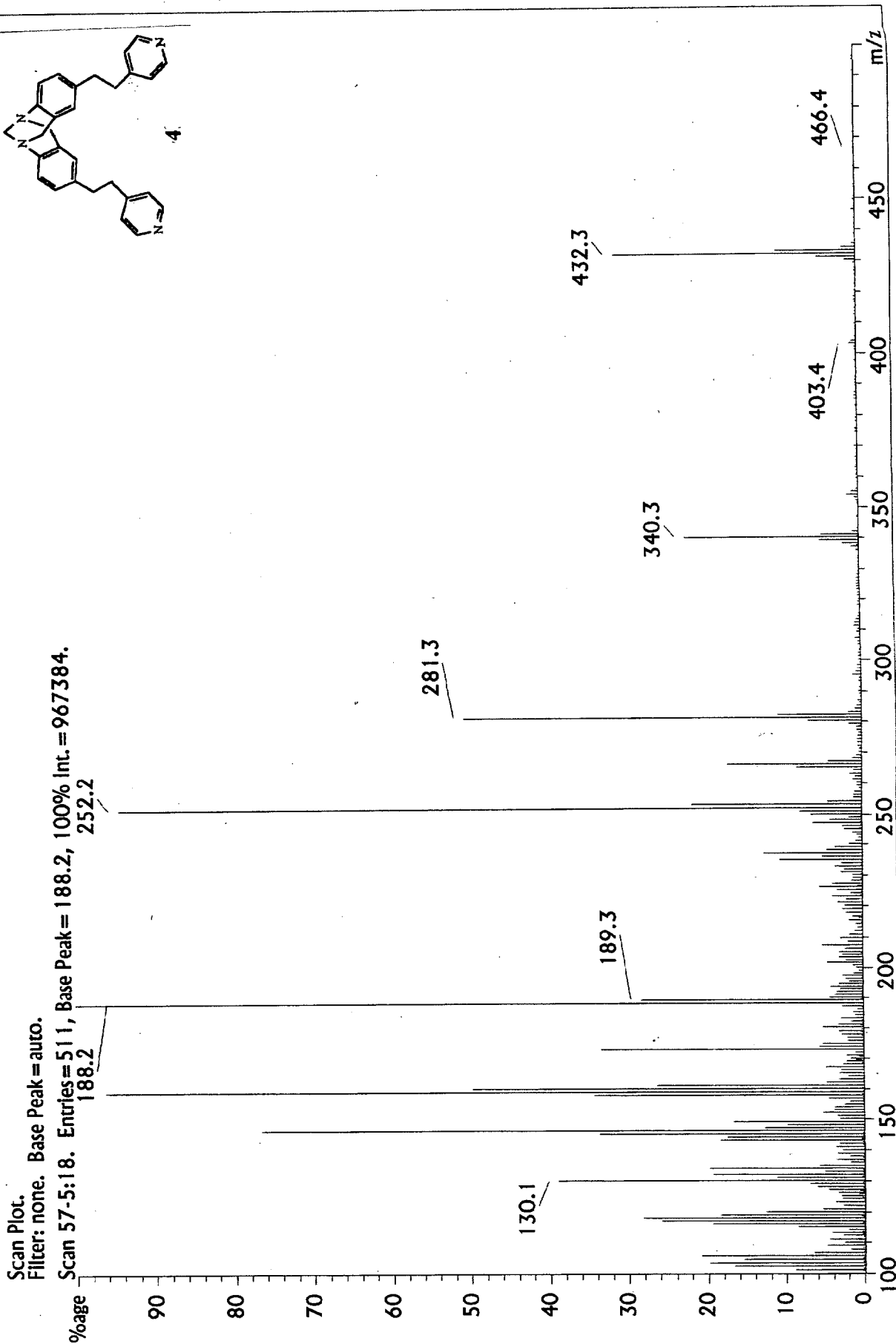
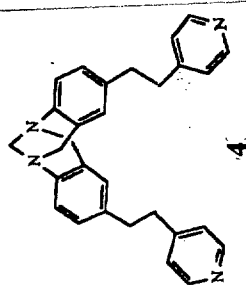
155.647

¹³C NMR of 4



Mass spectrum of 4

File: spgkg3. Creation Date: 4/1/98. Time: 13:16:19. Type: Lo-Res Mass Converted Data
 Title: VAN HOUTEN/PILATO EI
 Desc: Res = 1200, Sam/Pk = 20, Thresh = 100, PeakWidth = 10, MultWidth = 7
 Delay = 1.00, Int.Start, Scan Rate = 5.0 (100%)
 Local Start, Sol. Delay = 0.00, Fil. Delay = 0.00, Manual Stop



Competition of suberic acid with receptor 5

