

Macromolecules

Macromolecules, 1997, 30(4), 1222-1224, DOI:[10.1021/ma9609893](https://doi.org/10.1021/ma9609893)

Terms & Conditions

Electronic Supporting Information files are available without a subscription to ACS Web Editions. The American Chemical Society holds a copyright ownership interest in any copyrightable Supporting Information. Files available from the ACS website may be downloaded for personal use only. Users are not otherwise permitted to reproduce, republish, redistribute, or sell any Supporting Information from the ACS website, either in whole or in part, in either machine-readable form or any other form without permission from the American Chemical Society. For permission to reproduce, republish and redistribute this material, requesters must process their own requests via the RightsLink permission system. Information about how to use the RightsLink permission system can be found at <http://pubs.acs.org/page/copyright/permissions.html>



ACS Publications

MOST TRUSTED. MOST CITED. MOST READ.

Copyright © 1997 American Chemical Society

Co-Biph

Table 1, Entry 1

JASCO FT/IR-5300

Date : 95/05/10 11:34

File Name :

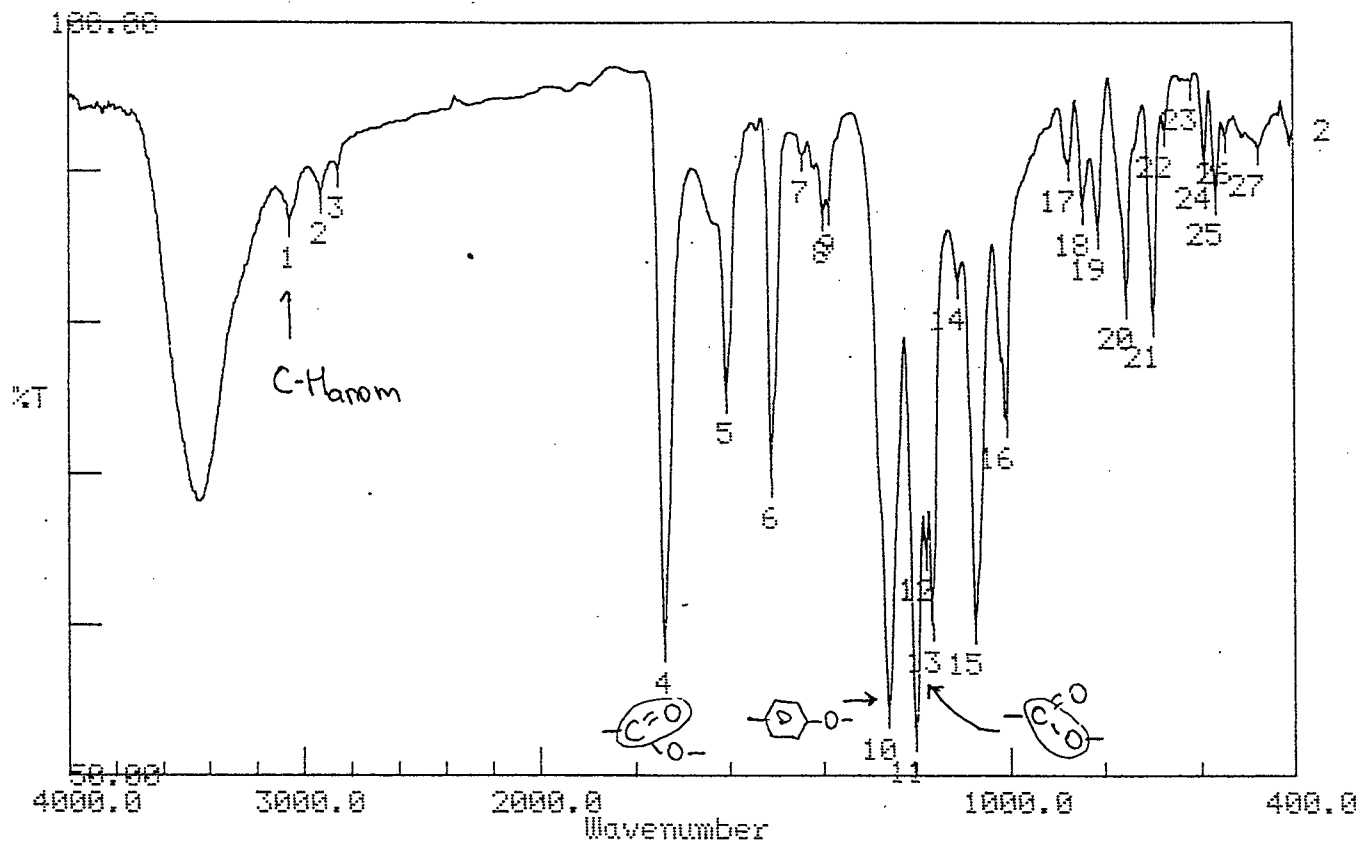
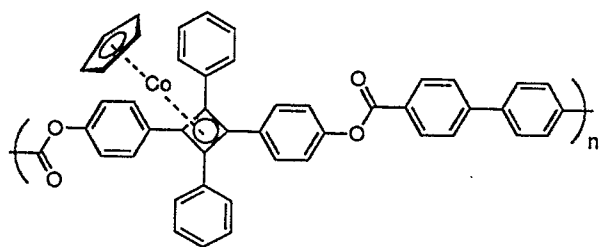
Sample Name: S-133

Resolution : 4

Scans : 16

Gain : 2

Apodization: CS



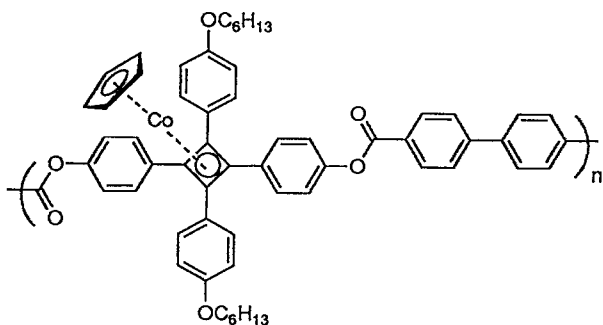
Condition

upper 100.00 lower 50.00 depth 0.50

Peak table

①	3057.45(86.8)	2:	2924.35(88.4)	3:	2852.98(90.1)
④	1736.09(58.7)	5:	1604.92(75.2)	6:	1508.47(69.6)
7:	1442.88(91.1)	8:	1396.59(87.1)	9:	1385.01(87.6)
⑩	1259.63(54.2)	⑪	1199.83(52.7)	⑫	1178.61(64.8)
⑬	1163.18(60.1)	14:	1109.17(82.7)	15:	1072.52(59.9)
16:	1005.00(73.5)	17:	873.83(90.6)	18:	842.97(87.6)
19:	810.18(86.0)	20:	752.31(81.5)	21:	696.37(80.3)
22:	671.29(92.8)	23:	617.28(96.0)	24:	588.34(90.8)
25:	565.19(88.4)	26:	543.98(92.4)	27:	474.53(91.6)

Table 1, Entry 2



JASCO FT/IR-5300

Date : 95/05/10 14:29

File Name :

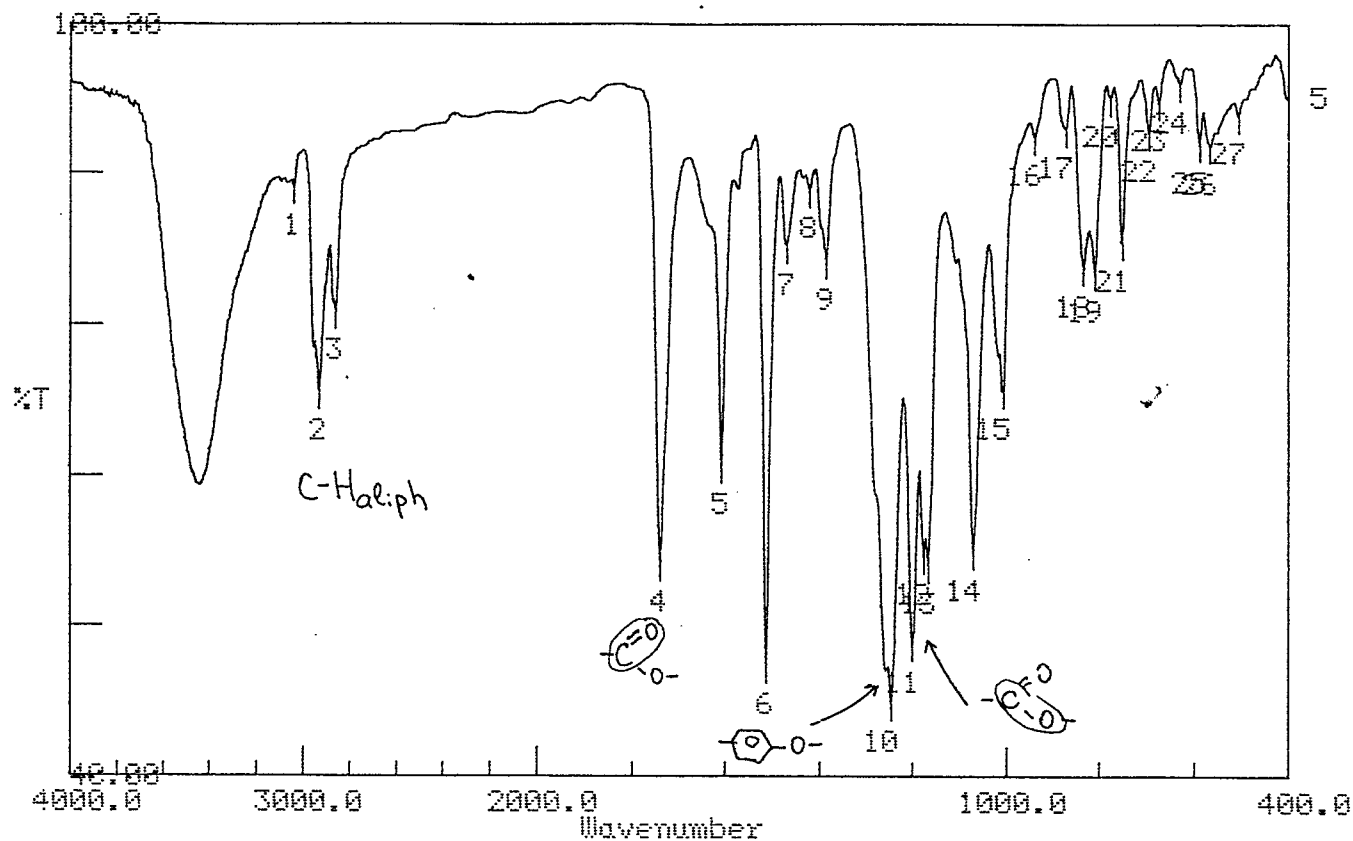
Sample Name: S-135

Resolution : 4

Scans : 16

Gain : 2

Apodization: CS



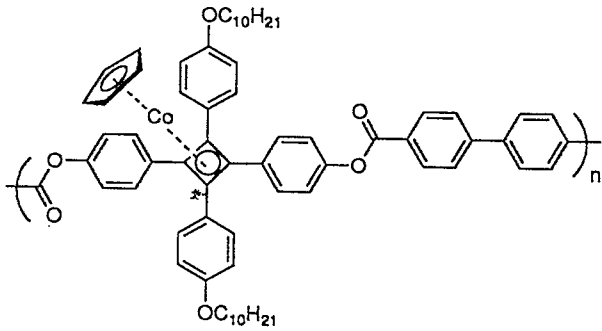
Condition

upper 100.00 lower 40.00 depth 1.00

Peak table

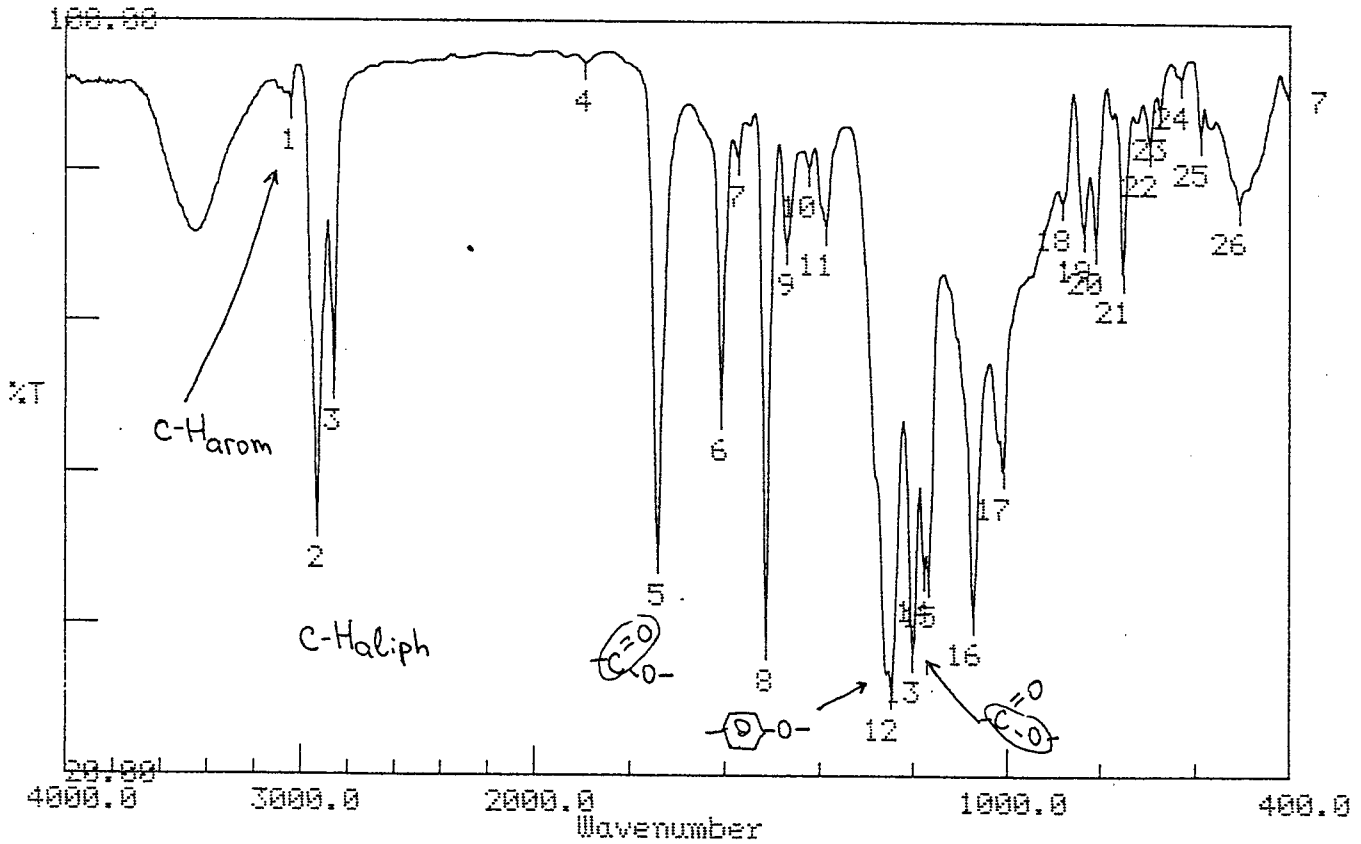
①	3042.02(86.8)	②	2928.21(70.6)	③	2858.76(77.0)
④	1738.02(56.9)	5:	1606.85(64.7)	6:	1512.33(48.8)
7:	1467.96(82.1)	8:	1419.74(86.7)	9:	1385.01(80.9)
⑩:	1244.20(45.7)	⑪:	1199.83(50.5)	⑫:	1176.68(57.5)
⑬:	1165.11(56.7)	14:	1068.66(57.8)	15:	1006.93(70.7)
16:	937.49(90.9)	17:	871.90(91.5)	18:	833.32(80.3)
19:	808.25(80.0)	20:	777.38(94.0)	21:	750.38(82.4)
22:	694.44(91.2)	23:	673.22(93.7)	24:	626.92(95.1)
25:	586.41(90.3)	26:	565.19(90.2)	27:	503.47(92.6)

Table 1, Entry 3



JASCO FT/IR-5300

Date : 95/05/10 15:14
 File Name :
 Sample Name: S-137
 Resolution : 4
 Scans : 16
 Gain : 2
 Apodization: CS

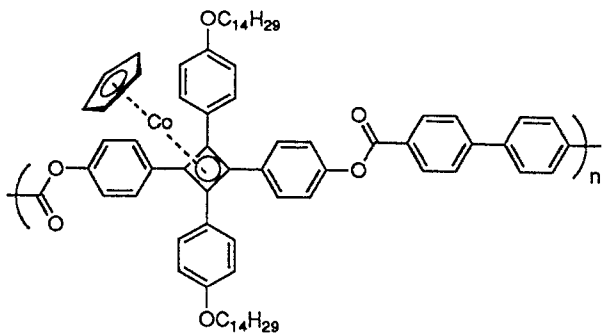


Condition
 upper 100.00 lower 20.00 depth 1.00

Peak table

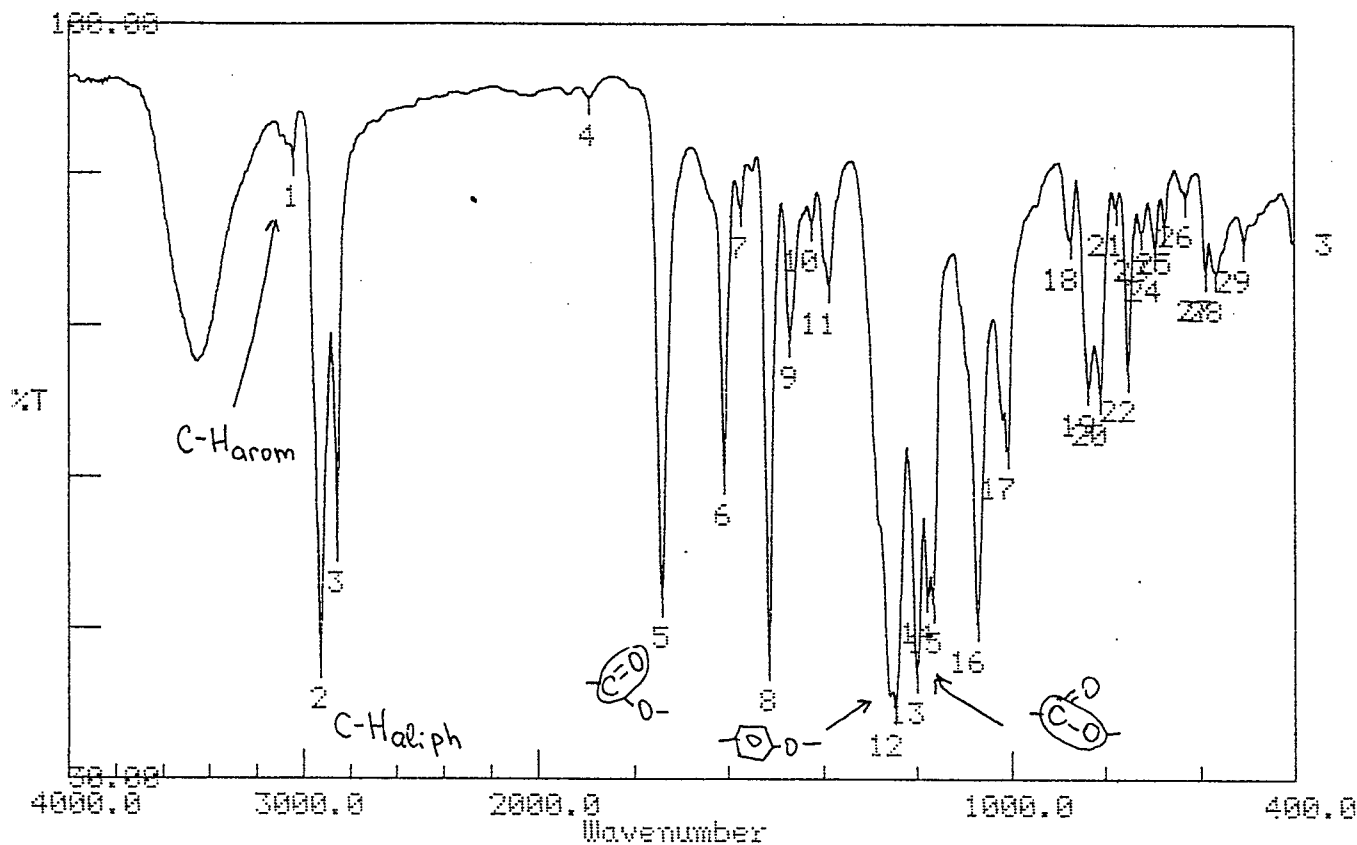
①: 3042.02(91.2)	②: 2924.35(47.0)	③: 2854.90(61.5)
4: 1892.34(95.4)	⑤: 1738.02(43.1)	6: 1606.85(58.5)
7: 1572.13(85.4)	8: 1512.33(34.1)	9: 1467.96(76.0)
10: 1421.67(84.3)	11: 1385.01(78.1)	⑫: 1246.13(28.9)
⑬: 1199.83(33.0)	⑭: 1176.68(41.5)	⑮: 1165.11(40.9)
16: 1068.66(36.9)	17: 1006.93(52.4)	18: 879.62(80.9)
19: 833.32(77.6)	20: 808.25(76.3)	21: 750.38(73.2)
22: 694.44(86.7)	23: 673.22(90.6)	24: 626.92(94.0)
25: 586.41(87.8)	26: 503.47(80.6)	

Table 1, Entry 4



JASCO FT/IR-5300

Date : 95/02/27 16:55
 File Name :
 Sample Name: S-127
 Resolution : 4
 Scans : 16
 Gain : 2
 Apodization: CS



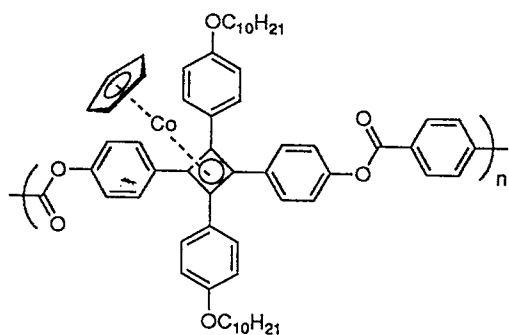
Condition

upper 100.00 lower 30.00 depth 1.00

Peak table

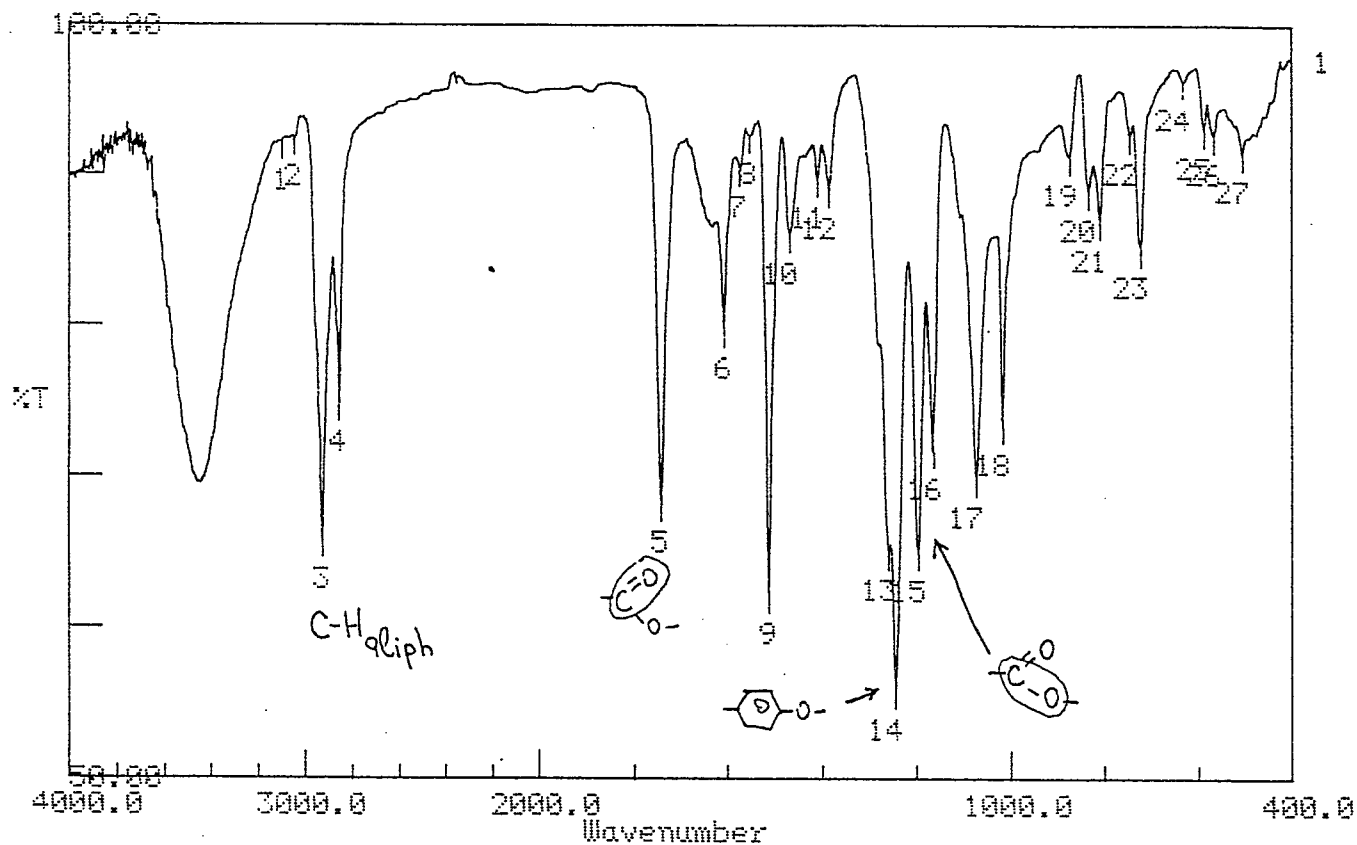
①: 3042.02(87.4)	②: 2924.35(40.9)	③: 2852.98(51.8)
4: 1892.34(93.0)	⑤: 1738.02(46.7)	6: 1606.85(58.0)
7: 1572.13(82.7)	8: 1512.33(40.8)	9: 1467.96(70.7)
10: 1421.67(81.5)	11: 1385.01(75.7)	⑫: 1244.20(36.6)
⑬: 1197.90(39.6)	⑭: 1176.68(47.1)	⑮: 1163.18(46.2)
16: 1068.66(44.4)	17: 1005.00(60.5)	18: 871.90(79.9)
19: 833.32(66.3)	20: 808.25(65.4)	21: 775.45(83.1)
22: 750.38(67.6)	23: 721.44(80.7)	24: 694.44(78.8)
25: 673.22(81.4)	26: 626.92(83.9)	27: 586.41(77.0)
28: 565.19(77.0)	29: 505.40(79.7)	

Table 1, Entry 5



JASCO FT/IR-5300

Date : 95/05/16 11:04
 File Name :
 Sample Name: S-139
 Resolution : 4
 Scans : 16
 Gain : 2
 Apodization: CS



Condition

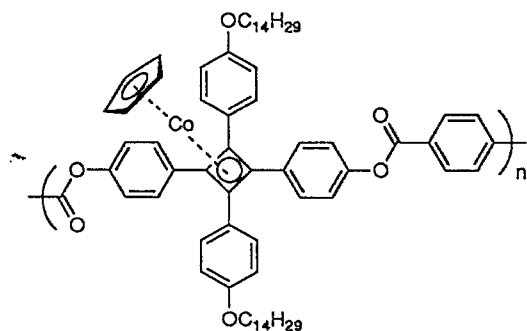
upper 100.00 lower 50.00 depth 0.50

Peak table

1:	3097.96(92.1)	2:	3045.87(92.4)	3:	2924.35(65.7)
4:	2854.90(74.8)	5:	1741.88(68.2)	6:	1606.85(79.7)
7:	1574.06(90.4)	8:	1552.84(92.6)	9:	1512.33(62.1)
10:	1467.96(86.0)	11:	1408.16(89.6)	12:	1385.01(89.0)
13:	1259.63(65.0)	14:	1244.20(55.7)	15:	1195.97(65.0)
16:	1163.18(71.7)	17:	1072.52(69.8)	18:	1014.65(73.3)
19:	873.83(91.2)	20:	833.32(88.8)	21:	808.25(86.8)
22:	744.59(92.6)	23:	721.44(85.1)	24:	630.78(96.2)
25:	586.41(93.0)	26:	565.19(92.6)	27:	503.47(91.4)

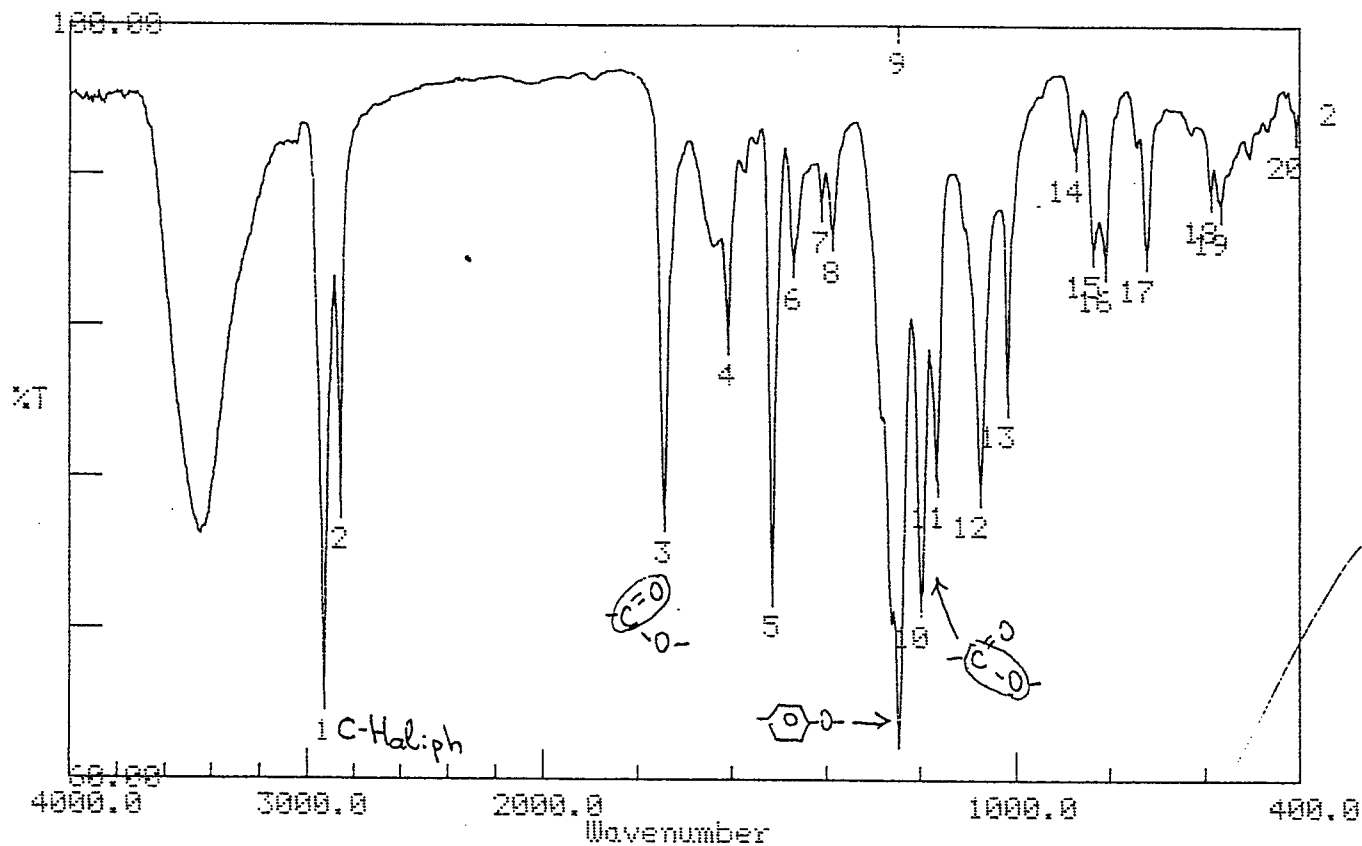
Co14-Phen

Table 1, Entry 6



JASCO FT/IR-5300

Date : 95/02/27 16:30
 File Name :
 Sample Name: S-126
 Resolution : 4
 Scans : 16
 Gain : 2
 Apodization: CS



Condition

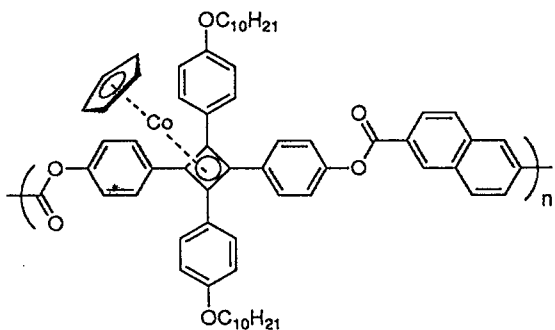
upper 100.00 lower 60.00 depth 1.00

Peak table

①	2924.35(64.5)	②	2852.98(74.7)	③	1741.88(74.0)
4:	1606.85(83.4)	5:	1512.33(70.1)	6:	1467.96(87.5)
7:	1408.16(90.5)	8:	1385.01(89.0)	⑨	1244.20(61.7)
⑩	1195.97(69.5)	⑪	1163.18(76.0)	12:	1072.52(75.4)
13:	1014.65(80.2)	14:	871.90(93.3)	15:	833.32(88.2)
16:	808.25(87.4)	17:	721.44(88.0)	18:	586.41(91.2)
19:	565.19(90.5)	20:	407.02(94.6)		

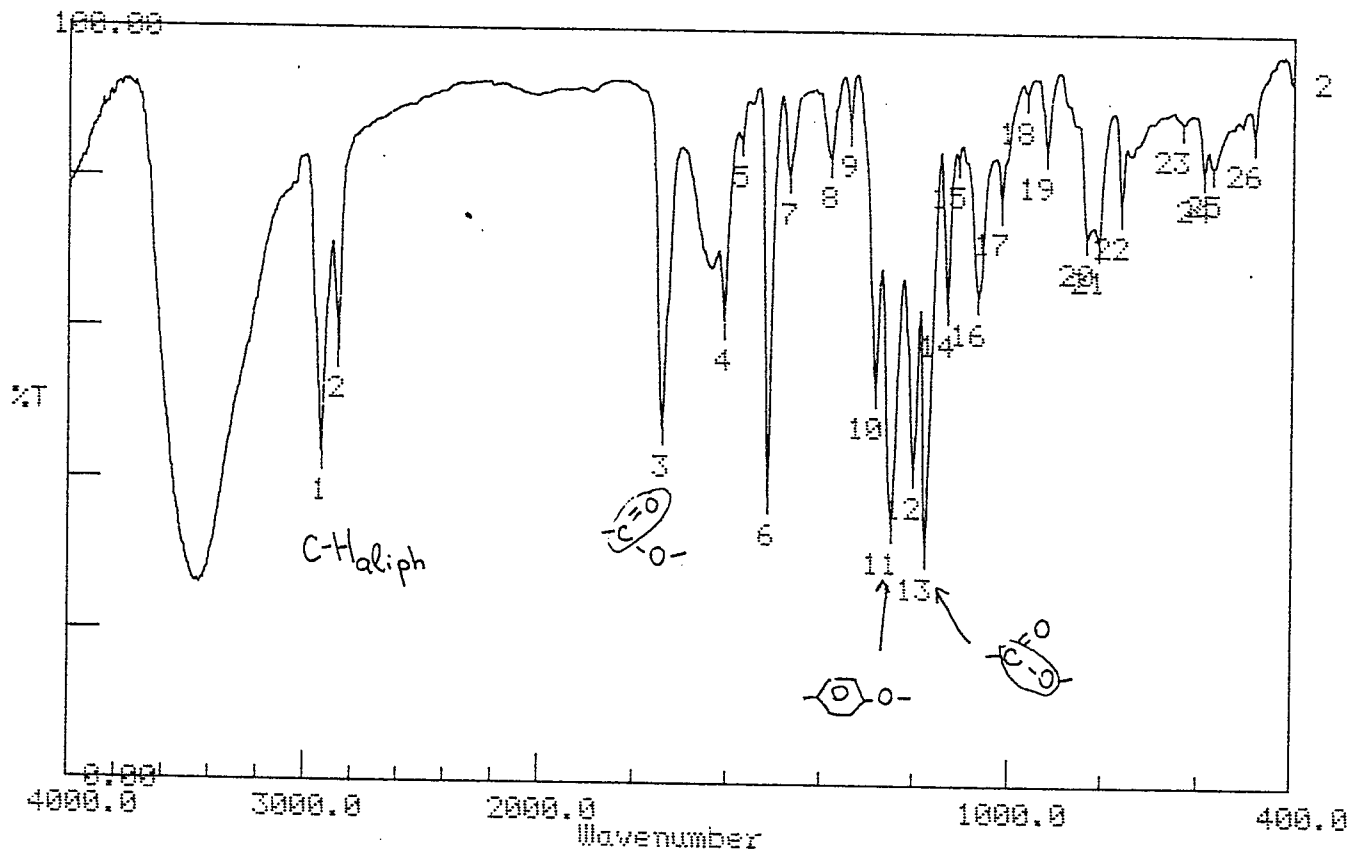
Co10-Naph

Table 1, Entry 7



JASCO FT/IR-5300

Date : 95/06/21 18:44
 File Name :
 Sample Name: 8-147
 Resolution : 4
 Scans : 16
 Gain : 2
 Apodization: CS



Condition

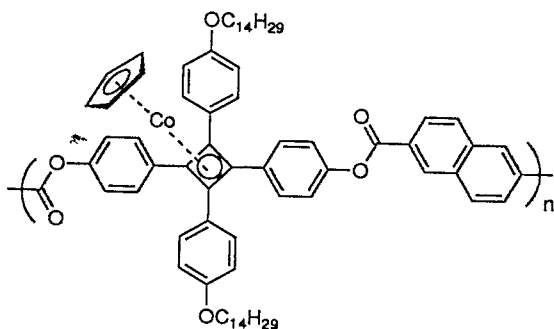
upper 100.00 lower 0.00 depth 1.00

Peak table

①	2924.35(43.4)	②	2854.99(57.0)	③	1738.02(47.0)
4:	1606.85(61.2)	5:	1572.13(85.5)	6:	1512.33(38.1)
7:	1467.96(80.7)	8:	1379.23(83.0)	9:	1338.72(87.2)
10:	1280.85(52.4)	⑪	1246.13(34.5)	⑫	1199.83(41.9)
⑬	1174.75(31.1)	14:	1128.46(63.5)	15:	1107.24(83.1)
16:	1062.87(64.8)	17:	1014.65(77.0)	18:	962.57(91.8)
19:	920.13(84.5)	20:	833.32(73.0)	21:	808.25(72.1)
22:	760.02(76.7)	23:	632.71(88.3)	24:	586.41(81.7)
25:	567.12(82.4)	26:	478.39(86.5)		

Co14-Naph

Table 1, Entry 8



JASCO FT/IR-5300

Date : 95/06/21 19:54

File Name :

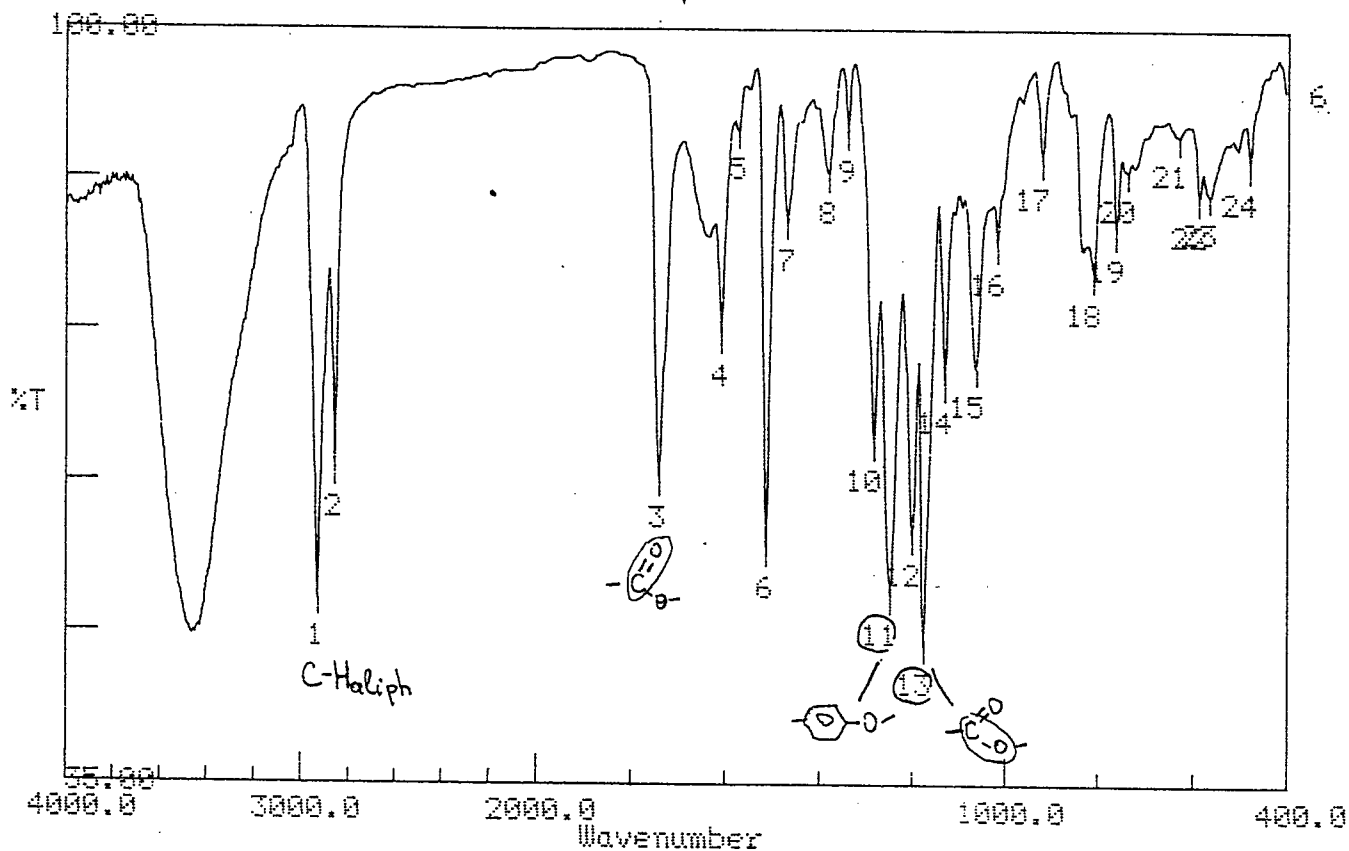
Sample Name: S-149

Resolution : 4

Scans : 16

Gain : 2

Apodization: CS



Condition

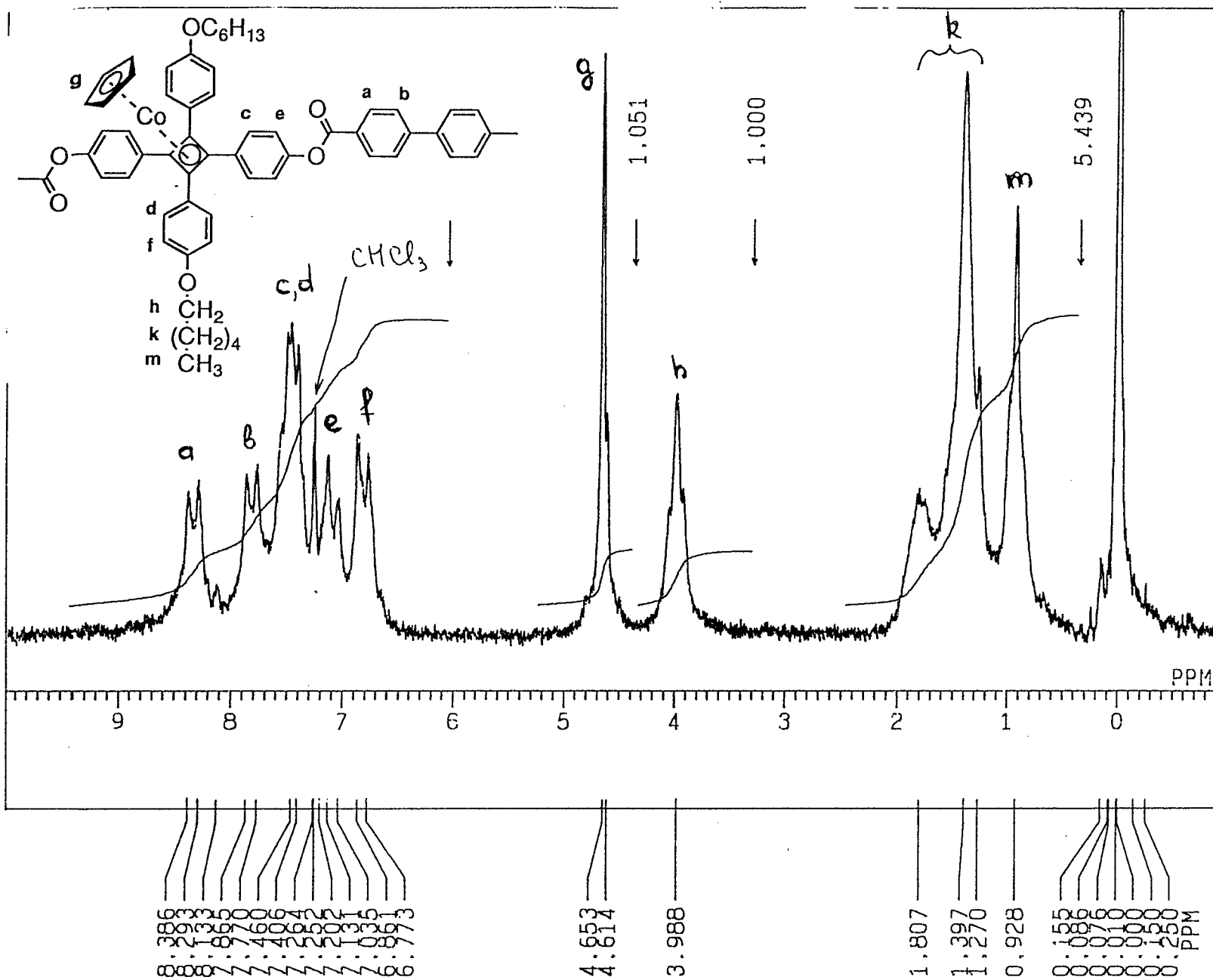
upper 100.00 lower 35.00 depth 1.00

Peak table

①	2924.35(50.8)	②	2852.98(62.0)	③	1738.02(61.2)
4:	1606.85(73.4)	5:	1572.13(91.1)	6:	1512.33(55.1)
7:	1467.96(83.3)	8:	1379.23(87.3)	9:	1338.72(91.0)
10:	1280.85(64.4)	⑪:	1246.13(51.1)	⑫:	1197.90(56.2)
⑬:	1172.83(46.9)	14:	1128.46(69.4)	15:	1060.94(70.8)
16:	1014.65(81.3)	17:	918.20(88.7)	18:	808.25(78.7)
19:	760.02(82.6)	20:	736.87(87.7)	21:	626.92(90.7)
22:	586.41(85.5)	23:	565.19(85.7)	24:	478.39(88.3)

Co6-Biph

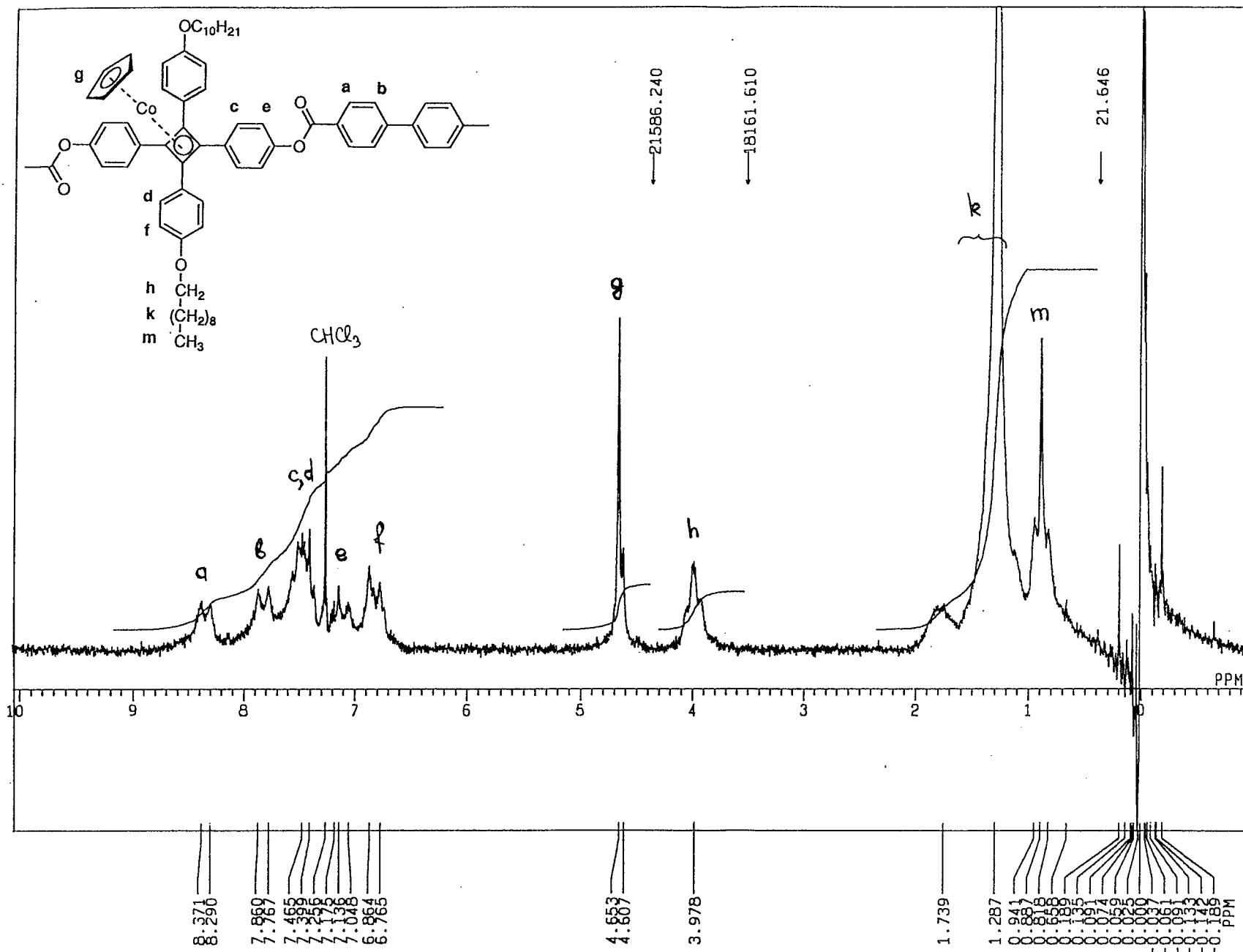
Table 1, Entry 2



03-OCT-96 17:30:15
 OBNUC 1H
 EXMOD NON
 QFR 89.45 MHz
 QBSET 50.00 kHz
 QBFIN 3700.0 Hz
 POINT 16384
 FREQ 2800.5 Hz
 SCANS 32
 ACQTM 4.550 sec
 PD 2.450 sec
 PW1 13.0 us
 IRNUC 1H
 CTEMP 28.3 c
 SLVNT CDCL3
 EXREF 0.00 ppm
 BF 0.11 Hz
 RGAIN 20
 OPERATOR :

Co10-Biph

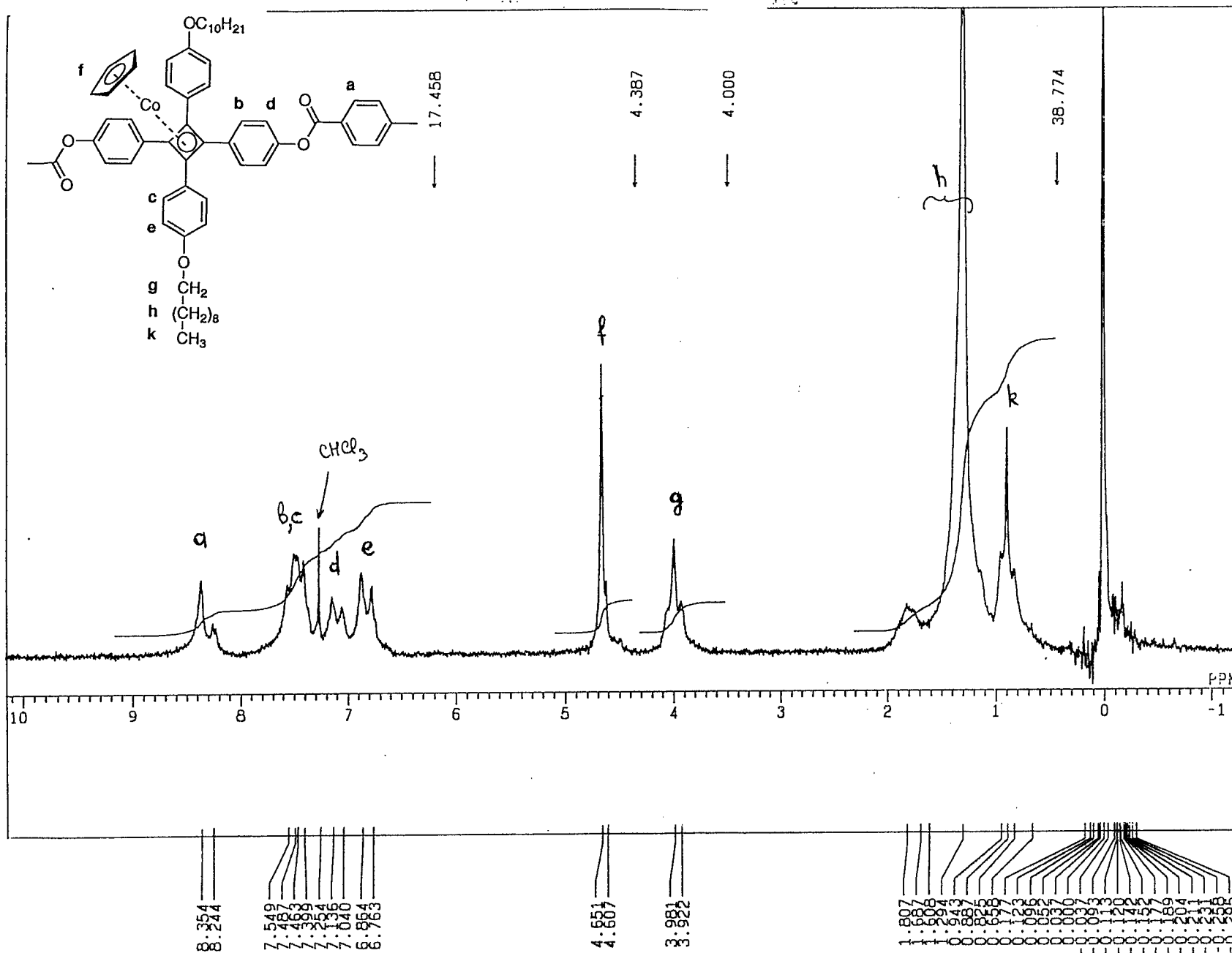
Table 1, Entry 3



09-OCT-96 20:04:25
 Q3KJC 1H
 EXMOD NON
 OFR 99.45 MHz
 OBSSET 50.00 kHz
 Q3FIN 3700.0 Hz
 POINT 16394
 FREQU 1800.5 Hz
 SCANS 32
 ACQTM 4.550 sec
 PD 2.450 sec
 PW1 13.0 us
 IRKJC 1H
 CTEMP 28.7 c
 SLVNT CDCL3
 EXREF 0.00 ppm
 BF 0.11 Hz
 RGAIN 21
 OPERATOR :

Co10-Phen

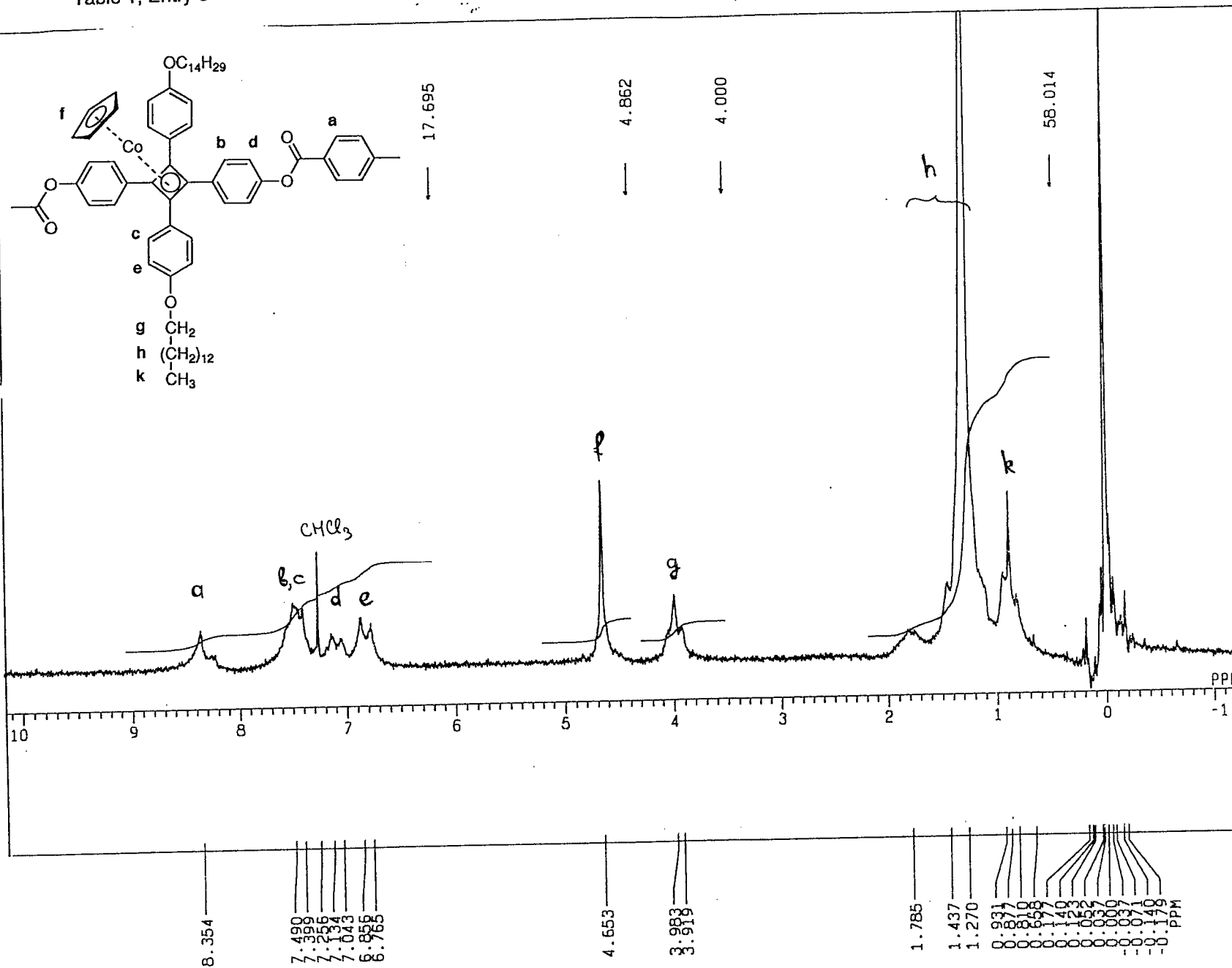
Table 1, Entry 5



09-OCT-96 14:09:36
 QBNUC 1H
 EXMOD KON
 QFR 89.45 MHz
 QBSSET 50.00 kHz
 QBFIN 3700.0 Hz
 POINT 16384
 FREQ 1800.5 Hz
 SCANS 32
 ACQTM 4.550 sec
 PD 2.450 sec
 PW 13.0 us
 IRNUC 1H
 CTEMP 29.4 c
 SLVNT CDCL3
 EXREF 0.00 ppm
 BF 0.11 Hz
 RGAIN 20
 OPERATOR :

Co14-Phen

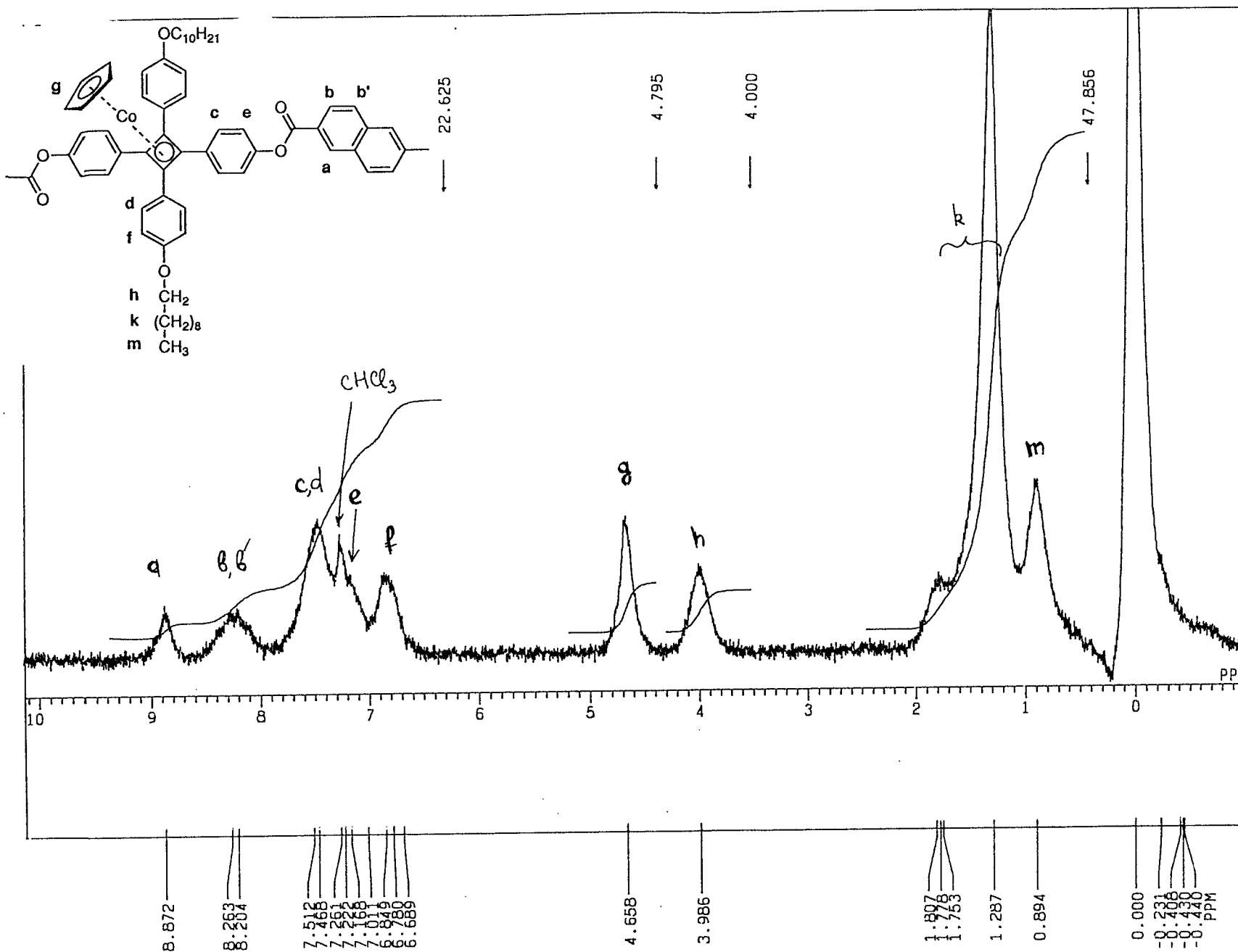
Table 1, Entry 6



09-OCT-96 13:48:04
 QBRJC 1H
 EXMOD RMN
 QFR 89.45 MHz
 QBSET 50.00 kHz
 QBFIN 3700.0 Hz
 POINT 10384
 FREQJ 1800.5 Hz
 SCANS 32
 ACQTM 4.550 sec
 PD 2.450 sec
 PW1 13.0 us
 IRNJC 1H
 CTEMP 28.5 c
 SLVHT CDCL3
 EXREF 0.00 ppm
 BF 0.11 Hz
 RGAIN 20
 OPERATOR :

Co10-Naph

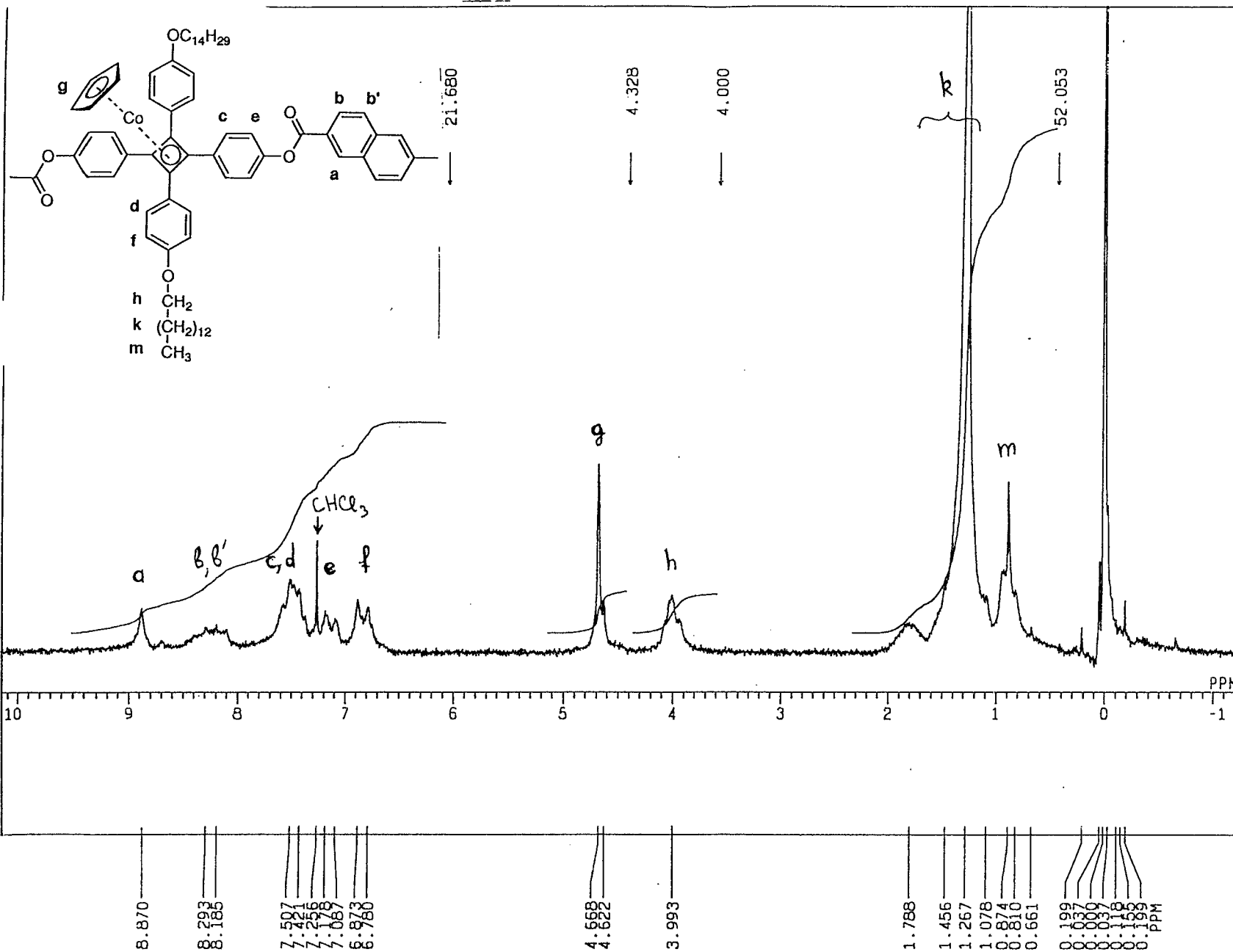
Table 1, Entry 7



09-OCT-96 15:47:00
 Q3NJC 1H
 EXMOD NON
 QFR 99.45 MHz
 QBSSET 50.00 kHz
 QBSFIN 3700.0 Hz
 POINT 16584
 FREQ 1800.5 Hz
 SCANS 128
 ACQTM 4.550 sec
 PD 2.450 sec
 PW 13.0 us
 IR:JC 1H
 CTEMP 28.3 c
 SLVNT CDCL3
 EXREF 0.00 ppm
 BF 0.11 Hz
 RGAIN 23
 OPERATOR :

Co14-Naph

Table 1, Entry 8



09-OCT-90 13 21:44
 OBSJC 1H
 EXMOD NOM
 QFR 89.45 MHz
 OBSSET 50.00 kHz
 OBSFIN 3700.0 Hz
 POINT 16394
 FREQU 1900.5 Hz
 SCANS 32
 ACQTM 4.550 sec
 PD 2.450 sec
 PW 13.0 us
 IR:JC 1H
 CTEMP 29.0 c
 SLVNT CDCL3
 EXREF 0.00 ppm
 BF 0.11 Hz
 RGAIN 20
 OPERATOR :