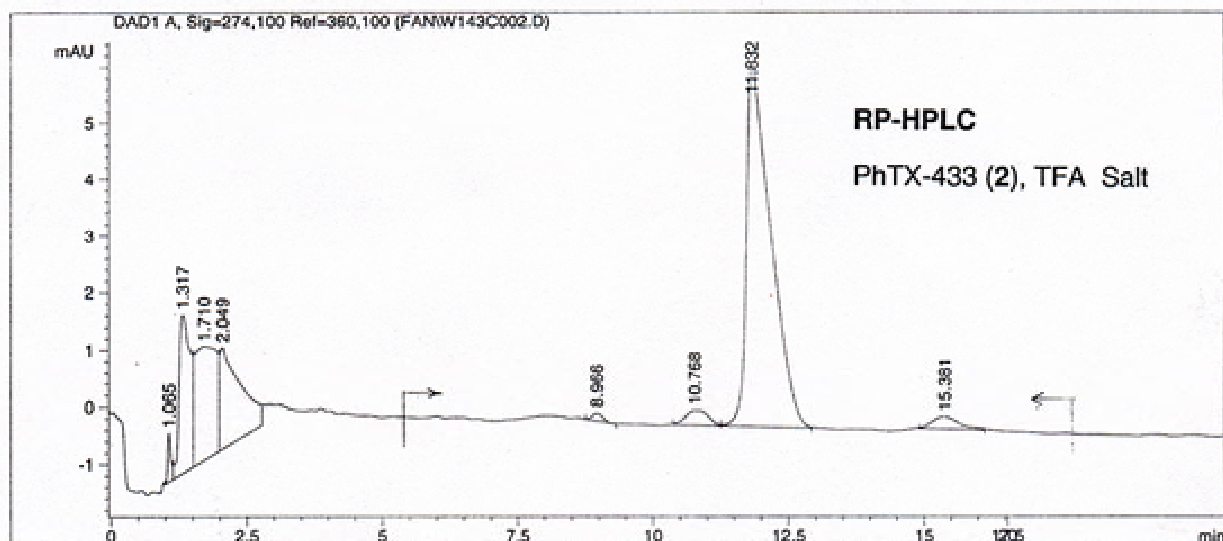


(6) ESMS, NMR and HPLC data for PhTX-433 (2), continued.



=====
 Area Percent Report
 =====

Sorted By : Signal
 Multiplier : 1.0000
 Dilution : 1.0000
 Purity= 198.6078/215.5185X100%= 92%

Signal 1: DAD1 A, Sig=274,100 Ref=360,100

Peak #	RetTime [min]	Type	Width [min]	Area [mAU*s]	Height [mAU]	Area %
1	1.065	VV	0.0596	3.51574	8.61245e-1	0.9750
2	1.317	VV	0.2086	40.08689	2.77405	11.1166
3	1.710	VV	0.3448	54.66890	2.00064	15.1604
4	2.049	VB	0.3260	46.81400	1.78497	12.9821
5	8.966	PP	0.2000	1.79255	1.37546e-1	0.4971
6	10.768	BV	0.3721	7.59059	2.55888e-1	2.1050
7	11.832	VB	0.4229	198.60780	6.42105	55.0764
8	15.381	BB	0.4317	7.52757	2.14335e-1	2.0875

Area= 215.5185

Totals : 360.60404 14.44973