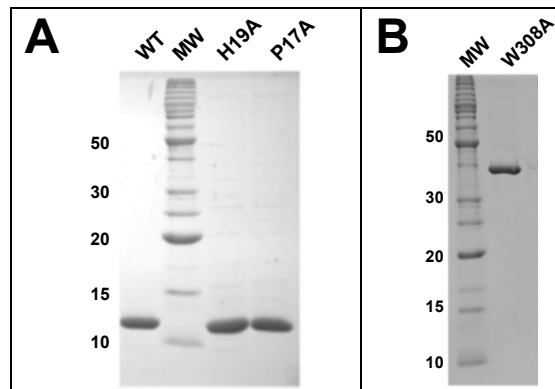


## Supporting Information

**Figure S-1. SDS-PAGE Analysis of Purified Proteins Used in this Study. *Panel A.***

Purified gpD proteins. *Panel B.* Purified gpE-W308A.



**Figure S-2. Characterization of gpD Mutant Proteins.** *Panel A.* Far-UV CD spectra recorded at 4°C. gpD-WT (○), gpD-H17A (◇), gpD-P19A (\*). *Panel B.* Thermal denaturation of gpD-WT (○), gpD-H17A (◇), and gpD-P19A (\*), monitored by CD (230 nm). The raw data were normalized and analyzed as described in *Experimental Procedures* to afford the data presented in **Table 1**.

