

# Highly effective solid electrolyte interphase (SEI)-forming electrolyte additive enabling high voltage lithium ion batteries

Stephan Röser<sup>a</sup>, Andreas Lerchen<sup>c</sup>, Lukas Ibing<sup>a</sup>, Xia Cao<sup>a</sup>, Johannes Kasnatscheew<sup>b</sup>, Frank Glorius<sup>\*,c</sup>, Martin Winter<sup>\*,a,b</sup> and Ralf Wagner<sup>\*,a</sup>

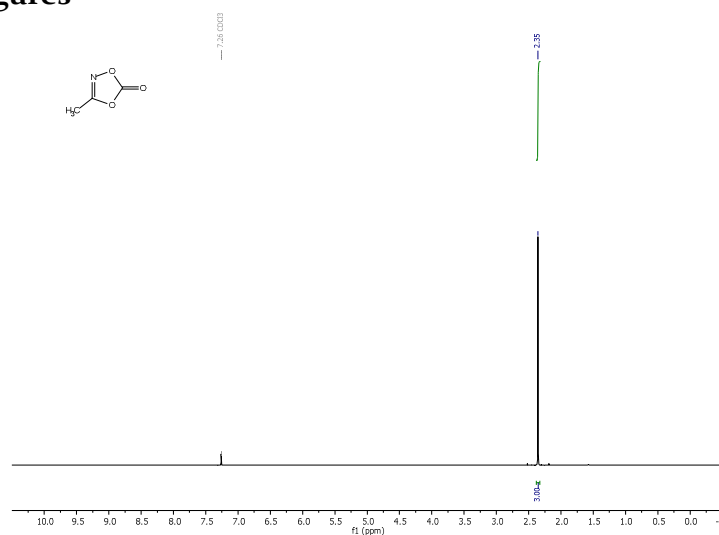
<sup>a</sup> MEET Battery Research Center / Institute of Physical Chemistry, University of Münster, Corrensstrasse 46, 48149 Münster, Germany

<sup>b</sup> Helmholtz-Institute Münster, IEK-12, Forschungszentrum Jülich GmbH, Corrensstrasse 46, 48149 Münster, Germany

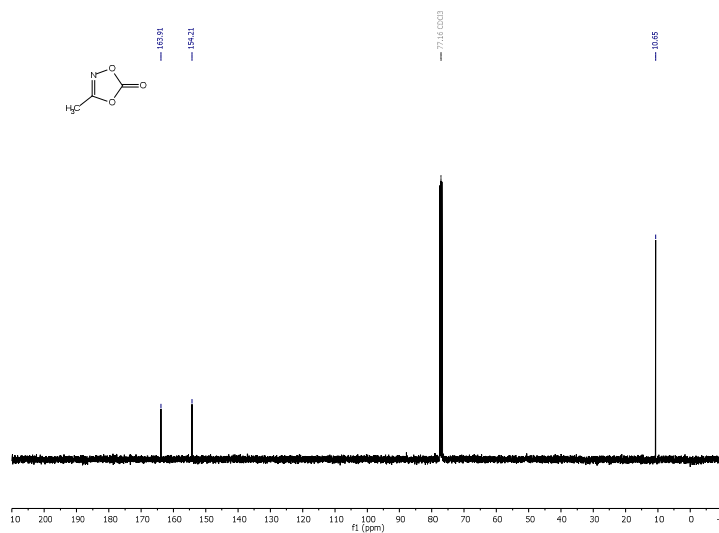
<sup>c</sup> Institute of Organic Chemistry, University of Münster, Corrensstrasse 40, 48149 Münster, Germany

\* Corresponding authors: ralf.wagner@uni-muenster.de, martin.winter@uni-muenster.de, glorius@uni-muenster.de

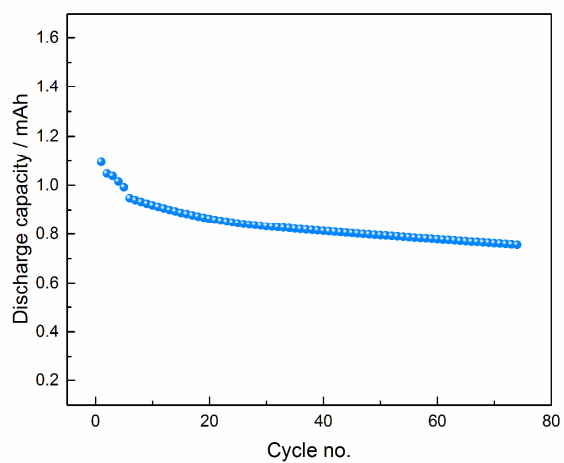
## Supporting Figures



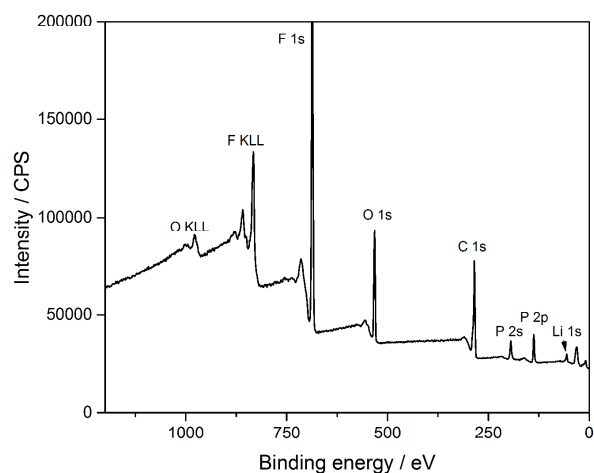
**Figure S1.** <sup>1</sup>H-NMR spectrum of MDO in chloroform-*d* solvent at T = 300 K.



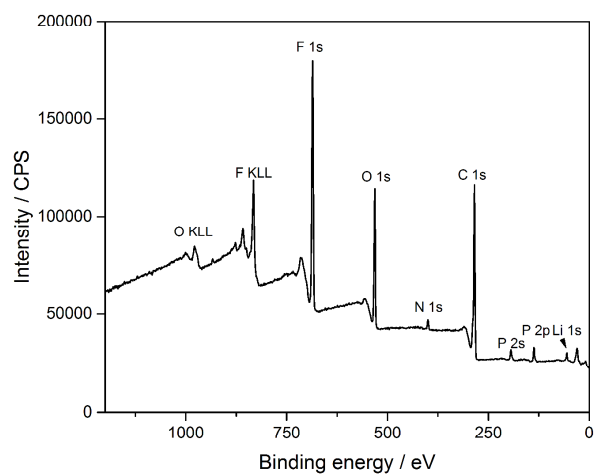
**Figure S2.** <sup>13</sup>C-NMR spectrum of MDO in chloroform-*d* solvent at T = 300 K.



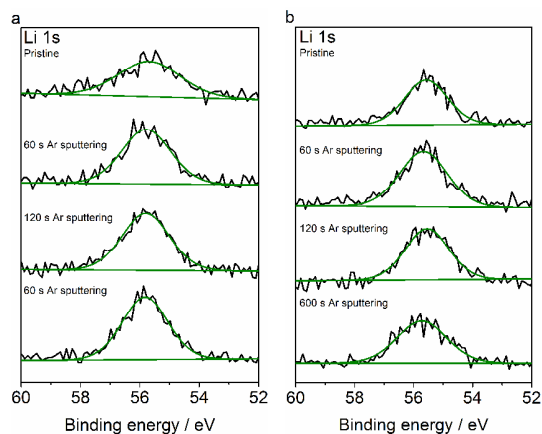
**Figure S3.** Long-term cycling stability of NMC<sub>532</sub>/graphite full cells comprising 1 M LiPF<sub>6</sub> in PC +2 wt.% MDO at 60 °C. Cells were cycled in the voltage range from 2.8 V to 4.2 V.



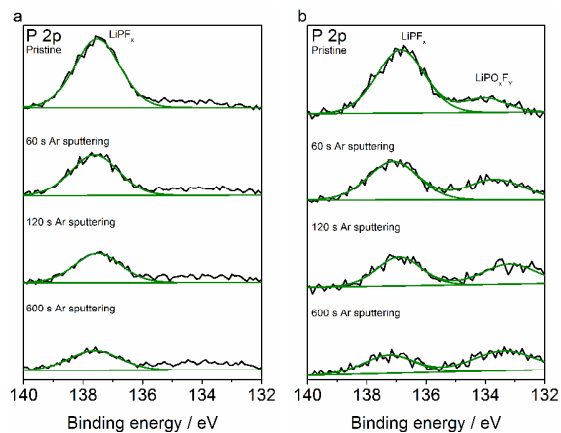
**Figure S4.** XPS survey spectrum of harvested graphite electrode after first charge/discharge in NMC<sub>532</sub>/graphite full cells using 1 M LiPF<sub>6</sub> in PC + 2 wt.% FEC electrolyte formulation. Instead of a pass energy of 40 eV, a pass energy of 160 eV were used for survey spectra.



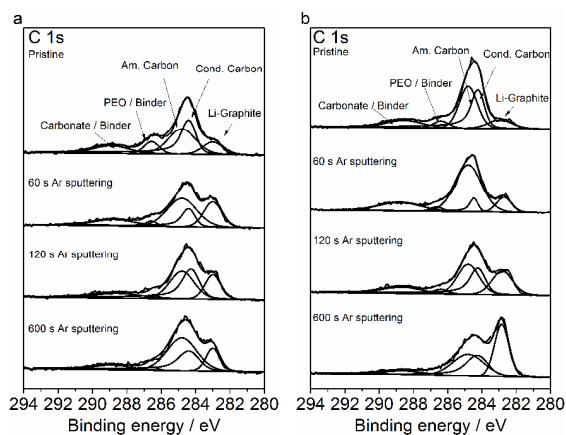
**Figure S5.** XPS survey spectrum of harvested graphite electrode after first charge/discharge in NMC<sub>532</sub>/graphite full cells using 1 M LiPF<sub>6</sub> in PC + 2 wt.% MDO electrolyte formulation. Instead of a pass energy of 40 eV, a pass energy of 160 eV were used for survey spectra.



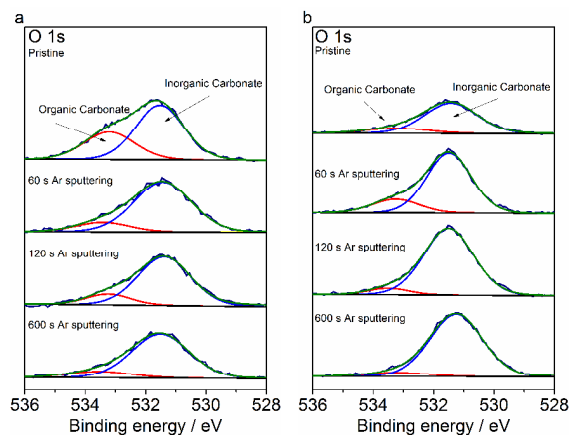
**Figure S6.** Li 1s XPS depth profiling spectra of harvested graphite electrodes after first charge/discharge in NMC<sub>532</sub>/graphite full cells using (a) 1 M LiPF<sub>6</sub> in PC + 2 wt.% FEC and (b) 1 M LiPF<sub>6</sub> in PC + 2 wt.% MDO electrolyte formulation.



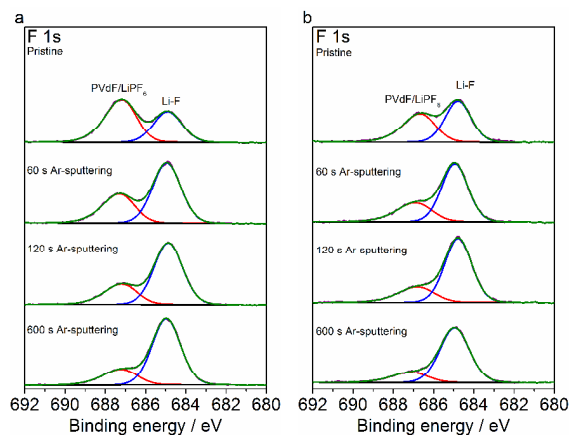
**Figure S7.** P 2p XPS depth profiling spectra of harvested graphite electrodes after first charge/discharge in NMC<sub>532</sub>/graphite full cells using (a) 1 M LiPF<sub>6</sub> in PC + 2 wt.% FEC and (b) 1 M LiPF<sub>6</sub> in PC + 2 wt.% MDO electrolyte formulation.



**Figure S8.** C 1s XPS depth profiling spectra of harvested graphite electrodes after first charge/discharge in NMC<sub>532</sub>/graphite full cells using (a) 1 M LiPF<sub>6</sub> in PC + 2 wt.% FEC and (b) 1 M LiPF<sub>6</sub> in PC + 2 wt.% MDO electrolyte formulation.



**Figure S9.** O 1s XPS depth profiling spectra of harvested graphite electrodes after first charge/discharge in NMC<sub>532</sub>/graphite full cells using (a) 1 M LiPF<sub>6</sub> in PC + 2 wt.% FEC and (b) 1 M LiPF<sub>6</sub> in PC + 2 wt.% MDO electrolyte formulation.



**Figure S10.** F 1s XPS depth profiling spectra of harvested graphite electrodes after first charge/discharge in NMC<sub>532</sub>/graphite full cells using (a) 1 M LiPF<sub>6</sub> in PC + 2 wt.% FEC and (b) 1 M LiPF<sub>6</sub> in PC + 2 wt.% MDO electrolyte formulation.