

Supporting Information:

Role of metal cations in plasmon-catalyzed oxidation: a case study of dimerization of *p*-aminothiophenol

Zhiyang Zhang^{a,b}, Virginia Merk^a, Anja Hermanns^b, Wolfgang E. S. Unger^b, and Janina Kneipp^{a,b*}

^a Humboldt-Universität zu Berlin, Department of Chemistry and School of Analytical Sciences Adlershof (SALSA), Brook-Taylor-Str. 2, 12489 Berlin, Germany

^b BAM Federal Institute for Materials Research and Testing, Richard-Willstätter-Str. 11, 12489 Berlin, Germany

*E-mail: janina.kneipp@chemie.hu-berlin.de

Supporting Figures

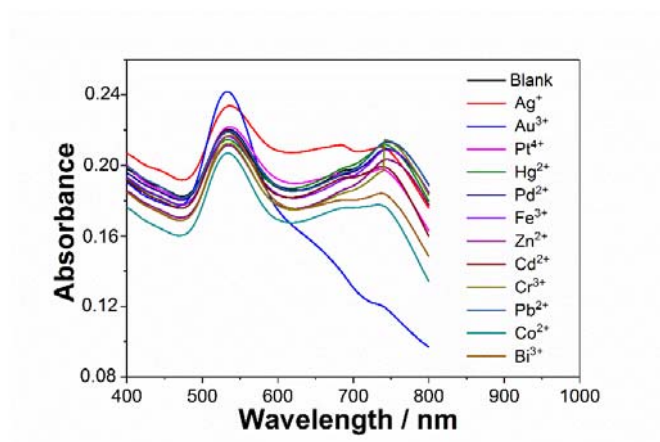


Figure S1 UV-Vis spectra of gold nanoparticles functionalized with PATP at pH 9 in the presence of different metal ions.

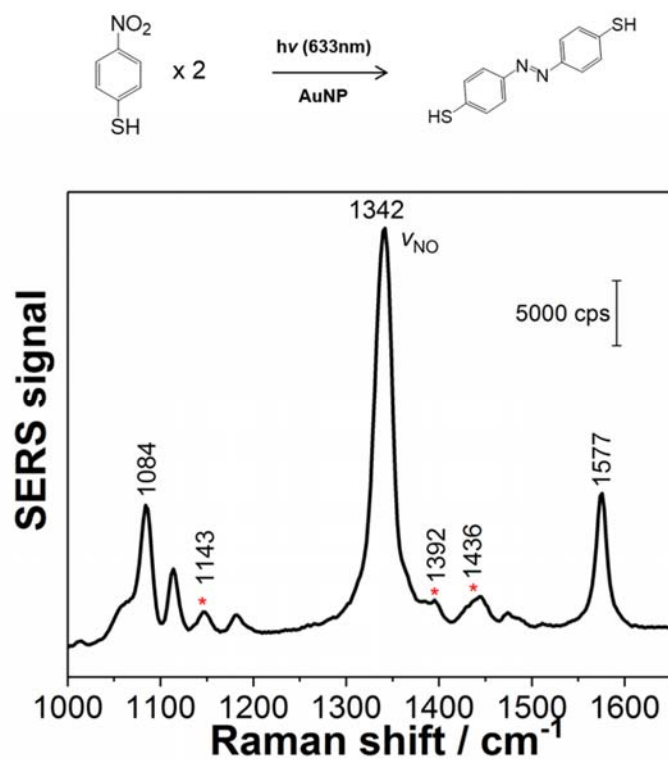


Figure S2 SERS spectra of immobilized gold nanoparticles modified with PNTP after irradiation for 6 s. ($\lambda_{\text{excitation}} = 633 \text{ nm}$; laser intensity: 500 kW/cm^2). * marked peaks are representative of DMAB.

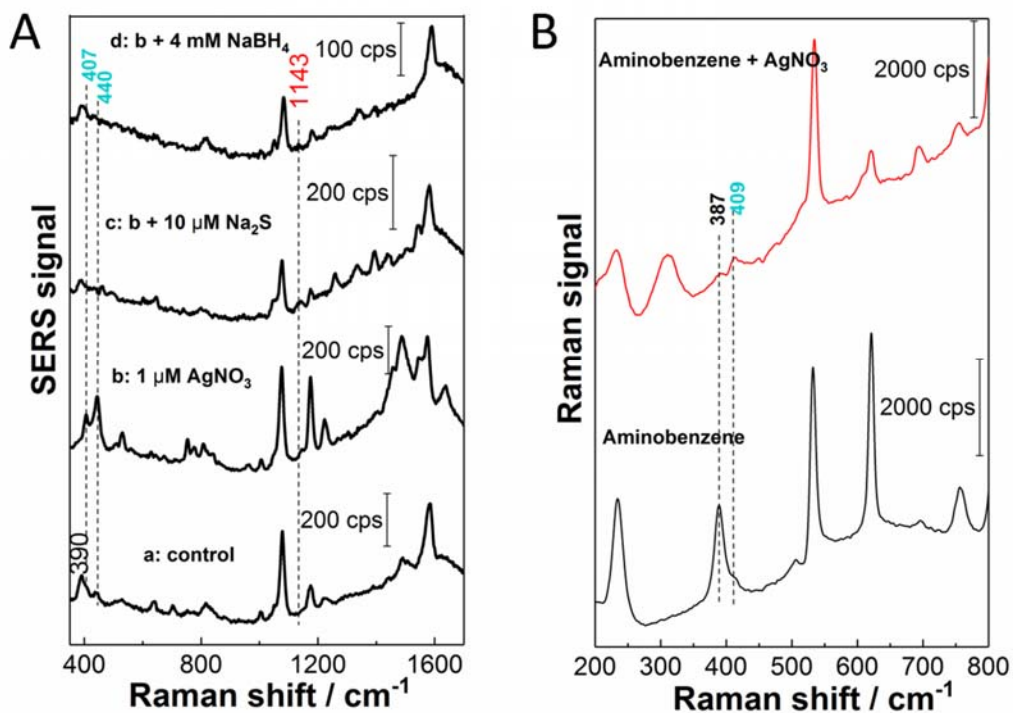


Figure S3 (A) SERS spectra of gold nanoparticles (0.044 nM) with PATP (0.25 μM) at pH 2 (a) before and (b) after incubation with 1.0 μM Ag⁺ (control) (c) with further addition of Na₂S, and (d) NaBH₄. (B) Normal Raman spectra of aminobenzene before (black trace) and after adding AgNO₃ (red trace). ($\lambda_{\text{excitation}} = 633 \text{ nm}$; laser intensity: 500 kW/cm²)

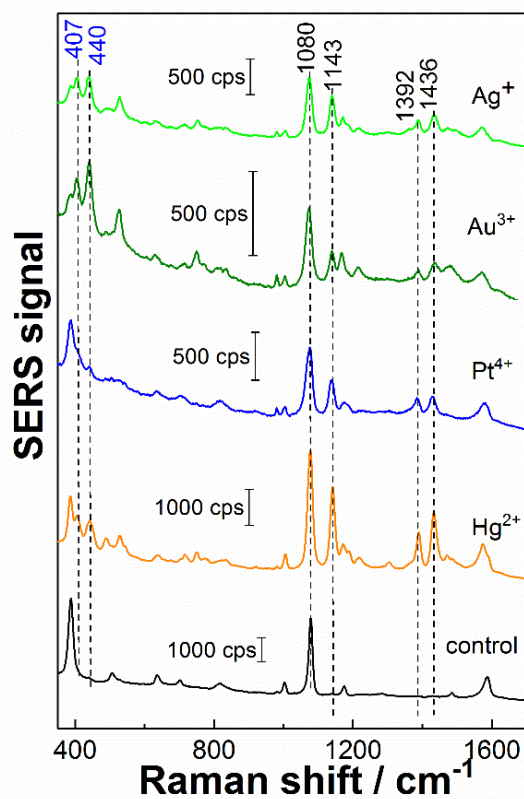


Figure S4 SERS spectra (averages of 10 measurements) of gold nanoparticles with PATP at pH 9 before and after incubation with 1 μM Ag⁺, 2 μM Au³⁺, 5 μM Pt⁴⁺ and 10 μM Hg²⁺ ions. ($\lambda_{\text{exc}} = 785 \text{ nm}$; laser intensity: $1.84 \times 10^6 \text{ W/cm}^2$, acquisition time 1 s).

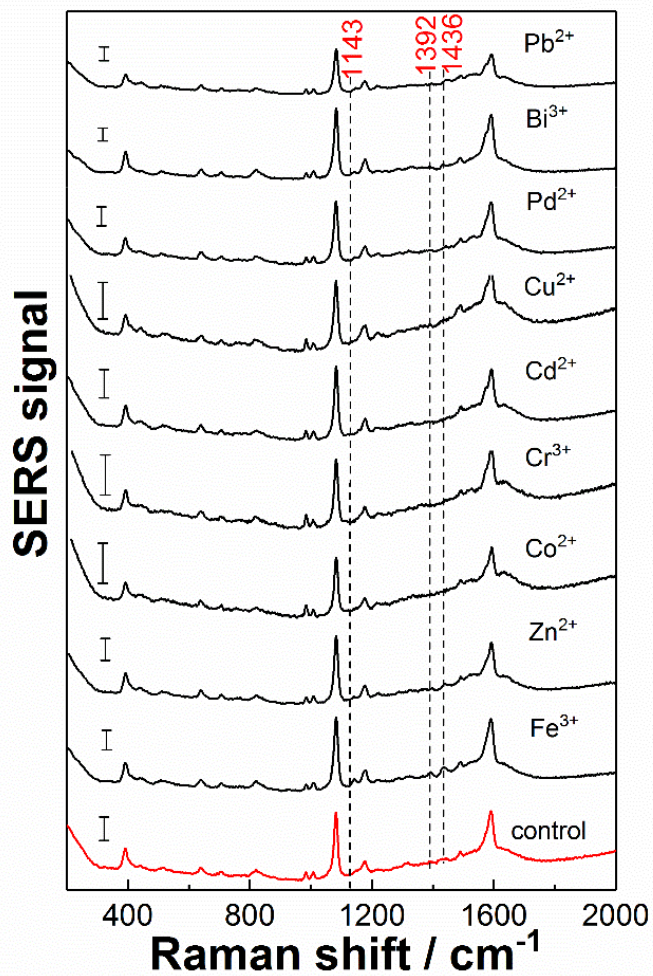


Figure S5 SERS spectra (averages of 10 measurements) of gold nanoparticles with PATP at pH 9 before and after incubation with different metal ions for 10 min at room temperature. ($\lambda_{\text{excitation}} = 633 \text{ nm}$; laser intensity: 500 kW/cm^2 , acquisition time 1s) Scale bars: 200 cps.

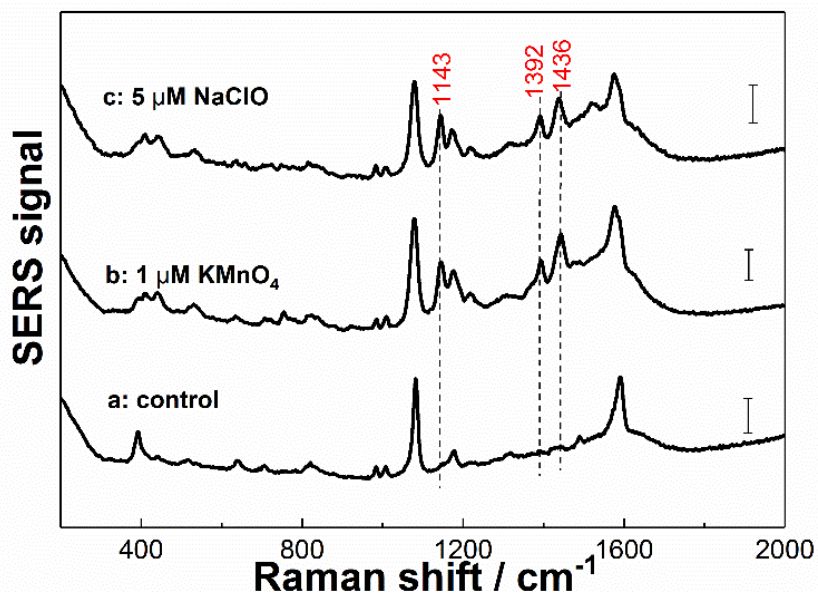


Figure S6 SERS spectra of gold nanoparticles with PATP at pH 9 before and after incubation with 1.0 μM KMO₄ and 5 μM NaClO for 10 min at room temperature. ($\lambda_{\text{exc}} = 633 \text{ nm}$; laser intensity: 500 kW/cm², acquisition time 1 s). Scale bars: 200 cps

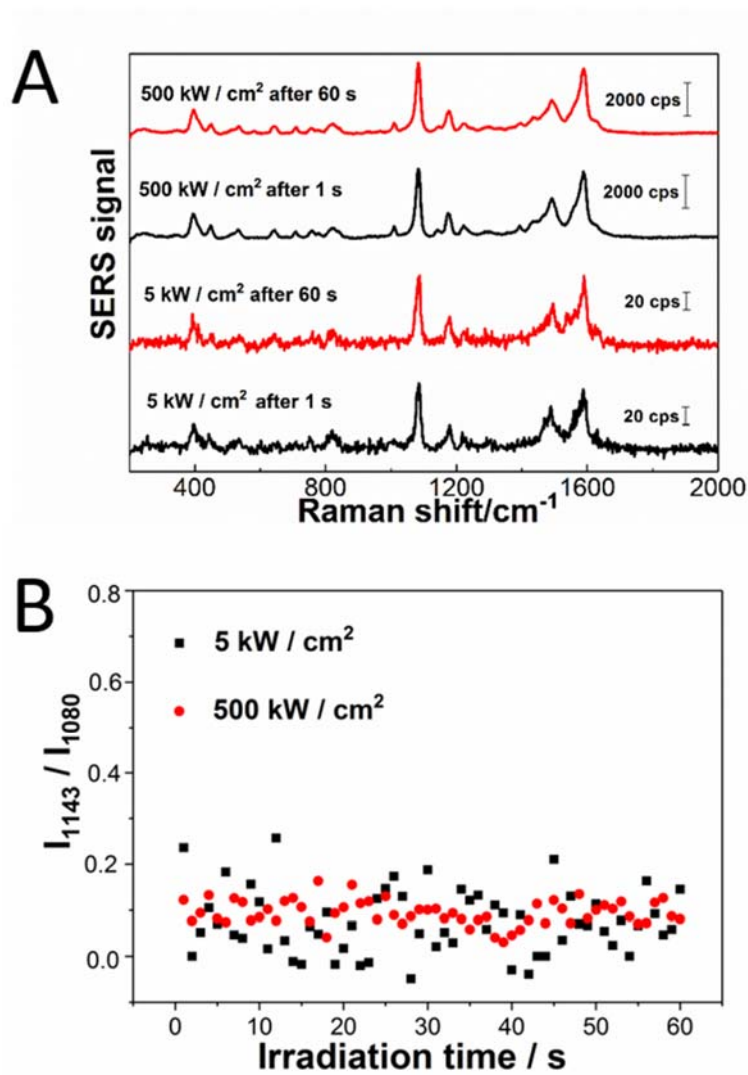


Figure S7 (A) SERS spectra of gold nanoparticles with PATP obtained after irradiation with a laser intensity of 5 kW/cm² and 500 kW/cm² after 1 s (black traces) and 60 s (red traces), respectively. (B) Signal intensity ratio I_{1143}/I_{1080} in the SERS spectra of gold nanoparticles with PATP in the absence of Ag⁺ at pH 9 as a function of irradiation time using an intensity of 5 kW/cm² (black squares) and 500 kW/cm² (red dots). ($\lambda_{\text{excitation}} = 633$ nm, acquisition time: 1 s) Spectra were excited with the same laser intensity as that used for irradiation.

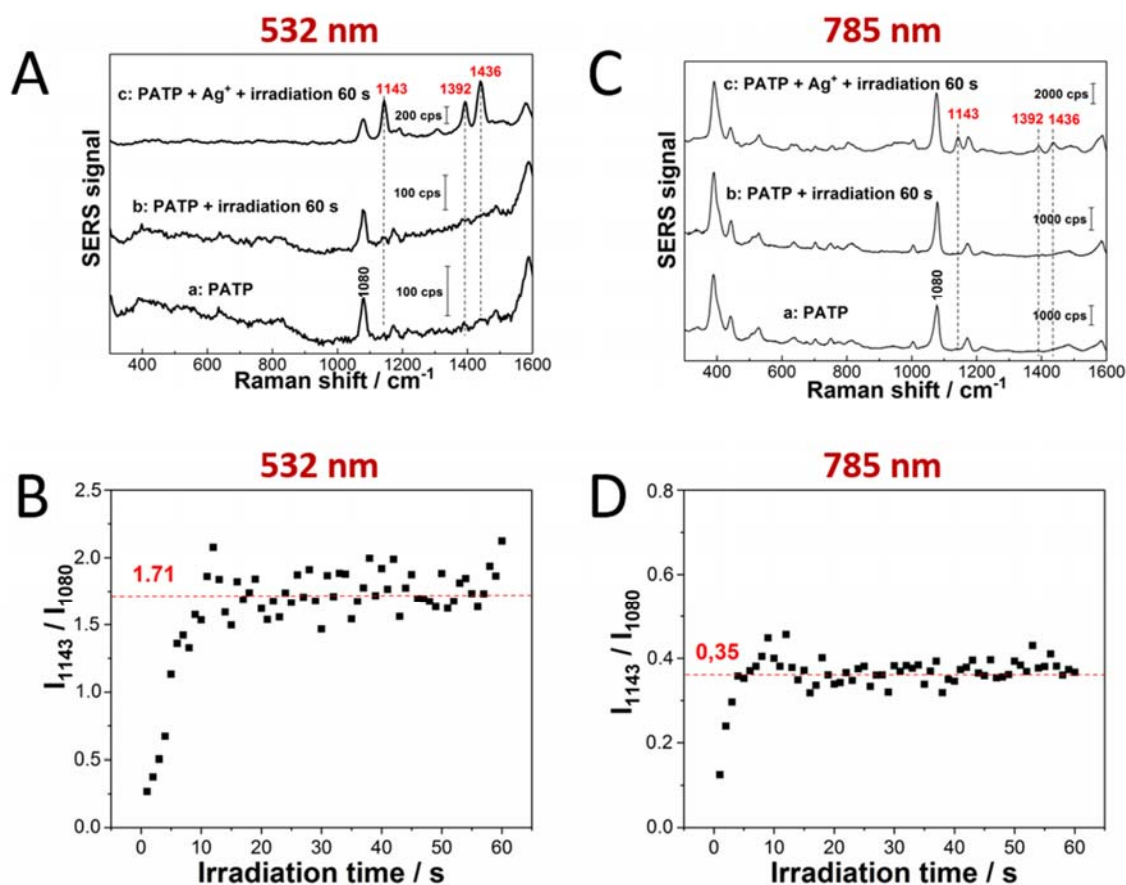


Figure S8 SERS spectra of gold nanoparticles with PATP in the absence and presence of Ag^+ before and after irradiation for 60 s using **(A)** an excitation laser at 532 nm with an intensity of $1.4 \times 10^6 \text{ W/cm}^2$ and **(C)** an excitation laser at 785 nm with an intensity of $4.6 \times 10^5 \text{ W/cm}^2$ **(B)** and **(D)** Signal intensity ratio I_{1143}/I_{1080} determined from SERS spectra obtained in the presence of Ag^+ as a function of irradiation time with the two laser wavelengths, respectively.

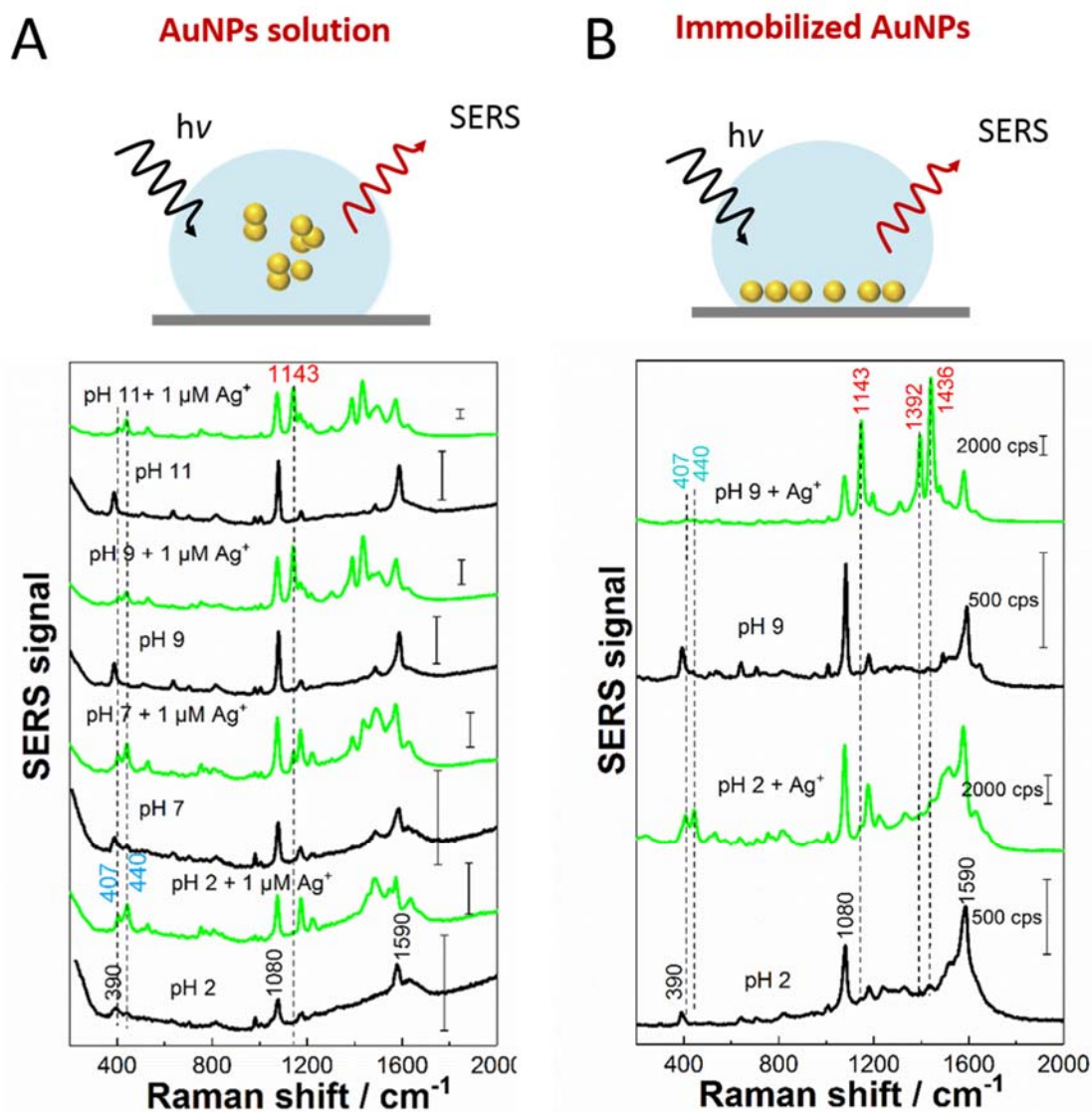


Figure S9 (A) SERS spectra of gold nanoparticles with PATP in the absence and presence of Ag^+ at pH 2, pH 7, pH 9, and pH 11, respectively ($\lambda_{\text{excitation}} = 633 \text{ nm}$; laser intensity: 500 kW/cm^2 , acquisition time 1s). Scale bars: 200 cps. (B) SERS spectra of immobilized gold nanoparticles functionalized with PATP on a glass slide before and after incubation with Ag^+ at pH 2 and pH 9 ($\lambda_{\text{excitation}} = 633 \text{ nm}$, laser intensity 50 W/cm^2 , acquisition time: 1 s).

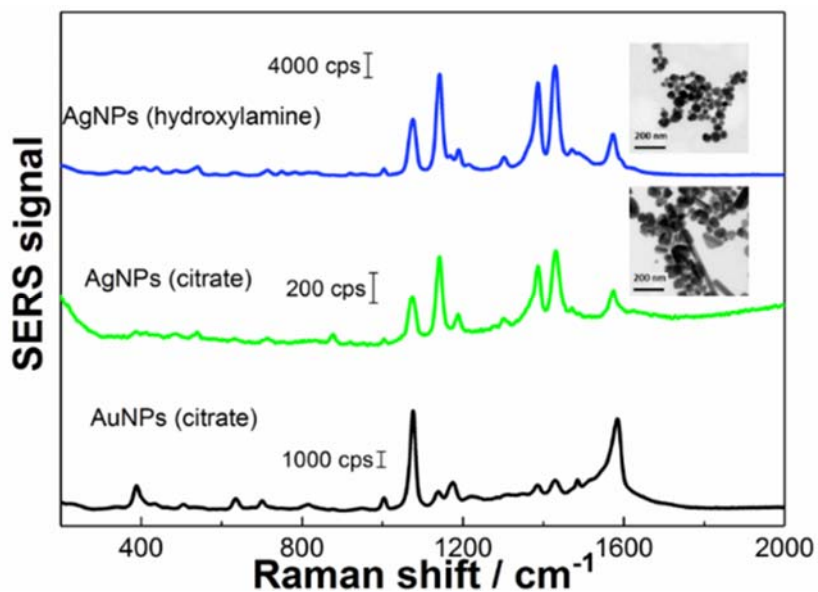


Figure S10 SERS spectra of citrate reduced gold nanoparticles, citrate reduced¹ silver nanoparticles, and hydroxylamine reduced² silver nanoparticles with PATP. Insets: TEM images of citrate reduced and hydroxylamine reduced silver nanoparticles. ($\lambda_{\text{excitation}} = 633 \text{ nm}$; laser intensity: 500 kW/cm^2 , acquisition time 1 s).

References

- (1) Lee, P.; Meisel, D. *J. Phys. Chem.* **1982**, *86*, 3391-3395.
- (2) Leopold, N.; Lendl, B. *J. Phys. Chem. B* **2003**, *107*, 5723-5727.