

Supporting Information

Polyelectrolyte Functional Bilayers for the Removal of Model Emerging Contaminants

Jain M. Thomas[§], Vishnu.N.R[‡], C.T. Aravindakumar^{‡,ε} and Usha K Aravind^{§}*

School of Chemical Sciences[§], Inter University Instrumentation Centre[‡], School of Environmental Sciences^ε, Advanced Centre of Environmental Studies and Sustainable Development[§], Mahatma Gandhi University, P.D. Hills P.O., 686560 kottayam, India

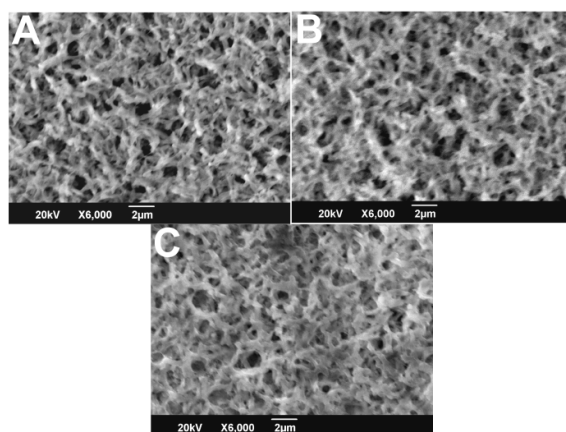


Figure S1. SEM images of bare membrane (A) and CHI/PSS coated nylon membrane (B and C) having one (B) and five (C) functional layers.

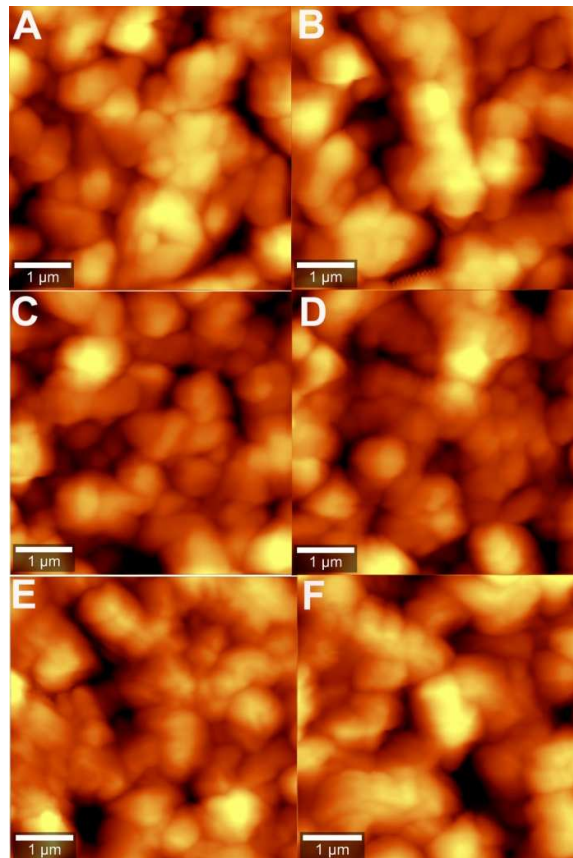


Figure S2. AFM images of LD ultrafiltered CHI/PSS two functional layer coated nylon membrane in presence of chloride (A) phosphate (B) sulphate (C) nitrate (D) SDS (E) and HA (F).

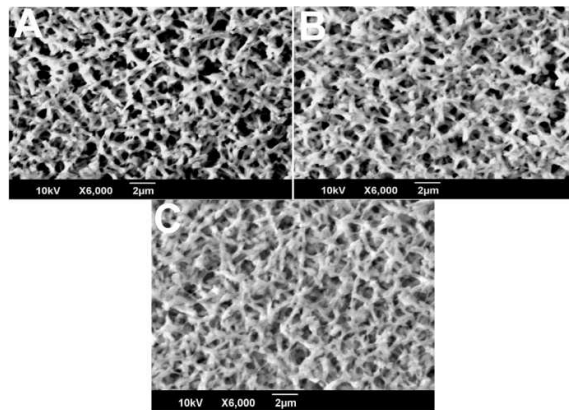


Figure S3. SEM images of LD ultrafiltered CHI/PSS two functional layer coated nylon membrane at feed pHs of pH 2 (A) pH 4 (B) and pH 6 (C).

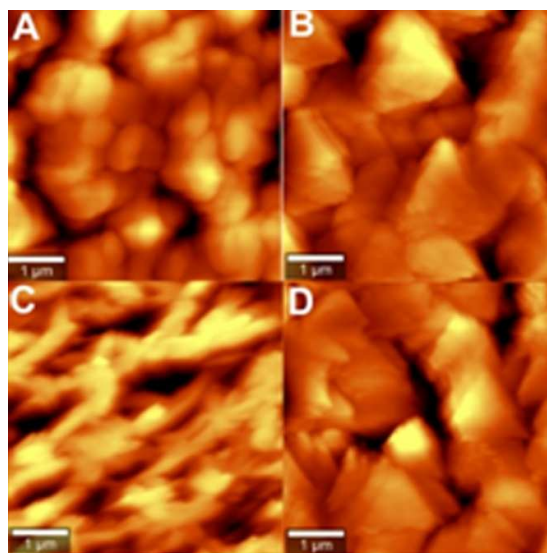


Figure S4. AFM images of CHI/PSS functional layer membranes after ultrafiltration with LD (A) and IBU (C) respectively and their corresponding repeated filtered membranes (B and D).