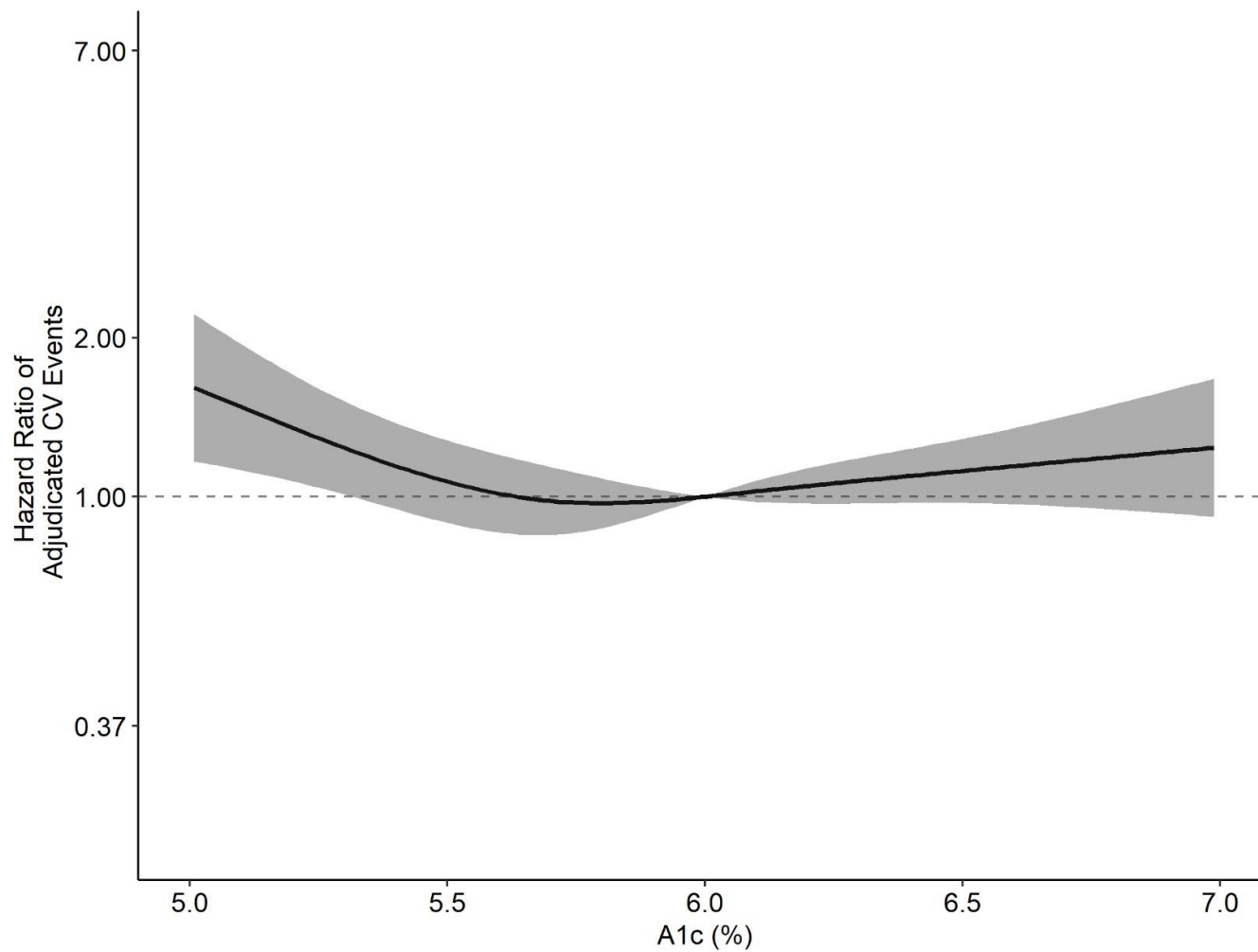
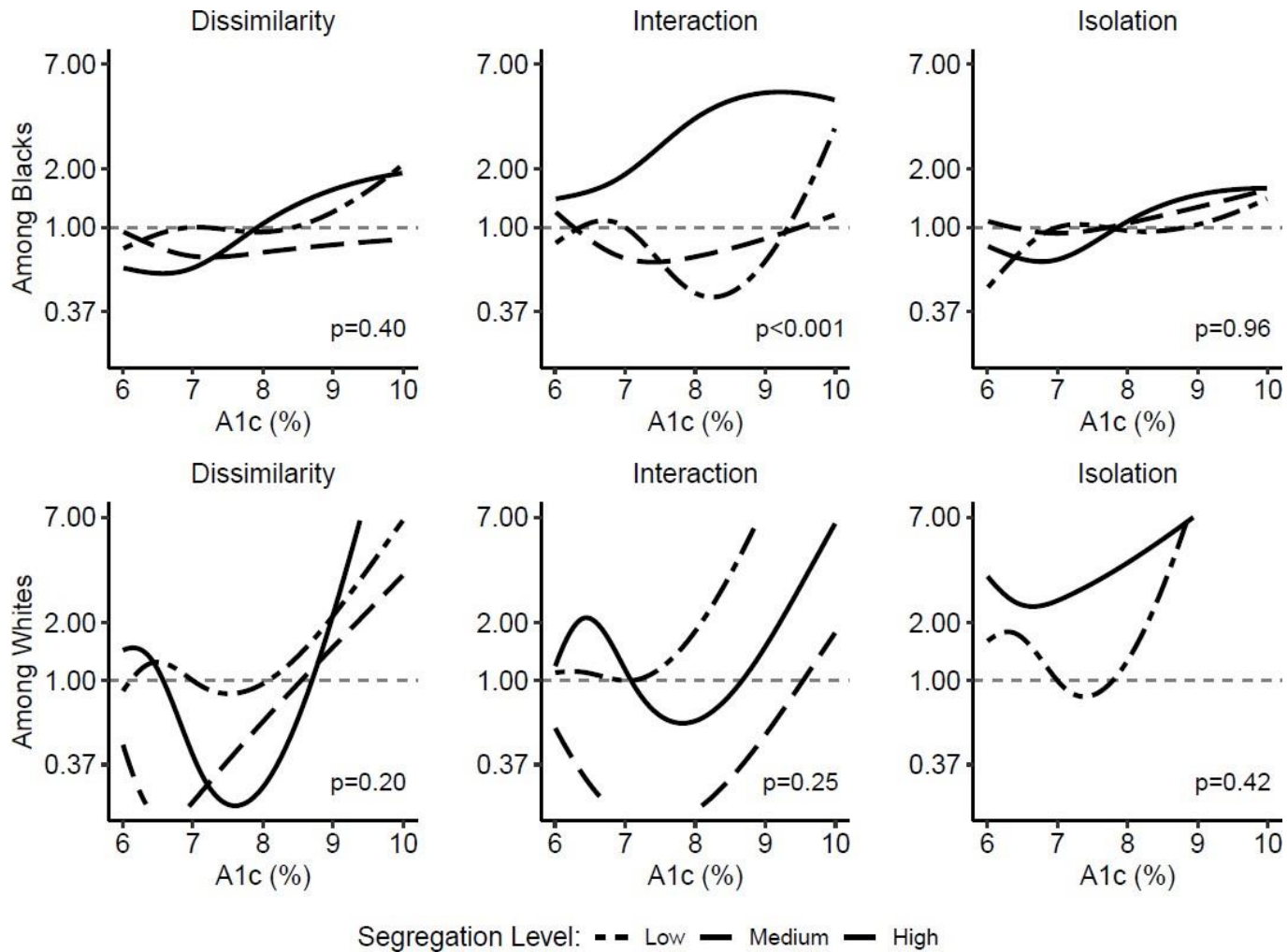


SUPPLEMENTAL MATERIAL: Supplementary Figure S1: Hazard Ratio for the Association of A1c and Adjudicated CVD events in Fully adjusted Model, including Residential Segregation, in Participants without Diabetes



Supplemental Figure S2: Hazard ratios for the Association between A1c and CVD according to tertiles of Racial Residential Segregation Measures (dissimilarity, interaction, isolation) in Individuals with Diabetes, stratified by race



SUPPLEMENTARY TABLE S1: CV Risk Factor Profile in the Sub-cohort by Level of Residential Segregation as Measured by the Interaction Index

CV RISK FACTOR	LOW	MEDIUM	HIGH
	SEGREGATION	SEGREGATION	SEGREGATION
	[0.486 - 0.994]	[0.314 - 0.486]	[0.101 - 0.314]
Sample Size (Unweighted)	N = 687	N = 702	N = 747
Systolic BP (<i>mmHg</i>), Mean (SD)	125 (14.8)	126 (15.1)	130 (18.0)
Body Mass Index (<i>kg/m²</i>), Mean (SD)	28.7 (5.51)	29.6 (6.08)	30.0 (6.16)
LDL Cholesterol (<i>mg/dL</i>), Mean (SD)	118 (33.0)	114 (35.5)	117 (34.5)
HDL Cholesterol (<i>mg/dL</i>), Mean (SD)	50.8 (14.9)	53.1 (16.7)	54.2 (16.1)
C-reactive Protein (<i>mg/L</i>), Median (Inner Quartiles)	1.93 [0.94-4.27]	2.47 [1.07-4.98]	2.16 [0.98-5.14]