

Supplementary Appendix

Supplement to: Nielsen J, Cunningham SA, Ali MK, Patel SA. **Spouse's diabetes and incidence of depression and anxiety: A 20 year prospective study**

Contents

Figure S1. Flowchart: Selection of the Study Population Selection from the Panel Study of Income Dynamics Cohort.

Table S1. Incidence of depression and/or anxiety according to spouse's diabetes status over the period 1999-2017: Additional Adjustment for the study participants own chronic condition status.

Table S2. Incidence rate ratios of depression and/or anxiety according to spouse's diabetes status, stratified by sex.

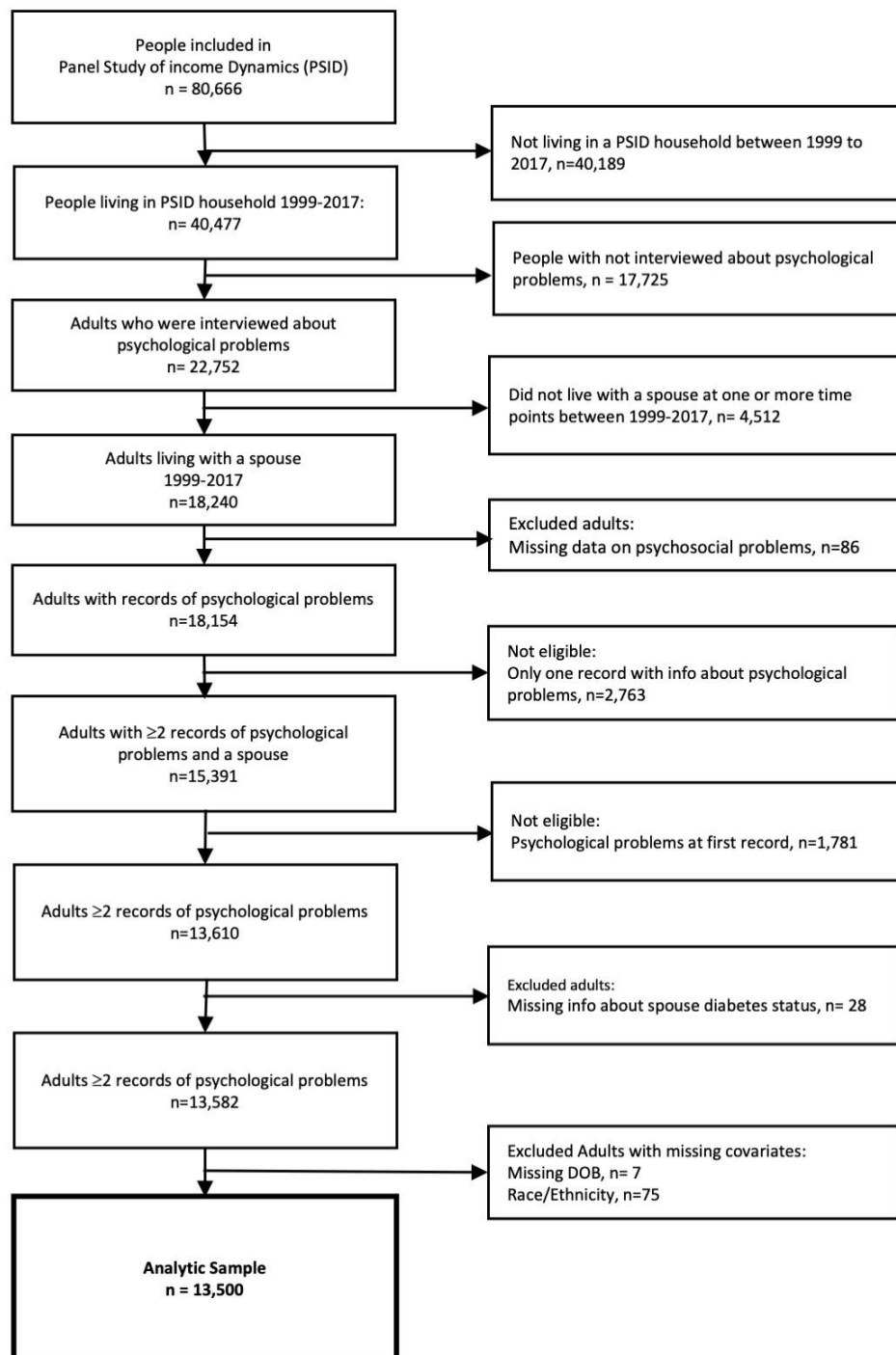


Figure S1. Flowchart: Selection of the Study Population Selection from the Panel Study of Income Dynamics Cohort.

Table S1. Incidence of depression and/or anxiety according to spouse's diabetes status over the period 1999-2017: Additional Adjustment for the study participants own chronic condition status

Spouse's diabetes status	Incidence rate ratio (95% CI)		
	Adjustment: age, sex, race	Adjustment: + own diabetes	Adjustment: + own other chronic conditions
Spouse has no diabetes	Ref	Ref	Ref
Spouse has diabetes	1.24 (1.01;1.53)	1.19 (0.97;1.47)	1.18 (0.97;1.45)
<i>Diabetes with limitations</i>			
No diabetes	Ref	Ref	Ref
Diabetes without limitations	1.07 (0.84;1.36)	1.03 (0.80;1.31)	1.03 (0.81;1.32)
Diabetes with limitations	1.89 (1.35;2.67)	1.77 (1.26;2.50)	1.66 (1.17;2.34)
<i>Diabetes and comorbidities</i>			
No diabetes no other diseases	Ref	Ref	Ref
No diabetes but other diseases	2.18 (1.85;2.58)	2.16 (1.83;2.55)	2.04 (1.72;2.41)
Diabetes no other diseases	1.09 (0.81;1.47)	1.05 (0.78;1.42)	1.07 (0.79;1.44)
Diabetes and other diseases	2.34 (1.78;3.09)	2.23 (1.69;2.64)	2.07 (1.56;2.73)
<i>Duration¹</i>			
No diabetes	Ref	Ref	Ref
Prevalent diabetes	1.33 (1.01;1.75)	1.27 (0.96;1.67)	1.25 (0.95;1.64)
Incident diabetes	1.16 (0.87;1.55)	1.11 (0.84;1.48)	1.11 (0.83;1.48)

Table S2. Incidence rate ratios of depression and/or anxiety according to spouse's diabetes status, stratified by sex

Spouse's diabetes status	Women			Men				
	Incidence rate per 1000 Person-year	IRR Adjustment level 1	IRR Adjustment level 2	IRR Adjustment level 3	Incidence rate per 1000 Person-year	IRR Adjustment level 1	IRR Adjustment level 2	IRR Adjustment level 3
Spouse has no diabetes	7.7 (7.0;8.5)	Ref	Ref	Ref	5.3 (4.7;5.9)	Ref	Ref	Ref
Spouse has diabetes	8.3 (6.0;10.6)	1.07 (0.80;1.44)	1.01 (0.75;1.36)	0.99 (0.73;1.34)	8.1 (5.9;10.2)	1.52 (1.14;2.03)	1.48 (1.10;1.97)	1.42 (1.06;1.90)
<i>Diabetes with limitations</i>								
No diabetes	7.7 (7.0;8.5)	Ref	Ref	Ref	5.3 (4.7;5.9)	Ref	Ref	Ref
Diabetes without limitations	6.9 (4.6;9.3)	0.90 (0.63;1.28)	0.86 (0.60;1.22)	0.85 (0.60;1.22)	7.1 (4.8;9.3)	1.33 (0.95;1.87)	1.30 (0.92;1.82)	1.26 (0.90;1.77)
Diabetes with limitations	13.2 (7.0;19.4)	1.71 (1.05;2.76)	1.54 (0.95;2.50)	1.46 (0.90;2.36)	11.7 (6.2;17.1)	2.20 (1.36;3.57)	2.12 (1.31;3.44)	1.98 (1.22;3.23)
<i>Diabetes and comorbidities</i>								
No diabetes no other diseases	7.0 (6.2;7.7)	Ref	Ref	Ref	4.0 (3.4;4.5)	Ref	Ref	Ref
No diabetes but other diseases	12.6 (9.9;15.4)	1.81 (1.42;2.32)	1.78 (1.39;2.28)	1.75 (1.37;2.24)	10.8 (8.9;12.8)	2.72 (2.16;3.43)	2.70 (2.14;3.40)	2.64 (2.09;3.33)
Diabetes no other diseases	5.7 (3.3;8.2)	0.83 (0.53;1.28)	0.78 (0.50;1.20)	0.77 (0.49;1.18)	6.2 (3.8;8.7)	1.57 (1.04;2.37)	1.54 (1.02;2.32)	1.49 (0.99;2.26)
Diabetes and other diseases	14.3 (9.0;19.7)	2.06 (1.39;3.05)	1.93 (1.30;2.87)	1.87 (1.26;2.77)	11.6 (7.4;15.8)	2.92 (1.97;4.33)	2.81 (1.89;4.17)	2.67 (1.79;3.97)
<i>Duration¹</i>								
No diabetes	7.7 (7.0;8.5)	Ref	Ref	Ref	5.2 (4.7;5.9)	Ref	Ref	Ref
Prevalent diabetes	7.3 (4.2;10.4)	0.94 (0.61;1.46)	0.90 (0.58;1.39)	0.87 (0.56;1.34)	9.8 (6.5;13.2)	1.86 (1.30;2.65)	1.78 (1.25;2.55)	1.71 (1.19;2.44)
Incident diabetes	9.2 (5.8;12.5)	1.19 (0.82;1.73)	1.11 (0.76;1.62)	1.10 (0.76;1.61)	6.2 (3.5;8.9)	1.17 (0.75;1.83)	1.15 (0.74;1.79)	1.12 (0.72;1.74)

Values are presented as incidence rate ratios with 95% confidence intervals.

Adjustment level 1: Age, race/ethnicity

Adjustment level 2: Age, race/ethnicity, own diabetes status

Adjustment level 3: Age, race/ethnicity, household poverty status

¹ Duration of spouse's diabetes: Prevalent diabetes is defined as living with a spouse with diabetes at study entry; Incident diabetes is defined as living with or moving in with a spouse who developed diabetes.