

Supplemental Materials

Androgens and Development of Post-Transplantation Diabetes Mellitus in Male Kidney Transplant Recipients: A post-hoc analysis of a prospective study

Suzanne P. Stam, MD¹; Sara Sokooti, MD¹; Michele F. Eisenga, MD,PhD¹; Anna van der Veen, MSc²; Antonio W. Gomes-Neto, MD¹; Peter R. van Dijk, MD,PhD³; Jelmer J. van Zanden, PhD⁴; Michel J. Vos, PhD²; Ido P. Kema, PhD²; André P. van Beek, MD,PhD³; Stephan J. Bakker, MD,PhD¹; and TransplantLines Investigators⁵

¹ Department of Internal Medicine, Division of Nephrology, University of Groningen, University Medical Center Groningen, Groningen, The Netherlands

² Department of Laboratory Medicine, University of Groningen, University Medical Center Groningen, Groningen, The Netherlands

³ Department of Internal Medicine, Division of Endocrinology, University of Groningen, University Medical Center Groningen, Groningen, The Netherlands

⁴ Certe, Department of Clinical Chemistry, Martini Hospital, Groningen, The Netherlands

⁵ Groningen Transplant Center, University of Groningen, University Medical Center Groningen, Groningen, The Netherlands

Corresponding author:

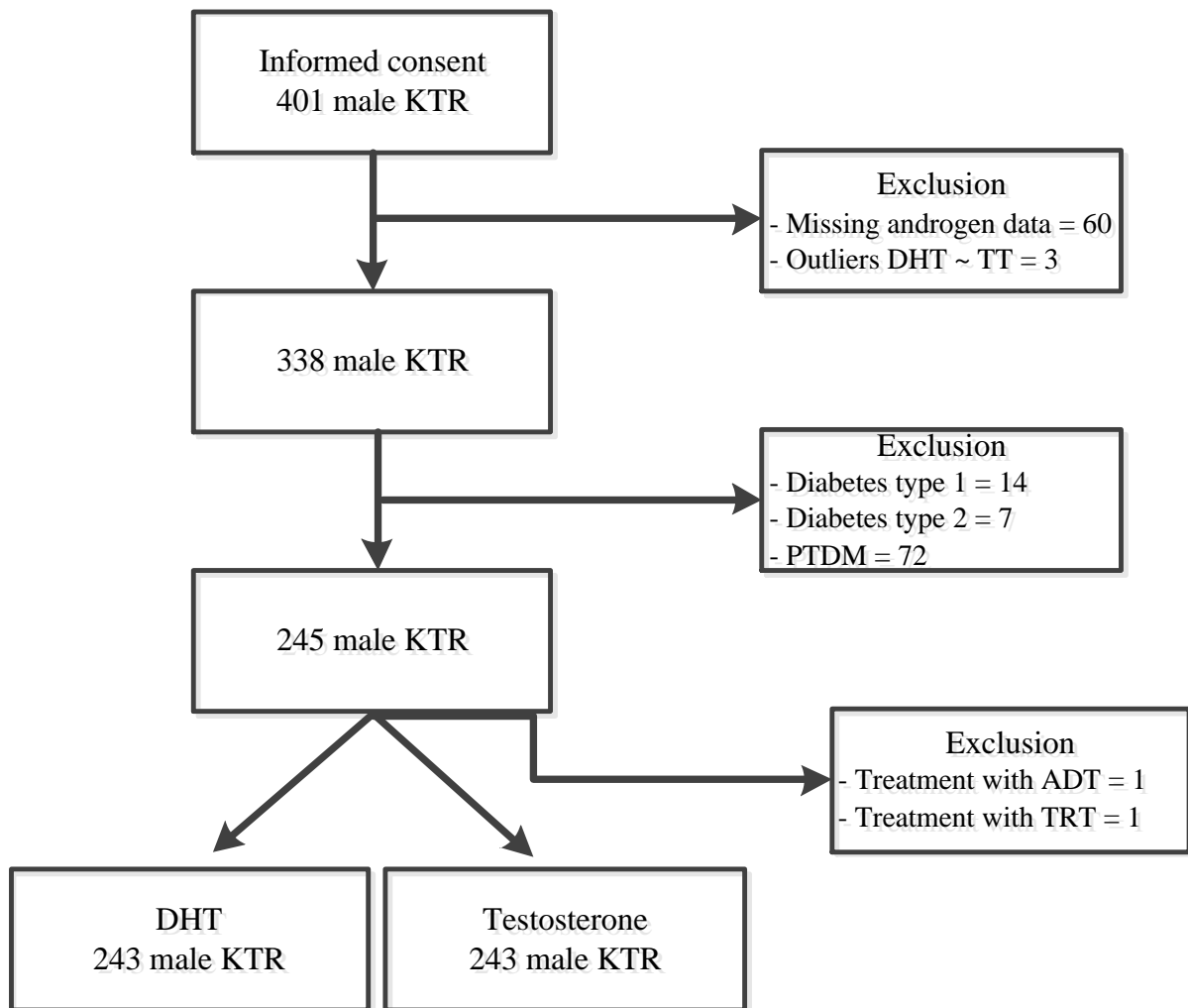
Suzanne P. Stam

Department of Internal Medicine, Division of Nephrology
University Medical Center Groningen

P.O. Box 30.001, 9700 RB Groningen, the Netherlands

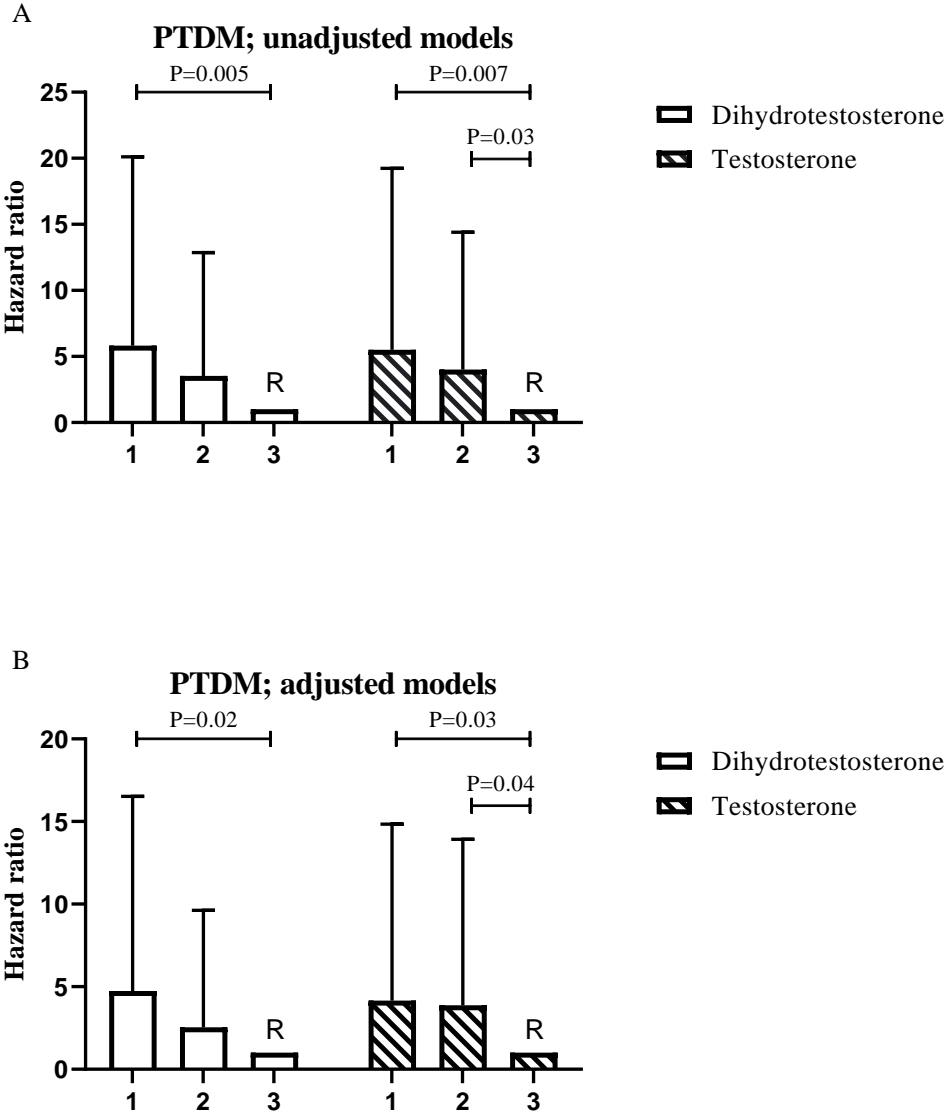
Phone: 0031 050 361 72 93, Email: s.p.stam@umcg.nl

Supplemental figure S1.



Supplemental figure S1. STROBE flow diagram. ADT, androgen deprivation therapy; DHT, dihydrotestosterone; KTR, kidney transplant recipients; PTDM, post-transplantation diabetes mellitus; TT, total testosterone; TRT, testosterone replacement therapy.

Supplemental figure S2.



Supplemental Figure S2. Bars represent hazard ratio with 95%CI. (A) Crude analysis. (B) Model 6, adjustment for baseline fasting plasma glucose levels and HbA_{1c} levels. The 3rd tertile served as a reference point. PTDM, post-transplantation diabetes mellitus

Supplemental Figure S3.

STROBE Statement

Item	Recommendation	Reported on manuscript page
Title and abstract		
1	(a) Indicate the study's design with a commonly used term in the title or the abstract (b) Provide in the abstract an informative and balanced summary of what was done and what was found	1(a) p. 1, 4 1(b) p. 4
Introduction		
Background/rationale	2 Explain the scientific background and rationale for the investigation being reported	2 p. 5
Objectives	3 State specific objectives, including any prespecified hypotheses	3 p. 5, 6
Methods		
Study design	4 Present key elements of study design early in the paper	4 p. 7
Setting	5 Describe the setting, locations, and relevant dates, including periods of recruitment, exposure, follow-up, and data collection	5 p. 7(FU p. 9)
Participants	6 (a) Cohort study—give the eligibility criteria, and the sources and methods of selection of participants. Describe methods of follow-up Case-control study—give the eligibility criteria, and the sources and methods of case ascertainment and control selection. Give the rationale for the choice of cases and controls Cross-sectional study—give the eligibility criteria, and the sources and methods of selection of participants (b) Cohort study—for matched studies, give matching criteria and number of exposed and unexposed Case-control study—for matched studies, give matching criteria and the number of controls per case	6(a) p. 7 6(b) N.A.
Variables	7 Clearly define all outcomes, exposures, predictors, potential confounders, and effect modifiers. Give diagnostic criteria, if applicable	7 p. 9-10
Data sources/measurement	8* For each variable of interest give sources of data and details of methods of assessment (measurement). Describe comparability of assessment methods if there is more than one group	8 p. 7-9 9 p. 10 10 p. 7, supplemental material
Bias	9 Describe any efforts to address potential sources of bias	11 p. 9, 10
Study size	10 Explain how the study size was arrived at	12(a) p. 9, 10
Quantitative variables	11 Explain how quantitative variables were handled in the analyses. If applicable, describe which groupings were chosen, and why	12(b) p. 10, 14 12(c) p. 7
Statistical methods	12 (a) Describe all statistical methods, including those used to control for confounding (b) Describe any methods used to examine subgroups and interactions (c) Explain how missing data were addressed (d) Cohort study—if applicable, explain how loss to follow-up was addressed Case-control study—if applicable, explain how matching of cases and controls was addressed Cross-sectional study—if applicable, describe analytical methods taking account of sampling strategy (e) Describe any sensitivity analyses	12(d) p. N.A. 12(e) p. 10, 14
Results		
Participants	13* (a) Report the numbers of individuals at each stage of the study—eg, numbers potentially eligible, examined for eligibility, confirmed eligible, included in the study, completing follow-up, and analysed (b) Give reasons for non-participation at each stage (c) Consider use of a flow diagram	13(a) p. 7 supplemental material 13(b) p. 7 13(c) supplemental material
Descriptive data	14* (a) Give characteristics of study participants (eg, demographic, clinical, social) and information on exposures and potential confounders (b) Indicate the number of participants with missing data for each variable of interest (c) Cohort study—summarise follow-up time (eg, average and total amount)	14(a) p. 11, 23 14(b) p. 7 14(c) p. 11
Outcome data	15* Cohort study—report numbers of outcome events or summary measures over time Case-control study—report numbers in each exposure category, or summary measures of exposure Cross-sectional study—report numbers of outcome events or summary measures	15 p. 11 16(a) p. 11-13 + p. 24, 25 16(c) N.A.
Main results	16 (a) Give unadjusted estimates and, if applicable, confounder-adjusted estimates and their precision (eg, 95% confidence interval). Make clear which confounders were adjusted for and why they were included (b) Report category boundaries when continuous variables were categorised (c) If relevant, consider translating estimates of relative risk into absolute risk for a meaningful time period	
Other analyses	17 Report other analyses done—eg, analyses of subgroups and interactions, and sensitivity analyses	17 p. 13
Discussion		
Key results	18 Summarise key results with reference to study objectives	18 p. 14, 17 19 p. 17
Limitations	19 Discuss limitations of the study, taking into account sources of potential bias or imprecision. Discuss both direction and magnitude of any potential bias	
Interpretation	20 Give a cautious overall interpretation of results considering objectives, limitations, multiplicity of analyses, results from similar studies, and other relevant evidence	20 p. 14-17
Generalisability	21 Discuss the generalisability (external validity) of the study results	21 p. 17
Other information		
Funding	22 Give the source of funding and the role of the funders for the present study and, if applicable, for the original study on which the present article is based	22 p. 18

* Give such information separately for cases and controls in case-control studies, and, if applicable, for exposed and unexposed groups in cohort and cross-sectional studies. An explanation and elaboration article discusses each checklist item and gives methodological background and published examples of transparent reporting. The STROBE checklist is best used in conjunction with this article (freely available on the websites of PLoS Medicine, Annals of Internal Medicine, and Epidemiology). Separate versions of the checklist for cohort, case-control, and cross-sectional studies are available on the STROBE website.

Table: The STROBE statement—checklist of items that should be addressed in reports of observational studies

Supplemental table S4. Characteristics of kidney transplant recipients who develop post-transplantation diabetes mellitus and non-developers

	PTDM	No PTDM	P-value
Men, (n)	28	215	
Dihydrotestosterone, nmol/L	0.8 (0.5 – 0.9)	1.0 (0.74 – 1.3)	<0.001
Testosterone, nmol/L	10.2 (8.6 – 12.7)	12.4 (9.6 – 16.0)	0.002
Age, years	52.0 ± 11.8	50.6 ± 13.8	0.60
Weight, kg	87.8 ± 10.7	82.5 ± 14.4	0.06
BMI, kg/m ²	26.8 ± 2.5	25.6 ± 3.8	0.03
Cardiovascular history, n (%)	4 (14.3)	18 (8.4)	0.30
SBP, mmHg	139.4 ± 14.3	135.8 ± 15.9	0.25
eGFR, ml/min per 1.73 m ²	49.2 ± 16.8	53.2 ± 20.0	0.32
Glucose, mmol/L	5.5 ± 0.7	5.2 ± 0.6	0.05
HbA _{1C} , %	6.0 ± 0.3	5.6 ± 0.3	<0.001
HbA _{1C} , mmol/mol	42.5 ± 3.2	38.2 ± 3.7	<0.001
hsCRP, mg/L	1.6 (1.0 – 3.2)	1.1 (0.5 – 3.3)	0.19
Transplantation vintage, years	3.7 (1.3 – 13.8)	5.1 (2.0 – 12.1)	0.40
Steroid treated acute rejection, n (%)	7 (25.0)	50 (23.3)	0.82
Calcineurin inhibitor, n (%)	22 (78.6)	121 (56.3)	0.03
Tacrolimus	7 (25.0)	39 (18.1)	0.44
Proliferation inhibitor, n (%)	20 (71.4)	180 (83.7)	0.12
Cumulative prednisolone dose, g	15.5 (4.7 – 43.0)	18.5 (7.5 – 40.1)	0.41

Data are represented as mean ± SD, median (interquartile range) or n (%). Differences between kidney transplant recipients who developed post-transplantation diabetes mellitus and those who did not were tested with independent sample t-test when variables were normally distributed, Mann-Whitney U test for skewed variables, and with Fishers exact test for categorical variables. SBP, systolic blood pressure; eGFR, estimated glomerular filtration rate; hsCRP, high-sensitivity C-reactive Protein; PTDM, post-transplantation diabetes mellitus; Cardiovascular history was defined as a history of cerebrovascular accident, myocardial infarction, and/or peripheral arterial disease; Transplantation vintage was defined as the time between transplantation and baseline

Supplemental table S5. Association of log2 dihydrotestosterone with post-transplantation diabetes mellitus

	Dihydrotestosterone – no prediabetes		Dihydrotestosterone - prediabetes	
	HR (95% CI)	P-value	HR (95% CI)	P-value
Events, no.	5		23	
Model 1	0.03 (0.003 – 0.34)	0.005	0.43 (0.22 – 0.83)	0.01

Model 1: crude analysis

Supplemental table S6. Association of log2 total testosterone with post-transplantation diabetes mellitus

	Dihydrotestosterone – no prediabetes		Dihydrotestosterone - prediabetes	
	HR (95% CI)	P-value	HR (95% CI)	P-value
Events, no.	5		23	
Model 1	0.02 (0.002 – 0.19)	0.001	0.56 (0.24 – 1.29)	0.17

Model 1: crude analysis