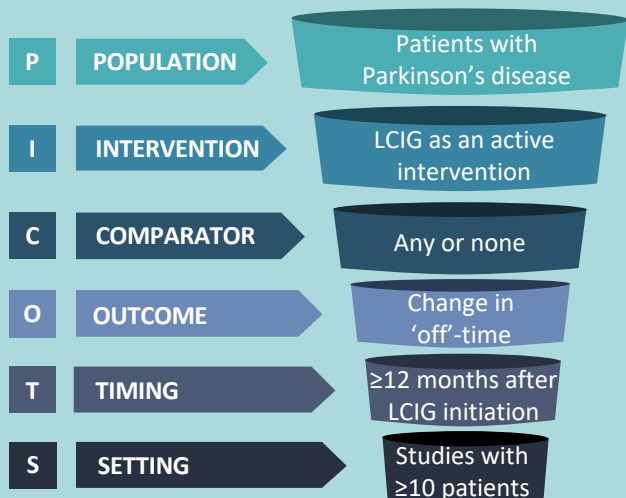


# The long-term impact of levodopa/carbidopa intestinal gel on 'off'-time in patients with advanced Parkinson's disease: a systematic review

Angelo Antonini, Per Odin, Rajesh Pahwa, Jason Aldred, Ali Alobaidi, Yash J Jalundhwala, Pavnit Kukreja, Lars Bergmann, Sushmitha Inguva, Yanjun Bao, K Ray Chaudhuri

## STUDY SELECTION



## A LARGE POPULATION



**27**

studies included in the review

**1875**

patients with advanced Parkinson's disease



Duration of LCIG treatment

**12-120 m**

## 'OFF'-TIME REDUCTIONS MAINTAINED UP TO 5 YEARS

At 3-6 months

**47-82%**  
reduction in 'off'-time

At 1 year

**33-84%**  
reduction in 'off'-time

At 2 years

**37-82%**  
reduction in 'off'-time

At 3-5 years

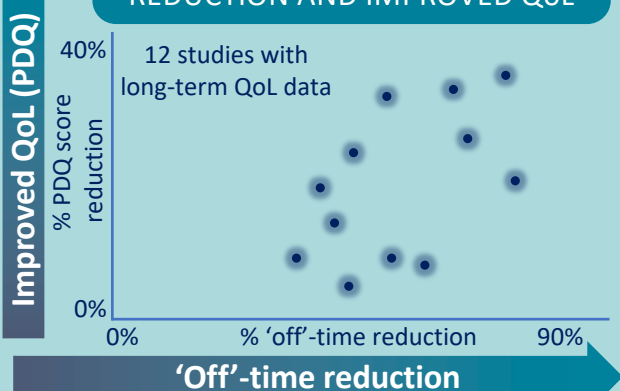
**68-83%**  
reduction in 'off'-time

## 'OFF'-TIME SIGNIFICANTLY REDUCED WITH LONG-TERM LCIG

**61%**  
weighted average reduction in 'off'-time

**38-84%**  
reduction in 'off'-time at end of follow-up

## A CORRELATION TREND BETWEEN LONG-TERM 'OFF'-TIME REDUCTION AND IMPROVED QoL



LEVODOPA/CARBIDOPA INTESTINAL GEL (LCIG) SIGNIFICANTLY REDUCES 'OFF'-TIME



REDUCTIONS IN 'OFF'-TIME EVIDENT WITHIN 3 MONTHS OF STARTING LCIG



REDUCTIONS IN 'OFF'-TIME MAINTAINED IN THE LONG-TERM UP TO 5 YEARS



'OFF'-TIME REDUCTIONS CORRELATED WITH IMPROVED QUALITY OF LIFE