

Figure 1 X-13 ARIMA seasonal adjustment process

Source: Findley, D.F., Brian C. Monsell, William R. Bell, Mark C. Otto and Bor-Chung Chen (1998), Yueh-Ying Huang (2013).

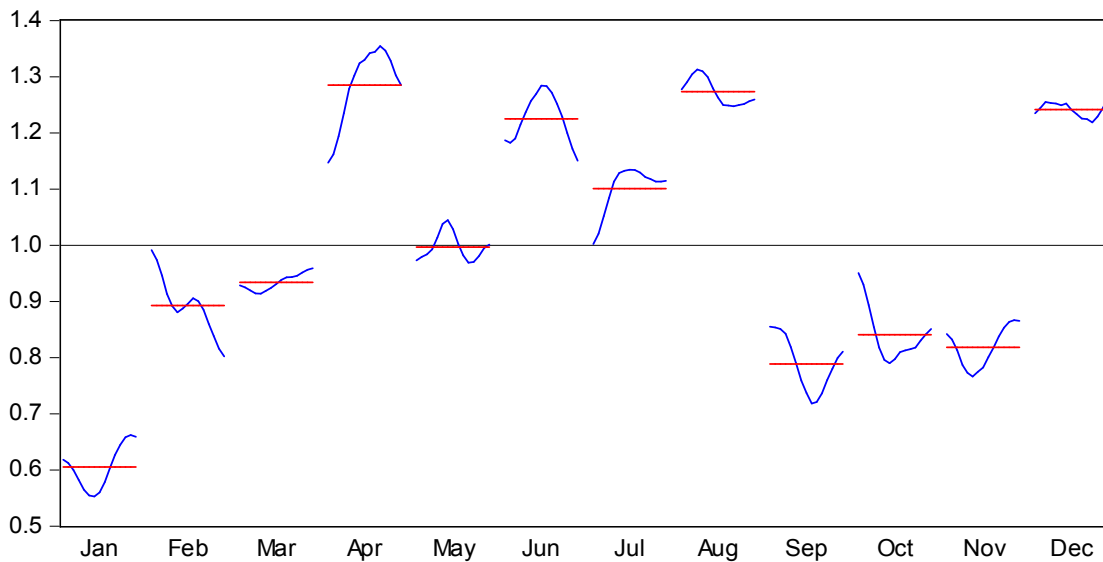


Figure 2 Seasonal Variations of Tourist Arrivals from Hong Kong during the Period from 2002 to 2016 - by month

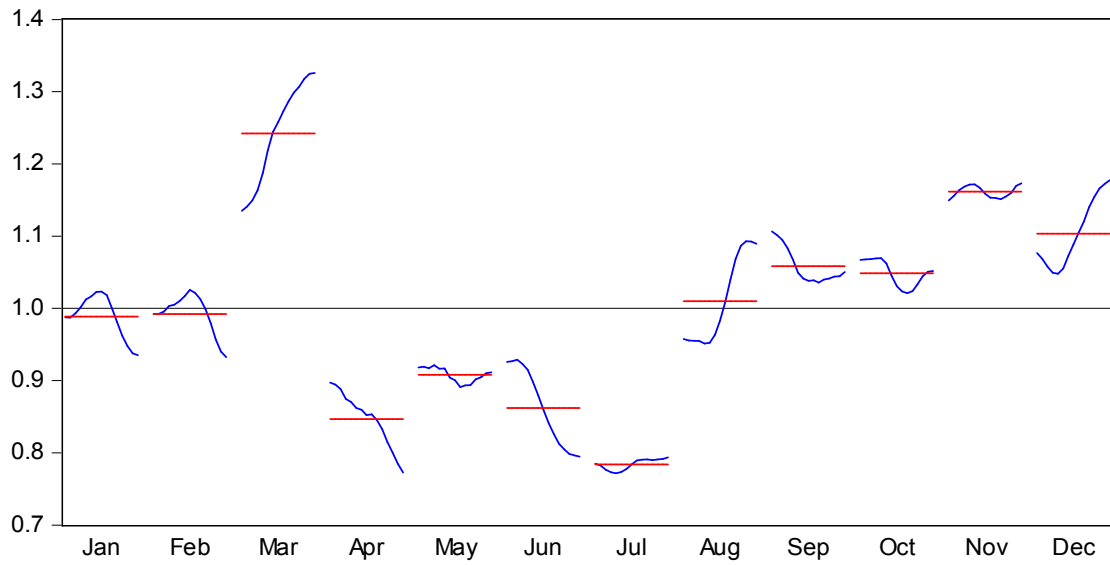


Figure 3 Seasonal Variations of Tourist Arrivals from Japan during the Period from 2002 to 2016

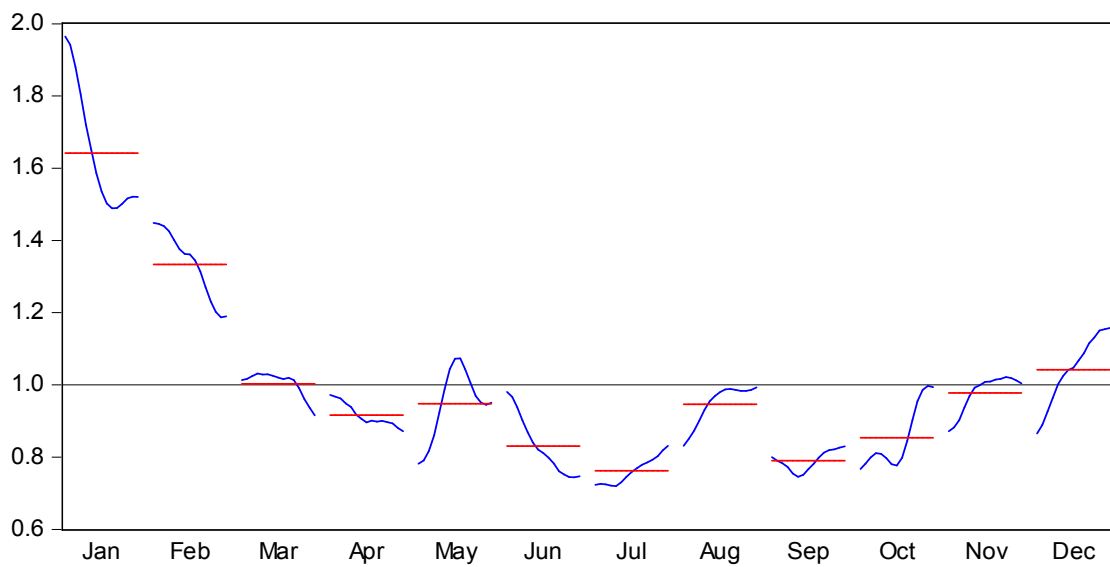


Figure 4 Seasonal Variations of Tourist Arrivals from Korea during the Period from 2002 to 2016

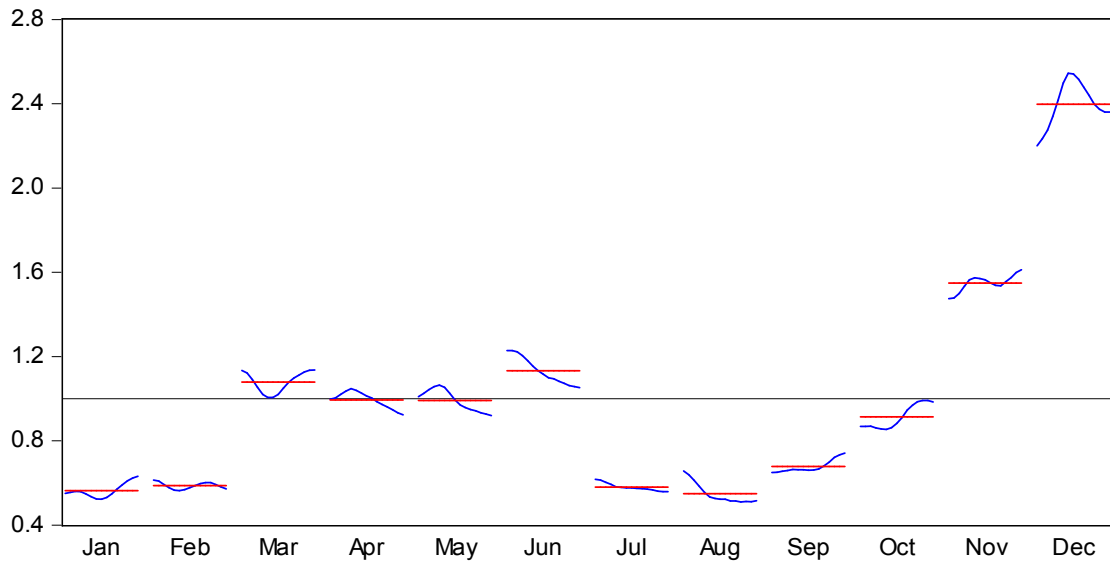


Figure 5 Seasonal Variations of Tourist Arrivals from Singapore during the Period from 2002 to 2016

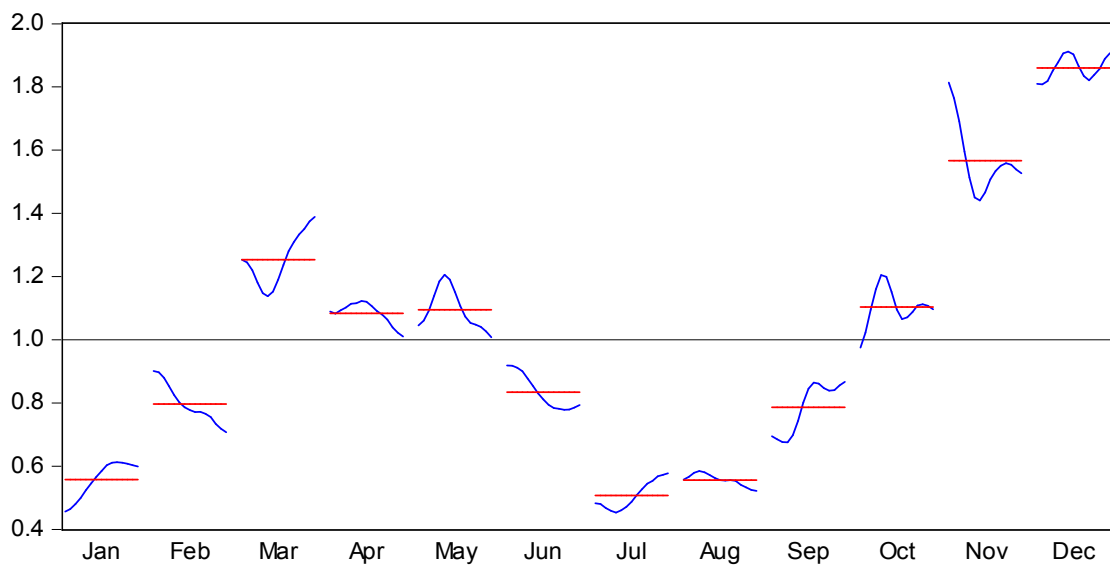


Figure 6 Seasonal Variations of Tourist Arrivals from Malaysia during the Period from 2002 to 2016

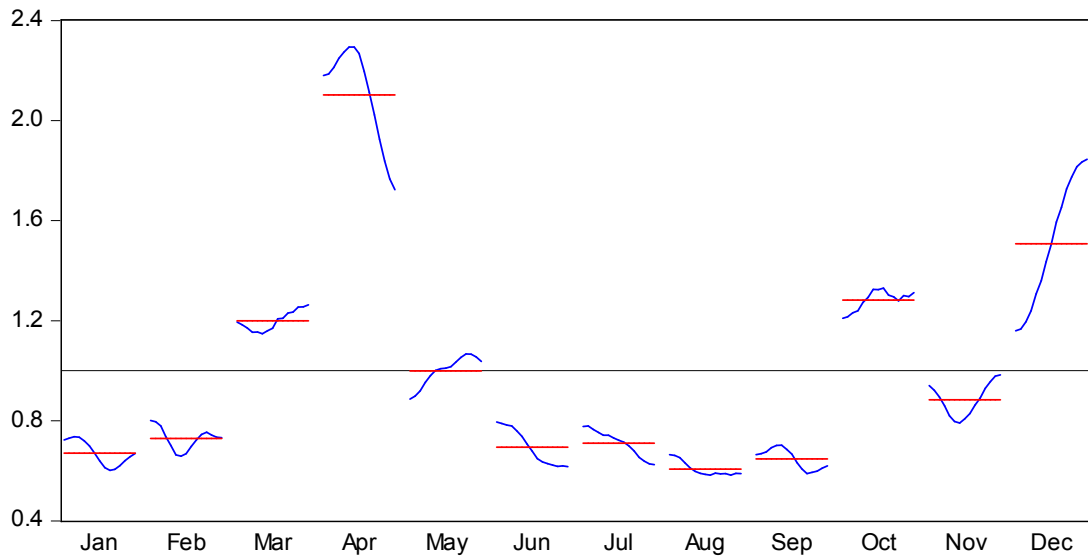


Figure 7 Seasonal Variations of Tourist Arrivals from Thailand during the Period from 2002 to 2016

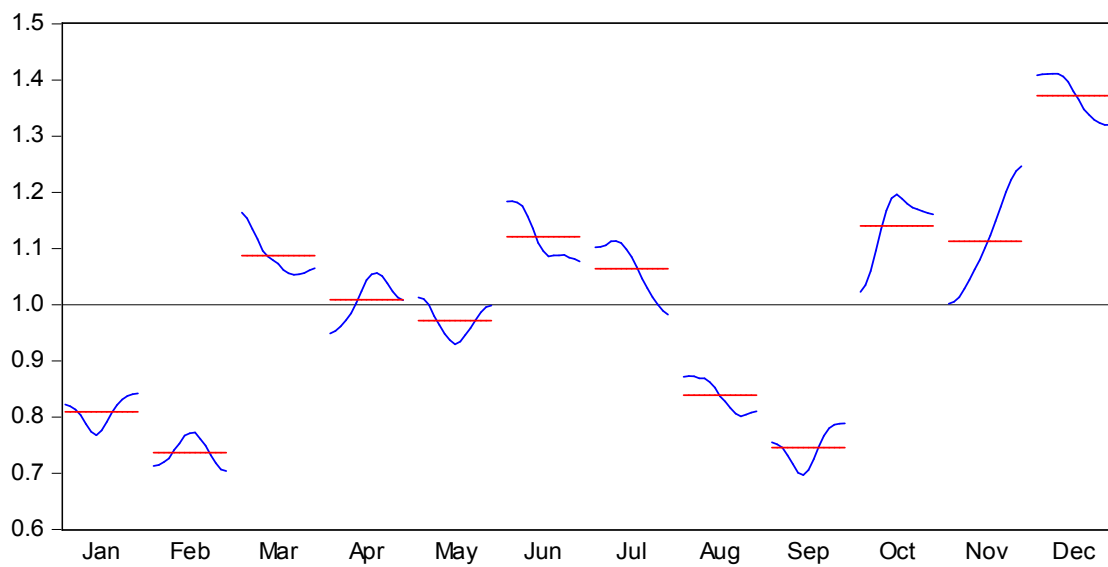


Figure 8 Seasonal Variations of Tourist Arrivals from America during the Period from 2002 to 2016

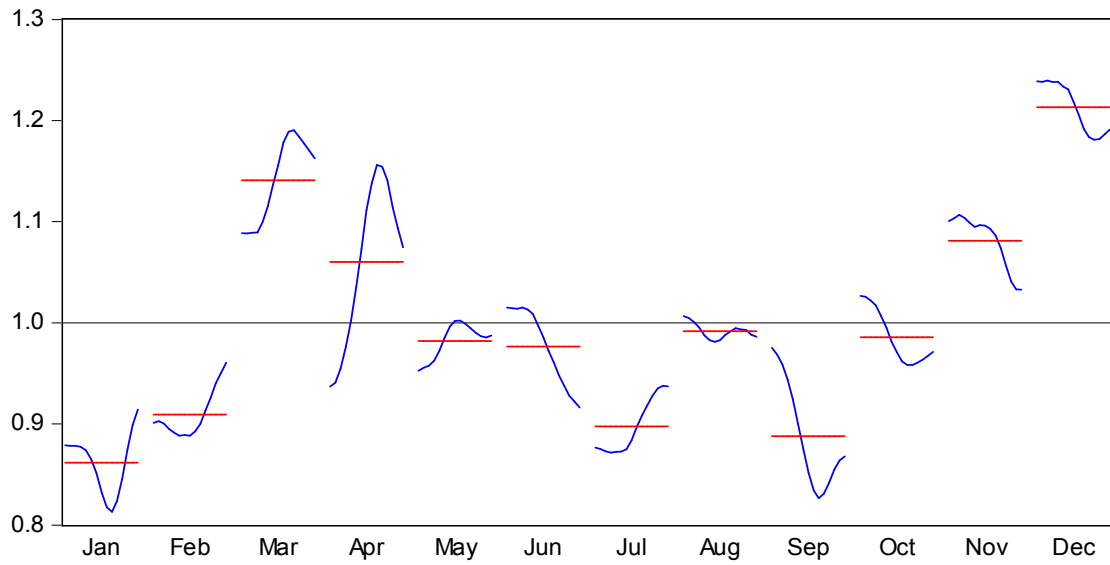


Figure 9 Seasonal Variations of Tourist Arrivals to Taiwan during the Period from 2002 to 2016

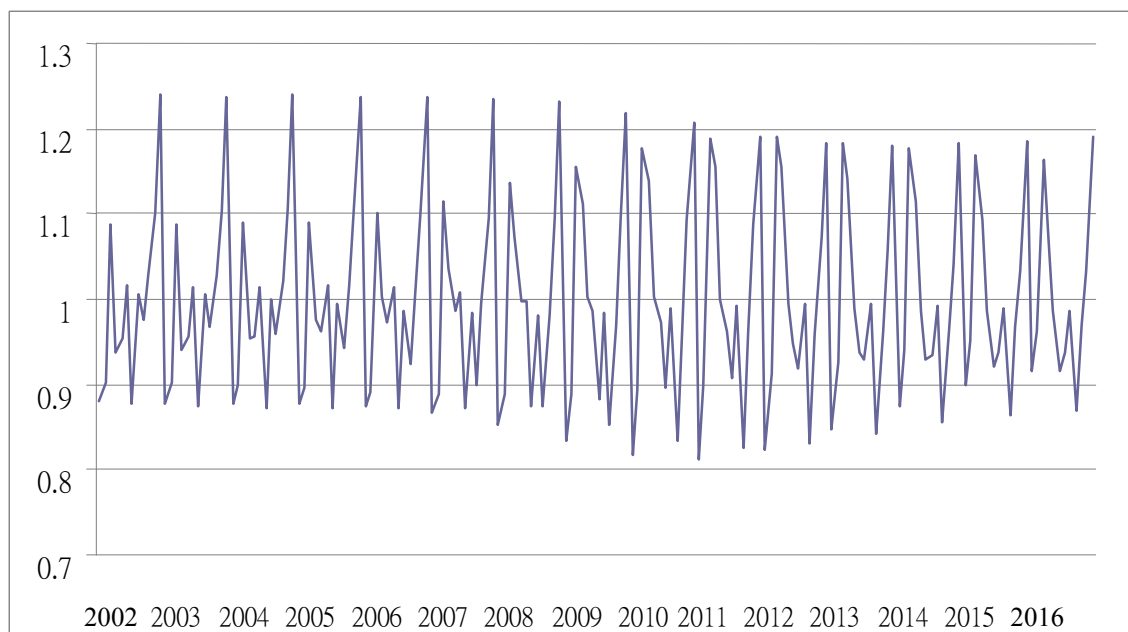


Figure 10 Seasonal Variations of Tourist Arrivals to Taiwan during the Period from 2002 to 2016