

How to ensure online attention is tracked by Altmetric: A donut's journey



How do I make sure Altmetric tracks mentions of my work online?



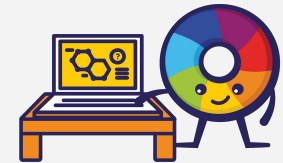
Altmetric relies on identifiers, like DOIs, to match up mentions with publications. Identifiers are usually located on journal websites or repositories.



When sharing research online, e.g. Twitter, always include a link to the journal or other page where the publication was originally posted so Altmetric can track the identifier.



Encourage journalists, bloggers, and other science communicators to do the same and watch attention to your research grow!



Learn more by watching this short [video](#) or view this [blog post](#).