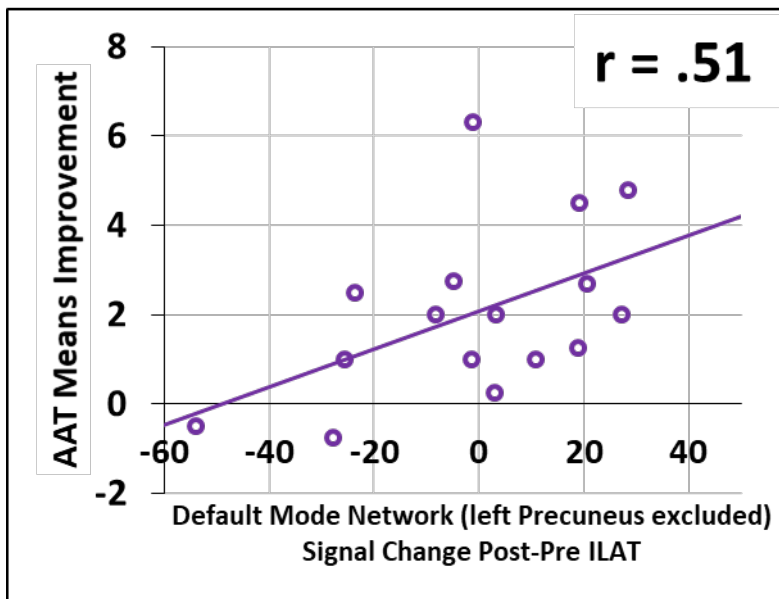
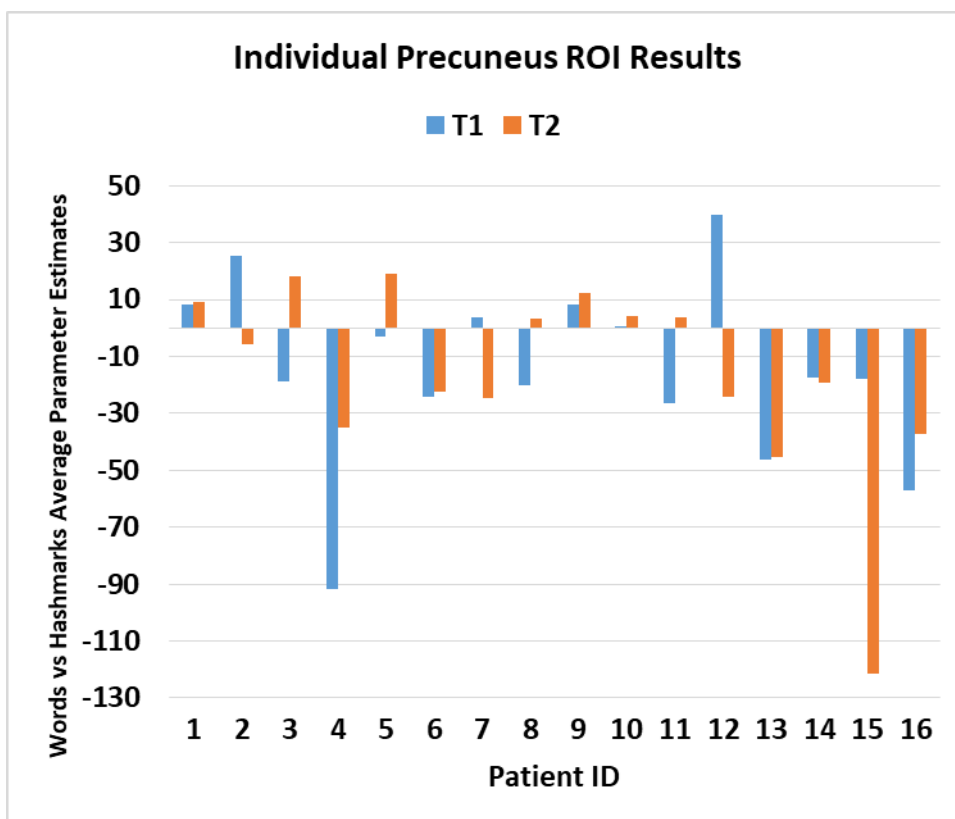


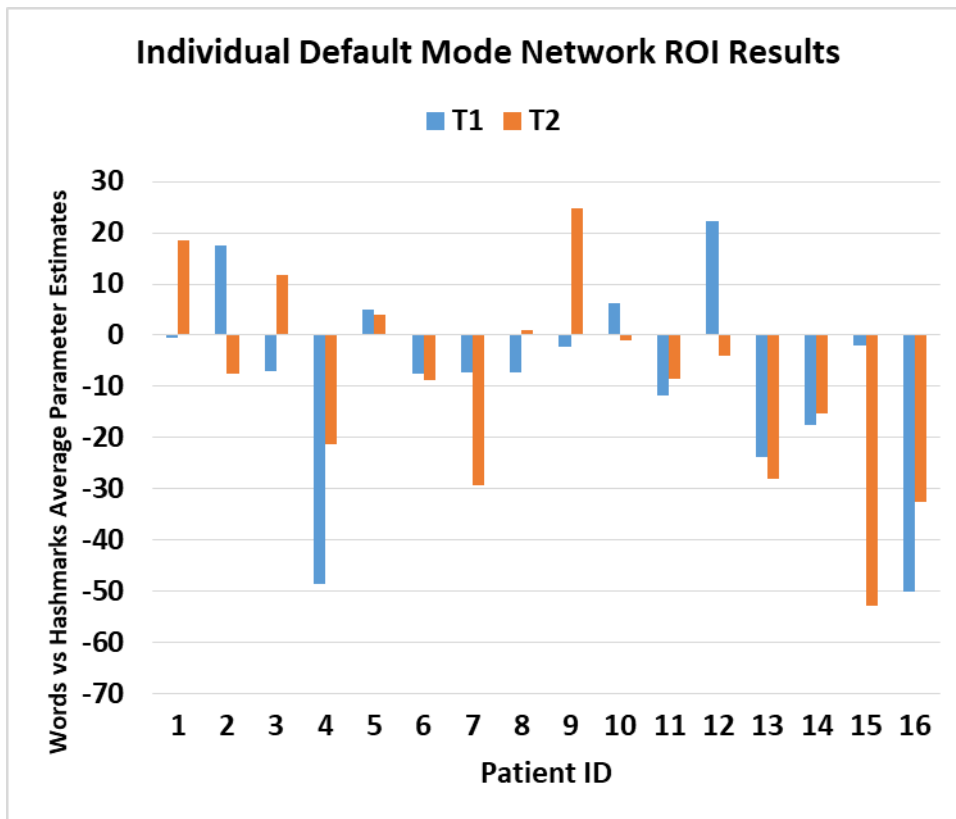
Supplemental Material S1. Supplemental figures and tables.



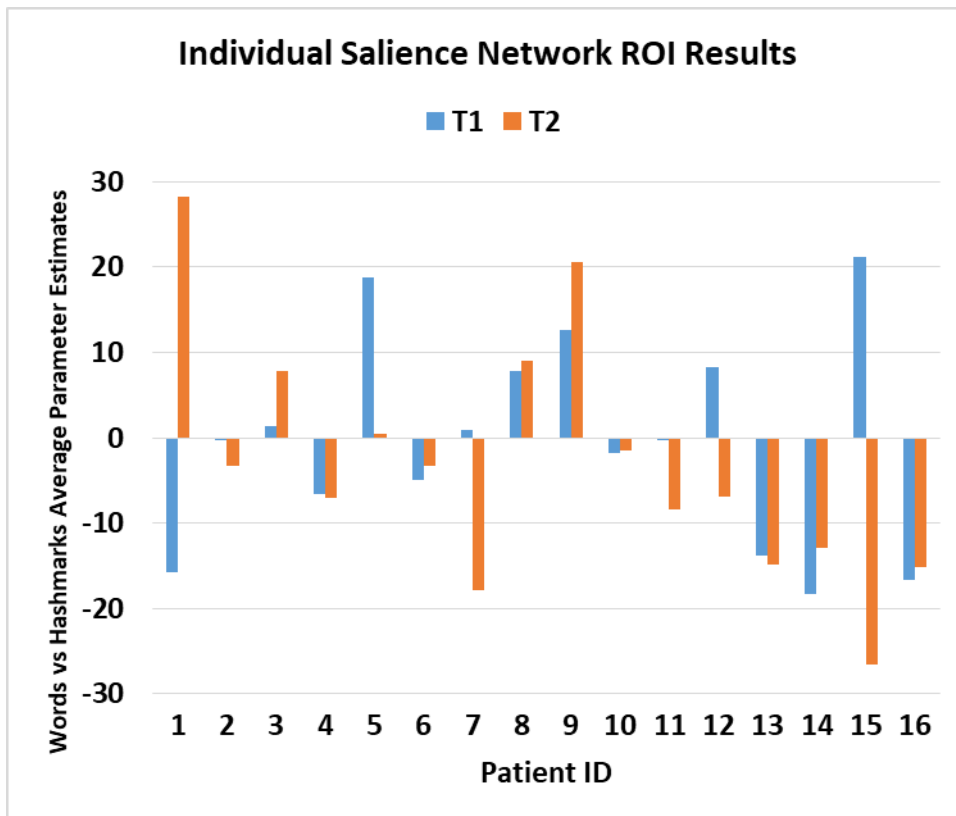
Supplemental Figure S1: Scatter plot of Words-vs-Hashmarks T2–T1 BOLD signal change and AAT results T2–T1 in the default mode network when the significant cluster in the left precuneus (see Figure 3) is excluded from ROI definition. Circles depict data from individual patients and the linear trendline is represented via the solid line.



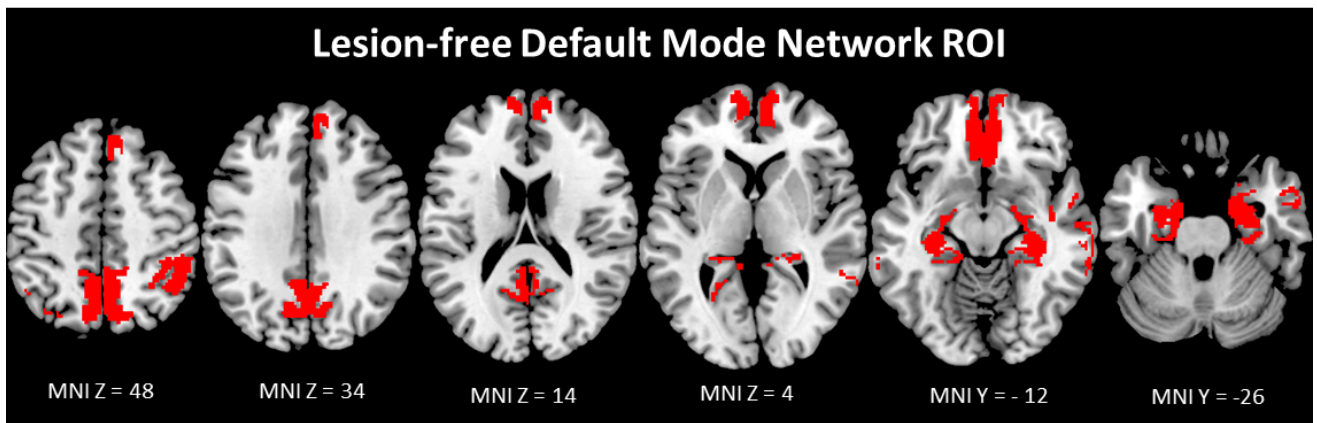
Supplemental Figure S2: Individual average parameter estimates for the contrast words vs. Hashmarks (visual baseline) in the precuneus ROI.



Supplemental Figure S3: Individual average parameter estimates for the contrast words vs. hashmarks (visual baseline) in the default mode network ROI.



Supplemental Figure S4: Individual average parameter estimates for the contrast words vs. hashmarks (visual baseline) in the salience network ROI.



Supplemental Figure S5: Overview of the lesion-free default mode network ROI. Each horizontal slice is presented with the respective Z coordinate in MNI space.

Supplemental Table S1: Significant clusters for each time point for the words vs. hashmark (visual baseline) contrast, at a voxel-wise $p < .005$ and a minimum cluster size of $k = 100$.

Contrast	Cluster location	Cluster Size	Peak MNI Coordinates			t	p
			x	y	z		
T1 Words > Hashes	Right Supplementary Motor Area	109	6	10	64	5.06	< .001
T2 Words > Hashes	Right Inferior Frontal Cortex	120	42	26	-14	5.35	< .001
	Pars Orbitalis		28	22	-6	3.02	< .001
	Right Inferior Frontal Cortex,	140	48	20	20	5.19	< .001
	Pars Triangularis		44	28	26	4.27	< .001
	Left Thalamus	113	-4	-14	10	4.78	< .001
Right Cerebellum	210	10	-80	-24	3.3	< .001	
		16	-74	-22	3.09	.001	
			30	-72	-20	2.87	.002

Supplemental Table S2: Significant clusters for the differences between time point on the words vs. hashmark (visual baseline) contrast, at a voxel-wise $p < .005$ and a minimum cluster size of $k = 40$.

Contrast	Cluster location	Cluster Size	Peak MNI Coordinates			t	p
			x	y	z		
T1-T2 Words > Hashes		<i>no significant clusters</i>					
T2 -T1 Words > Hashes	Right Superior Occipital Cortex	83	28	-66	28	4.48	< .001
	Left Thalamus	73	-4	-12	12	4.08	< .001

Supplemental Table S3: Significant clusters for the effect of AAT T2–T1 differences on T2–T1 signal change for the words vs. visual baseline contrast using intensity or duration as additional covariates, at a voxel-wise $p < .005$ and a minimum cluster size of $k = 40$.

Covariates	Cluster location	Cluster Size	Peak MNI Coordinates			t	p
			x	y	z		
ILAT Intensity	Left Precuneus	49	-10	-48	40	3.46	.002
ILAT Duration	Left Precuneus	46	-6	-52	38	3.43	.002

Please note that the cluster size threshold in Supplemental Tables S2 and S3 was considerably more liberal than in the remaining analyses for explorative purposes. As a cluster size of $k = 100$ was not reached in either analysis it was decreased to $k = 40$, following a stepwise lowering of the cluster size threshold by 10 voxels per step and then selecting a threshold 10 voxels lower than required for the emergence of first clusters in both analyses.