



After life, (detail) 2016

PRESS RELEASE

Mariele Neudecker, *Sediment*: 6 September – 17 November 2019

For *Sediment*, Neudecker will present some key pieces taking the visitors through various strands of her practice. This ranges from early map works, the *Plastic Vanitas* still life series, Deep-Sea and Arctic projects including new two-dimensional works and a new tank work specially commissioned for the exhibition. In promoting her enquiry in the relationship between the actual and mediated, she keeps returning to looking at landscape tradition in art, dealing simultaneously with questions around technology, science, changes to our environment, collective experience and time.

Úna McCarthy, Director/Curator of the exhibition remarked “this is a First for Limerick City Gallery of Art as it is Mariele’s first major solo exhibition in a cultural institution in Ireland and we have commissioned one of her signature tank pieces for this exhibition along with a series of two dimensional works. The exhibition will travel to the UK in 2020 and LCGA is working with Bath Spa University to publish a book of the work”.

Carnegie Building, Pery Square, Limerick, Ireland.

FREE ADMISSION

Tel: +353(0)61 310633; F:+353(0)61 310228; Email: artgallery@limerick.ie; Web www.gallery.limerick.ie

Opening Hours: Monday/Tuesday/Wednesday/Friday & Saturday 10-5.30pm; Thursday 10-8pm; Sunday 12-5.30.

LAST ENTRY 5 & 7.30pm **Closed on Public & Bank Holidays.**



Mariele Neudecker was born in Dusseldorf and studied art in Germany, Ireland and the UK. She now lives in Bristol. This is her first major solo exhibition in an Irish cultural institution and includes works from the 90s up to the recent past as well as new commissions, made especially for LCGA.

Solo exhibitions include the Ikon Gallery, Birmingham; Tate Britain and St Ives; the Kunstmuseum, Trondheim, Norway. Neudecker has also shown widely in international group exhibitions.

Neudecker is Professor and Research Fellow at Bath Spa University, Fellow for CERN's Visiting Arts Programme and works on the European Commission's JRC Science and Arts advisory panel.

Neudecker is represented by Galerie Barbara Thumm, Berlin, Thomas Rehbein Galerie, Cologne, Galerie in Camera, Paris and Galeria Pedro Cera, Lisbon. Courtesy for the works is between the galleries listed.

Further information contact: Siobhan O' Reilly Siobhan.oreilly@limerick.ie

www.marieleneudecker.co.uk

Ariane Koek, founder of Arts at CERN, in conversation with Mariele Neudecker, 5.30pm Thursday 7 November 2019

Free Event. All welcome

Carnegie Building, Pery Square, Limerick, Ireland.

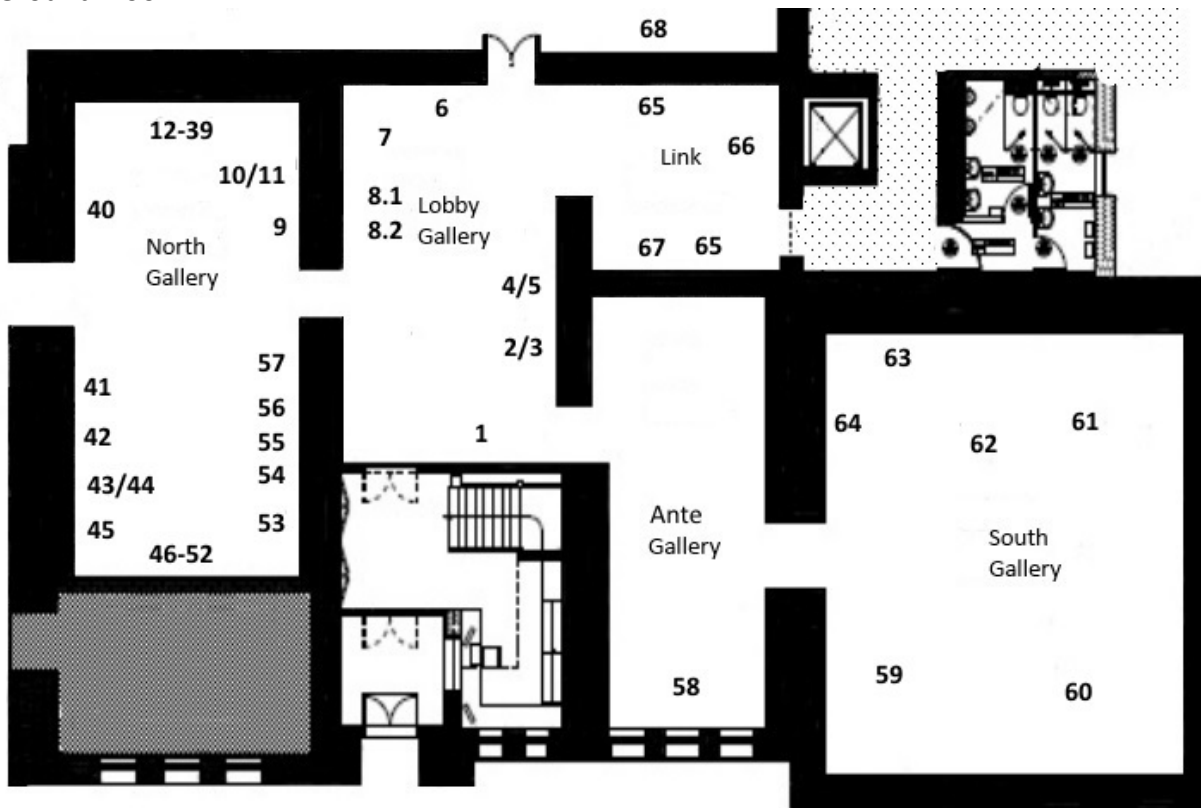
FREE ADMISSION

Tel: +353(0)61 310633; F:+353(0)61 310228; Email: artgallery@limerick.ie; Web www.gallery.limerick.ie

Opening Hours: Monday/Tuesday/Wednesday/Friday & Saturday 10-5.30pm; Thursday 10-8pm; Sunday 12-5.30.

LAST ENTRY 5 & 7.30pm *Closed on Public & Bank Holidays.*

Ground Floor



LOBBY GALLERY

1	Everything and Nothing	2007	MDF, paper, wood, plastocene, jesmonite, acrylic paint	29 x 35 x 152 cm
2	Never Eat Shredded Wheat (German, Male 37) [Memory Maps #14]	1997	acrylic and felt pen on paper, encapsulated in plastic	122 x 221 cm
3	Never Eat Shredded Wheat (English, Male, 33) [Memory Maps #15]	1997	acrylic and felt pen on paper, encapsulated in plastic	122 x 206 cm
4	Never Eat Shredded Wheat (Argentinian, Male, 32) [Memory Maps #18]	1997	acrylic and felt pen on paper, encapsulated in plastic	122 x 208 cm
5	Never Eat Shredded Wheat (Swiss, Female, 36) [Memory Maps #17]	1997	acrylic and felt pen on paper, encapsulated in plastic	122 x 207 cm
6	Another Day (Simultaneous Record Of The Sun Rising And Setting In Two Opposite Locations On The Globe - South East Australia And West Azores)	2000	Two 19min DVD loops	size variable
7	The World's Prime Meridian (0100H – 2400H)	1997	plaster-cast plus certificate	24.5 x 15 x 31 cm
8.1	Never Eat Shredded Wheat (Georgian, Male 45) [Memory Maps Globe #1]	1998	Acrylic and felt pen on fibreglass sphere, varnished with gloss	25 cm ø
8.2	Never Eat Shredded Wheat (English, Female, 45) [Memory Maps Globe #2]	1998	acrylic and felt pen on fibreglass sphere, varnished with gloss	25 cm ø

Carnegie Building, Pery Square, Limerick, Ireland.

FREE ADMISSION

Tel: +353(0)61 310633; F:+353(0)61 310228; Email: artgallery@limerick.ie; Web www.gallery.limerick.ie

Opening Hours: Monday/Tuesday/Wednesday/Friday & Saturday 10-5.30pm; Thursday 10-8pm; Sunday 12-5.30.

LAST ENTRY 5 & 7.30pm Closed on Public & Bank Holidays.



LINK GALLERY				
65	The Improbable Always Happens Sometimes (Decent)	2017	stills printed on archive paper, framed	53 x 56 x 5 cm (each)
66	The Improbable Always Happens Sometimes, (Sediment) 1	2017	mixed media incl video, glass, ink on paper and archive prints	72 x 129 x 85 cm
67	The Improbable Always Happens Sometimes, (Sediment) 2	2017	mixed media incl video, glass, ink on paper and archive prints	72 x 129 x 85 cm
EAST GALLERY				
68	Animation Plastic Vanitas	2015	Video	5'33"
ANTI GALLERY				
58	Dark Years Away	2013	6 minutes video projection plus 1 monitor	variable dimensions
SOUTH GALLERY				
59	Shipwreck	1997	mixed media, wood, fibre-glass, water, salt GAC100	32.5 x 28 x 36 cm
60	And Then the World Changed Colour: Breathing Yellow	2019	mixed media, wood, fibre-glass, water, salt GAC100	63.6 x 56.4 x 45 cm
61	Another Million Days and Nights Go By	2002	mixed media, wood, fibre-glass, water, salt GAC100	63 x 42 x 43.5cm
62	Nothing Will Stay The Same	2019	mixed media, wood, fibre-glass, water, salt GAC100	48 x 54 x 48 cm
63	Much Was Decided Before You Were Born	2003	photo on Alu-Dibond	150 x 122 cm
64	None of Us Believe in Different Things	2003	photo on Alu-Dibond	81,5 x 205 cm. Edition of 3 + 2AP

Carnegie Building, Pery Square, Limerick, Ireland.

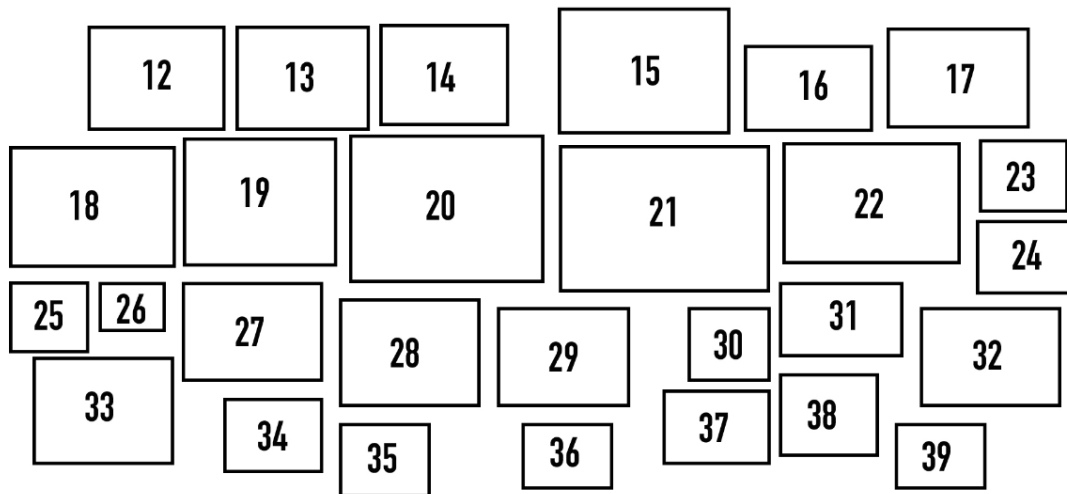
FREE ADMISSION

Tel: +353(0)61 310633; F:+353(0)61 310228; Email: artgallery@limerick.ie; Web www.gallery.limerick.ie

Opening Hours: Monday/Tuesday/Wednesday/Friday & Saturday 10-5.30pm; Thursday 10-8pm; Sunday 12-5.30.

LAST ENTRY 5 & 7.30pm Closed on Public & Bank Holidays.

North Gallery, Plastic Vanitas



NORTH GALLERY (anti-clockwise from entrance)

9	Still Life with Face Shield [Single Object, AIBDC 007106, CR, 273, shelf 3 of 8, 0.4 kg]	2015	giclée print on archive paper	49 x 73 x 4 cm
10	Still Life with Hockey Kit [AIBDC, 642, CR, 136, Shelf 8 of 8, 1.1kg]	2015	giclée print on archive paper	86 x 62 x 5 cm
11	Still Life with Hockey Helmet [Single Object, 006419, CR, 223, 8 of 8, 1.2kg]	2015	giclée print on archive paper	66 x 49.5 x 2 cm
12	Still Life with Shoe Horn and Flute [PHSL,14, MS, 7, Shelf 2 of 5, 2.1kg]	2015	giclée print on archive paper	66 x 47.5 x 2 cm
13	Still Life with Thermo Jug and Door Handle [AIBDC, 316, CR, 192, Shelf 7 of 7, 4.4kg]	2015	giclée print on archive paper	34.5 x 47.5 x 2 cm
14	Still Life with Measuring Spoons and Two Snowmen [AIBDC, 311, CR, 127, Shelf 7 of 8, 1.4kg]	2015	giclée print on archive paper	64 x 47.5 x 4 cm
15	Still Life with Bourgie Lamp [Single Object, 006874, CR, 165, Shelf 2 of 4, 3.4kg]	2015	giclée print on archive paper	85 x 59 x 4.5 cm
16	Still Life with Chopping Board and Cup [AIBDC 535, CR, 134, Shelf 6 of 8, 1.8kg]	2015	giclée print on archive paper	60.5 x 41.5 x 3 cm
17	Still Life with Flower and Poodle [AIBDC, 237, CR, 90, Shelf 2 of 8, 3.8kg]	2015	giclée print on archive paper	65.5 x 46.5 x 2 cm
18	Still Life with Candle Stick and Duck [AIBDC, 66, CR, 28, Shelf 4 of 8, 2.7kg]	2015	giclée print on archive paper	80 x 58.5 x 4 cm

Carnegie Building, Pery Square, Limerick, Ireland.

FREE ADMISSION

Tel: +353(0)61 310633; F:+353(0)61 310228; Email: artgallery@limerick.ie; Web www.gallery.limerick.ie

Opening Hours: Monday/Tuesday/Wednesday/Friday & Saturday 10-5.30pm; Thursday 10-8pm; Sunday 12-5.30.

LAST ENTRY 5 & 7.30pm Closed on Public & Bank Holidays.



19	Still Life with Lola Lampshade [AIBDC, 483, C, R 181, Shelf 4 of 7, 0.6kg]	2015	giclée print on archive paper	74 x 63.5 x 5 cm
20	Still Life with Hair Comb and Cup Set [WCHL, 18, MS, 27, Shelf 2 of 6, 2.7kg]	2015	giclée print on archive paper	97.5 x 72 x 5 cm
21	Still Life with Desert Bowl Set and Hoof Protector [PHSL, 7, MS, 3, Shelf 3 of 6, 3.9kg]	2015	giclée print on archive paper	101 x 73 x 4 cm
22	Still Life with Lemon and Apples [AIBDC 653, CR, 159, Shelf 6 of 7 1.5kg]	2015	giclée print on archive paper	85 x 59 x 4 cm
23	Still Life with Three Thermos [AIBDC, 13, CR, 5, Shelf 5 of 8, 2.5kg]	2015	giclée print on archive paper	34.5 x 33.5 x 3 cm
24	Still Life with Clocks [AIBDC, 554, CR, 143, Shelf 7 of 8, 3.7kg]	2015	giclée print on archive paper	45 x 33.5 x 3 cm
25	Still Life with Camera and Inkwell [AIBDC, 171, CR, 65, Shelf 1 of 8, 4.1kg]	2015	giclée print on archive paper	40.5 x 33.6 x 3 cm
26	Still Life with Shovel and Scales [AIBDC, 222, CR, 84, Shelf 4 of 8, 1.4kg]	2015	giclée print on archive paper	36.5 x 29.5 x 2 cm
27	Still Life with Bottle Warmer and Yellow Duck [AIBDC, 77, CR, Shelf 5 7 of 8, 0.8kg]	2015	giclée print on archive paper	69 x 50.5 x 4 cm
28	Still Life with Parkesine Nitrocellulose and Light Blue [PHSL, 28, MS, 10, Shelf 5 of 5, 0.9kg]	2015	giclée print on archive paper	72.5 x 58.5 x 4 cm
29	Still Life with Copper Shade and Cloths [Single Object, 005554, CR, 102, Shelf 5 of 7, 1.3kg]	2015	giclée print on archive paper	66.5 x 48 x 3 cm
30	Still Life with Salt and Pepper Mill [AIBDC, 562, CR, 151, Shelf 6 of 7, 1.2kg]	2015	giclée print on archive paper	39 x 35.5 x 4 cm
31	Still Life with Sewing Kit and Butter Dish [AIBDC, 313, CR, 191, Shelf 6 of 7, 3kg]	2015	giclée print on archive paper	56.5 x 40.5 x 2 cm
32	Still Life with Lantern [Single Object, WCHL, 239, MS, MS, Shelf 0 of 6, 1.4kg]	2015	giclée print on archive paper	68 x 48.5 x 3 cm
33	Still Life with Ice Bucket and Torch [AIBDC, 13, CR, 5, Shelf 5 of 8, 2.5kg]	2015	giclée print on archive paper	66.5 x 48 x 3 cm
34	Still Life with Desk Calendar and Coathanger [AIBDC, 313, CR, 191, Shelf 6 of 7, 3kg]	2015	giclée print on archive paper	50.5 x 37.5 x 2 cm
35	Still Life with Pineapple and Blue Cloth [AIBDC, 133, CR 37, Shelf 5 of 8, 2kg]	2015	giclée print on archive paper	45 x 36.5 x 3 cm

Carnegie Building, Pery Square, Limerick, Ireland.

FREE ADMISSION

Tel: +353(0)61 310633; F:+353(0)61 310228; Email: artgallery@limerick.ie; Web www.gallery.limerick.ie

Opening Hours: Monday/Tuesday/Wednesday/Friday & Saturday 10-5.30pm; Thursday 10-8pm; Sunday 12-5.30.

LAST ENTRY 5 & 7.30pm Closed on Public & Bank Holidays.



36	Still Life with Salad Servers and Rubik's Cube [AIBDC, 147, CR, 39, Shelf 7 of 8, 2.1kg]	2015	giclée print on archive paper	45.5 x 33 x 2 cm
37	Still Life with Shanghai Vase and Flowers [Single Object, 006876, CR, 186, Shelf 1 of 7, 2.5kg]	2015	giclée print on archive paper	51 x 36 x 2 cm
38	Still Life with Tape Rack and Clocks [AIBDC, 37, CR, 17, Shelf 1 of 8, 2.7kg]	2015	giclée print on archive paper	47 x 38 x 4 cm
39	Still Life with Moon Bowl [Single Object, 006875, CR, 187, Shelf 2 of 7, 2.1kg]	2015	giclée print on archive paper	44.5 x 33 x 2 cm
40	Still Life with Carmen Curlers and Billiard Ball [PHSL, 1, MS, 1, Shelf 1 of 5, 2.6kg]	2015	giclée print on archive paper	29.5 x 24 x 2 cm
41	Still Life with Mirror Ball [Single Object, 005555, CR, 102, Shelf 5 of 7, 1.3kg]	2015	giclée print on archive paper	39.5 x 44.5 x 4 cm
42	Still Life with Horn Pitcher and Hammer [WCHL, 15, MS, 34, Shelf 3 of 6, 1.1kg]	2015	giclée print on archive paper	50 x 34 x 3 cm
43	Still Life with Map [Single Object, 006762, CR, 178, 0.1kg]	2015	giclée print on archive paper	67 x 48 x 4 cm
44	Still Life with Snuff Box and Manuscript [WCHL, 9, MS, 34, Shelf 3 of 6, 0.7kg]	2015	giclée print on archive paper	66 x 56 x 4 cm
45	Still Life with Snuff Box and Scales, [WCHL, 15, MS, 34, 3 of 6, 1.1kg]	2015	giclée print on archive paper	88.5 64 5 cm
46	Empty Still Life with Orange Cloth	2015	giclée print on archive paper	62 x 54 x 2 cm
47	Empty Still Life with Flower	2015	giclée print on archive paper	54 x 44 x 2 cm
48	Empty Still Life with Tablecloths and Fur Coat	2015	giclée print on archive paper	74 x 64 x 5 cm
49	Empty Still Life with Large White Cloth	2015	giclée print on archive paper	80.5 x 64.5 x 4.5 cm
50	Empty Still Life with Two Cloths	2015	giclée print on archive paper	44.5 x 33.5 x 3 cm
51	Empty Still Life with Lace Tablecloth	2015	giclée print on archive paper	28.5 21.5 x 3.5 cm
52	Empty Still Life with Blue Cloth	2015	giclée print on archive paper	40 x 33 x 4 cm
53	Still Life with Ming Bowl Stacks [2 Single Objects, Grey and Red, 007007 and 007036, CR, 163, Shelf 1 of 4, 3.2kg]	2015	giclée print on archive paper	39.5 x 29.5 x 3 cm

Carnegie Building, Pery Square, Limerick, Ireland.

FREE ADMISSION

Tel: +353(0)61 310633; F:+353(0)61 310228; Email: artgallery@limerick.ie; Web www.gallery.limerick.ie

Opening Hours: Monday/Tuesday/Wednesday/Friday & Saturday 10-5.30pm; Thursday 10-8pm; Sunday 12-5.30.

LAST ENTRY 5 & 7.30pm Closed on Public & Bank Holidays.



54	Still Life with Lampshade and Butterfly [AIBDC, 203, CR, 76, Shelf 4 of 8, 1.1kg]	2015	giclée print on archive paper	43.5 x 34 x 4 cm
55	Still Life with Chopping Board and Cup [AIBDC 535, CR, 134, Shelf 6 of 8, 1.8kg]	2015	giclée print on archive paper	60.5 x 41.5 x 3 cm
56	Still Life with Ketchup Bottle and Lemon [AIBDC, 92, CR, 31, Shelf 7 of 8, 0.8kg]	2015	giclée print on archive paper	65.5 x 45 x 2 cm
57	Still Life with Snuff Box (Ram's Head) [Single Object, WCHL, 252, MS, MS, Shelf 0 of 6, 3.4kg]	2015	giclée print on archive paper	73.5 x 55 x 3 cm

Carnegie Building, Pery Square, Limerick, Ireland.

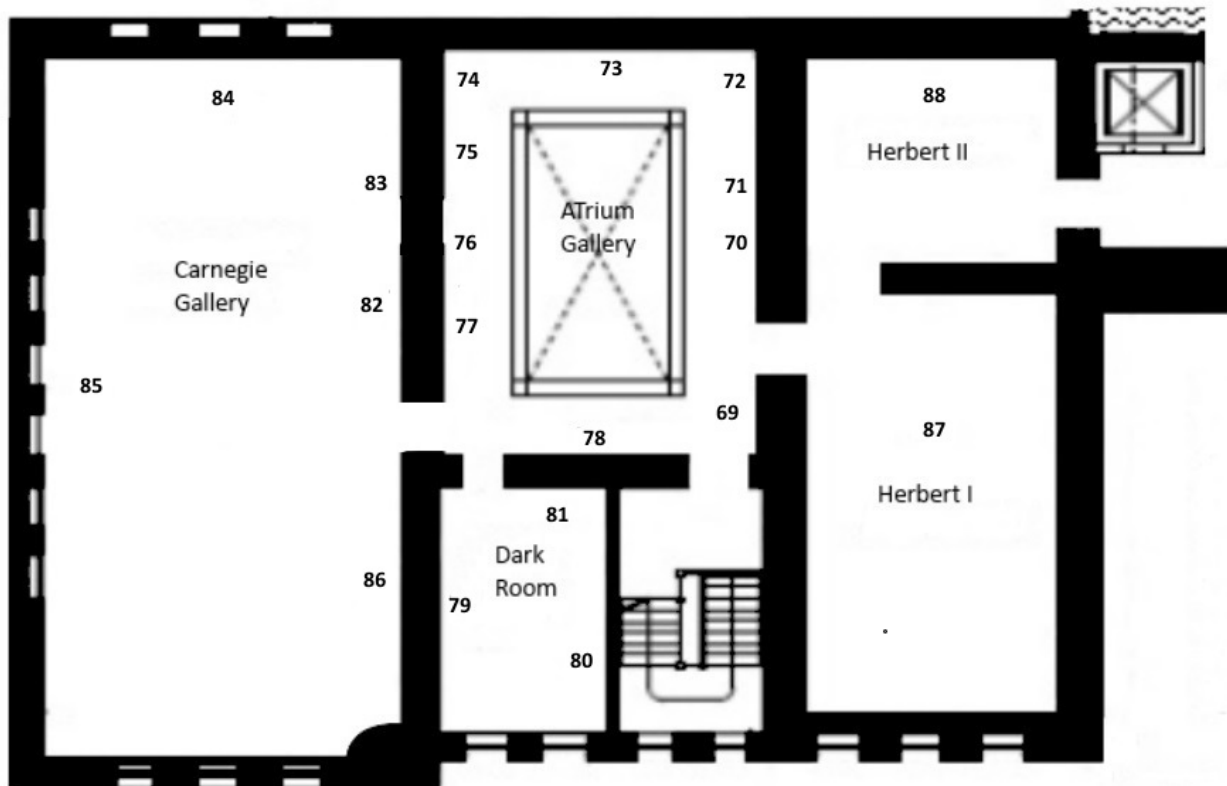
FREE ADMISSION

Tel: +353(0)61 310633; F:+353(0)61 310228; Email: artgallery@limerick.ie; Web www.gallery.limerick.ie

Opening Hours: Monday/Tuesday/Wednesday/Friday & Saturday 10-5.30pm; Thursday 10-8pm; Sunday 12-5.30.

LAST ENTRY 5 & 7.30pm *Closed on Public & Bank Holidays.*

First Floor



ATRIUM GALLERY

69	With A Shadow of a Doubt	2014	mixed media, archive print	49.5 x 76 cm
70	The Lomonosov Ridge [1&2]	2019	mixed media on board	21.5 x 32.5 x 5.5 cm, each
71	Strategic Plan [1&2]	2019	mixed media on board	21.5 x 32 x 5.5 cm, each
72	Diamonds Form Under Pressure	2019	mixed media on on accounting paper	57 x 76.5 x 3.5 cm
73	The Foreign Office [1 & 2]	2019	mixed media on board	61 x 81 c 5.5 cm
74	We Are Going to Get There [1]	2014	pencil on accounting paper	34cm x 48,5 cm
75	27,147 Days Today	2019	mixed media on on accounting paper	49.0 x 36.2 x 4.5 cm
76	Seeds Grow in Darkness	2019	mixed media on on accounting paper	42.5 56.7 x 4.5 cm
77	Search Engine	2019	mixed media on board	76.2 x 56.7 x 4.5 cm
78	One More Time (The Architeuthis Dux Phenomenon)	2017	seamless HD video loop shown on two monitors	Duration: 2'35"

Carnegie Building, Pery Square, Limerick, Ireland.

FREE ADMISSION

Tel: +353(0)61 310633; F:+353(0)61 310228; Email: artgallery@limerick.ie; Web www.gallery.limerick.ie

Opening Hours: Monday/Tuesday/Wednesday/Friday & Saturday 10-5.30pm; Thursday 10-8pm; Sunday 12-5.30.

LAST ENTRY 5 & 7.30pm Closed on Public & Bank Holidays.



DARK ROOM				
79	Between Two Tides [1-115]	2014	mixed media works, 115 parts	variable dimensions
80	North Begins Inside	1997	atlas, PVA	44 x 30 x 4 cm
81	On the Other Side	2016	stainless steel, giclée print, Stereoscopic photograph	51 x 41 x 36 cm
CARNEGIE GALLERY				
82	The Distance of the Horizon at Ground level is 4.7km [1&2]	2014	oil on board	55 x 66 cm [x2]
83	Implosion of the Palaces [1&2]	2014	mixed media on archive print	66.4x 86.4 cm [x2]
84	Parhelion	2012	plaster, acrylic paint, watercolour, 3 solid spheres,	11 cm diameter each
85	Recent Futures [1-24]	2014	pen on archive print, 24 prints in pairs	92 x 71.5 x 5 cm [x12]
86	We Saw It Coming All Along [1 & 2]	2019	mixed media on archive print on board	122 x 81 x 5.5cm
HERBERT I				
87	After Life	2016	Mixed materials included, ship model, euro-pallets, corrugated plastic, 3 videos on monitors, giclée prints on archive paper.	size variable
HERBERT II				
88	The Improbable Always Happens Sometimes	2017	video stills of 12 monitor installation	size variable

Neudecker is represented by Galerie Barbara Thumm, Berlin, Thomas Rehbein Galerie, Cologne, Galerie in Camera, Paris and Galeria Pedro Cera, Lisbon. Courtesy for the works is between the galleries listed.

Further information contact: Siobhan O' Reilly Siobhan.oreilly@limerick.ie

Carnegie Building, Pery Square, Limerick, Ireland.

FREE ADMISSION

Tel: +353(0)61 310633; F:+353(0)61 310228; Email: artgallery@limerick.ie; Web www.gallery.limerick.ie

Opening Hours: Monday/Tuesday/Wednesday/Friday & Saturday 10-5.30pm; Thursday 10-8pm; Sunday 12-5.30.

LAST ENTRY 5 & 7.30pm Closed on Public & Bank Holidays.