

Seasonal analysis of the gut microbiota in adult and young captive Asian black bears in northeast China

Junhong Su^{1,2,3}, Linghao Li¹, Yueying Wang¹, Xiao-xia Ma¹, Zhongren Ma¹, Maikel P. Peppelenbosch², Qiuwei Pan² and Xue Bai^{4,*}

¹ Biomedical Research Center, Northwest Minzu University, Lanzhou, Gansu, 730030, China

² Department of Gastroenterology and Hepatology, Erasmus MC–University Medical Center, 3015 GD, Rotterdam, The Netherlands

³ Medical School, Kunming University of Science and Technology, Kunming, 650500, China

⁴ Key Laboratory of Special Animal Epidemic Disease, Ministry of Agriculture, Institute of Special Animal and Plant Sciences, Chinese Academy of Agricultural Sciences, No. 4899 Juye Street, Changchun, 130112, China.

Submitted: May 27, 2018. Final revision received: December 2, 2018. Accepted: June 12, 2019

*) Corresponding author; e-mail: xuebai_1982@126.com

Supplementary material

Table S1. Demographic information for adult and young captive Asiatic black bears.

	Adult		Young	
Season	September	January	September	January
Gender	Male		Male	
Age (months)*	24–36		Approximately 4	Approximately 7
Body weight (kg)*	Approximately 150.0		10.0–15.0	25.0–30.0
Food intake	Pig's feed, fruits, and vegetables		Piglet's feed, eggs, white sugar, and glucose	Piglet's feed, eggs, white sugar, glucose, some milk, and honey

* Values were estimated by a bear feeder according to their previous records.

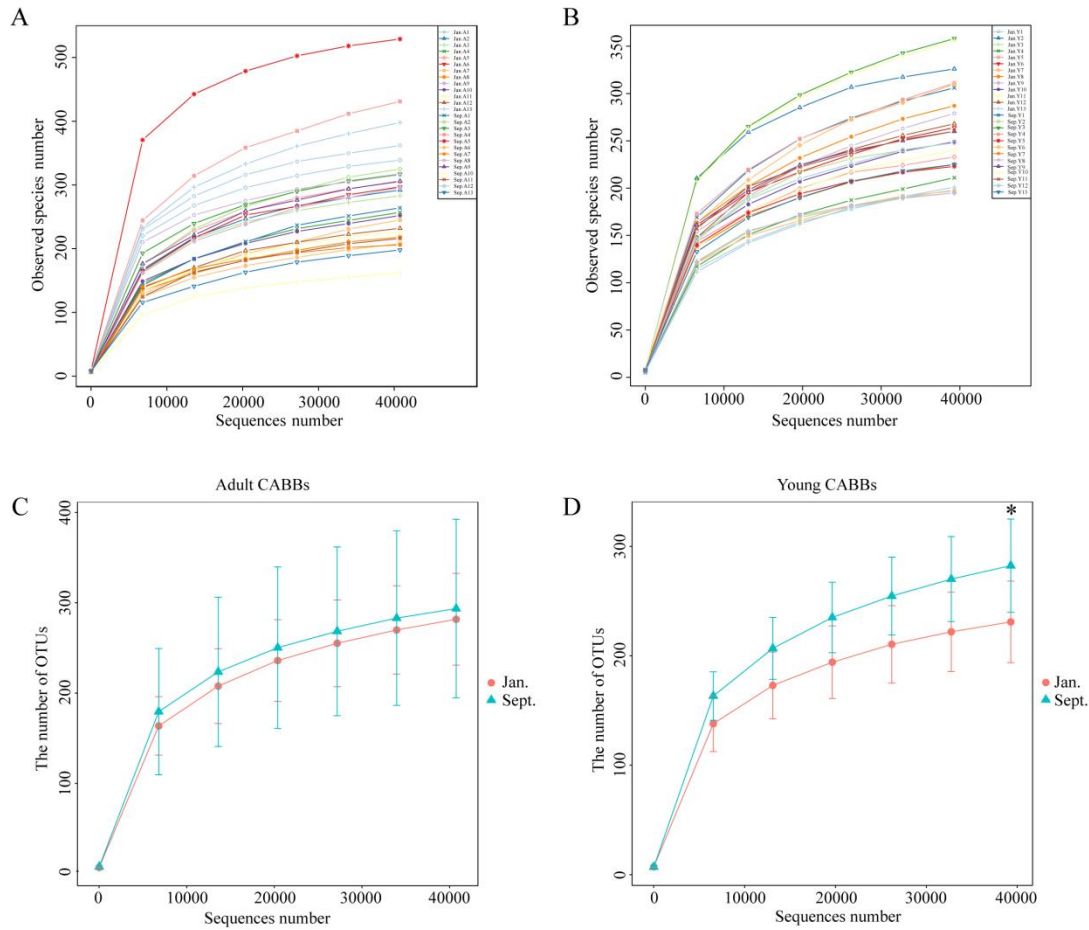


Figure S1. Species accumulation curves. Sequences with $\geq 97\%$ similarity were assigned to the same operational taxonomic units (OTUs). Sample-based rarefaction curves were constructed with sequence counts at 40,000 cutoff value to determine the sequence number of each sample at the same depth. The species accumulation curves were constructed to indicate the increased number of species registered with the increase in sampling effort for both adult (A) and young bear samples (B). An OTU accumulation curve was used to compare the mean of the number of OTUs in samples of both adult (C) and young bears (D) collected between September and January. The number of OTUs is presented as mean \pm SD. Symbol: *, Adjusted P -value < 0.05 ; Kruskal–Wallis test with Bonferroni correction.