

# **Investigating the role of life-history traits in mammalian genomes**

**Yun Tang, Chun Lan Mai, Jian Ping Yu and Da Yong Li\***

Key Laboratory of Southwest China Wildlife Resources Conservation (Ministry of Education), China West  
Normal University, Nanchong 637009, Sichuan, China

Submitted: March 19, 2019. Final revision received: July 8, 2019. Accepted: July 9, 2019

\*) Corresponding author; e-mail: [lidy\\_cwnu@163.com](mailto:lidy_cwnu@163.com)

**Supplementary material**

**Table S1.**

Species, body mass (g), genome size (pg), gestation time (days), weaning period (days), litter size and longevity (years) among species of mammals.

Species	Body mass (g)	Genome size (pg)	Gestation period (days)	Weaning age (days)	Litter size	Longevity (years)
<i>Acinonyx jubatus</i>	54568.96	2.56	92.24	91.42	3.28	20.5
<i>Acomys cahirinus</i>	41.58	2.64	38.54	14	2.43	5.9
<i>Addax nasomaculatus</i>	110538.68	3.98	262.74		1	28
<i>Aepyceros melampus</i>	49589.85	4.69	196.74	150	0.98	25.6
<i>Alouatta caraya</i>	5479.73	3.84	185.92	323.16	1.01	32.4
<i>Apodemus sylvaticus</i>	26.27	3.35	23.68	19.31	5.18	6.3
<i>Artibeus jamaicensis</i>	43.42	2.67	138.7		1	19.2
<i>Ateles geoffroyi</i>	7550.32	3.22	224.09	816.35	1.01	47.1
<i>Ateles paniscus</i>	8488.63	3.47	228.18	805.41	1	46
<i>Bison bison</i>	541275.69	4.9	283.17	293.9	0.99	33.5
<i>Callicebus cupreus</i>	996.01	2.3	129.25	201.85	1.01	26.4
<i>Callithrix jacchus</i>	323.04	3.43	144.44	60.24	2.16	22.8
<i>Camelus bactrianus</i>	489757.96	2.63	397.99	368.13	1.39	35.4
<i>Canis latrans</i>	11026.37	2.82	61.74	43.71	5.96	21.8
<i>Canis lupus</i>	32659.87	2.81	63.81	44.82	4.98	20.6
<i>Carollia perspicillata</i>	18.52	2.84	114.6	35.63	1	17
<i>Cavia porcellus</i>	476	3.83				12
<i>Cebus albifrons</i>	2659.98	3.98	156.59	270.32	1.01	40.4
<i>Cebus apella</i>	2925.83	3.7	155.11	263.12	1.03	46
<i>Cebus capucinus</i>	2992.95	3.84	161.62	514.07	1.01	54
<i>Cebus olivaceus</i>	2859.45	3.4	161	725.86	1.01	47
<i>Chlorocebus aethiops</i>	3716	4.26	168.66	217.76	1	30.8
<i>Dasyopus novemcinctus</i>	4835.58	5.41	131.26	136.87	3.93	22.3
<i>Desmodus rotundus</i>	34.73	2.58	209.35	253.01	1	29.2
<i>Didelphis virginiana</i>	3429.69	4.15	12.85	110.87	12.44	6.6
<i>Dipodomys merriami</i>	39.3	3.52	30.77	20.27	2.2	9.7
<i>Dolichotis patagonum</i>	10250	3.7	97.97	76.28	1.75	14.4

<i>Eidolon helvum</i>	258.31	2.03	164.36	60.83	1.08	21.8
<i>Elephas maximus</i>	2971971.84	4.03	631.27	218.26	1.21	65.5
<i>Eptesicus fuscus</i>	15.7	2.33	52.14	34.45	1.73	19
<i>Eptesicus serotinus</i>	23.9	2.38	65.44	30.8	1.25	21
<i>Equus asinus</i>	234000	4.12				47
<i>Erinaceus europaeus</i>	768.95	3.66	36.31	40	4.58	11.7
<i>Erythrocebus patas</i>	8708.15	3.67	167.2	211.79	1.01	28.3
<i>Eulemur fulvus</i>	2210.67	3.35	120.39	134.64	1.06	35.5
<i>Eulemur macaco</i>	2430.22	3.03	127.49	143.28	1.04	36.2
<i>Eulemur rubriventer</i>	1015	2.59				20
<i>Euphractus sexcinctus</i>	7990	4.16				22.1
<i>Felis silvestris</i>	4214.65	2.96	64.73	74.74	3.52	19
<i>Galago senegalensis</i>	219.04	4.08	127.31	93.93	1.51	17.1
<i>Gorilla gorilla</i>	119425.78	3.75	257.02	920.35	1.03	55.4
<i>Heterocephalus glaber</i>	36.63	2.9	70.49	27.28	11.3	31
<i>Hylobates agilis</i>	5528.75	3.12				49
<i>Hylobates lar</i>	5599.03	3.09	212.37	725.86	1.01	56
<i>Hystrix africaeaustralis</i>	16293.01	2.9	93.49	70.34	1.51	23.1
<i>Lagostomus maximus</i>	4674.22	3.3	155.73	55.68	1.93	10.8
<i>Lemur catta</i>	2348.16	3.28	133.28	126.51	1.17	37.3
<i>Lepus timidus</i>	2882.14	3.25	50.1	23	3.58	18
<i>Litocranius walleri</i>	39402.19	3.66	204.15	248	1	17.3
<i>Loxodonta africana</i>	3837340.16	4.33	657.32	1088.8	0.92	65
<i>Lycaon pictus</i>	21990	2.73	71.18	27.28	8.1	17
<i>Macaca arctoides</i>	9829.02	3.46	176.6	377.66	1.01	29.2
<i>Macaca fascicularis</i>	4410.18	3.43	164.69	283.53	1	39
<i>Macaca mulatta</i>	7718.76	3.37	165.06	304.16	1.01	40
<i>Macaca silenus</i>	6747.63	3.4	172	362.93	1.01	40
<i>Macropus robustus</i>	30759.46	4.46	34.3	366.19	1	22
<i>Macropus rufus</i>	41904.7	3.13	33.5	359.99	1	25
<i>Macrotis lagotis</i>	1544.29	4.29	14.3	93.73	1.6	9.6
<i>Mandrillus sphinx</i>	20142.53	3.5	173.99	348.01	1.02	40

<i>Meriones unguiculatus</i>	57.58	3.64	25.09	23.95	5.01	6.3
<i>Mesocricetus auratus</i>	94.05	3.53	15.49	18.65	8.75	3.9
<i>Microcebus murinus</i>	67.05	3.12	60.34	40.45	2	18.2
<i>Miniopterus schreibersii</i>	11.92	1.93	182.5	60.35	1	22
<i>Miopithecus talapoin</i>	1499.43	3.67	164.38	178.98	1.01	27.7
<i>Muntiacus muntjak</i>	17843.22	3.3	197.25	61	1	18.8
<i>Mus musculus</i>	17.73	3.24	20.25	21.5	5.71	4
<i>Mustela putorius</i>	1011.85	2.81	41.49	54.23	8.49	11.1
<i>Myocastor coypus</i>	6345.25	3.6	131.84	52.83	5.34	8.5
<i>Myotis lucifugus</i>	8.43	2.26	59.79	26	1	34
<i>Myotis myotis</i>	19.2	2.29	73	42	1.75	37.1
<i>Myotis mystacinus</i>	5.15	1.93			1	24
<i>Myotis velifer</i>	10.24	2.3	63.77	43	1	11.3
<i>Myotis yumanensis</i>	5.25	2.3			1	14
<i>Myrmecophaga tridactyla</i>	28500	4.32				31
<i>Neotoma floridana</i>	272.05	3.82	34.84	35.14	3.06	8.6
<i>Noctilio leporinus</i>	58.5	2.5				11.8
<i>Nyctereutes procyonoides</i>	4330	3.27	61.84	49.69	6.36	16.6
<i>Nycticebus coucang</i>	811.36	3.58	190.82	181.21	1.06	25.8
<i>Octodon degus</i>	206.64	4.31	90.59	31.12	5.31	14
<i>Orycteropus afer</i>	54262.6	5.44	222.05	40.92	1.1	29.8
<i>Otolemur crassicaudatus</i>	1169.14	3.98	131.13	124.62	1.28	22.7
<i>Pan troglodytes</i>	44981.55	3.68	229.24	1260.81	1.03	59.4
<i>Panthera leo</i>	156349.73	2.95	108.44	197.86	2.71	27
<i>Panthera tigris</i>	169493.07	2.71	105.31	118.55	2.56	26.3
<i>Papio hamadryas</i>	14316.05	3.53	179.53	363.96	1.01	37.5
<i>Perameles gunnii</i>	952.73	4.42	12.4	59.99	2.36	6.1
<i>Peromyscus eremicus</i>	22.89	3.3	27.35	20.81	2.51	7.4
<i>Peromyscus maniculatus</i>	19.67	4.36	25.78	22.49	4.62	8.3
<i>Peromyscus polionotus</i>	13.59	3.57	23.8	24.24	3.15	5.5
<i>Phascolarctos cinereus</i>	6208.37	3.69	34.4	347.53	1.01	22.1
<i>Phyllostomus discolor</i>	33	2.55				9

<i>Phyllostomus hastatus</i>	90.77	2.61	123.39	72.82	0.99	18
<i>Pipistrellus subflavus</i>	6.01	2.61	45.71	31.46	1.98	14.8
<i>Pongo pygmaeus</i>	56278.61	3.79	257.35	1088.8	1.04	59
<i>Potorous tridactylus</i>	1168.84	3.6	35.78	167.33	1	14.5
<i>Procavia capensis</i>	3070.3	4.06	228.07	90.99	2.5	14.8
<i>Procyon lotor</i>	6321.67	2.85	64.49	97.04	3.3	21
<i>Pteropus giganteus</i>	659.54	2.2	168.21	152.08	1	40
<i>Pteropus poliocephalus</i>	666.54	2.32	187.72	120	1	23.6
<i>Rangifer tarandus</i>	102004.39	3.41	220.14	136.87	1.5	21.8
<i>Rattus norvegicus</i>	264.43	3.36	21.81	25.37	9	3.8
<i>Rattus rattus</i>	126.56	3.06	23.45	28	5.74	4.2
<i>Rhinolophus ferrumequinum</i>	20.96	2.23	91.24	45.18	0.99	30.5
<i>Rhinolophus hipposideros</i>	5.59	1.92	75.51	33.2	1	29.4
<i>Rousettus aegyptiacus</i>	135.15	2.11	123.39	105	1.07	22.9
<i>Saccopteryx bilineata</i>	7.54	3.16		59.99	0.99	6
<i>Saimiri sciureus</i>	779.63	3.3	165.41	177.41	1	30.2
<i>Sarcophilus harrisii</i>	7816.13	3.31	26	243.33	2.89	13
<i>Setifer setosus</i>	249.86	5.03	57.63	25.22	3.24	14.1
<i>Sigmodon hispidus</i>	116.95	3.96	26.9	15.06	5.58	5.2
<i>Sus scrofa</i>	91024.86	2.81	116.75	101.44	4.81	27
<i>Tachyglossus aculeatus</i>	4250	2.89				49.5
<i>Tamandua tetradactyla</i>	5157.5	4.11	160		1	19
<i>Tapirus indicus</i>	303397.44	2.75	390.55	211.71	1	36.5
<i>Tragelaphus angasii</i>	112308.38	3.94	219.99	212.91	1	18.5
<i>Trichosurus vulpecula</i>	2293.7	3	17.4	191.59	1.01	15.9
<i>Tupaia glis</i>	135.85	3.55	45.69	34.27	2.28	12.4
<i>Urocyon cinereoargenteus</i>	3721.24	3.07	61.48	62.72	3.76	16.2
<i>Ursus arctos</i>	219237.46	2.75	145.26	182.5	2.12	40
<i>Vicugna vicugna</i>	47511.04	3.24	345.3	309.89	1	31.6
<i>Vulpes vulpes</i>	4354.13	2.85	52.49	50.71	4.59	21.3

**Table S2.**

Genbank accession numbers for the gene sequences used to generate the phylogeny.

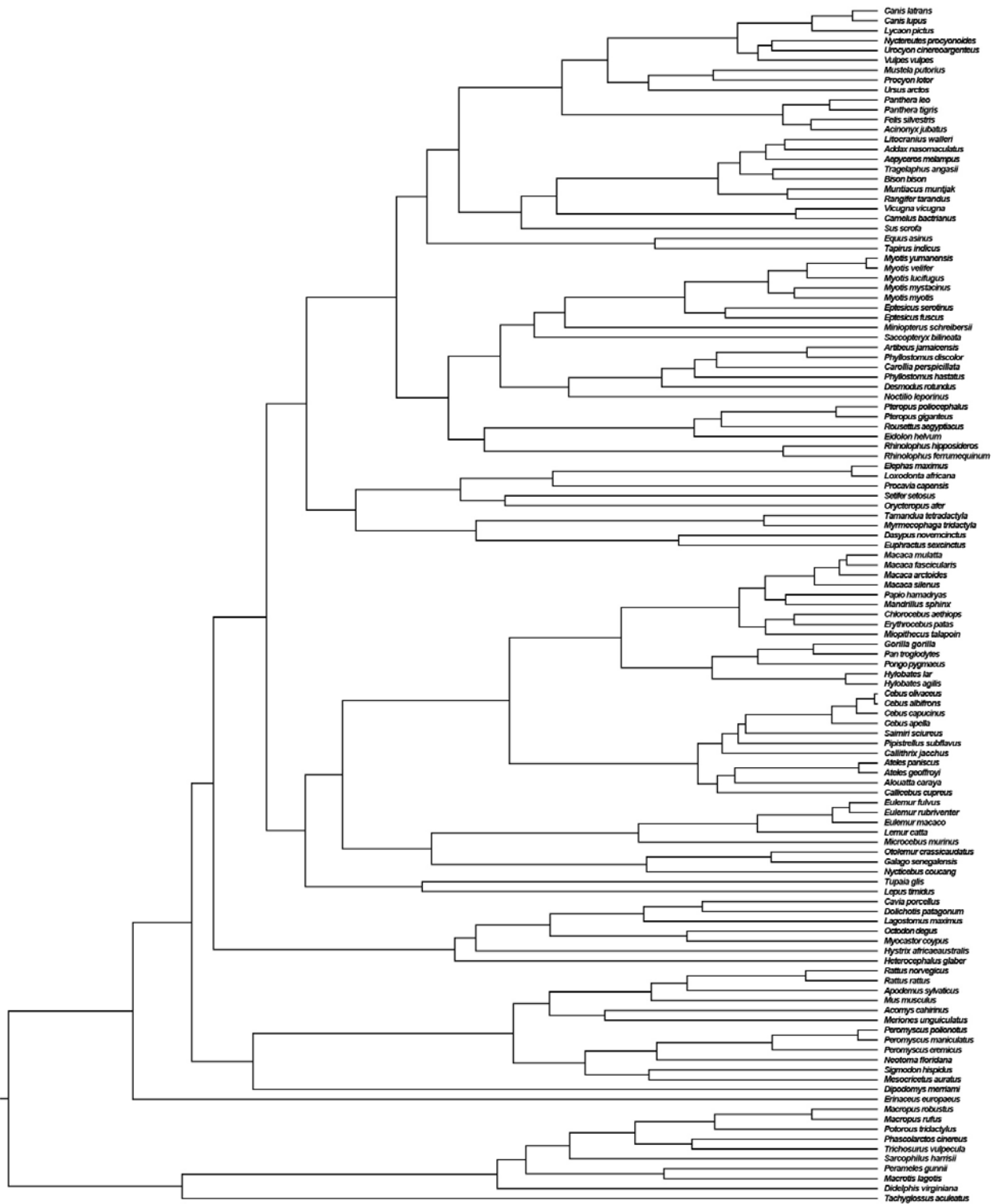
Species	12S	16S	COI	Cytb	ND2	ND4	RAG1	TYR
<i>Acinonyx jubatus</i>	AF344830.1	KR132579.1	AF344830.1	AF344830.1	AF344830.1	AF344830.1		DQ082344.1
<i>Acomys cahirinus</i>	NC_020758.1	NC_020758.1	NC_020758.1	NC_020758.1	NC_020758.1	NC_020758.1		NC_020758.1
<i>Addax nasomaculatus</i>	JN632591.1	JN632591.1	JN632591.1	JN632591.1	JN632591.1	JN632591.1		
<i>Aepyceros melampus</i>	JN632592.1	JN632592.1	JN632592.1	JN632592.1	JN632592.1	JN632592.1		
<i>Alouatta caraya</i>		NC_021938.1	KC757384.1	KC757384.1	KC757384.1	KC757384.1	HM759098.1	
<i>Apodemus sylvaticus</i>	AJ311131.1			AJ298605.1			AB303243.1	
<i>Artibeus jamaicensis</i>	NC_002009.1	NC_002009.1		NC_002009.1	NC_002009.1	NC_002009.1	HM759090.1	
<i>Ateles geoffroyi</i>		AB116026.1		KR902382.1			AY065918.1	HM757563.1
<i>Ateles paniscus</i>				KJ452765.1			HM759112.1	
<i>Bison bison</i>	NC_012346.1	NC_012346.1	NC_012346.1		NC_012346.1	NC_012346.1		
<i>Callicebus cupreus</i>	NC_021965.1	NC_021965.1	NC_021965.1			KU694922.1		
<i>Callithrix jacchus</i>	NC_025586.1	NC_025586.1	NC_025586.1	NC_025586.1	NC_025586.1	NC_025586.1		
<i>Camelus bactrianus</i>	EF212037.2	EF212037.2		EF212037.2				
<i>Canis latrans</i>	EU789789.1	EU789789.1	EU789789.1	EU789789.1	EU789789.1	EU789789.1		
<i>Canis lupus</i>	KU696411.1	KU696411.1	KU696411.1	KU696411.1	KU696411.1	KU696411.1	GU167550.1	
<i>Carollia perspicillata</i>	NC_022422.1	NC_022422.1	NC_022422.1	NC_022422.1	NC_022422.1	NC_022422.1		HG380329.1
<i>Cavia porcellus</i>	KP100656.1	KP100656.1	KP100656.1	KP100656.1	KP100656.1	KP100656.1		
<i>Cebus albifrons</i>		NC_002763.1	NC_002763.1	NC_002763.1	NC_002763.1	NC_002763.1	HM759115.1	HM757567.1
<i>Cebus apella</i>		JN380205.1	JN380205.1	JN380205.1	JN380205.1	JN380205.1	HM759116.1	HM757568.1
<i>Cebus capucinus</i>				FJ529110.1				
<i>Cebus olivaceus</i>				FJ529107.1			HM759117.1	HM757570.1
<i>Chlorocebus aethiops</i>	NC_007009.1	NC_007009.1	NC_007009.1	NC_007009.1	NC_007009.1	HM759026.1	HM757473.1	
<i>Dasyurus novemcinctus</i>	KT818542.1	KT818542.1	KT818542.1	KT818542.1	NC_001821.1	KT818542.1		
<i>Desmodus rotundus</i>	NC_022423.1	NC_022423.1	NC_022423.1	NC_022423.1	NC_022423.1	NC_022423.1		
<i>Didelphis virginiana</i>	Z29573.1	Z29573.1					AF303969.1	AY059713.1
<i>Dipodomys merriami</i>	JN208387.1		EU107517.1	AF173502.1				
<i>Dolichotis patagonum</i>	AF433917.1			GU136724.1				
<i>Eidolon helvum</i>		AF293648.1		AB355794.1	AY504585.1		EU617950.1	EU617900.1
<i>Elephas maximus</i>	EF588275.2	EF588275.2	EF588275.2	EF588275.2	EF588275.2	EF588275.2	AY125021.1	JN633303.1
<i>Eptesicus fuscus</i>	MF143474.1	MF143474.1		MF143474.1			EF397724.1	GU328058.1

<i>Eptesicus serotinus</i>	NC_022474.1	NC_022474.1	NC_022474.1	NC_022474.1	NC_022474.1	NC_022474.1		EU786908.1
<i>Equus asinus</i>	MG931481.1	MG931481.1	MG931481.1	MG931481.1	MG931481.1	MG931481.1		
<i>Erinaceus europaeus</i>	NC_002080.2	NC_002080.2	NC_002080.2	NC_002080.2	NC_002080.2	NC_002080.2		
<i>Erythrocebus patas</i>	NC_021947.1	NC_021947.1	NC_021947.1	NC_021947.1	NC_021947.1	HM759031.1	HM757478.1	
<i>Eulemur fulvus</i>		AB371086.1	AB371086.1	AB371086.1	AB371086.1	AB371086.1	EU342312.1	HM757608.1
<i>Eulemur macaco</i>		AB371088.1	AB371088.1	AB371088.1	AB371088.1	AB371088.1		
<i>Eulemur rubriventer</i>	NC_026098.1	NC_026098.1	NC_026098.1	NC_026098.1	NC_026098.1			
<i>Euphractus sexcinctus</i>	KX151979.1	KX151979.1	KX151979.1	KX151979.1	KX151979.1	KX151979.1	AY011867.1	AY011922.1
<i>Felis silvestris</i>	KP202278.1	KP202278.1	KP202278.1	KP202278.1	KP202278.1	KP202278.1		DQ082331.1
<i>Galago senegalensis</i>	AB371092.1	AB371092.1	AB371092.1	AB371092.1	AB371092.1	HM759166.1	HM757622.1	
<i>Gorilla gorilla</i>		KF914214.1	KF914214.1	KF914214.1	KF914214.1	KF914214.1	HM759077.1	HM757529.1
<i>Heterocephalus glaber</i>	HQ689652.1	HQ689652.1	HQ689652.1	HQ689652.1	HQ689652.1	HQ689652.1		
<i>Hylobates agilis</i>		NC_014042.1	NC_014042.1	NC_014042.1	NC_014042.1	NC_014042.1		HM757521.1
<i>Hylobates lar</i>		NC_002082.1	NC_002082.1	NC_002082.1	NC_002082.1	NC_002082.1	HM759071.1	HM757522.1
<i>Hystrix africaeaustralis</i>	U12448.1			MH186593.1				FM162103.1
<i>Lagostomus maximus</i>						KT003537.1		
<i>Lemur catta</i>		KJ944228.1	KJ944228.1	KJ944228.1	KJ944228.1	KJ944228.1	HM759158.1	
<i>Lepus timidus</i>	KR030070.1	KR030070.1	KR030070.1	KR030070.1	KR030070.1	KR030070.1		
<i>Litocranius walleri</i>	NC_020716.1	NC_020716.1	NC_020716.1	NC_020716.1	NC_020716.1	NC_020716.1		
<i>Loxodonta africana</i>	DQ316069.1	DQ316069.1	DQ316069.1	DQ316069.1	DQ316069.1	DQ316069.1		
<i>Lycaon pictus</i>	NC_028427.1	NC_028427.1	NC_028427.1	NC_028427.1	NC_028427.1	NC_028427.1		
<i>Macaca arctoides</i>	NC_025201.1	NC_025201.1	NC_025201.1	NC_025201.1	NC_025201.1	HM759033.1	HM757481.1	
<i>Macaca fascicularis</i>	KM851032.1	KM851032.1	KM851032.1	KM851032.1	KM851032.1		HM757483.1	
<i>Macaca mulatta</i>		JQ821843.1	JQ821843.1	JQ821843.1	JQ821843.1	JQ821843.1		AY012016.1
<i>Macaca silenus</i>		NC_025221.1	NC_025221.1	NC_025221.1	NC_025221.1	NC_025221.1		HM757491.1
<i>Macropus robustus</i>	KY996506.1	KY996506.1	KY996506.1	KY996506.1		KY996506.1		
<i>Macropus rufus</i>	KY996501.1	KY996501.1	KY996501.1	KY996501.1	KY996501.1	KY996501.1		
<i>Macrotis lagotis</i>	AF131246.2	AJ639871.1	NC_006520.1	NC_006520.1	NC_006520.1	NC_006520.1		
<i>Mandrillus sphinx</i>	NC_021956.1	NC_021956.1	NC_021956.1	NC_021956.1	NC_021956.1			
<i>Meriones unguiculatus</i>	NC_023263.1	NC_023263.1	NC_023263.1	NC_023263.1	NC_023263.1	NC_023263.1		FN984756.1
<i>Mesocricetus auratus</i>	EU660218.1	EU660218.1	EU660218.1	EU660218.1	EU660218.1	EU660218.1	AB164039.1	FM162083.1
<i>Microcebus murinus</i>	NC_028718.1	NC_028718.1	NC_028718.1	NC_028718.1	NC_028718.1	HM759147.1	HM757601.1	
<i>Miniopterus schreibersii</i>	GU328042.1	GU328042.1			AY169443.1			EU786917.1
<i>Miopithecus talapoin</i>	JQ256996.1	JQ256996.1	JQ256996.1					

<i>Muntiacus muntjak</i>	AY225986.1	AY225986.1			AY225986.1	AY225986.1		
<i>Mus musculus</i>	KY018919.1	KY018919.1	HQ586004.1	KY018919.1	KY018919.1	KY018919.1	AB125833.1	AY215075.1
<i>Mustela putorius</i>	HM106318.1	HM106318.1	HM106318.1	HM106318.1	HM106318.1	HM106318.1	AB109352.1	EF987997.1
<i>Myocastor coypus</i>	MH182628.1	MH182628.1	MH182628.1	MH182628.1	MH182628.1	MH182628.1		AY011949.1
<i>Myotis lucifugus</i>	NC_029849.1	NC_029849.1	NC_029849.1	NC_029849.1	NC_029849.1	NC_029849.1		KC747711.1
<i>Myotis myotis</i>	KT901455.1	KT901455.1	KT901455.1	KT901455.1	KT901455.1	KT901455.1		DQ120812.1
<i>Myotis mystacinus</i>			AY665167.1				EU360601.1	
<i>Myotis velifer</i>	AY495509.1	AY495509.1		EU680300.1				HQ671604.1
<i>Myotis yumanensis</i>	NC_036319.1	NC_036319.1	NC_036319.1	NC_036319.1	NC_036319.1	NC_036319.1		HQ671605.1
<i>Myrmecophaga tridactyla</i>	MH142215.1	MH142215.1	MH142215.1	MH142215.1	MH142215.1	MH142215.1		KF543820.1
<i>Neotoma floridana</i>	NC_002765.1		AF294344.1					
<i>Noctilio leporinus</i>	KU743910.1	KU743910.1	KU743910.1	KU743910.1	KU743910.1	KU743910.1	JN633616.1	AF316477.1
<i>Nyctereutes procyonoides</i>	KF709435.1	KF709435.1	KF709435.1	KF709435.1	KF709435.1	KF709435.1		
<i>Nycticebus coucang</i>	NC_002765.1	NC_002765.1	NC_002765.1	NC_002765.1	NC_002765.1	HM759169.1	HM757625.1	
<i>Octodon degus</i>	HM544134.1	HM544134.1	HM544134.1	HM544134.1	HM544134.1	HM544134.1		FM162108.1
<i>Orycteropus afer</i>	NC_002078.1	NC_002078.1	NC_002078.1	NC_002078.1	NC_002078.1	NC_002078.1		AY011935.1
<i>Otolemur crassicaudatus</i>	KJ434961.1	KJ434961.1	KJ434961.1	KJ434961.1	KJ434961.1	KJ434961.1	HM759162.1	
<i>Pan troglodytes</i>	JN191201.1	JN191201.1	JN191201.1	JN191201.1	JN191201.1	JN191201.1	HM759079.1	
<i>Panthera leo</i>	KP001495.1	KP001495.1	KP001495.1	KP001495.1	KP001495.1	KP001495.1	AB109364.1	DQ082362.1
<i>Panthera tigris</i>	KJ508413.2	KJ508413.2	KJ508413.2	KJ508413.2	KJ508413.2	KJ508413.2	AB109366.1	
<i>Papio hamadryas</i>	NC_001992.1	NC_001992.1	NC_001992.1	NC_001992.1	NC_001992.1		HM757500.1	
<i>Perameles gunnii</i>	AJ639872.1	AJ639872.1	AJ639872.1	AJ639872.1	AJ639872.1	AJ639872.1		
<i>Peromyscus eremicus</i>			EF989976.1					
<i>Peromyscus maniculatus</i>	NC_039921.1	NC_039921.1	NC_039921.1	NC_039921.1	NC_039921.1	NC_039921.1		
<i>Peromyscus polionotus</i>	KY707301.1	KY707301.1	KY707301.1	KY707301.1	KY707301.1	KY707301.1		JF938908.1
<i>Phascolarctos cinereus</i>	NC_008133.1	NC_008133.1	NC_008133.1	NC_008133.1		NC_008133.1	AF303973.1	JN633291.1
<i>Phyllostomus discolor</i>		JF455238.1					FN641681.1	
<i>Phyllostomus hastatus</i>	AF411541.1	AF411541.1		FJ155479.1				AF316479.1
<i>Pipistrellus subflavus</i>							GU328103.1	
<i>Pongo pygmaeus</i>	NC_001646.1	NC_001646.1	NC_001646.1	NC_001646.1	NC_001646.1		HM757533.1	
<i>Potorous tridactylus</i>	AJ639873.1	AJ639873.1	AJ639873.1	AJ639873.1	AJ639873.1	AJ639873.1	AY125033.1	
<i>Procyon capensis</i>	AB096865.1	AB096865.1	AB096865.1	AB096865.1	AB096865.1	AB096865.1		JX869932.1
<i>Procyon lotor</i>	AB291073.1	AB291073.1	AB291073.1	AB291073.1	AB291073.1	AB291073.1	AB109359.1	DQ660279.1
<i>Pteropus giganteus</i>	FJ588882.1			FJ561381.1	AY504590.1		EU617964.1	EU617913.1



<i>Pteropus poliocephalus</i>	FJ588888.1			FJ561387.1			EU617971.1	EU617920.1
<i>Rangifer tarandus</i>	AB245426.1	AB245426.1	AB245426.1	AB245426.1	AB245426.1	AB245426.1		
<i>Rattus norvegicus</i>	DQ673914.1	DQ673914.1	DQ673914.1	EU349782.1	DQ673914.1	DQ673914.1	AB164045.1	AY303209.1
<i>Rattus rattus</i>	EU273707.1	EU273707.1	NC_012374.1	EU273707.1	NC_012374.1	NC_012374.1		JF437043.1
<i>Rhinolophus ferrumequinum</i>	KT783534.1	KT783534.1	KT783534.1	KT783534.1	KT783534.1	KT783534.1	JN601117.1	KP176010.1
<i>Rhinolophus hipposideros</i>			KC978714.1				KP176008.1	
<i>Rousettus aegyptiacus</i>	AB205183.1	AB205183.1	AB205183.1	AB205183.1	AB205183.1	AB205183.1	EU617979.1	EU617927.1
<i>Saccopteryx bilineata</i>	AF263213.1	AF263213.1		EF584202.1	AY504523.1		JN633611.1	AF316485.1
<i>Saimiri sciureus</i>		FJ785425.1	FJ785425.1	FJ785425.1	FJ785425.1	FJ785425.1	HM759131.1	HM757585.1
<i>Sarcophilus harrisii</i>	JX475467.1	JX475467.1	JX475467.1	JX475467.1	JX475467.1	JX475467.1		
<i>Setifer setosus</i>	KX015171.1						KX015350.1	
<i>Sigmodon hispidus</i>	NC_035572.1	NC_035572.1	NC_035572.1	NC_035572.1	NC_035572.1	NC_035572.1		
<i>Sus scrofa</i>	AB292606.1	AB292606.1	AB292606.1		AB292606.1	AB292606.1	AY059705.1	NM_001128481.1
<i>Tachyglossus aculeatus</i>	NC_003321.1	NC_003321.1	NC_003321.1	NC_003321.1	NC_003321.1	NC_003321.1	AF303971.1	JN633277.1
<i>Tamandua tetradactyla</i>	NC_004032.1	NC_004032.1	NC_004032.1	NC_004032.1	NC_004032.1	NC_004032.1	AY011869.1	LT852680.1
<i>Tapirus indicus</i>	KJ417810.1	KJ417810.1	KJ417810.1	KJ417810.1	KJ417810.1	KJ417810.1	AY011914.1	AY011976.1
<i>Tragelaphus angasii</i>	NC_020748.1	NC_020748.1	NC_020748.1	NC_020748.1	NC_020748.1	NC_020748.1		
<i>Trichosurus vulpecula</i>	AF357238.1	AF357238.1					AF303968.1	JN633290.1
<i>Tupaia glis</i>	AY862175.1	JF795308.1						FJ648356.1
<i>Urocyon cinereoargenteus</i>	NC_026723.1	NC_026723.1	NC_026723.1	NC_026723.1	NC_026723.1	NC_026723.1		
<i>Ursus arctos</i>	AP012592.1	AP012592.1	AP012592.1	AP012592.1	AP012592.1	AP012592.1	AB109361.1	AY011980.1
<i>Vicugna vicugna</i>	FJ456892.1	FJ456892.1	DQ534056.1	FJ456892.1	FJ456892.1	FJ456892.1		
<i>Vulpes vulpes</i>	KP342452.1	KP342452.1	KP342452.1	KP342452.1	KP342452.1	KP342452.1		



**Figure S1.** The phylogenetic tree of the 121 species of mammals used in the comparative analysis.