

***Fungia fungites* (Linnaeus, 1758) (Scleractinia, Fungiidae) is a species complex that conceals large phenotypic variation and a previously unrecognized genus**

*Yutaro Oku*

Interdisciplinary Graduate School of Agriculture and Engineering, University of Miyazaki, 1-1

Gakuen-kibanadai-nishi, Miyazaki, Miyazaki, 889-2192, Japan

*Kenji Iwao*

Akajima Marine Science Laboratory, 179 Aka, Zamami, Okinawa 901-3311, Japan

Present address: Graduate School of Agriculture, Ehime University, 3-5-7 Tarumi, Matsuyama,

Ehime, 790-8566, Japan

*Bert W. Hoeksema*

Naturalis Biodiversity Center, PO Box 9517, 2300 RA Leiden, The Netherlands

Groningen Institute for Evolutionary Life Sciences, University of Groningen, Groningen, The

Netherlands

*Naoko Dewa*

Kagoshima City Aquarium, 3-1 Honkoshin-machi, Kagoshima, Kagoshima 892-0814, Japan

*Hiroyuki Tachikawa*

Coastal Branch of Natural History Museum and Institute, Chiba, 123 Yoshio, Katsuura, Chiba  
299-5242, Japan

*Tatsuki Koido*

Interdisciplinary Graduate School of Agriculture and Engineering, University of Miyazaki, 1-1  
Gakuen-kibanadai-nishi, Miyazaki, Miyazaki, 889-2192, Japan  
Kuroshio Biological Research Foundation, 560 Nishidomari, Otsuki, Hata, Kochi 788-0333,  
Japan

*Hironobu Fukami*

Department of Marine Biology and Environmental Sciences, Faculty of Agriculture, University  
of Miyazaki, 1-1 Gakuen-kibanadai-nishi, Miyazaki, Miyazaki, 889-2192, Japan

*hirofukami@cc.miyazaki-u.ac.jp*

**Supplementary material**

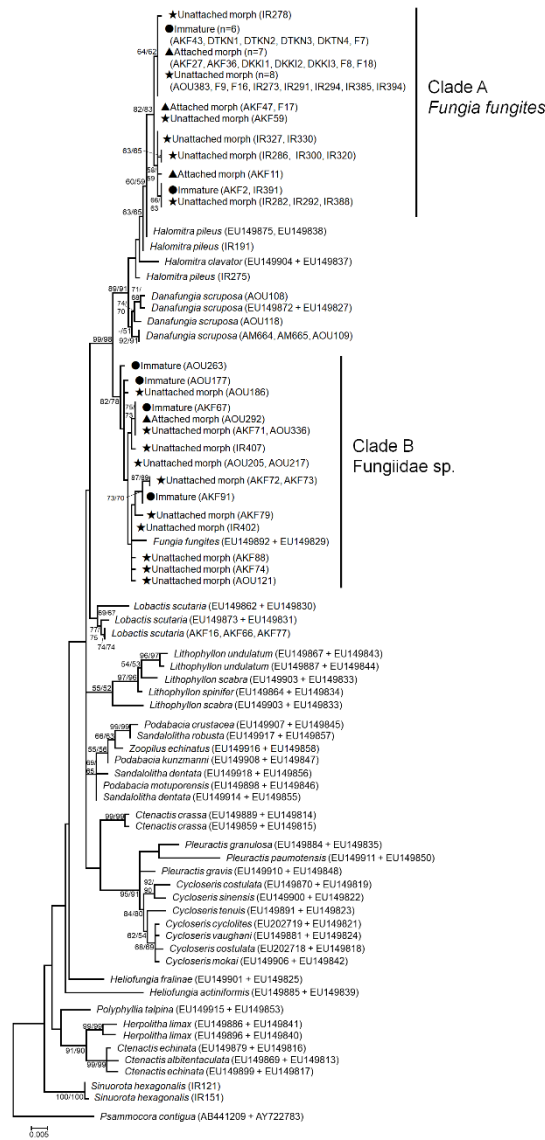


FIGURE S1 Maximum likelihood (ML) tree based on COI-ITS sequences. Numbers on main branches show percentages of bootstrap values (>50%) in neighbor-joining (NJ) and ML.