

Living in a tiny world: reproductive biology and population
ecology of the Neotropical miniature frog *Euparkerella* aff.
brasiliensis (Terraranae, Strabomantidae)

Luciana Ardenghi Fusinato^{1,*}, Bruno Lamy T. Diniz², Andreza Soares de Siqueira¹,
Monique Van Sluys¹, Fernando Sequeira³, Carlos F. Duarte Rocha¹

1 - Departamento de Ecologia, Instituto de Biologia Roberto Alcântara Gomes, Universidade do Estado do Rio de Janeiro, R. São Francisco Xavier 524, CEP 20550-013, Rio de Janeiro, RJ, Brazil

2 - Faculdade de Formação de Professores, Universidade do Estado do Rio de Janeiro, R. Francisco Portela, 1470 - Patronato, 24435-005, São Gonçalo, RJ, Brazil

3 - CIBIO Research Centre in Biodiversity and Genetic Resources, InBIO, Universidade do Porto, Vairão, Portugal

*Corresponding author; e-mail: lufusinato@gmail.com

Supplementary material

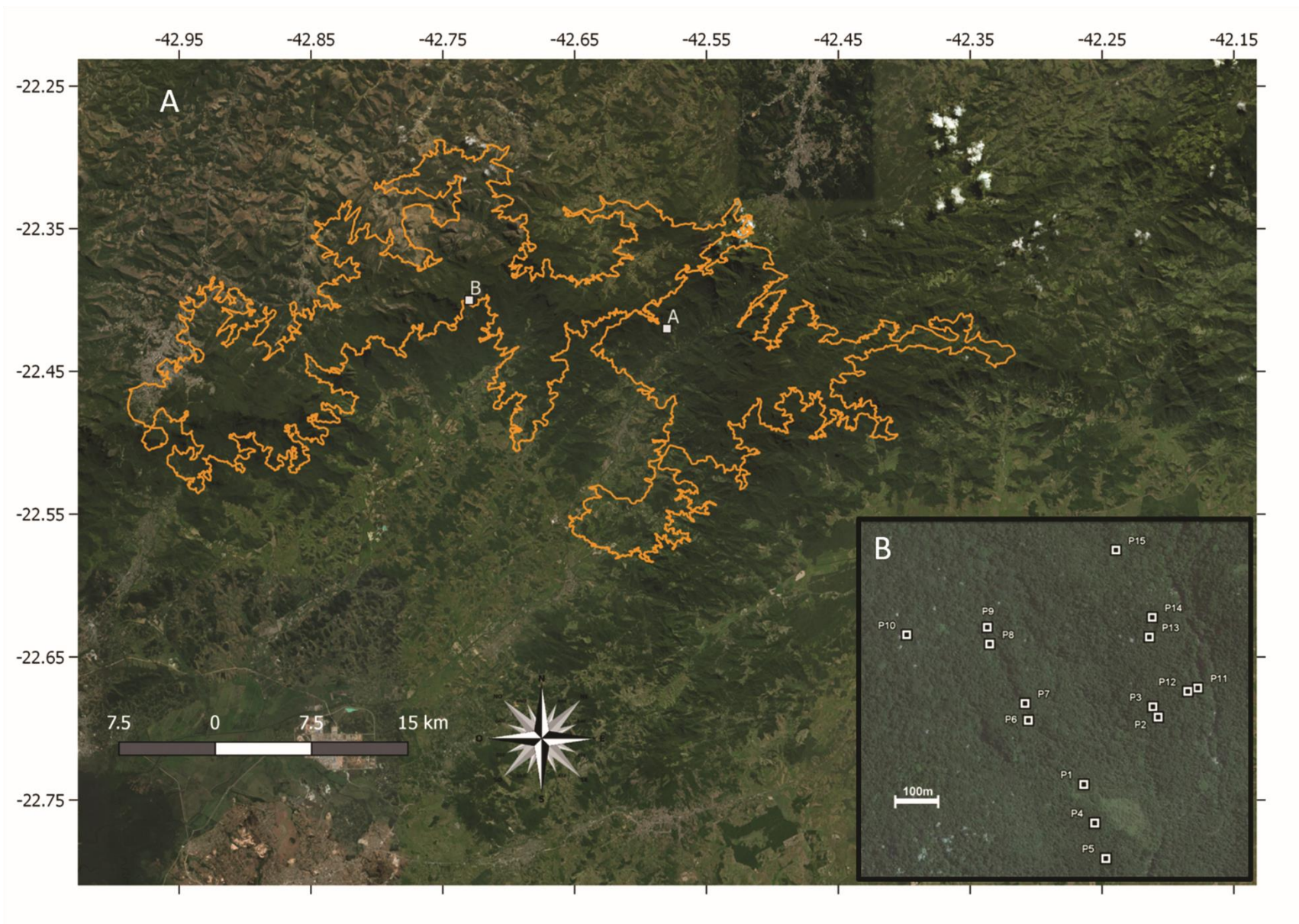


Figure S1. Study Area. A – Study areas in Parque Estadual dos Três Picos, Rio de Janeiro, Brazil, represented by squares: A – Fazenda Santa Bárbara; B – Reserva Ecológica de Guapiçu. Orange lines represent the boundaries of the Park. B - A detail of study area B, with the distribution of 15 permanent plots of 4x4 m used for mark-recapture study (squares used for placemark are larger than plots). Alphanumeric codes correspond to our field number for each quadrat.

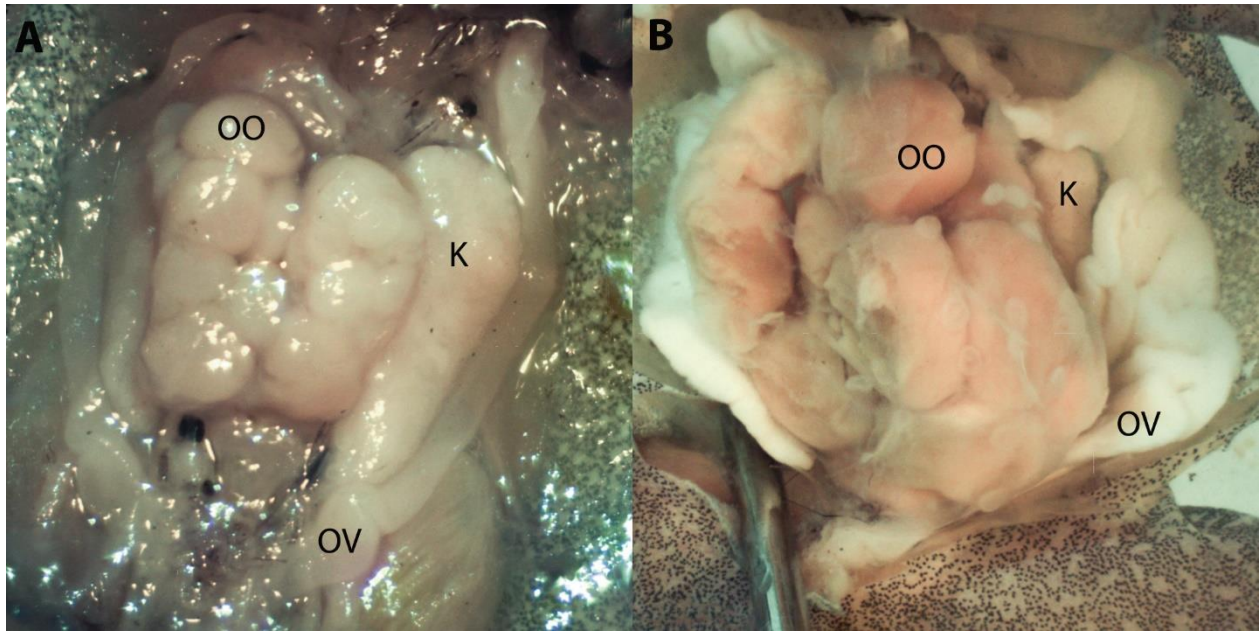


Figure S2. Urogenital apparatus of *Euparkerella* aff. *brasiliensis*. (A). Young female (SVL = 13.9 mm). (B). Mature female with yolkly oocytes (SVL = 17.8 mm). OO = Oocyte; OV = Oviduct; K = Kidney. Specimens collected from the Fazenda Santa Bárbara, Parque Estadual dos Três Picos, Municipality of Cachoeiras de Macacu, RJ.

Table S1. Presence/absence data of captured individuals by sampled plot for each survey of *Euparkerella* aff. *brasiliensis* in Reserva Ecológica de Guapiaçu, Municipality of Cachoeiras de Macacu, Rio de Janeiro.

	2010						2011					2012	NP
	Mar	May	Jul	Sep	Nov	Jan	Mar	May	Jul	Oct	Dec	Feb	
P1	0	0	0	0	0	0	0	0	0	0	0	0	0
P2	1	1	1	1	1	0	0	0	1	0	1	0	7
P3	1	1	1	1	1	1	1	0	1	1	0	3	10
P4	1	0	0	0	0	0	0	0	0	0	0	0	1
P5	1	1	1	0	0	1	1	1	1	0	1	1	9
P6	0	0	1	0	0	0	0	0	0	0	1	0	2
P7	0	0	0	0	0	0	0	0	0	0	0	0	0
P8	1	1	1	1	1	1	1	1	1	1	1	1	12
P9	1	1	1	0	0	1	0	0	1	0	0	1	6
P10	1	1	1	0	1	1	1	1	0	0	1	1	9
P11	0	0	0	0	0	0	1	0	0	0	0	0	1
P12	0	0	0	0	1	1	0	0	0	0	0	0	2
P13	1	0	0	0	0	0	0	0	0	0	0	0	1
P14	0	0	0	0	1	0	0	0	0	0	1	0	2
P15	0	1	0	1	0	1	1	0	0	0	0	0	4
NP	8	7	7	4	6	7	6	3	5	2	6	5	

Table S2. History of capture and recapture encounters for *Euparkerella* aff. *brasiliensis* in Reserva Ecológica de Guapiaçu, Municipality of Cachoeiras de Macacu, Rio de Janeiro, RJ.

2010					2011					2012	N		
Mar	May	Jul	Sep	Nov	Jan	Mar	May	Jul	Oct	Dec		Feb	
C													20
C	R												1
C		R											2
C			R										1
	C												12
	C	R											2
	C	R	R										1
		C											9
		C		R									1
			C										3
				C									6
				C	R								1
					C								14
						C							12
						C	R						1
						C		R					1
						C					R		1
							C						2
							C				R		1
								C					5
								C			R		1
									C				2
										C			8
											C		14
											Total	121	
											Captures Without Recaptures	107	
											Captures With Recaptures	14	

Legend: C – capture; R – recapture, N – number of individuals that present the same history of encounters.