

The enigmatic Amazonian genus *Eutrachelophis*: morphological
evidence and description of a new taxa (Serpentes: Dipsadidae:
Xenodontini)

Hussam Zaher^{1,*}, Ana L.C. Prudente²

1 - Museu de Zoologia da Universidade de São Paulo, Avenida Nazaré 481, Ipiranga, São Paulo, CEP
04263-000, São Paulo, Brazil

2 - Museu Paraense Emílio Goeldi, Laboratório de Herpetologia, Avenida Perimetral 1901, CP 399, CEP
66040-170, Belém, Pará, Brazil

*Corresponding author; e-mail: hussam.zaher@gmail.com

Supplementary material

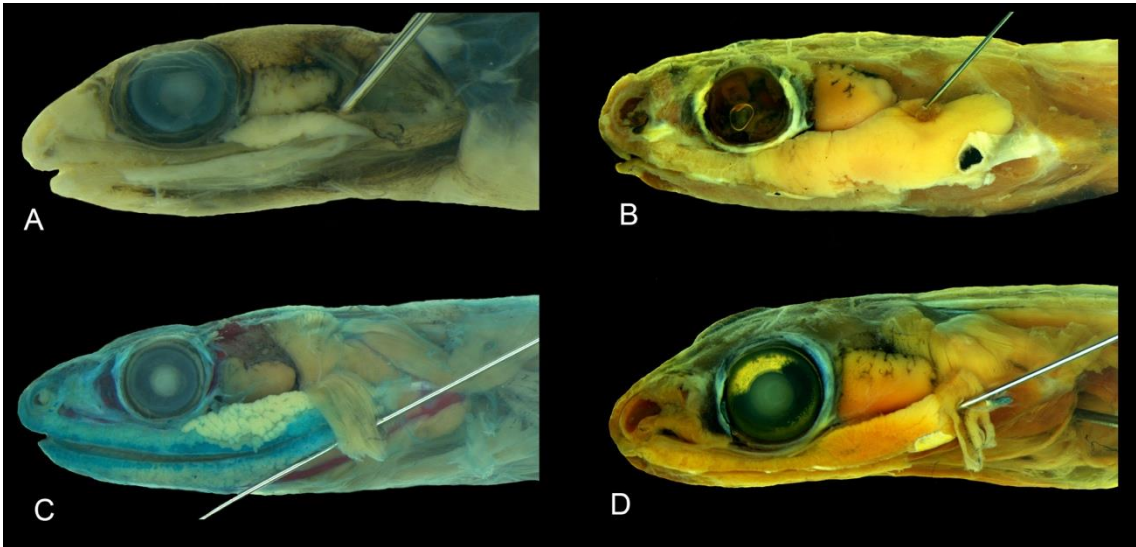


Figure S1. Head glands of *Eutrachelophis papilio* sp. nov. (MPEG 19550) (A), *Erythrolamprus aesculapii* (MPEG 26329) (B), *Lygophis lineatus* (MPEG – TCAP 332) (C), and *Erythrolamprus typhlus* (MPEG 22334) (D) in lateral view.

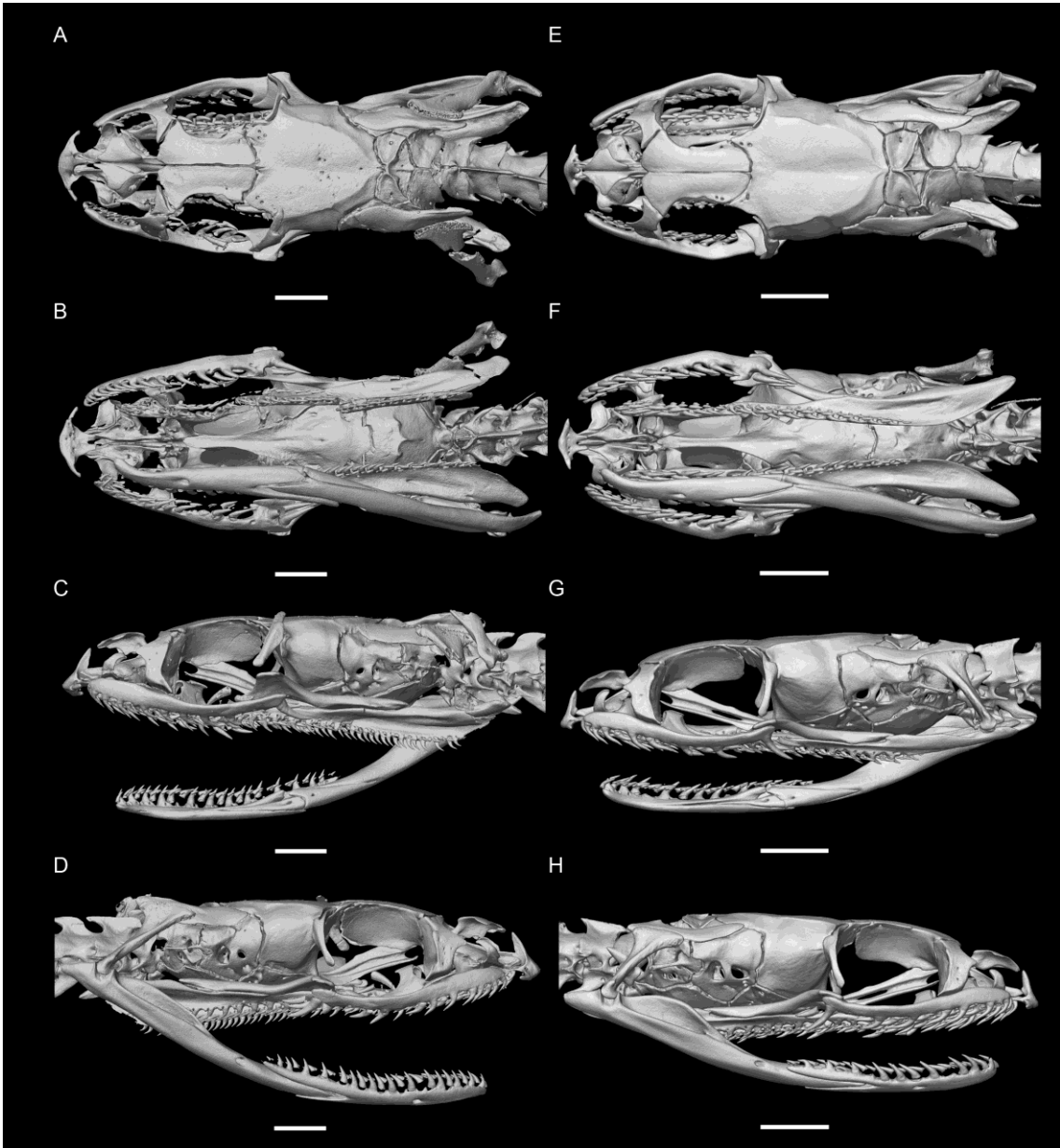


Figure S2. Skulls of *Lygophis dilepis* (MZUSP 7127) (A-D), and *L. lineatus* (MZUSP 20502) (E-H). Scale bar = 2 mm.

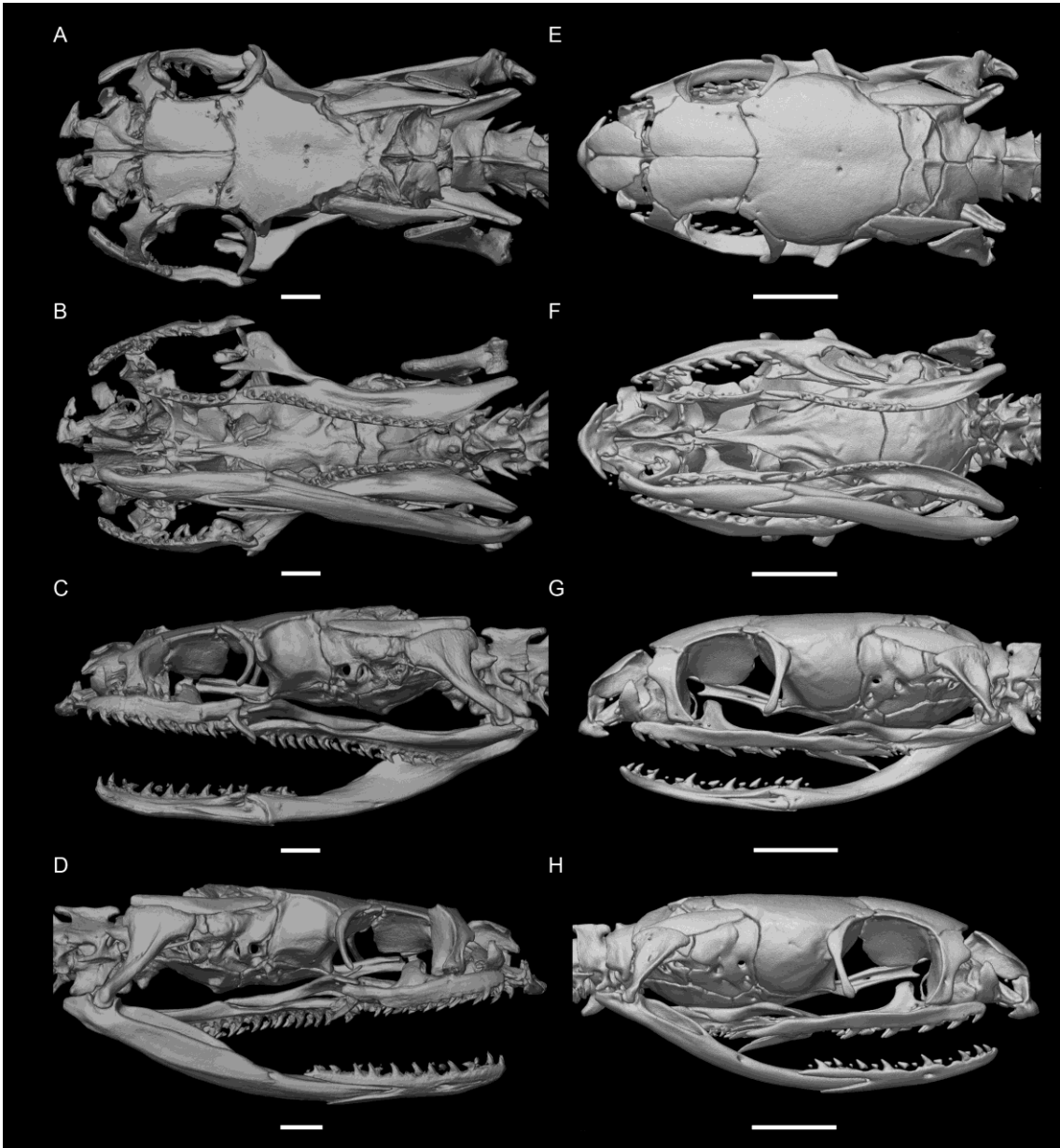


Figure S3. Skulls of *Erythrolamprus aesculapii* (MZUSP 22848) (A-D), and *E. pyburni* (AMNH 143811) (E-H). Scale bar = 2 mm.

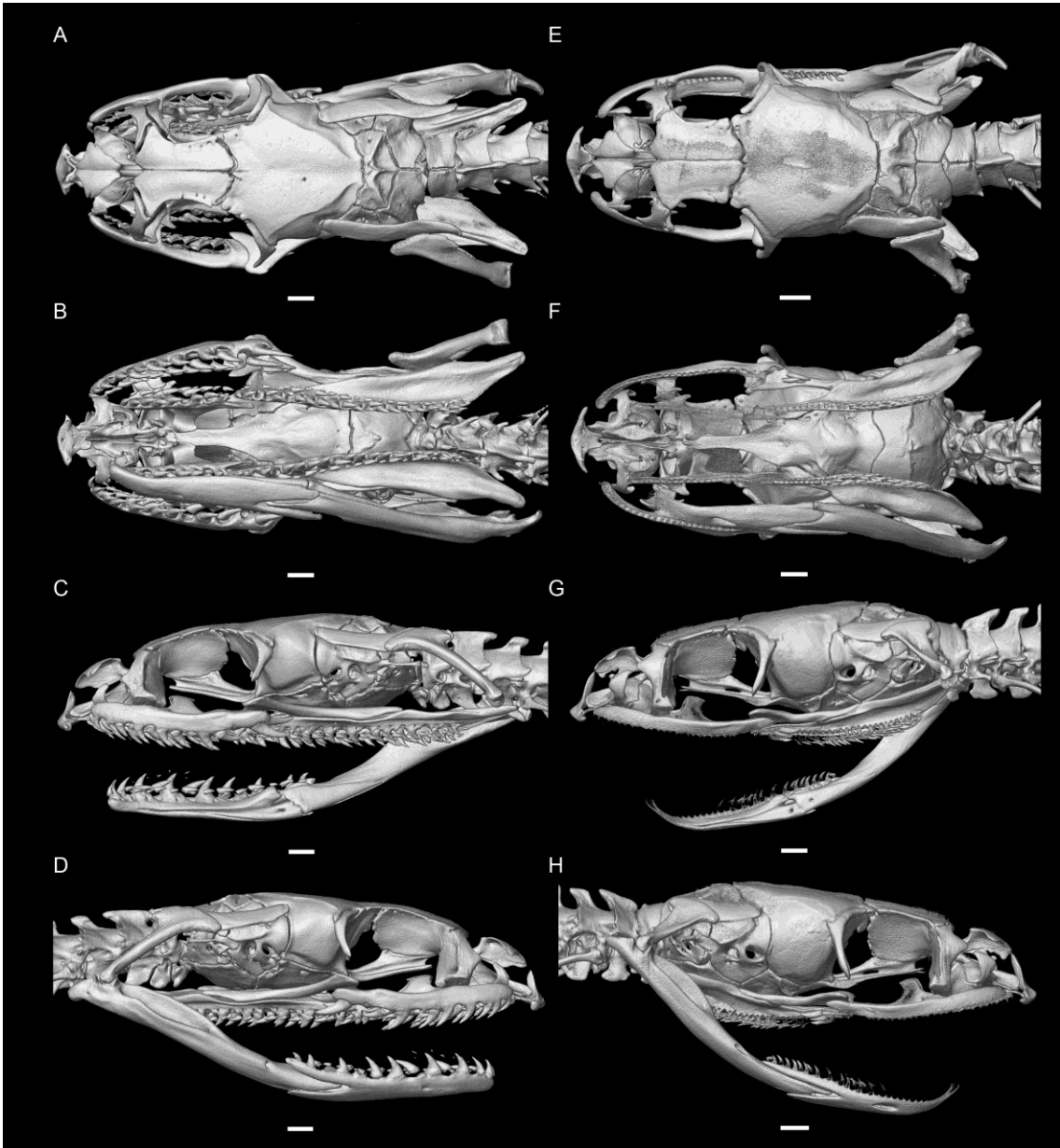


Figure S4. Skulls of *Erythrolamprus anomalus* (MZUSP 7464) (A-D), and *E. atraventer* (MZUSP 4912) (E-H). Scale bar = 1 mm.

Table S1. Variation in *Eutrachelophis papilio*. Legends: M: male; F: female; VE: number of ventrals; SC: subcaudals; SVL: snout-vent length; TL: tail length; HL: head length; FL: frontal length; FW: frontal width; PL: parietal length; PW: parietal width; PFL: prefrontal length; PFW: prefrontal width; InL: internasal length; InW: internasal width; OD: ocular diameter; LH: loreal height; LL: loreal length; ACL: anterior chinshield length; PCL: posterior chinshield length; RH: rostral height; RL: rostral length.

	MPEG	MPEG	MPEG	MPEG	MZUSP
	25471	18250	19550	23862	10530
Sex	M	F	M	F	F
Sexually	Mature	Immature	Immature	Mature	Mature
VE	145	139	144	–	141
SC	28+n	71	76	–	68
Maxilar teeth	25+2	25+2	22+2	–	22+2
SVL	266	128	102	295	235
TL	49+n	45	35	107	92
HL	11.17	8.73	7.4	–	12.3
FL	3.34	2.82	2.58	–	2.88
FW	2.01	1.69	1.43	–	1.74
PL	4.4	3.44	3.15	–	4.12
PW	2.52	1.95	1.75	–	2.69
PFL	1.5	0.92	0.97	–	1.10
PFW	1.63	1.3	1.27	–	1.45
InL	1.46	0.73	0.78	–	0.73
InW	1.42	0.96	0.78	–	1.10

Od	2.54	1.99	1.76	–	2.18
LH	1.12	0.72	0.64	–	1.21
LL	0.74	0.57	0.44	–	0.68
ACL	2.46	1.93	1.93	–	2.1
PCL	3.09	2.35	2.26	–	2.80
RH	1.31	1.15	0.84	–	1.12
RL	2.51	1.7	1.6	–	1.90
