

**Comparative mitochondrial phylogeography of two legless lizards (Pygopodidae) from
Queensland's fragmented woodlands**

Jessica Worthington Wilmer^a, Andrew P. Amey^a, Carmel McDougall^b, Melanie Venz^c, Stephen Peck^c and
Paul M. Oliver^{a,d}

^a*Biodiversity and Geosciences Program, Queensland Museum, South Brisbane, Queensland 4101, Australia*

^b*Australian Rivers Institute, Griffith University, 170 Kessels Rd, Brisbane, Queensland 4121, Australia*

^c*Department of Environment and Science, Information Technology, Innovation and the Arts, Brisbane, Queensland, Australia*

^d*Environmental Futures Research Institute, Griffith University, 170 Kessels Rd, Brisbane, Queensland 4121, Australia*

*Corresponding author. E-mail: p.oliver@griffith.edu.au

Supplementary material

Table S1. GenBank accession numbers for ND2 sequences of additional pygopods used in analyses.

Species	Genbank	Species	Genbank
<i>Aprasia aurita</i>	AY134572	<i>Delma torquata</i> (Dt6)	MN999505
<i>Aprasia repens</i>	AY134579	<i>Delma torquata</i> (Dt7)	MN999506
<i>Aprasia striolata</i>	AY134581	<i>Delma torquata</i> (Dt8)	MN999507
<i>Delma australis</i>	KP851416	<i>Delma torquata</i> (Dt9)	MN999508
<i>Delma australis</i>	KP851417	<i>Delma torquata</i> (Dt10)	MN999509
<i>Delma australis</i>	KP851418	<i>Delma torquata</i> (Dt11)	MN999510
<i>Delma australis</i>	KP851419	<i>Delma torquata</i> (Dt12)	MN999511
<i>Delma australis</i>	KP851420	<i>Delma torquata</i> (Dt13)	AY134598
<i>Delma australis</i>	KP851421	<i>Lialis burtonis</i>	AY134599
<i>Delma australis</i>	KP851422	<i>Lialis jicari</i>	AY134600
<i>Delma australis</i>	KP851423	<i>Opdiocephalus taeniatus</i>	AY134601
<i>Delma australis</i>	KP851424	<i>Paradelma orientalis</i> (Po1)	MN999513
<i>Delma australis</i>	KP851425	<i>Paradelma orientalis</i> (Po2)	MN999514
<i>Delma borea</i>	AY134583	<i>Paradelma orientalis</i> (Po3)	MN999515
<i>Delma butleri</i>	AY134584	<i>Paradelma orientalis</i> (Po4)	MN999516
<i>Delma concinna</i>	AY134586	<i>Paradelma orientalis</i> (Po5)	MN999517
<i>Delma fraseri</i>	AY134587	<i>Paradelma orientalis</i> (Po6)	MN999518
<i>Delma grayii</i>	AY134588	<i>Paradelma orientalis</i> (Po7)	MN999519
<i>Delma haroldi</i>	AY13485	<i>Paradelma orientalis</i> (Po8)	MN999520
<i>Delma hebesa</i>	KP851411	<i>Paradelma orientalis</i> (Po9)	MN999521
<i>Delma hebesa</i>	KP851412	<i>Paradelma orientalis</i> (Po10)	MN999522
<i>Delma hebesa</i>	KP851413	<i>Paradelma orientalis</i> (Po11)	MN999523
<i>Delma hebesa</i>	KP851414	<i>Paradelma orientalis</i> (Po12)	MN999524
<i>Delma hebesa</i>	KP851415	<i>Paradelma orientalis</i> (Po13)	MN999525
<i>Delma impar</i>	AY134589	<i>Paradelma orientalis</i> (Po14)	MN999526
<i>Delma inornata</i>	AY134590	<i>Paradelma orientalis</i> (Po15)	MN999527
<i>Delma labialis</i>	AY134591	<i>Paradelma orientalis</i> (Po16)	MN999528
<i>Delma mollerii</i>	AY134593	<i>Paradelma orientalis</i> (Po17)	MN999529
<i>Delma petersoni</i>	AY134593	<i>Paradelma orientalis</i> (Po18)	AY134605
<i>Delma plebeia</i>	KT803571	<i>Pletholax gracilis</i>	AY134602
<i>Delma tincta</i>	AY134597	<i>Pygopus lepidopodus</i>	AY134603
<i>Delma torquata</i> (Dt1)	MN999500	<i>Pygopus lepidopodus</i>	MN999530
<i>Delma torquata</i> (Dt2)	MN999501	<i>Pygopus nigriceps</i>	AY134604
<i>Delma torquata</i> (Dt3)	MN999502	<i>Pygopus robertsi</i>	MN999531
<i>Delma torquata</i> (Dt4)	MN999503	<i>Pygopus schraderi</i>	FJ403393
<i>Delma torquata</i> (Dt5)	MN999504	<i>Pygopus steelescotti</i>	MN999532

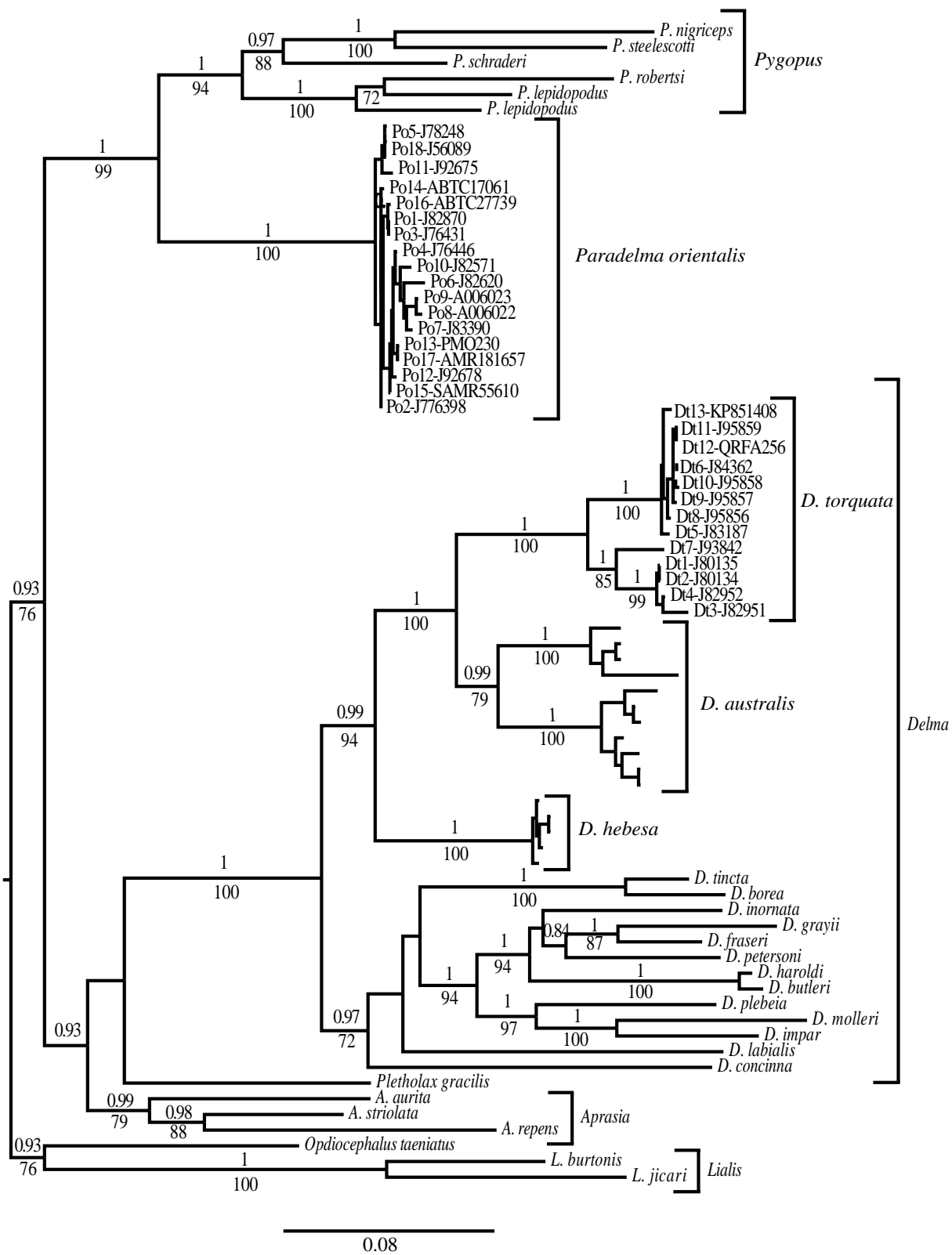


Figure S1. Maximum clade credibility Bayesian tree of all species of Pygopodidae including study target taxa. Clade support is indicated by posterior probabilities ≥ 0.95 above the branch and bootstrap values ≥ 70 representing a topologically identical best maximum likelihood tree are below the branch. Scale represents average number of substitutions per site.