

Amphibia-Reptilia

Phenology and temperature are the main drivers shaping the detection
probability of the common wall lizard

Mattia Falaschi

Department of Environmental Science and Policy, Università degli Studi di Milano, Via Celoria 10, 20133 Milano, Italy

E-mail: matt_fala@hotmail.it

Supplementary material

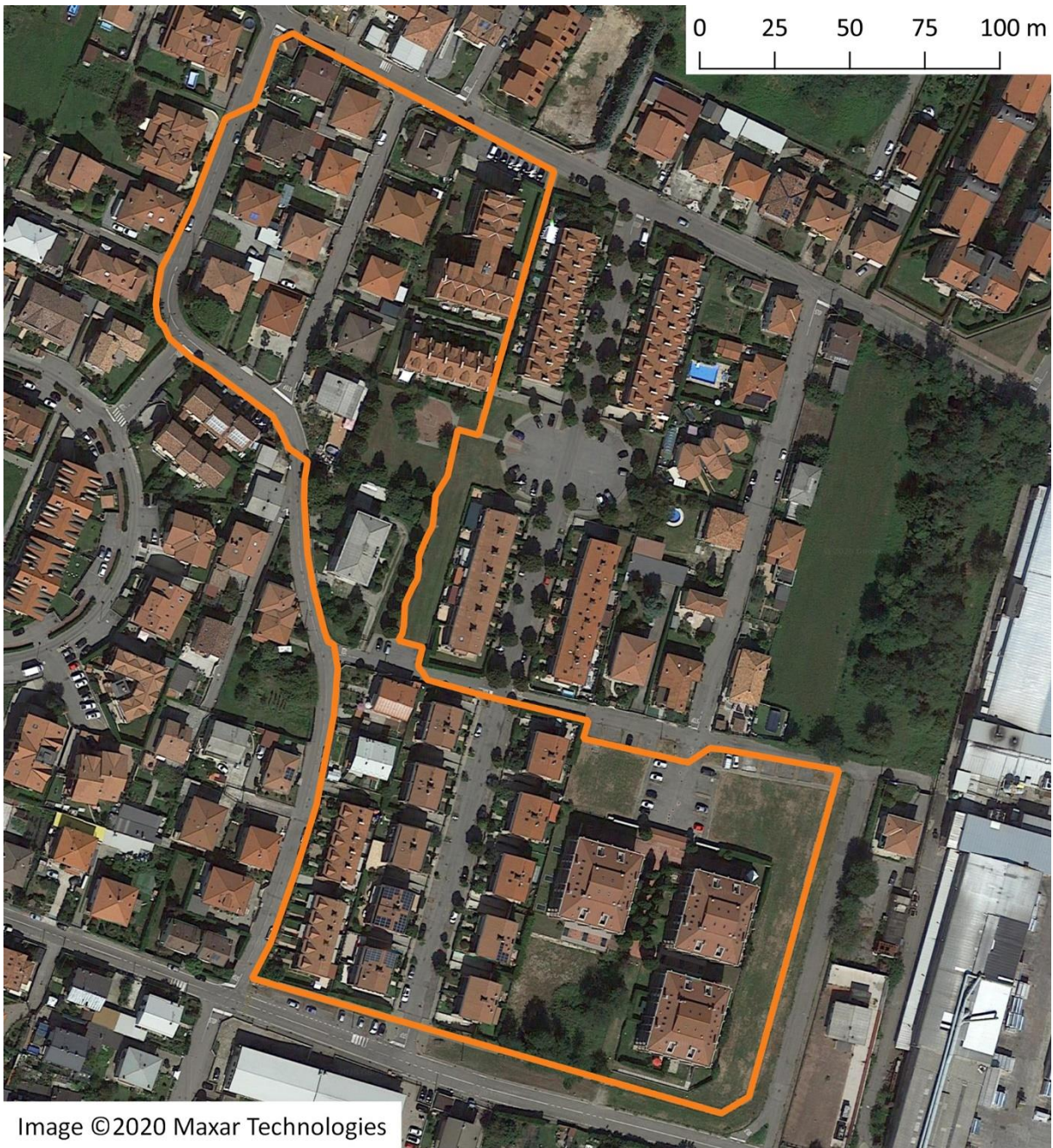


Figure S1. Map of the study area with indication of the path repeatedly walked to count lizards.

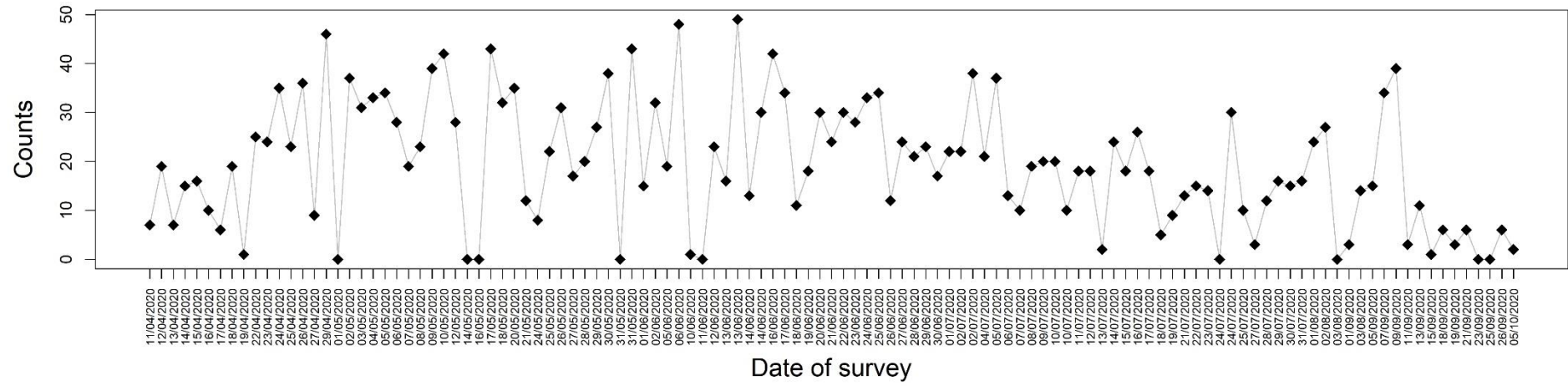


Figure S2. Lizard counts over the 117 surveys.

Table S1. Pairwise correlation coefficients among the survey-specific independent variables used in the model relating detection probability to environmental covariates.

	Julian Day	Temperature	Humidity	Wind	Rain	Rain24
Julian Day	1	0.149	0.561	-0.162	0.161	0.188
Temperature	0.149	1	-0.344	0.036	-0.231	-0.350
Humidity	0.561	-0.344	1	-0.287	0.234	0.498
Wind	-0.162	0.036	-0.287	1	0.244	-0.148
Rain	0.161	-0.231	0.234	0.244	1	0.226
Rain24	0.188	-0.350	0.498	-0.148	0.226	1