

Seven at one blow: The origin of major lineages of the viviparous Lycian salamanders (*Lyciasalamandra* Veith and Steinfartz, 2004) was triggered by a single paleo-historic event

Michael Veith¹, Bayram Göçmen², Konstantinos Sotiropoulos³, Sarah Kieren¹, Olaf Godmann⁴, Sebastian Steinfartz⁵

1 - Department of Biogeography, Trier University, Universitätsring 15, 54296 Trier, Germany

2- Ege University, Faculty of Science, Department of Biology, Zoology Section, 35100 Bornova, İzmir, Turkey

3 - Department of Biological Applications & Technologies, University of Ioannina, 45110 Ioannina, Greece

4 - Hauptstraße 33, 65527 Niedernhausen, Germany

5- Zoological Institute, Technische Universität Braunschweig, Mendelssohnstraße 4, 38106 Braunschweig, Germany

Supplementary Material

Table S1. Samples analyzed for fragments of five mitochondrial and three nuclear genes; ¹ mitochondrial genes only; ² nuclear genes only; ³ added from GenBank.

Taxon	Locality	12S	16S to tRNA _{Tyr}	ATP6/ATP8	Rag-1	TTN	KIAA
<i>Lyciasalamandra a. antalyana</i>	Hurma Köyü	KY348385	KY342278	KY348403	KY342292	KY342304	KY342315
<i>Lyciasalamandra a. gocmeni</i>	Yağca Köyü	KY348386	KY342279	KY348404			
<i>Lyciasalamandra arikani</i>	Erentepe ¹ /Adrasan ²	KY348381	KY342274	KY348399	KY342293	KY342305	KY342316
<i>Lyciasalamandra atifi</i>	Gürçam ¹ /Ciglik ² ,both Gazipasa	KY348387	KY342280	KY348405	KY342294	KY342306	KY342317
<i>Lyciasalamandra atifi</i>	Selge	KY348388	KY342281	KY348406			
<i>Lyciasalamandra atifi</i>	Fersin	KY348389	KY342282	KY348407			
<i>Lyciasalamandra billae</i>	Kale Tepe	KY348382	KY342275	KY348400	KY342296	KY342308	KY342319
<i>Lyciasalamandra fazilae</i>	Cöymen	KY348390	KY342283	KY348408	KY342297	KY342309	KY342320
<i>Lyciasalamandra fazilae</i>	Sarsila	KY348391	KY342284	KY348409			
<i>Lyciasalamandra f. ilgazi</i>	Kötekli	KY348393	KY342286	KY348411			
<i>Lyciasalamandra f. flavimembris</i>	Marmaris	KY348392	KY342285	KY348410	KY342299	KY342311	KY342322
<i>Lyciasalamandra helverseni</i>	Aghios Haralambos Skafos, Kasos island	KY348395	KY342288	KY348413			
<i>Lyciasalamandra helverseni</i>	Pigadia, Karpathos island	KY348394	KY342287	KY348412	KY342300	KY342312	KY342323
<i>Lyciasalamandra irfani</i>	Göynük Canyon	KY348383	KY342276	KY348401	KY342301	#####	KY342324
<i>Lyciasalamandra l. luschani</i>	Dodurga ¹ /Karadere ²	KY348398	KY342291	KY348416	KY342302	KY342313	
<i>Lyciasalamandra l. basoglui</i>	Bayındır	KY348396	KY342289	KY348414	KY342295	KY342307	KY342318
<i>Lyciasalamandra l. finikensis</i>	Belören	KY348397	KY342290	KY348415	KY342298	KY342310	KY342321
<i>Lyciasalamandra yehudahi</i>	Tekirova ¹ /Gedelme ²	KY348384	KY342277	KY348402	KY342303	KY342314	KY342325
<i>Salamandra salamandra</i> ³		EU880331	EU880331	EU880331	KC165600	KF645452	
<i>Chioglossa lusitanica</i> ³		EU880308	EU880308	EU880308			
<i>Mertensiella caucasica</i> ³		EU880319	EU880319	EU880319			
<i>Pleurodeles poireti</i> ³		EU880329	EU880329	EU880329			
<i>Pleurodeles waltl</i> ³		EU880330	EU880330	EU880330			
<i>Euproctus montanus</i> ³		EU880316	EU880316	EU880316			
<i>Euproctus platycephalus</i> ³		EU880317	EU880317	EU880317			

Table S2. Results of Tajima's rate test on mitochondrial sequences for all taxa combinations of one *Pleurodeles* and *Euproctus* species, with *Chioglossa lusitanica* as outgroup; the null hypothesis of equal rates between lineages can be rejected with $P < 0.05$.

Taxa combination	P	Null Hypothesis
<i>E. montanus</i> – <i>P. poireti</i>	0.35	not rejected
<i>E. montanus</i> – <i>P. waltl</i>	0.54	not rejected
<i>E. platycephalus</i> – <i>P. poireti</i>	0.43	not rejected
<i>E. platycephalus</i> – <i>P. waltl</i>	0.81	not rejected

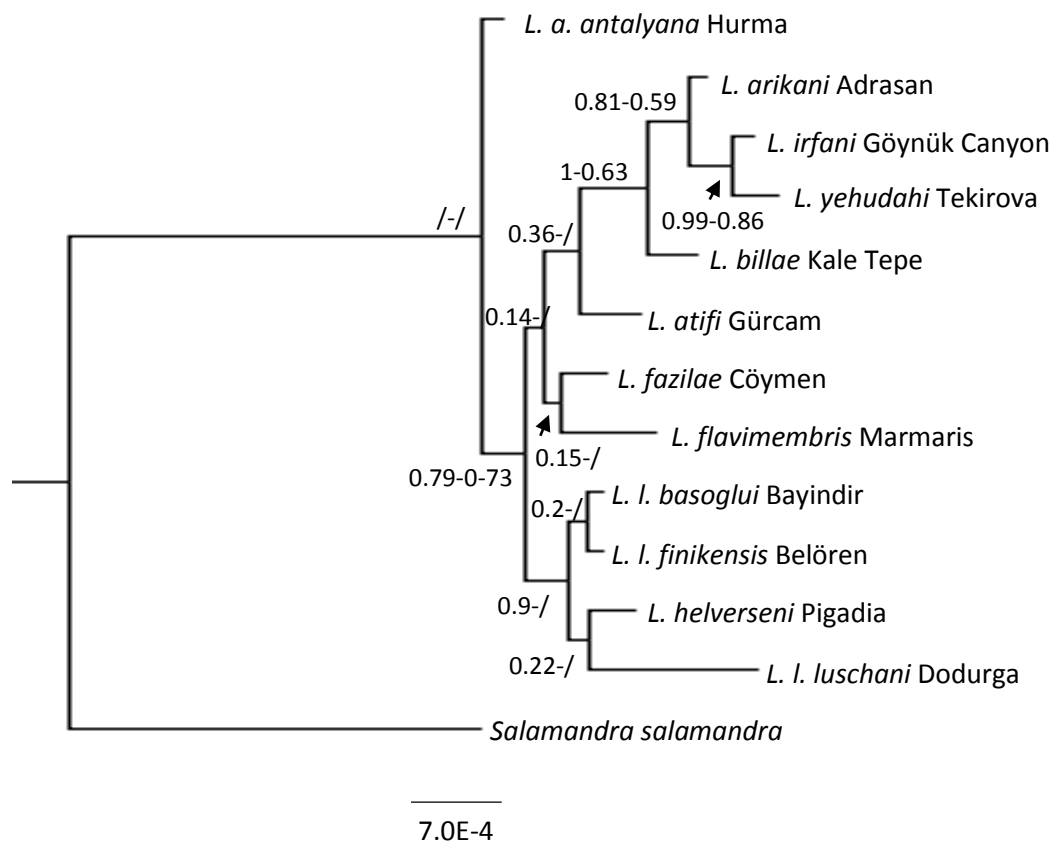


Figure S1. Bayesian inference tree of three nuclear genes (ca. 3,000 bp) based on the results of Partition Finder; numbers at nodes indicate node support values: Bayesian posterior probability – ML bootstrap value; / = no sufficient node support for this topology.

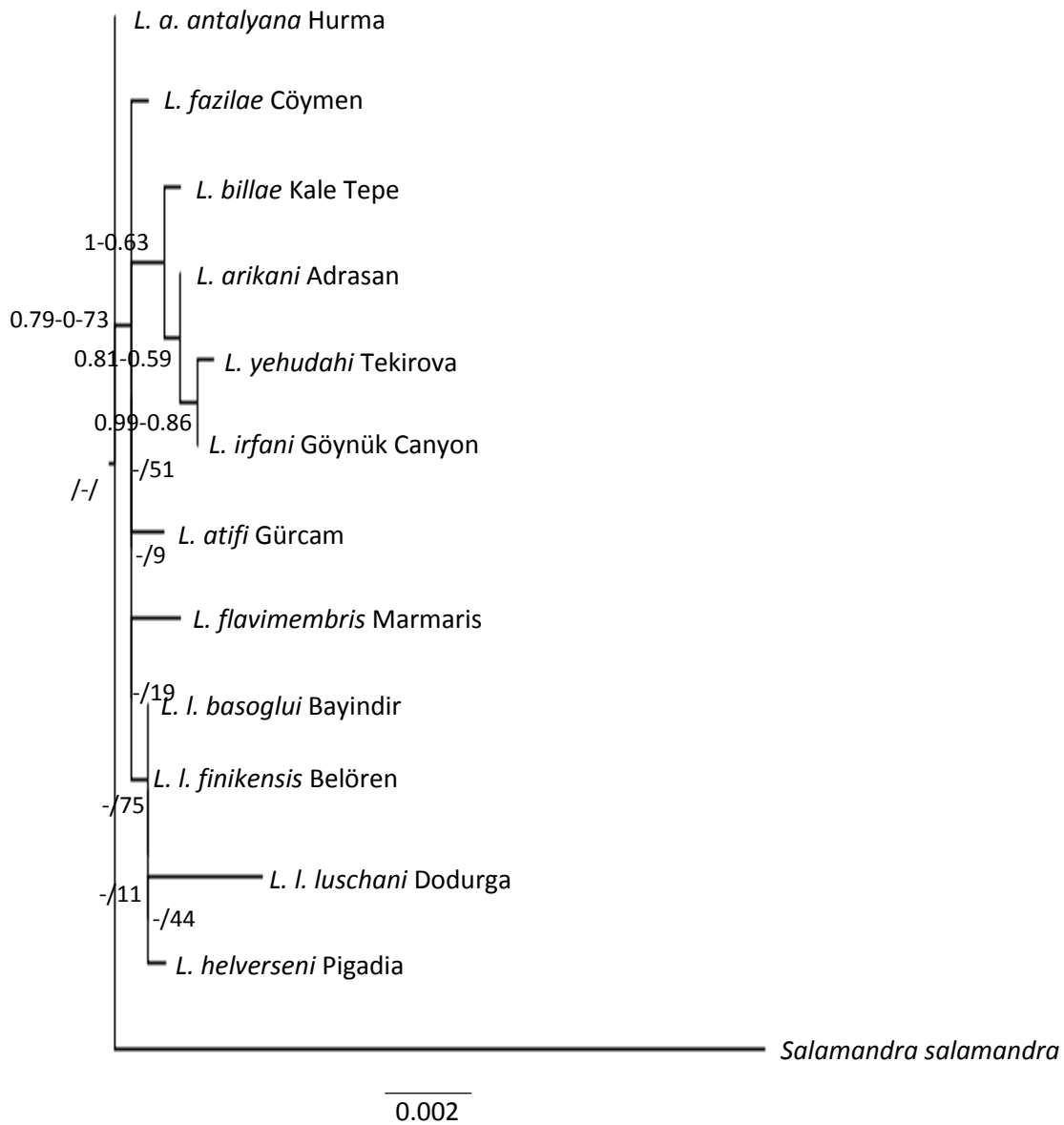


Figure S2. Maximum Likelihood tree of three nuclear genes (ca. 3,000 bp) based on the results of Partition Finder; numbers at nodes indicate node support values: Bayesian posterior probability – ML bootstrap value; / = no sufficient node support for this topology.