

Uncovering environmental, land-use and fire effects on the distribution of
a low-dispersal species, the Hermann's tortoise *Testudo hermanni*

Arnaud Badiane¹, Cátia Matos², Xavier Santos³

¹ Department of Biological Sciences, Macquarie University, Sydney, NSW 2109, Australia

² CEMS, Center for Environmental and Marine Sciences, University of Hull - Scarborough Campus, Filey Road,
Scarborough, North Yorkshire YO11 3AZ, UK

³ CIBIO/InBio, Centro de Investigação em Biodiversidade e Recursos Genéticos da Universidade do Porto, Instituto de
Ciências Agrárias de Vairão, R. Padre Armando Quintas, 4485-661 Vairão, Portugal

Supplementary Figures

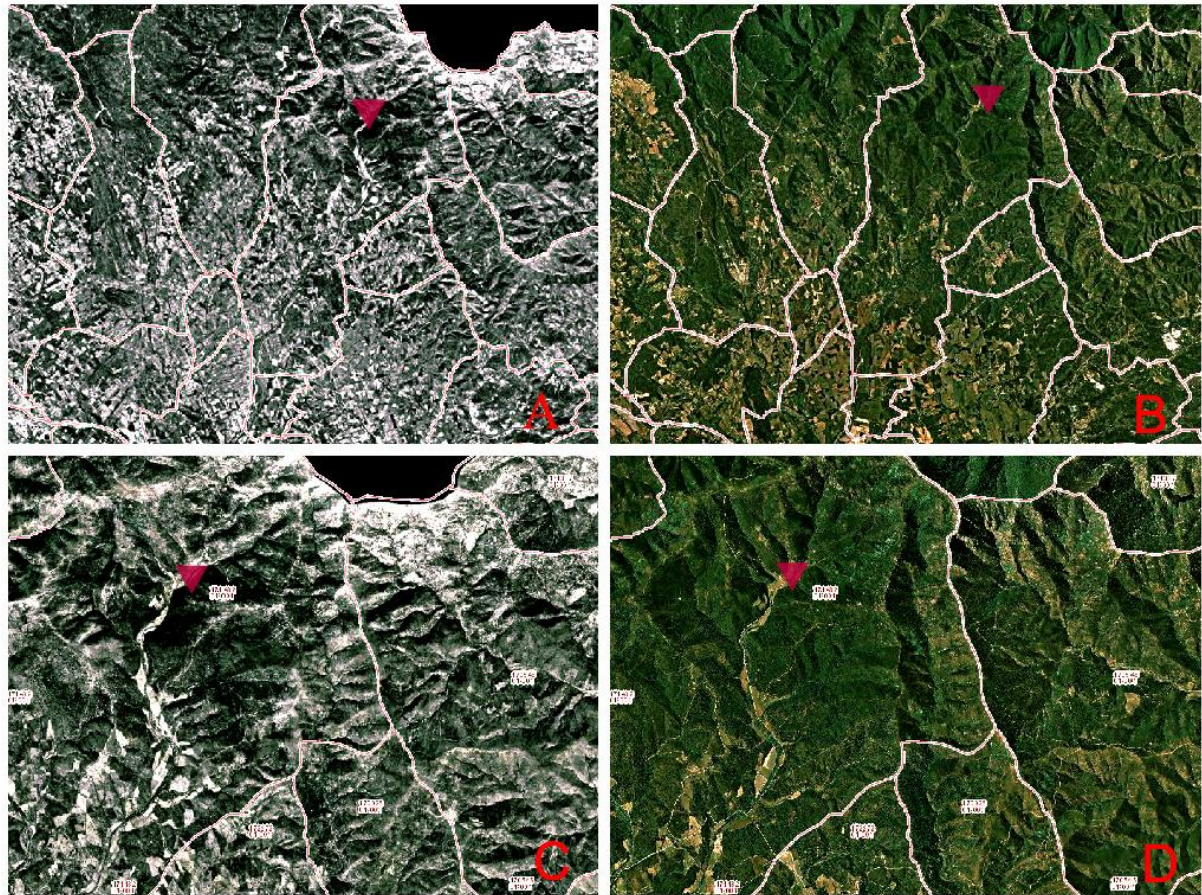


Figure S1. Aerial photos of the Albera region showing differences in land use between 1956 and 2012. General view of the Albera region in 1956 (A) and 2012 (B), and detail of the location of the Monastery in 1956 (C) and 2012 (D). Red triangles pinpoint the location of the the Sant Quirce de Colera Monastery. Agriculture fields can be observed in the photos, with the highest extension in 1956, except around the monastery.

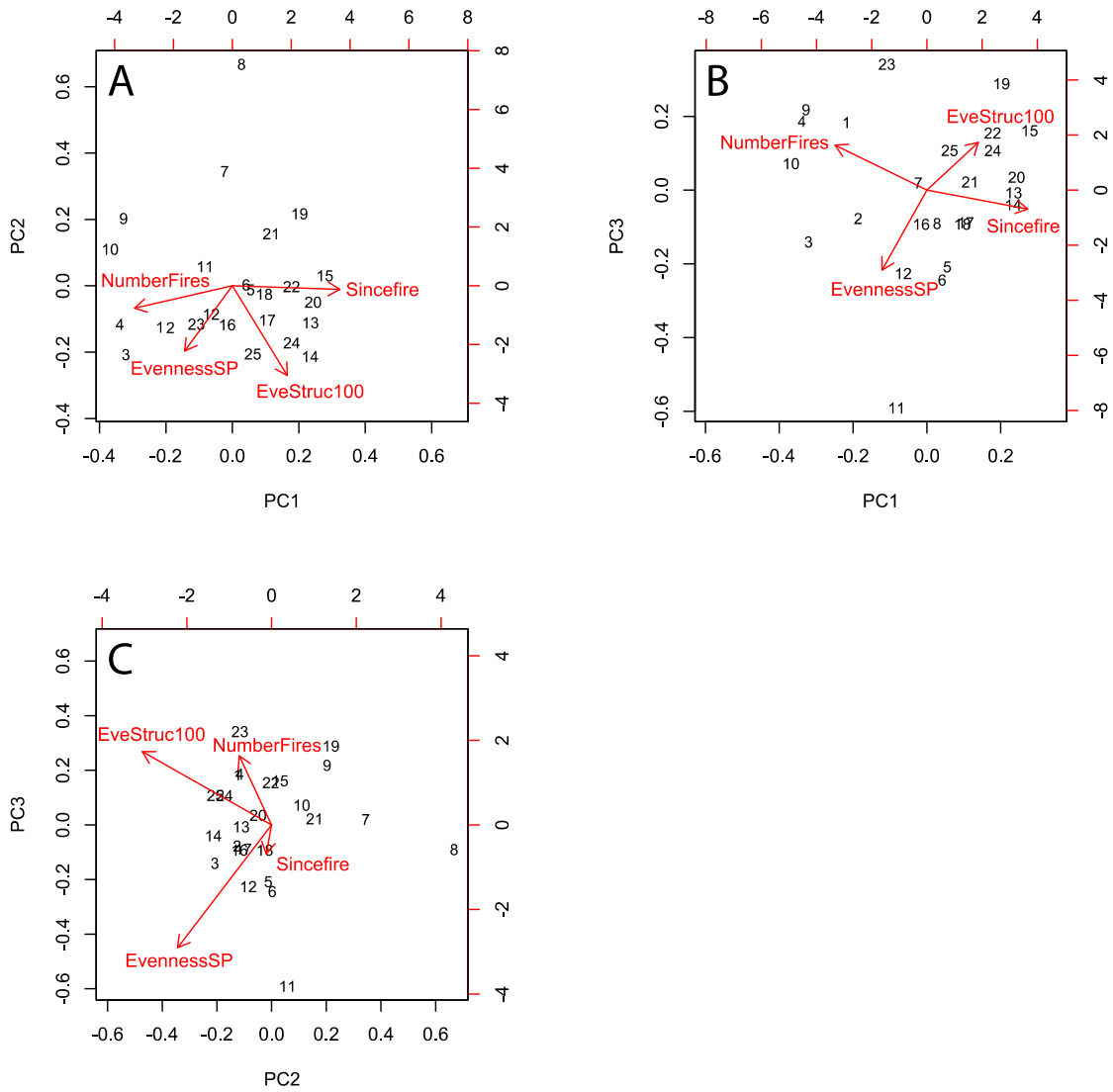


Figure S2. Results of the principal components analysis (PCA) resuming the variables number of fires (NumberFires), time since last fire (Sincefire), evenness of plant composition (EvennessSP), and evenness in vegetation height (EveStruc100). Plot (A) displays PC1 as a function of PC2, plot (B) shows PC1 as a function of PC3, and plot (C) represents PC2 as a function of PC3.