

BOLD TaxonID Tree

Title : Merged Project
Date : 20-October-2015
Data Type : Nucleotide
Distance Model : Kimura 2 Parameter
Marker : COI-5P
Codon Positions : 1st, 2nd, 3rd
Labels : Country & Province, ProcessID, Catalog Number, Family, BIN uri
Filters : Length > 200
Colorization : [blue]=Stop Codons [red]=Contamination or misidentification

Sequence Count : 1046

Species count : 159

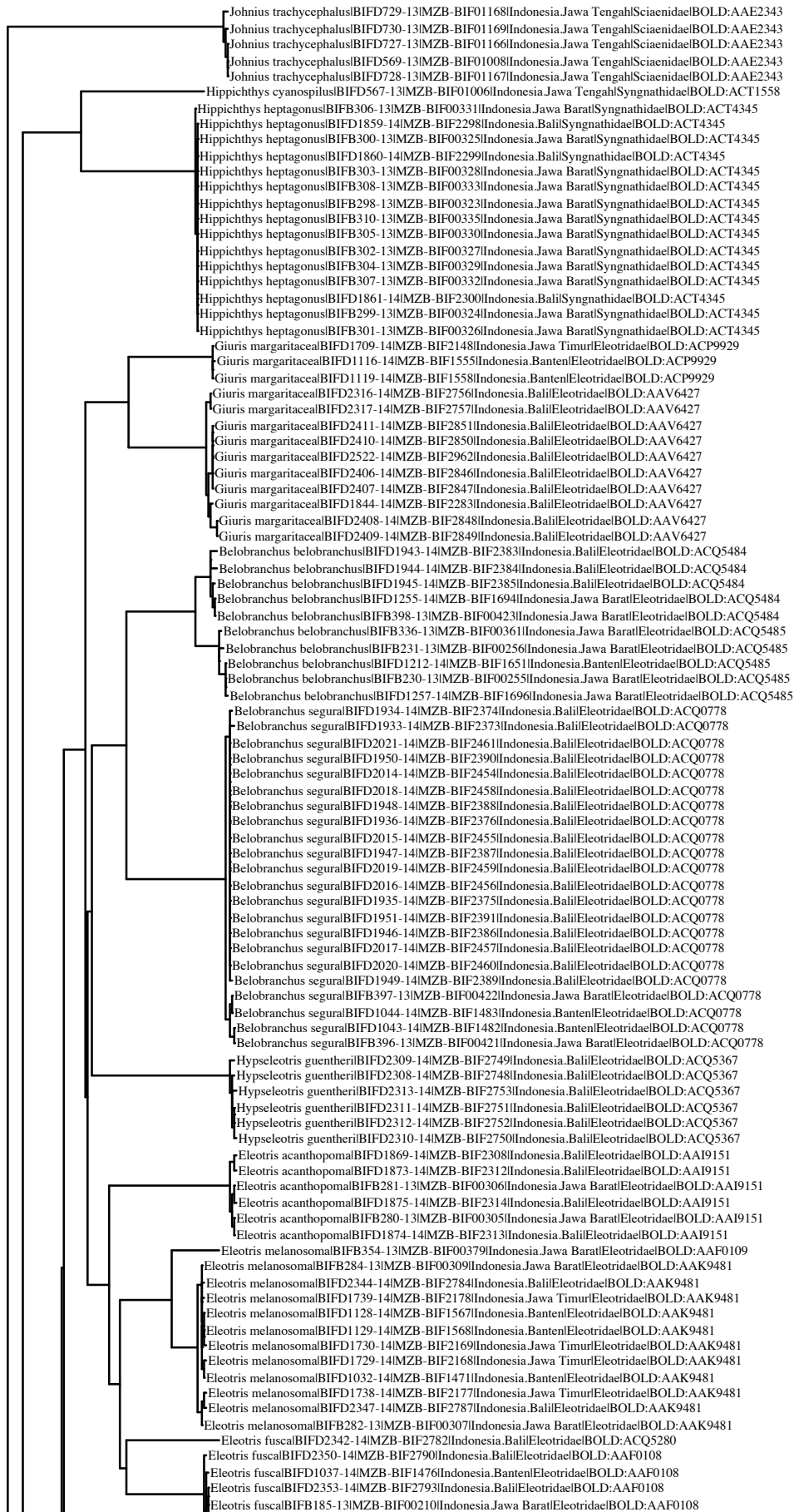
Genus count : 107

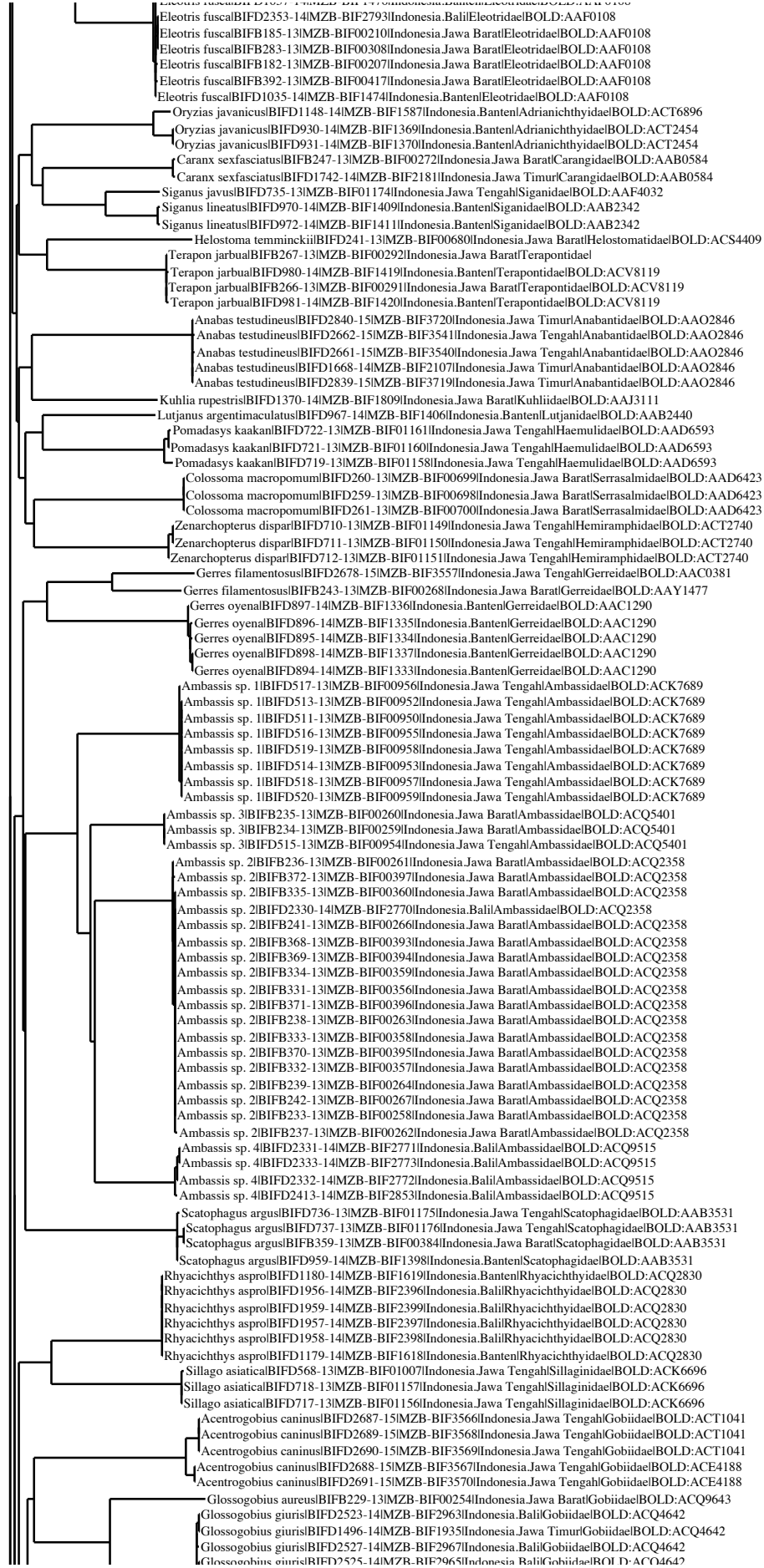
Family count : 50

Unidentified : 0

BIN Count : 186

10 %



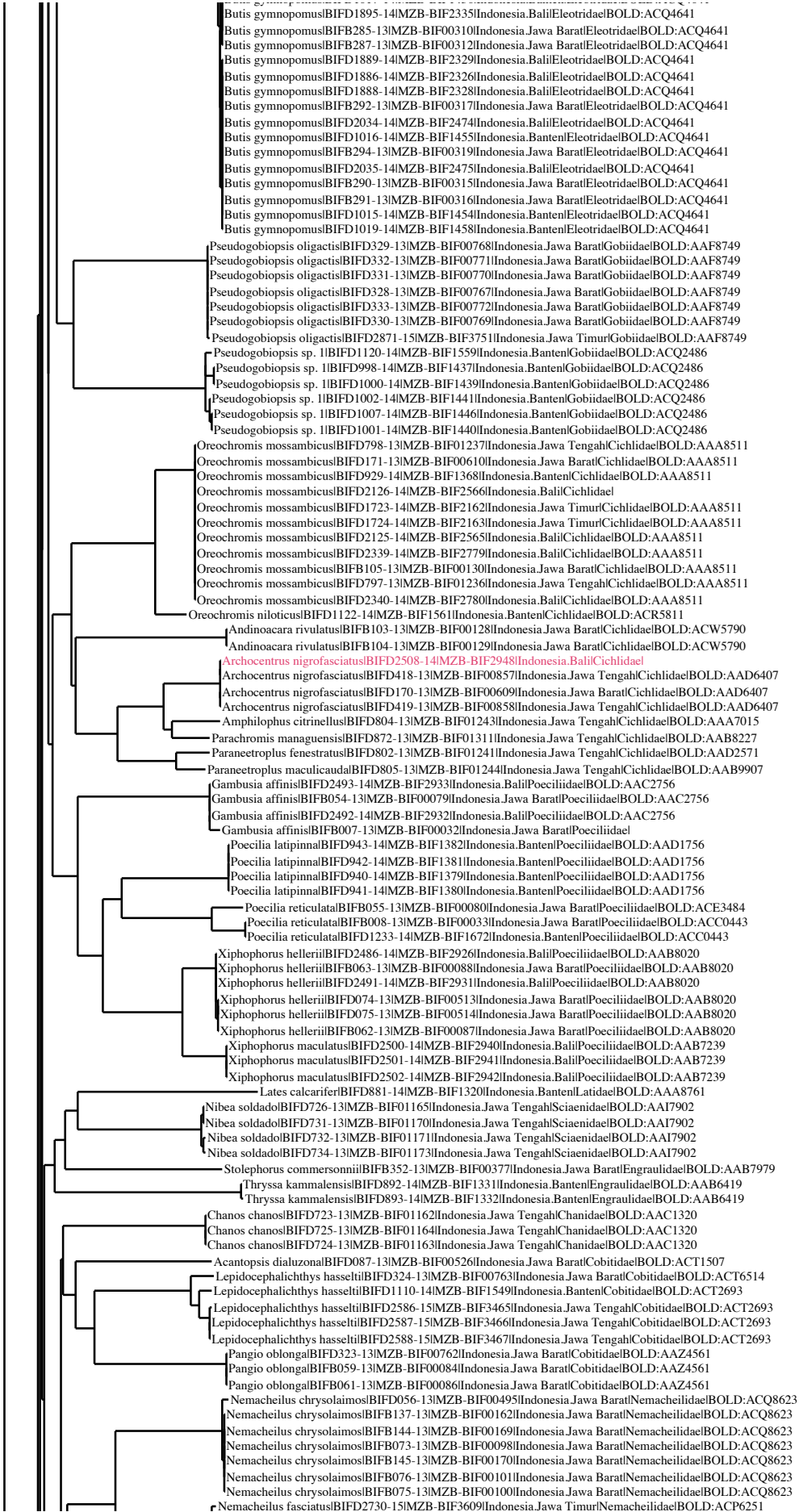


Glossogobius giuris|BIFD1496-14|MZB-BIF1935|Indonesia.Jawa Timur|Gobiidae|BOLD:ACQ4642
 Glossogobius giuris|BIFD2527-14|MZB-BIF2967|Indonesia.Bali|Gobiidae|BOLD:ACQ4642
 Glossogobius giuris|BIFD2525-14|MZB-BIF2965|Indonesia.Bali|Gobiidae|BOLD:ACQ4642
 Glossogobius giuris|BIFD1265-14|MZB-BIF1704|Indonesia.Jawa Barat|Gobiidae|BOLD:ACQ4642
 Glossogobius giuris|BIFD1027-14|MZB-BIF1466|Indonesia.Banten|Gobiidae|BOLD:ACQ4642
 Glossogobius giuris|BIFD1026-14|MZB-BIF1465|Indonesia.Banten|Gobiidae|BOLD:ACQ4642
 Glossogobius giuris|BIFD1495-14|MZB-BIF1934|Indonesia.Jawa Timur|Gobiidae|BOLD:ACQ4642
 Glossogobius giuris|BIFD1497-14|MZB-BIF1936|Indonesia.Jawa Timur|Gobiidae|BOLD:ACQ4642
 Glossogobius giuris|BIFD2524-14|MZB-BIF2964|Indonesia.Bali|Gobiidae|BOLD:ACQ4642
 Glossogobius giuris|BIFD1025-14|MZB-BIF1464|Indonesia.Banten|Gobiidae|BOLD:ACQ4642
 Glossogobius giuris|BIFD1268-14|MZB-BIF1707|Indonesia.Jawa Barat|Gobiidae|BOLD:ACQ4642
 Glossogobius giuris|BIFD1266-14|MZB-BIF1705|Indonesia.Jawa Barat|Gobiidae|BOLD:ACQ4642
 Glossogobius giuris|BIFD1023-14|MZB-BIF1462|Indonesia.Banten|Gobiidae|BOLD:ACQ4642
 Glossogobius giuris|BIFD1885-14|MZB-BIF2325|Indonesia.Bali|Gobiidae|BOLD:ACQ4642
 Chelonodon patocal|BIFD983-14|MZB-BIF1422|Indonesia.Banten|Tetraodontidae|BOLD:AAF2666
 Chelonodon patocal|BIFD2038-14|MZB-BIF2478|Indonesia.Bali|Tetraodontidae|BOLD:AAF2666
 Chelonodon patocal|BIFD2037-14|MZB-BIF2477|Indonesia.Bali|Tetraodontidae|BOLD:AAF2666
 Ophiocara porocephala|BIFB278-13|MZB-BIF00303|Indonesia.Jawa Barat|Eleotridae|BOLD:AAD4080
 Ophiocara porocephala|BIFB279-13|MZB-BIF00304|Indonesia.Jawa Barat|Eleotridae|BOLD:AAD4080
 Pseudogobius javanicus|BIFD919-14|MZB-BIF1358|Indonesia.Banten|Gobiidae|BOLD:AAD9462
 Pseudogobius javanicus|BIFD954-14|MZB-BIF1393|Indonesia.Banten|Gobiidae|BOLD:AAD9462
 Pseudogobius javanicus|BIFD1142-14|MZB-BIF1581|Indonesia.Banten|Gobiidae|BOLD:AAD9462
 Pseudogobius javanicus|BIFD953-14|MZB-BIF1392|Indonesia.Banten|Gobiidae|BOLD:AAD9462
 Pseudogobius javanicus|BIFD955-14|MZB-BIF1394|Indonesia.Banten|Gobiidae|BOLD:AAD9462
 Pseudogobius javanicus|BIFD922-14|MZB-BIF1361|Indonesia.Banten|Gobiidae|BOLD:AAD9462
 Pseudogobius javanicus|BIFD923-14|MZB-BIF1362|Indonesia.Banten|Gobiidae|BOLD:AAD9462
 Pseudogobius javanicus|BIFD920-14|MZB-BIF1359|Indonesia.Banten|Gobiidae|BOLD:AAD9462
 Pseudogobius javanicus|BIFD1144-14|MZB-BIF1583|Indonesia.Banten|Gobiidae|BOLD:AAD9462
 Pseudogobius javanicus|BIFD1143-14|MZB-BIF1582|Indonesia.Banten|Gobiidae|BOLD:AAD9462
 Pseudogobius javanicus|BIFD921-14|MZB-BIF1360|Indonesia.Banten|Gobiidae|BOLD:AAD9462
 Toxotes jaculatrix|BIFD877-14|MZB-BIF1316|Indonesia.Banten|Toxotidae|BOLD:AAI0481
 Toxotes jaculatrix|BIFD875-14|MZB-BIF1314|Indonesia.Banten|Toxotidae|BOLD:AAI0481
 Boleophthalmus boddarti|BIFD557-13|MZB-BIF00996|Indonesia.Jawa Tengah|Gobiidae|BOLD:ACU8535
 Boleophthalmus boddarti|BIFD561-13|MZB-BIF01000|Indonesia.Jawa Tengah|Gobiidae|BOLD:ACU8535
 Boleophthalmus boddarti|BIFD560-13|MZB-BIF00999|Indonesia.Jawa Tengah|Gobiidae|BOLD:ACU8535
 Boleophthalmus boddarti|BIFD555-13|MZB-BIF00994|Indonesia.Jawa Tengah|Gobiidae|BOLD:ACU8535
 Boleophthalmus boddarti|BIFD562-13|MZB-BIF01001|Indonesia.Jawa Tengah|Gobiidae|BOLD:ACU8535
 Boleophthalmus boddarti|BIFD559-13|MZB-BIF00998|Indonesia.Jawa Tengah|Gobiidae|BOLD:ACU8535
 Boleophthalmus boddarti|BIFD558-13|MZB-BIF00997|Indonesia.Jawa Tengah|Gobiidae|BOLD:ACU8535
 Boleophthalmus boddarti|BIFD556-13|MZB-BIF00995|Indonesia.Jawa Tengah|Gobiidae|BOLD:ACU8535
 Sillago chondropus|BIFB244-13|MZB-BIF00269|Indonesia.Jawa Barat|Sillaginidae|BOLD:AAE9665
 Periophthalmus argenteilatus|BIFD2036-14|MZB-BIF2476|Indonesia.Bali|Gobiidae|BOLD:AAI1920
 Periophthalmus argenteilatus|BIFD950-14|MZB-BIF1389|Indonesia.Banten|Gobiidae|BOLD:ACQ9240
 Periophthalmus argenteilatus|BIFD952-14|MZB-BIF1391|Indonesia.Banten|Gobiidae|BOLD:ACQ9240
 Periophthalmus argenteilatus|BIFD951-14|MZB-BIF1390|Indonesia.Banten|Gobiidae|BOLD:ACQ9240
 Periophthalmus kalolol|BIFD564-13|MZB-BIF01003|Indonesia.Jawa Tengah|Gobiidae|BOLD:ACQ7077
 Periophthalmus kalolol|BIFD1506-14|MZB-BIF1945|Indonesia.Jawa Timur|Gobiidae|BOLD:ACQ7077
 Periophthalmus kalolol|BIFD1508-14|MZB-BIF1947|Indonesia.Jawa Timur|Gobiidae|BOLD:ACQ7077
 Periophthalmus kalolol|BIFD554-13|MZB-BIF00993|Indonesia.Jawa Tengah|Gobiidae|BOLD:ACQ7077
 Periophthalmus kalolol|BIFD1509-14|MZB-BIF1948|Indonesia.Jawa Timur|Gobiidae|BOLD:ACQ7077
 Periophthalmus kalolol|BIFD1507-14|MZB-BIF1946|Indonesia.Jawa Timur|Gobiidae|BOLD:ACQ7077
 Periophthalmus kalolol|BIFD1513-14|MZB-BIF1952|Indonesia.Jawa Timur|Gobiidae|BOLD:ACQ7077
 Periophthalmus kalolol|BIFD563-13|MZB-BIF01002|Indonesia.Jawa Tengah|Gobiidae|BOLD:ACQ7077
 Periophthalmus kalolol|BIFD1510-14|MZB-BIF1949|Indonesia.Jawa Timur|Gobiidae|BOLD:ACQ7077
 Periophthalmus novemradiatus|BIFD553-13|MZB-BIF00992|Indonesia.Jawa Tengah|Gobiidae|BOLD:AAI1919
 Periophthalmus novemradiatus|BIFD549-13|MZB-BIF00988|Indonesia.Jawa Tengah|Gobiidae|BOLD:AAI1919
 Periophthalmus novemradiatus|BIFD548-13|MZB-BIF00987|Indonesia.Jawa Tengah|Gobiidae|BOLD:AAI1919
 Periophthalmus novemradiatus|BIFD550-13|MZB-BIF00989|Indonesia.Jawa Tengah|Gobiidae|BOLD:AAI1919
 Periophthalmus novemradiatus|BIFD545-13|MZB-BIF00984|Indonesia.Jawa Tengah|Gobiidae|BOLD:AAI1919
 Periophthalmus novemradiatus|BIFD551-13|MZB-BIF00990|Indonesia.Jawa Tengah|Gobiidae|BOLD:AAI1919
 Periophthalmus novemradiatus|BIFD552-13|MZB-BIF00991|Indonesia.Jawa Tengah|Gobiidae|BOLD:AAI1919
 Periophthalmus novemradiatus|BIFD547-13|MZB-BIF00986|Indonesia.Jawa Tengah|Gobiidae|BOLD:AAI1919
 Periophthalmus novemradiatus|BIFD544-13|MZB-BIF00983|Indonesia.Jawa Tengah|Gobiidae|BOLD:AAI1919
 Periophthalmus novemradiatus|BIFD546-13|MZB-BIF00985|Indonesia.Jawa Tengah|Gobiidae|BOLD:AAI1919
 Stigmatogobius pleurostigma|BIFD1141-14|MZB-BIF1580|Indonesia.Banten|Gobiidae|BOLD:AAJ4401
 Oligolepis acutipennis|BIFD2412-14|MZB-BIF2852|Indonesia.Bali|Gobiidae|BOLD:AAO1654
 Oligolepis acutipennis|BIFD2314-14|MZB-BIF2754|Indonesia.Bali|Gobiidae|BOLD:AAO1654
 Oligolepis acutipennis|BIFD2315-14|MZB-BIF2755|Indonesia.Bali|Gobiidae|BOLD:AAO1654
 Oligolepis acutipennis|BIFB355-13|MZB-BIF00380|Indonesia.Jawa Barat|Gobiidae|BOLD:AAO1654
 Oligolepis acutipennis|BIFB248-13|MZB-BIF00273|Indonesia.Jawa Barat|Gobiidae|BOLD:AAO1654
 Stenogobius blokzeyli|BIFD2365-14|MZB-BIF2805|Indonesia.Bali|Gobiidae|BOLD:AAF8792
 Stenogobius blokzeyli|BIFB208-13|MZB-BIF00233|Indonesia.Jawa Barat|Gobiidae|BOLD:AAF8792
 Stenogobius blokzeyli|BIFB202-13|MZB-BIF00227|Indonesia.Jawa Barat|Gobiidae|BOLD:AAF8792
 Stenogobius blokzeyli|BIFD2366-14|MZB-BIF2806|Indonesia.Bali|Gobiidae|BOLD:AAF8792
 Stenogobius blokzeyli|BIFB207-13|MZB-BIF00232|Indonesia.Jawa Barat|Gobiidae|BOLD:AAF8792
 Stenogobius blokzeyli|BIFD1708-14|MZB-BIF2147|Indonesia.Jawa Timur|Gobiidae|BOLD:AAF8792
 Stenogobius blokzeyli|BIFD2363-14|MZB-BIF2803|Indonesia.Bali|Gobiidae|BOLD:AAF8792
 Stenogobius blokzeyli|BIFD2364-14|MZB-BIF2804|Indonesia.Bali|Gobiidae|BOLD:AAF8792
 Stenogobius blokzeyli|BIFB228-13|MZB-BIF00233|Indonesia.Jawa Barat|Gobiidae|BOLD:AAF8792
 Stenogobius gymnopomus|BIFB206-13|MZB-BIF00231|Indonesia.Jawa Barat|Gobiidae|BOLD:ACQ3060
 Stenogobius gymnopomus|BIFB414-13|MZB-BIF00439|Indonesia.Jawa Barat|Gobiidae|BOLD:ACQ3060
 Awaous grammepomus|BIFD1493-14|MZB-BIF1932|Indonesia.Jawa Timur|Gobiidae|BOLD:AAW3032
 Awaous grammepomus|BIFD1369-14|MZB-BIF1808|Indonesia.Jawa Barat|Gobiidae|BOLD:AAW3032
 Awaous grammepomus|BIFD2419-14|MZB-BIF2859|Indonesia.Bali|Gobiidae|BOLD:AAW3032
 Awaous grammepomus|BIFB389-13|MZB-BIF00414|Indonesia.Jawa Barat|Gobiidae|BOLD:AAW3032
 Awaous grammepomus|BIFD1845-14|MZB-BIF2284|Indonesia.Bali|Gobiidae|BOLD:AAW3032
 Awaous grammepomus|BIFB337-13|MZB-BIF00362|Indonesia.Jawa Barat|Gobiidae|BOLD:AAW3032
 Awaous grammepomus|BIFD1259-14|MZB-BIF1698|Indonesia.Jawa Barat|Gobiidae|BOLD:AAW3032
 Awaous grammepomus|BIFD1494-14|MZB-BIF1933|Indonesia.Jawa Timur|Gobiidae|BOLD:AAW3032
 Awaous grammepomus|BIFB339-13|MZB-BIF00364|Indonesia.Jawa Barat|Gobiidae|BOLD:AAW3032
 Awaous grammepomus|BIFD1846-14|MZB-BIF2285|Indonesia.Bali|Gobiidae|BOLD:AAW3032
 Awaous grammepomus|BIFD1261-14|MZB-BIF1700|Indonesia.Jawa Barat|Gobiidae|BOLD:AAW3032
 Awaous grammepomus|BIFD1492-14|MZB-BIF1931|Indonesia.Jawa Timur|Gobiidae|BOLD:AAW3032
 Awaous grammepomus|BIFD1260-14|MZB-BIF1699|Indonesia.Jawa Barat|Gobiidae|BOLD:AAW3032
 Awaous grammepomus|BIFD1258-14|MZB-BIF1697|Indonesia.Jawa Barat|Gobiidae|BOLD:AAW3032
 Awaous grammepomus|BIFB338-13|MZB-BIF00363|Indonesia.Jawa Barat|Gobiidae|BOLD:AAW3032
 Awaous grammepomus|BIFD1710-14|MZB-BIF2149|Indonesia.Jawa Timur|Gobiidae|BOLD:AAW3032
 Awaous grammepomus|BIFB388-13|MZB-BIF00413|Indonesia.Jawa Barat|Gobiidae|BOLD:AAW3032

Awaous grammepomus|BIFB338-13|MZB-BIF00363|Indonesia.Jawa Barat|Gobiidae|BOLD:AAW3032
Awaous grammepomus|BIFD1710-14|MZB-BIF2149|Indonesia.Jawa Timur|Gobiidae|BOLD:AAW3032
Awaous grammepomus|BIFB388-13|MZB-BIF00413|Indonesia.Jawa Barat|Gobiidae|BOLD:AAW3032
Sicyopterus microcephalus|BIFD2080-14|MZB-BIF2520|Indonesia.Bali|Gobiidae|BOLD:ACQ3771
Sicyopterus microcephalus|BIFD1620-14|MZB-BIF2059|Indonesia.Jawa Timur|Gobiidae|BOLD:ACQ3771
Sicyopterus microcephalus|BIFD2188-14|MZB-BIF2628|Indonesia.Bali|Gobiidae|BOLD:ACQ3771
Sicyopterus microcephalus|BIFD2557-14|MZB-BIF2997|Indonesia.Bali|Gobiidae|BOLD:ACQ3771
Sicyopterus microcephalus|BIFB400-13|MZB-BIF00425|Indonesia.Jawa Barat|Gobiidae|BOLD:ACQ3771
Sicyopterus microcephalus|BIFD1621-14|MZB-BIF2060|Indonesia.Jawa Timur|Gobiidae|BOLD:ACQ3771
Sicyopterus microcephalus|BIFD1989-14|MZB-BIF2429|Indonesia.Bali|Gobiidae|BOLD:ACQ3771
Sicyopterus microcephalus|BIFB399-13|MZB-BIF00424|Indonesia.Jawa Barat|Gobiidae|BOLD:ACQ3771
Sicyopterus microcephalus|BIFD1990-14|MZB-BIF2430|Indonesia.Bali|Gobiidae|BOLD:ACQ3771
Sicyopterus microcephalus|BIFD2081-14|MZB-BIF2521|Indonesia.Bali|Gobiidae|BOLD:ACQ3771
Sicyopterus microcephalus|BIFD1832-14|MZB-BIF2271|Indonesia.Bali|Gobiidae|BOLD:ACQ3771
Sicyopterus microcephalus|BIFB219-13|MZB-BIF00244|Indonesia.Jawa Barat|Gobiidae|BOLD:ACQ3771
Sicyopterus microcephalus|BIFD1241-14|MZB-BIF1680|Indonesia.Jawa Barat|Gobiidae|BOLD:ACQ3771
Sicyopterus microcephalus|BIFD2187-14|MZB-BIF2627|Indonesia.Bali|Gobiidae|BOLD:ACQ3771
Sicyopterus microcephalus|BIFD2559-14|MZB-BIF2999|Indonesia.Bali|Gobiidae|BOLD:ACQ3771
Sicyopterus microcephalus|BIFD1242-14|MZB-BIF1681|Indonesia.Jawa Barat|Gobiidae|BOLD:ACQ3771
Sicyopterus microcephalus|BIFD1546-14|MZB-BIF1985|Indonesia.Jawa Timur|Gobiidae|BOLD:ACQ3771
Sicyopterus microcephalus|BIFD1529-14|MZB-BIF1968|Indonesia.Jawa Timur|Gobiidae|BOLD:ACQ3771
Sicyopterus microcephalus|BIFD1240-14|MZB-BIF1679|Indonesia.Jawa Barat|Gobiidae|BOLD:ACQ3771
Sicyopterus microcephalus|BIFD1549-14|MZB-BIF1988|Indonesia.Jawa Timur|Gobiidae|BOLD:ACQ3771
Sicyopterus microcephalus|BIFD1831-14|MZB-BIF2270|Indonesia.Bali|Gobiidae|BOLD:ACQ3771
Sicyopterus lagocephalus|BIFD2460-14|MZB-BIF2900|Indonesia.Bali|Gobiidae|BOLD:AAE7447
Sicyopterus lagocephalus|BIFD1159-14|MZB-BIF1598|Indonesia.Banten|Gobiidae|BOLD:AAE7447
Sicyopterus lagocephalus|BIFD1178-14|MZB-BIF1617|Indonesia.Banten|Gobiidae|BOLD:AAE7447
Sicyopterus lagocephalus|BIFB413-13|MZB-BIF00438|Indonesia.Jawa Barat|Gobiidae|BOLD:AAE7447
Sicyopterus lagocephalus|BIFD2207-14|MZB-BIF2647|Indonesia.Bali|Gobiidae|BOLD:AAE7447
Sicyopterus lagocephalus|BIFD2245-14|MZB-BIF2685|Indonesia.Bali|Gobiidae|BOLD:AAE7447
Sicyopterus lagocephalus|BIFD2153-14|MZB-BIF2593|Indonesia.Bali|Gobiidae|BOLD:AAE7447
Sicyopterus lagocephalus|BIFD2208-14|MZB-BIF2648|Indonesia.Bali|Gobiidae|BOLD:AAE7447
Sicyopterus lagocephalus|BIFD1235-14|MZB-BIF1674|Indonesia.Banten|Gobiidae|BOLD:AAE7447
Sicyopterus lagocephalus|BIFD2112-14|MZB-BIF2552|Indonesia.Bali|Gobiidae|BOLD:AAE7447
Sicyopterus lagocephalus|BIFD2244-14|MZB-BIF2684|Indonesia.Bali|Gobiidae|BOLD:AAE7447
Sicyopterus lagocephalus|BIFD2459-14|MZB-BIF2899|Indonesia.Bali|Gobiidae|BOLD:AAE7447
Sicyopterus lagocephalus|BIFD1243-14|MZB-BIF1682|Indonesia.Jawa Barat|Gobiidae|BOLD:AAE7447
Sicyopterus lagocephalus|BIFD1165-14|MZB-BIF1604|Indonesia.Banten|Gobiidae|BOLD:AAE7447
Sicyopterus lagocephalus|BIFD1301-14|MZB-BIF1740|Indonesia.Jawa Barat|Gobiidae|BOLD:AAE7447
Sicyopterus lagocephalus|BIFD1160-14|MZB-BIF1599|Indonesia.Banten|Gobiidae|BOLD:AAE7447
Sicyopterus lagocephalus|BIFD1236-14|MZB-BIF1675|Indonesia.Jawa Barat|Gobiidae|BOLD:AAE7447
Sicyopterus lagocephalus|BIFD1550-14|MZB-BIF1989|Indonesia.Jawa Timur|Gobiidae|BOLD:AAE7447
Sicyopterus cynocephalus|BIFD2171-14|MZB-BIF2611|Indonesia.Bali|Gobiidae|BOLD:ACQ5284
Sicyopterus cynocephalus|BIFD1158-14|MZB-BIF1597|Indonesia.Banten|Gobiidae|BOLD:ACQ5284
Sicyopterus parveil|BIFD1351-14|MZB-BIF1790|Indonesia.Jawa Barat|Gobiidae|BOLD:ACQ4158
Sicyopterus parveil|BIFD1578-14|MZB-BIF2017|Indonesia.Jawa Timur|Gobiidae|BOLD:ACQ4158
Sicyopterus parveil|BIFD2172-14|MZB-BIF2612|Indonesia.Bali|Gobiidae|BOLD:ACQ4158
Sicyopterus parveil|BIFD1619-14|MZB-BIF2058|Indonesia.Jawa Timur|Gobiidae|BOLD:ACQ4158
Sicyopterus parveil|BIFD2152-14|MZB-BIF2592|Indonesia.Bali|Gobiidae|BOLD:ACQ4158
Sicyopterus parveil|BIFD2074-14|MZB-BIF2514|Indonesia.Bali|Gobiidae|BOLD:ACQ4158
Sicyopterus parveil|BIFD2072-14|MZB-BIF2512|Indonesia.Bali|Gobiidae|BOLD:ACQ4158
Sicyopterus parveil|BIFD2541-14|MZB-BIF2981|Indonesia.Bali|Gobiidae|BOLD:ACQ4158
Sicyopterus parveil|BIFD1352-14|MZB-BIF1791|Indonesia.Jawa Barat|Gobiidae|BOLD:ACQ4158
Sicyopterus parveil|BIFD2542-14|MZB-BIF2982|Indonesia.Bali|Gobiidae|BOLD:ACQ4158
Sicyopterus parveil|BIFB220-13|MZB-BIF00245|Indonesia.Jawa Barat|Gobiidae|BOLD:ACQ4158
Sicyopterus parveil|BIFD2075-14|MZB-BIF2515|Indonesia.Bali|Gobiidae|BOLD:ACQ4158
Sicyopterus parveil|BIFD1575-14|MZB-BIF2014|Indonesia.Jawa Timur|Gobiidae|BOLD:ACQ4158
Sicyopterus parveil|BIFD2186-14|MZB-BIF2626|Indonesia.Bali|Gobiidae|BOLD:ACQ4158
Sicyopterus parveil|BIFD1574-14|MZB-BIF2013|Indonesia.Jawa Timur|Gobiidae|BOLD:ACQ4158
Sicyopterus parveil|BIFD1579-14|MZB-BIF2018|Indonesia.Jawa Timur|Gobiidae|BOLD:ACQ4158
Sicyopterus parveil|BIFD1576-14|MZB-BIF2015|Indonesia.Jawa Timur|Gobiidae|BOLD:ACQ4158
Sicyopterus parveil|BIFD1577-14|MZB-BIF2016|Indonesia.Jawa Timur|Gobiidae|BOLD:ACQ4158
Sicyopterus parveil|BIFD2076-14|MZB-BIF2516|Indonesia.Bali|Gobiidae|BOLD:ACQ4158
Sicyopterus parveil|BIFD2071-14|MZB-BIF2511|Indonesia.Bali|Gobiidae|BOLD:ACQ4158
Sicyopterus parveil|BIFD2073-14|MZB-BIF2513|Indonesia.Bali|Gobiidae|BOLD:ACQ4158
Sicyopterus parveil|BIFD1302-14|MZB-BIF1741|Indonesia.Jawa Barat|Gobiidae|BOLD:ACQ4158
Sicyopterus parveil|BIFB221-13|MZB-BIF00246|Indonesia.Jawa Barat|Gobiidae|BOLD:ACQ4158
Lentipes ikeael|BIFD2179-14|MZB-BIF2619|Indonesia.Bali|Gobiidae|BOLD:ACB5379
Lentipes ikeael|BIFD1326-14|MZB-BIF1765|Indonesia.Jawa Barat|Gobiidae|BOLD:ACB5379
Lentipes ikeael|BIFD1308-14|MZB-BIF1747|Indonesia.Jawa Barat|Gobiidae|BOLD:ACB5379
Lentipes ikeael|BIFD1614-14|MZB-BIF2053|Indonesia.Jawa Timur|Gobiidae|BOLD:ACB5379
Lentipes ikeael|BIFD1329-14|MZB-BIF1768|Indonesia.Jawa Barat|Gobiidae|BOLD:ACB5379
Lentipes ikeael|BIFD1354-14|MZB-BIF1793|Indonesia.Jawa Barat|Gobiidae|BOLD:ACB5379
Lentipes ikeael|BIFD1355-14|MZB-BIF1794|Indonesia.Jawa Barat|Gobiidae|BOLD:ACB5379
Lentipes ikeael|BIFD2261-14|MZB-BIF2701|Indonesia.Bali|Gobiidae|BOLD:ACB5379
Lentipes ikeael|BIFD1328-14|MZB-BIF1767|Indonesia.Jawa Barat|Gobiidae|BOLD:ACB5379
Lentipes ikeael|BIFD2180-14|MZB-BIF2620|Indonesia.Bali|Gobiidae|BOLD:ACB5379
Lentipes ikeael|BIFD2451-14|MZB-BIF2891|Indonesia.Bali|Gobiidae|BOLD:ACB5379
Lentipes ikeael|BIFD2511-14|MZB-BIF2951|Indonesia.Bali|Gobiidae|BOLD:ACB5379
Lentipes ikeael|BIFD2164-14|MZB-BIF2604|Indonesia.Bali|Gobiidae|BOLD:ACB5379
Lentipes ikeael|BIFD1357-14|MZB-BIF1796|Indonesia.Jawa Barat|Gobiidae|BOLD:ACB5379
Lentipes ikeael|BIFD2252-14|MZB-BIF2692|Indonesia.Bali|Gobiidae|BOLD:ACB5379
Lentipes ikeael|BIFD2158-14|MZB-BIF2598|Indonesia.Bali|Gobiidae|BOLD:ACB5379
Lentipes ikeael|BIFD2544-14|MZB-BIF2984|Indonesia.Bali|Gobiidae|BOLD:ACB5379
Lentipes ikeael|BIFD2251-14|MZB-BIF2691|Indonesia.Bali|Gobiidae|BOLD:ACB5379
Lentipes ikeael|BIFD1356-14|MZB-BIF1795|Indonesia.Jawa Barat|Gobiidae|BOLD:ACB5379
Lentipes ikeael|BIFD1612-14|MZB-BIF2051|Indonesia.Jawa Timur|Gobiidae|BOLD:ACB5379
Lentipes ikeael|BIFD2447-14|MZB-BIF2887|Indonesia.Bali|Gobiidae|BOLD:ACB5379
Lentipes ikeael|BIFD2168-14|MZB-BIF2608|Indonesia.Bali|Gobiidae|BOLD:ACB5379
Lentipes ikeael|BIFD2456-14|MZB-BIF2896|Indonesia.Bali|Gobiidae|BOLD:ACB5379
Lentipes ikeael|BIFD2254-14|MZB-BIF2694|Indonesia.Bali|Gobiidae|BOLD:ACB5379
Lentipes ikeael|BIFD1353-14|MZB-BIF1792|Indonesia.Jawa Barat|Gobiidae|BOLD:ACB5379
Lentipes ikeael|BIFD2255-14|MZB-BIF2695|Indonesia.Bali|Gobiidae|BOLD:ACB5379
Lentipes ikeael|BIFD1358-14|MZB-BIF1797|Indonesia.Jawa Barat|Gobiidae|BOLD:ACB5379
Lentipes kaaael|BIFD2445-14|MZB-BIF2885|Indonesia.Bali|Gobiidae|BOLD:ACB4978
Lentipes kaaael|BIFD2162-14|MZB-BIF2602|Indonesia.Bali|Gobiidae|BOLD:ACB4978
Lentipes kaaael|BIFD2441-14|MZB-BIF2881|Indonesia.Bali|Gobiidae|BOLD:ACB4978
Lentipes kaaael|BIFD2258-14|MZB-BIF2698|Indonesia.Bali|Gobiidae|BOLD:ACB4978

Lentipes kaaeaBIFD12162-14IMZB-BIF2602Indonesia.BaliGobiidaeBOLD:ACB4978
Lentipes kaaeaBIFD2441-14IMZB-BIF2881Indonesia.BaliGobiidaeBOLD:ACB4978
Lentipes kaaeaBIFD2258-14IMZB-BIF2698Indonesia.BaliGobiidaeBOLD:ACB4978
Lentipes whittenorumBIFD2260-14IMZB-BIF2700Indonesia.BaliGobiidaeBOLD:ACQ1907
Lentipes whittenorumBIFD2103-14IMZB-BIF2543Indonesia.BaliGobiidaeBOLD:ACQ1907
Lentipes whittenorumBIFD2104-14IMZB-BIF2544Indonesia.BaliGobiidaeBOLD:ACQ1907
Lentipes whittenorumBIFD2173-14IMZB-BIF2613Indonesia.BaliGobiidaeBOLD:ACQ1907
Lentipes whittenorumBIFD2253-14IMZB-BIF2693Indonesia.BaliGobiidaeBOLD:ACQ1907
Lentipes whittenorumBIFD2181-14IMZB-BIF2621Indonesia.BaliGobiidaeBOLD:ACQ1907
Lentipes whittenorumBIFD2512-14IMZB-BIF2952Indonesia.BaliGobiidaeBOLD:ACQ1907
Lentipes whittenorumBIFD2446-14IMZB-BIF2886Indonesia.BaliGobiidaeBOLD:ACQ1907
Lentipes whittenorumBIFD2442-14IMZB-BIF2882Indonesia.BaliGobiidaeBOLD:ACQ1907
Lentipes whittenorumBIFD2455-14IMZB-BIF2895Indonesia.BaliGobiidaeBOLD:ACQ1907
Lentipes whittenorumBIFD2165-14IMZB-BIF2605Indonesia.BaliGobiidaeBOLD:ACQ1907
Lentipes whittenorumBIFD2159-14IMZB-BIF2599Indonesia.BaliGobiidaeBOLD:ACQ1907
Lentipes whittenorumBIFD2440-14IMZB-BIF2880Indonesia.BaliGobiidaeBOLD:ACQ1907
Lentipes whittenorumBIFD2163-14IMZB-BIF2603Indonesia.BaliGobiidaeBOLD:ACQ1907
Lentipes whittenorumBIFD2256-14IMZB-BIF2696Indonesia.BaliGobiidaeBOLD:ACQ1907
Lentipes whittenorumBIFD2443-14IMZB-BIF2883Indonesia.BaliGobiidaeBOLD:ACQ1907
Lentipes whittenorumBIFD2545-14IMZB-BIF2985Indonesia.BaliGobiidaeBOLD:ACQ1907
Lentipes whittenorumBIFD2514-14IMZB-BIF2954Indonesia.BaliGobiidaeBOLD:ACQ1907
Lentipes whittenorumBIFD2262-14IMZB-BIF2702Indonesia.BaliGobiidaeBOLD:ACQ1907
Lentipes whittenorumBIFD2453-14IMZB-BIF2893Indonesia.BaliGobiidaeBOLD:ACQ1907
Lentipes whittenorumBIFD2457-14IMZB-BIF2897Indonesia.BaliGobiidaeBOLD:ACQ1907
Lentipes whittenorumBIFD2513-14IMZB-BIF2953Indonesia.BaliGobiidaeBOLD:ACQ1907
Lentipes whittenorumBIFD2161-14IMZB-BIF2601Indonesia.BaliGobiidaeBOLD:ACQ1907
Sicyopus auxilimentusBIFD2177-14IMZB-BIF2617Indonesia.BaliGobiidaeBOLD:ACQ2296
Sicyopus auxilimentusBIFD1520-14IMZB-BIF1959Indonesia.Jawa TimurGobiidaeBOLD:ACQ2296
Sicyopus auxilimentusBIFD2174-14IMZB-BIF2614Indonesia.BaliGobiidaeBOLD:ACQ2296
Sicyopus auxilimentusBIFD1521-14IMZB-BIF1960Indonesia.Jawa TimurGobiidaeBOLD:ACQ2296
Sicyopus auxilimentusBIFD2230-14IMZB-BIF2670Indonesia.BaliGobiidaeBOLD:ACQ2296
Sicyopus auxilimentusBIFD2235-14IMZB-BIF2675Indonesia.BaliGobiidaeBOLD:ACQ2296
Sicyopus auxilimentusBIFD2231-14IMZB-BIF2671Indonesia.BaliGobiidaeBOLD:ACQ2296
Sicyopus auxilimentusBIFD2236-14IMZB-BIF2676Indonesia.BaliGobiidaeBOLD:ACQ2296
Sicyopus auxilimentusBIFD2279-14IMZB-BIF2719Indonesia.BaliGobiidaeBOLD:ACQ2296
Sicyopus rubicundusBIFD1046-14IMZB-BIF1485Indonesia.BantenGobiidaeBOLD:ACQ0605
Sicyopus rubicundusBIFD2184-14IMZB-BIF2624Indonesia.BaliGobiidaeBOLD:ACQ0605
Sicyopus rubicundusBIFD2182-14IMZB-BIF2622Indonesia.BaliGobiidaeBOLD:ACQ0605
Sicyopus rubicundusBIFD2102-14IMZB-BIF2542Indonesia.BaliGobiidaeBOLD:ACQ0605
Sicyopus rubicundusBIFD2250-14IMZB-BIF2690Indonesia.BaliGobiidaeBOLD:ACQ0605
Sicyopus rubicundusBIFD1611-14IMZB-BIF2050Indonesia.Jawa TimurGobiidaeBOLD:ACQ0605
Sicyopus rubicundusBIFD1299-14IMZB-BIF1738Indonesia.Jawa BaratGobiidaeBOLD:ACQ0605
Sicyopus rubicundusBIFD1050-14IMZB-BIF1489Indonesia.BantenGobiidaeBOLD:ACQ0605
Sicyopus rubicundusBIFD1567-14IMZB-BIF2006Indonesia.Jawa TimurGobiidaeBOLD:ACQ0605
Sicyopus rubicundusBIFD2101-14IMZB-BIF2541Indonesia.BaliGobiidaeBOLD:ACQ0605
Sicyopus rubicundusBIFD2100-14IMZB-BIF2540Indonesia.BaliGobiidaeBOLD:ACQ0605
Sicyopus rubicundusBIFD2183-14IMZB-BIF2623Indonesia.BaliGobiidaeBOLD:ACQ0605
Sicyopus rubicundusBIFD1568-14IMZB-BIF2007Indonesia.Jawa TimurGobiidaeBOLD:ACQ0605
Sicyopus rubicundusBIFD2211-14IMZB-BIF2651Indonesia.BaliGobiidaeBOLD:ACQ0605
Sicyopus rubicundusBIFD1298-14IMZB-BIF1737Indonesia.Jawa BaratGobiidaeBOLD:ACQ0605
Sicyopus rubicundusBIFD2098-14IMZB-BIF2538Indonesia.BaliGobiidaeBOLD:ACQ0605
Sicyopus rubicundusBIFD1609-14IMZB-BIF2048Indonesia.Jawa TimurGobiidaeBOLD:ACQ0605
Sicyopus rubicundusBIFD1591-14IMZB-BIF2030Indonesia.Jawa TimurGobiidaeBOLD:ACQ0605
Sicyopus rubicundusBIFD1047-14IMZB-BIF1486Indonesia.BantenGobiidaeBOLD:ACQ0605
Sicyopus rubicundusBIFD2185-14IMZB-BIF2625Indonesia.BaliGobiidaeBOLD:ACQ0605
Sicyopus rubicundusBIFD1051-14IMZB-BIF1490Indonesia.BantenGobiidaeBOLD:ACQ0605
Sicyopus rubicundusBIFD1309-14IMZB-BIF1748Indonesia.Jawa BaratGobiidaeBOLD:ACQ0605
Sicyopus rubicundusBIFD1610-14IMZB-BIF2049Indonesia.Jawa TimurGobiidaeBOLD:ACQ0605
Sicyopus rubicundusBIFD2519-14IMZB-BIF2959Indonesia.BaliGobiidaeBOLD:ACQ0605
Sicyopus rubicundusBIFD1570-14IMZB-BIF2009Indonesia.Jawa TimurGobiidaeBOLD:ACQ0605
Sicyopus rubicundusBIFD2175-14IMZB-BIF2615Indonesia.BaliGobiidaeBOLD:ACQ0605
Sicyopus rubicundusBIFD1569-14IMZB-BIF2008Indonesia.Jawa TimurGobiidaeBOLD:ACQ0605
Sicyopus zosterophorumBIFD2213-14IMZB-BIF2653Indonesia.BaliGobiidaeBOLD:ACB3978
Sicyopus zosterophorumBIFD2176-14IMZB-BIF2616Indonesia.BaliGobiidaeBOLD:ACB3978
Sicyopus zosterophorumBIFD2233-14IMZB-BIF2673Indonesia.BaliGobiidaeBOLD:ACB3978
Sicyopus zosterophorumBIFD2238-14IMZB-BIF2678Indonesia.BaliGobiidaeBOLD:ACB3978
Sicyopus zosterophorumBIFD2555-14IMZB-BIF2995Indonesia.BaliGobiidaeBOLD:ACB3978
Sicyopus zosterophorumBIFD2239-14IMZB-BIF2679Indonesia.BaliGobiidaeBOLD:ACB3978
Sicyopus zosterophorumBIFD2546-14IMZB-BIF2986Indonesia.BaliGobiidaeBOLD:ACB3978
Sicyopus zosterophorumBIFD2263-14IMZB-BIF2703Indonesia.BaliGobiidaeBOLD:ACB3978
Sicyopus zosterophorumBIFD2212-14IMZB-BIF2652Indonesia.BaliGobiidaeBOLD:ACB3978
Sicyopus zosterophorumBIFD2554-14IMZB-BIF2994Indonesia.BaliGobiidaeBOLD:ACB3978
Sicyopus zosterophorumBIFD1613-14IMZB-BIF2052Indonesia.Jawa TimurGobiidaeBOLD:ACB3978
Sicyopus zosterophorumBIFD2232-14IMZB-BIF2672Indonesia.BaliGobiidaeBOLD:ACB3978
Stiphodon rutilaureusBIFD2382-14IMZB-BIF2822Indonesia.BaliGobiidaeBOLD:ACB6150
Stiphodon aureofuscusBIFD2243-14IMZB-BIF2683Indonesia.BaliGobiidaeBOLD:ACP9895
Stiphodon aureofuscusBIFD2278-14IMZB-BIF2718Indonesia.BaliGobiidaeBOLD:ACP9895
Stiphodon aureofuscusBIFD1608-14IMZB-BIF2047Indonesia.Jawa TimurGobiidaeBOLD:ACP9895
Stiphodon aureofuscusBIFD2242-14IMZB-BIF2682Indonesia.BaliGobiidaeBOLD:ACP9895
Stiphodon aureofuscusBIFD1606-14IMZB-BIF2045Indonesia.Jawa TimurGobiidaeBOLD:ACP9895
Stiphodon aureofuscusBIFD1607-14IMZB-BIF2046Indonesia.Jawa TimurGobiidaeBOLD:ACP9895
Stiphodon maculidorsalisBIFD1008-14IMZB-BIF1447Indonesia.BantenGobiidaeBOLD:AAF3347
Stiphodon peluwensisBIFD1014-14IMZB-BIF1453Indonesia.BantenGobiidaeBOLD:AAF3347
Stiphodon carisalBIFD2141-14IMZB-BIF2581Indonesia.BaliGobiidaeBOLD:ACQ3311
Stiphodon carisalBIFD2134-14IMZB-BIF2574Indonesia.BaliGobiidaeBOLD:ACQ3311
Stiphodon carisalBIFD2218-14IMZB-BIF2658Indonesia.BaliGobiidaeBOLD:ACQ3311
Stiphodon carisalBIFD1785-14IMZB-BIF2224Indonesia.BaliGobiidaeBOLD:ACQ3311
Stiphodon carisalBIFD2142-14IMZB-BIF2582Indonesia.BaliGobiidaeBOLD:ACQ3311
Stiphodon carisalBIFD1793-14IMZB-BIF2232Indonesia.BaliGobiidaeBOLD:ACQ3311
Stiphodon carisalBIFD1800-14IMZB-BIF2239Indonesia.BaliGobiidaeBOLD:ACQ3311
Stiphodon carisalBIFD1276-14IMZB-BIF1715Indonesia.Jawa BaratGobiidaeBOLD:ACQ3311
Stiphodon carisalBIFD1604-14IMZB-BIF2043Indonesia.Jawa TimurGobiidaeBOLD:ACQ3311
Stiphodon carisalBIFD2006-14IMZB-BIF2446Indonesia.BaliGobiidaeBOLD:ACQ3311
Stiphodon carisalBIFD1815-14IMZB-BIF2254Indonesia.BaliGobiidaeBOLD:ACQ3311
Stiphodon carisalBIFD2094-14IMZB-BIF2534Indonesia.BaliGobiidaeBOLD:ACQ3311
Stiphodon carisalBIFD1920-14IMZB-BIF2360Indonesia.BaliGobiidaeBOLD:ACQ3311
Stiphodon carisalBIFD2004-14IMZB-BIF2444Indonesia.BaliGobiidaeBOLD:ACQ3311
Stiphodon carisalBIFD2001-14IMZB-BIF2441Indonesia.BaliGobiidaeBOLD:ACQ3311

Stiphodon carisalBIFD1920-14IMZB-BIF2300Indonesia.BaliGobiidaeBOLD:ACQ3311
Stiphodon carisalBIFD2004-14IMZB-BIF2444Indonesia.BaliGobiidaeBOLD:ACQ3311
Stiphodon carisalBIFD2001-14IMZB-BIF2441Indonesia.BaliGobiidaeBOLD:ACQ3311
Stiphodon carisalBIFD1922-14IMZB-BIF2362Indonesia.BaliGobiidaeBOLD:ACQ3311
Stiphodon carisalBIFD1605-14IMZB-BIF2044Indonesia.Jawa TimurGobiidaeBOLD:ACQ3311
Stiphodon carisalBIFD1918-14IMZB-BIF2358Indonesia.BaliGobiidaeBOLD:ACQ3311
Stiphodon carisalBIFD2000-14IMZB-BIF2440Indonesia.BaliGobiidaeBOLD:ACQ3311
Stiphodon carisalBIFD2132-14IMZB-BIF2572Indonesia.BaliGobiidaeBOLD:ACQ3311
Stiphodon carisalBIFD2133-14IMZB-BIF2573Indonesia.BaliGobiidaeBOLD:ACQ3311
Stiphodon carisalBIFD2093-14IMZB-BIF2533Indonesia.BaliGobiidaeBOLD:ACQ3311
Stiphodon carisalBIFD2009-14IMZB-BIF2449Indonesia.BaliGobiidaeBOLD:ACQ3311
Stiphodon carisalBIFD2091-14IMZB-BIF2531Indonesia.BaliGobiidaeBOLD:ACQ3311
Stiphodon carisalBIFD1917-14IMZB-BIF2357Indonesia.BaliGobiidaeBOLD:ACQ3311
Stiphodon carisalBIFD2007-14IMZB-BIF2447Indonesia.BaliGobiidaeBOLD:ACQ3311
Stiphodon carisalBIFD2221-14IMZB-BIF2661Indonesia.BaliGobiidaeBOLD:ACQ3311
Stiphodon carisalBIFD2385-14IMZB-BIF2825Indonesia.BaliGobiidaeBOLD:ACQ3311
Stiphodon carisalBIFD2131-14IMZB-BIF2571Indonesia.BaliGobiidaeBOLD:ACQ3311
Stiphodon semoniBIFD1275-14IMZB-BIF1714Indonesia.Jawa BaratGobiidaeBOLD:ACQ3312
Stiphodon semoniBIFD1273-14IMZB-BIF1712Indonesia.Jawa BaratGobiidaeBOLD:ACQ3312
Stiphodon semoniBIFD1528-14IMZB-BIF1967Indonesia.Jawa TimurGobiidaeBOLD:ACQ3312
Stiphodon semoniBIFD1270-14IMZB-BIF1709Indonesia.Jawa BaratGobiidaeBOLD:ACQ3312
Stiphodon semoniBIFD1269-14IMZB-BIF1708Indonesia.Jawa BaratGobiidaeBOLD:ACQ3312
Stiphodon semoniBIFD1274-14IMZB-BIF1713Indonesia.Jawa BaratGobiidaeBOLD:ACQ3312
Stiphodon semoniBIFD1271-14IMZB-BIF1710Indonesia.Jawa BaratGobiidaeBOLD:ACQ3312
Stiphodon semoniBIFD1272-14IMZB-BIF1711Indonesia.Jawa BaratGobiidaeBOLD:ACQ3312
Schismatogobius bruyisilBIFD2110-14IMZB-BIF2550Indonesia.BaliGobiidaeBOLD:ACP9881
Schismatogobius bruyisilBIFD1005-14IMZB-BIF1444Indonesia.BantenGobiidaeBOLD:ACP9881
Schismatogobius bruyisilBIFD2108-14IMZB-BIF2548Indonesia.BaliGobiidaeBOLD:ACP9881
Schismatogobius bruyisilBIFD2395-14IMZB-BIF2835Indonesia.BaliGobiidaeBOLD:ACP9881
Schismatogobius bruyisilBIFD2109-14IMZB-BIF2549Indonesia.BaliGobiidaeBOLD:ACP9881
Schismatogobius bruyisilBIFD1058-14IMZB-BIF1497Indonesia.BantenGobiidaeBOLD:ACP9881
Schismatogobius bruyisilBIFD2396-14IMZB-BIF2836Indonesia.BaliGobiidaeBOLD:ACP9881
Schismatogobius bruyisilBIFD1006-14IMZB-BIF1445Indonesia.BantenGobiidaeBOLD:ACP9881
Schismatogobius marmoratusBIFB161-13IMZB-BIF00186Indonesia.Jawa BaratGobiidaeBOLD:ACP9882
Schismatogobius marmoratusBIFD1200-14IMZB-BIF1639Indonesia.BantenGobiidaeBOLD:ACP9882
Schismatogobius marmoratusBIFB163-13IMZB-BIF00188Indonesia.Jawa BaratGobiidaeBOLD:ACP9882
Schismatogobius marmoratusBIFD1201-14IMZB-BIF1640Indonesia.BantenGobiidaeBOLD:ACP9882
Schismatogobius marmoratusBIFD1926-14IMZB-BIF2366Indonesia.BaliGobiidaeBOLD:ACP9882
Schismatogobius marmoratusBIFB375-13IMZB-BIF00400Indonesia.Jawa BaratGobiidaeBOLD:ACP9882
Schismatogobius marmoratusBIFD2107-14IMZB-BIF2547Indonesia.BaliGobiidaeBOLD:ACP9882
Schismatogobius marmoratusBIFD1996-14IMZB-BIF2436Indonesia.BaliGobiidaeBOLD:ACP9882
Schismatogobius marmoratusBIFD1198-14IMZB-BIF1637Indonesia.BantenGobiidaeBOLD:ACP9882
Schismatogobius marmoratusBIFD2105-14IMZB-BIF2545Indonesia.BaliGobiidaeBOLD:ACP9882
Schismatogobius marmoratusBIFB377-13IMZB-BIF00402Indonesia.Jawa BaratGobiidaeBOLD:ACP9882
Schismatogobius marmoratusBIFD1928-14IMZB-BIF2368Indonesia.BaliGobiidaeBOLD:ACP9882
Schismatogobius marmoratusBIFB209-13IMZB-BIF00234Indonesia.Jawa BaratGobiidaeBOLD:ACP9882
Schismatogobius marmoratusBIFD1199-14IMZB-BIF1638Indonesia.BantenGobiidaeBOLD:ACP9882
Schismatogobius marmoratusBIFD1927-14IMZB-BIF2367Indonesia.BaliGobiidaeBOLD:ACP9882
Schismatogobius marmoratusBIFB210-13IMZB-BIF00235Indonesia.Jawa BaratGobiidaeBOLD:ACP9882
Schismatogobius marmoratusBIFD1932-14IMZB-BIF2372Indonesia.BaliGobiidaeBOLD:ACP9882
Schismatogobius marmoratusBIFD1930-14IMZB-BIF2370Indonesia.BaliGobiidaeBOLD:ACP9882
Schismatogobius marmoratusBIFB376-13IMZB-BIF00401Indonesia.Jawa BaratGobiidaeBOLD:ACP9882
Schismatogobius marmoratusBIFD1202-14IMZB-BIF1641Indonesia.BantenGobiidaeBOLD:ACP9882
Schismatogobius marmoratusBIFD1254-14IMZB-BIF1693Indonesia.Jawa BaratGobiidaeBOLD:ACP9882
Schismatogobius marmoratusBIFD1994-14IMZB-BIF2434Indonesia.BaliGobiidaeBOLD:ACP9882
Schismatogobius marmoratusBIFB162-13IMZB-BIF00187Indonesia.Jawa BaratGobiidaeBOLD:ACP9882
Schismatogobius marmoratusBIFD2106-14IMZB-BIF2546Indonesia.BaliGobiidaeBOLD:ACP9882
Schismatogobius marmoratusBIFD1998-14IMZB-BIF2438Indonesia.BaliGobiidaeBOLD:ACP9882
Schismatogobius marmoratusBIFB211-13IMZB-BIF00236Indonesia.Jawa BaratGobiidaeBOLD:ACP9882
Schismatogobius marmoratusBIFB212-13IMZB-BIF00237Indonesia.Jawa BaratGobiidaeBOLD:ACP9882
Schismatogobius marmoratusBIFB160-13IMZB-BIF00185Indonesia.Jawa BaratGobiidaeBOLD:ACP9882
Schismatogobius marmoratusBIFD1929-14IMZB-BIF2369Indonesia.BaliGobiidaeBOLD:ACP9882
Butis amboinensisBIFD2695-15IMZB-BIF3574Indonesia.Jawa TengahEleotridaeBOLD:AAJ3804
Aplocheilus panchaxBIFD1715-14IMZB-BIF2154Indonesia.Jawa TimurAplocheilidaeBOLD:AAJ1251
Aplocheilus panchaxBIFD1714-14IMZB-BIF2153Indonesia.Jawa TimurAplocheilidaeBOLD:AAJ1251
Aplocheilus panchaxBIFD1711-14IMZB-BIF2150Indonesia.Jawa TimurAplocheilidaeBOLD:AAJ1251
Aplocheilus panchaxBIFD1712-14IMZB-BIF2151Indonesia.Jawa TimurAplocheilidaeBOLD:AAJ1251
Aplocheilus panchaxBIFD1134-14IMZB-BIF1573Indonesia.BantenAplocheilidaeBOLD:AAJ1251
Aplocheilus panchaxBIFD1138-14IMZB-BIF1577Indonesia.BantenAplocheilidaeBOLD:AAJ1251
Aplocheilus panchaxBIFD1135-14IMZB-BIF1574Indonesia.BantenAplocheilidaeBOLD:AAJ1251
Aplocheilus panchaxBIFD1137-14IMZB-BIF1576Indonesia.BantenAplocheilidaeBOLD:AAJ1251
Aplocheilus panchaxBIFD969-14IMZB-BIF1408Indonesia.BantenAplocheilidaeBOLD:AAJ1251
Aplocheilus panchaxBIFD1136-14IMZB-BIF1575Indonesia.BantenAplocheilidaeBOLD:AAJ1251
Aplocheilus panchaxBIFD1114-14IMZB-BIF1553Indonesia.BantenAplocheilidaeBOLD:AAJ1251
Aplocheilus panchaxBIFD2323-14IMZB-BIF2763Indonesia.BaliAplocheilidaeBOLD:AAJ1251
Aplocheilus panchaxBIFD2322-14IMZB-BIF2762Indonesia.BaliAplocheilidaeBOLD:AAJ1251
Aplocheilus panchaxBIFD2321-14IMZB-BIF2761Indonesia.BaliAplocheilidaeBOLD:AAJ1251
Aplocheilus panchaxBIFD2319-14IMZB-BIF2759Indonesia.BaliAplocheilidaeBOLD:AAJ1251
Aplocheilus panchaxBIFD2320-14IMZB-BIF2760Indonesia.BaliAplocheilidaeBOLD:AAJ1251
Aplocheilus panchaxBIFD1713-14IMZB-BIF2152Indonesia.Jawa TimurAplocheilidaeBOLD:AAJ1251
Aplocheilus panchaxBIFD1670-14IMZB-BIF2109Indonesia.Jawa TimurAplocheilidaeBOLD:AAJ1251
Aplocheilus panchaxBIFD1669-14IMZB-BIF2108Indonesia.Jawa TimurAplocheilidaeBOLD:AAJ1251
Aplocheilus panchaxBIFD839-13IMZB-BIF01278Indonesia.Jawa TengahAplocheilidaeBOLD:AAJ1251
Aplocheilus panchaxBIFD840-13IMZB-BIF01279Indonesia.Jawa TengahAplocheilidaeBOLD:AAJ1251
Aplocheilus panchaxBIFD837-13IMZB-BIF01276Indonesia.Jawa TengahAplocheilidaeBOLD:AAJ1251
Aplocheilus panchaxBIFD841-13IMZB-BIF01280Indonesia.Jawa TengahAplocheilidaeBOLD:AAJ1251
Aplocheilus panchaxBIFD838-13IMZB-BIF01277Indonesia.Jawa TengahAplocheilidaeBOLD:AAJ1251
Aplocheilus panchaxBIFD527-13IMZB-BIF00966Indonesia.Jawa TengahAplocheilidaeBOLD:AAJ1251
Aplocheilus panchaxBIFD526-13IMZB-BIF00965Indonesia.Jawa TengahAplocheilidaeBOLD:AAJ1251
Aplocheilus panchaxBIFD525-13IMZB-BIF00964Indonesia.Jawa TengahAplocheilidaeBOLD:AAJ1251
Butis gymnopomusBIFB289-13IMZB-BIF00314Indonesia.Jawa BaratEleotridaeBOLD:ACQ4641
Butis gymnopomusBIFB286-13IMZB-BIF00311Indonesia.Jawa BaratEleotridaeBOLD:ACQ4641
Butis gymnopomusBIFD1887-14IMZB-BIF2327Indonesia.BaliEleotridaeBOLD:ACQ4641
Butis gymnopomusBIFB288-13IMZB-BIF00313Indonesia.Jawa BaratEleotridaeBOLD:ACQ4641
Butis gymnopomusBIFD1018-14IMZB-BIF1457Indonesia.BantenEleotridaeBOLD:ACQ4641
Butis gymnopomusBIFD1017-14IMZB-BIF1456Indonesia.BantenEleotridaeBOLD:ACQ4641
Butis gymnopomusBIFD1895-14IMZB-BIF2335Indonesia.BaliEleotridaeBOLD:ACQ4641
Butis gymnopomusBIFB285-13IMZB-BIF00310Indonesia.Jawa BaratEleotridaeBOLD:ACQ4641
Butis gymnopomusBIFB287-13IMZB-BIF00312Indonesia.Jawa BaratEleotridaeBOLD:ACQ4641



Nemacheilus chrysolaimos|BIFB076-13|IMZB-BIF00101|Indonesia.Jawa Barat|Nemacheilidae|BOLD:ACQ8623
 Nemacheilus chrysolaimos|BIFB075-13|IMZB-BIF00100|Indonesia.Jawa Barat|Nemacheilidae|BOLD:ACQ8623
 Nemacheilus fasciatus|BIFD2730-15|IMZB-BIF3609|Indonesia.Jawa Timur|Nemacheilidae|BOLD:ACP6251
 Nemacheilus fasciatus|BIFD394-13|IMZB-BIF00833|Indonesia.Jawa Tengah|Nemacheilidae|BOLD:ACP6251
 Nemacheilus fasciatus|BIFD393-13|IMZB-BIF00832|Indonesia.Jawa Tengah|Nemacheilidae|BOLD:ACP6251
 Nemacheilus fasciatus|BIFD2613-15|IMZB-BIF3492|Indonesia.Jawa Tengah|Nemacheilidae|BOLD:ACP6251
 Nemacheilus fasciatus|BIFD2614-15|IMZB-BIF3493|Indonesia.Jawa Tengah|Nemacheilidae|BOLD:ACP6251
 Nemacheilus fasciatus|BIFD2615-15|IMZB-BIF3494|Indonesia.Jawa Tengah|Nemacheilidae|BOLD:ACP6251
 Nemacheilus fasciatus|BIFD1754-14|IMZB-BIF2193|Indonesia.Jawa Timur|Nemacheilidae|BOLD:ACP6251
 Nemacheilus fasciatus|BIFD1758-14|IMZB-BIF2197|Indonesia.Jawa Timur|Nemacheilidae|BOLD:ACP6251
 Osteochilus microcephalus|BIFD220-13|IMZB-BIF00659|Indonesia.Jawa Barat|Cyprinidae|BOLD:ACT1727
 Osteochilus microcephalus|BIFD243-13|IMZB-BIF00871|Indonesia.Jawa Barat|Cyprinidae|BOLD:ACT1727
 Osteochilus microcephalus|BIFD432-13|IMZB-BIF00871|Indonesia.Jawa Tengah|Cyprinidae|BOLD:ACT1727
 Osteochilus microcephalus|BIFD706-13|IMZB-BIF01145|Indonesia.Jawa Tengah|Cyprinidae|BOLD:ACT1727
 Osteochilus microcephalus|BIFD705-13|IMZB-BIF01144|Indonesia.Jawa Tengah|Cyprinidae|BOLD:ACT1727
 Osteochilus microcephalus|BIFD433-13|IMZB-BIF00872|Indonesia.Jawa Tengah|Cyprinidae|BOLD:ACT1727
 Osteochilus microcephalus|BIFD385-13|IMZB-BIF00824|Indonesia.Jawa Barat|Cyprinidae|BOLD:ACT1727
 Osteochilus microcephalus|BIFD244-13|IMZB-BIF00683|Indonesia.Jawa Barat|Cyprinidae|BOLD:ACT1727
 Osteochilus microcephalus|BIFD221-13|IMZB-BIF00660|Indonesia.Jawa Barat|Cyprinidae|BOLD:ACT1727
 Osteochilus microcephalus|BIFD384-13|IMZB-BIF00823|Indonesia.Jawa Barat|Cyprinidae|BOLD:ACT1727
 Osteochilus vittatus|BIFD2816-15|IMZB-BIF3696|Indonesia.Jawa Timur|Cyprinidae|BOLD:ACC0089
 Osteochilus vittatus|BIFD2815-15|IMZB-BIF3695|Indonesia.Jawa Timur|Cyprinidae|BOLD:ACC0089
 Osteochilus vittatus|BIFD784-13|IMZB-BIF01223|Indonesia.Jawa Tengah|Cyprinidae|BOLD:ACC0089
 Osteochilus vittatus|BIFD785-13|IMZB-BIF01224|Indonesia.Jawa Tengah|Cyprinidae|BOLD:ACC0089
 Puntius brevis|BIFD779-13|IMZB-BIF01218|Indonesia.Jawa Tengah|Cyprinidae|BOLD:ACQ4109
 Puntius brevis|BIFD778-13|IMZB-BIF01217|Indonesia.Jawa Tengah|Cyprinidae|BOLD:ACQ4109
 Puntius brevis|BIFD780-13|IMZB-BIF01219|Indonesia.Jawa Tengah|Cyprinidae|BOLD:ACQ4109
 Puntius brevis|BIFD777-13|IMZB-BIF01216|Indonesia.Jawa Tengah|Cyprinidae|BOLD:ACQ4109
 Puntius brevis|BIFD776-13|IMZB-BIF01215|Indonesia.Jawa Tengah|Cyprinidae|BOLD:ACQ4109
 Puntigrus tetrazonalis|BIFB011-13|IMZB-BIF00036|Indonesia.Jawa Barat|Cyprinidae|BOLD:AAD9761
 Puntigrus tetrazonalis|BIFB012-13|IMZB-BIF00037|Indonesia.Jawa Barat|Cyprinidae|BOLD:AAD9761
 Puntigrus tetrazonalis|BIFB015-13|IMZB-BIF00040|Indonesia.Jawa Barat|Cyprinidae|BOLD:AAD9761
 Puntigrus tetrazonalis|BIFB014-13|IMZB-BIF00039|Indonesia.Jawa Barat|Cyprinidae|BOLD:AAD9761
 Puntigrus tetrazonalis|BIFB013-13|IMZB-BIF00038|Indonesia.Jawa Barat|Cyprinidae|BOLD:AAD9761
 Leptobarbus melanopterus|BIFD2843-15|IMZB-BIF3723|Indonesia.Jawa Timur|Cyprinidae|BOLD:ACT1925
 Leptobarbus melanopterus|BIFD2814-15|IMZB-BIF3694|Indonesia.Jawa Timur|Cyprinidae|BOLD:ACT1925
 Cyclocheilichthys enoplos|BIFD2853-15|IMZB-BIF3733|Indonesia.Jawa Timur|Cyprinidae|BOLD:ACT5293
 Cyclocheilichthys enoplos|BIFD2854-15|IMZB-BIF3734|Indonesia.Jawa Timur|Cyprinidae|BOLD:ACT5293
 Cyclocheilichthys enoplos|BIFD2852-15|IMZB-BIF3732|Indonesia.Jawa Timur|Cyprinidae|BOLD:ACT5293
 Cyclocheilichthys enoplos|BIFD2797-15|IMZB-BIF3677|Indonesia.Jawa Timur|Cyprinidae|BOLD:ACT5293
 Cyclocheilichthys enoplos|BIFD2855-15|IMZB-BIF3735|Indonesia.Jawa Timur|Cyprinidae|BOLD:ACT5293
 Labiobarbus fasciatus|BIFD246-13|IMZB-BIF00685|Indonesia.Jawa Barat|Cyprinidae|BOLD:AAX0792
 Labiobarbus fasciatus|BIFD245-13|IMZB-BIF00684|Indonesia.Jawa Barat|Cyprinidae|BOLD:AAX0792
 Mystacoleucus marginatus|BIFD2794-15|IMZB-BIF3674|Indonesia.Jawa Timur|Cyprinidae|BOLD:ACT7951
 Mystacoleucus marginatus|BIFD2851-15|IMZB-BIF3731|Indonesia.Jawa Timur|Cyprinidae|BOLD:ACT7951
 Mystacoleucus marginatus|BIFD2795-15|IMZB-BIF3675|Indonesia.Jawa Timur|Cyprinidae|BOLD:ACT7951
 Mystacoleucus marginatus|BIFD2850-15|IMZB-BIF3730|Indonesia.Jawa Timur|Cyprinidae|BOLD:ACT7951
 Mystacoleucus marginatus|BIFD1671-14|IMZB-BIF2110|Indonesia.Jawa Timur|Cyprinidae|BOLD:ACT7951
 Mystacoleucus marginatus|BIFD123-13|IMZB-BIF00562|Indonesia.Jawa Barat|Cyprinidae|BOLD:ACT7951
 Mystacoleucus marginatus|BIFD124-13|IMZB-BIF00563|Indonesia.Jawa Barat|Cyprinidae|BOLD:ACT7951
 Mystacoleucus marginatus|BIFD084-13|IMZB-BIF00523|Indonesia.Jawa Barat|Cyprinidae|BOLD:ACT7951
 Mystacoleucus marginatus|BIFD373-13|IMZB-BIF00812|Indonesia.Jawa Barat|Cyprinidae|BOLD:ACT7951
 Barbonymus balleroides|BIFD2823-15|IMZB-BIF3703|Indonesia.Jawa Timur|Cyprinidae|BOLD:AAD1940
 Barbonymus balleroides|BIFD2844-15|IMZB-BIF3724|Indonesia.Jawa Timur|Cyprinidae|BOLD:AAD1940
 Barbonymus balleroides|BIFD2822-15|IMZB-BIF3702|Indonesia.Jawa Timur|Cyprinidae|BOLD:AAD1940
 Barbonymus balleroides|BIFD021-13|IMZB-BIF00460|Indonesia.Jawa Barat|Cyprinidae|BOLD:AAD1940
 Barbonymus balleroides|BIFD254-13|IMZB-BIF00693|Indonesia.Jawa Barat|Cyprinidae|BOLD:AAD1940
 Barbonymus balleroides|BIFD257-13|IMZB-BIF00696|Indonesia.Jawa Barat|Cyprinidae|BOLD:AAD1940
 Barbonymus balleroides|BIFD255-13|IMZB-BIF00694|Indonesia.Jawa Barat|Cyprinidae|BOLD:AAD1940
 Barbonymus balleroides|BIFD2846-15|IMZB-BIF3726|Indonesia.Jawa Timur|Cyprinidae|BOLD:AAD1940
 Barbonymus balleroides|BIFD2824-15|IMZB-BIF3704|Indonesia.Jawa Timur|Cyprinidae|BOLD:AAD1940
 Barbonymus balleroides|BIFD019-13|IMZB-BIF00458|Indonesia.Jawa Barat|Cyprinidae|BOLD:AAD1940
 Barbonymus balleroides|BIFD2845-15|IMZB-BIF3725|Indonesia.Jawa Timur|Cyprinidae|BOLD:AAD1940
 Barbonymus gonionotus|BIFD2810-15|IMZB-BIF3690|Indonesia.Jawa Timur|Cyprinidae|BOLD:AAU0688
 Barbonymus gonionotus|BIFD2812-15|IMZB-BIF3692|Indonesia.Jawa Timur|Cyprinidae|BOLD:AAU0688
 Barbonymus gonionotus|BIFD2811-15|IMZB-BIF3691|Indonesia.Jawa Timur|Cyprinidae|BOLD:AAU0688
 Barbonymus gonionotus|BIFD2856-15|IMZB-BIF3736|Indonesia.Jawa Timur|Cyprinidae|BOLD:AAU0688
 Barbonymus gonionotus|BIFD2857-15|IMZB-BIF3737|Indonesia.Jawa Timur|Cyprinidae|BOLD:AAU0688
 Barbonymus gonionotus|BIFD2858-15|IMZB-BIF3738|Indonesia.Jawa Timur|Cyprinidae|BOLD:AAU0688
 Barbonymus gonionotus|BIFD2849-15|IMZB-BIF3729|Indonesia.Jawa Timur|Cyprinidae|BOLD:AAU0688
 Barbonymus gonionotus|BIFD378-13|IMZB-BIF00817|Indonesia.Jawa Barat|Cyprinidae|BOLD:AAU0688
 Barbonymus gonionotus|BIFD380-13|IMZB-BIF00819|Indonesia.Jawa Barat|Cyprinidae|BOLD:AAU0688
 Barbonymus gonionotus|BIFD379-13|IMZB-BIF00818|Indonesia.Jawa Barat|Cyprinidae|BOLD:AAU0688
 Barbonymus gonionotus|BIFD381-13|IMZB-BIF00820|Indonesia.Jawa Barat|Cyprinidae|BOLD:AAU0688
 Puntioplites waandersii|BIFD2859-15|IMZB-BIF3739|Indonesia.Jawa Timur|Cyprinidae|BOLD:ACT5239
 Hampala macrolepidota|BIFB033-13|IMZB-BIF00058|Indonesia.Jawa Barat|Cyprinidae|BOLD:AAU1770
 Hampala macrolepidota|BIFD2829-15|IMZB-BIF3709|Indonesia.Jawa Timur|Cyprinidae|BOLD:AAU1770
 Hampala macrolepidota|BIFD2827-15|IMZB-BIF3707|Indonesia.Jawa Timur|Cyprinidae|BOLD:AAU1770
 Hampala macrolepidota|BIFD2828-15|IMZB-BIF3708|Indonesia.Jawa Timur|Cyprinidae|BOLD:AAU1770
 Tor tambroides|BIFD444-13|IMZB-BIF00883|Indonesia.Jawa Tengah|Cyprinidae|BOLD:ACC0378
 Tor tambroides|BIFD443-13|IMZB-BIF00882|Indonesia.Jawa Tengah|Cyprinidae|BOLD:ACC0378
 Barbodes binotatus|BIFB141-13|IMZB-BIF00166|Indonesia.Jawa Barat|Cyprinidae|BOLD:ACP6290
 Barbodes binotatus|BIFB140-13|IMZB-BIF00165|Indonesia.Jawa Barat|Cyprinidae|BOLD:ACP6290
 Barbodes binotatus|BIFD161-13|IMZB-BIF00600|Indonesia.Jawa Barat|Cyprinidae|BOLD:ACP6025
 Barbodes binotatus|BIFD162-13|IMZB-BIF00601|Indonesia.Jawa Barat|Cyprinidae|BOLD:ACP6025
 Barbodes binotatus|BIFD691-13|IMZB-BIF01130|Indonesia.Jawa Tengah|Cyprinidae|BOLD:ACP6025
 Barbodes binotatus|BIFD685-13|IMZB-BIF01124|Indonesia.Jawa Tengah|Cyprinidae|BOLD:ACP6025
 Barbodes binotatus|BIFD686-13|IMZB-BIF01125|Indonesia.Jawa Tengah|Cyprinidae|BOLD:ACP6025
 Barbodes binotatus|BIFD2040-14|IMZB-BIF2480|Indonesia.Bali|Cyprinidae|BOLD:ACP5712
 Barbodes binotatus|BIFD2042-14|IMZB-BIF2482|Indonesia.Bali|Cyprinidae|BOLD:ACP5712
 Barbodes binotatus|BIFD1365-14|IMZB-BIF1804|Indonesia.Jawa Barat|Cyprinidae|BOLD:ACP5712
 Barbodes binotatus|BIFD468-13|IMZB-BIF00907|Indonesia.Jawa Tengah|Cyprinidae|BOLD:ACP5712
 Barbodes binotatus|BIFD2727-15|IMZB-BIF3606|Indonesia.Jawa Timur|Cyprinidae|BOLD:ACP5712
 Barbodes binotatus|BIFD1556-14|IMZB-BIF1995|Indonesia.Jawa Timur|Cyprinidae|BOLD:ACP5712
 Barbodes binotatus|BIFD1553-14|IMZB-BIF1992|Indonesia.Jawa Timur|Cyprinidae|BOLD:ACP5712
 Ctenopharyngodon idella|BIFD263-13|IMZB-BIF00702|Indonesia.Jawa Barat|Cyprinidae|BOLD:ACL1923
 Ctenopharyngodon idella|BIFD262-13|IMZB-BIF00701|Indonesia.Jawa Barat|Cyprinidae|BOLD:ACL1923
 Ctenopharyngodon idella|BIFD48-13|IMZB-BIF01287|Indonesia.Jawa Tengah|Cyprinidae|BOLD:ACL1923

Ctenopharyngodon idellaBIFD263-13IMZB-BIF00702Indonesia.Jawa Barat\CyprinidaeBOLD:ACL1923
 Ctenopharyngodon idellaBIFD262-13IMZB-BIF00701Indonesia.Jawa Barat\CyprinidaeBOLD:ACL1923
 Ctenopharyngodon idellaBIFD848-13IMZB-BIF01287Indonesia.Jawa Tengah\CyprinidaeBOLD:ACL1923
 Parachela hypophthalmusBIFD2874-15IMZB-BIF3754Indonesia.Jawa Timur\CyprinidaeBOLD:ACS9804
 Parachela hypophthalmusBIFD2766-15IMZB-BIF3646Indonesia.Jawa Timur\CyprinidaeBOLD:ACS9804
 Parachela hypophthalmusBIFD2768-15IMZB-BIF3648Indonesia.Jawa Timur\CyprinidaeBOLD:ACS9804
 Parachela hypophthalmusBIFD2875-15IMZB-BIF3755Indonesia.Jawa Timur\CyprinidaeBOLD:ACS9804
 Parachela hypophthalmusBIFD2767-15IMZB-BIF3647Indonesia.Jawa Timur\CyprinidaeBOLD:ACS9804
 Parachela hypophthalmusBIFD2873-15IMZB-BIF3753Indonesia.Jawa Timur\CyprinidaeBOLD:ACS9804
 Rasbora argyrotaeniaBIFD538-13IMZB-BIF00977Indonesia.Jawa Tengah\CyprinidaeBOLD:ACQ2593
 Rasbora argyrotaeniaBIFD364-13IMZB-BIF00803Indonesia.Jawa Barat\CyprinidaeBOLD:ACQ2593
 Rasbora argyrotaeniaBIFD016-13IMZB-BIF00455Indonesia.Jawa Barat\CyprinidaeBOLD:ACQ2593
 Rasbora argyrotaeniaBIFD2757-15IMZB-BIF3637Indonesia.Jawa Timur\CyprinidaeBOLD:ACQ2593
 Rasbora argyrotaeniaBIFD536-13IMZB-BIF00975Indonesia.Jawa Tengah\CyprinidaeBOLD:ACQ2593
 Rasbora aprotaeniaBIFD105-13IMZB-BIF00544Indonesia.Jawa Barat\CyprinidaeBOLD:ACS6707
 Rasbora aprotaeniaBIFD1104-14IMZB-BIF1543Indonesia.Banten\CyprinidaeBOLD:ACS6707
 Rasbora aprotaeniaBIFD042-13IMZB-BIF00481Indonesia.Jawa Barat\CyprinidaeBOLD:ACS6707
 Rasbora aprotaeniaBIFD1229-14IMZB-BIF1668Indonesia.Banten\CyprinidaeBOLD:ACS6707
 Rasbora aprotaeniaBIFD1227-14IMZB-BIF1666Indonesia.Banten\CyprinidaeBOLD:ACS6707
 Rasbora baliensisBIFD1662-14IMZB-BIF2101Indonesia.Jawa Timur\CyprinidaeBOLD:ACQ1407
 Rasbora baliensisBIFD1765-14IMZB-BIF2204Indonesia.Jawa Timur\CyprinidaeBOLD:ACQ1407
 Rasbora baliensisBIFD2124-14IMZB-BIF2564Indonesia.Bali\CyprinidaeBOLD:ACQ1407
 Rasbora baliensisBIFD1912-14IMZB-BIF2352Indonesia.Bali\CyprinidaeBOLD:ACQ1407
 Rasbora baliensisBIFD2200-14IMZB-BIF2640Indonesia.Bali\CyprinidaeBOLD:ACQ1407
 Rasbora baliensisBIFD1857-14IMZB-BIF2296Indonesia.Bali\CyprinidaeBOLD:ACQ1407
 Rasbora lateristriatalBIFD2605-15IMZB-BIF3484Indonesia.Jawa Tengah\CyprinidaeBOLD:ACQ7159
 Rasbora lateristriatalBIFD2636-15IMZB-BIF3515Indonesia.Jawa Tengah\CyprinidaeBOLD:ACQ7159
 Rasbora lateristriatalBIFD2635-15IMZB-BIF3514Indonesia.Jawa Tengah\CyprinidaeBOLD:ACQ7159
 Rasbora lateristriatalBIFD845-13IMZB-BIF01284Indonesia.Jawa Tengah\CyprinidaeBOLD:ACQ7159
 Rasbora lateristriatalBIFD1459-14IMZB-BIF1898Indonesia.Jawa Tengah\CyprinidaeBOLD:ACQ7160
 Rasbora lateristriatalBIFD1461-14IMZB-BIF1900Indonesia.Jawa Tengah\CyprinidaeBOLD:ACQ7160
 Rasbora lateristriatalBIFD2736-15IMZB-BIF3615Indonesia.Jawa Timur\CyprinidaeBOLD:ACQ7160
 Rasbora lateristriatalBIFD2739-15IMZB-BIF3618Indonesia.Jawa Timur\CyprinidaeBOLD:ACQ7160
 Leiongnathus striatusBIFB245-13IMZB-BIF00270Indonesia.Jawa Barat\LeiongnathidaeBOLD:ACB5552
 Oxyeleotris marmorataBIFB049-13IMZB-BIF00074Indonesia.Jawa Barat\EleotridaeBOLD:AAD7171
 Oxyeleotris marmorataBIFB045-13IMZB-BIF00070Indonesia.Jawa Barat\EleotridaeBOLD:AAD7171
 Oxyeleotris marmorataBIFB044-13IMZB-BIF00069Indonesia.Jawa Barat\EleotridaeBOLD:AAD7171
 Oxyeleotris marmorataBIFB046-13IMZB-BIF00071Indonesia.Jawa Barat\EleotridaeBOLD:AAD7171
 Oxyeleotris marmorataBIFB052-13IMZB-BIF00077Indonesia.Jawa Barat\EleotridaeBOLD:AAD7171
 Oxyeleotris marmorataBIFB048-13IMZB-BIF00073Indonesia.Jawa Barat\EleotridaeBOLD:AAD7171
 Oxyeleotris marmorataBIFD873-13IMZB-BIF01312Indonesia.Jawa Tengah\EleotridaeBOLD:AAD7171
 Oxyeleotris marmorataBIFB043-13IMZB-BIF00068Indonesia.Jawa Barat\EleotridaeBOLD:AAD7171
 Oxyeleotris marmorataBIFB047-13IMZB-BIF00072Indonesia.Jawa Barat\EleotridaeBOLD:AAD7171
 Oxyeleotris marmorataBIFB051-13IMZB-BIF00076Indonesia.Jawa Barat\EleotridaeBOLD:AAD7171
 Oxyeleotris marmorataBIFB050-13IMZB-BIF00075Indonesia.Jawa Barat\EleotridaeBOLD:AAD7171
 Platycephalus sp. 1BIFB295-13IMZB-BIF00320Indonesia.Jawa Barat\PlatycephalidaeBOLD:ACT2912
 Platycephalus sp. 1BIFB297-13IMZB-BIF00322Indonesia.Jawa Barat\PlatycephalidaeBOLD:ACT2912
 Platycephalus sp. 1BIFB296-13IMZB-BIF00321Indonesia.Jawa Barat\PlatycephalidaeBOLD:ACT2912
 Redigobius bikolanusBIFD1899-14IMZB-BIF2339Indonesia.BaliGobiidaeBOLD:ACQ3998
 Redigobius bikolanusBIFD1896-14IMZB-BIF2336Indonesia.BaliGobiidaeBOLD:ACQ3998
 Redigobius bikolanusBIFD1901-14IMZB-BIF2341Indonesia.BaliGobiidaeBOLD:ACQ3998
 Redigobius bikolanusBIFD1898-14IMZB-BIF2338Indonesia.BaliGobiidaeBOLD:ACQ3998
 Redigobius bikolanusBIFD1900-14IMZB-BIF2340Indonesia.BaliGobiidaeBOLD:ACQ3998
 Redigobius leptochilusBIFD2401-14IMZB-BIF2841Indonesia.BaliGobiidaeBOLD:ACQ3411
 Redigobius leptochilusBIFD2118-14IMZB-BIF2558Indonesia.BaliGobiidaeBOLD:ACQ3411
 Redigobius leptochilusBIFD2549-14IMZB-BIF2989Indonesia.BaliGobiidaeBOLD:ACQ3411
 Redigobius leptochilusBIFD2548-14IMZB-BIF2988Indonesia.BaliGobiidaeBOLD:ACQ3411
 Redigobius leptochilusBIFD2400-14IMZB-BIF2840Indonesia.BaliGobiidaeBOLD:ACQ3411
 Redigobius leptochilusBIFD2399-14IMZB-BIF2839Indonesia.BaliGobiidaeBOLD:ACQ3411
 Redigobius leptochilusBIFD2402-14IMZB-BIF2842Indonesia.BaliGobiidaeBOLD:ACQ3411
 Redigobius leptochilusBIFD2120-14IMZB-BIF2560Indonesia.BaliGobiidaeBOLD:ACQ3411
 Monopterus albusBIFD864-13IMZB-BIF01303Indonesia.Jawa Tengah\SynbranchidaeBOLD:AAF8880
 Monopterus albusBIFD855-13IMZB-BIF01294Indonesia.Jawa Tengah\SynbranchidaeBOLD:AAF8880
 Monopterus albusBIFB042-13IMZB-BIF00067Indonesia.Jawa Barat\SynbranchidaeBOLD:AAF8880
 Monopterus albusBIFD1404-14IMZB-BIF1843Indonesia.Jawa Tengah\SynbranchidaeBOLD:ACT5080
 Monopterus albusBIFD1403-14IMZB-BIF1842Indonesia.Jawa Tengah\SynbranchidaeBOLD:ACT5080
 Notopterus notopterusBIFD2805-15IMZB-BIF3685Indonesia.Jawa Timur\NotopteridaeBOLD:AAF2802
 Notopterus notopterusBIFD2806-15IMZB-BIF3686Indonesia.Jawa Timur\NotopteridaeBOLD:AAF2802
 Notopterus notopterusBIFD811-13IMZB-BIF01250Indonesia.Jawa Tengah\NotopteridaeBOLD:AAF2802
 Notopterus notopterusBIFD2807-15IMZB-BIF3687Indonesia.Jawa Timur\NotopteridaeBOLD:AAF2802
 Notopterus notopterusBIFD833-13IMZB-BIF01272Indonesia.Jawa Tengah\NotopteridaeBOLD:AAF2802
 Tetraodon barbataBIFB277-13IMZB-BIF00302Indonesia.Jawa Barat\TetraodontidaeBOLD:ACS9450
 Macrognathus aculeatusBIFD1721-14IMZB-BIF2160Indonesia.Jawa Timur\MastacembelidaeBOLD:ACG4100
 Macrognathus aculeatusBIFD2867-15IMZB-BIF3747Indonesia.Jawa Timur\MastacembelidaeBOLD:ACG4100
 Macrognathus aculeatusBIFD2866-15IMZB-BIF3746Indonesia.Jawa Timur\MastacembelidaeBOLD:ACG4100
 Macrognathus aculeatusBIFD1722-14IMZB-BIF2161Indonesia.Jawa Timur\MastacembelidaeBOLD:ACG4100
 Macrognathus maculatusBIFD064-13IMZB-BIF00503Indonesia.Jawa Barat\MastacembelidaeBOLD:ACT1650
 Macrognathus maculatusBIFD063-13IMZB-BIF00502Indonesia.Jawa Barat\MastacembelidaeBOLD:ACT1650
 Macrognathus maculatusBIFB096-13IMZB-BIF00121Indonesia.Jawa Barat\MastacembelidaeBOLD:ACT1890
 Macrognathus maculatusBIFB095-13IMZB-BIF00120Indonesia.Jawa Barat\MastacembelidaeBOLD:ACT1890
 Macrognathus maculatusBIFB119-13IMZB-BIF00144Indonesia.Jawa Barat\MastacembelidaeBOLD:ACT1890
 Macrognathus maculatusBIFD412-13IMZB-BIF00851Indonesia.Jawa Tengah\MastacembelidaeBOLD:ACT1648
 Macrognathus maculatusBIFD413-13IMZB-BIF00852Indonesia.Jawa Tengah\MastacembelidaeBOLD:ACT1648
 Macrognathus maculatusBIFD2658-15IMZB-BIF3537Indonesia.Jawa Tengah\MastacembelidaeBOLD:ACT1649
 Macrognathus maculatusBIFD2659-15IMZB-BIF3538Indonesia.Jawa Tengah\MastacembelidaeBOLD:ACT1649
 Mastacembelus unicolorBIFD308-13IMZB-BIF00747Indonesia.Jawa Barat\MastacembelidaeBOLD:ABX2314
 Mastacembelus unicolorBIFD310-13IMZB-BIF00749Indonesia.Jawa Barat\MastacembelidaeBOLD:ABX2314
 Mastacembelus unicolorBIFD309-13IMZB-BIF00748Indonesia.Jawa Barat\MastacembelidaeBOLD:ABX2314
 Mastacembelus unicolorBIFD311-13IMZB-BIF00750Indonesia.Jawa Barat\MastacembelidaeBOLD:ABX2314
 Mastacembelus unicolorBIFD312-13IMZB-BIF00751Indonesia.Jawa Barat\MastacembelidaeBOLD:ABX2314
 Osphronemus goramyBIFD250-13IMZB-BIF00689Indonesia.Jawa Barat\OsphronemidaeBOLD:ACT3430
 Osphronemus goramyBIFD247-13IMZB-BIF00686Indonesia.Jawa Barat\OsphronemidaeBOLD:ACT3430
 Osphronemus goramyBIFD249-13IMZB-BIF00688Indonesia.Jawa Barat\OsphronemidaeBOLD:ACT3430
 Osphronemus goramyBIFD248-13IMZB-BIF00687Indonesia.Jawa Barat\OsphronemidaeBOLD:ACT3430
 Trichopodus pectoralisBIFD821-13IMZB-BIF01260Indonesia.Jawa Tengah\OsphronemidaeBOLD:AAE8555
 Trichopodus pectoralisBIFD822-13IMZB-BIF01261Indonesia.Jawa Tengah\OsphronemidaeBOLD:AAE8555
 Trichopodus pectoralisBIFD823-13IMZB-BIF01262Indonesia.Jawa Tengah\OsphronemidaeBOLD:AAE8555
 Trichopodus pectoralisBIFD238-13IMZB-BIF00677Indonesia.Jawa Barat\OsphronemidaeBOLD:AAE8555

