

Introduction

The National Health and Nutrition Examination Survey (NHANES) provides biometric and chemical exposure biomonitoring data that are statistically representative of the modern U.S. population.

High-throughput toxicokinetics (HTTK) R package is open-source software which includes several toxicological models and supporting data.

We are working to update the chemical exposure rates that can be inferred from the NHANES biomonitoring data. Previously these inferences included only semi-volatile and non-volatile chemicals. Here, we are developing methods for volatile chemicals.

HTTK-pop Monte Carlo (MC) simulator draws from the NHANES biometrics to simulate toxicokinetic variability but utilizes data only up to the 2011-12 NHANES cohort.

We updated HTTK-pop MC by obtaining the most recently available NHANES biometrics, up to the 2017-18 NHANES cohort.

We examined steady-state human exposure rates for the median and upper 95th percentile of the U.S. population inferred using reverse dosimetry from the NHANES chemical exposure biomarker data in blood and plasma.

We also expanded the HTTK reverse dosimetry beyond oral exposures using the recently added generic inhalation Physiologically Based Toxicokinetic (PBTK) model by finding a steady-state solution.

HTTK Inhalation Model Plasma Steady-State Solution

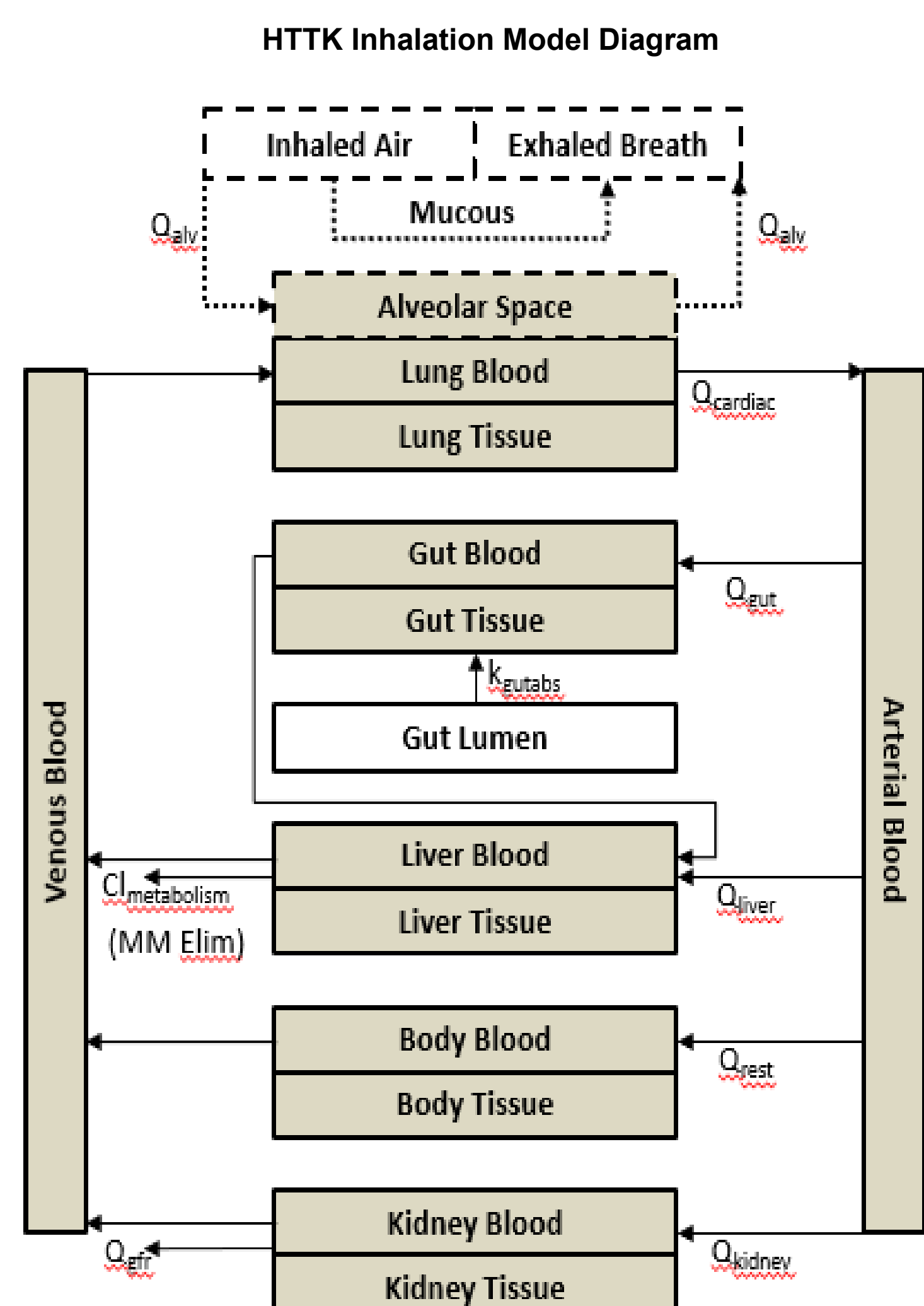


Figure 1. Representation of HTTK PBTK model structure with added gas inhalation/exhalation component (dotted lines). Blood flow rates represented with Q , tissue compartments and associated blood supplies represented with rectangles. Some chemical is cleared from the system through liver metabolism and glomerular filtration.

The HTTK-pop MC human variability simulator (Ring et al., 2017) uses a steady-state solution to a PBPK model to allow MC simulation. In this case, we had to derive a new steady-state solution for the Linakis et al. (2020) HTTK inhalation PBTK model.

Comparison of analytic plasma steady-state solution and average model estimates

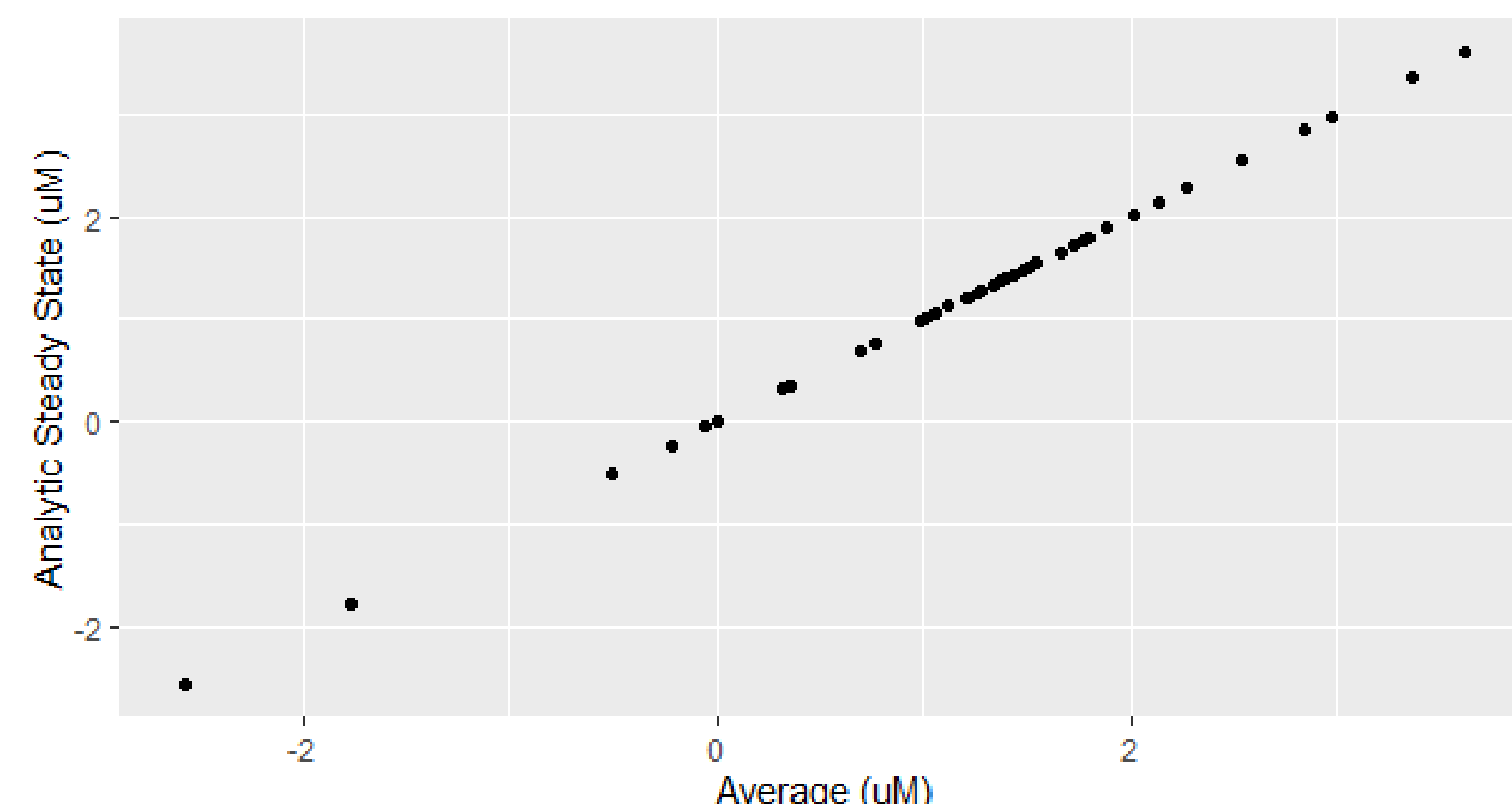


Figure 2. Log-transformed plasma analytic steady-state solution vs. average model estimates for 41 chemicals.

Analytic Steady-State Solution for Plasma Concentration: $C_{ss_ven} / R_{blood2plasma}$

$$C_{ss_ven} = \frac{C_{inh} \cdot R_{blood2air} \cdot (k_{urt} \cdot Q_{gfr} \cdot Q_{gut} \cdot Q_{liver} \cdot Q_{kidney} \cdot Q_{rest} \cdot Q_{ent})}{k_{urt} \cdot Q_{gfr} \cdot Q_{gut} \cdot Q_{liver} \cdot Q_{kidney} \cdot Q_{rest} \cdot Q_{ent} + k_{urt} \cdot Q_{gfr} \cdot Q_{gut} \cdot Q_{liver} \cdot Q_{kidney} \cdot Q_{rest} \cdot Q_{ent} + k_{urt} \cdot Q_{gfr} \cdot Q_{gut} \cdot Q_{liver} \cdot Q_{kidney} \cdot Q_{rest} \cdot Q_{ent} + \dots}$$

(Note: The equation above is a simplified representation of the complex formula provided in the image.)

Results

NHANES biometrics and HTTK-pop MC simulator

	Total	Male		Female		Adults		Youth		
		Median	Mean	Median	Mean	Median	Mean	Median	Mean	
Weight (kg)										
NHANES 2007-2012	67.6	64.2	73	67.5	63	60.9	79	82	30.8	37.7
NHANES 2013-2018	67.8	65.2	72.9	68.2	63.5	62.4	79.2	82.7	32.2	38.8
Height (cm)										
NHANES 2007-2012	163	158	171	162	159	153	167	168	143	140
NHANES 2013-2018	162	157	170	162	158	153	166	167	144	140

Table 1. Comparison of mean/median weight and height of the previous cohort (2007-12 NHANES cohort) and updated cohort (2013-18 NHANES cohort) for five subgroups: Total, Male, Female, Adults (age 20+ years old), and Youth (age 2-19 years old).

The HTTK-pop MC human variability simulator replicates the correlation structure indicated by the NHANES.

NHANES organic chemical half-life

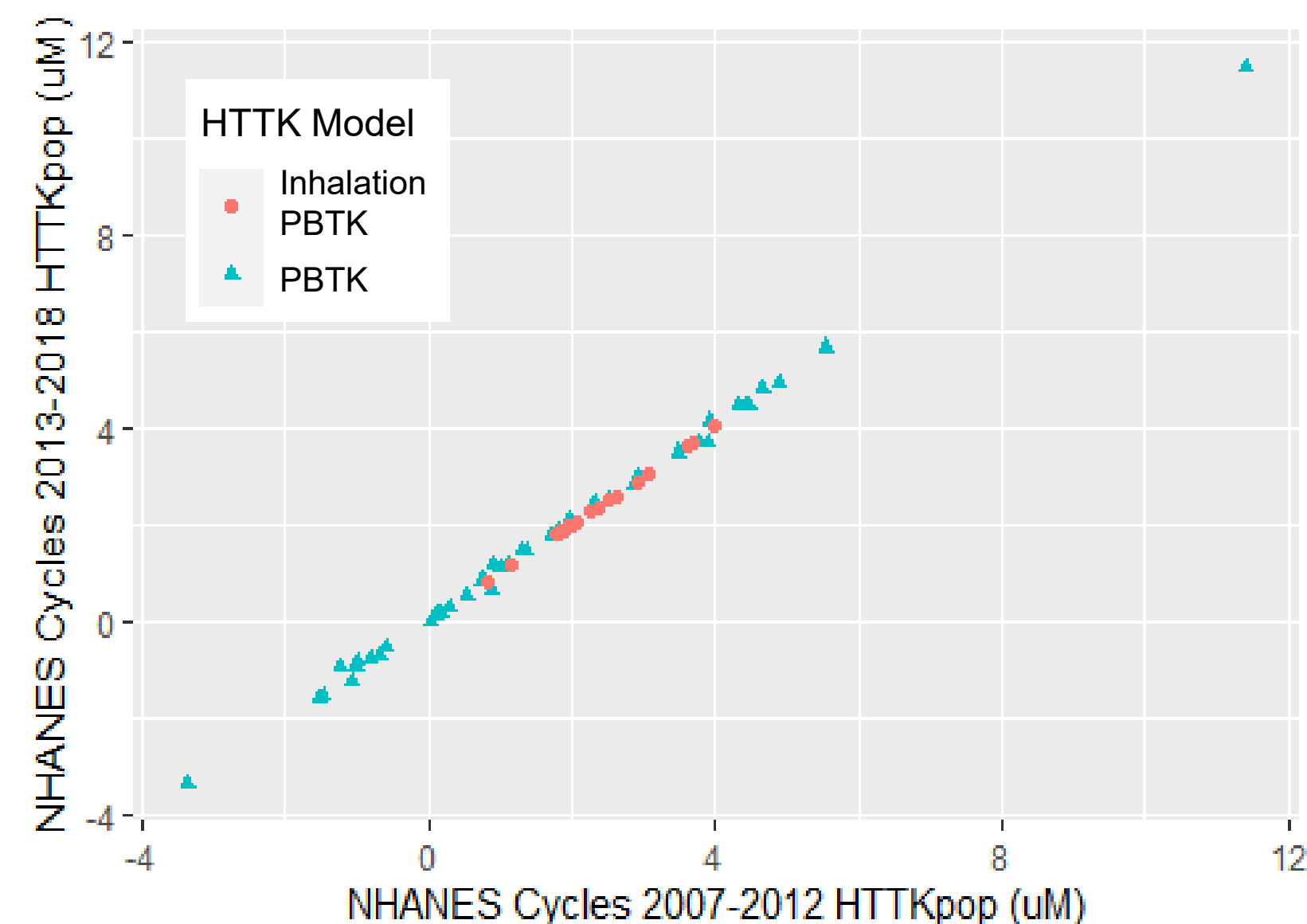


Figure 3. Log-transformed MC steady-state plasma concentration using the previous cohort (2007-12 NHANES cohort) versus updated cohort (2013-18 NHANES cohort) for 19 chemicals with the HTTK inhalation PBTK model and 44 chemicals with the HTTK PBTK model.

NHANES organic chemical half-life

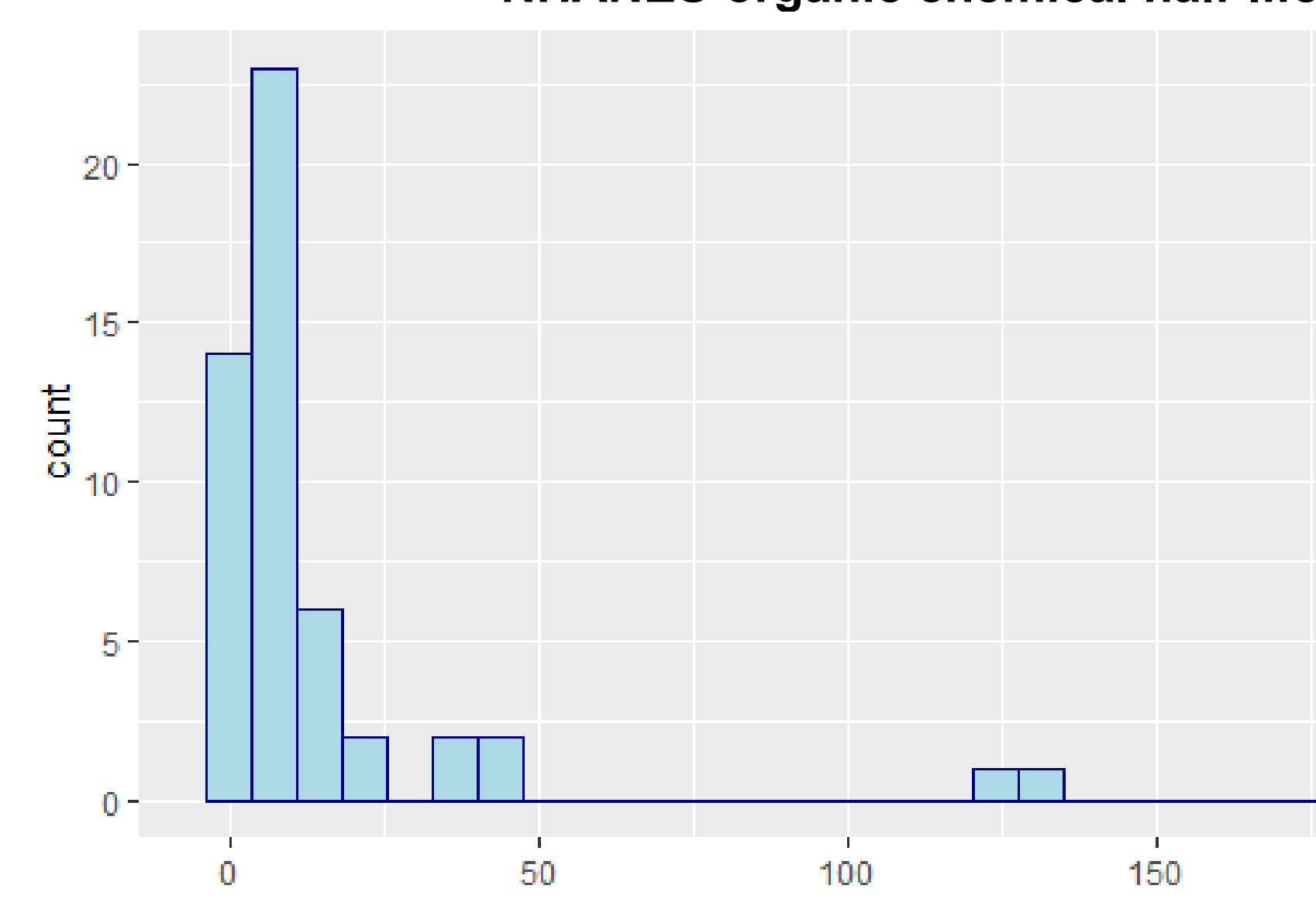


Figure 4. Histogram of QSAR model estimated elimination half-life for 52 chemicals. We had one outlier with half-life of 6793.24 hour (Hexachloroethane) which was omitted in the histogram.

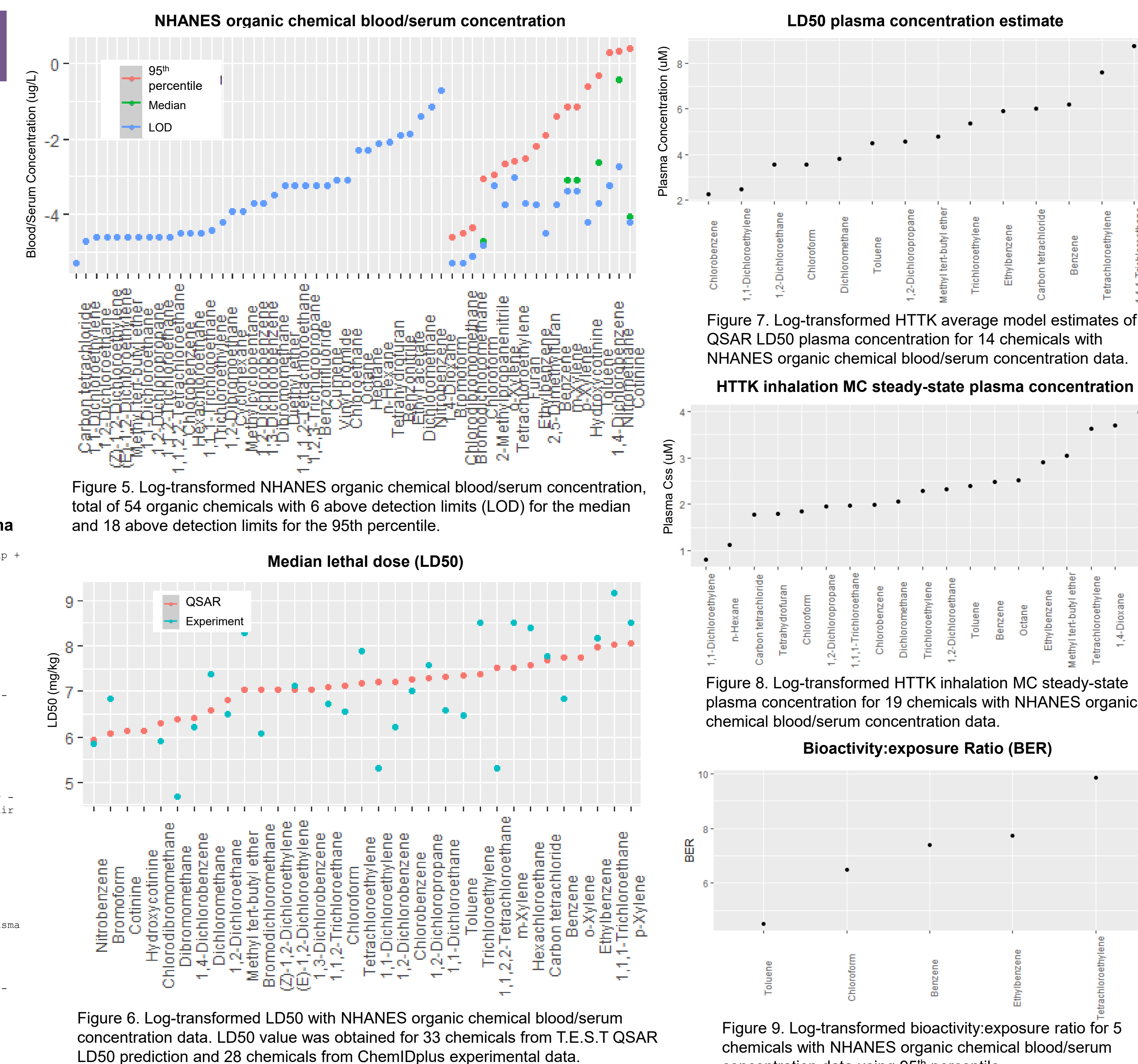


Figure 5. Log-transformed NHANES organic chemical blood/serum concentration, total of 54 organic chemicals with 6 above detection limits (LOD) for the median and 18 above detection limits for the 95th percentile.

Figure 6. Log-transformed LD50 with NHANES organic chemical blood/serum concentration data. LD50 value was obtained for 33 chemicals from T.E.S.T QSAR LD50 prediction and 28 chemicals from ChemIDplus experimental data.

Figure 7. Log-transformed HTTK average model estimates of QSAR LD50 plasma concentration for 14 chemicals with NHANES organic chemical blood/serum concentration data.

Figure 8. Log-transformed HTTK inhalation MC steady-state plasma concentration for 19 chemicals with NHANES organic chemical blood/serum concentration data.

Figure 9. Log-transformed bioactivity:exposure ratio for 5 chemicals with NHANES organic chemical blood/serum concentration data using 95th percentile.

Conclusions

- Comparison of previous cohort (2007-12 NHANES cohort) and updated cohort (2013-18 NHANES cohort) indicates some increase in mean and median body weights for the updated cohort with no change or a slight decrease in body heights.
- Inclusion of volatile chemicals is a key improvement over previous efforts as they have previously not been addressed with a BER approach.
- By placing volatile chemicals into context with semi- and non-volatile chemicals, priorities might be better identified.

References

- Pearce, Robert G., et al. "Htk: R package for high-throughput toxicokinetics." *Journal of Statistical Software* 79.4 (2017a): 1.
- Ring, Caroline L., et al. "Identifying populations sensitive to environmental chemicals by simulating toxicokinetic variability." *Environmental International* 106 (2017): 105-118.
- Ring, Caroline L., et al. "Consensus modeling of median chemical intake for the US population based on predictions of exposure pathways." *Environmental Science & Technology* 53.2 (2018): 719-732.
- Linakis, Matthew W., et al. "Development and evaluation of a high-throughput inhalation model for organic chemicals." *J. Expo Sci. Environ. Epidemiol.* (2020). DOI:10.1038/s41370-020-0248-9.
- Arnot, Jon A., et al. "Estimating screening-level organic chemical half-lives in humans." *Environmental Science & Technology* 48.1 (2014): 723-730.
- Wambaugh, John F., et al. "High throughput heuristics for prioritizing human exposure to environmental chemicals." *Environmental Science & Technology* 48.21 (2014): 12760-12767.