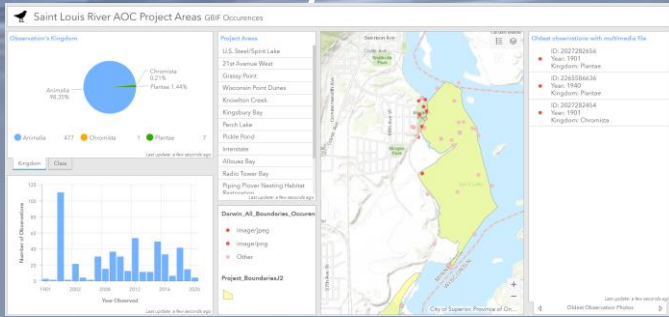


Utilizing Digital Dashboards to Visualize Geospatial Data in the Saint Louis River Area of Concern

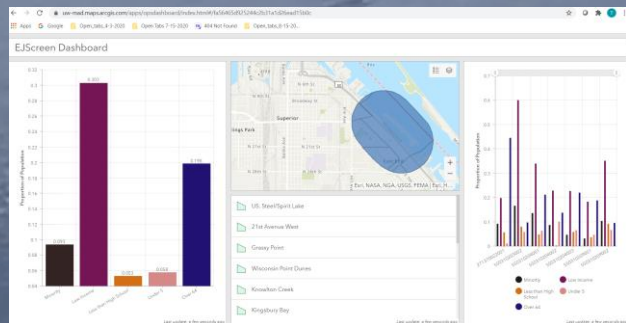
Tom Hollenhorst, US EPA Great Lakes Toxicology and Ecology Division
Claire Finucane, University of Wisconsin Madison

Biodiversity



<https://tinyurl.com/3ffvxjjo>

Enviro Atlas & EJ Screen



<https://tinyurl.com/a2p1pe22>

<https://tinyurl.com/ypxkhko7>

Using ESRI Dashboards to Display Geospatial Data

Claire Finucane

The Saint Louis River Area of Concern (AOC) has multiple project areas that are undergoing either sediment remediation, aquatic habitat restoration, or both. We developed and explored the use of digital dashboards to assess these project areas and collected them together here as a story map. Click here to view:

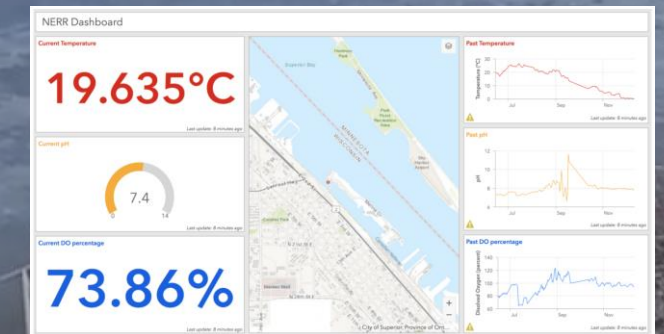
<https://arcg.is/1v8aXD>

Contaminants



<https://tinyurl.com/yyo6wzra>

Real Time Continuous Data



The contents of this abstract neither constitute nor necessarily reflect US EPA policy