

In Vitro Bioactivity in ToxCast™ Assays for Fruit and Vegetable Juices

B.A. Wetmore¹, M.B. Black¹, E.L. Berg², M.A. Polokoff², K.A. Houck³, R.S. Judson³, R.S. Thomas³, and M.E. Andersen¹

¹The Hamner Institutes for Health Sciences, RTP, NC; ²BioSeek, a division of DiscoveRx, Inc., S. San Francisco, CA; ³Office of Research and Development, US EPA, RTP, NC

Abstract

The ToxCast and Tox21 programs have generated *in vitro* screening data for over 1000 chemicals to aid in hazard identification and setting chemical testing priorities. These data, together with high-throughput pharmacokinetic data, are used to infer possible toxic responses and external concentrations required to elicit these effects. There is only limited experience in evaluating dose-response for natural products in these assays. In this study, juices were extracted from 30 organically grown fruits and vegetables. These juices were screened in concentration-response format across primary human cell and co-culture assays (BioMAP systems) to assess similarities of pathway responses of the extracts with those of database compounds. Bioactivities noted with unpeeled potato juice were immunomodulatory and tissue remodeling activities across endothelial, peripheral blood mononuclear and fibroblast cells. This pattern of response was similar to quercetin, a plant-derived flavonoid. Broccoli juice initiated anti-proliferative effects on endothelial, fibroblast and smooth muscle cells with significant similarity to mitomycin C (374 ng/mL; Pearson, r=0.806) and the fungicide mancozeb (40 µM; Pearson, r=0.776). To relate *in vitro* concentrations to administered dose, the filtered juice yield per g item was used with the plasma volume of a 70kg adult to approximate % juice present in systemic circulation after eating. This value was used as a surrogate for target tissue concentration. The activity described for broccoli was elicited at 0.5%, the amount of juice anticipated in the circulation following consumption of 2 cups of broccoli. Importantly, the bioactivities noted do not necessarily lead to adverse effects. These data provide context for assessing the *in vivo* relevance of *in vitro* concentration-response and bioactivity data generated in ToxCast and similar screening programs. *This abstract does not necessarily reflect EPA policy.*

Background

- ToxCast HT screening data have been generated for >1000 chemicals to aid in hazard identification.
- Many of these assays probe biological and therapeutic activities that span multiple processes and pathways.
- Evaluation of natural products in these systems may aid in 1) ToxCast data interpretation and 2) relating *in vitro* bioactivity to external exposure.

Experimental Design

- Fruit and vegetable juices were prepared from 30 organically grown items.
- Juices were assessed for osmolality, pH and presence of pesticide residues, heavy metals and mycotoxins.
- Juices were screened in BioMAP Predictive Tox Panel; activity profiles were compared against ToxCast Phase I and BioMAP reference compounds.

Fruits and Vegetables Assessed

Test Material	Activity Reported ^a	Test Material	Activity Reported
Bean Sprouts	<Cytotoxicity; +Chromosomal Abs (+/-S9); +/-Limb bud; +ER activation	Green Beans	+++Cytotoxicity
Beets, Red	+++Cytotoxicity	Spinach	++Cytotoxicity; -Chromosomal Abs (+/-S9); +/-Limb bud; +ER activation
Broccoli	+++Cytotoxicity; +Chromosomal Abs (+/-S9); +/-Limb bud; +ER activation	Kale	NT in Charles et al.
Carrots	<Cytotoxicity; Chromosomal Abs (+/-S9); -Limb bud; +ER activation	Cabbage	++Cytotoxicity; +Chromosomal Abs(-S9)
Cauliflower	<Cytotoxicity	Peppers, Red bell	+++Cytotoxicity
Celery	++Cytotoxicity	Onions, Vidalia	++Cytotoxicity
Garlic	<Cytotoxicity	Parsley	+Cytotoxicity; non-monotonic proliferation below cytotoxicity
Ginger	+++Cytotoxicity	Snow peas	+Cytotoxicity; non-monotonic proliferation below cytotoxicity
Potatoes, peeled	NT in Charles et al.	Tomatoes, Red	<Cytotoxicity
Potatoes, unpeeled	Developmental toxicity (Renwick et al.)	Apples	NT in Charles et al.
Soybeans	<Cytotoxicity; Non-monotonic proliferation below cytotoxicity; +Chromosomal Abs (+/-S9); +/-Limb bud; +ER activation	Blueberries	NT in Charles et al.
Edamame	NT in Charles et al.	Grapefruit	+Cytotoxicity
Sweet Potatoes	++Cytotoxicity; Non-monotonic proliferation below cytotoxicity	Grapes, Green	<Cytotoxicity; +ER activation
		Orange	+Cytotoxicity
		Pineapple	++Cytotoxicity; non-monotonic proliferation below cytotoxicity
		Strawberries	<Cytotoxicity; non-monotonic proliferation below cytotoxicity

^aAs reported in Charles et al., 2002. Food Chem. Toxicol., 40:1391-1402; Renwick et al., 1994. Toxicol., 30:371-381.

Experimental Design

BioMAP Diversity 8 Panel

BioMAP System	3C	4H	LPS	Sag	BESC	CASMIC	HDF3CGF	KF3CT
Primary Human Cell Types	Human endothelial cells	Human umbilical vein	Human peripheral blood mononuclear cells	Human gingival fibroblasts	Human epidermal keratinocytes	Human gingival fibroblasts	Human dermal fibroblasts	Human keratinocytes
Stimuli	4-1β-TNF+α	Lipid A	TNF	TNF	4-1β-TNF+α	4-1β-TNF+α	4-1β-TNF+α	4-1β-TNF+α
R of Endpoints	7	7	7	7	7	7	7	7
Assay Information	Endothelial Cell Proliferation	Endothelial Cell Proliferation	Endothelial Cell Proliferation	Endothelial Cell Proliferation	Endothelial Cell Proliferation	Endothelial Cell Proliferation	Endothelial Cell Proliferation	Endothelial Cell Proliferation
Classical Information	COX-2, G-CSF, MCP-1, SREBP1	COX-2, G-CSF, MCP-1, SREBP1	VEGF, MCP-1, SREBP1	MCP-1, G-CSF, SREBP1	VEGF, MCP-1, SREBP1	VEGF, MCP-1, SREBP1	VEGF, MCP-1, SREBP1	MCP-1, G-CSF, SREBP1
Immune Responses	HLA-DP	HLA-DP	COX-2, MCP-1	COX-2, MCP-1	HLA-DP	HLA-DP	HLA-DP	MCP-1
Tissue Remodeling	NO, TNF, VEGF, SREBP1	NO, TNF, VEGF, SREBP1	NO, TNF, VEGF, SREBP1	NO, TNF, VEGF, SREBP1	NO, TNF, VEGF, SREBP1	NO, TNF, VEGF, SREBP1	NO, TNF, VEGF, SREBP1	NO, TNF, VEGF, SREBP1
Vascular Biology	NO, TNF, VEGF, SREBP1	NO, TNF, VEGF, SREBP1	NO, TNF, VEGF, SREBP1	NO, TNF, VEGF, SREBP1	NO, TNF, VEGF, SREBP1	NO, TNF, VEGF, SREBP1	NO, TNF, VEGF, SREBP1	NO, TNF, VEGF, SREBP1
Disease / Tissue Relevance	Cardiovascular Disease, Cancer	Cardiovascular Disease, Cancer	Cardiovascular Disease, Cancer	Cardiovascular Disease, Cancer	Cardiovascular Disease, Cancer	Cardiovascular Disease, Cancer	Cardiovascular Disease, Cancer	Cardiovascular Disease, Cancer

Relating *In Vitro* Concentrations to External Dose Given:

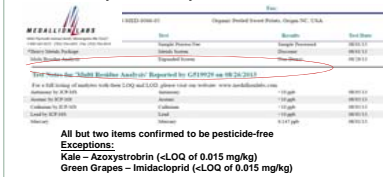
- A 75 kg adult has 5 L total blood
- Plasma comprises 55% of the total blood volume...
 - Juice would be present in a total blood volume of 2.75L plasma.
 - 12.5% juice in systemic circulation = 344 mL / 2.75 L
 - 4.17% juice = 114 mL
 - 1.39% juice = 44.8 mL
 - 0.46% juice = 12.75 mL

Relating to vegetable consumption...

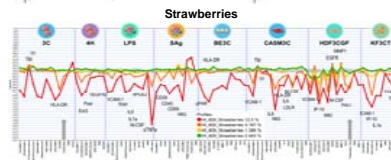
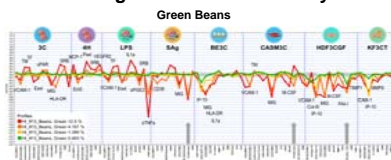
- 1g broccoli yields 85 µL juice.
- 150g = 12.75 mL juice → 0.46% concentration

Results

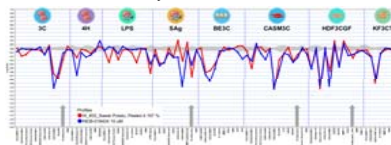
Pesticide, Heavy Metal and Mycotoxin Assessment of Produce



Fruit and Vegetable BioMAP Activity Profiles

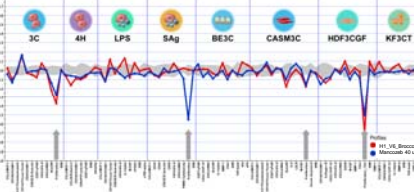


Sweet Potato Activity Similar to JAK 1/2 Kinase Inhibitor



Results

Broccoli Activity Profile Similar to Fungicide Mancozeb (Pearson r > 0.7)



Unsupervised Similarity Search Database Hits (Pearson >0.7)

Test Agent	Hit	Hit Information
Broccoli (0.46%)	Mitomycin C (370 ng/mL)	alkylating agent, DNA cross-linker
Broccoli (0.46%)	Mancozeb (40 µM)	Fungicide; anti-proliferative effects in multiple cell types
Red Beets (0.46%)	Tannic acid (4.1 µM)	polyphenol, component in anti-allergen sprays
Kale (1.39%)	ZM449829 (3.3 µM)	JAK3 inhibitor tool compound binds to ATP site on enzyme
Sweet Potatoes (4.17%)	INCB-018424 (10 µM)	Ruxolitinib, JAK 1/2 kinase inhibitor; Phase III trial, myelofibrosis
Unpeeled Potatoes (4.17%)	Quercetin (22.22 µM)	plant-derived flavonoid found in fruits, vegetables, leaves, grains
Unpeeled Potatoes (4.17%)	Fuocidin (7 ng/mL)	sulfated polysaccharide in brown algae/seaweed; dietary supplement
Unpeeled Potatoes (4.17%)	ODN2395 (1 µM)	synthetic oligonucleotides with TLR 9 activity (immunostimulatory)

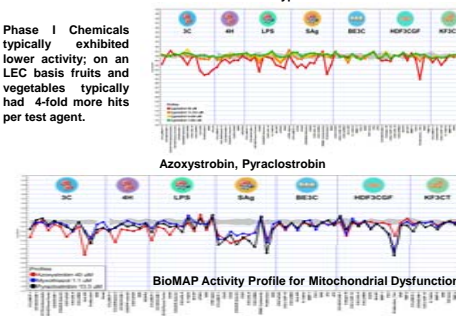
Mechanistic Hits Using BioSeek SVM Model Prediction Tool

Test Agent	Mechanism
Butenafol Squash (12.5%)	HDAC (1.11 µM)
Steamed Edamame (12.5%)	HDAC (1.11 µM)
Sweet Potatoes (4.17%)	JAK Inhibitor (1.11 µM)

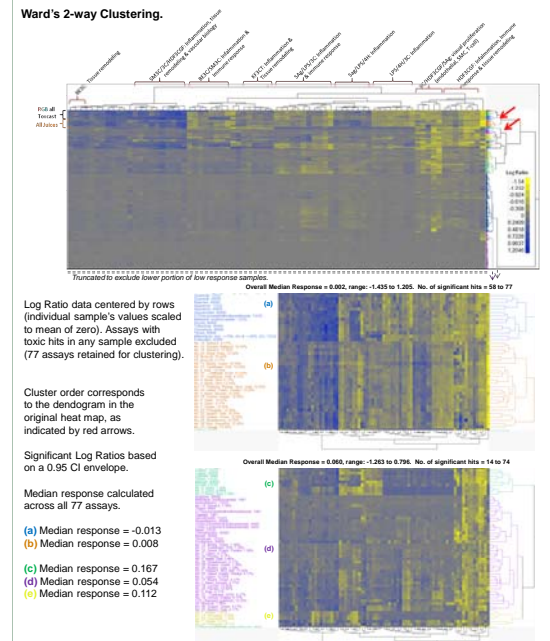
Comparing Apples to Azoxystrobin...

Test Agent	Minimum Concentration >10% LEC hits	Oral Equivalent (OE) mg/kg/day	Maximal Pesticide Exposure (mg/kg produce)	Kg Produce Consumed to Achieve OE / Minimum Concentration
Azoxystrobin	13.3 µM (9)	6.38	479	9.0
Cyprodinil	40 µM (20)	0.08	6	2.2
Fludioxonil	13.3 µM (15)	0.18	14	3.1
Pyraclastrobin	1.48 µM (29)	0.29	22	8.0
Apples	0.463% (28)		NA	0.059 (0.5 cups)
Green Beans	0.463% (21)		NA	0.083 (0.8 cups)
Spinach	0.463% (25)		NA	0.177 (1.8 cups)
Blueberries	0.463% (16)		NA	0.122 (0.8 cups)

ToxCast Phase I Chemical Activities in BioMAP Cyprodinil



Clustering of Fruit, Vegetable, and Phase I Chemical BioMAP Activities Distinct groupings revealed, but some similarities exist



Summary & Conclusions

- Fruit and vegetable juices elicited extensive bioactivities across the BioMAP Diversity 8 Panel.
- When compared to Phase I chemicals, the produce elicited ~4-fold more LEC hits per test agent.
- Clustering revealed that while chemicals and produce typically grouped with their own, similarities in activity were also identified (clades c and d).
- The ability to relate external exposures to internal concentrations for produce and ToxCast chemicals provides critical context.

Acknowledgments

- Funding for research performed at The Hamner Institutes for Health Sciences was provided by the American Chemistry Council's Long Range Research Initiative.
- The Hamner Institutes thank the ILSI Technical Committee on Food and Chemical Safety for funding the multi-residue pesticide screen and the heavy metal and mycotoxin analyses on the fruits and vegetables.