

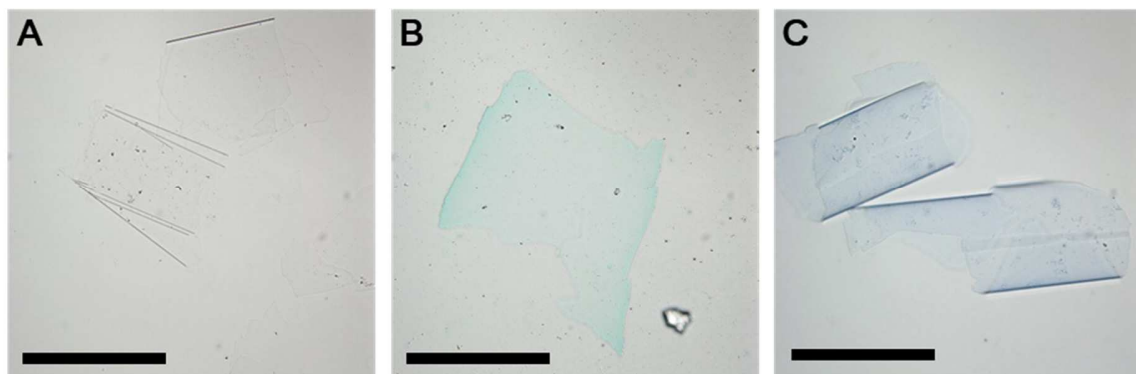
Supplementary Material

Aggregate Formation during the Viral Lysis of a Marine Diatom

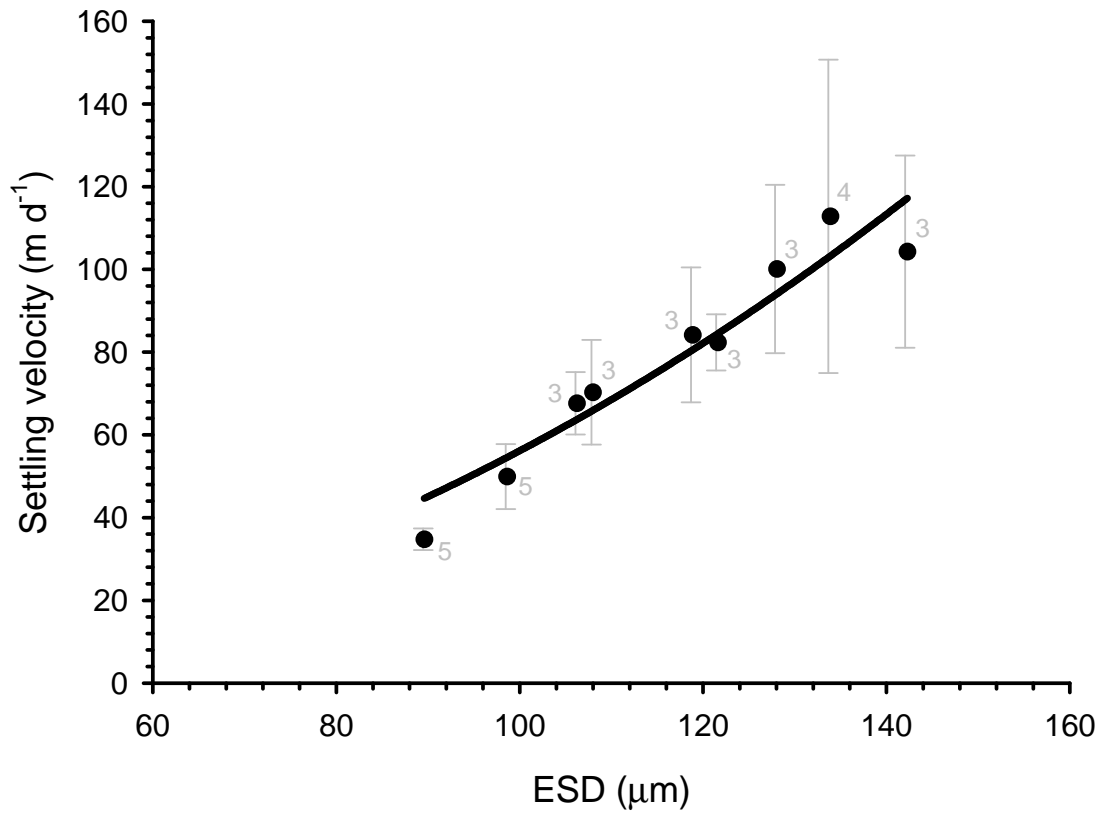
Yosuke Yamada*, Yuji Tomaru, Hideki Fukuda, Toshi Nagata

* **Correspondence:** Corresponding Author: yoyamada@ucsd.edu

Supplementary Figures



Supplementary Figure S1. Transmission light microscopic images of flakes collected on day 15. Scale bar = 500 μm . (A) Without staining; (B) after Alcian Blue staining; (C) after Coomassie Brilliant Blue staining.



Supplementary Figure S2. Relationship between the settling velocity and equivalent spherical diameter (ESD) of flakes collected on day 18. The value associated with each plot indicates the number of flakes examined. Error bars are SDs. The line indicates the power regression. Settling velocity = $2632 (\pm 1174) \times (\text{ESD})^{2.09 (\pm 0.27)}$ ($r^2 = 0.90$, $p < 0.001$, $n = 9$)