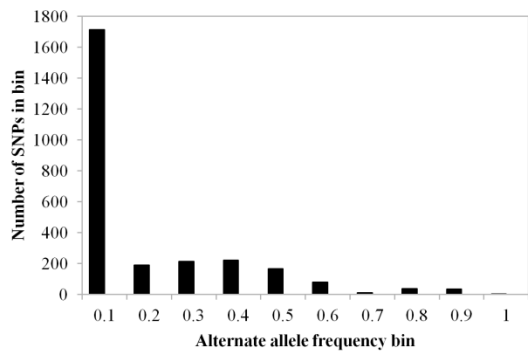
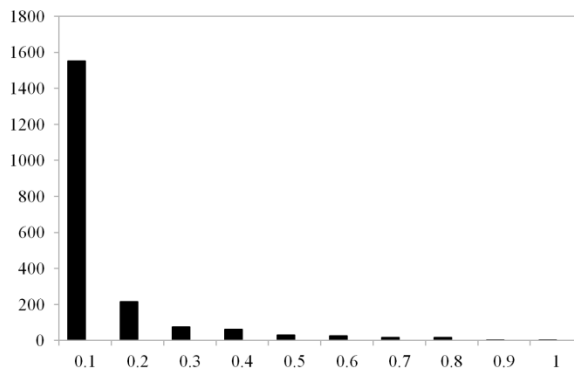


Figure S2. Chloroplast SNP alternate allele frequency histograms, with alternate allele frequency on the X axis and number of SNPS with a given alternate allele frequency on the Y axis, for pooled chestnut samples from southern (Yunnan, Guizhou) and northern (Hebei) China. An alternate chloroplast occurs at high frequency in the Hebei sample, while the reference chloroplast dominates one Yunnan sample and several haplotypes may be present in the Yunnan-Fengqing County sample.

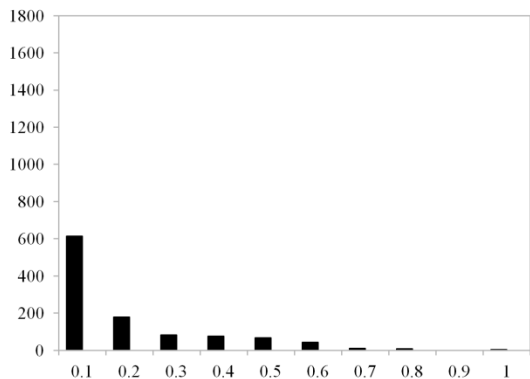
Shaanxi: Heihe and Zhuque Forest



Shaanxi: Orchard



Shaanxi: Liuba County Forest



Shaanxi: Ningshan County Forest

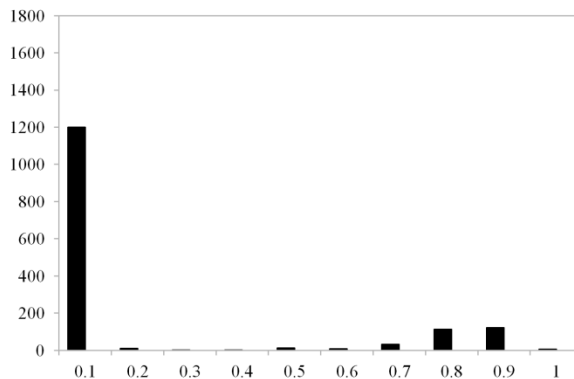


Figure S3. Chloroplast SNP alternate allele frequency histograms, with alternate allele frequency on the X axis and number of SNPs with a given alternate allele frequency on the Y axis, for pooled chestnut samples from Shaanxi Province in northwestern China. At least two haplotypes (peaks at frequency = 0.4 and = 0.8) are evident in the Heihe/Zhuque forest sample.