

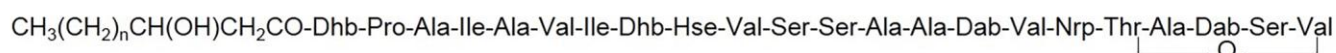
Supplementary Material

***In silico* and Genetic Analyses of Cyclic Lipopeptide Synthetic Gene Clusters in *Pseudomonas* sp. 11K1**

Hui Zhao¹, Yan-Ping Liu^{1,2}, Li-Qun Zhang^{1*}

*Corresponding author, e-mail address: zhanglq@cau.edu.cn

Supplementary Figure



Nrp	n	N (n+4)
Dhb	7.14	11.14
Thr	5.85	9.85
Ala	8.00	12.00

FIGURE S7 | The predicted structure of braspeptin. Calculation of n was based on estimated amino acid structures and MALDI-TOF molecular weight of braspeptin, and the characteristics of tolaasin group CLPs. N means carbon atom number of fatty acid tail. The uncertain amino acid (Nrp) was replaced with the most likely amino acids (Dhb, Thr and Ala). Non-standard amino acids are abbreviated as follows: Dab, 2,4-diaminobutyric acid; Dhb, dehydrobutyrine; Hse, homoserine.