

Transcriptome and proteome response of *Rhipicephalus annulatus* tick vector to *Babesia bigemina* infection

Sandra Antunes^{1*}, Joana Couto¹, Joana Ferrolho¹, Gustavo Seron Sanches¹, José Octavio Merino Charrez², Ned de la Cruz-Hernández², Monica Mazuz³ Margarita Villar⁴, Varda Shkap³, José de la Fuente^{4,5}, Ana Domingos¹

¹GHMT - Global Health and Tropical Medicine, Instituto de Higiene e Medicina Tropical - IHMT, Universidade Nova de Lisboa – UNL, Rua da Junqueira 100, 1349-008 Lisboa, Portugal.

²Facultad de Medicina Veterinaria y Zootecnia, Universidad Autónoma de Tamaulipas, Km. 5 carretera Victoria-Mante, CP 87000 Ciudad Victoria, Tamaulipas, Mexico.

³Kimron Veterinary Institute, P.O. Box 12, Bet Dagan, 50250, Israel. Instituto de.

⁴SaBio. Instituto de Investigación en Recursos Cinegéticos IREC, CSIC-UCLM-JCCM, Ronda de Toledo s/n, 13005 Ciudad Real, Spain.

⁵Department of Veterinary Pathobiology, Center for Veterinary Health Sciences, Oklahoma State University, Stillwater, OK 74078, USA.

*** Correspondence:**

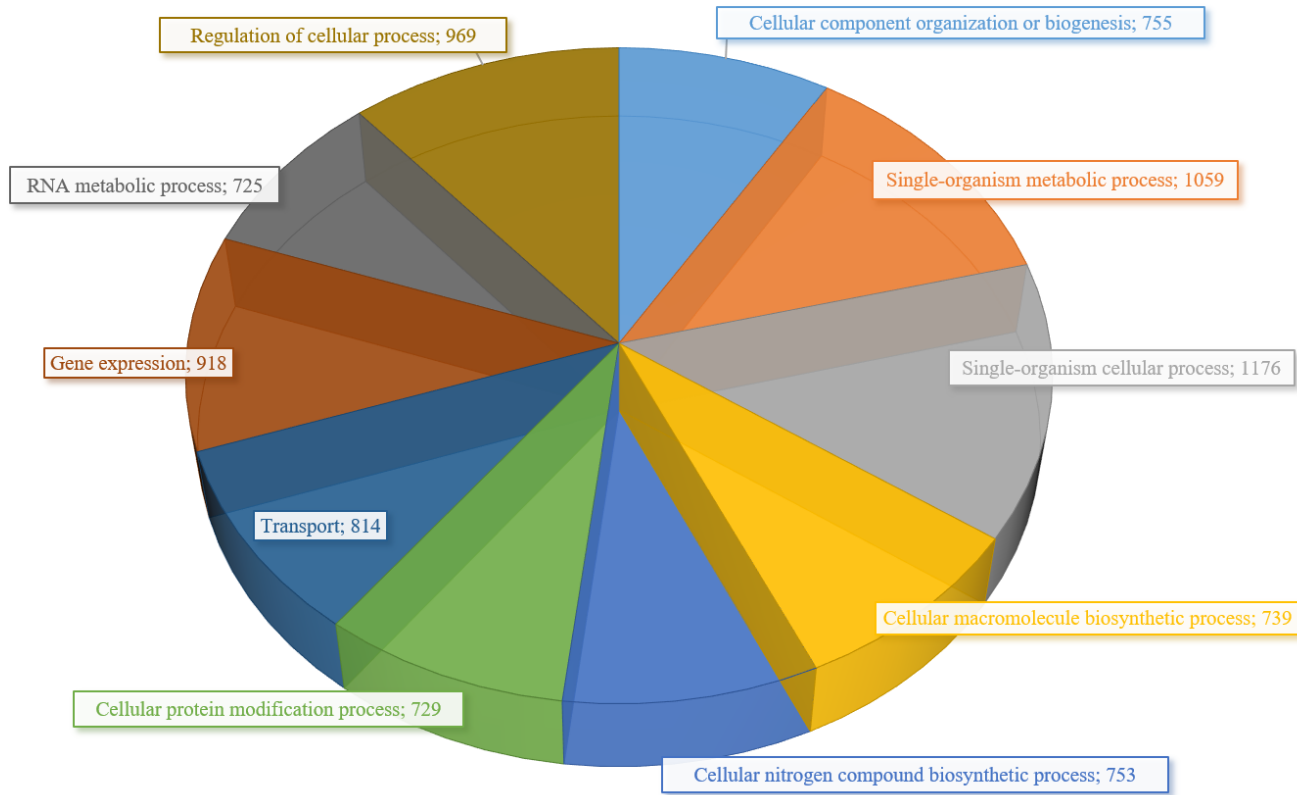
Sandra Antunes

santunes@ihmt.unl.pt

Supplementary figures S1 to S4.

A

BIOLOGICAL PROCESS



B

MOLECULAR FUNCTION

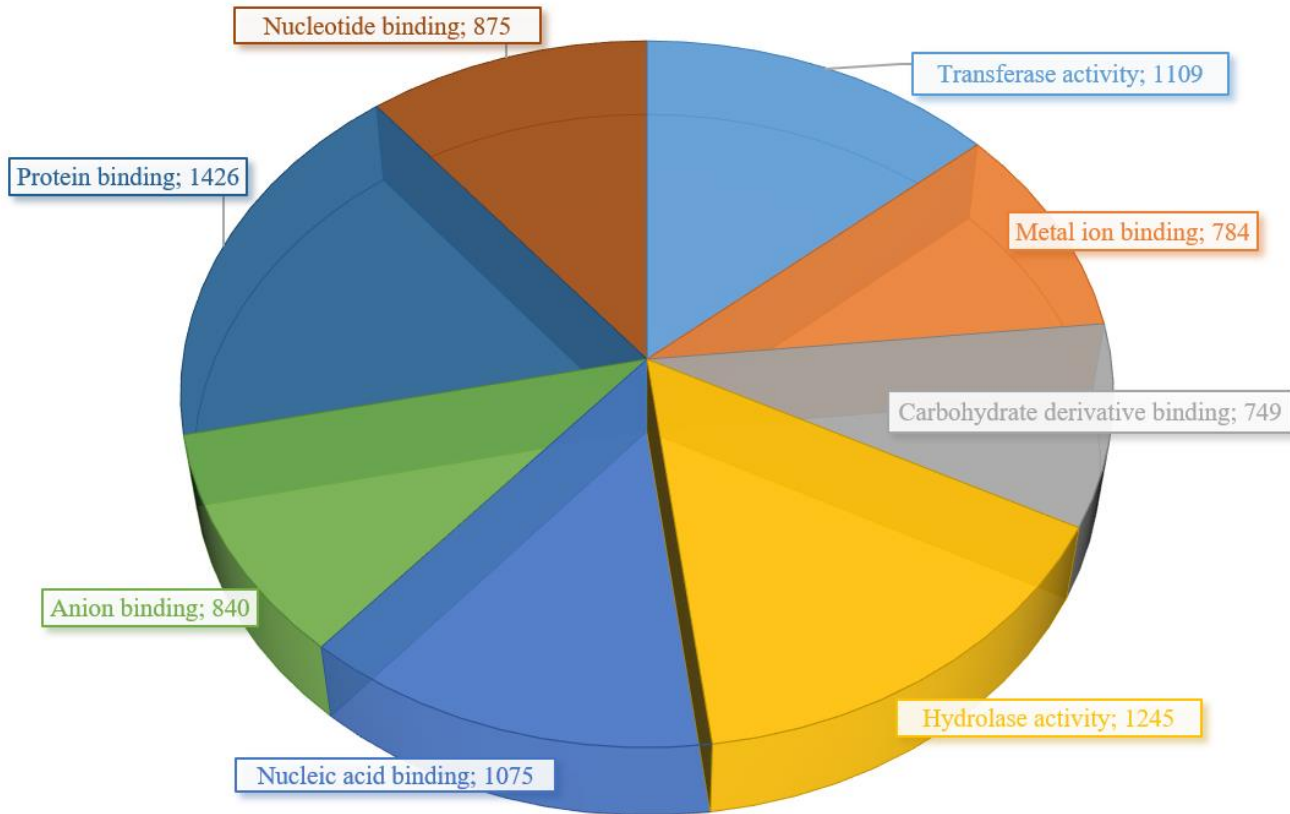
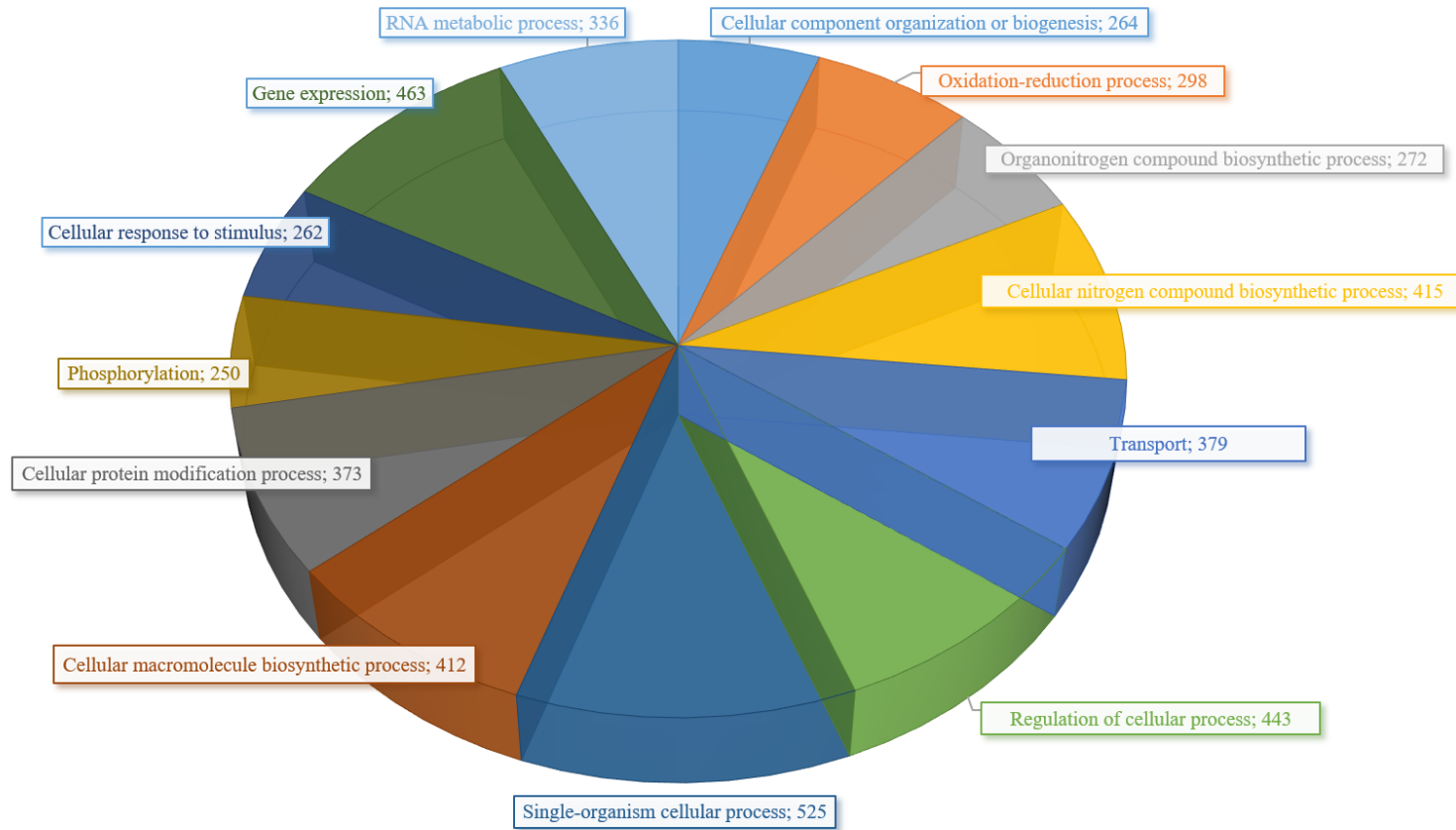


Figure S1: Multi-level chart of biological processes(A) and molecular functions (B) of the sialotranscriptome of *R. annulatus* female ticks based in Gene Ontology. For each slice a biological process or a molecular function is shown and its representation in number of transcripts.

A

BIOLOGICAL PROCESS



B

MOLECULAR FUNCTION

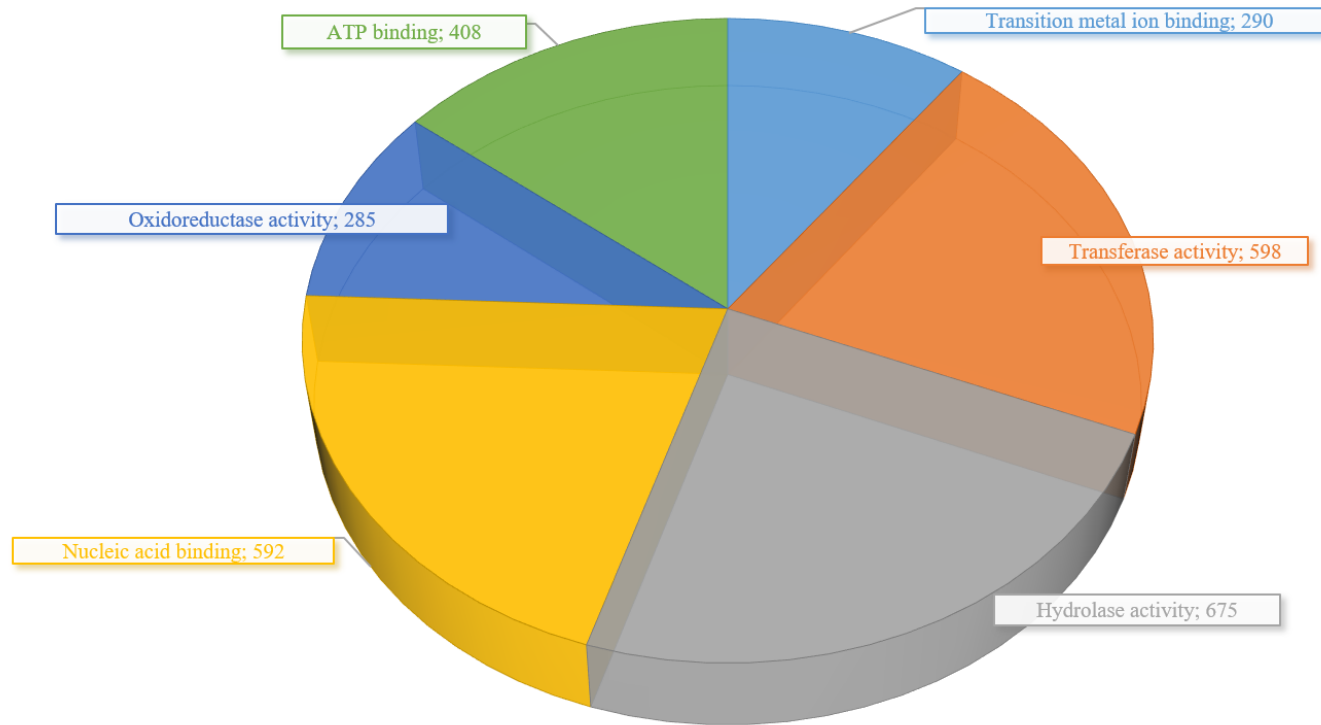


Figure S2: **Multi-level chart of biological processes(A) and molecular functions (B) of the proteome of *R. annulatus* female ticks based in Gene Ontology.** For each slice a biological process or a molecular function is shown and its representation in number of transcripts.

Differential gene expression in *Rhipicephalus annulatus* female ticks in response to *Babesia bigemina* infection

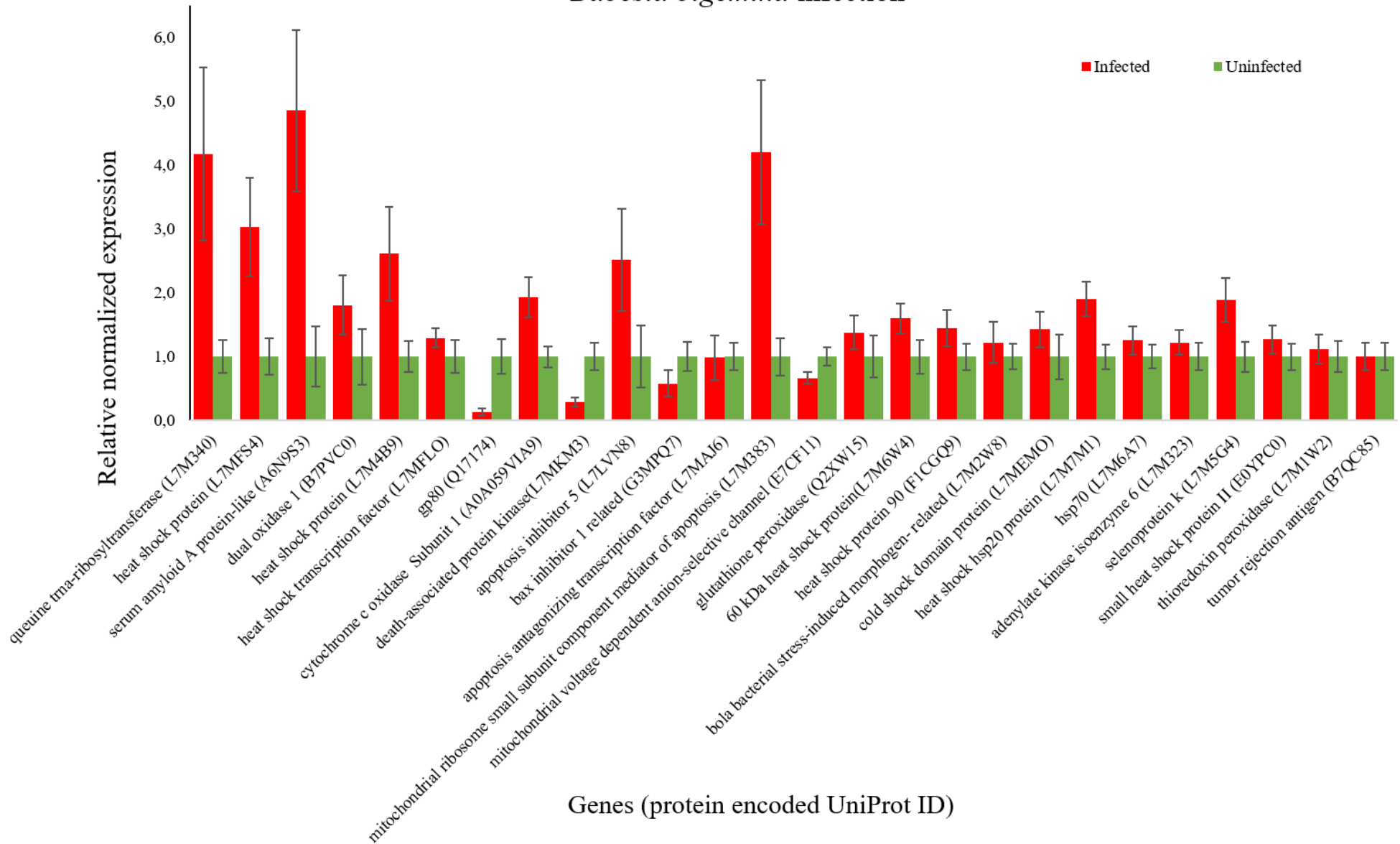


Figure S3: **Differentially gene expression of *R. annulatus* in response to *B. bigemina* infection evaluation by qPCR.** Red bars represent the *B. bigemina* infected SG and green bars represent the SG from uninfected *R. annulatus* female ticks. * P < 0.05

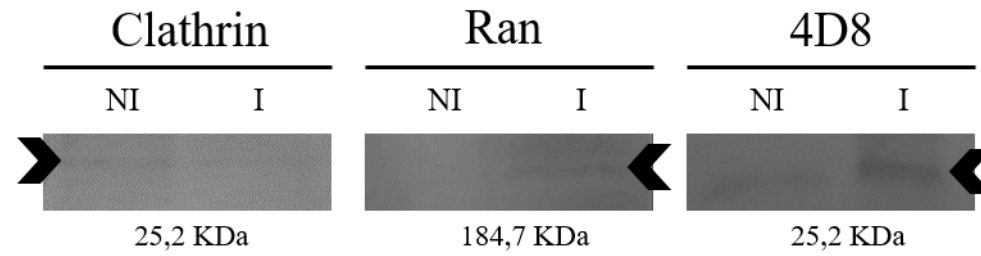


Figure S4: **Evaluation of differential representation of the proteins Clathrin, Ran and 4D8 in *R. annulatus* in response to *B. bigemina* infection by Western blot.** NI correspond to the uninfected sample; I correspond to the infected sample. The protein weight is referred below each panel.