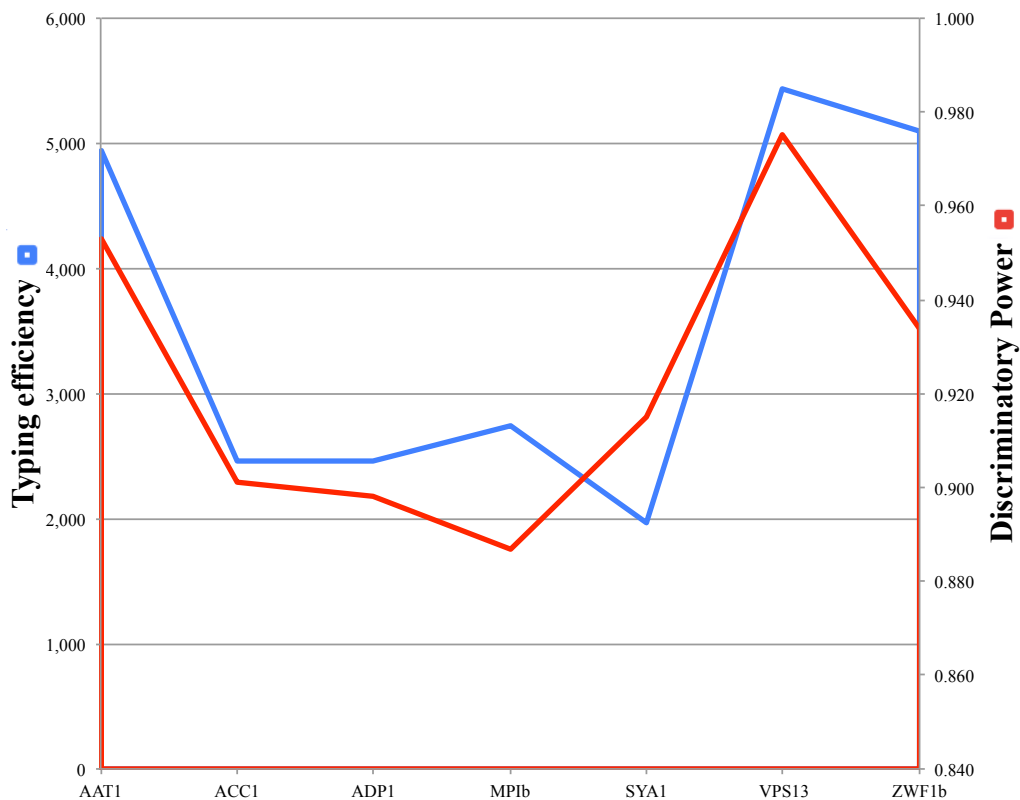


A.



B.

Number of loci (number of combinations)	Minimum number of STs found	Mean number of STs found	Maximum number of STs found
1 (7)	113	2,002,857	299
2 (21)	532	8,171,429	1145
3 (35)	1000	1506	1858
4 (35)	1000	2,083,314	2394
5 (21)	1000	2,591,572	2849
6 (7)	1000	3,058,572	3191
7 (1)	1000	3482	3482

C.

Number of loci	Maximum number of ST	Combinations analyzed	Housekeeping genes
2	1145	21	VPS13, ZWF1b
3	1858	35	AAT1a, VPS13, ZWF1b
4	2394	35	AAT1a, ACC1, VPS13, ZWF1b
5	2849	21	AAT1a, ACC1, SYA1, VPS13, ZWF1b
6	3191	7	AAT1a, ACC1, ADP1, SYA1, VPS13, ZWF1b
7	3482	1	AAT1a, ACC1, ADP1, MPIb, SYA1, VPS13, ZWF1b