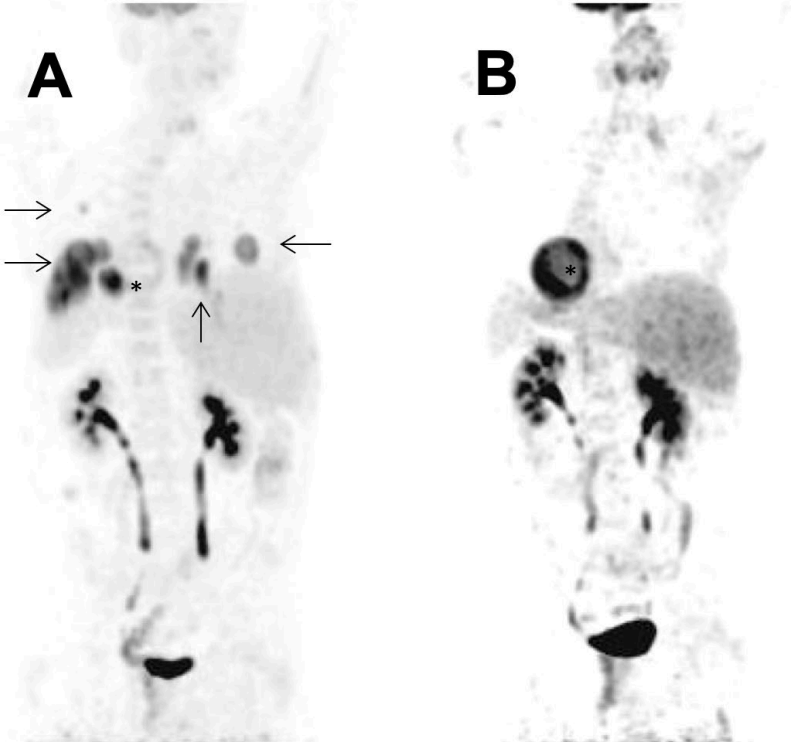
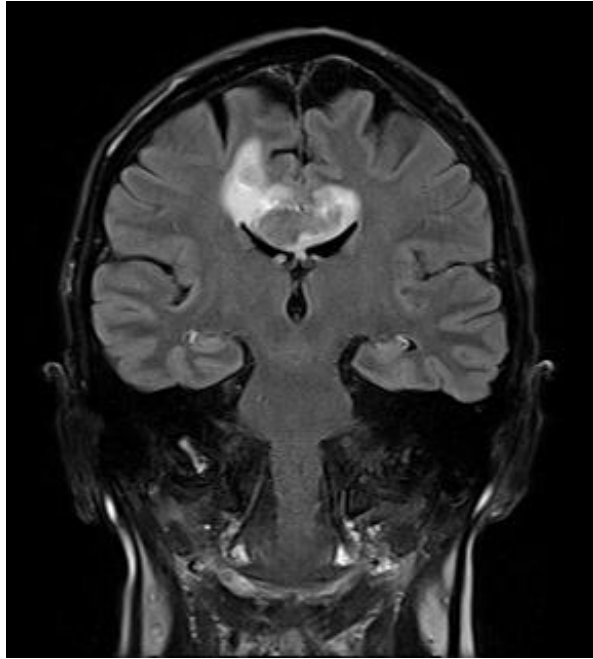


SUPPLEMENTARY FIGURES



Supplementary Figure 1

PET-CT during disease course. **A:** Multiple PTLD manifestations at day +228 post alloHSCT, **B:** Complete remission of PTLD one year after diagnosis; *: FDG-activity heart muscle.



Supplementary Figure 2

Cerebral MRI at day +300 post alloHSCT. Lymphoma typical lesion interpreted as PTLD manifestation (T1, gadolinium)

SUPPLEMENTARY TABLES

	HLA-A		HLA-B		HLA-C		HLA-DRB1		HLA-DQ	
Patient	01:01P	03:01P	08:01P	35:01P	07:01P	04:01P	01:01P	03:01P	05:01P	02:01P
T-cell Donor	01:01:01G	03:01:01G	08:01:01G	35:01:01G	07:01P	04:01:01G	15:01P	03:01P	06:02P	02:01P

Supplementary Table 1A

Matching of HLA-alleles in PTLD patient following alloHSCT and third-party donor of EBV-specific T-lymphocytes.

<i>time point of administration</i>	<i>EBNA1/Select-specific T-cell dosage</i>
November 2016	1.0 x 10 ⁴ CD3+ cells/kg *
December 2016	0.5 x 10 ⁴ CD3+ cells/kg +
January 2017	0.5 x 10 ⁴ CD3+ cells/kg +
March 2017	1.0 x 10 ⁴ CD3+ cells/kg *
May 2017	0.5 x 10 ⁴ CD3+ cells/kg +
July 2017	0.5 x 10 ⁴ CD3+ cells/kg +

* fresh, + cryopreserved

Supplementary Table 1B

Scheduling and dosing of EBV-specific T-cell administration. EBV-specific T-cells were selected twice from the same unrelated donor and were prepared based on interferon- γ release following stimulation with EBV EBNA1 and EBV Select peptide pools, as previously reported^{9,10}.