

Supplementary material

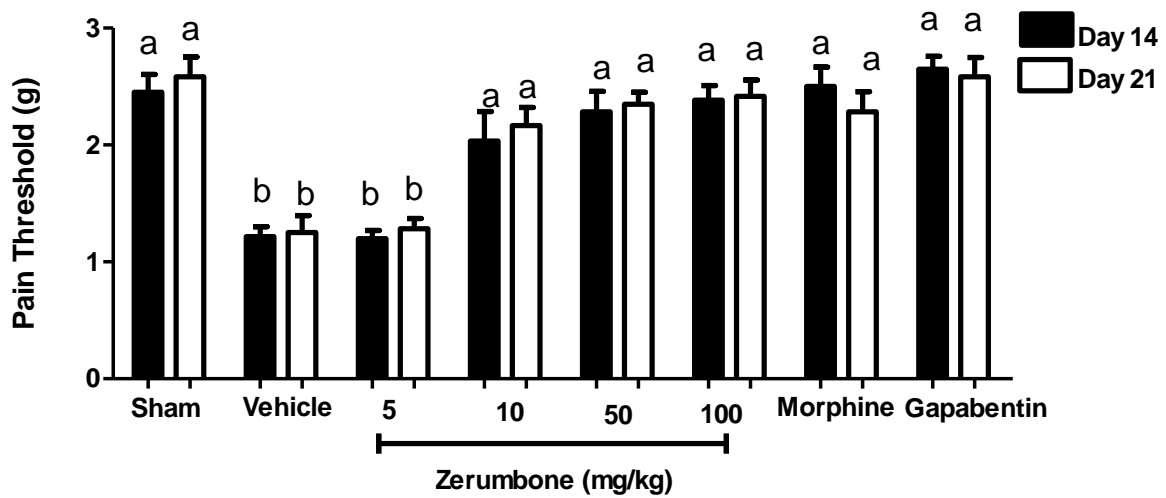


Fig. S1. Effects of Zerumbone on CCI-induced neuropathic pain in mice on day 14 and day 21 using the von Frey filament assessment for the ipsilateral paw. Each column represents the mean \pm SEM of six mice. Statistical analysis was determined by one-way ANOVA followed by Tukey's post-hoc test with values of different superscript letters (a,b) as statistically different from each other ($p < 0.05$).

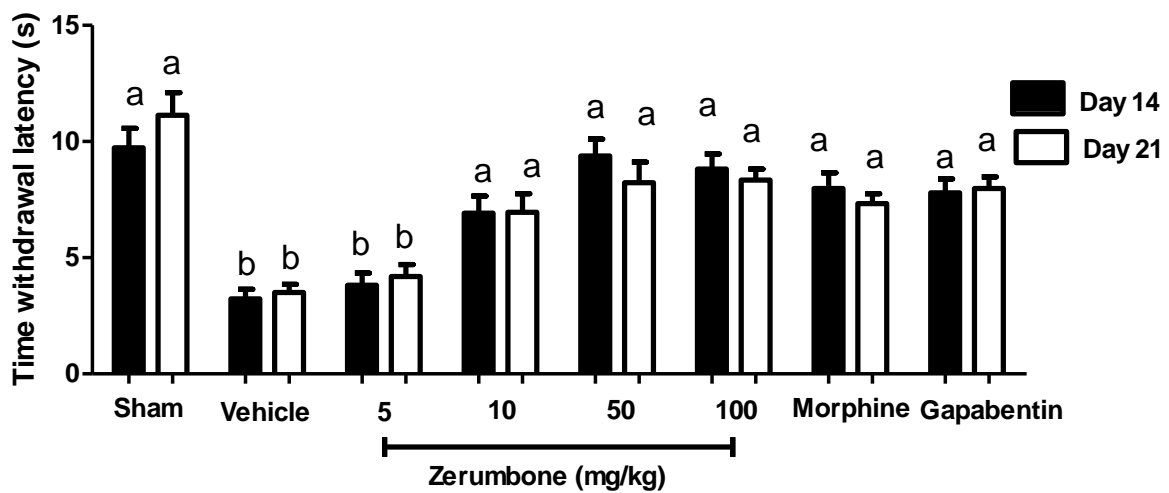


Fig. S2. Effects of Zerumbone on CCI-induced neuropathic pain in mice on day 14 and day 21 using the Hargreaves plantar test assessment for ipsilateral paw. Each column represents the mean \pm SEM of six mice. Statistical analysis was determined by one-way ANOVA followed by Tukey's post-hoc test with values of different superscript letters (a,b) as statistically different from each other ($p < 0.05$).

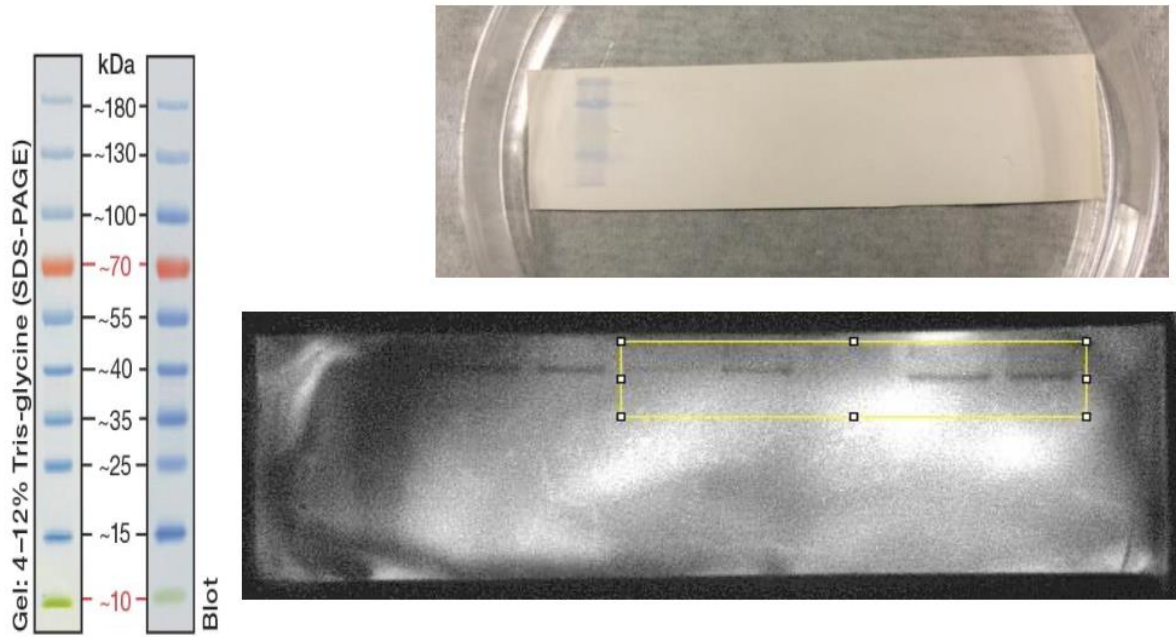


Fig. S3. Full image scan of α_{2A} -adrenergic receptor blot with ladder on the left lane. Band to correspond to ~48 kDa.

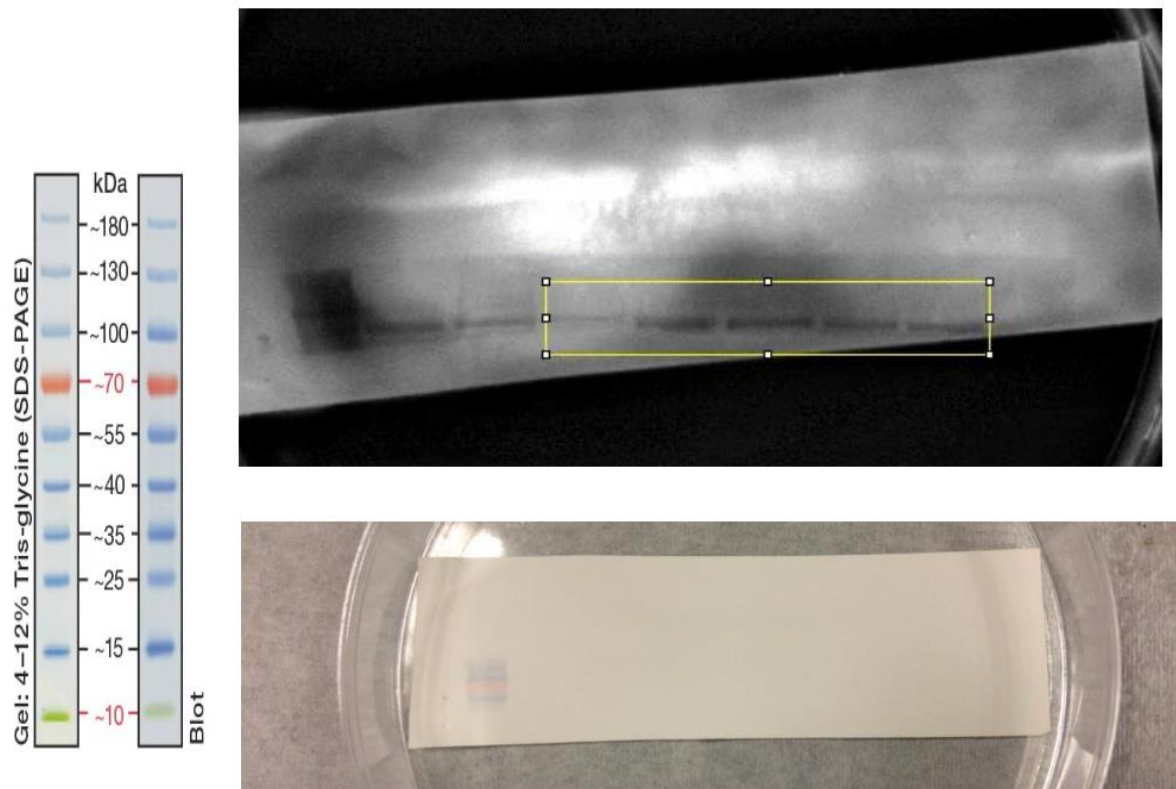


Fig. S4. Full image scan of TRPV1 receptor blot with ladder on the left lane. Band to correspond to ~92 kDa.

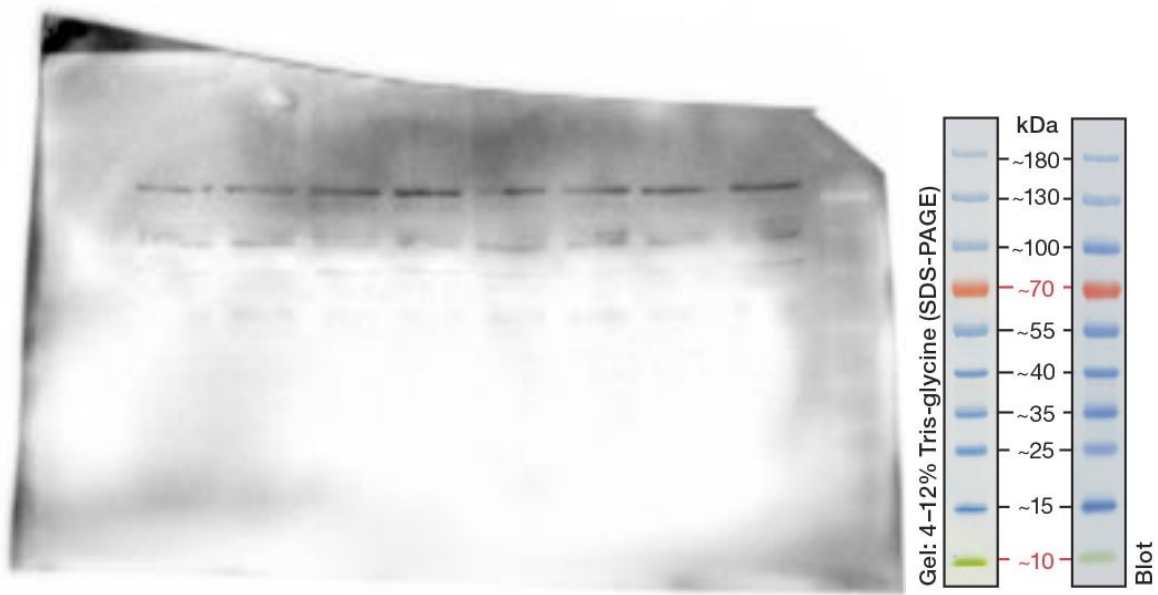


Fig. S5. Full image scan of NMDA NR2B receptor blot with ladder mildly visible on the right most lane. Band to correspond to ~160 kDa.



Fig. S6. Full image scan of β -actin blot.

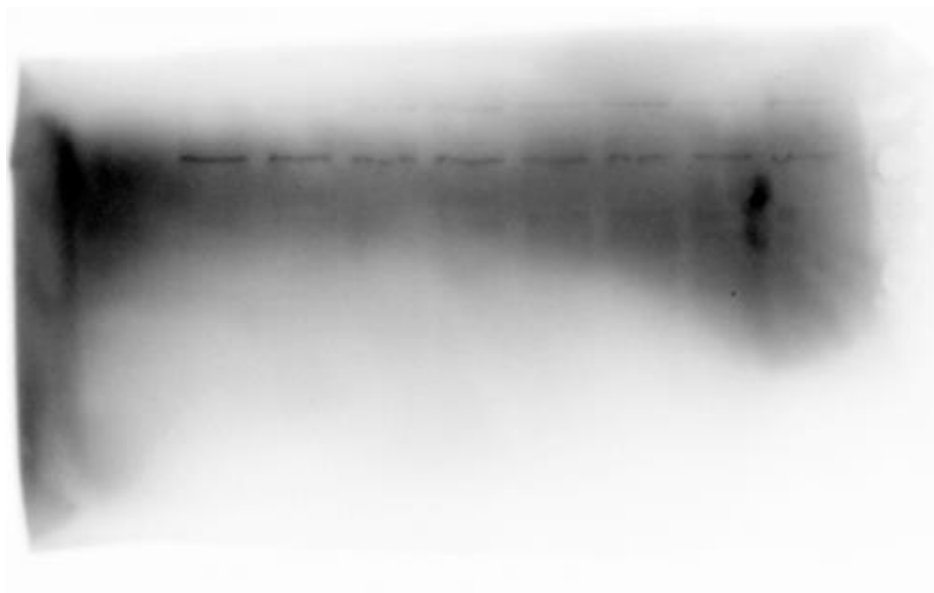


Fig. S7. Full image scan of α_{2A} -adrenergic receptor blot.

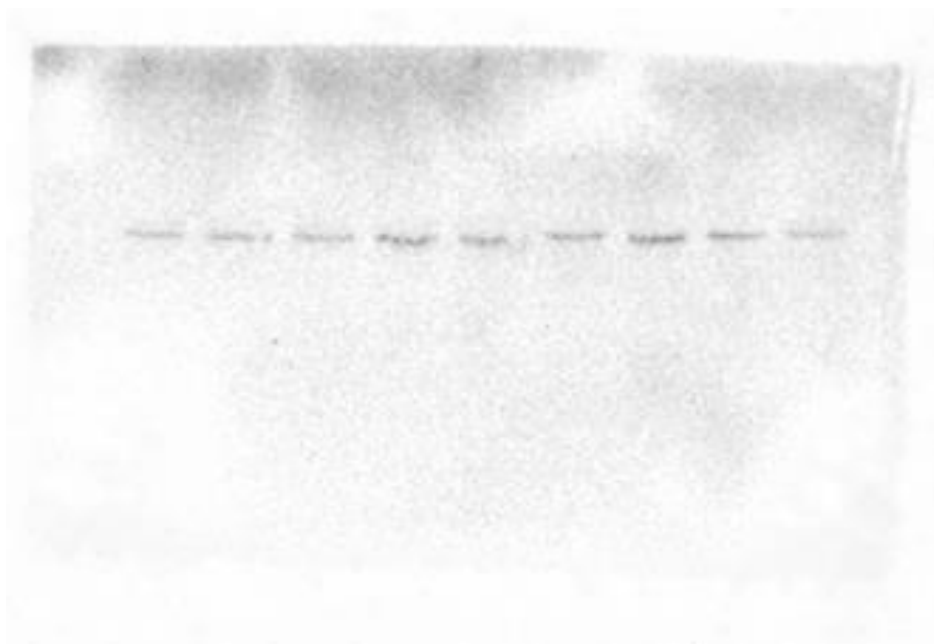


Fig. S8. Full image scan of TRPV1 receptor blot.

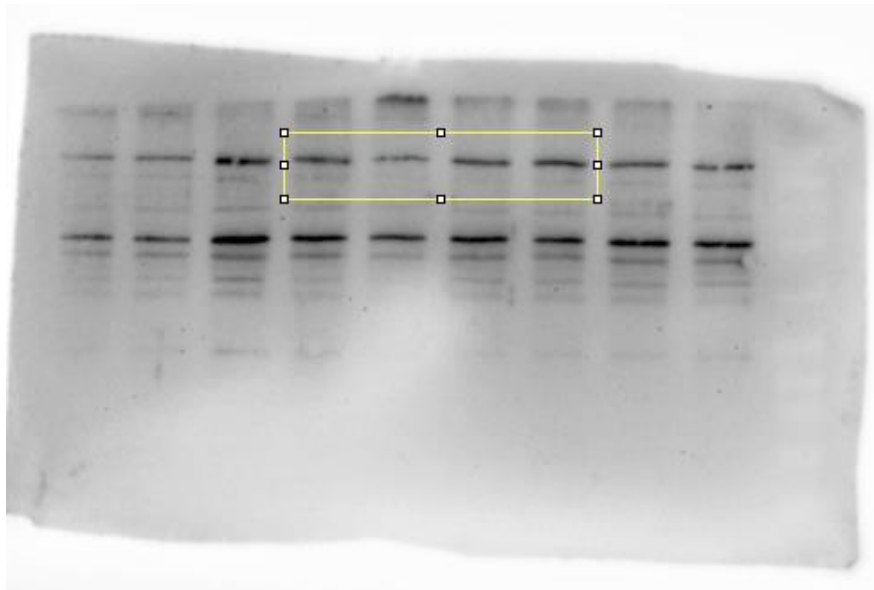


Fig. S9. Full image scan of NMDA NR2B receptor blot.