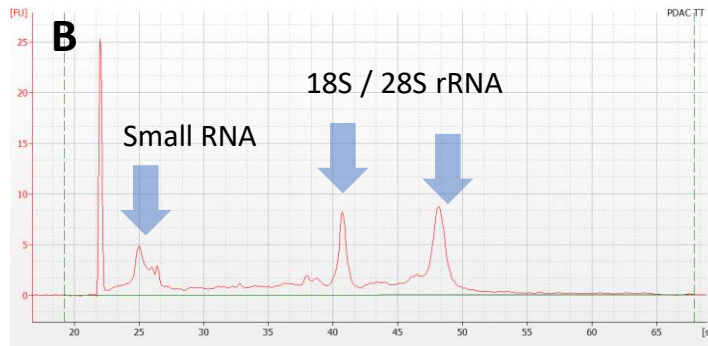
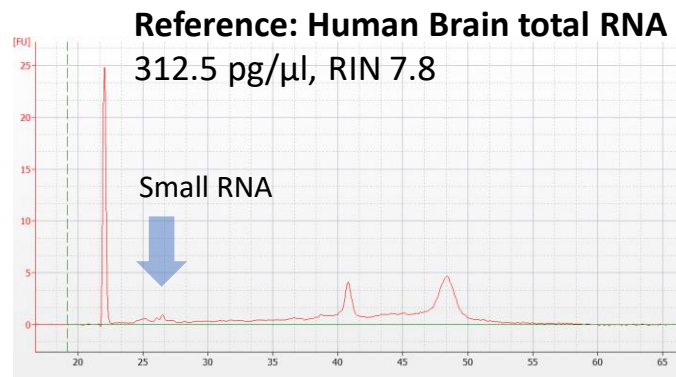
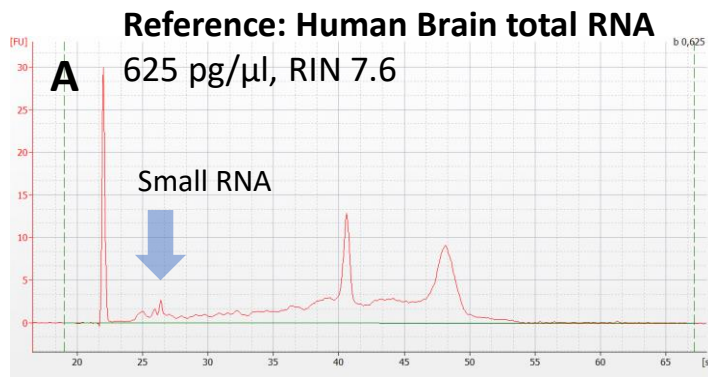


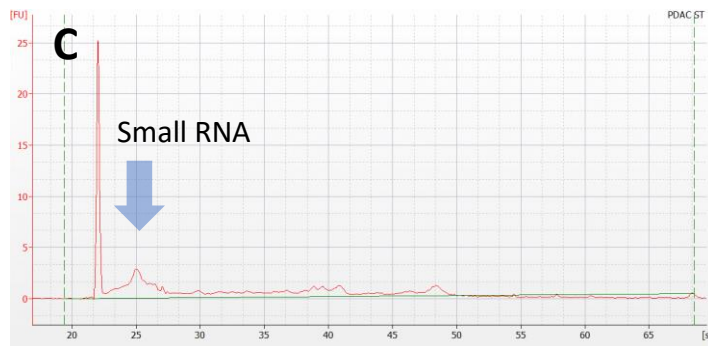
Supplementary Figure S1



PDAC Tumor compartment

Area: 271,100 μ m²

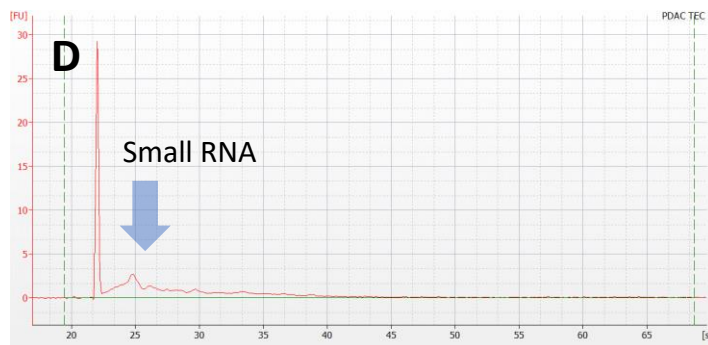
599 pg/ μ l, RIN 8.1



PDAC Stroma compartment

Area: 271,500 μ m²

256 pg/ μ l, RIN n/a



PDAC TEC (microvasculature)

Area: 277,350 μ m²

239 pg/ μ l, RIN n/a

Supplementary Figure S1: Bioanalyzer results obtained from PDAC compartments.

(A) human brain total RNA was obtained from Thermo Fisher and diluted to 625 pg/ μ l (left) and 312.5 pg/ μ l (right), which was the expected range for total RNA recovery from PDAC compartments. Small RNA and ribosomal RNA peaks are indicated. Total RNA recovery from tumor (B), stroma (C), and microvasculature (D). Recovery was highest from 271,100 μ m² tumor compartment compared to stroma and microvasculature. n/a, not assessable because of low rRNA concentration.