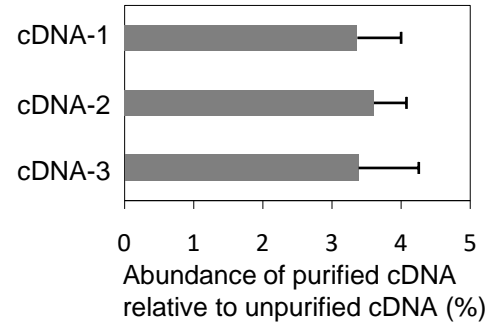


# Supplementary Figure 1

Strand specific detection of transcripts



## Supplementary Figure 1

Enrichment of biotinylated cDNA using streptavidin magnetic beads. Antisense RNA was generated by *in vitro* transcription of a plasmid clone having E $\beta$  region as the insert. 10ng of RNA was reverse transcribed using biotinylated m1397 as primer. The resultant cDNA was subjected to streptavidin magnetic beads based purification. Abundance of cDNA before and after purification were estimated by qPCR (m1397-m1398r). Relative levels of enriched biotinylated cDNA normalized to total cDNA before enrichment in three cDNA samples are shown. Error bars represent SEM (n=3). Primer locations as in Figure 4.