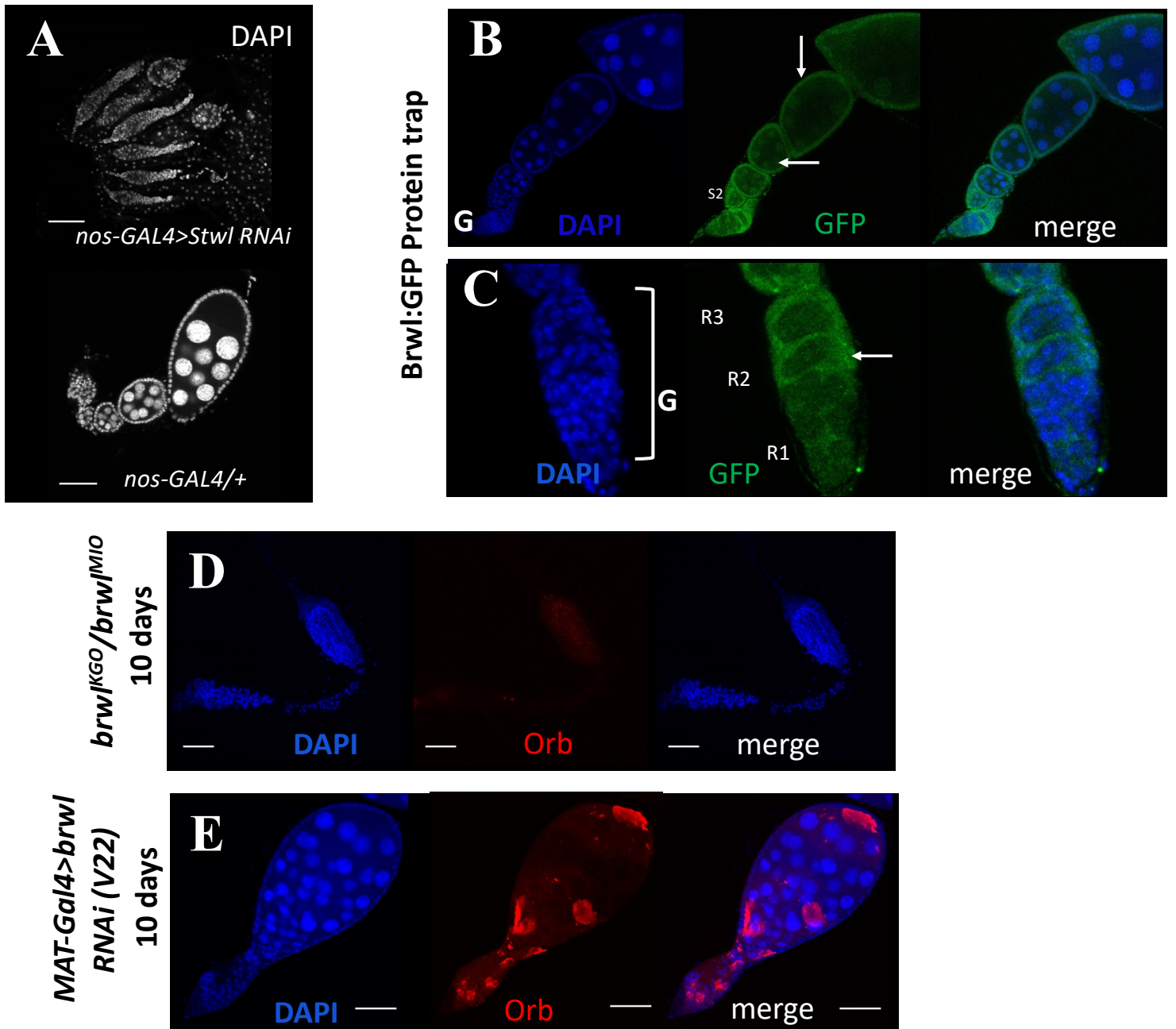
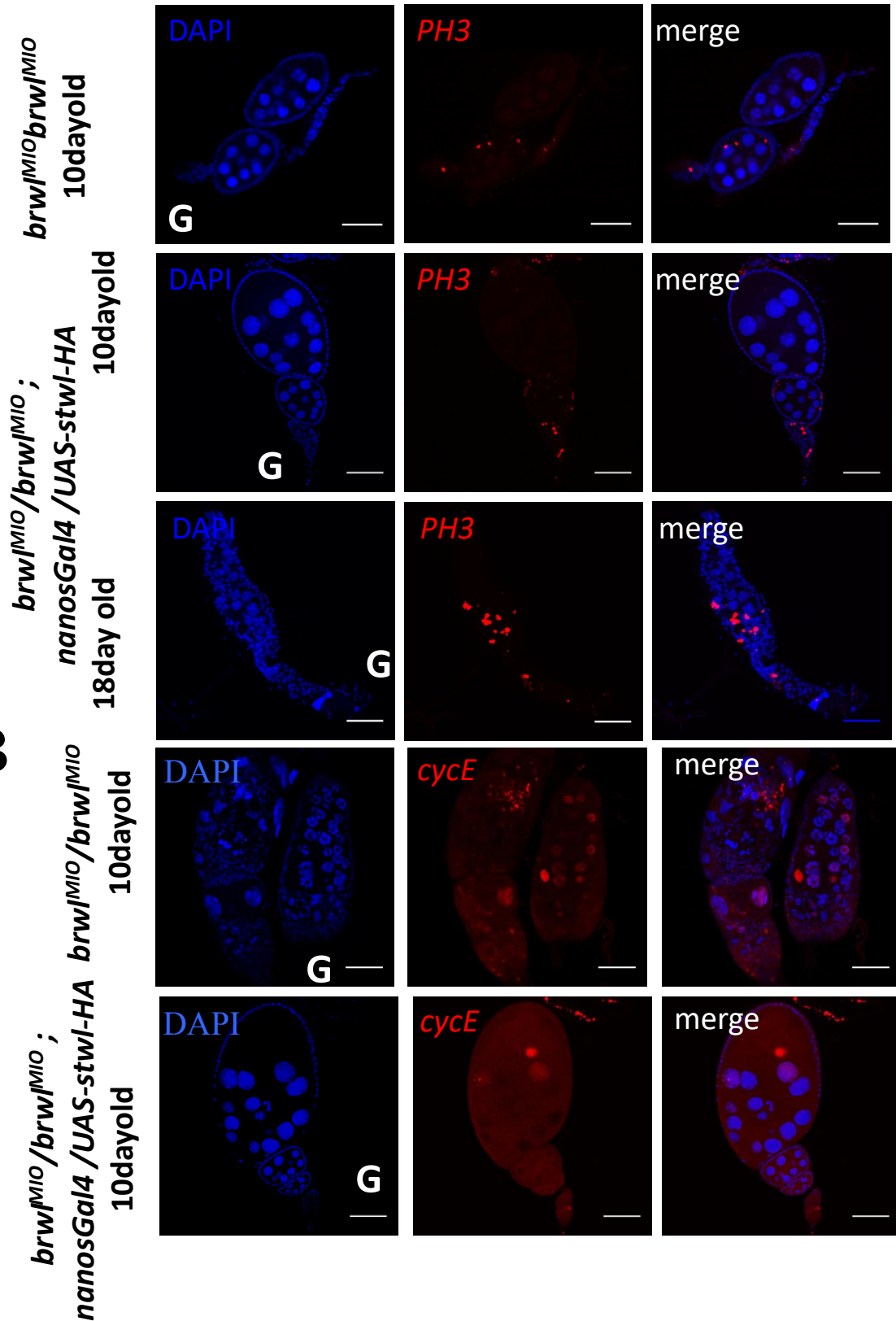


# Supplementary Figure 1



**Supplementary Figure 1.** (A) Knockdown of *Stwl* transcripts using a TRip/VALIUM20 RNAi lines in the *nos* expression domain leads to ovarian phenotypes. The effects are strong with very small ovarioles seen day 2 onwards that are prone to degeneration. (B-C) Expression of Brwl:GFP protein trap line is monitored by anti-GFP staining. Expression is strong in the nurse cell and follicle cell nuclei (B, arrows). In the germarium (G, Panel C), Brwl:GFP expression is absent in region 1 (C). Staining appears in region 2 and 3 and then appears to be localized primarily in the cytoplasm (arrows) in Region 2-3. Expression is seen in the nucleus, Stage 2 (S2) onwards. (D) Absence of Orb staining in a significant fraction of ovarioles, 10 days PE in *brwl<sup>KGO</sup>/brwl<sup>MIO</sup>* females. (E) Orb staining is disorganized. This is a result of lack of well specified egg chambers and oocyte specification.

**B**

**Supplementary Figure 2. Ovarian defects due to loss of *brwl* are ameliorated by over-expression of *stwl*.** (A) Expression of *Stwl* in a *brwl<sup>KGO</sup> / brwl<sup>MIO</sup>* mutant background results in a near normal number and pattern of mitotically active cells, as stained by a phospho-histone3 S10 (PH3) antibody (red) and counterstained by DAPI (blue), in 10 day old ovaries. N=3-5, n=15-20.

(B) Expression of *Stwl* in a *brwl<sup>KGO</sup> / brwl<sup>MIO</sup>* mutant background show near normal patterns of mitotic cells as stained by the Cyclin E antibody (red) in 10 day old ovaries. N=3-5, n=10-15. Compare mutant and rescue data with Wild-Type data in Figure 5.